

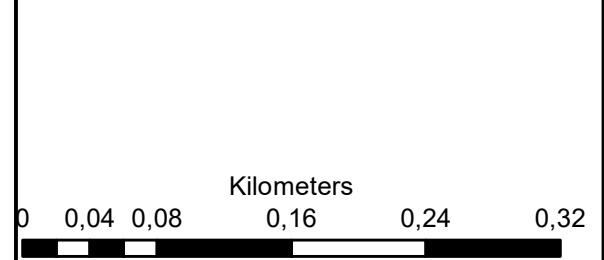
**Telluric Farm  
Remainder 7, 43 & Portion 104  
of 444 Ganse Valle  
Plettenberg Bay**

**Legend**

- Telluric Farm
- Perennial River
- NATIONAL ROUTE
- OTHER ACCESS

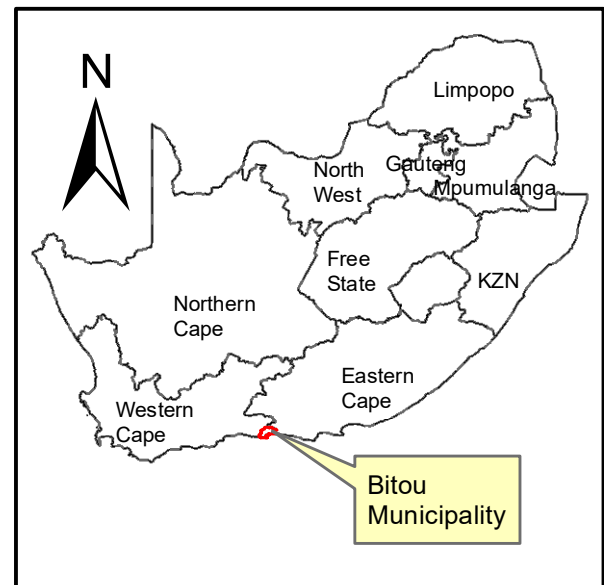
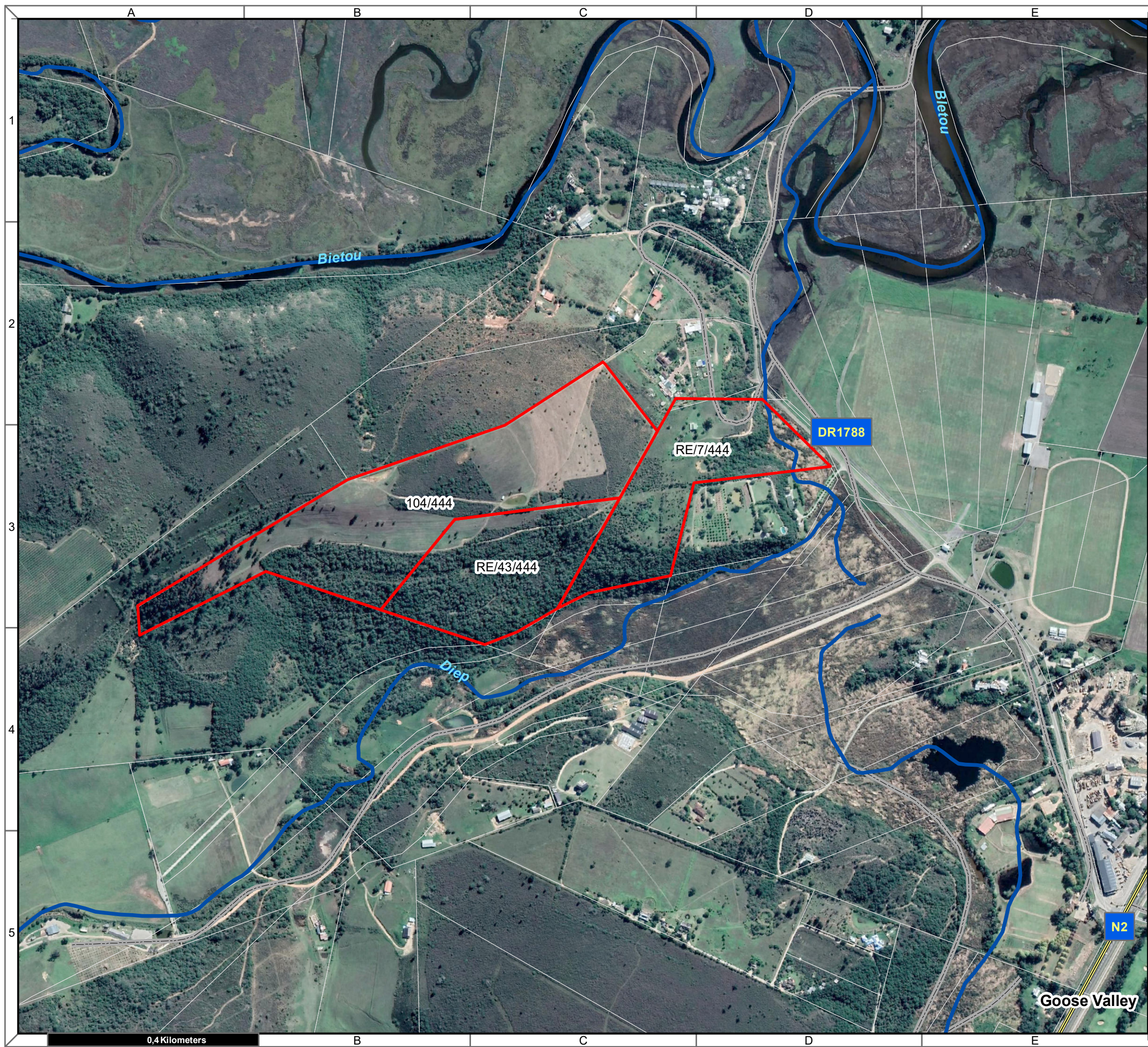
**Notes**

- Map Scale is 1: 7 000 when printed on A3
- Aerial image courtesy of Google Earth Pro 2021
- Imagery date April 2021



Map Drawn By:	Date	Reference
Melissa Mackay	2021/10/20	BIT704

**Cape Environmental Assessment Practitioners (Pty) Ltd**  
 Reg. No. 2008/004627/07  
 Telephone: +27 44 874 0365  
 Facsimile: +27 44 874 0432  
 Web: www.cape-eaprac.co.za  
 17 Progress St  
 PO Box 2070  
 George 6530



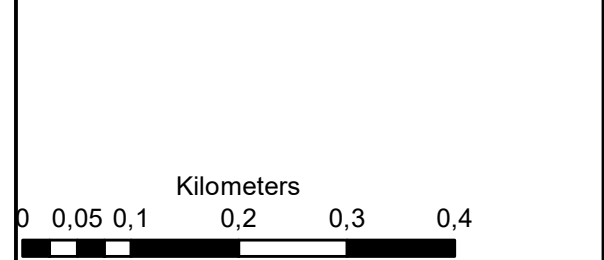
**Telluric Farm  
Remainder 7, 43 & Portion 104  
of 444 Ganse Valle  
Plettenberg Bay**

**Legend**

- Telluric Farm
- Perennial River
- NATIONAL ROUTE
- OTHER ACCESS

**Notes**

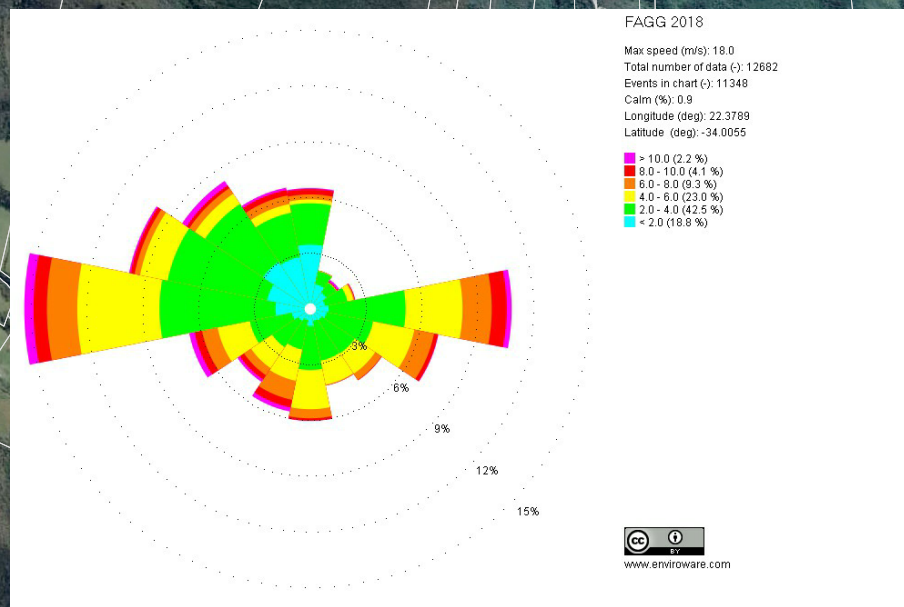
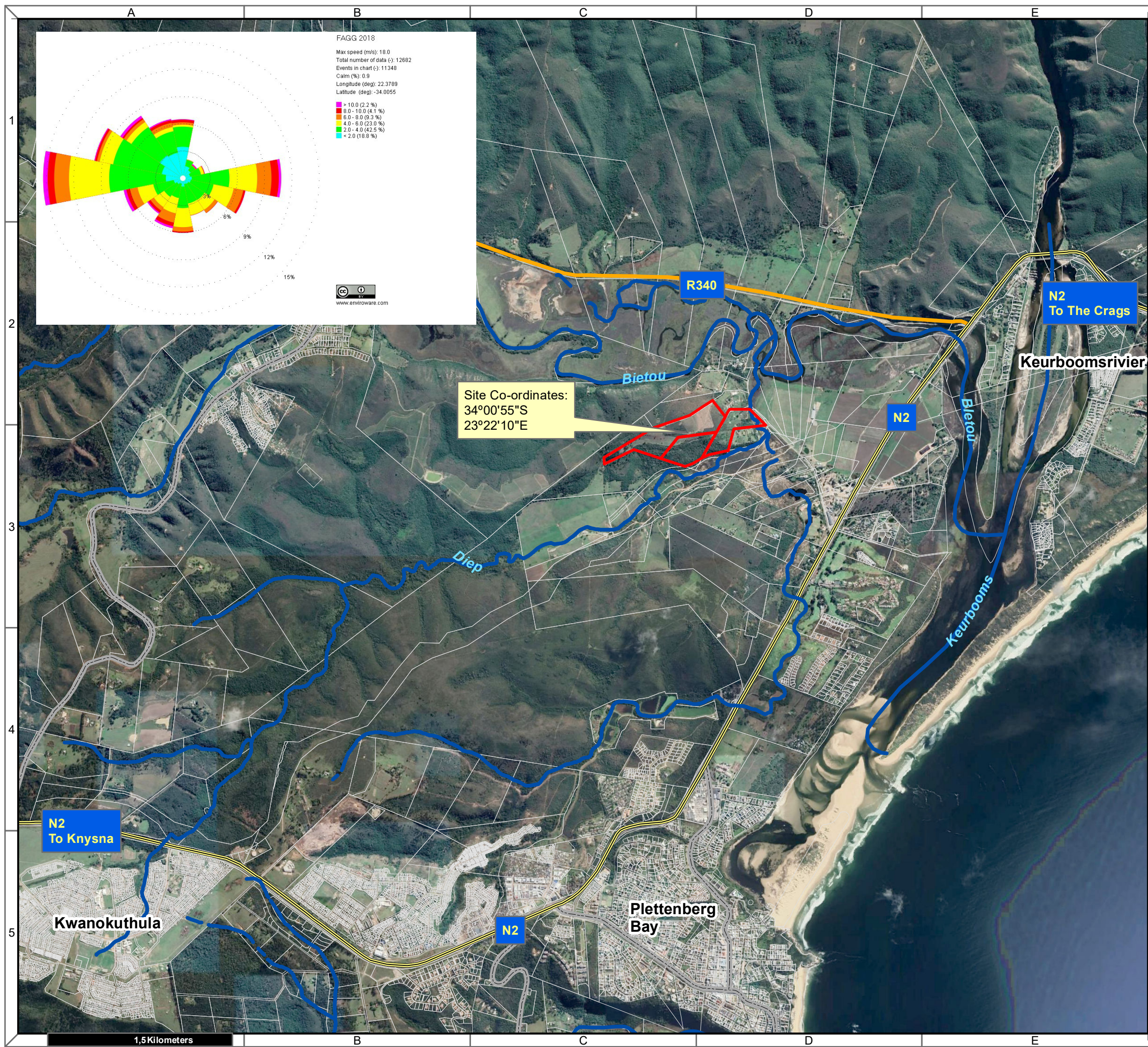
- Map Scale is 1: 7 000 when printed on A3
- Aerial image courtesy of Google Earth Pro 2021
- Imagery date April 2021



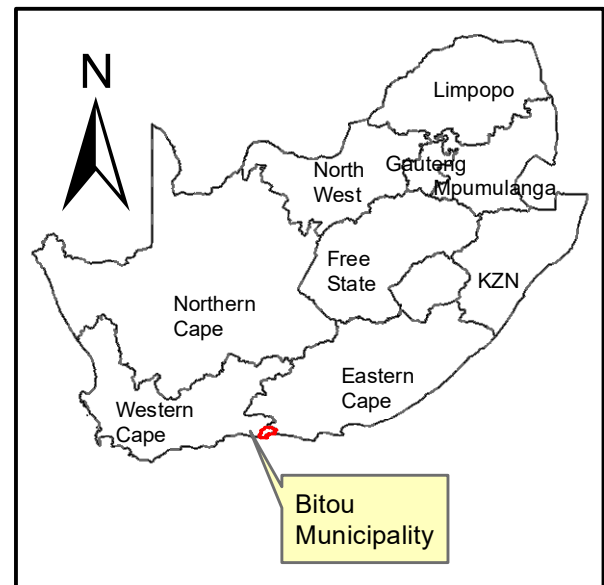
Map Drawn By:	Date	Reference
Melissa Mackay	2021/10/20	BIT704

**Cape Environmental Assessment Practitioners (Pty) Ltd**  
 Telephone: +27 44 874 0365  
 Facsimile: +27 44 874 0432  
 Web: www.cape-eaprac.co.za

17 Progress St  
 PO Box 2070  
 George 6530



Site Co-ordinates:  
 34°00'55"S  
 23°22'10"E



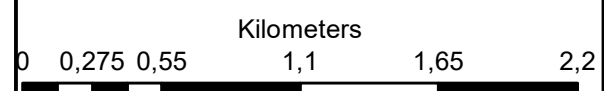
**Telluric Farm  
 Remainder 7, 43 & Portion 104  
 of 444 Ganse Valle  
 Plettenberg Bay**

**Legend**

- Telluric Farm
- Perennial River
- NATIONAL ROUTE
- MAIN ROAD
- SECONDARY ROAD

**Notes**

- Map Scale is 1: 30 000 when printed on A3
- Aerial image courtesy of Google Earth Pro 2021
- Imagery date April 2021
- Wind data courtesy of Metar 2018
- Nearest Metar station is George Airport (FAGG) approx. 91kms on heading 270.30 degrees (west)



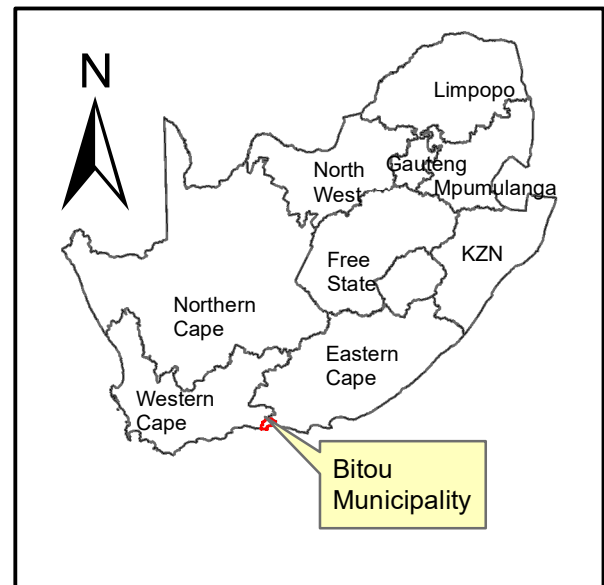
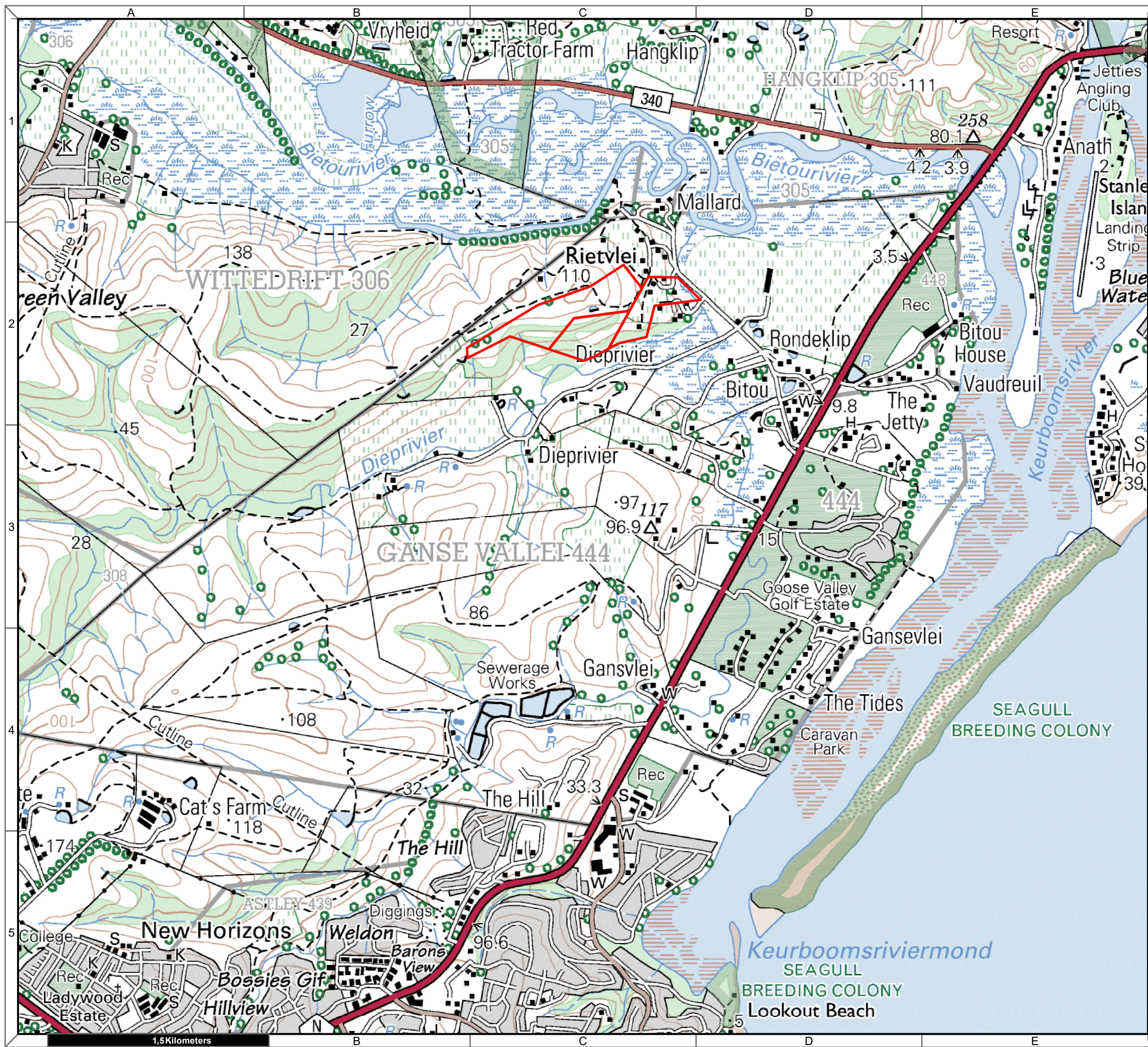
Map Drawn By:	Date	Reference
Melissa Mackay	2021/10/20	BIT704

**Cape Environmental Assessment Practitioners (Pty) Ltd**  
 Reg. No. 2008/004627/07

Telephone: +27 44 874 0365  
 Facsimile: +27 44 874 0432  
 Web: www.cape-eaprac.co.za

17 Progress St  
 PO Box 2070  
 George 6530

**LOCATION PLANS**



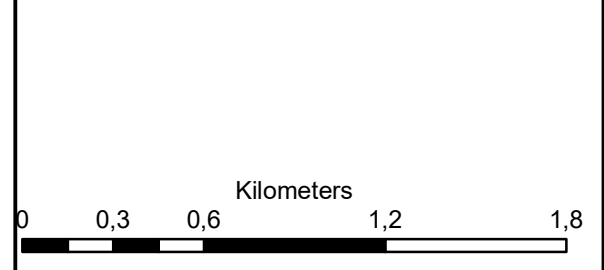
**Telluric Farm**  
 Remainder 7, 43 & Portion 104  
 of 444 Ganse Valle  
 Plettenberg Bay

**Legend**

Telluric Farm

**Notes**

- Map Scale is 1: 25 000 when printed on A3
- Topographical data courtesy of Surveyor General
- Imagery date 2006



Map Drawn By:	Date	Reference
Melissa Mackay	2021/10/20	BIT704

**Cape Environmental Assessment Practitioners (Pty) Ltd**  
 Telephone: +27 44 874 0365  
 Facsimile: +27 44 874 0432  
 Web: www.cape-eaprac.co.za

17 Progress St  
 PO Box 2070  
 George 6530

**1:50 000 TOPOGRAPHICAL PLANS**