

Critical Biodiversity Areas (CBA)

CBA 1

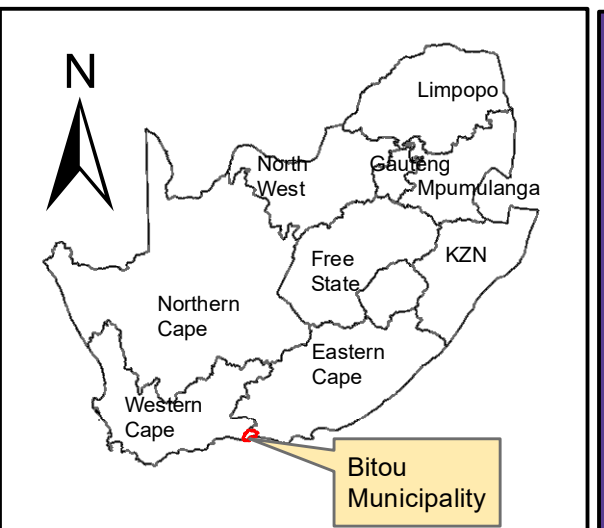
- CBA: Aquatic
- CBA: Terrestrial

CBA 2

- CBA2: Aquatic
- CBA2: Terrestrial

ESA 1

- ESA: Aquatic
- ESA: Terrestrial
- BSP_PA_Bitou



Telluric Farm
 Remainder 7, 43 & Portion 104
 of 444 Ganse Valle
 Plettenberg Bay

Legend

- Telluric Farm
- Perennial River
- OTHER ACCESS

Notes

- Map Scale is 1: 6 000 when printed on A3
- Aerial image courtesy of Google Earth Pro 2022
- Imagery date April 2021
- Biodiversity data courtesy of SANBI BGIS 2020 & WCBSP 2017

Kilometers
 0 0,075 0,15 0,3

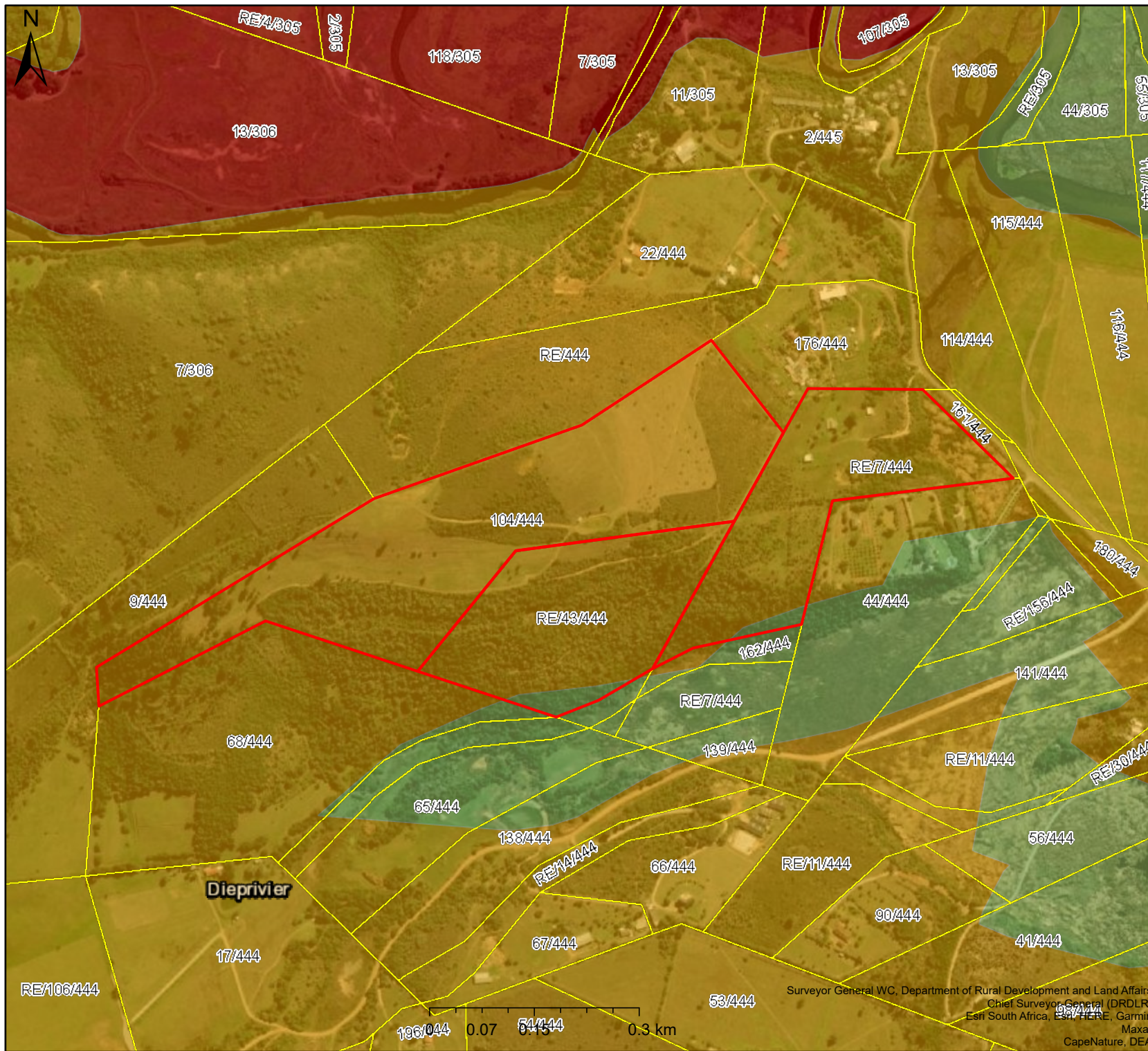
| Map Drawn By: | Date | Reference |
|----------------|------------|-----------|
| Melissa Mackay | 2022/08/30 | BIT704 |

Cape Environmental Assessment Practitioners (Pty) Ltd
 Reg. No. 2008/004627/07

Telephone: +27 44 874 0365
 Facsimile: +27 44 874 0432
 Web: www.cape-eaprac.co.za

17 Progress St
 PO Box 2070
 George 6530

CRITICAL BIODIVERSITY AREAS



Ecological Threat Status Map

Legend

 Farm Portions

Ecosystem Threat Status 2016

Status

-  CR
-  EN
-  LT

Map Center: Lon: 23°22'7.6"E
Lat: 34°0'55.6"S

Scale: 1:9 028

Date created: August 29, 2022

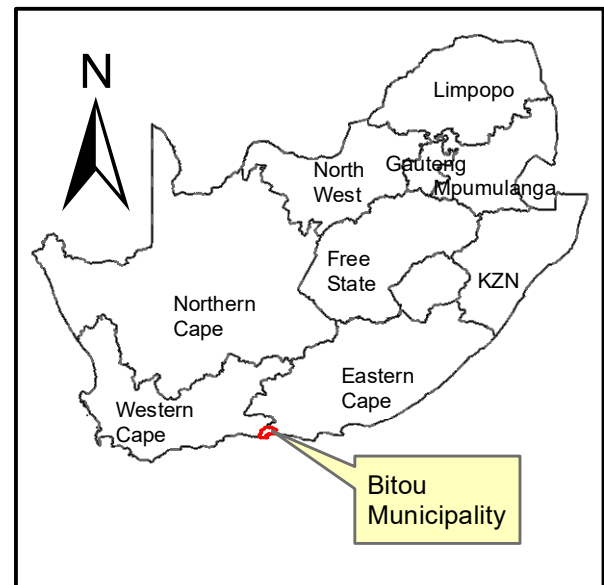
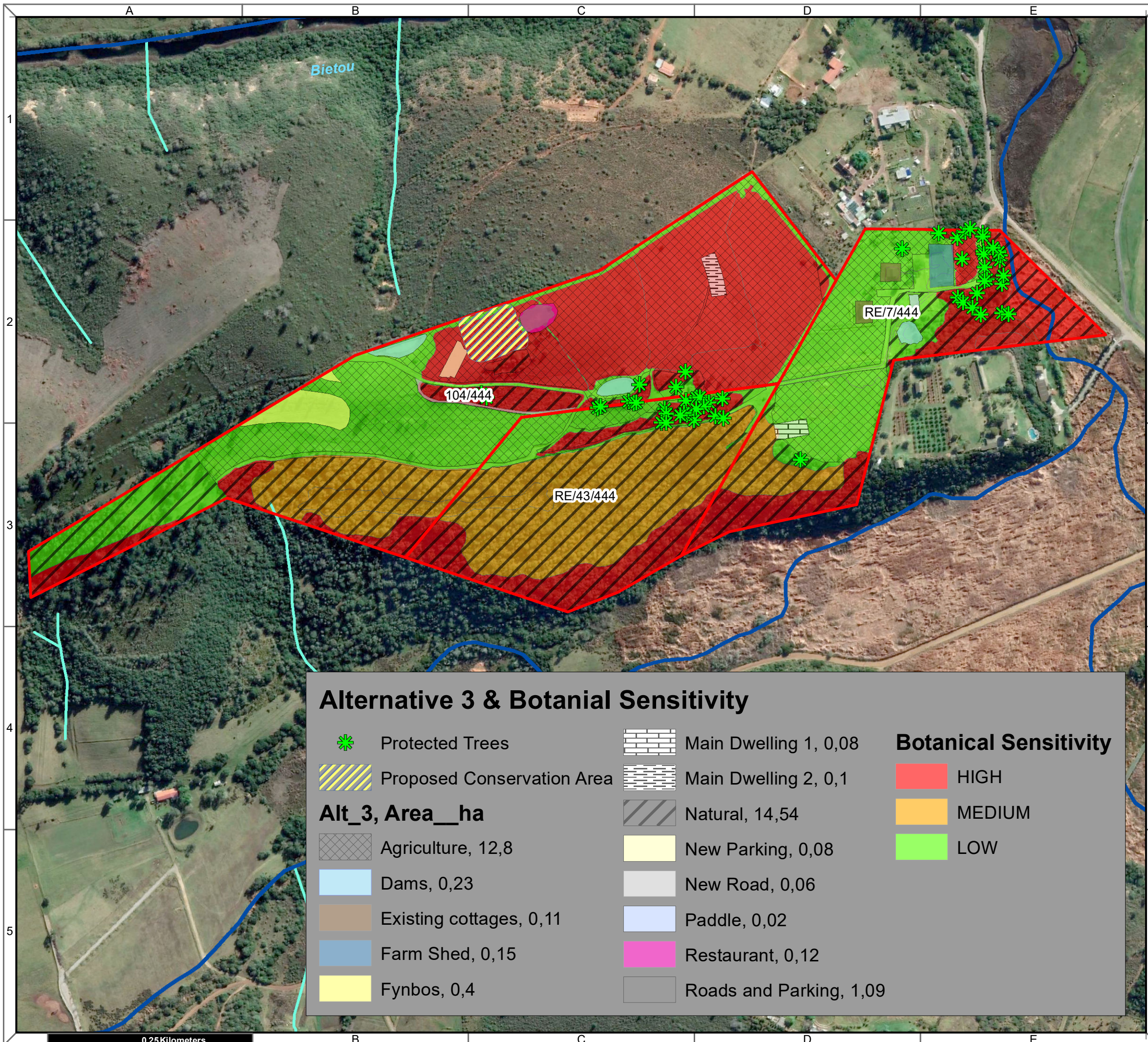
Surveyor General WC, Department of Rural Development and Land Affairs
Chief Surveyor General (DRDLR)
Esri South Africa, Esri HERE, Garmin
Maxar
CapeNature, DEA



**Western Cape
Government**

FOR YOU

Agriculture



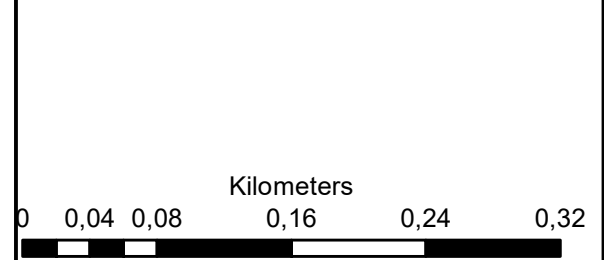
**Telluric Farm
Remainder 7, 43 & Portion 104
of 444 Ganse Valle
Plettenberg Bay**

Legend

- Telluric Farm
- Perennial River
- Non-Perennial River

Notes

- Map Scale is 1: 4 500 when printed on A3
- Aerial image courtesy of Google Earth Pro 2022
- Imagery date July 2022



| Map Drawn By: | Date | Reference |
|----------------|------------|-----------|
| Melissa Mackay | 2022/09/01 | BIT704 |

Cape Environmental Assessment Practitioners (Pty) Ltd
 Telephone: +27 44 874 0365
 Facsimile: +27 44 874 0432
 Web: www.cape-eaprac.co.za
 17 Progress St
 PO Box 2070
 George 6530

Alternative 3 & Botanical Sensitivity

| | | |
|----------------------------|-------------------------|------------------------------|
| Protected Trees | Main Dwelling 1, 0,08 | Botanical Sensitivity |
| Proposed Conservation Area | Main Dwelling 2, 0,1 | |
| Alt_3, Area__ha | Natural, 14,54 | HIGH |
| Agriculture, 12,8 | New Parking, 0,08 | MEDIUM |
| Dams, 0,23 | New Road, 0,06 | LOW |
| Existing cottages, 0,11 | Paddle, 0,02 | |
| Farm Shed, 0,15 | Restaurant, 0,12 | |
| Fynbos, 0,4 | Roads and Parking, 1,09 | |

ALTERNATIVE 3 & BOTANICAL SENSITIVITY

0,25 Kilometers