

Critical Biodiversity Areas



Legend

BSP CBA: Degraded

CBA2: Terrestrial

BSP CBA

CBA: Terrestrial

CBA: Estuary

Map Center: Lon: 23°22'31.6"E
Lat: 34°2'24.2"S

Scale: 1:4,514

Date created: 2024/05/08

© OpenStreetMap (and) contributors, CC-BY-SA
CapeNature



Ecological Support Areas



Legend

BSP ESA: Restore

ESA2: Restore from other land use

BSP ESA

ESA: Terrestrial

Map Center: Lon: 23°22'31.6"E
Lat: 34°2'24.2"S

Scale: 1:4,514

Date created: 2024/05/08

© OpenStreetMap (and) contributors, CC-BY-SA, Imagery © Mapbox


SANBI Remnants




Legend

Red List of Ecosystems Remnants

Category

 Endangered

 Least Concern

Map Center: Lon: 23°22'31.6"E
Lat: 34°2'24.2"S

Scale: 1:4,514

Date created: 2024/05/08

© OpenStreetMap (and) contributors, CC-BY-SA
South African National Biodiversity Institute



**Western Cape
Government**
FOR YOU

Ecosystem Threat Status



Legend

Ecosystem Threat Status 2016

Status

EN

LT

Map Center: Lon: 23°22'31.6"E
Lat: 34°2'24.2"S

Scale: 1:4,514

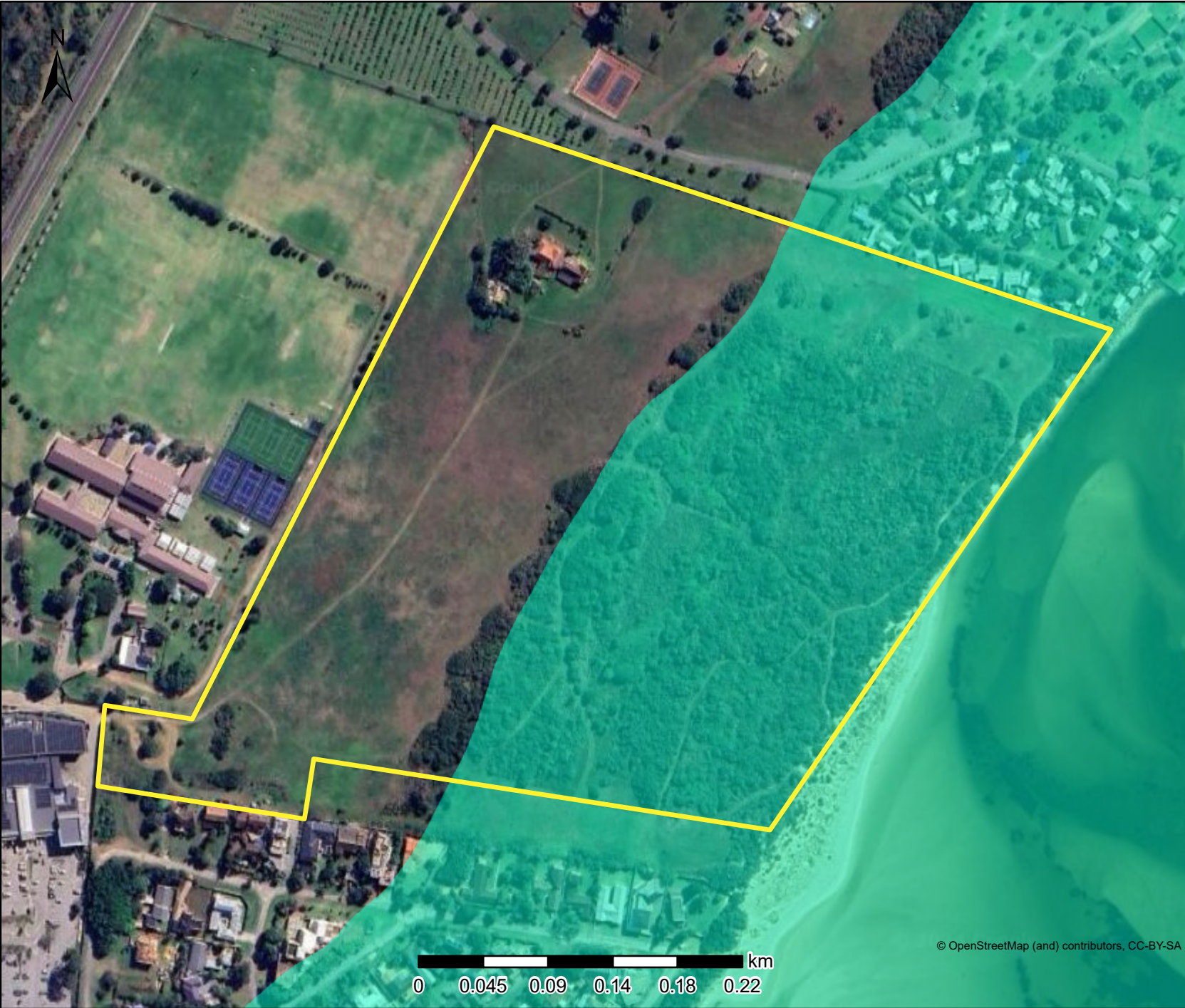
Date created: 2024/05/08

© OpenStreetMap (and) contributors, CC-BY-SA
CapeNature



**Western Cape
Government**
FOR YOU


Wetland



Legend

Wetlands (NWM5)

Classification

 Estuarine functional zone

Map Center: Lon: 23°22'31.6"E
Lat: 34°2'24.2"S

Scale: 1:4,514

Date created: 2024/05/08



**Western Cape
Government**
FOR YOU

© OpenStreetMap (and) contributors, CC-BY-SA