

Louise-Mari van Zyl

2021



17 Progress Street, George
PO Box 2070, George, 6530
Tel- 044 8740365
Cell – 071 603 4132
Fax – 044 875 0432
louise@cape-eaprac.co.za
www.cape-eaprac.co.za

EDUCATION

University of Stellenbosch

Masters: Geography & Environmental Studies
2006

BA Honours: Geography & Environmental Studies with GIS
2001

BA Geography & Environmental Studies
2000

PROFESSIONAL REGISTRATION

Registered Environmental Assessment Practitioner (EAP) with the
Environmental Assessment Practitioners Association of South Africa
(EAPASA) – Reg. No: 2019/1444

PROFESSIONAL SOCIETIES

Member of International Association of Impact Assessments South
Africa (IAIASa)

WORK EXPERIENCE

Managing Director | Cape EAPrac, George

2008 – Present

Senior Environmental Consultant & Public Participation Facilitator | Doug Jeffery Environmental Consultants, Paarl

2007 - 2008

Senior Environmental Consultant & Public Participation Facilitator | Hilland Associates, George

2002 – 2007

CORE COMPETENCIES

Practicing as an EAP since 2002 I have gained experience with a variety of projects working in the **Eastern Cape, Western Cape, Kwazulu Natal, Gauteng and Northern Cape Provinces**.

My work requires of me to be acquainted with relevant local and international conservation / environmental management policies and legislation, least of which are the National Environmental Management Act, National Environmental Management Waste Act, National Environmental Management Air Quality Act, National Environmental Management Biodiversity Act, Integrated Coastal Management Act, Protected Areas Act, Outeniqua Sensitive Coastal Areas Regulations, the 2014 Environmental Regulations, National Water Act, National Heritage Resources Act and numerous conservation related regulations and guidelines that form the basis of environmental management.

In addition to being the senior EAP on various applications, I am also responsible for overseeing applications handled by all of *Cape EAPrac's* staff, as well as the review of reports prior to submission for consideration by the competent authorities.

Liaison with specialists and Clients form a large component of my daily responsibilities in the form of project management to ensure quality and time/cost management.

It is my responsibility to ensure training and orientation of all incoming staff at *Cape EAPrac*.

PROFFESIONAL PORTFOLIO

ENVIRONMENTAL IMPACT ASSESSMENT, BASIC ASSESSMENT & EMP'S

- **Infrastructure:** Overhead transmission lines with associated substations (standalone or associated with renewable energy projects), construction and expansion of roads, flood damage road rehabilitation, stormwater retention facilities, sewage works, potable water supply networks.
- **Human Settlements:** Facilitate various scale residential developments with associated infrastructure. Environmental expert on the Eden PRT project team from 2012 (ongoing) facilitating various scale subsidised housing projects (upgrades and green fields) for Knysna Municipality, Oudtshoorn Municipality, George Municipality and Mossel Bay Municipality.
- **Renewable Energy:** Facilitating various applications for Wind Farms, Solar Farms, Biogas Waste-to-Energy and Composting applications.
- **Agricultural:** Applications for the construction and expansion of abattoirs of various scales, feedlots, piggeries and orchard establishments.
- **Integrated environmental management:** Environmental management and maintenance plans, environmental monitoring & control functions, environmental auditing.
- **Biogas:** Facilitated the task team for the development of Norms & Standards for the treatment of Organic Waste in South Africa. Overseeing drafting of the Motivation Report and Norms & Standards for submission to the national Department of Environmental Affairs.
Co-author of the Legislative Analysis for Biogas in South Africa for the Deutsche Gesellschaft für Internationale Zusammenarbeit GmbH (GIZ).

WASTE MANAGEMENT LICENCES

- **Waste Management Licenses:** Facilitating applications for feedlots, dairy's, waste water discharge for the handling/treatment and disposal;

- **Applications for** composting and anaerobic biogas waste-to-energy projects with organic material at dairies, feedlots, abattoirs and fruit juice factories.

WATER RELATED

- **Desalination:** Application for 1.5Mgl beach intake desalination plant for Knysna Municipality and 300kl reverse osmosis desalination plant at Witsand. Including impact assessment, construction monitoring as well as operational and maintenance control functions since installation.
- **Dams:** Various applications for the construction of new storage dams and reservoirs for Municipal water supply and agricultural irrigation practices.
- **Water supply and storage infrastructure:** Installation of gabions, pipelines and reservoirs for water storage.

AIR EMISSION LICENSES

- **Air Emission Licenses:** Facilitating applications for sawmills, wood drying facilities, tanneries, brick manufacturing (clamp & vertical shaft kilns), asphalt manufacturing (macadam processes), rendering plants, coal dust fallout management, bitumen emulsion, creosote processes, as well as renewal of existing licenses and conversion of old APPA permits..

SECTION 24G RECTIFICATION APPLICATIONS

- **S24G processes:** Facilitating rectification assessment processes for listed activities that commenced unlawfully ito NEMA, NEMWA and NEMAQA (ranging from roads, storm water infrastructure, vegetation clearing, construction activities, air emission generation activities, waste management activities, wetland/riparian disturbances, dams).

ACADEMIA

- **Part-time lecturer** at the Nelson Mandela University (George Campus) teaching Environmental Management at first year level since 2019.

OTHER

- **Coastal Discharge permits:** Applications for various existing commercial factories in the Mossel Bay Harbour and Witsand Desalination Plan ito the Integrated Coastal Management Act (ICMA) for discharge of their effluent.
- **Environmental Control & Management:** (ECO) Management of construction activities to ensure compliance with environmental approvals and environmental management plans.
- **Rehabilitation:** Rehabilitation plans for disturbed areas and rivers/riparian areas.
- Assistance to the **National Red Meat & Abattoir Association (RMAA)** with formulating Norms & Standards for Red Meat Abattoir waste, focusing specifically on anaerobic digestion through biogas, composting, alkaline hydrolysis and micro-rendering.
- **Environmental awareness & training:** Induction of contractor teams and labourers associated with alien clearing projects, rehabilitation projects, construction projects, as well as school groups for site inspection and environmental awareness outings.



Cape EAPrac Company Profile

Registered Environmental Assessment Practitioner:
Number 2019/1444

Cape Environmental Assessment Practitioners (Pty) Ltd was established in March 2008 by Directors **Doug Jeffery** and **Louise-Mari van Zyl**. The full time professional team includes: **Melissa Mackay** (Practitioner / GIS / ECO), **Dale Holder** (Practitioner / GIS / ECO), **Siân Holder** (Practitioner / Environmental Education), **Onke Nandipha** (Junior Practitioner / ECO) and **Carin Naudé** (Business Administrator).

The firm implements legislation under the National Environmental Management Act (NEMA), National Environmental Management: Waste Act (NEM:WA) and the National Environmental Management: Air Quality Act (NEM:AQA).

Our main services include:

- Environmental Impact Assessments (EIA's & Basic Assessments)
- Environmental Management Policies & Plans (EMMP's)
- Environmental Control & Monitoring (ECO)
- Environmental Audits
- Environmental Education & Interpretation
- Environmental Constraints Analysis
- Public Participation & Stakeholder Engagement
- Outeniqua Sensitive Coastal Area Permits (OSCA)
- Forestry Applications (for removal/pruning of protected species)
- GIS & Mapping
- Retrospective Damage Assessment (Section 24G)
- Rehabilitation Plans
- Coastal Water Discharge Permits
- Air Quality Licence Applications (AEL's)
- Waste Management Licence Applications (Waste Licence)

PO Box 2070
17 Progress Street
6530 GEORGE

Tel: +27 44 874 0365
Fax: +27 44 874 0432
Cell: +27 71 603 4132

www.cape-eaprac.co.za



The Team

Doug Jeffery - Director

Doug Jeffery obtained a BSc with majors in Botany and Zoology at the University of Cape Town (UCT) and went on to obtain his MSc in Botany also at UCT. He has worked extensively in the Western-, Southern- and Eastern Cape both as a professional Botanist and co-ordinating EIA processes for over 20 years. He has been registered with the South African Council for Natural Scientific Professions as a Natural Scientist since 1990. He is also registered with the Environmental Assessment Practitioners Association of South Africa.

email: doug@dougjeff.co.za



Melissa Mackay

Senior Practitioner / GIS / ECO

Melissa obtained her National Diploma in Nature Conservation from PE Technicon in 1996 and a BTech from NMMU in 2013. She gained experience in various fields, including animal handler & farm manager in the United Arab Emirates (1997-1999), Tourism Manager for the Western Cape Nature Conservation Board (now Cape Nature) and onboard observer on commercial fishing vessels. She started working as an Environmental Practitioner in 2006. Her main duties include Process Management for Environmental Impact Assessment, GIS & Mapping, Damage Assessments, Environmental Management Plans, ECO and Public Participation. She is registered as an EAP with the Environmental Assessment Practitioners Association of South Africa.

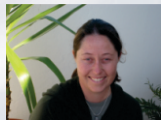
email: mel@cape-eaprac.co.za



Siân Holder - Practitioner / ECO

Siân has a National Diploma in Nature Conservation, a BTech Nature Con (NMMU) and a Masters Degree in Environmental Education (Rhodes University). She worked at Tsitsikamma National Park as an Environmental Education Officer on environmental education programmes for Wilderness Foundation SA. She then served as the Experiential Education Manager and wilderness guide for Wilderness Foundation. She joined the environmental consulting vocation in 2008.

email: sian@cape-eaprac.co.za



Louise-Mari van Zyl

Director / Principal Practitioner

Louise-Mari van Zyl holds a Masters degree in Geography & Environmental Sciences from the University of Stellenbosch. She worked as an Environmental Assessment Practitioner (EAP) since 2002 on projects in the Eastern, Southern, Western & Northern Cape provinces. She is registered as an EAP with the Environmental Assessment Practitioners Association of South Africa.

email: louise@cape-eaprac.co.za



Dale Holder

Senior Practitioner / GIS / ECO

Dale graduated from the Technicon Pretoria in 1999 with a National Diploma in Nature Conservation. He worked as a Socio-Ecologist for SANParks and as Project Manager for the Department of Marine and Coastal Management. He started working as an environmental practitioner in 2002. He has experience in Environmental Planning, Environmental Management Plans and Frameworks, Process Management of Environmental Impact Assessments, GIS & Mapping, Environmental Control and Rehabilitation Management & Design.

email: dale@cape-eaprac.co.za



Carin Naudé

Business Administrator

Carin obtained a BBA degree through UNISA. She gained extensive experience in business management and administration since 1988. She joined Cape EAPrac in June 2008 and is responsible for the day to day administrative functions of the business. Her acquired knowledge and leadership skills enables the rest of the team to function efficiently in their respective fields.

email: carin@cape-eaprac.co.za



Onke Nandipha

Junior Practitioner / ECO

Onke obtained a BSc in Environmental Sciences (2017) and a BSc Honours in Geography in 2018. He is appointed to gain practical knowledge and experience in the environmental management field. His excellent communication skills in both English and Xhosa, combined with his knowledge and understanding of environmental management makes him a valuable asset on projects where language barriers are a constraint.

email: onke@cape-eaprac.co.za



PROJECT EXPERIENCE INCLUDES

Reverse Osmosis Desalination; Sensitive Environmental Management including National Parks/Conservation Areas & World Heritage Sites; Renewable Energy Projects (Solar & Wind); Waste Management License Applications for Waste Disposal Sites, Sewerage Plants & Abattoirs; Waste-to-Energy Projects including Biogas Facilities; Marine Aquaculture; Filling Stations; Air Emission Processes for Sawmills, Brick Works & Processing Plants; ECO responsibilities on Private & State Housing Developments, Provincial & Municipal Roads and Infrastructure, Private, Provincial & Municipal applications for development of infrastructure, housing & commercial components

LIST OF ONGOING **CAPE EAPRAC**
PROJECTS IS AVAILABLE
ON REQUEST.
PLEASE VISIT OUR
WEBSITE FOR MORE DETAILS
www.cape-eaprac.co.za

