

# CBA & ESA MAP (YELLOW LINE: PREFERRED PIPELINE ROUTE)



## Legend

- BSP ESA: Restore
  - ESA2: Restore from other land use
- BSP CBA: Degraded
  - CBA2: Aquatic
  - CBA2: Terrestrial
- BSP CBA
  - CBA: Terrestrial
  - CBA: Forest
  - CBA: River
  - CBA: Wetland

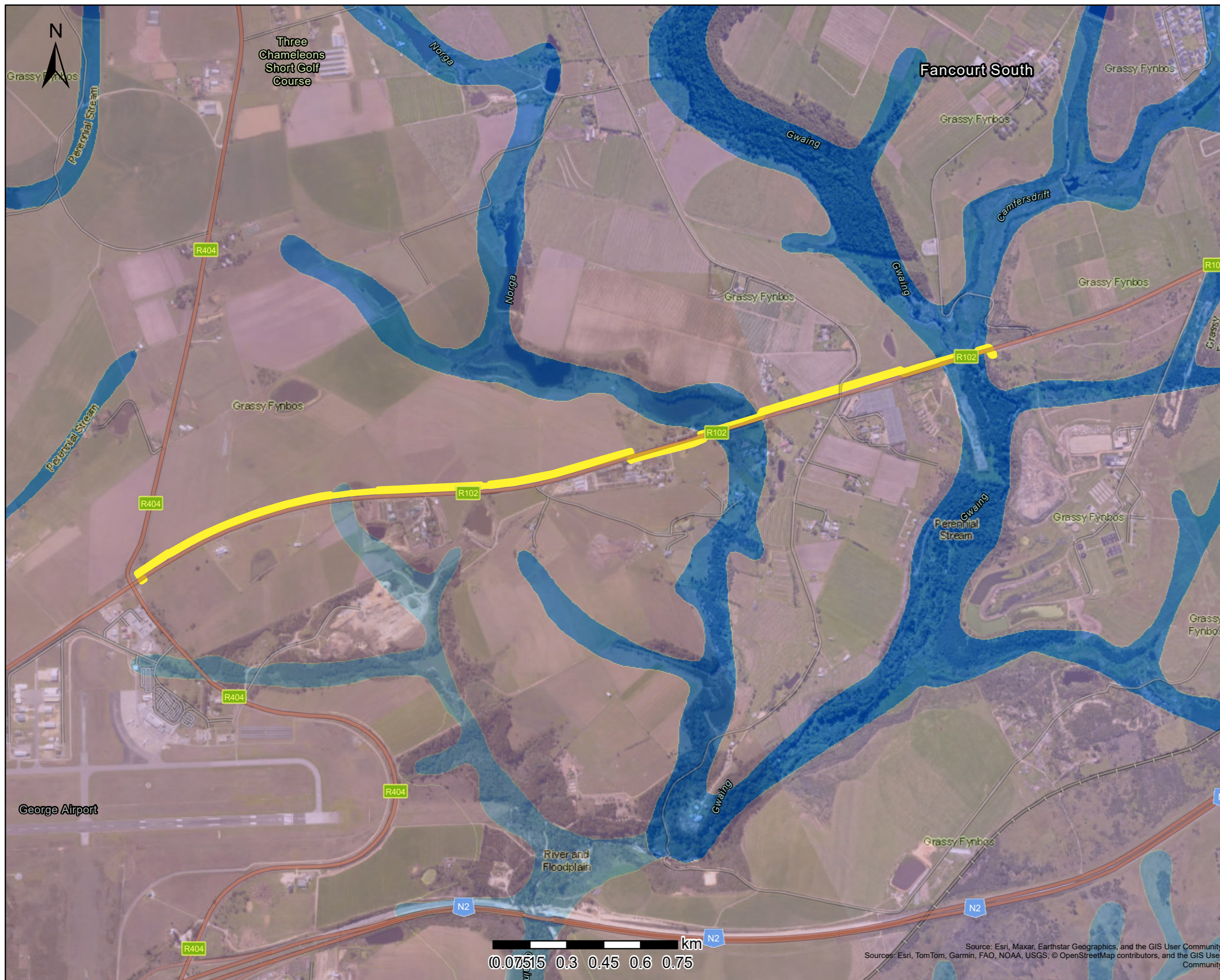
**Map Center:** Lon: 22°24'3.1"E  
 Lat: 33°59'34.1"S  
**Scale:** 1:18,056  
**Date created:** 2024/11/08



Source: Esri, Maxar, Earthstar Geographics, and the GIS User Community  
 Sources: Esri, TomTom, Garmin, FAO, NOAA, USGS, © OpenStreetMap contributors, and the GIS User Community



# VLOK VEGMAP



## Legend

Vlok Vegmap - Biome

- Drain
- Fynbos
- Source

Map Center: Lon: 22°24'8.7"E  
Lat: 33°59'36.1"S

Scale: 1:18,056

Date created: 2024/11/08



Western Cape  
Government  
FOR YOU

Source: Esri, Maxar, Earthstar Geographics, and the GIS User Community  
Sources: Esri, TomTom, Garmin, FAO, NOAA, USGS, © OpenStreetMap contributors, and the GIS User Community

0 0.075 0.15 0.3 0.45 0.6 0.75 km



# SANBI RED LIST: REMNANT MAP



## Legend

Red List of Ecosystems Remnants

■ Critically Endangered

■ Endangered

**Map Center:** Lon: 22°24'3.1"E  
Lat: 33°59'34.1"S

**Scale:** 1:18,056

**Date created:** 2024/11/08



**Western Cape  
Government**  
**FOR YOU**

Source: Esri, Maxar, Earthstar Geographics, and the GIS User Community  
Sources: Esri, TomTom, Garmin, FAO, NOAA, USGS, © OpenStreetMap contributors, and the GIS User Community



# RIVER AND WETLAND MAP



## Legend

### Wetlands (NWM5)

- Channelled valley-bottom wetland
- Depression wetland
- Seep wetland
- Unchannelled valley-bottom wetland

### Wetlands (NFEPA)

- Artificial
- Natural

### Rivers

- Perennial
- Non-Perennial

### Rivers (DWS)

- Perennial
- NonPerennial

**Map Center:** Lon: 22°24'3.1"E  
Lat: 33°59'34.1"S

**Scale:** 1:18,056

**Date created:** 2024/11/08



**Western Cape  
Government**

**FOR YOU**



# GEOLOGICAL MAP



## Legend

**Map Center:** Lon: 22°24'8.7"E  
Lat: 33°59'36.1"S

**Scale:** 1:18,056

**Date created:** 2024/11/08



**Western Cape  
Government**  
**FOR YOU**

Source: Esri, Maxar, Earthstar Geographics, and the GIS User Community  
Sources: Esri, TomTom, Garmin, FAO, NOAA, USGS, © OpenStreetMap contributors, and the GIS User Community