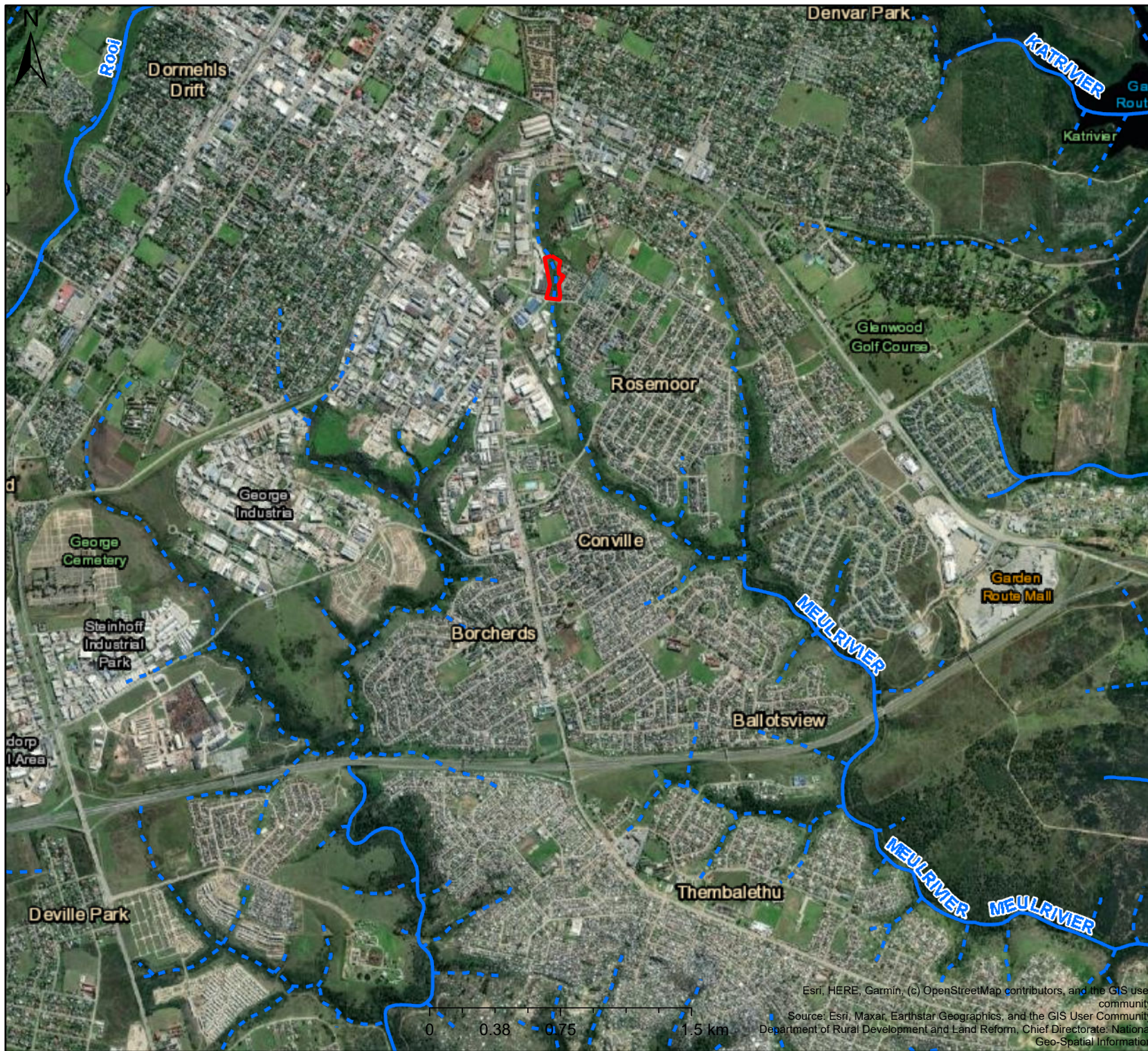


# Site Locality Map



## Legend

### Rivers

- Perennial
- - - Non-Perennial

### Rivers (DWS)

- - - NonPerennial

Map Center: Lon: 22°28'34.8"E  
Lat: 33°59'1.1"S

Scale: 1:36 112

Date created: July 27, 2022

Esri, HERE, Garmin, (c) OpenStreetMap contributors, and the GIS user community  
Source: Esri, Maxar, Earthstar Geographics, and the GIS User Community  
Department of Rural Development and Land Reform, Chief Directorate: National Geo-Spatial Information



Western Cape  
Government

FOR YOU

Agriculture



# Site Locality Map

## Legend

### Rivers

- - - Non-Perennial

**Map Center:** Lon: 22°28'27.8"E  
 Lat: 33°58'15.1"S

**Scale:** 1:4 514

**Date created:** July 27, 2022



**Western Cape  
 Government**  
**FOR YOU**

Agriculture

© 2022 Microsoft Corporation © 2022 Maxar © CNES (2022) Distribution Airbus DS © 2022 TomTom  
 Department of Rural Development and Land Reform, Chief Directorate: National Geo-Spatial Information