



Conservation Map

Legend

- Erf
- BSP ESA: Restore**
- ESA2: Restore from other land use
- BSP CBA: Degraded**
- CBA2: Terrestrial
- BSP CBA**
- CBA: Wetland
- Rivers**
- Non-Perennial

Map Center: Lon: 22°28'28.4"E
 Lat: 33°58'13.6"S

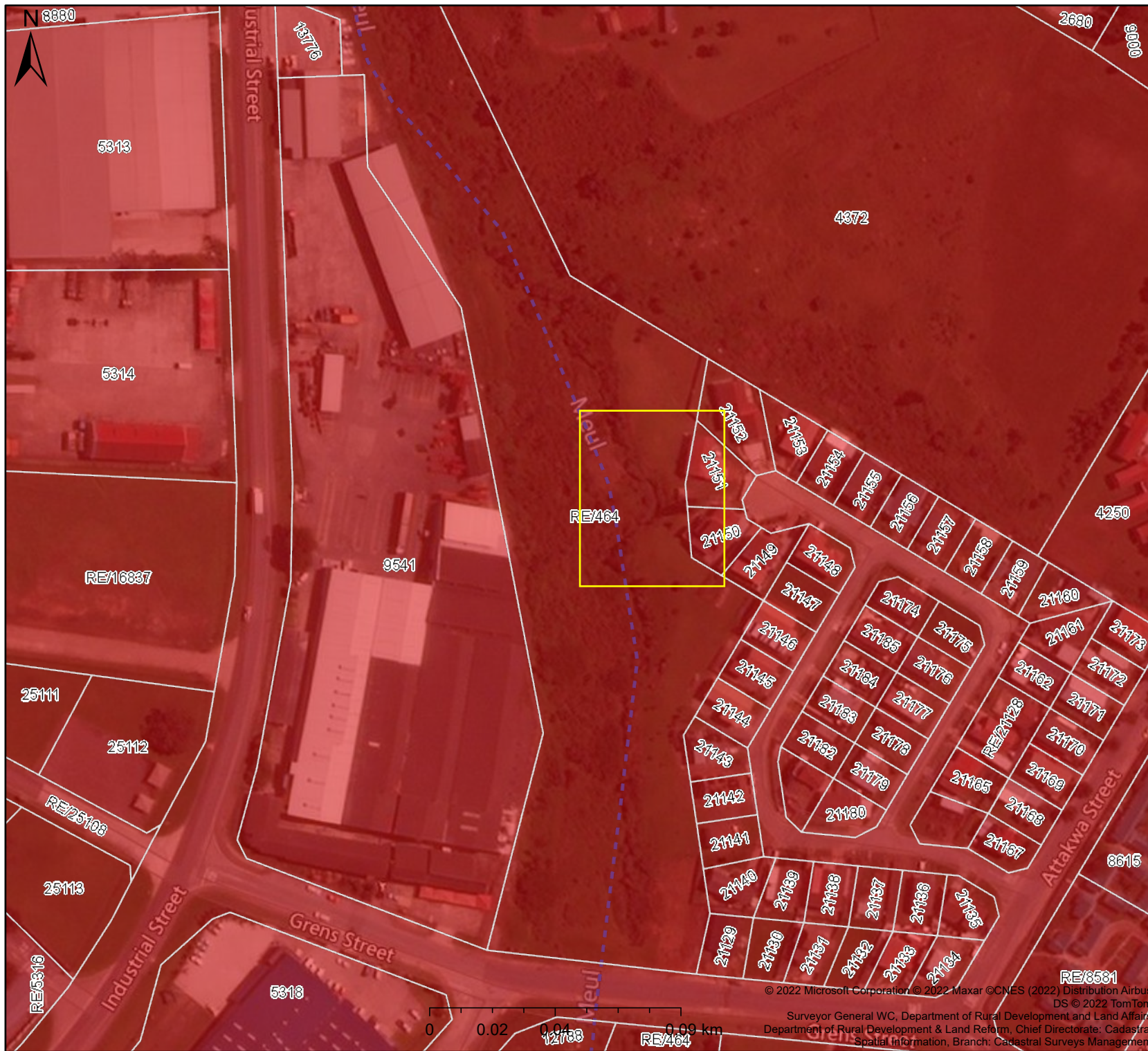
Scale: 1:2 257

Date created: August 1, 2022



Western Cape Government
FOR YOU

Agriculture



Ecosystem Threat Status Map

Legend

Erf

Ecosystem Threat Status 2016

Status

CR

Rivers

Non-Perennial

Map Center: Lon: 22°28'28.4"E
Lat: 33°58'13.6"S

Scale: 1:2 257

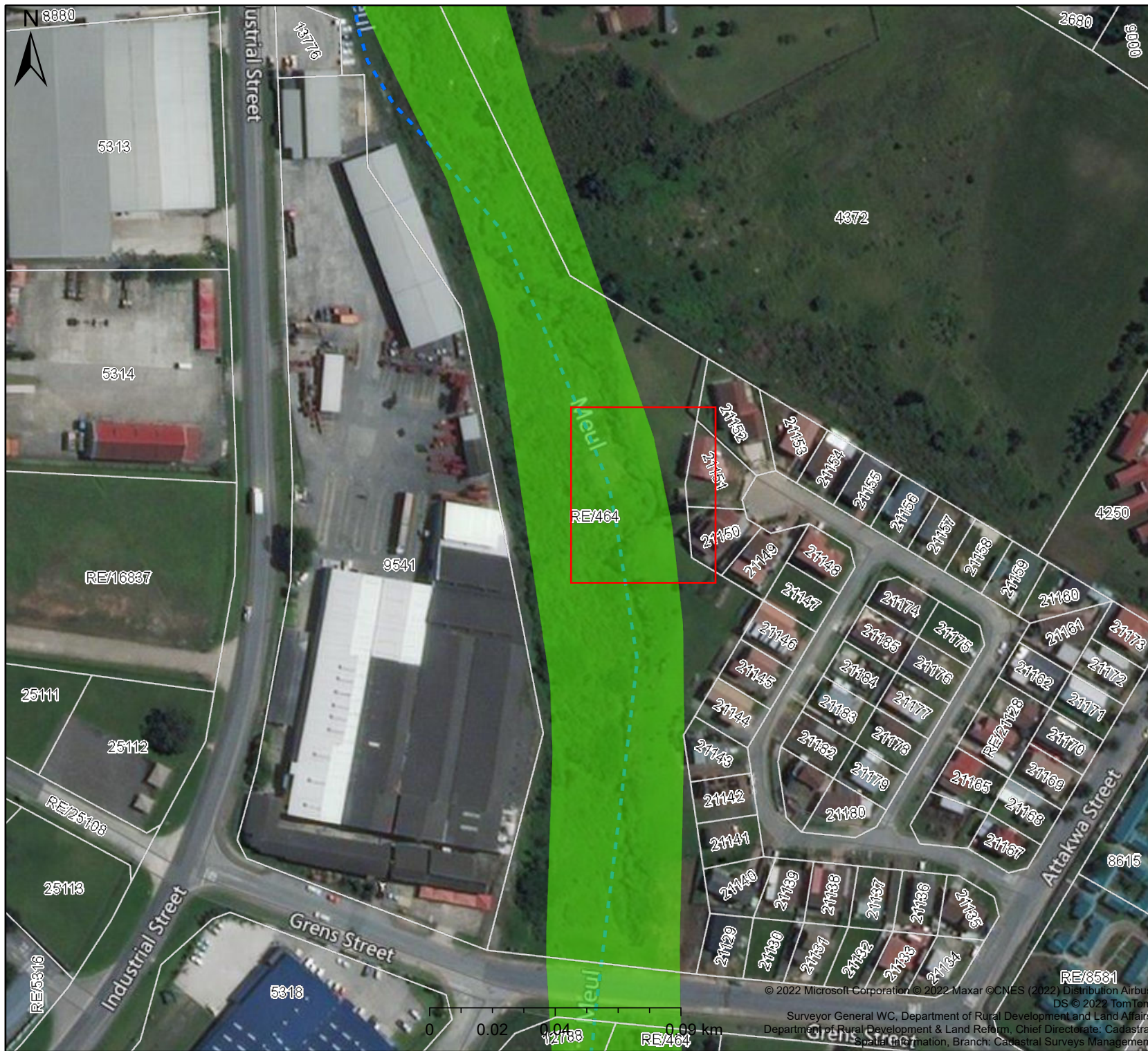
Date created: August 1, 2022



**Western Cape
Government**
FOR YOU

Agriculture

© 2022 Microsoft Corporation © 2022 Maxar © CNES (2022) Distribution Airbus
DS © 2022 TomTom
Surveyor General WC, Department of Rural Development and Land Affairs
Department of Rural Development & Land Reform, Chief Directorate: Cadastral
Spatial Information, Branch: Cadastral Surveys Management



Wetland Map

Legend

- Erf
- Wetlands (NWM5)**
- Classification
- Unchannelled valley-bottom wetland
- Rivers**
- Non-Perennial

Map Center: Lon: 22°28'28.4"E
 Lat: 33°58'13.6"S

Scale: 1:2 257

Date created: August 1, 2022



Western Cape Government
FOR YOU

Agriculture

© 2022 Microsoft Corporation © 2022 Maxar © CNES (2022) Distribution Airbus DS © 2022 TomTom
 Surveyor General WC, Department of Rural Development and Land Affairs
 Department of Rural Development & Land Reform, Chief Directorate: Cadastral
 Spatial Information, Branch: Cadastral Surveys Management