

**SCREENING REPORT FOR AN ENVIRONMENTAL AUTHORIZATION AS
REQUIRED BY THE 2014 EIA REGULATIONS – PROPOSED SITE
ENVIRONMENTAL SENSITIVITY**

EIA Reference number: TBC

Project name: Gourits Glamping

Project title: Gourits Glamping

Date screening report generated: 04/04/2024 11:47:07

Applicant: M&P Distributions (Pty) Ltd

Compiler: Cape EAPrac

Compiler signature: *M Byleveld*

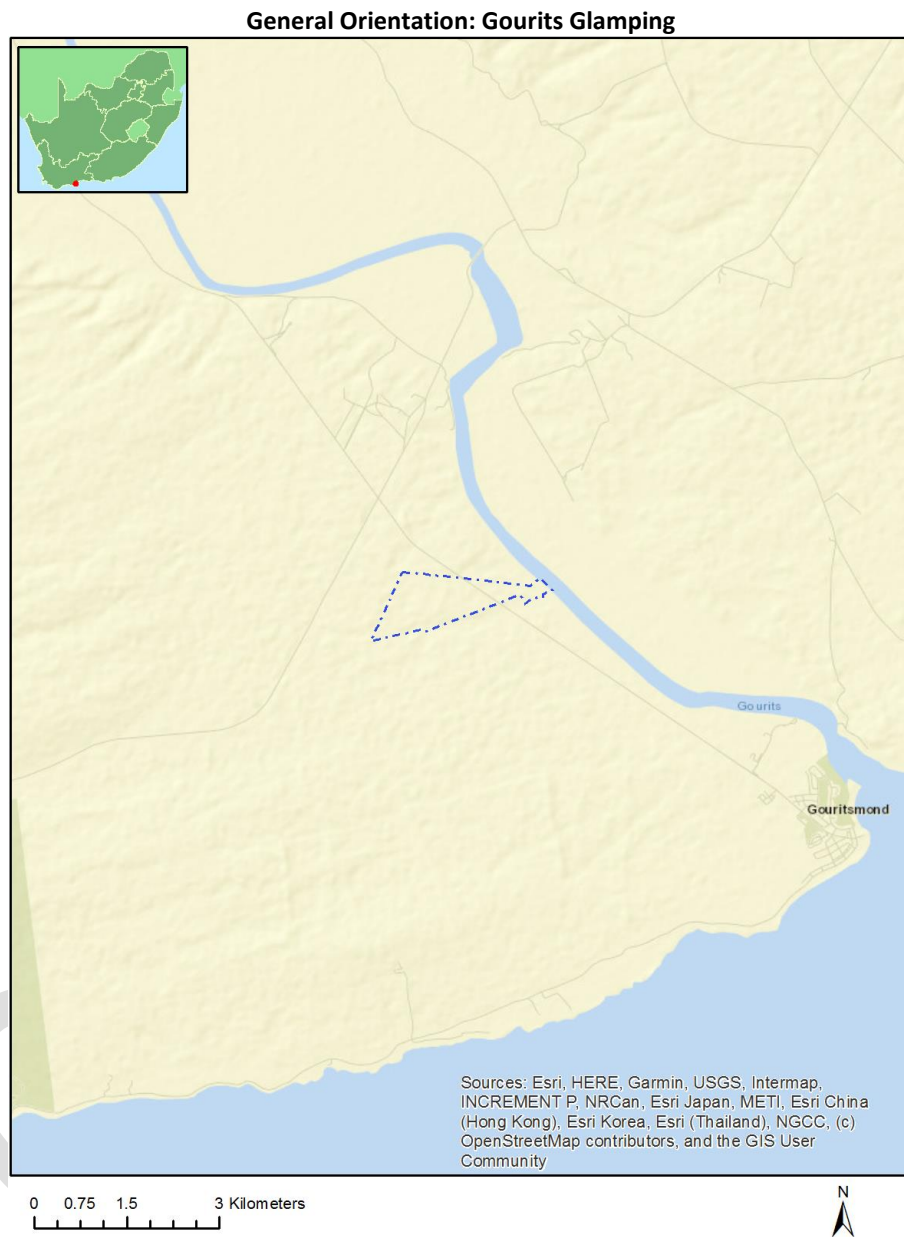
Application Category: Transformation of land | Indigenous vegetation

Table of Contents

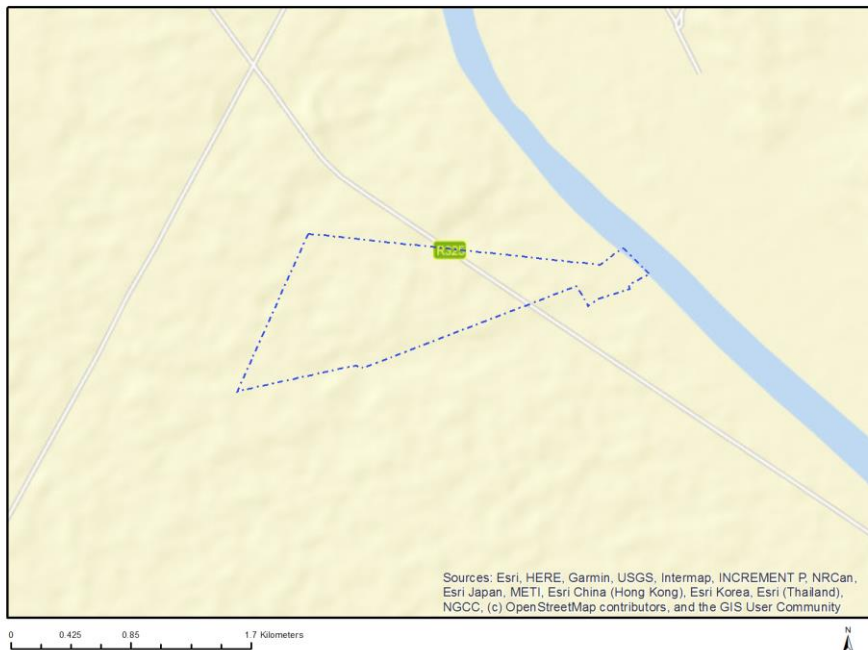
| | |
|---|----|
| Proposed Project Location | 3 |
| Orientation map 1: General location | 3 |
| Map of proposed site and relevant area(s) | 4 |
| Cadastral details of the proposed site | 4 |
| Wind and Solar developments with an approved Environmental Authorisation or applications under consideration within 30 km of the proposed area | 4 |
| Environmental Management Frameworks relevant to the application | 5 |
| Environmental screening results and assessment outcomes | 5 |
| Relevant development incentives, restrictions, exclusions or prohibitions | 5 |
| Proposed Development Area Environmental Sensitivity | 5 |
| Specialist assessments identified | 5 |
| Results of the environmental sensitivity of the proposed area | 7 |
| MAP OF RELATIVE AGRICULTURE THEME SENSITIVITY | 7 |
| MAP OF RELATIVE ANIMAL SPECIES THEME SENSITIVITY | 8 |
| MAP OF RELATIVE AQUATIC BIODIVERSITY THEME SENSITIVITY | 9 |
| MAP OF RELATIVE ARCHAEOLOGICAL AND CULTURAL HERITAGE THEME SENSITIVITY | 10 |
| MAP OF RELATIVE CIVIL AVIATION THEME SENSITIVITY | 11 |
| MAP OF RELATIVE DEFENCE THEME SENSITIVITY | 12 |
| MAP OF RELATIVE PALEONTOLOGY THEME SENSITIVITY | 13 |
| MAP OF RELATIVE PLANT SPECIES THEME SENSITIVITY | 14 |
| MAP OF RELATIVE TERRESTRIAL BIODIVERSITY THEME SENSITIVITY | 16 |

Proposed Project Location

Orientation map 1: General location



Map of proposed site and relevant area(s)



Cadastral details of the proposed site

Property details:

| No | Farm Name | Farm/ Erf No | Portion | Latitude | Longitude | Property Type |
|----|------------------|--------------|---------|--------------|--------------|---------------|
| 1 | MELKHOUTEFONTEIN | 449 | 0 | 34°18'30.68S | 21°48'6.71E | Farm |
| 2 | MELKHOUTEFONTEIN | 449 | 11 | 34°19'23.82S | 21°49'28.67E | Farm Portion |

Development footprint¹ vertices:

No development footprint(s) specified.

Wind and Solar developments with an approved Environmental Authorisation or applications under consideration within 30 km of the proposed area

| No | EIA Reference No | Classification | Status of application | Distance from proposed area (km) |
|----|-------------------|----------------|-----------------------|----------------------------------|
| 1 | 12/12/20/2536 | Wind | Approved | 29.4 |
| 2 | 12/12/20/2536/AM3 | Wind | Approved | 29.4 |
| 3 | 12/12/20/1815/2 | Wind | Approved | 25.6 |
| 4 | 12/12/20/2536/AM4 | Wind | Approved | 29.4 |

¹ "development footprint", means the area within the site on which the development will take place and includes all ancillary developments for example roads, power lines, boundary walls, paving etc. which require vegetation clearance or which will be disturbed and for which the application has been submitted.

| | | | | |
|---|-----------------|------|----------|------|
| 5 | 12/12/20/1815/1 | Wind | Approved | 16.9 |
|---|-----------------|------|----------|------|

Environmental Management Frameworks relevant to the application

No intersections with EMF areas found.

Environmental screening results and assessment outcomes

The following sections contain a summary of any development incentives, restrictions, exclusions or prohibitions that apply to the proposed development site as well as the most environmental sensitive features on the site based on the site sensitivity screening results for the application classification that was selected. The application classification selected for this report is:

Transformation of land | Indigenous vegetation.

Relevant development incentives, restrictions, exclusions or prohibitions

The following development incentives, restrictions, exclusions or prohibitions and their implications that apply to this site are indicated below.

| Incentive, restriction or prohibition | Implication |
|---------------------------------------|---|
| South African Conservation Areas | https://screening.environment.gov.za/ScreeningDownloads/DevelopmentZones/SACAD_OR_2023_Q3_Metadata.pdf |

Proposed Development Area Environmental Sensitivity

The following summary of the development site environmental sensitivities is identified. Only the highest environmental sensitivity is indicated. The footprint environmental sensitivities for the proposed development footprint as identified, are indicative only and must be verified on site by a suitably qualified person before the specialist assessments identified below can be confirmed.

| Theme | Very High sensitivity | High sensitivity | Medium sensitivity | Low sensitivity |
|--|-----------------------|------------------|--------------------|-----------------|
| Agriculture Theme | | X | | |
| Animal Species Theme | | X | | |
| Aquatic Biodiversity Theme | X | | | |
| Archaeological and Cultural Heritage Theme | | | | X |
| Civil Aviation Theme | | X | | |
| Defence Theme | | | | X |
| Paleontology Theme | X | | | |
| Plant Species Theme | | | X | |
| Terrestrial Biodiversity Theme | X | | | |

Specialist assessments identified

Based on the selected classification, and the known impacts associated with the proposed development, the following list of specialist assessments have been identified for inclusion in the assessment report. It is the responsibility of the EAP to confirm this list and to motivate in the

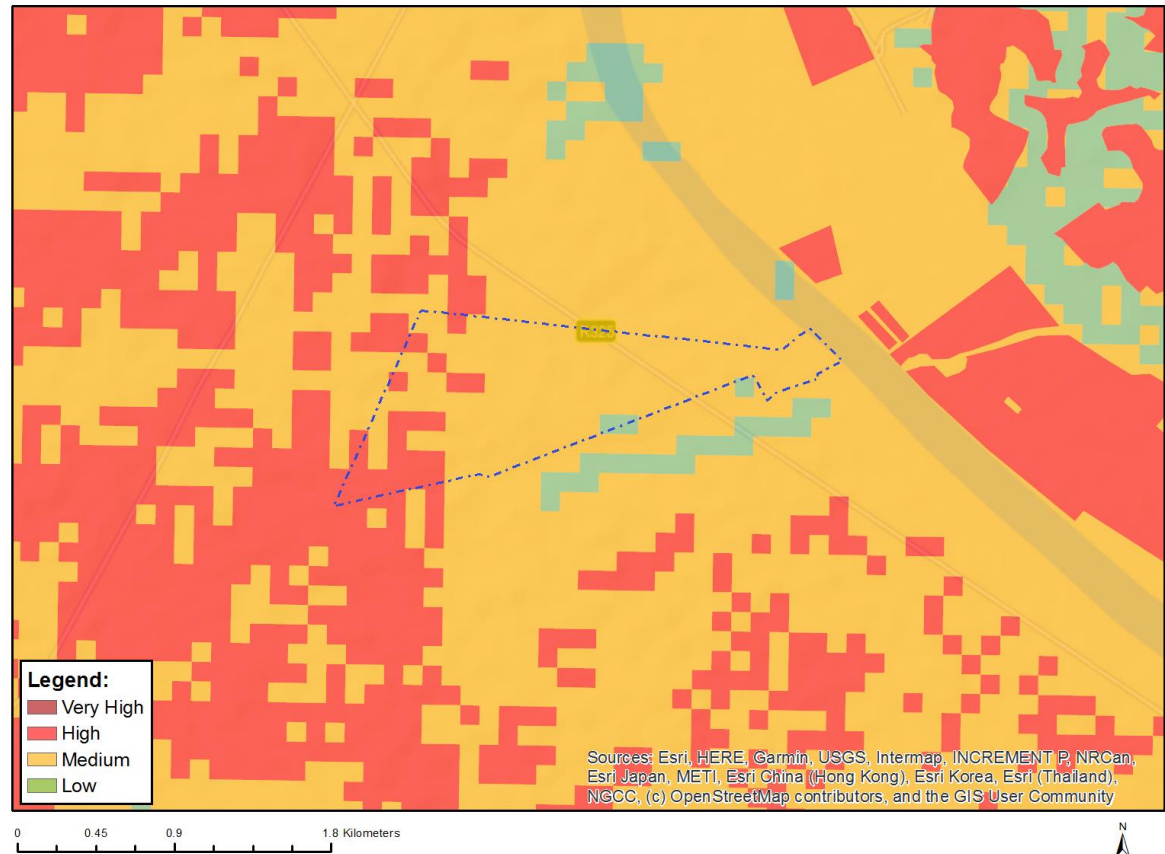
assessment report, the reason for not including any of the identified specialist study including the provision of photographic evidence of the site situation.

| No | Specialist assessment | Assessment Protocol |
|----|--|---|
| 1 | Landscape/Visual Impact Assessment | https://screening.environment.gov.za/ScreeningDownloads/AssessmentProtocols/Gazetted General Requirement Assessment Protocols.pdf |
| 2 | Archaeological and Cultural Heritage Impact Assessment | https://screening.environment.gov.za/ScreeningDownloads/AssessmentProtocols/Gazetted General Requirement Assessment Protocols.pdf |
| 3 | Palaeontology Impact Assessment | https://screening.environment.gov.za/ScreeningDownloads/AssessmentProtocols/Gazetted General Requirement Assessment Protocols.pdf |
| 4 | Terrestrial Biodiversity Impact Assessment | https://screening.environment.gov.za/ScreeningDownloads/AssessmentProtocols/Gazetted Terrestrial Biodiversity Assessment Protocols.pdf |
| 5 | Aquatic Biodiversity Impact Assessment | https://screening.environment.gov.za/ScreeningDownloads/AssessmentProtocols/Gazetted Aquatic Biodiversity Assessment Protocols.pdf |
| 6 | Socio-Economic Assessment | https://screening.environment.gov.za/ScreeningDownloads/AssessmentProtocols/Gazetted General Requirement Assessment Protocols.pdf |
| 7 | Plant Species Assessment | https://screening.environment.gov.za/ScreeningDownloads/AssessmentProtocols/Gazetted Plant Species Assessment Protocols.pdf |
| 8 | Animal Species Assessment | https://screening.environment.gov.za/ScreeningDownloads/AssessmentProtocols/Gazetted Animal Species Assessment Protocols.pdf |

Results of the environmental sensitivity of the proposed area.

The following section represents the results of the screening for environmental sensitivity of the proposed site for relevant environmental themes associated with the project classification. It is the duty of the EAP to ensure that the environmental themes provided by the screening tool are comprehensive and complete for the project. Refer to the disclaimer.

MAP OF RELATIVE AGRICULTURE THEME SENSITIVITY

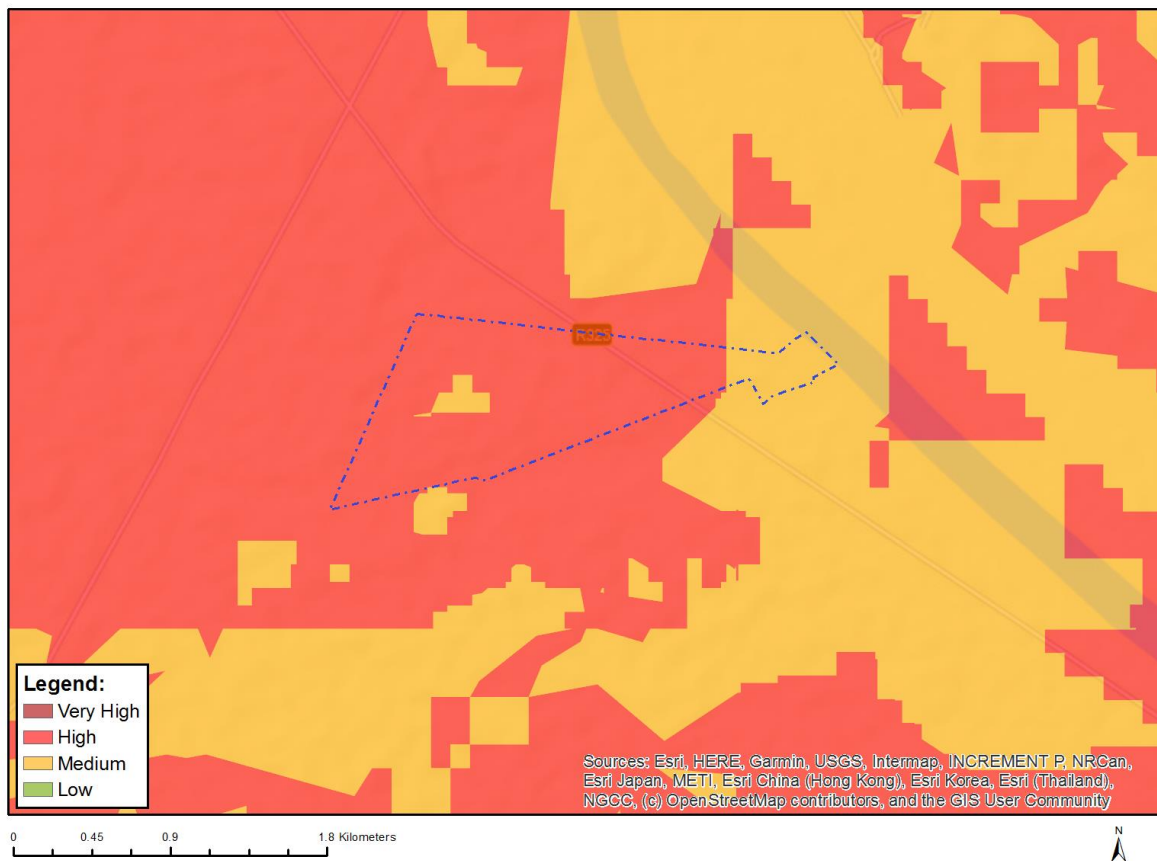


| Very High sensitivity | High sensitivity | Medium sensitivity | Low sensitivity |
|-----------------------|------------------|--------------------|-----------------|
| | X | | |

Sensitivity Features:

| Sensitivity | Feature(s) |
|-------------|---|
| High | Land capability;09. Moderate-High/10. Moderate-High |
| Low | Land capability;01. Very low/02. Very low/03. Low-Very low/04. Low-Very low/05. Low |
| Medium | Land capability;06. Low-Moderate/07. Low-Moderate/08. Moderate |

MAP OF RELATIVE ANIMAL SPECIES THEME SENSITIVITY



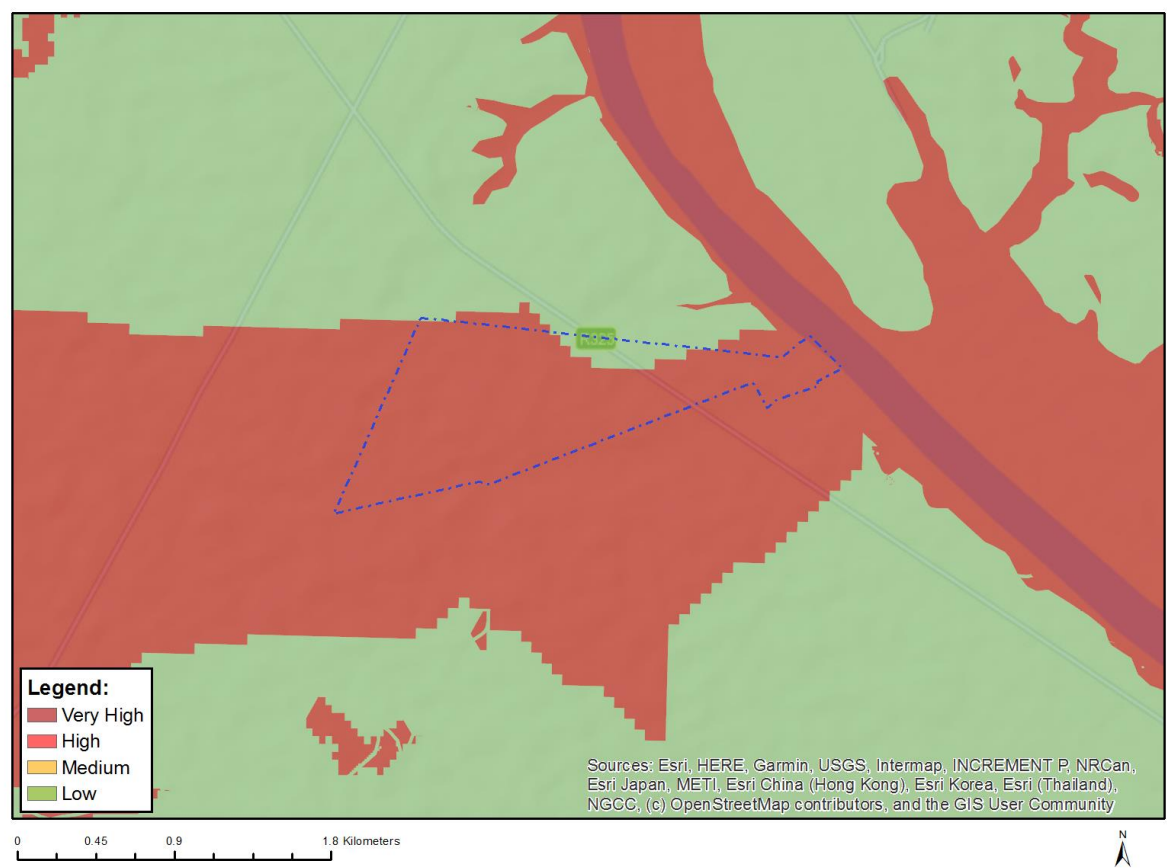
Where only a sensitive plant unique number or sensitive animal unique number is provided in the screening report and an assessment is required, the environmental assessment practitioner (EAP) or specialist is required to email SANBI at eiadatarequests@sanbi.org.za listing all sensitive species with their unique identifiers for which information is required. The name has been withheld as the species may be prone to illegal harvesting and must be protected. SANBI will release the actual species name after the details of the EAP or specialist have been documented.

| Very High sensitivity | High sensitivity | Medium sensitivity | Low sensitivity |
|-----------------------|------------------|--------------------|-----------------|
| | X | | |

Sensitivity Features:

| Sensitivity | Feature(s) |
|-------------|------------------------------------|
| High | Aves-Circus ranivorus |
| High | Aves-Circus maurus |
| High | Aves-Neotis denhami |
| High | Aves-Bradypterus sylvaticus |
| High | Aves-Polemaetus bellicosus |
| Medium | Aves-Stephanoaetus coronatus |
| Medium | Aves-Afrotis afra |
| Medium | Sensitive species 5 |
| Medium | Sensitive species 8 |
| Medium | Invertebrate-Aneuryphymus montanus |

MAP OF RELATIVE AQUATIC BIODIVERSITY THEME SENSITIVITY

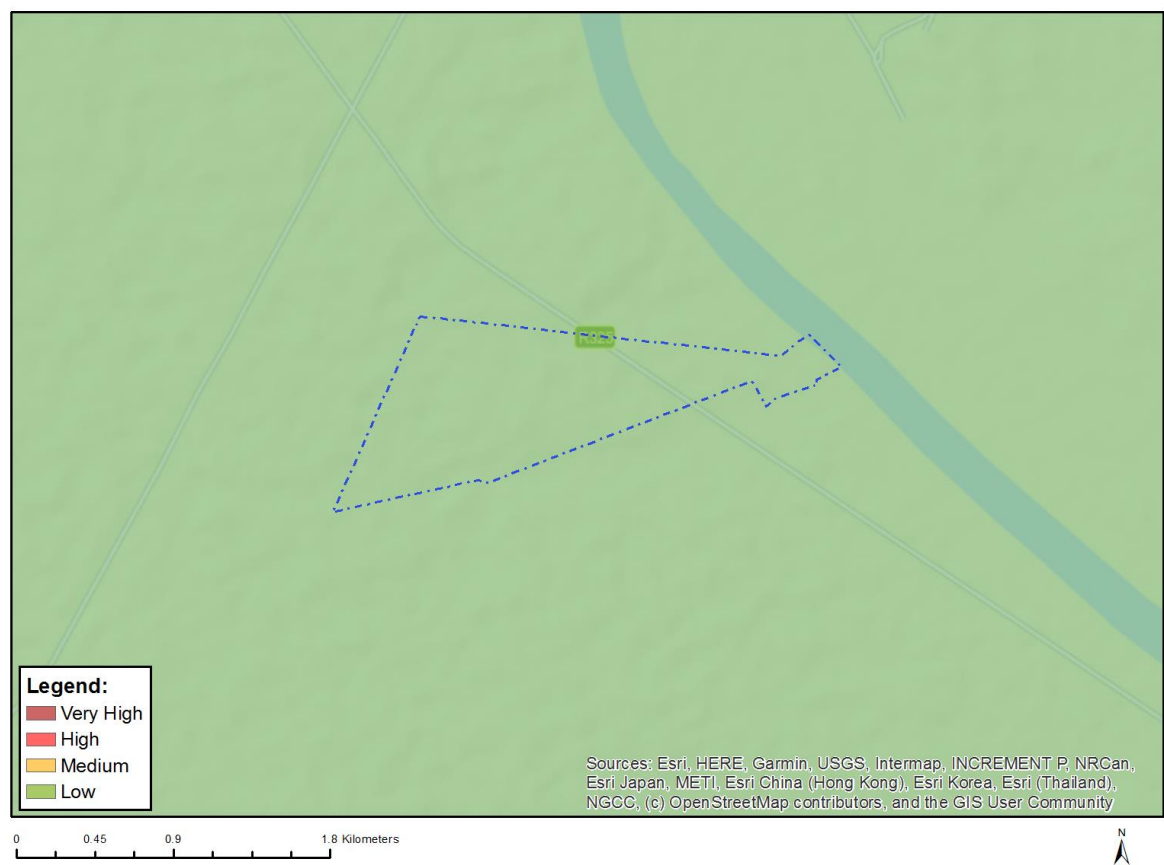


| Very High sensitivity | High sensitivity | Medium sensitivity | Low sensitivity |
|-----------------------|------------------|--------------------|-----------------|
| X | | | |

Sensitivity Features:

| Sensitivity | Feature(s) |
|-------------|--|
| Low | Low sensitivity |
| Very High | CBA 1: Aquatic |
| Very High | CBA 2: Aquatic (degraded) |
| Very High | Estuary_ Gouritz |
| Very High | FEPA Subcatchment |
| Very High | Rivers_ AB |
| Very High | Wetlands_ (Estuary) |
| Very High | Wetlands_ Albany Thicket (Valley-bottom) |

MAP OF RELATIVE ARCHAEOLOGICAL AND CULTURAL HERITAGE THEME SENSITIVITY

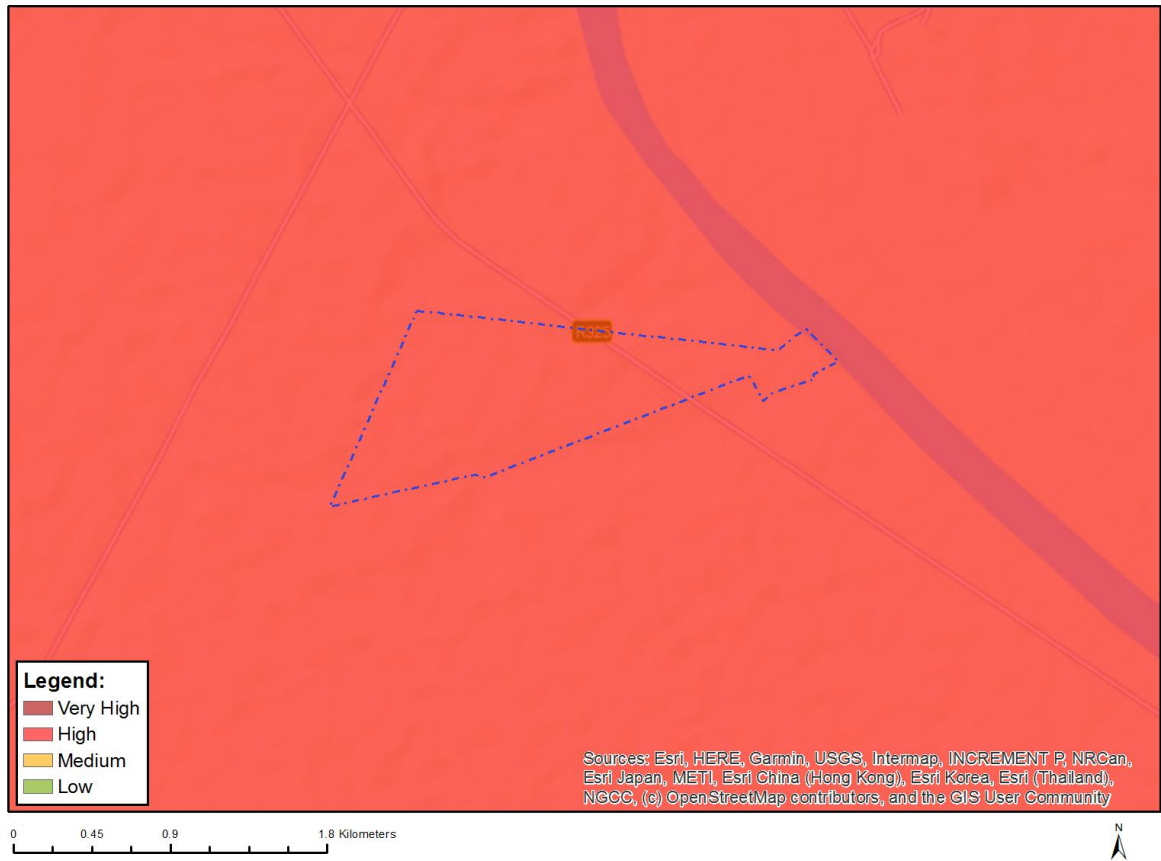


| Very High sensitivity | High sensitivity | Medium sensitivity | Low sensitivity |
|-----------------------|------------------|--------------------|-----------------|
| | | | X |

Sensitivity Features:

| Sensitivity | Feature(s) |
|-------------|-----------------|
| Low | Low sensitivity |

MAP OF RELATIVE CIVIL AVIATION THEME SENSITIVITY

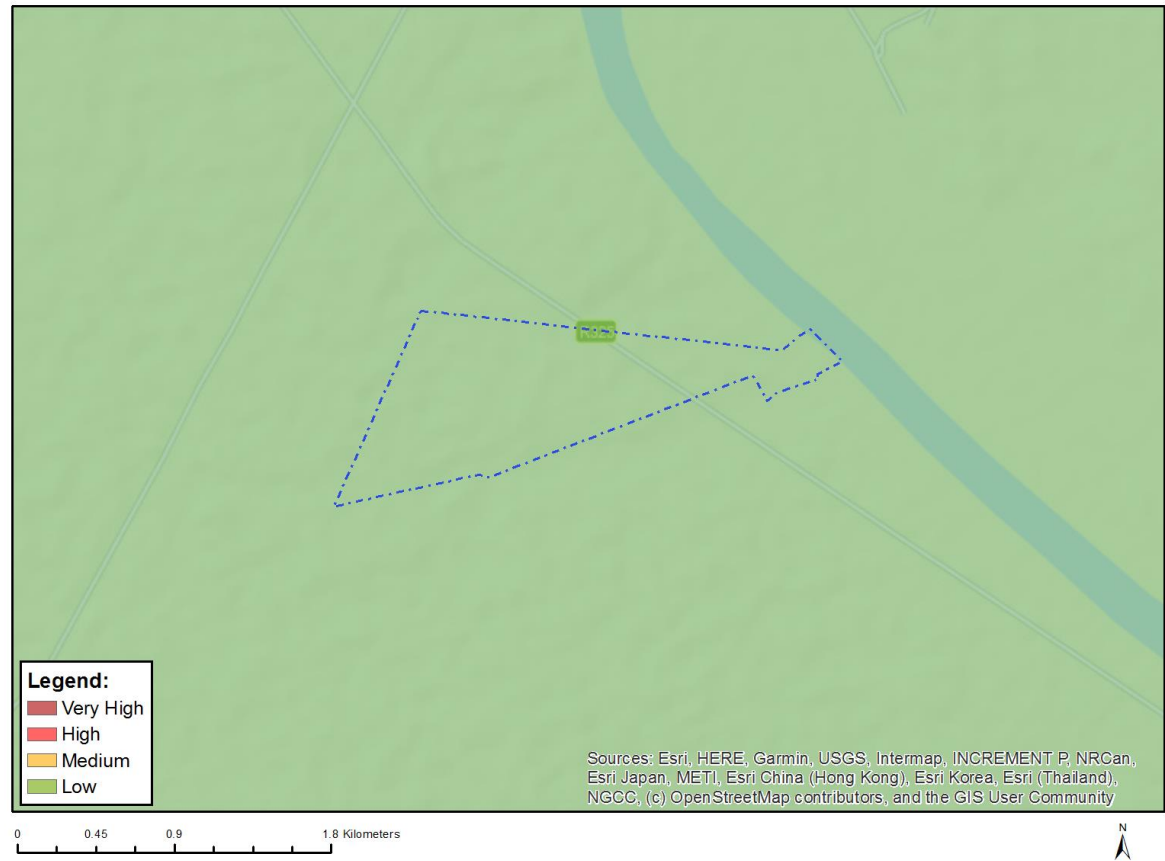


| Very High sensitivity | High sensitivity | Medium sensitivity | Low sensitivity |
|-----------------------|------------------|--------------------|-----------------|
| | X | | |

Sensitivity Features:

| Sensitivity | Feature(s) |
|-------------|---|
| High | Dangerous and restricted airspace as demarcated |

MAP OF RELATIVE DEFENCE THEME SENSITIVITY

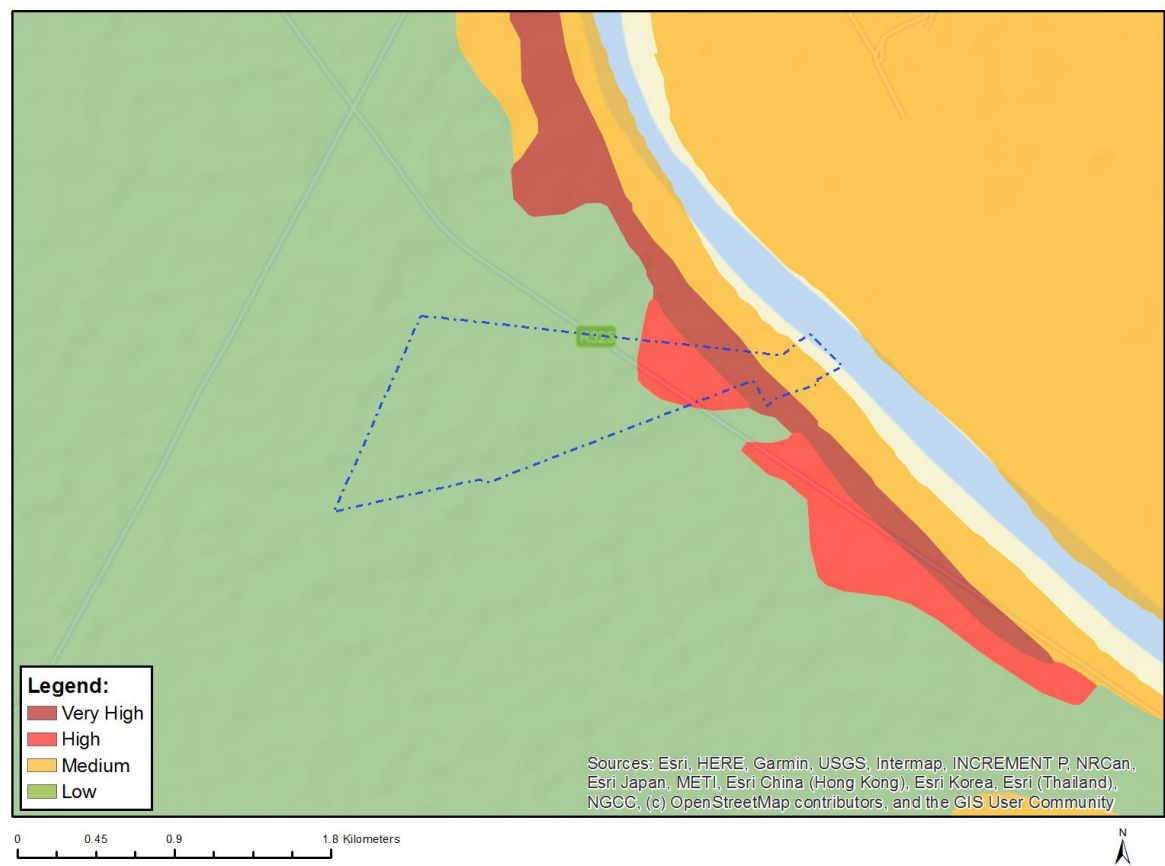


| Very High sensitivity | High sensitivity | Medium sensitivity | Low sensitivity |
|-----------------------|------------------|--------------------|-----------------|
| | | | X |

Sensitivity Features:

| Sensitivity | Feature(s) |
|-------------|-----------------|
| Low | Low Sensitivity |

MAP OF RELATIVE PALEONTOLOGY THEME SENSITIVITY

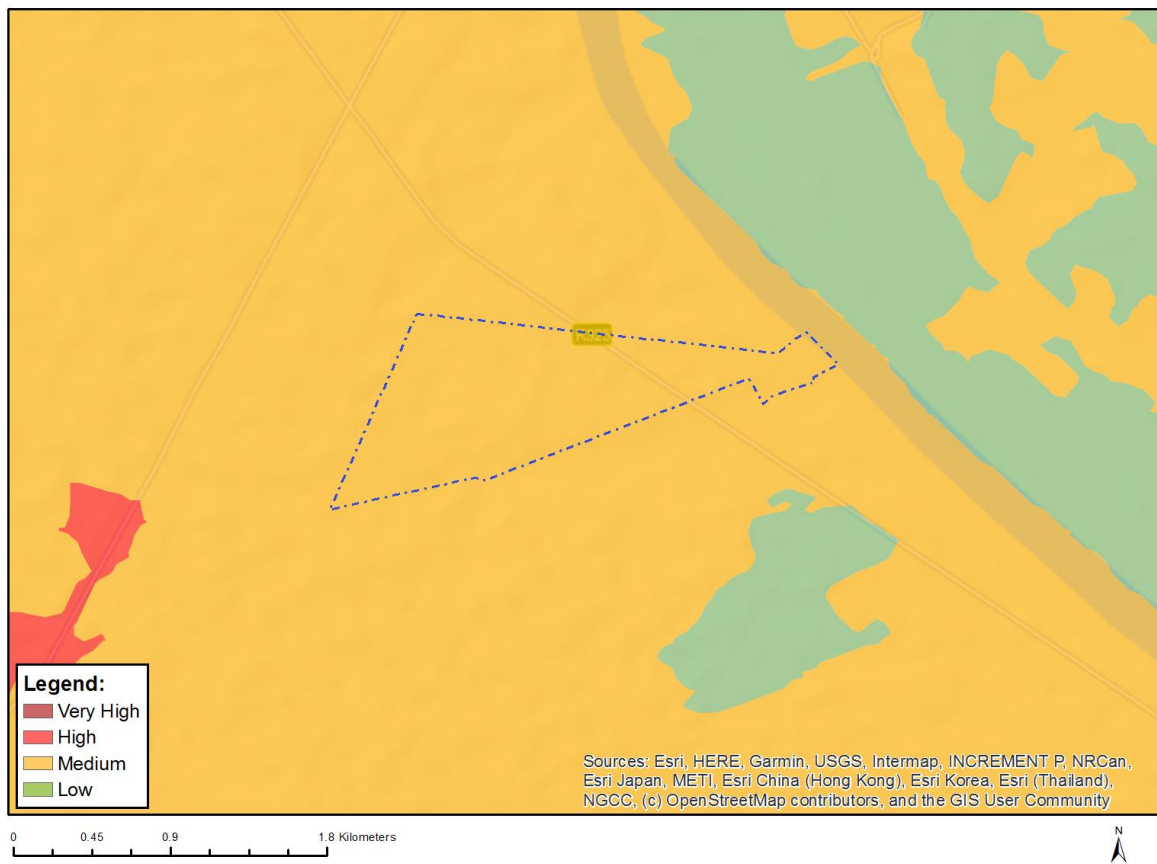


| Very High sensitivity | High sensitivity | Medium sensitivity | Low sensitivity |
|-----------------------|------------------|--------------------|-----------------|
| X | | | |

Sensitivity Features:

| Sensitivity | Feature(s) |
|-------------|---|
| High | Features with a High paleontological sensitivity |
| Low | Features with a Low paleontological sensitivity |
| Medium | Features with a Medium paleontological sensitivity |
| Very High | Features with a Very High paleontological sensitivity |

MAP OF RELATIVE PLANT SPECIES THEME SENSITIVITY



Where only a sensitive plant unique number or sensitive animal unique number is provided in the screening report and an assessment is required, the environmental assessment practitioner (EAP) or specialist is required to email SANBI at eiadatarequests@sanbi.org.za listing all sensitive species with their unique identifiers for which information is required. The name has been withheld as the species may be prone to illegal harvesting and must be protected. SANBI will release the actual species name after the details of the EAP or specialist have been documented.

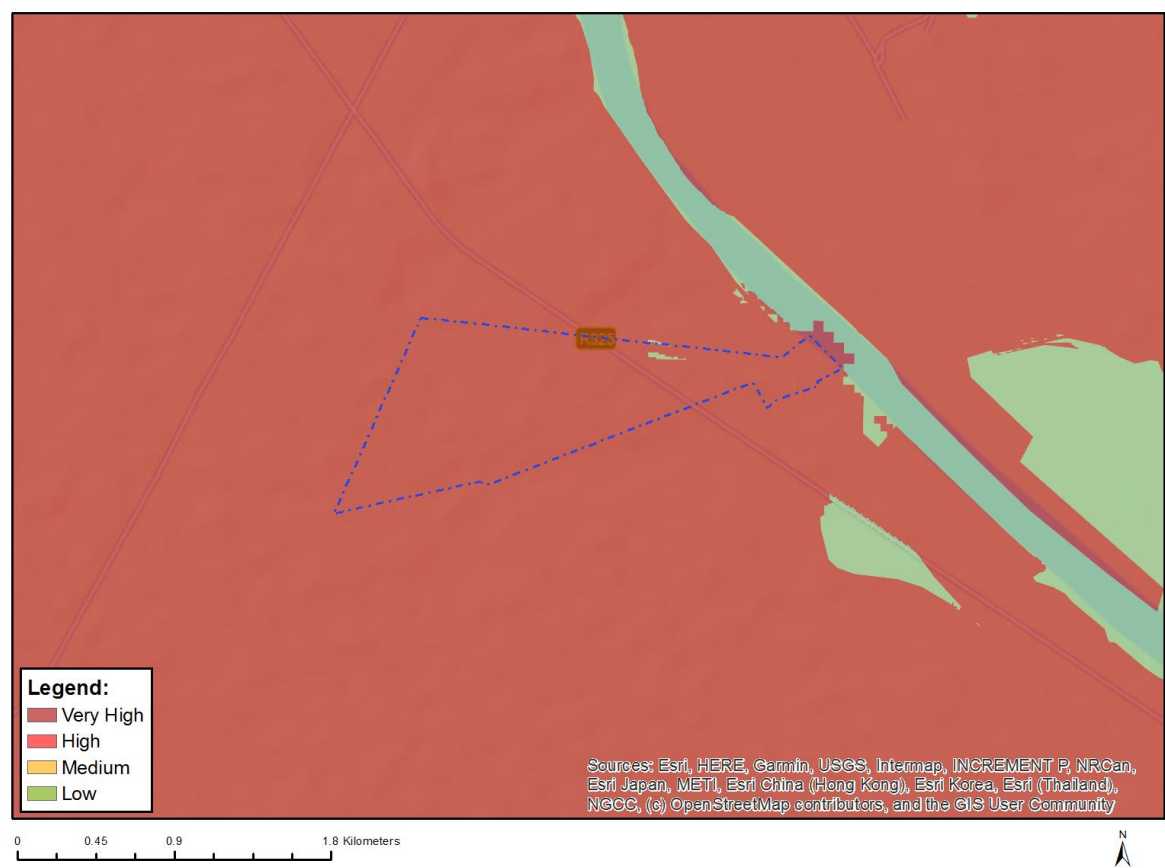
| Very High sensitivity | High sensitivity | Medium sensitivity | Low sensitivity |
|-----------------------|------------------|--------------------|-----------------|
| | | X | |

Sensitivity Features:

| Sensitivity | Feature(s) |
|-------------|-------------------------|
| Medium | Lampranthus ceriseus |
| Medium | Lampranthus diutinus |
| Medium | Lampranthus fergusoniae |
| Medium | Lampranthus foliosus |
| Medium | Lampranthus pauciflorus |
| Medium | Ruschia leptocalyx |
| Medium | Argyrobium harmsianum |
| Medium | Aspalathus acutiflora |
| Medium | Aspalathus arenaria |
| Medium | Aspalathus obtusifolia |
| Medium | Aspalathus odontoloba |
| Medium | Aspalathus quadrata |
| Medium | Lebeckia gracilis |

| | |
|--------|-------------------------------|
| Medium | Leucadendron galpinii |
| Medium | Leucadendron linifolium |
| Medium | Leucospermum praecox |
| Medium | Wahlenbergia polyantha |
| Medium | Selago glandulosa |
| Medium | Selago villicaulis |
| Medium | Erica baueri subsp. baueri |
| Medium | Erica viscosissima |
| Medium | Erica baueri subsp. gouriquae |
| Medium | Hermannia lavandulifolia |
| Medium | Sensitive species 153 |
| Medium | Sensitive species 268 |
| Medium | Thamnochortus muirii |
| Medium | Duvalia immaculata |
| Medium | Metalasia luteola |
| Medium | Cotula myriophylloides |
| Medium | Athanasia cochlearifolia |
| Medium | Diosma tenella |
| Medium | Agathosma eriantha |
| Medium | Agathosma muirii |
| Medium | Agathosma riversdalensis |
| Medium | Euchaetis albertiniana |
| Medium | Cliffortia longifolia |
| Medium | Polygala pubiflora |
| Medium | Drosanthemum lavisii |
| Medium | Sensitive species 800 |
| Medium | Sensitive species 500 |
| Medium | Sensitive species 654 |
| Medium | Zostera capensis |

MAP OF RELATIVE TERRESTRIAL BIODIVERSITY THEME SENSITIVITY



| Very High sensitivity | High sensitivity | Medium sensitivity | Low sensitivity |
|-----------------------|------------------|--------------------|-----------------|
| X | | | |

Sensitivity Features:

| Sensitivity | Feature(s) |
|-------------|--|
| Low | Low Sensitivity |
| Very High | ESA 2: Restore from other land use |
| Very High | ESA 2: Restore from plantation or high density IAP |
| Very High | CBA 2: Terrestrial |
| Very High | CBA 1: Terrestrial |
| Very High | FEPA Subcatchment |
| Very High | EN_Hartenbos Dune Thicket |
| Very High | EN_Cape Lowland Alluvial Vegetation |
| Very High | EN_Albertinia Sand Fynbos |