



# Cape EAPrac

Cape Environmental Assessment Practitioners (Pty) Ltd

Reg. No. 2008/004627/07  
VAT No 4720248386



Telephone: (044) 874 0365

Web: [www.cape-eaprac.co.za](http://www.cape-eaprac.co.za)

17 Progress Street, George  
PO Box 2070, George 6530

27 August 2024

Our Ref: HES838/07

DEA&DP Ref: 16/3/3/6/7/1/D5/8/0132/24

To Whom it May Concern

Potential Interested & Affected Party (I&AP)

VIA EMAIL

**PRE-APPLICATION PUBLIC PARTICIPATION PROCESS FOR DEVELOPMENT OF SIX GLAMPING PODS ON A PORTION OF THE REMAINDER OF PORTION 101 OF THE FARM ZWARTE JONGERSFONTEIN NO. 489, JONGENSFONTEIN, HESSEQUA MUNICIPAL DISTRICT**

Cape EAPrac has been appointed as independent environmental consultants responsible for facilitating the environmental investigation and formal **Basic Assessment** process for the proposed development of six glamping pods on a portion of RE/101/489 Farm Zwarte Jongersfontein, Hessequa Municipal District (Figure 1).

The property is approximately 61ha in size and located immediately adjacent to- and bordering the Eastern border of Jongensfontein, a small coastal town approximately 9km south-west of Still Bay via Main Road (Figure 1). The main access is proposed directly off Boegspriet Road at the intersection with Kompas Close.

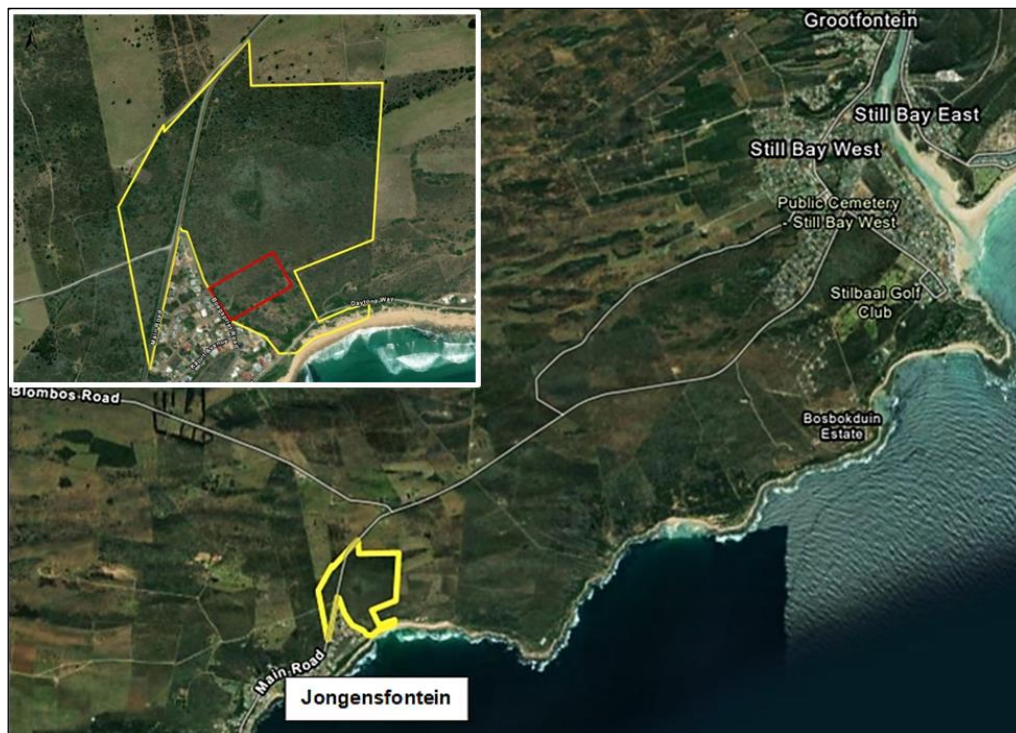


Figure 1: Location of the approximate study area for the proposed six (6) glamping pods (RED) on the greater property (YELLOW) in proximity to Jongensfontein to the West.

The proposal entails the following **development components** (Figure 2)(Figure 3):

- **Six (6)** x one-bedroom **Glamping Pods**,  $\pm 26\text{m}^2$  each, with its own:
  - Deck ( $\pm 34\text{m}^2$ )
  - Carport ( $\pm 18\text{m}^2$ )
  - Water Tank
  - Underground Sewage Package Plant
  - Limited Lawn Area
  - **Total Built and Parking Area:  $\pm 468\text{m}^2$**
  
- **Internal Access Roads**
  - Main Gravel Road
    - Area:  $\pm 848\text{m}^2$
    - Width:  $\pm 6\text{m}$
  - Internal Gravel Roads
    - Area:  $\pm 699\text{m}^2$
    - Width:  $\pm 3\text{m}$
  - **Amounting to  $\pm 1\ 547\text{m}^2$**
  
- **Water** for the proposed development will be obtained from an existing borehole situated on the property.
  
- **Sewage Package Plant:** Each pod will be provided with its own submerged Fluidco BioBloo sewage system with return activated sludge allowing treated water to be discharged back to the environment and re-used.
  
- **Electrical:** Each pod will also be equipped with roof mounted PV solar and battery systems.
  
- **Solid waste:** Provision will be made for a solid waste collection area at the access gate.

Listing Notice 1 (Activities 17 & 19A) and 3 (Activities 4 & 12) applies for which a Basic Assessment process is required.

Interested & Affected Parties (I&APs) and Potential I&APs are invited to **review and submit comment** on the Pre-Application Draft Basic Assessment Report.

The Pre-Application Draft Basic Assessment Report (Pre-App DBAR) is available for a **30-day** commenting period, extending from **Thursday, 29 August – Monday, 30 September 2024**.

The Pre-App DBAR can be accessed, from **Thursday, 29 August 2024**, via the Cape EAPrac website ([www.cape-eaprac.co.za](http://www.cape-eaprac.co.za) under 'Active Projects'). You are welcome to request electronic links, or alternatively we can send the reports via electronic platforms such as WeTransfer / OneDrive. Should you require a flashdrive with the complete report you can request such in writing.

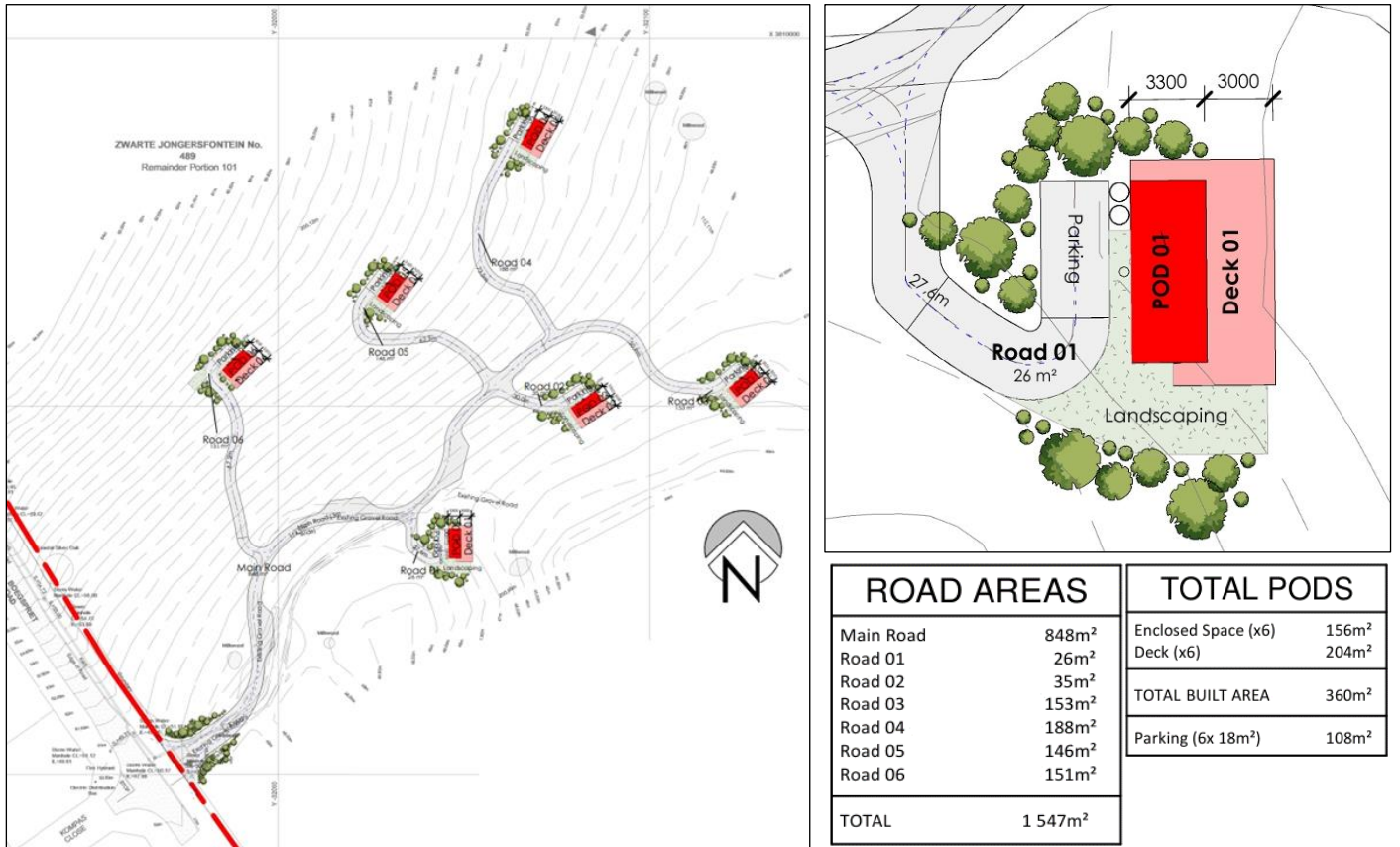


Figure 2: Site Development Plan for glamping pods within an approximate study area of 2.24ha as indicated in Figure 1 (RED).



Figure 3: Approximate overlay of the location of the six pods on the property.

Potential I&APs wanting to **register** must submit their full contact details and/or comments to *Cape EAPrac*, within the stipulated 30-day commenting period, to below address. Your motivation for, or interest in the outcome of the application, must be stipulated in your registration/submission. You are required to indicate your preferred method of communication as part of your registration/submission.

Parties registering with *Cape EAPrac*, or submitting formal comments, will be formally registered on the Stakeholder Register. ***Correspondence throughout the remainder of the environmental process will be distributed to registered I&APs only.***

Should you have any queries about the proposal or process you are most welcome to contact the undersigned directly.

Input from stakeholders is very important to help inform the process, as well as decision-making and we kindly do request that those with an interest or mandate, please do take the time to review the report and provide us with your comment so that we can consider and respond thereto as part of the process.

**To register as an I&AP or to submit comments on the Pre-App DBAR:**

*Cape EAPrac* Attention: Louise-Mari van Zyl / Mariska Byleveld

Email: [louise@cape-eaprac.co.za](mailto:louise@cape-eaprac.co.za) / [mariska@cape-eaprac.co.za](mailto:mariska@cape-eaprac.co.za)

Postal Address: PO Box 2070, George, 6530

Telephone: 044 874 0365