

**SCREENING REPORT FOR AN ENVIRONMENTAL AUTHORIZATION AS
REQUIRED BY THE 2014 EIA REGULATIONS – PROPOSED SITE
ENVIRONMENTAL SENSITIVITY**

EIA Reference number: HES838

Project name: Jongensfontein Glamping

Project title: Jongensfontein Glamping

Date screening report generated: 11/01/2024 12:06:01

Applicant: Mayborn Investments 20 (Pty) Ltd

Compiler: Cape EAPrac

Compiler signature:
.....

Application Category: Transformation of land | Indigenous vegetation

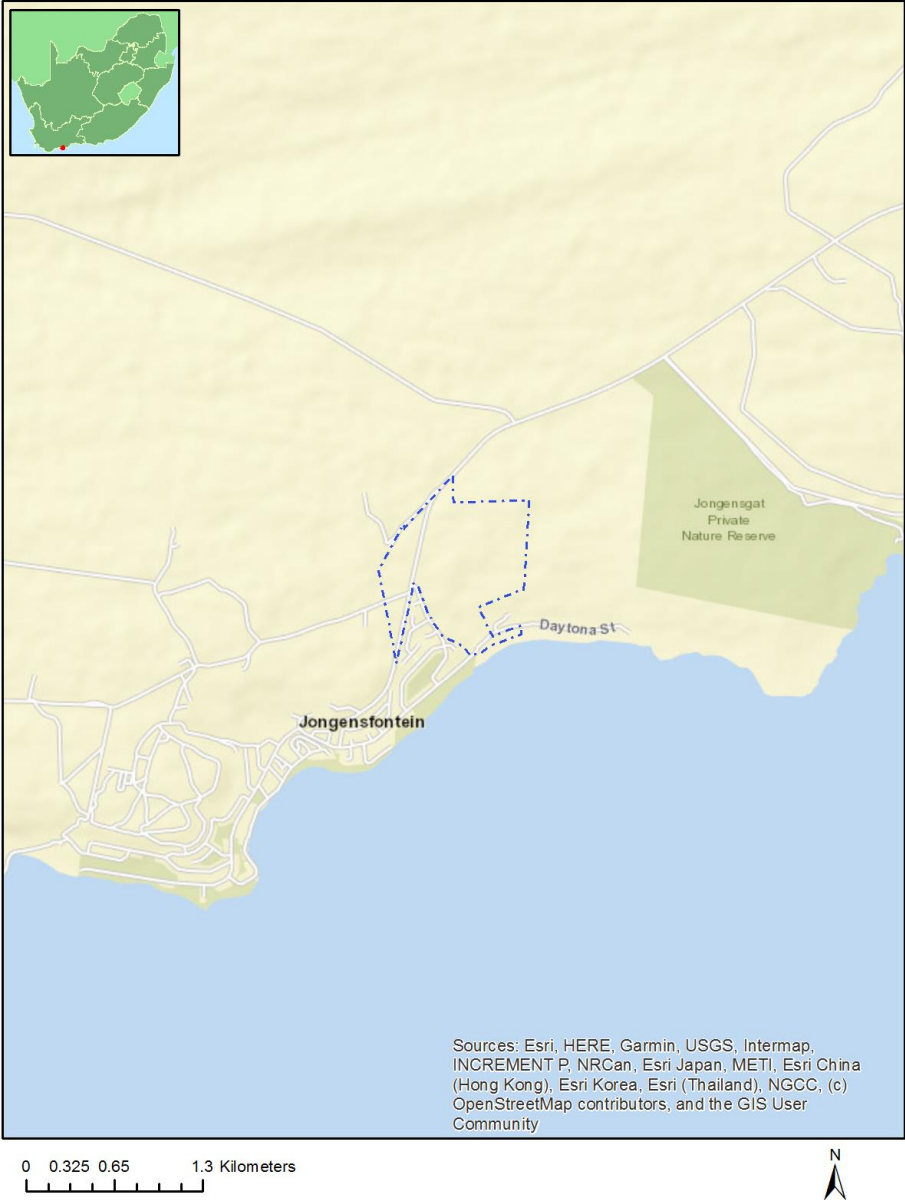
Table of Contents

- Proposed Project Location 3
 - Orientation map 1: General location 3
- Map of proposed site and relevant area(s) 4
 - Cadastral details of the proposed site 4
 - Wind and Solar developments with an approved Environmental Authorisation or applications under consideration within 30 km of the proposed area 4
 - Environmental Management Frameworks relevant to the application 5
- Environmental screening results and assessment outcomes 5
 - Relevant development incentives, restrictions, exclusions or prohibitions 5
 - Proposed Development Area Environmental Sensitivity 5
 - Specialist assessments identified 5
- Results of the environmental sensitivity of the proposed area 7
 - MAP OF RELATIVE AGRICULTURE THEME SENSITIVITY 7
 - MAP OF RELATIVE ANIMAL SPECIES THEME SENSITIVITY 8
 - MAP OF RELATIVE AQUATIC BIODIVERSITY THEME SENSITIVITY 9
 - MAP OF RELATIVE ARCHAEOLOGICAL AND CULTURAL HERITAGE THEME SENSITIVITY 10
 - MAP OF RELATIVE DEFENCE THEME SENSITIVITY 11
 - MAP OF RELATIVE PALEONTOLOGY THEME SENSITIVITY 12
 - MAP OF RELATIVE PLANT SPECIES THEME SENSITIVITY 13
 - MAP OF RELATIVE TERRESTRIAL BIODIVERSITY THEME SENSITIVITY 15

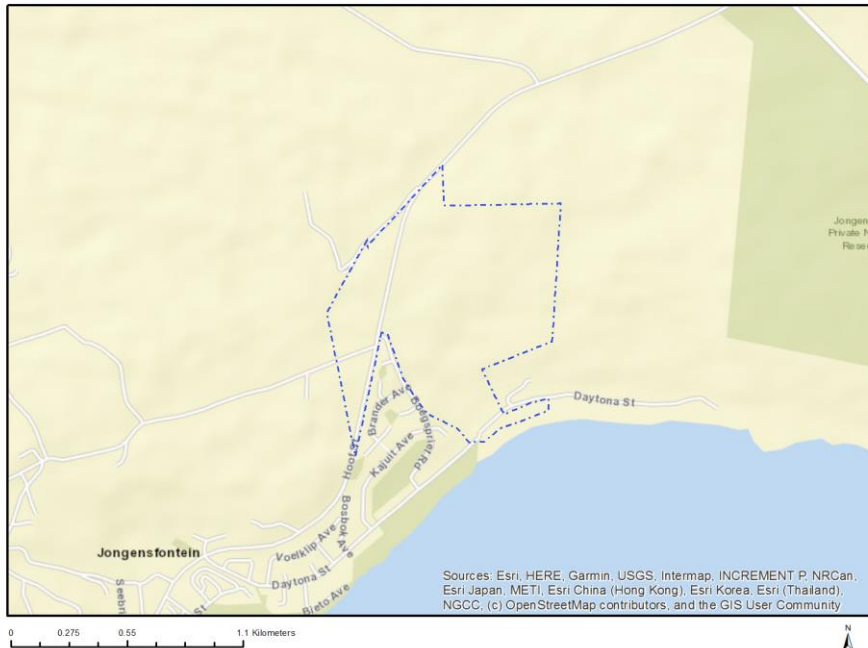
Proposed Project Location

Orientation map 1: General location

General Orientation: Jongensfontein Glamping



Map of proposed site and relevant area(s)



Cadastral details of the proposed site

Property details:

No	Farm Name	Farm/ Erf No	Portion	Latitude	Longitude	Property Type
1	ZWARTE JONGERS FONTEIN	489	0	34°24'28.65S	21°19'38.99E	Farm
2	ZWARTE JONGERS FONTEIN	489	101	34°24'55.98S	21°20'56.6E	Farm Portion

Development footprint¹ vertices:

No development footprint(s) specified.

Wind and Solar developments with an approved Environmental Authorisation or applications under consideration within 30 km of the proposed area

No	EIA Reference No	Classification	Status of application	Distance from proposed area (km)
1	14/12/16/3/3/1/657/A1	Wind	Approved	12.3
2	14/12/16/3/3/1/657	Wind	Approved	12.3

¹ "development footprint", means the area within the site on which the development will take place and includes all ancillary developments for example roads, power lines, boundary walls, paving etc. which require vegetation clearance or which will be disturbed and for which the application has been submitted.

Environmental Management Frameworks relevant to the application

No intersections with EMF areas found.

Environmental screening results and assessment outcomes

The following sections contain a summary of any development incentives, restrictions, exclusions or prohibitions that apply to the proposed development site as well as the most environmental sensitive features on the site based on the site sensitivity screening results for the application classification that was selected. The application classification selected for this report is:

Transformation of land | Indigenous vegetation.

Relevant development incentives, restrictions, exclusions or prohibitions

The following development incentives, restrictions, exclusions or prohibitions and their implications that apply to this site are indicated below.

Incentive, restriction or prohibition	Implication
South African Conservation Areas	https://screening.environment.gov.za/ScreeningDownloads/DevelopmentZones/SACAD_OR_2023_Q3_Metadata.pdf

Proposed Development Area Environmental Sensitivity

The following summary of the development site environmental sensitivities is identified. Only the highest environmental sensitivity is indicated. The footprint environmental sensitivities for the proposed development footprint as identified, are indicative only and must be verified on site by a suitably qualified person before the specialist assessments identified below can be confirmed.

Theme	Very High sensitivity	High sensitivity	Medium sensitivity	Low sensitivity
Agriculture Theme		X		
Animal Species Theme		X		
Aquatic Biodiversity Theme	X			
Archaeological and Cultural Heritage Theme				X
Defence Theme				X
Paleontology Theme			X	
Plant Species Theme			X	
Terrestrial Biodiversity Theme				

Specialist assessments identified

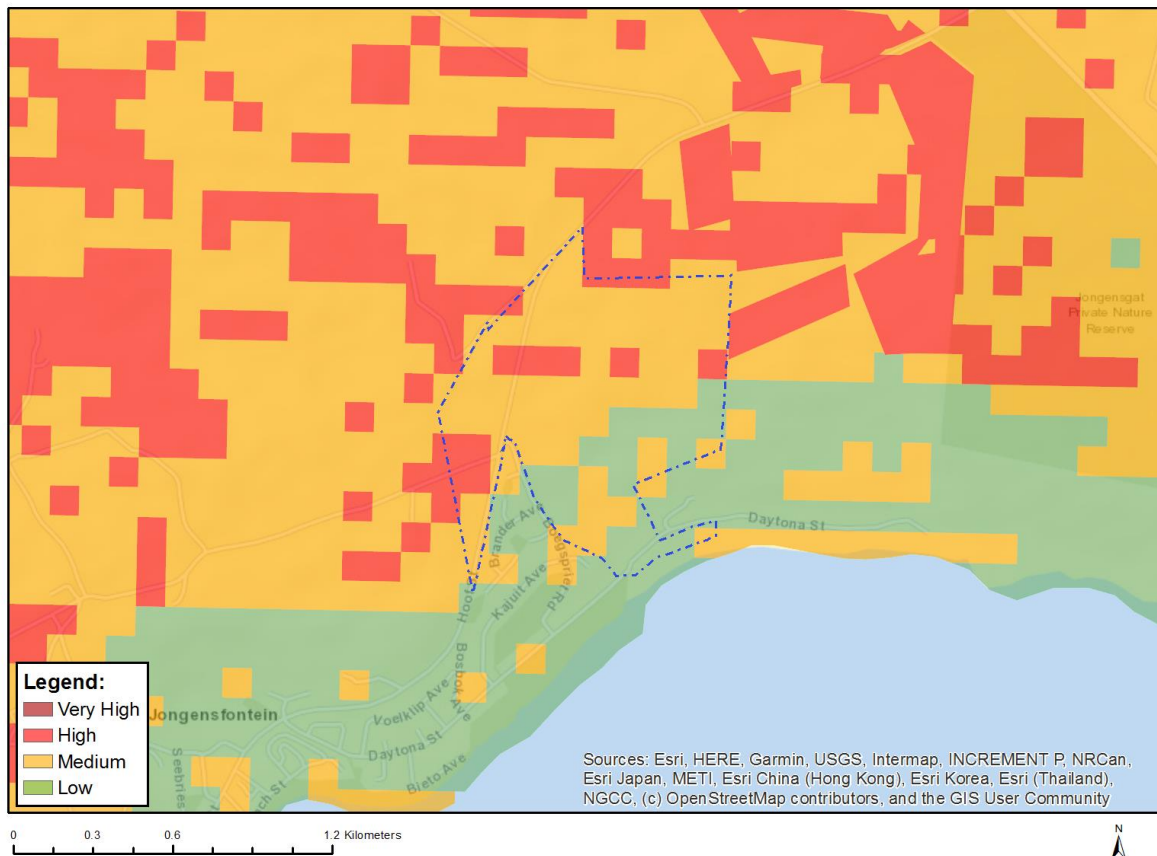
Based on the selected classification, and the known impacts associated with the proposed development, the following list of specialist assessments have been identified for inclusion in the assessment report. It is the responsibility of the EAP to confirm this list and to motivate in the assessment report, the reason for not including any of the identified specialist study including the provision of photographic evidence of the site situation.

No	Specialist assessment	Assessment Protocol
1	Landscape/Visual Impact Assessment	https://screening.environment.gov.za/ScreeningDownloads/AssessmentProtocols/Gazetted_General_Requirement_Assessment_Protocols.pdf
2	Archaeological and Cultural Heritage Impact Assessment	https://screening.environment.gov.za/ScreeningDownloads/AssessmentProtocols/Gazetted_General_Requirement_Assessment_Protocols.pdf
3	Palaeontology Impact Assessment	https://screening.environment.gov.za/ScreeningDownloads/AssessmentProtocols/Gazetted_General_Requirement_Assessment_Protocols.pdf
4	Terrestrial Biodiversity Impact Assessment	https://screening.environment.gov.za/ScreeningDownloads/AssessmentProtocols/Gazetted_Terrestrial_Biodiversity_Assessment_Protocols.pdf
5	Aquatic Biodiversity Impact Assessment	https://screening.environment.gov.za/ScreeningDownloads/AssessmentProtocols/Gazetted_Aquatic_Biodiversity_Assessment_Protocols.pdf
6	Socio-Economic Assessment	https://screening.environment.gov.za/ScreeningDownloads/AssessmentProtocols/Gazetted_General_Requirement_Assessment_Protocols.pdf
7	Plant Species Assessment	https://screening.environment.gov.za/ScreeningDownloads/AssessmentProtocols/Gazetted_Plant_Species_Assessment_Protocols.pdf
8	Animal Species Assessment	https://screening.environment.gov.za/ScreeningDownloads/AssessmentProtocols/Gazetted_Animal_Species_Assessment_Protocols.pdf

Results of the environmental sensitivity of the proposed area.

The following section represents the results of the screening for environmental sensitivity of the proposed site for relevant environmental themes associated with the project classification. It is the duty of the EAP to ensure that the environmental themes provided by the screening tool are comprehensive and complete for the project. Refer to the disclaimer.

MAP OF RELATIVE AGRICULTURE THEME SENSITIVITY

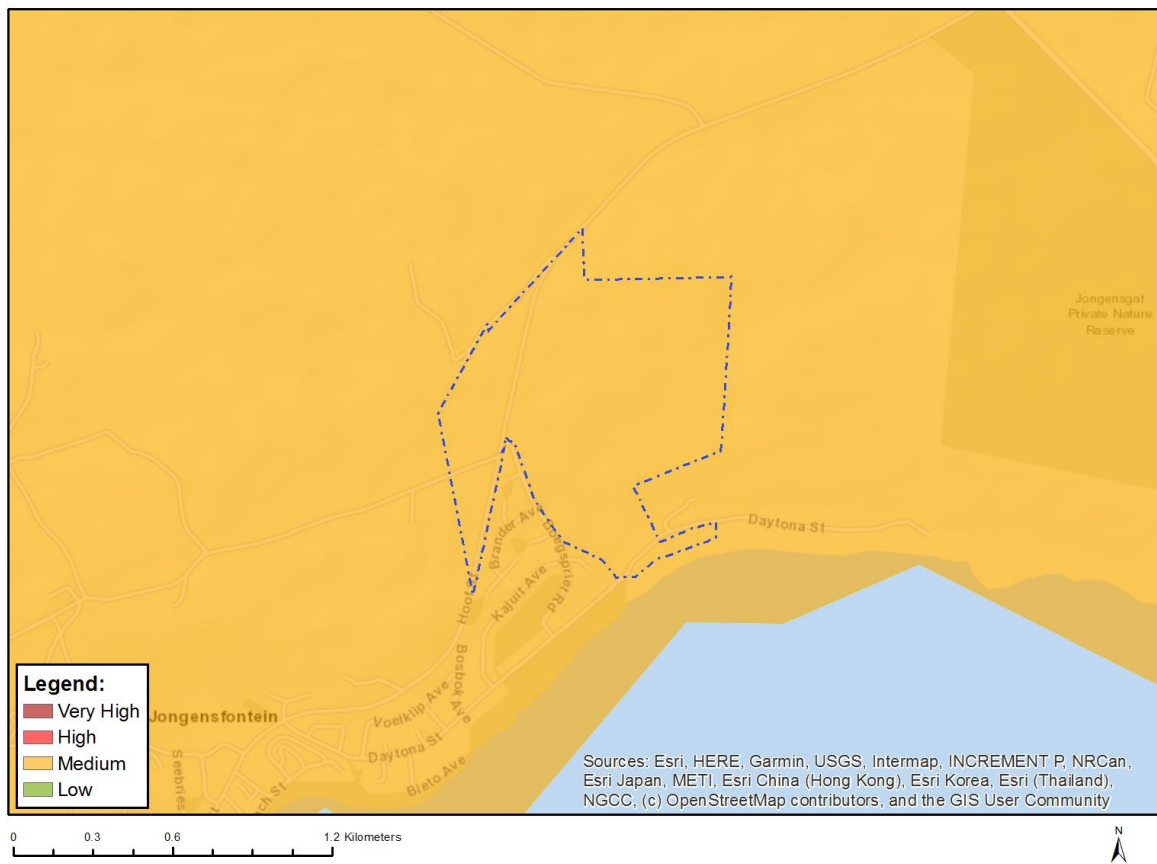


Very High sensitivity	High sensitivity	Medium sensitivity	Low sensitivity
	X		

Sensitivity Features:

Sensitivity	Feature(s)
High	Land capability;09. Moderate-High/10. Moderate-High
Low	Land capability;01. Very low/02. Very low/03. Low-Very low/04. Low-Very low/05. Low
Medium	Land capability;06. Low-Moderate/07. Low-Moderate/08. Moderate

MAP OF RELATIVE ANIMAL SPECIES THEME SENSITIVITY



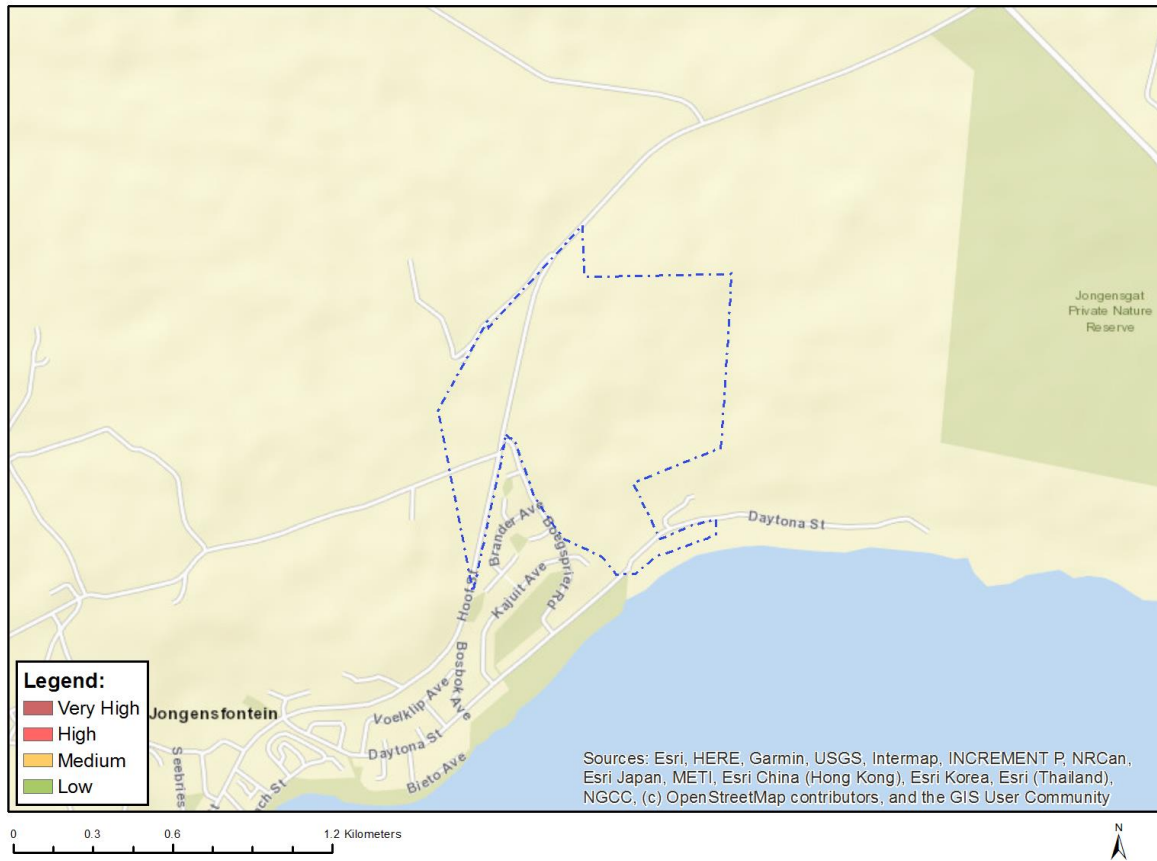
Where only a sensitive plant unique number or sensitive animal unique number is provided in the screening report and an assessment is required, the environmental assessment practitioner (EAP) or specialist is required to email SANBI at eiadatarequests@sanbi.org.za listing all sensitive species with their unique identifiers for which information is required. The name has been withheld as the species may be prone to illegal harvesting and must be protected. SANBI will release the actual species name after the details of the EAP or specialist have been documented.

Very High sensitivity	High sensitivity	Medium sensitivity	Low sensitivity
	X		

Sensitivity Features:

Sensitivity	Feature(s)
High	Aves-Circus maurus
High	Aves-Neotis denhami
High	Aves-Bradypterus sylvaticus
High	Aves-Polemaetus bellicosus
High	Aves-Afrotis afra
Medium	Aves-Circus maurus
Medium	Aves-Neotis denhami
Medium	Aves-Afrotis afra
Medium	Insecta-Aloeides thyra orientis
Medium	Insecta-Chrysoritis brooksi tearei
Medium	Insecta-Lepidochrysops littoralis
Medium	Invertebrate-Aneuryphymus montanus

MAP OF RELATIVE AQUATIC BIODIVERSITY THEME SENSITIVITY

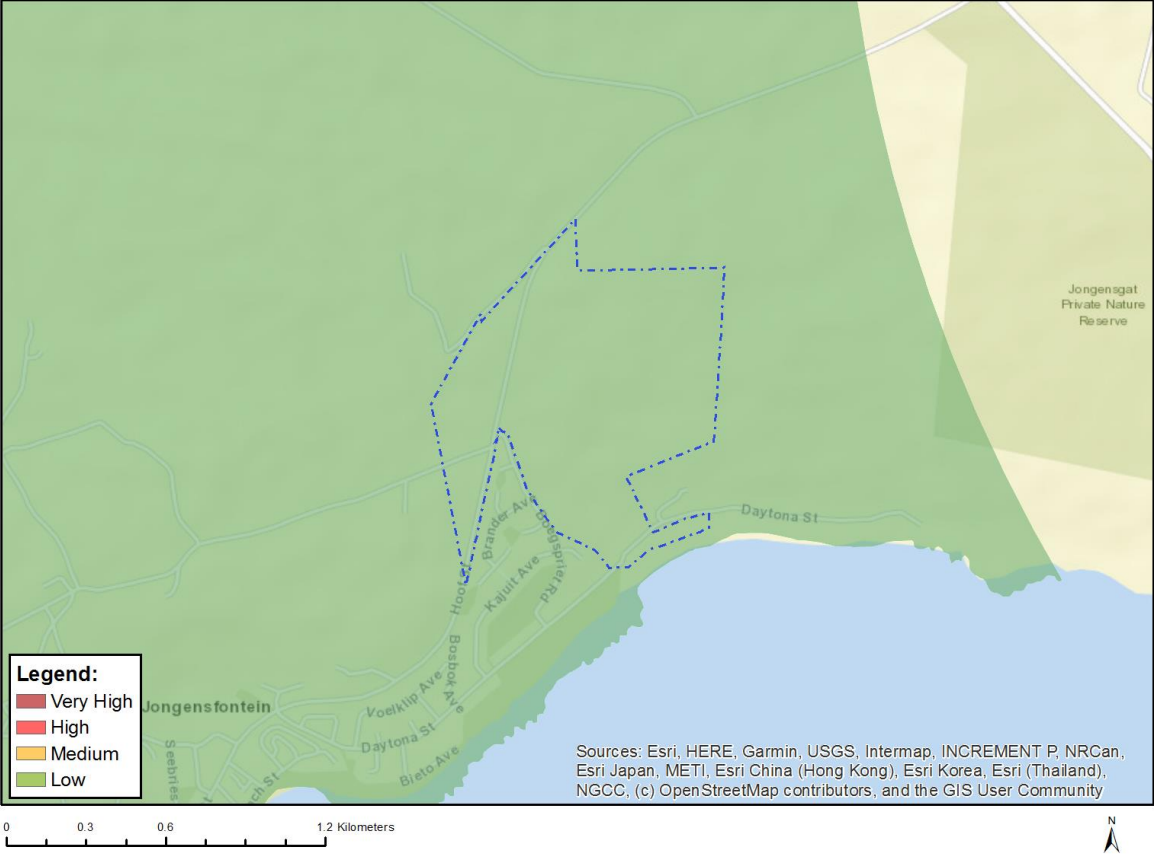


Very High sensitivity	High sensitivity	Medium sensitivity	Low sensitivity
X			

Sensitivity Features:

Sensitivity	Feature(s)
Low	Low sensitivity
Very High	CBA 1: Aquatic
Very High	ESA 1: Aquatic
Very High	Wetlands_Albany Thicket (Seep)

MAP OF RELATIVE ARCHAEOLOGICAL AND CULTURAL HERITAGE THEME SENSITIVITY

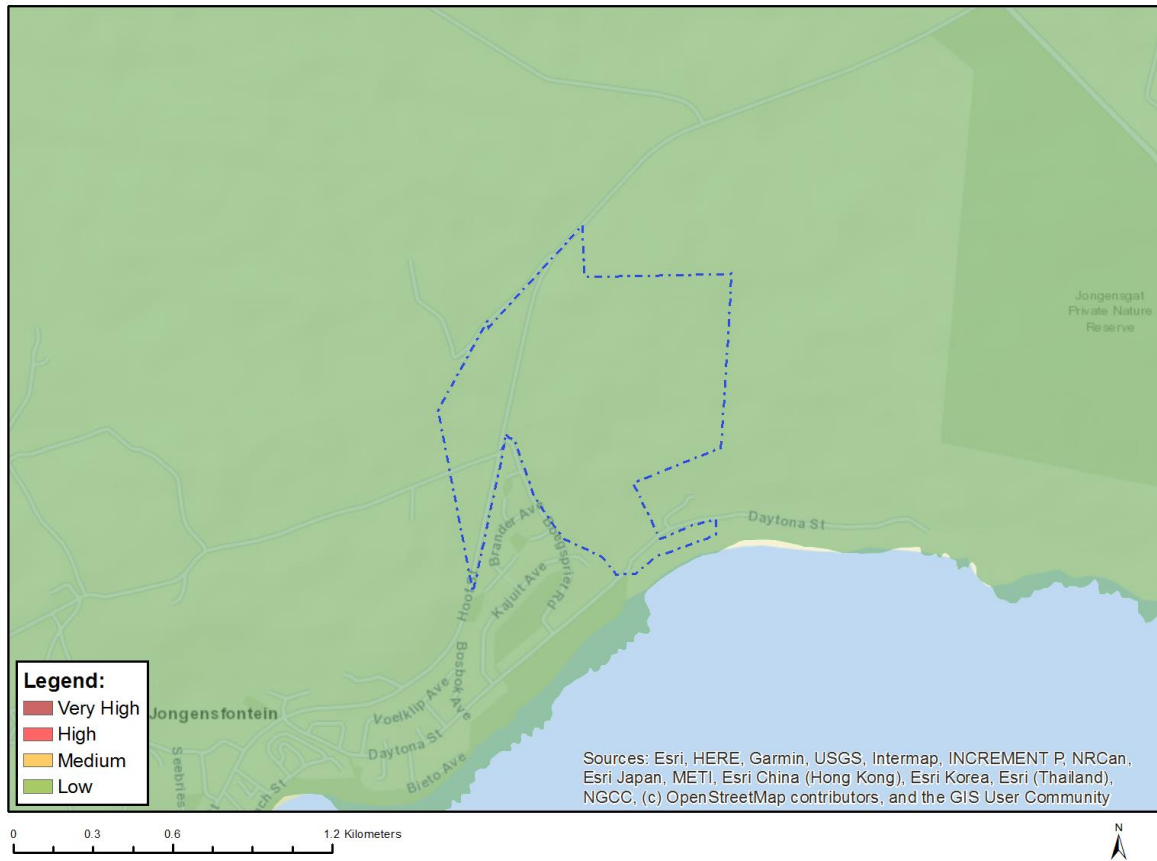


Very High sensitivity	High sensitivity	Medium sensitivity	Low sensitivity
			X

Sensitivity Features:

Sensitivity	Feature(s)
Low	Low sensitivity

MAP OF RELATIVE DEFENCE THEME SENSITIVITY

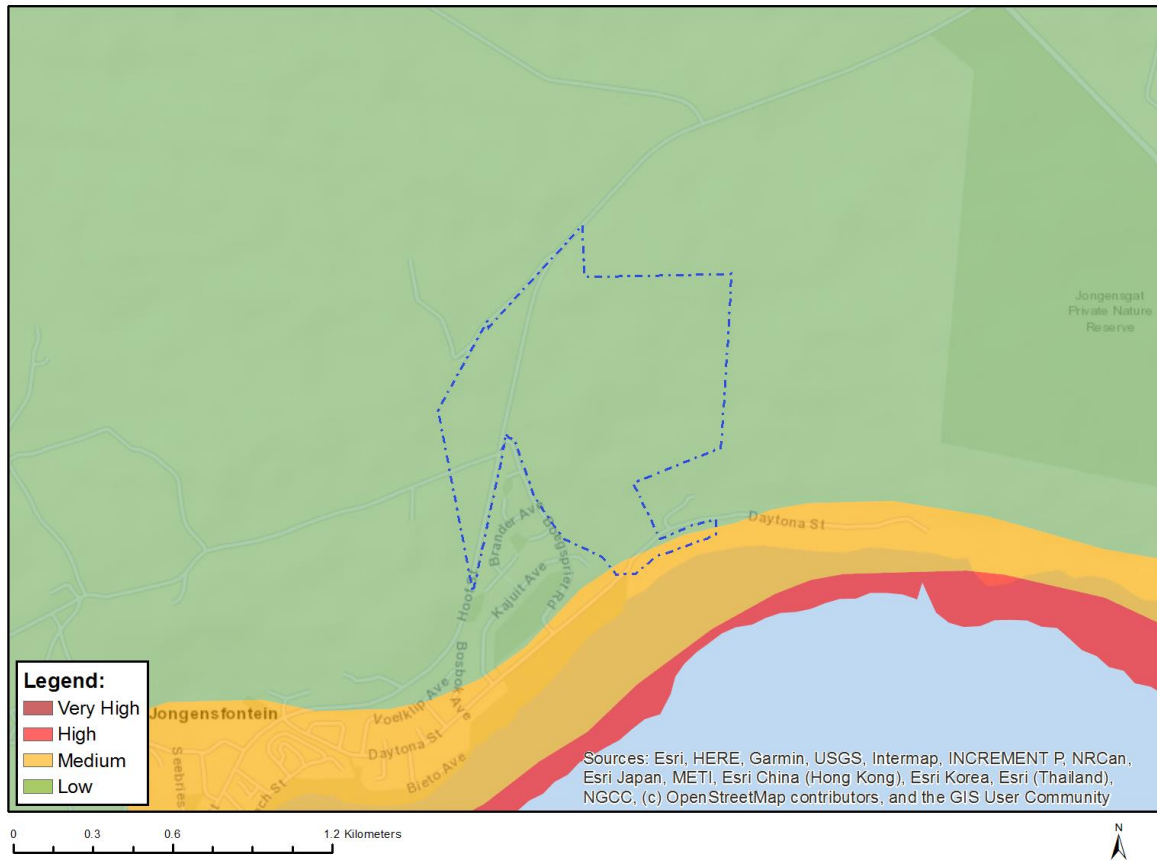


Very High sensitivity	High sensitivity	Medium sensitivity	Low sensitivity
			X

Sensitivity Features:

Sensitivity	Feature(s)
Low	Low Sensitivity

MAP OF RELATIVE PALEONTOLOGY THEME SENSITIVITY

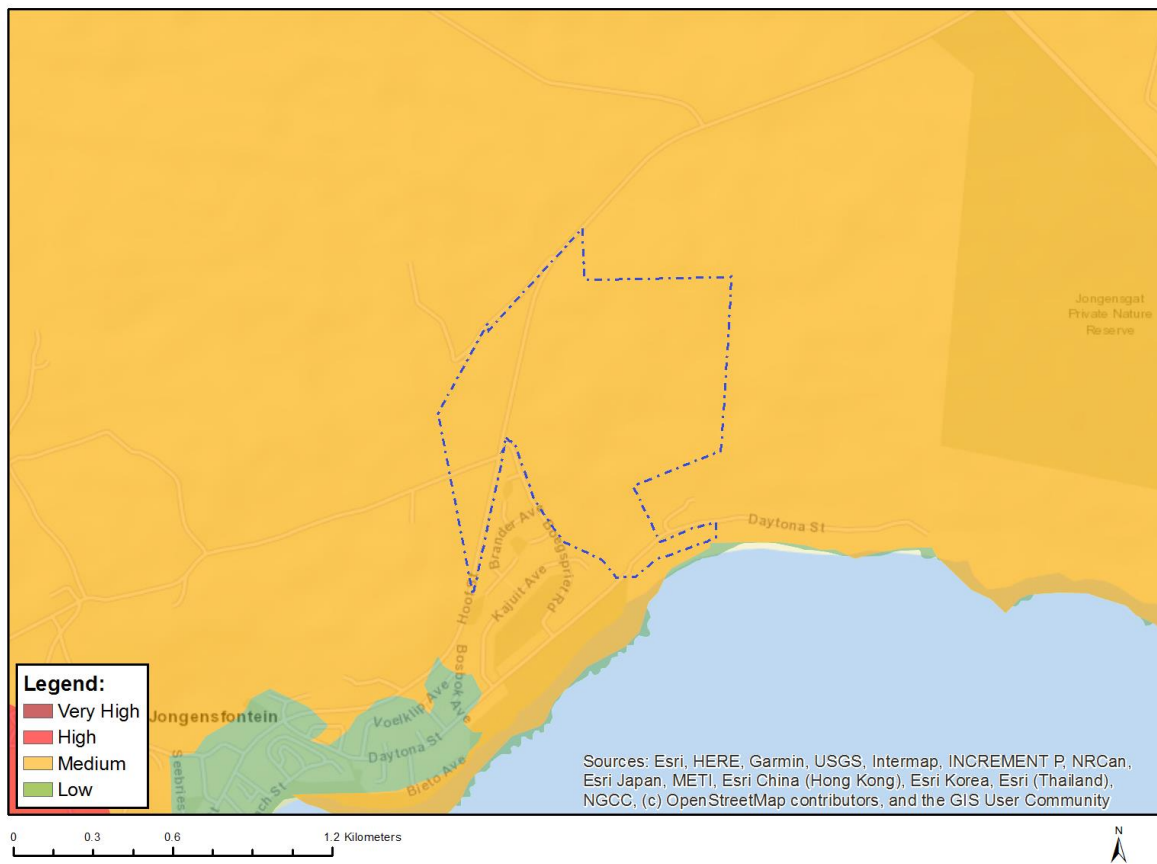


Very High sensitivity	High sensitivity	Medium sensitivity	Low sensitivity
		X	

Sensitivity Features:

Sensitivity	Feature(s)
Low	Features with a Low paleontological sensitivity
Medium	Features with a Medium paleontological sensitivity

MAP OF RELATIVE PLANT SPECIES THEME SENSITIVITY



Where only a sensitive plant unique number or sensitive animal unique number is provided in the screening report and an assessment is required, the environmental assessment practitioner (EAP) or specialist is required to email SANBI at eiadatarequests@sanbi.org.za listing all sensitive species with their unique identifiers for which information is required. The name has been withheld as the species may be prone to illegal harvesting and must be protected. SANBI will release the actual species name after the details of the EAP or specialist have been documented.

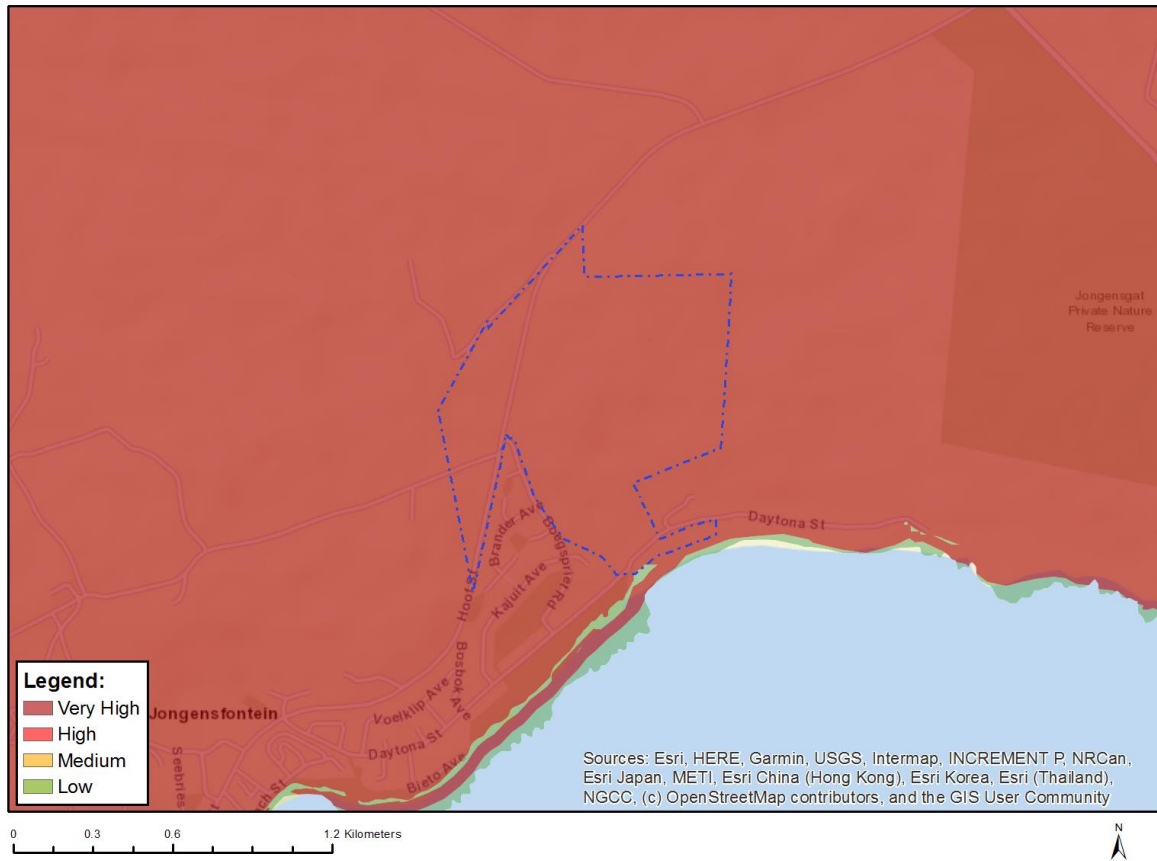
Very High sensitivity	High sensitivity	Medium sensitivity	Low sensitivity
		X	

Sensitivity Features:

Sensitivity	Feature(s)
Medium	Lampranthus ceriseus
Medium	Lampranthus fergusoniae
Medium	Lampranthus foliosus
Medium	Lampranthus pauciflorus
Medium	Ruschia leptocalyx
Medium	Argyrobium harmsianum
Medium	Psoralea sp. nov. (Muir 1850 PRE)
Medium	Aspalathus acutiflora
Medium	Aspalathus arenaria
Medium	Aspalathus calcarea
Medium	Aspalathus dasyantha
Medium	Aspalathus odontoloba
Medium	Aspalathus prostrata

Medium	<i>Aspalathus sanguinea</i> subsp. <i>foliosa</i>
Medium	<i>Otholobium</i> sp. nov. (Esterhuysen 33240a BOL)
Medium	<i>Lebeckia gracilis</i>
Medium	<i>Leucadendron galpinii</i>
Medium	<i>Leucospermum praecox</i>
Medium	<i>Wahlenbergia polyantha</i>
Medium	<i>Selago diffusa</i>
Medium	<i>Selago glandulosa</i>
Medium	<i>Selago villicaulis</i>
Medium	<i>Pentameris calcicola</i> var. <i>hirsuta</i>
Medium	Sensitive species 340
Medium	<i>Lobelia valida</i>
Medium	<i>Erica baueri</i> subsp. <i>baueri</i>
Medium	<i>Erica viscosissima</i>
Medium	<i>Erica calcicola</i>
Medium	<i>Hermannia lavandulifolia</i>
Medium	<i>Hermannia muirii</i>
Medium	<i>Thamnochortus muirii</i>
Medium	<i>Thamnochortus pluristachyus</i>
Medium	<i>Duvalia immaculata</i>
Medium	<i>Heliophila linearis</i> var. <i>reticulata</i>
Medium	<i>Metalasia luteola</i>
Medium	Sensitive species 784
Medium	Sensitive species 764
Medium	<i>Felicia ebracteata</i>
Medium	<i>Oedera steyniae</i>
Medium	<i>Athanasia quinquedentata</i> subsp. <i>rigens</i>
Medium	<i>Chrysocoma strigosa</i>
Medium	<i>Stoebe muirii</i>
Medium	<i>Diosma tenella</i>
Medium	<i>Agathosma eriantha</i>
Medium	<i>Agathosma minuta</i>
Medium	<i>Agathosma muirii</i>
Medium	<i>Agathosma riversdalensis</i>
Medium	<i>Agathosma robusta</i>
Medium	<i>Euchaetis albertiniana</i>
Medium	<i>Cliffortia longifolia</i>
Medium	<i>Muraltia barkerae</i>
Medium	<i>Polygala pubiflora</i>
Medium	Sensitive species 5
Medium	<i>Phylica incurvata</i>
Medium	<i>Drosanthemum lavisii</i>
Medium	Sensitive species 800
Medium	Sensitive species 335
Medium	Sensitive species 500
Medium	Sensitive species 654
Medium	<i>Agathosma microcarpa</i>

MAP OF RELATIVE TERRESTRIAL BIODIVERSITY THEME SENSITIVITY



Very High sensitivity	High sensitivity	Medium sensitivity	Low sensitivity

Sensitivity Features:

Sensitivity	Feature(s)
	ESA 2: Restore from other land use
	ESA 1
	CBA 2: Terrestrial
	CBA 1: Terrestrial
	EN_Hartenbos Dune Thicket
	Low Sensitivity