

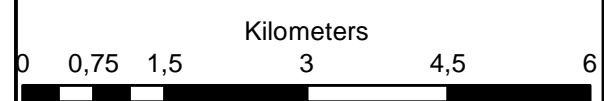
**Hotazel Solar
Amendment Application
Remaining Extent of Farm York
A 279**

Legend

- Remaining Extent of 279
- Remaining Extent of 280
- Portion 11 of 279
- Railway Line
- Arterial Route
- Main Road
- Non-Perennial Watercourse

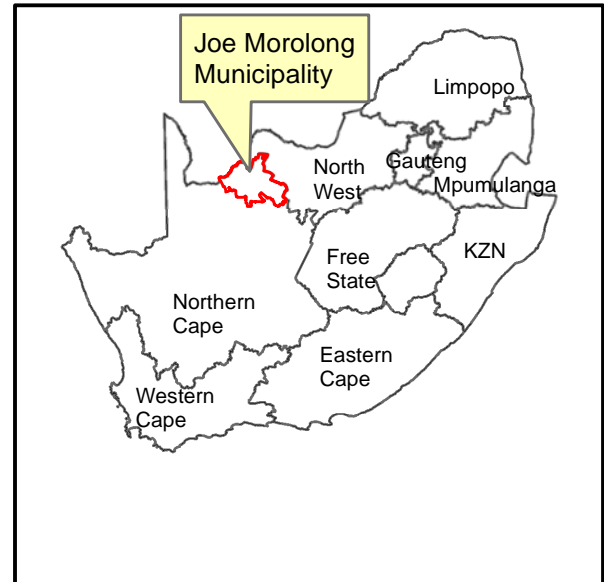
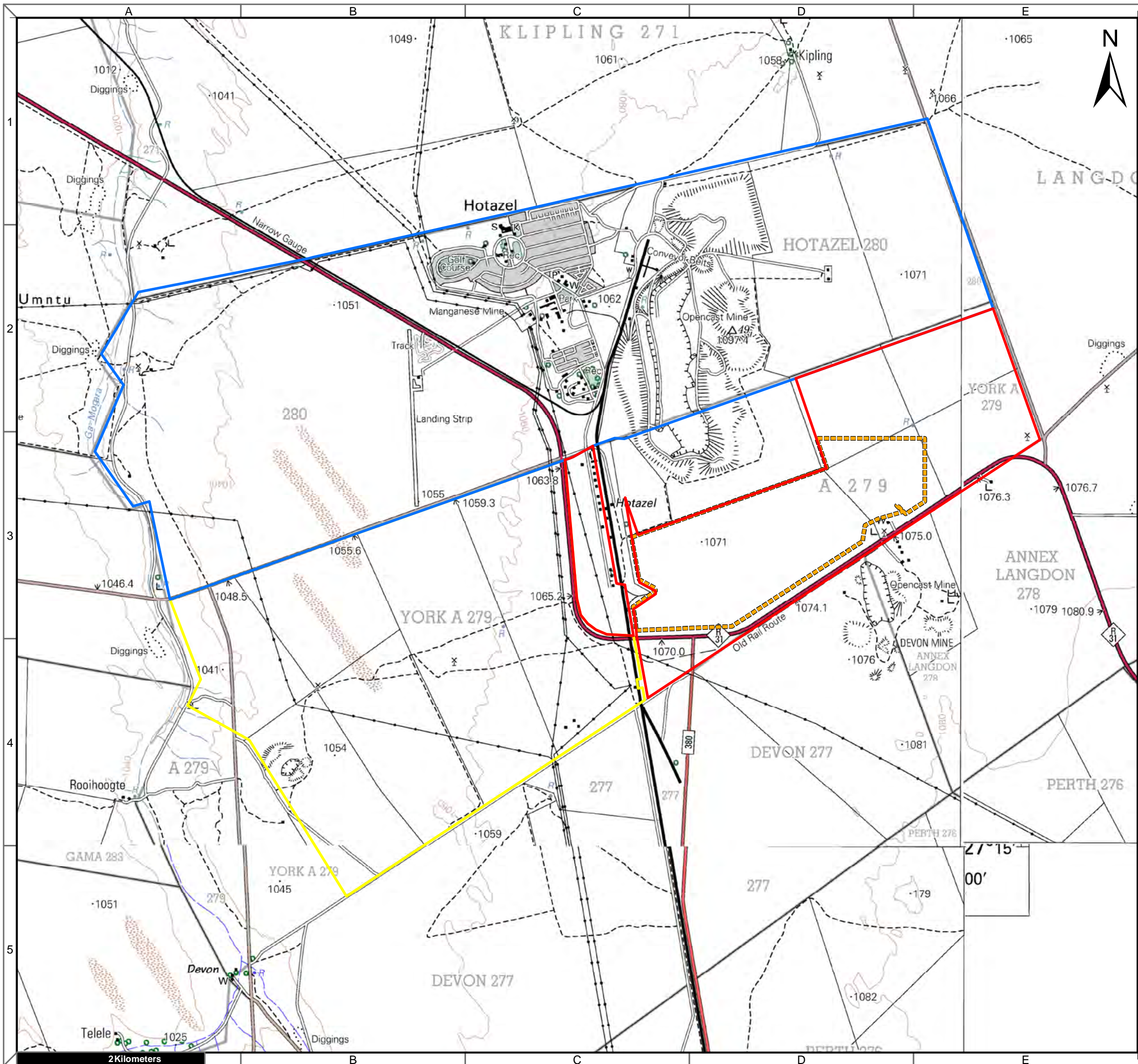
Notes

- Map Scale is 1: 80 000 when printed on A3
- Aerial image courtesy of Google Earth Pro 2018
- Imagery date May 2015
- Wind data courtesy of Metar 2017
- Nearest Metar station is Upington (FAUP) approx. 210kms south west



Map Drawn By:	Date	Reference
Melissa Mackay	2020/04/23	JMO543A

Cape Environmental Assessment Practitioners (Pty) Ltd
 Telephone: +27 44 874 0365
 Facsimile: +27 44 874 0432
 Web: www.cape-eaprac.co.za
 17 Progress St
 PO Box 2070
 George 6530



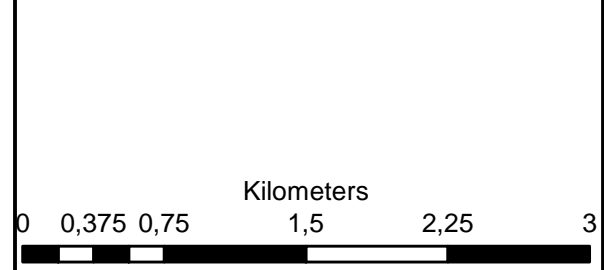
Hotazel Solar Amendment Application Remaining Extent of Farm York A 279

Legend

- Remaining Extent of 279
- Remaining Extent of 280
- Portion 11 of 279
- Hotazel Amendment Area

Notes

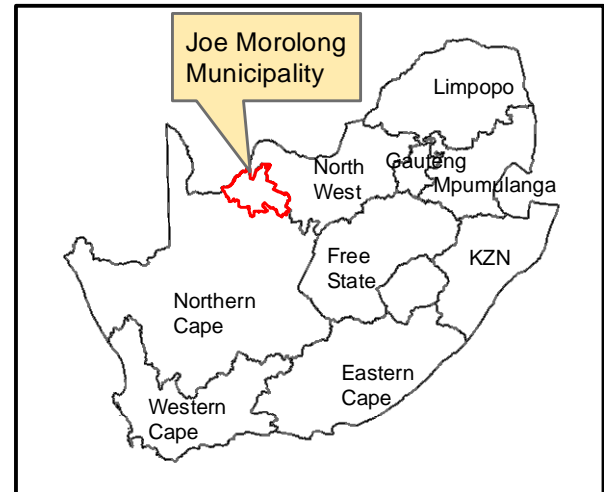
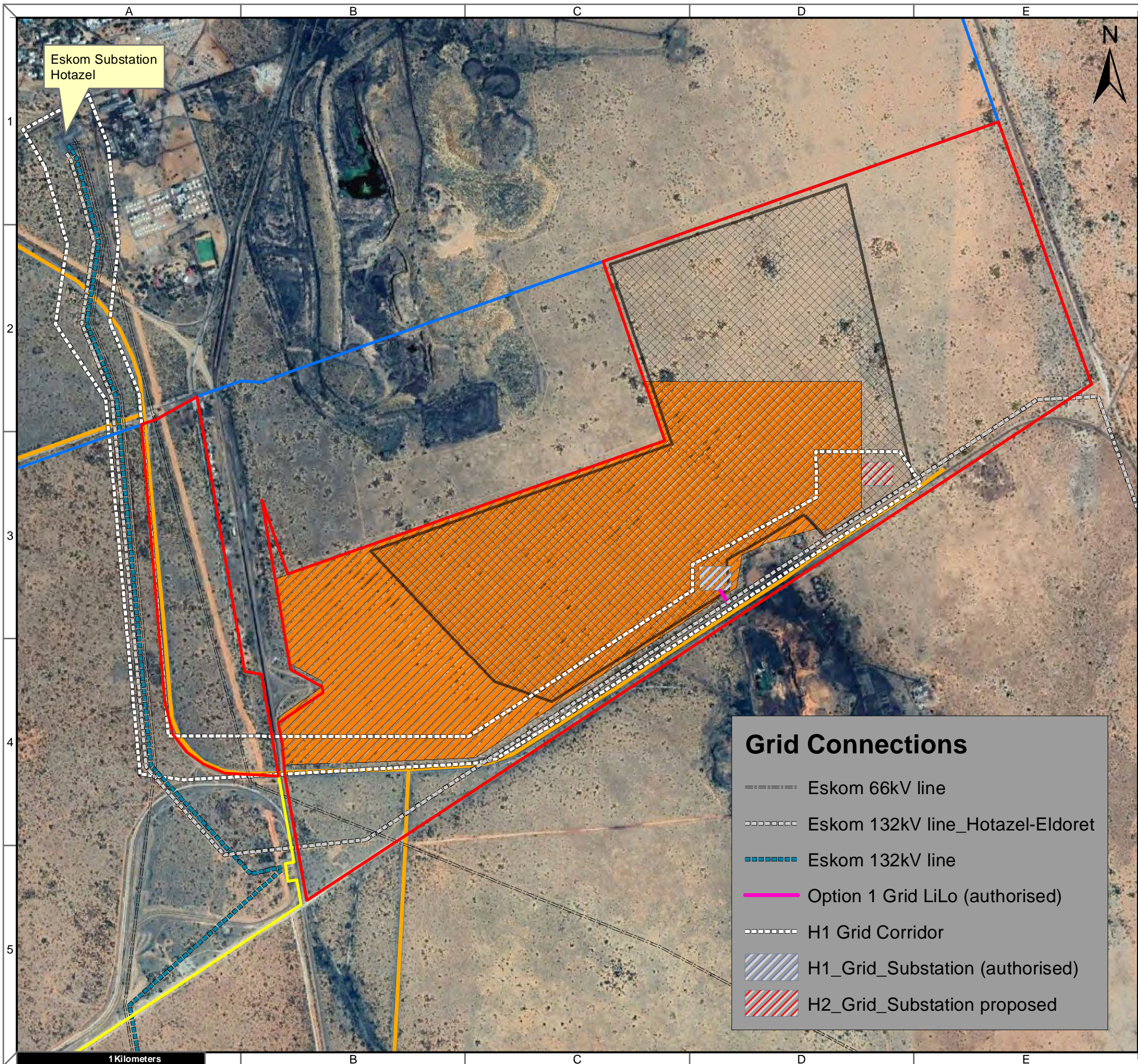
- Map Scale is 1: 40 000 when printed on A3
- Topographical data courtesy of Surveyor General
- Imagery date 2010 and 2013



Map Drawn By:	Date	Reference
Melissa Mackay	2020/04/23	JMO637

Cape Environmental Assessment Practitioners (Pty) Ltd
 Telephone: +27 44 874 0365
 Facsimile: +27 44 874 0432
 Web: www.cape-eaprac.co.za
 17 Progress St
 PO Box 2070
 George 6530

1:50 000 TOPOGRAPHICAL PLANS



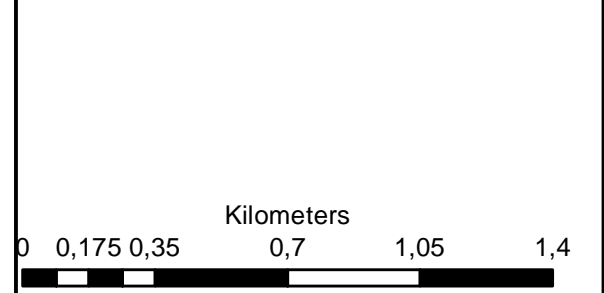
**Hotazel Solar
Amendment Application
Remaining Extent of Farm York
A 279**

Legend

- Remaining Extent of 279
- Remaining Extent of 280
- Portion 11 of 279
- Approved Site
- Hotazel Amendment Area

Notes

- Map Scale is 1: 20 000 when printed on A3
- Aerial image courtesy of Google Earth Pro 2020
- Imagery date December 2018



Grid Connections

- Eskom 66kV line
- Eskom 132kV line_Hotazel-Eldoret
- Eskom 132kV line
- Option 1 Grid LiLo (authorised)
- H1 Grid Corridor
- H1_Grid_Substation (authorised)
- H2_Grid_Substation proposed

Map Drawn By:	Date	Reference
Melissa Mackay	2020/04/23	JMO543A