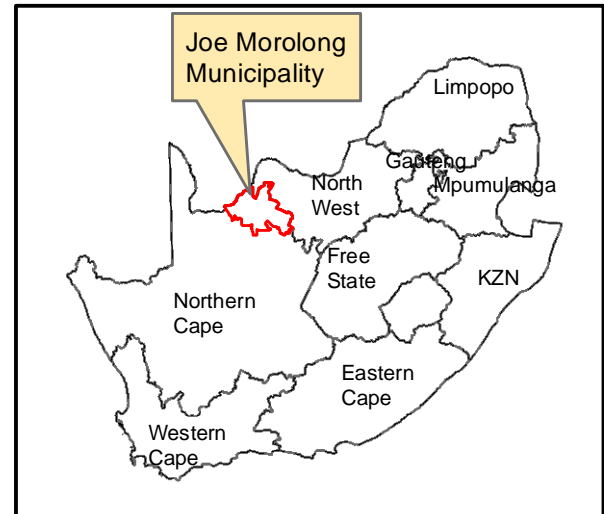


Vegetation Type
Vegetation Type & Ecosystem Status

- Gordonia Duneveld, Least Threatened
- Kathu Bushveld, Least Threatened



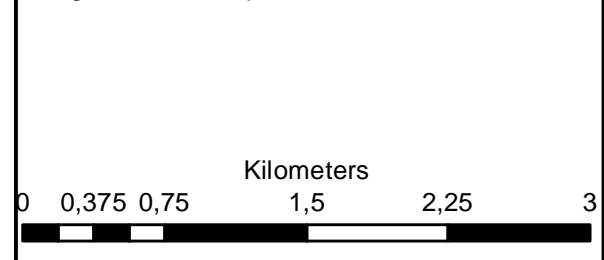
**Hotazel Solar
 Amendment Application
 Remaining Extent of Farm York
 A 279**

Legend

- Remaining Extent of 279
- Remaining Extent of 280
- Portion 11 of 279
- H1 Grid LiLo (authorised)
- H1 Grid Corridor
- <all other values>
- Approved Alternative
- Hotazel Amendment Area

Notes

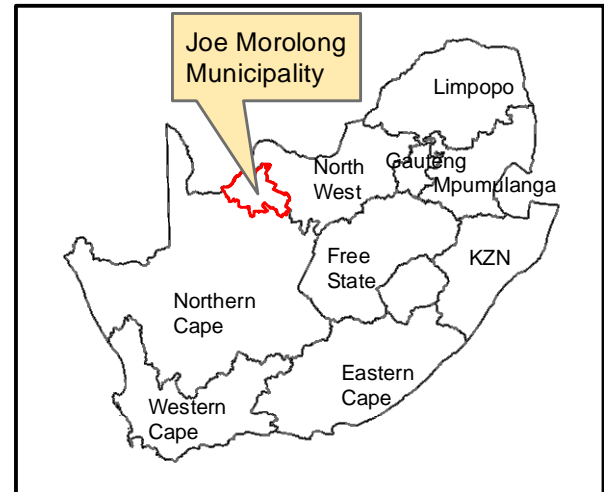
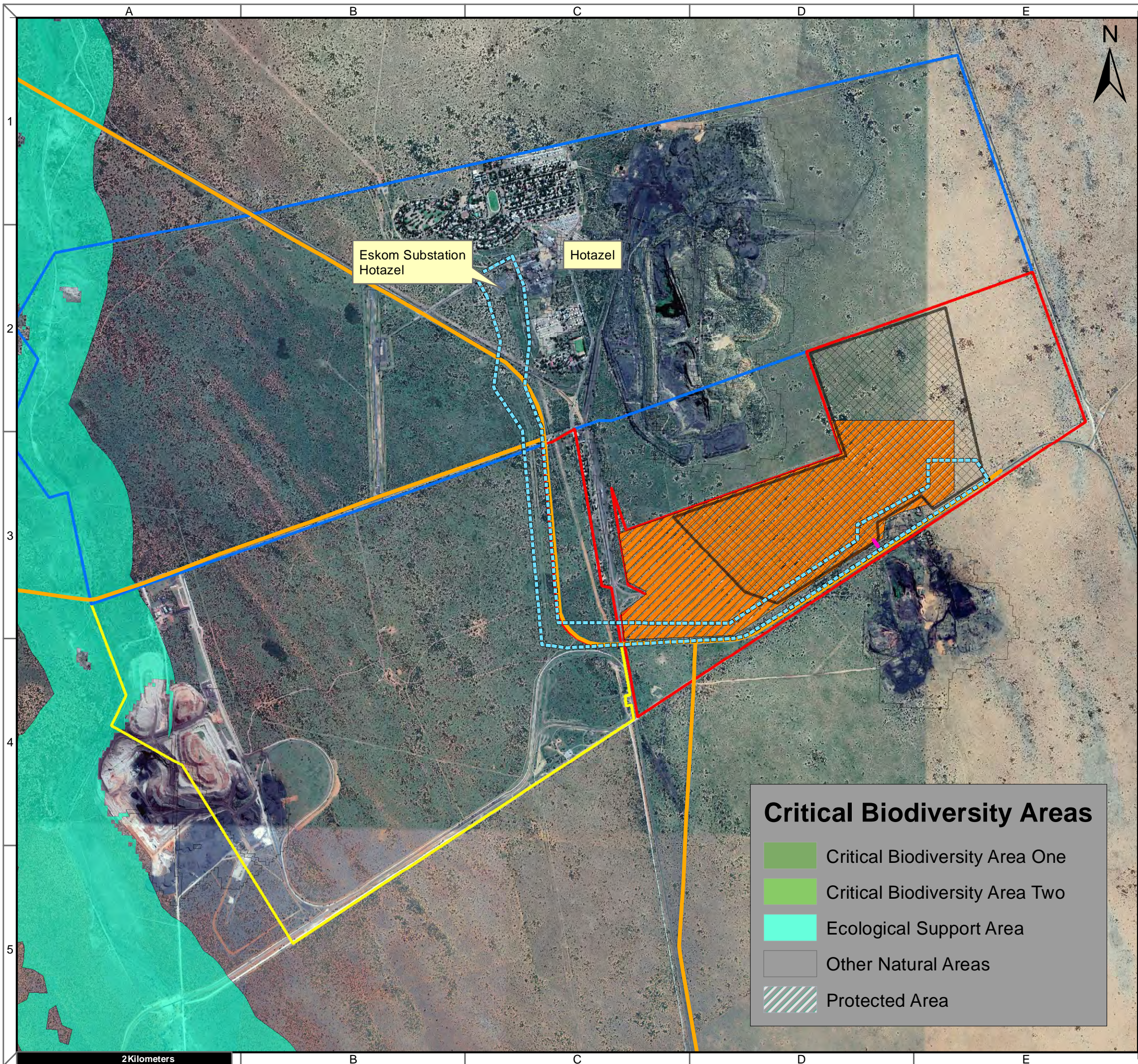
- Map Scale is 1: 40 000 when printed on A3
- Aerial image courtesy of Google Earth Pro 2020
- Imagery date May 2015
- Biodiversity data courtesy of SANBI BGIS 2018
- Vegetation data updated as of 2018



Map Drawn By:	Date	Reference
Melissa Mackay	2020/04/23	JMO543A

Cape Environmental Assessment Practitioners (Pty) Ltd
 Telephone: +27 44 874 0365
 Facsimile: +27 44 874 0432
 Web: www.cape-eaprac.co.za
 17 Progress St
 PO Box 2070
 George 6530

VEGETATION TYPE & ECOSYSTEM STATUS



**Hotazel Solar
Amendment Application
Remaining Extent of Farm York
A 279**

Legend

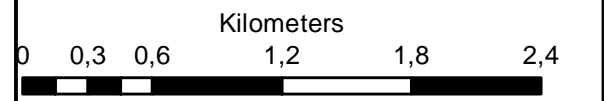
- Remaining Extent of 279
- Remaining Extent of 280
- Portion 11 of 279
- H1 Grid LiLo (authorised)
- H1 Grid Corridor
- Alternative 2
- Hotazel Amendment Area

Notes

- Map Scale is 1: 35 000 when printed on A3
- Aerial image courtesy of Google Earth Pro 2020
- Imagery date May 2015
- Biodiversity data courtesy of SANBI BGIS 2018
- NC CBA dated 2016

Critical Biodiversity Areas

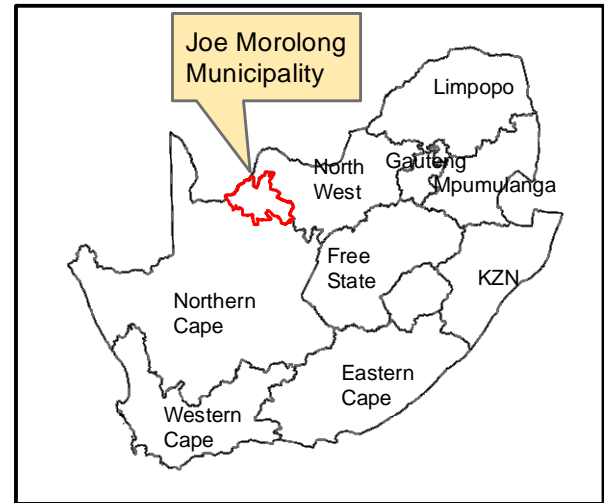
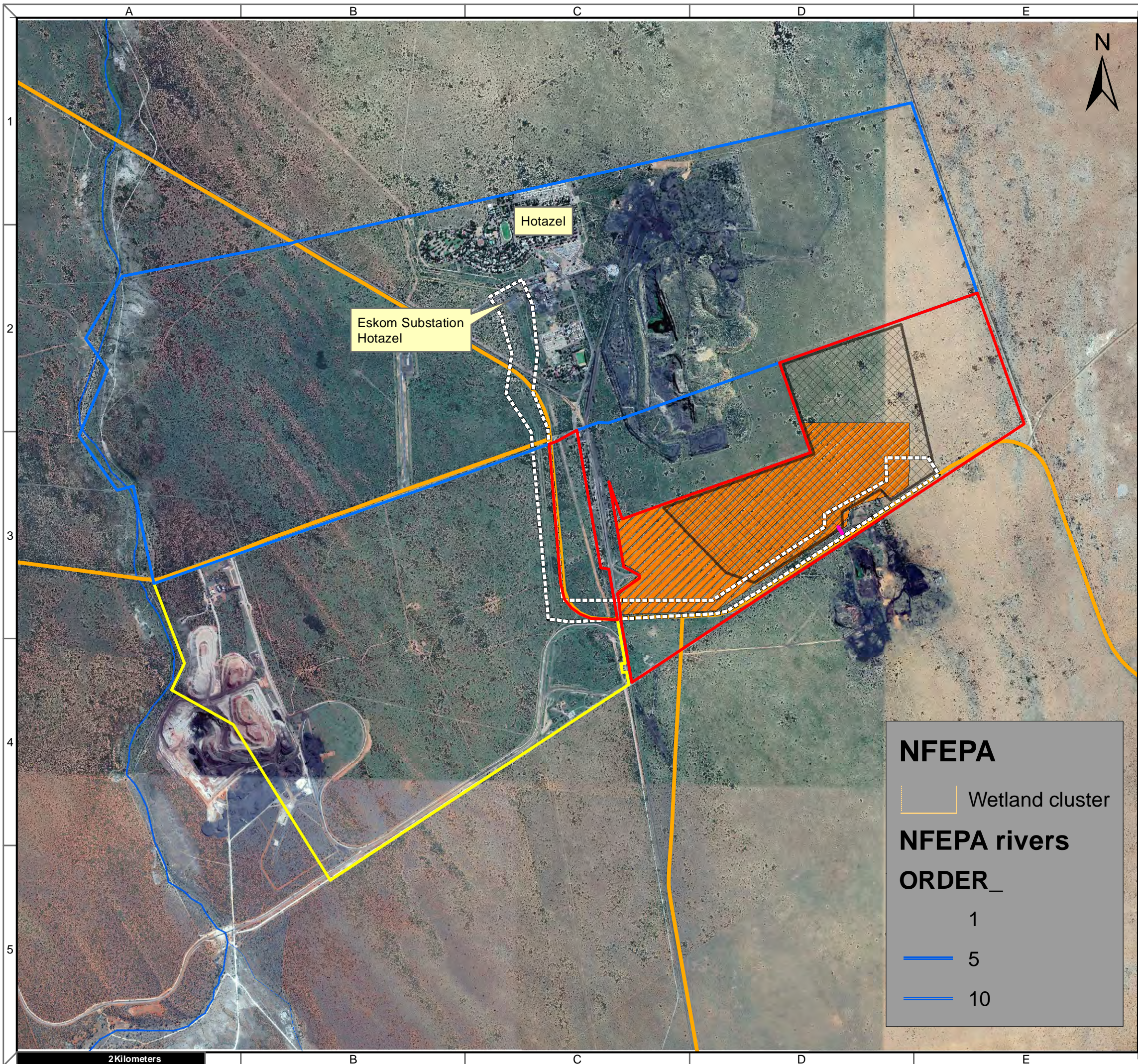
- Critical Biodiversity Area One
- Critical Biodiversity Area Two
- Ecological Support Area
- Other Natural Areas
- Protected Area



Map Drawn By:	Date	Reference
Melissa Mackay	2020/04/23	JMO543A

CRITICAL BIODIVERSITY AREAS

2 Kilometers



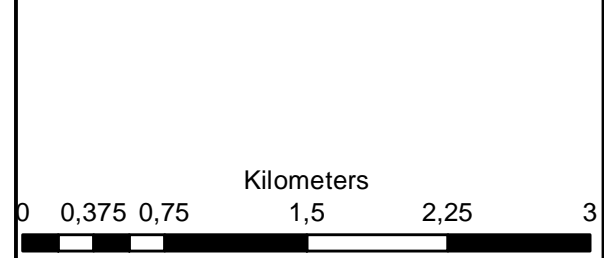
**Hotazel Solar
Amendment Application
Remaining Extent of Farm York
A 279**

Legend

- Remaining Extent of 279
- Remaining Extent of 280
- Portion 11 of 279
- H1 Grid LiLo (authorised)
- H1 Grid Corridor
- Approved Alternative
- Hotazel Amendment Area

Notes

- Map Scale is 1: 40 000 when printed on A3
- Aerial image courtesy of Google Earth Pro 2020
- Imagery date May 2015
- Biodiversity data courtesy of SANBI BGIS 2018



Map Drawn By:	Date	Reference
Melissa Mackay	2020/04/23	JMO543A

Cape Environmental Assessment Practitioners (Pty) Ltd
 Telephone: +27 44 874 0365
 Facsimile: +27 44 874 0432
 Web: www.cape-eaprac.co.za
 17 Progress St
 PO Box 2070
 George 6530