

Hotazel Solar 2 Remaining Extent of Farm York A 279

Legend

- H2_Grid_Corridor
- Remaining Extent of 279
- Remaining Extent of 280
- Portion 3 of 279
- Portion 11 of 279
- H2_Site boundary
- MAIN ROAD
- Railway Lines

Notes

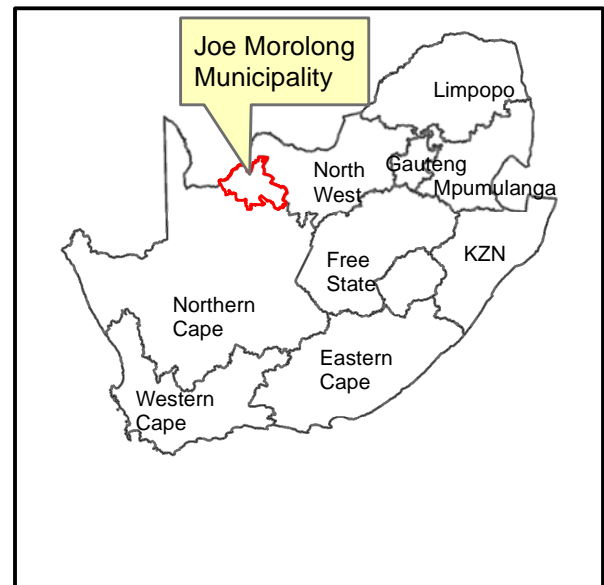
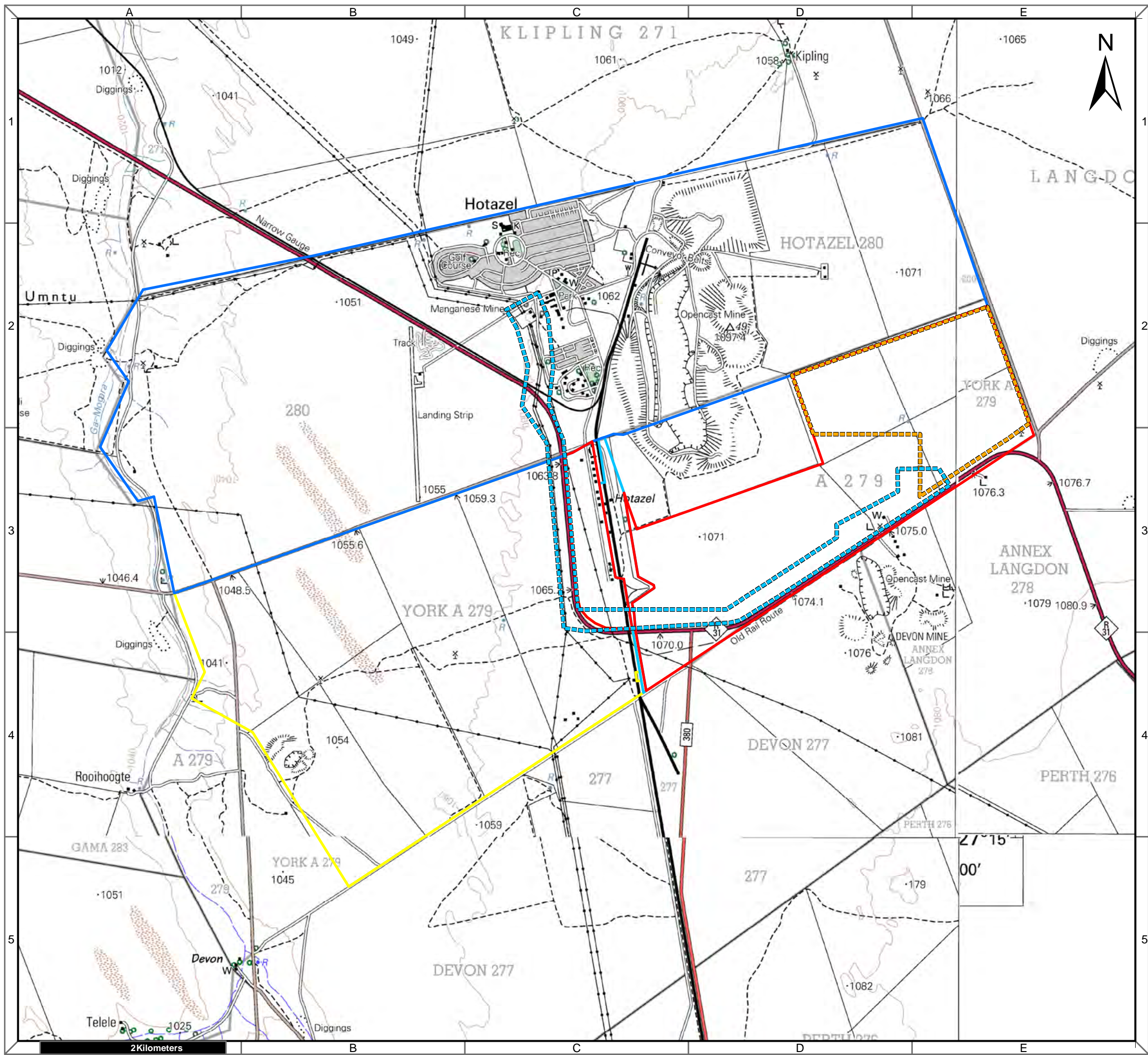
- Map Scale is 1: 80 000 when printed on A3
- Aerial image courtesy of Google Earth Pro 2020
- Imagery date May 2015
- Wind data courtesy of Metar 2017
- Nearest Metar station is Upington (FAUP) approx. 210kms south west

Kilometers




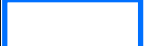


| | | |
|----------------|------------|-----------|
| Map Drawn By: | Date | Reference |
| Melissa Mackay | 2020/06/24 | JMO637 |

Cape Environmental Assessment Practitioners (Pty) Ltd
 Telephone: +27 44 874 0365
 Facsimile: +27 44 874 0432
 Web: www.cape-eaprac.co.za

17 Progress St
 PO Box 2070
 George 6530



Hotazel Solar 2 Remaining Extent of Farm York A 279

- #### Legend
-  H2_Grid_Corridor
 -  H2_Site boundary
 -  Remaining Extent of 279
 -  Remaining Extent of 280
 -  Portion 3 of 279
 -  Portion 11 of 279

Notes

- Map Scale is 1: 40 000 when printed on A3
- Topographical data courtesy of Surveyor General
- Imagery date 2010 and 2013

| | | |
|----------------|------------|-----------|
| Map Drawn By: | Date | Reference |
| Melissa Mackay | 2020/06/24 | JMO637 |

Cape Environmental Assessment Practitioners (Pty) Ltd
 Telephone: +27 44 874 0365
 Facsimile: +27 44 874 0432
 Web: www.cape-eaprac.co.za

17 Progress St
 PO Box 2070
 George 6530

1:50 000 TOPOGRAPHICAL PLANS

2 Kilometers