

**Hotazel Solar 2  
Remaining Extent of Farm  
York A 279**

**Legend**

- H2\_Grid\_Corridor
- H2\_Site boundary
- MAIN ROAD
- Railway Lines
- Remaining Extent of 279
- Remaining Extent of 280
- Portion\_3\_of\_279
- Portion 11 of 279

**Notes**

- Map Scale is 1: 40 000 when printed on A3
- Aerial image courtesy of Google Earth Pro 2020
- Imagery date December 2018
- Biodiversity data courtesy of SANBI BGIS 2018
- Vegetation data updated as of 2018

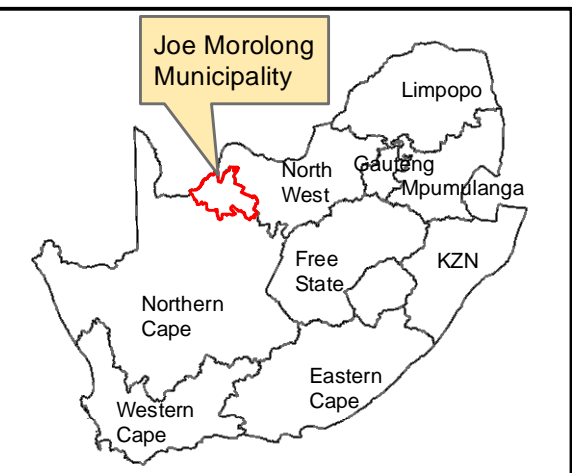
Map Drawn By:	Date	Reference
Melissa Mackay	2020/06/24	JMO637

**Cape Environmental Assessment Practitioners (Pty) Ltd**  
 Telephone: +27 44 874 0365  
 Facsimile: +27 44 874 0432  
 Web: www.cape-eaprac.co.za  
 17 Progress St  
 PO Box 2070  
 George 6530

**Vegetation Type**

**Vegetation Type & Ecosystem Status**

- Gordonia Duneveld, Least Threatened
- Kathu Bushveld, Least Threatened



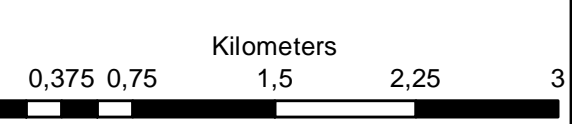
## Hotazel Solar 2 Remaining Extent of Farm York A 279

### Legend

- H2\_Site boundary
- H2\_Grid\_Corridor
- MAIN ROAD
- Railway Lines
- Remaining Extent of 279
- Remaining Extent of 280
- Portion\_3\_of\_279
- Portion 11 of 279

### Notes

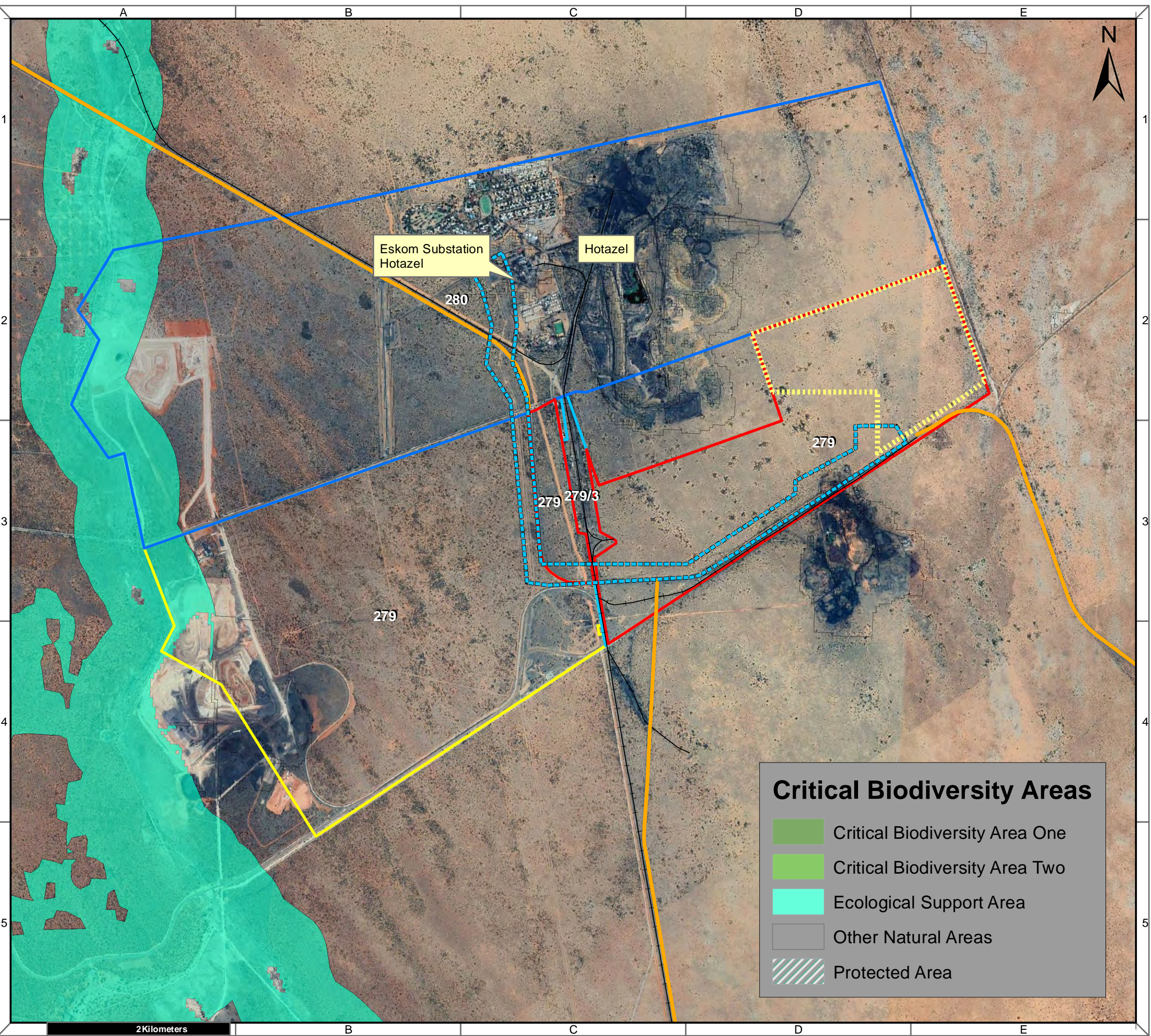
- Map Scale is 1: 35 000 when printed on A3
- Aerial image courtesy of Google Earth Pro 2020
- Imagery date December 2018
- Biodiversity data courtesy of SANBI BGIS 2018
- NC CBA dated 2016



Map Drawn By:	Date	Reference
Melissa Mackay	2020/06/24	JMO637

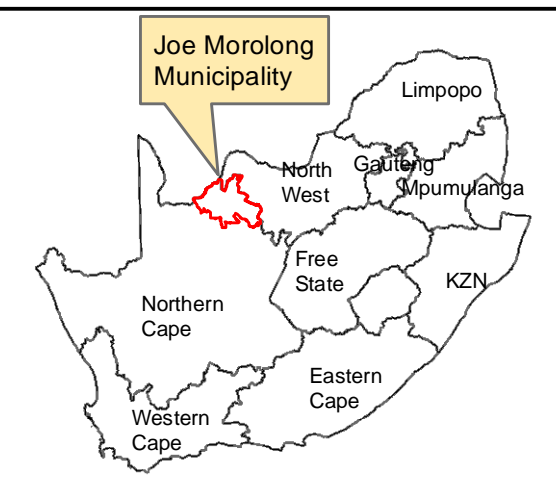
**Cape Environmental Assessment Practitioners (Pty) Ltd**  
 Telephone: +27 44 874 0365  
 Facsimile: +27 44 874 0432  
 Web: www.cape-eaprac.co.za  
 17 Progress St  
 PO Box 2070  
 George 6530

**CRITICAL BIODIVERSITY AREAS**



### Critical Biodiversity Areas

- Critical Biodiversity Area One
- Critical Biodiversity Area Two
- Ecological Support Area
- Other Natural Areas
- Protected Area



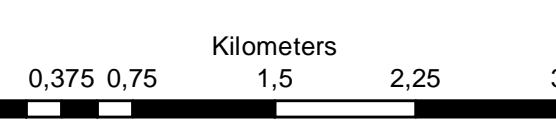
### Hotazel Solar 2 Remaining Extent of Farm York A 279

**Legend**

- - - - - H2\_Grid\_Corridor
- - - - - H2\_Site boundary
- MAIN ROAD
- + + + + + Railway Lines
- Remaining Extent of 279
- Remaining Extent of 280
- Portion\_3\_of\_279
- Portion 11 of 279

**Notes**

- Map Scale is 1: 40 000 when printed on A3
- Aerial image courtesy of Google Earth Pro 2020
- Imagery date May 2015
- Biodiversity data courtesy of SANBI BGIS 2018

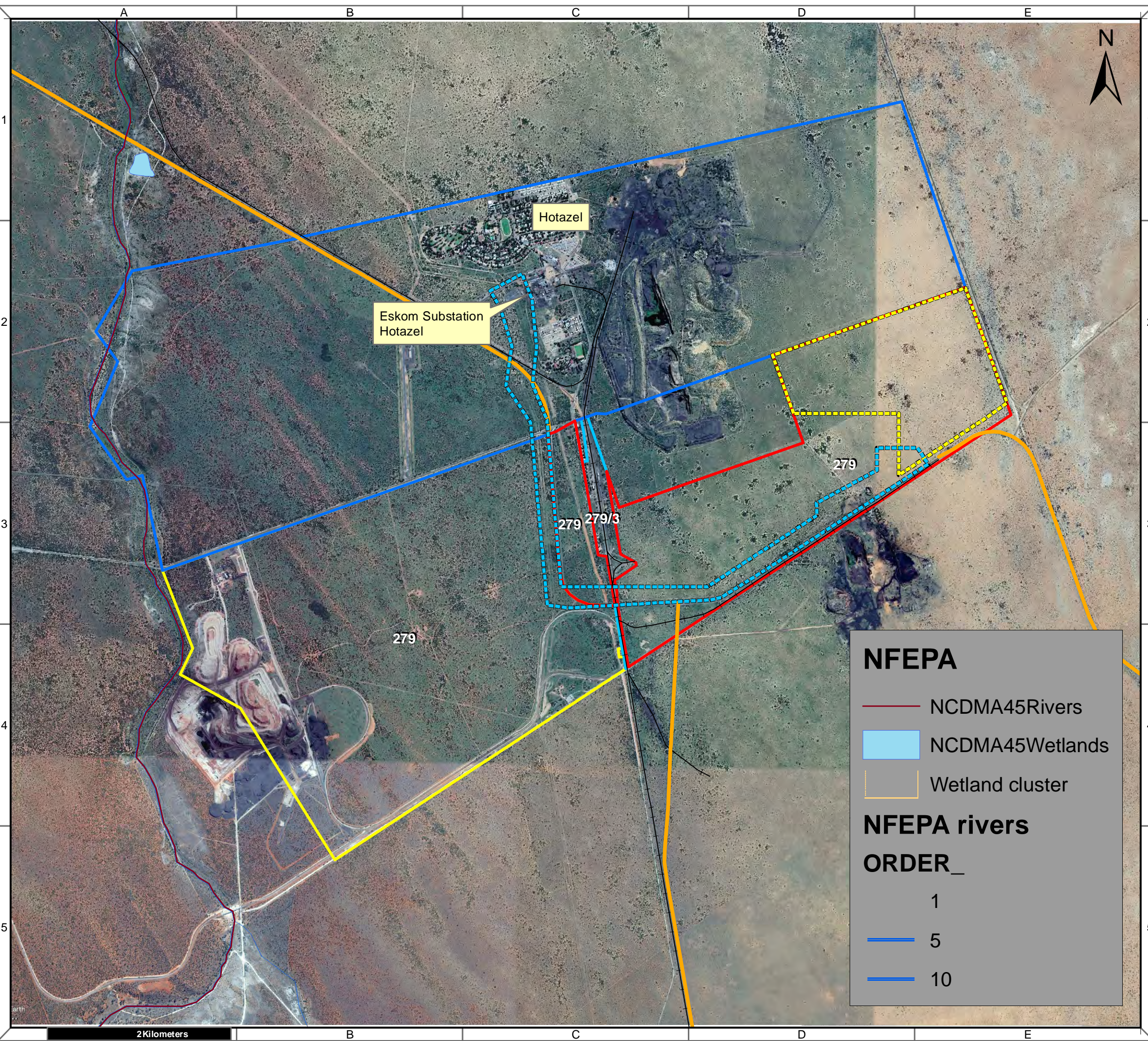


Map Drawn By:	Date	Reference
Melissa Mackay	2020/06/24	JMO637

**Cape Environmental Assessment Practitioners (Pty) Ltd**  
Reg. No. 2003/004637/07

Telephone: +27 44 874 0365  
 Facsimile: +27 44 874 0432  
 Web: www.cape-eaprac.co.za

17 Progress St  
 PO Box 2070  
 George 6530



**NFEPA**

- NCDMA45Rivers
- NCDMA45Wetlands
- Wetland cluster

**NFEPA rivers**

**ORDER\_**

- 1
- 5
- 10