

R380  
To Botswana

R380

Hotazel

280

279 279/3

279

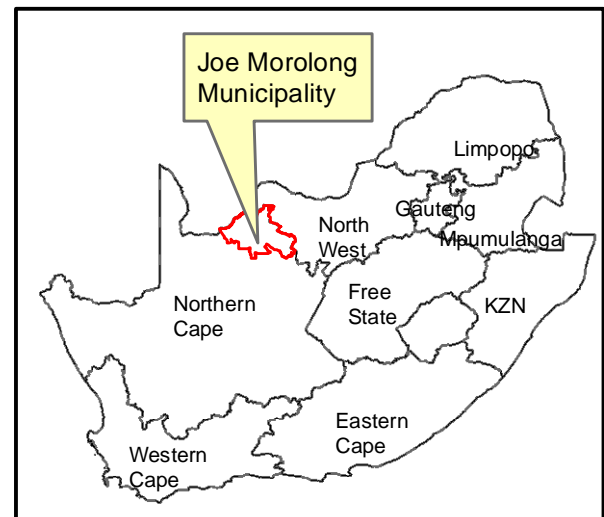
R380

R31

R31  
To Kuruman

R380  
To Kathu

Site Co-ordinates:  
27°13'07"S  
22°59'35"E



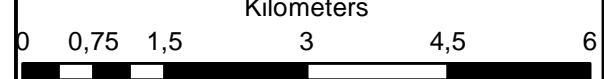
### Hotazel Solar 2 Remaining Extent of Farm York A 279

#### Legend

- H2\_Grid\_Corridor
- Remaining Extent of 279
- Remaining Extent of 280
- Portion 3 of 279
- Portion 11 of 279
- H2\_Site boundary
- MAIN ROAD
- Railway Lines

**Notes**

- Map Scale is 1: 80 000 when printed on A3
- Aerial image courtesy of Google Earth Pro 2020
- Imagery date May 2015
- Wind data courtesy of Metar 2017
- Nearest Metar station is Upington (FAUP) approx. 210kms south west



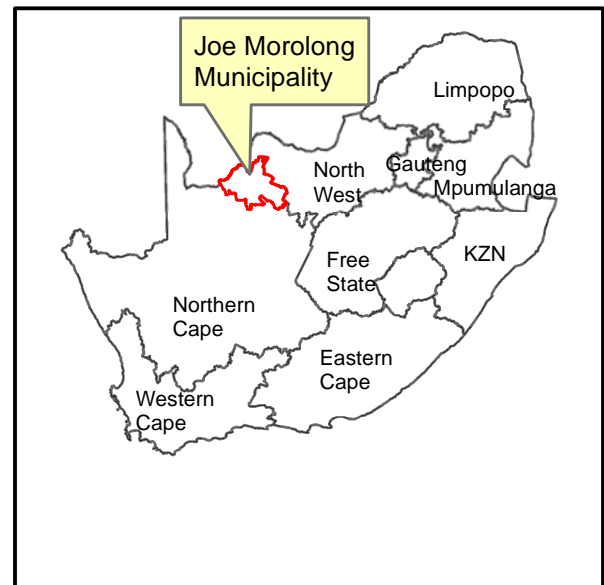
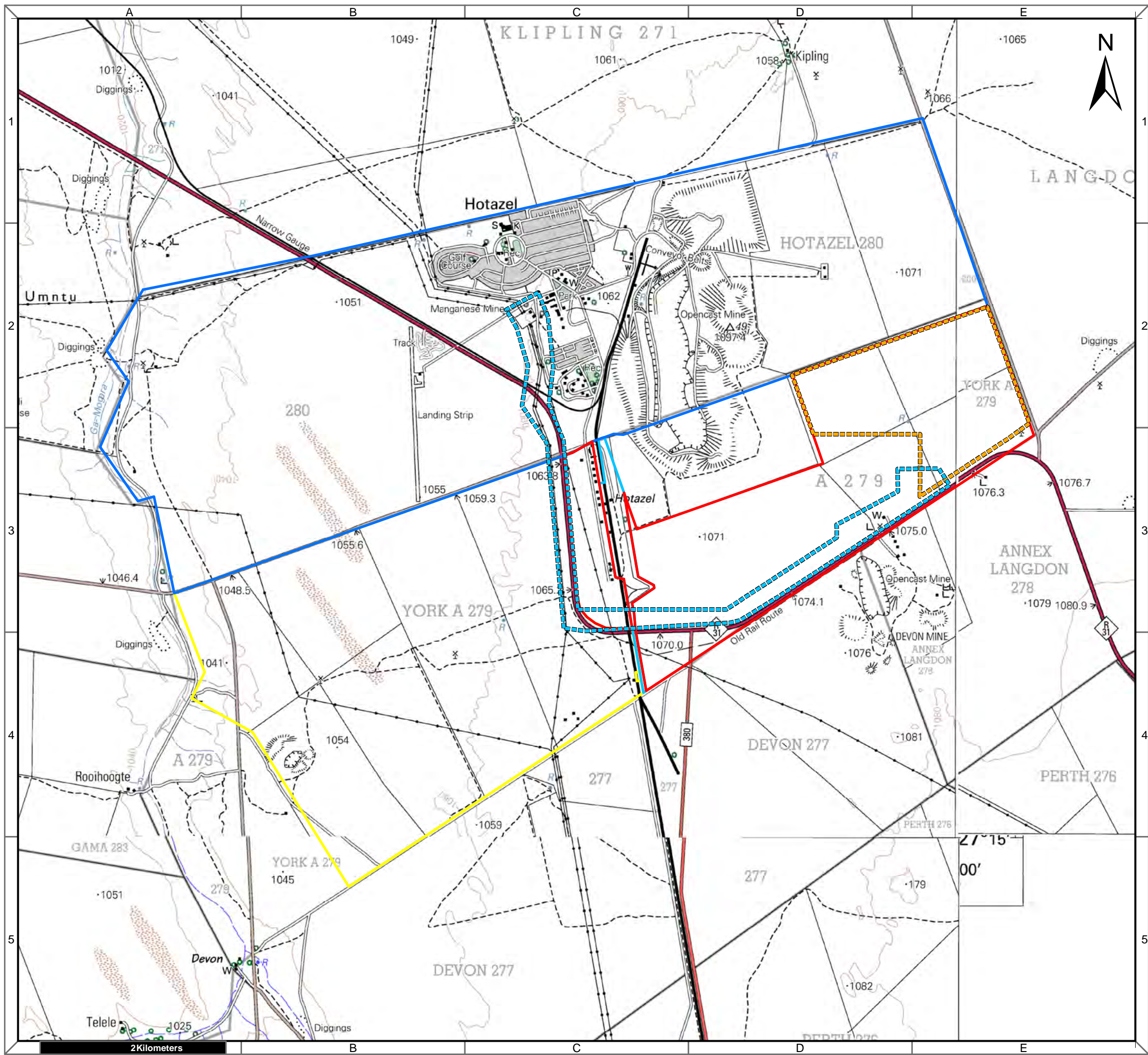
Map Drawn By:	Date	Reference
Melissa Mackay	2020/06/24	JMO637

**Cape Environmental Assessment Practitioners (Pty) Ltd**  
 Telephone: +27 44 874 0365  
 Facsimile: +27 44 874 0432  
 Web: www.cape-eaprac.co.za  
 17 Progress St  
 PO Box 2070  
 George 6530

LOCATION PLANS

4,5 Kilometers





### Hotazel Solar 2 Remaining Extent of Farm York A 279

- #### Legend
- H2\_Grid\_Corridor
  - H2\_Site boundary
  - Remaining Extent of 279
  - Remaining Extent of 280
  - Portion 3 of 279
  - Portion 11 of 279

#### Notes

- Map Scale is 1: 40 000 when printed on A3
- Topographical data courtesy of Surveyor General
- Imagery date 2010 and 2013

Map Drawn By:	Date	Reference
Melissa Mackay	2020/06/24	JMO637

**Cape Environmental Assessment Practitioners (Pty) Ltd**  
 Telephone: +27 44 874 0365  
 Facsimile: +27 44 874 0432  
 Web: www.cape-eaprac.co.za  
 17 Progress St  
 PO Box 2070  
 George 6530

**1:50 000 TOPOGRAPHICAL PLANS**