

**Hotazel Solar 2
Remaining Extent of Farm
York A 279**

Legend

- H2_Grid_Corridor
- H2_Site boundary
- MAIN ROAD
- Railway Lines
- Remaining Extent of 279
- Remaining Extent of 280
- Portion_3_of_279
- Portion 11 of 279

Notes

- Map Scale is 1: 40 000 when printed on A3
- Aerial image courtesy of Google Earth Pro 2020
- Imagery date December 2018
- Biodiversity data courtesy of SANBI BGIS 2018
- Vegetation data updated as of 2018

Map Drawn By:	Date	Reference
Melissa Mackay	2020/06/24	JMO637

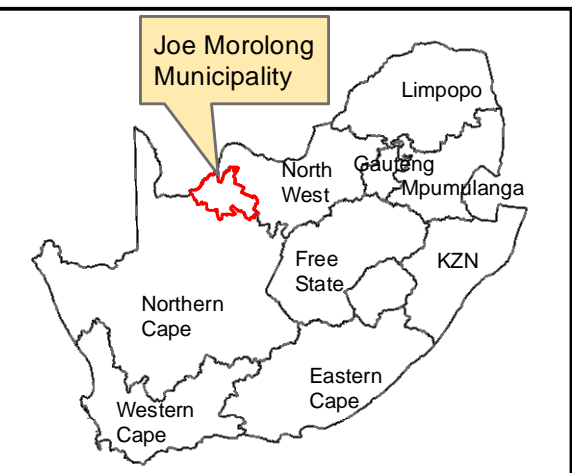
Cape Environmental Assessment Practitioners (Pty) Ltd
 Telephone: +27 44 874 0365
 Facsimile: +27 44 874 0432
 Web: www.cape-eaprac.co.za
 17 Progress St
 PO Box 2070
 George 6530

Vegetation Type & Ecosystem Status

- Gordonia Duneveld, Least Threatened
- Kathu Bushveld, Least Threatened

VEGETATION TYPE & ECOSYSTEM STATUS

2 Kilometers



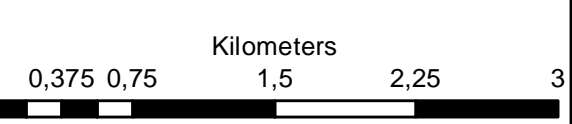
Hotazel Solar 2 Remaining Extent of Farm York A 279

Legend

- H2_Site boundary
- H2_Grid_Corridor
- MAIN ROAD
- Railway Lines
- Remaining Extent of 279
- Remaining Extent of 280
- Portion_3_of_279
- Portion 11 of 279

Notes

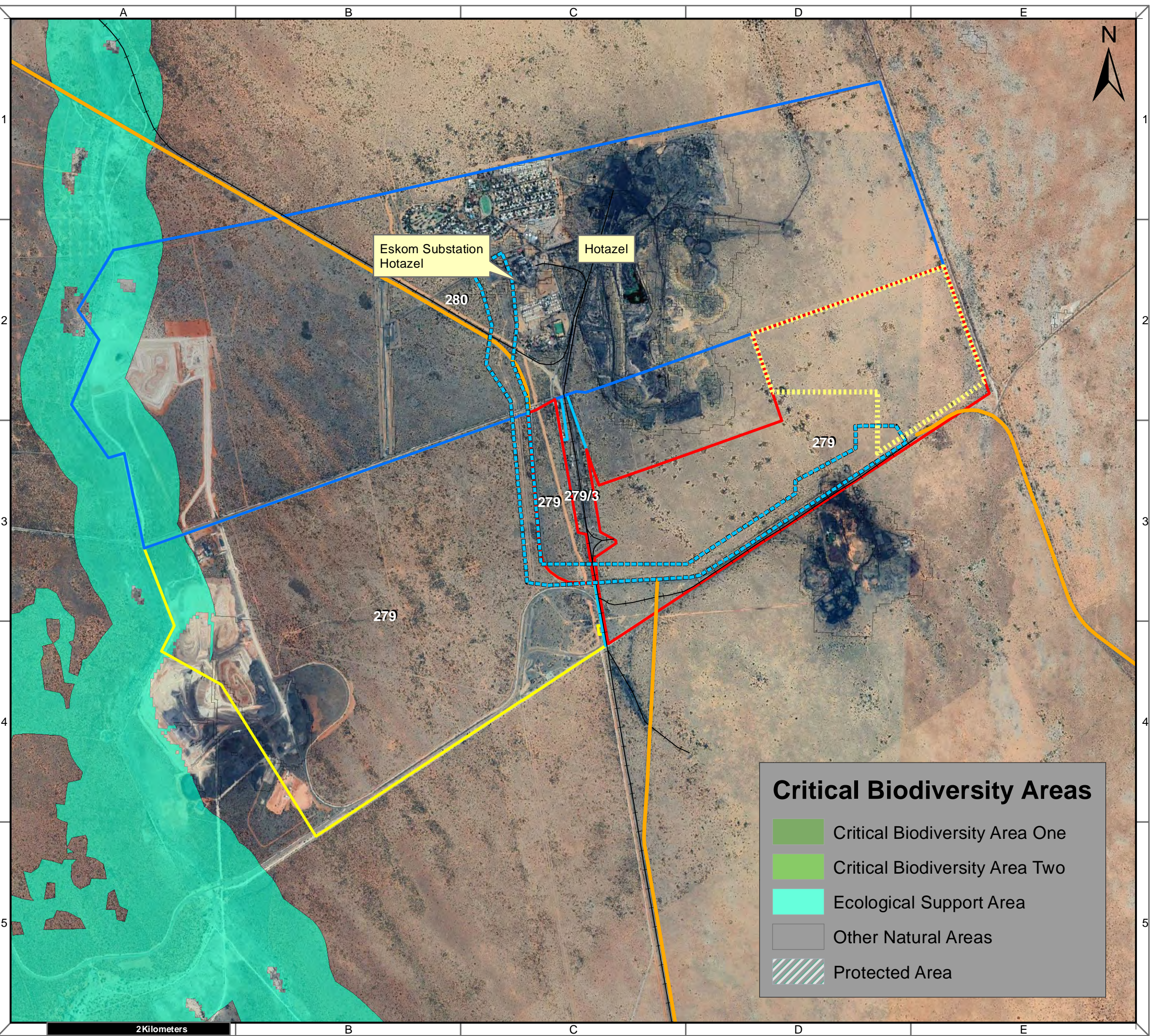
- Map Scale is 1: 35 000 when printed on A3
- Aerial image courtesy of Google Earth Pro 2020
- Imagery date December 2018
- Biodiversity data courtesy of SANBI BGIS 2018
- NC CBA dated 2016



Map Drawn By:	Date	Reference
Melissa Mackay	2020/06/24	JMO637

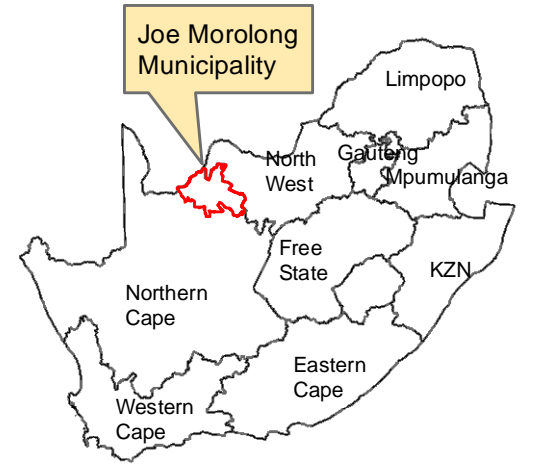
Cape Environmental Assessment Practitioners (Pty) Ltd
 Telephone: +27 44 874 0365
 Facsimile: +27 44 874 0432
 Web: www.cape-eaprac.co.za
 17 Progress St
 PO Box 2070
 George 6530

CRITICAL BIODIVERSITY AREAS



Critical Biodiversity Areas

- Critical Biodiversity Area One
- Critical Biodiversity Area Two
- Ecological Support Area
- Other Natural Areas
- Protected Area



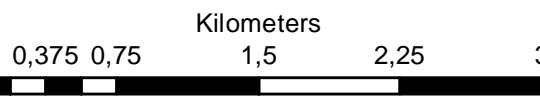
**Hotazel Solar 2
Remaining Extent of Farm
York A 279**

Legend

- H2_Grid_Corridor
- H2_Site boundary
- MAIN ROAD
- Railway Lines
- Remaining Extent of 279
- Remaining Extent of 280
- Portion_3_of_279
- Portion 11 of 279

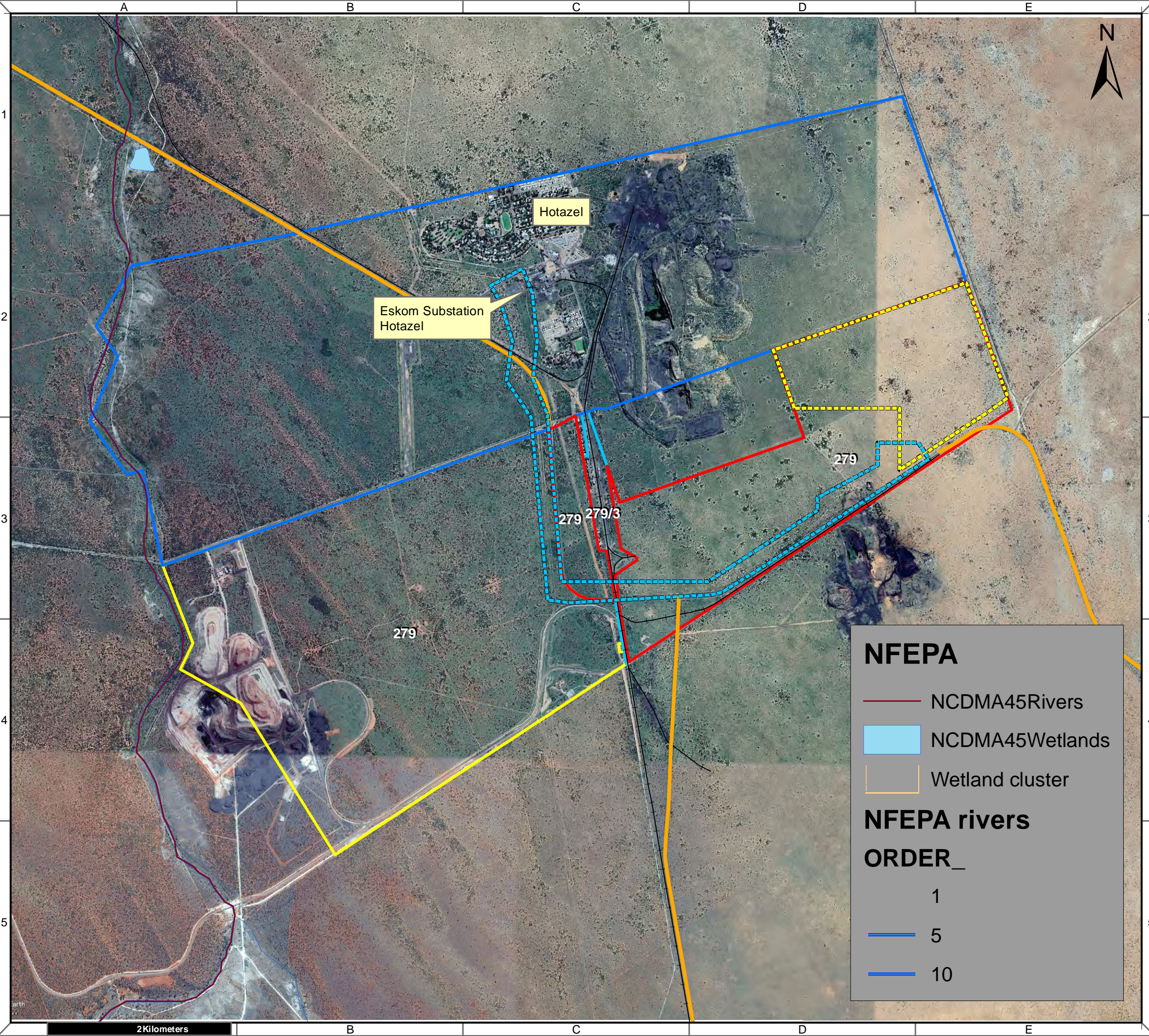
Notes

- Map Scale is 1: 40 000 when printed on A3
- Aerial image courtesy of Google Earth Pro 2020
- Imagery date May 2015
- Biodiversity data courtesy of SANBI BGIS 2018



Map Drawn By:	Date	Reference
Melissa Mackay	2020/06/24	JMO637

Cape Environmental Assessment Practitioners (Pty) Ltd
 Telephone: +27 44 874 0365
 Facsimile: +27 44 874 0432
 Web: www.cape-eaprac.co.za
 17 Progress St
 PO Box 2070
 George 6530



NFEPA

- NCDMA45Rivers
- NCDMA45Wetlands
- Wetland cluster

NFEPA rivers

ORDER_

- 1
- 5
- 10