

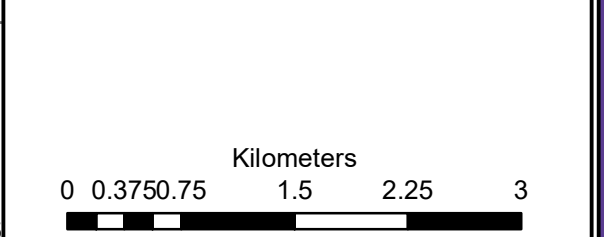
Diepwalle Tented Camp

Legend

- Cycle Way
- Dirt Track
- - - - - Hiking Trail
- Secondary Road (Ground)
- River
- Garden Route National Park
- Cadastral

Notes

- Map Scale is 1: 50 000 when printed on A3
- Topographical data courtesy of the Chief Surveyor: National Geospatial Information
- Nearest Metar station is George Airport (FAGG) approx. 42kms west

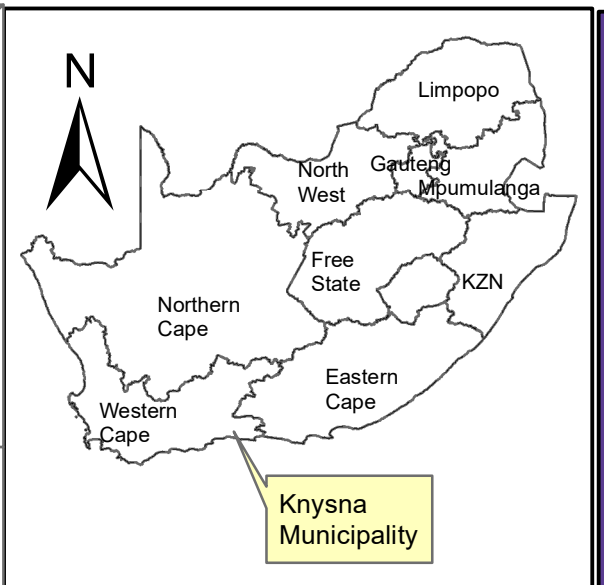
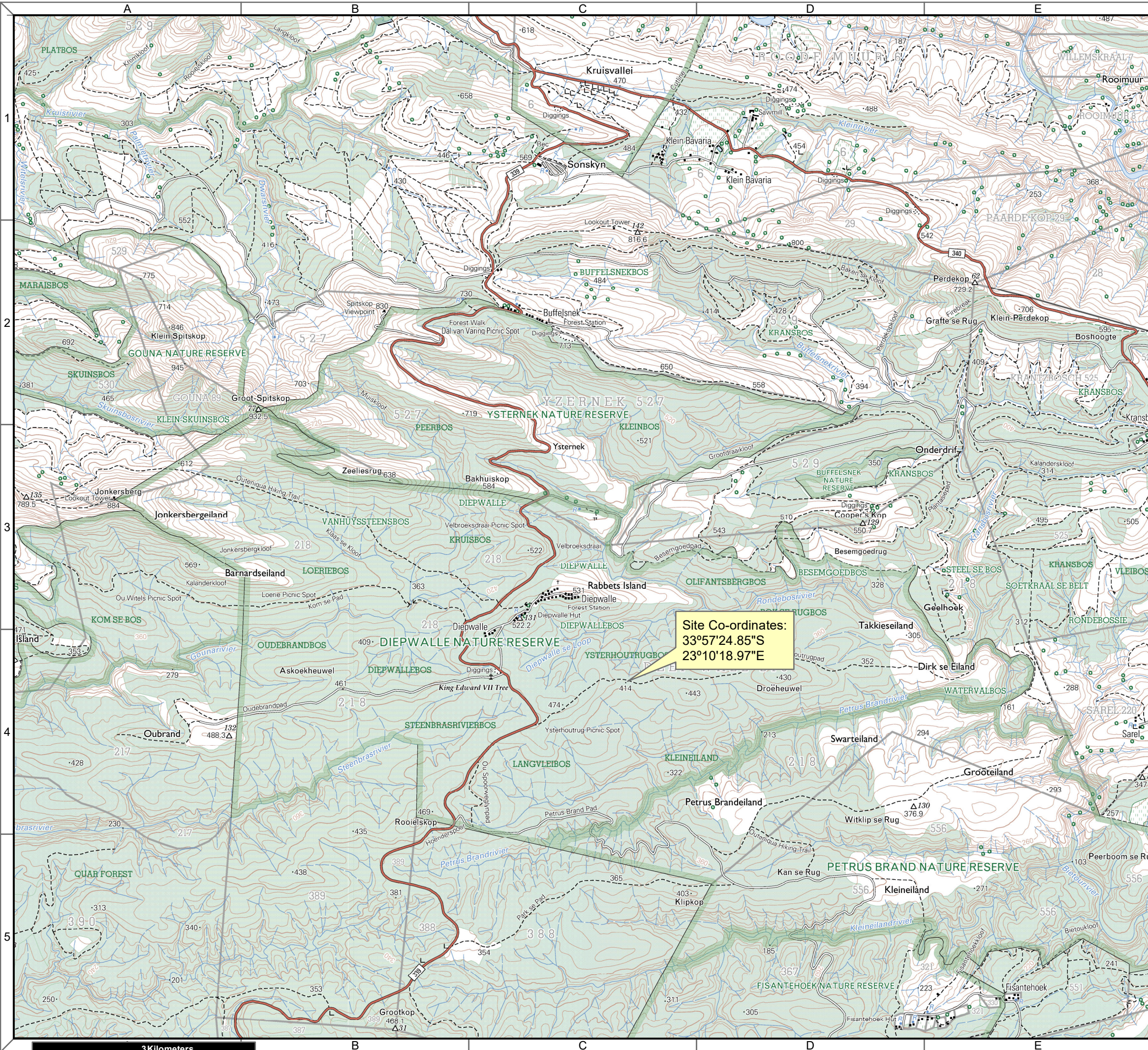


Map Drawn By:	Date	Reference
Danuta Hodgson	2024/01/16	KNY650

Cape Environmental Assessment Practitioners (Pty) Ltd
Reg. No. 2008/04027/07

Telephone: +27 44 874 0365 17 Progress St
 Facsimile: +27 44 874 0432 PO Box 2070
 Web: www.cape-eaprac.co.za George 6530

Source: Esri, Maxar, Earthstar Geographics, and the GIS User Community



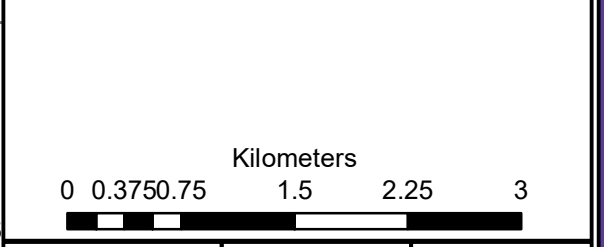
Diepwalle Tented Camp

Legend

- International Boundary and Beacon.....
- Provincial Boundary.....
- Protected Area.....
- Perennial River.....
- Perennial Water.....
- Non-perennial River.....
- Non-Perennial Water.....
- Dry Water Course.....
- Dry Pan.....
- Marsh and Vlei.....
- Pipeline (above ground).....
- Water Tower; Reservoir; Water Point.....
- Coastal Rocks.....
- Prominent Rock Outcrop.....
- Erosion; Sand.....
- Woodland.....
- Cultivated Land.....
- Orchard or Vineyard.....
- Recreation Ground.....
- Row of Trees.....
- Mine Dump; Excavation.....

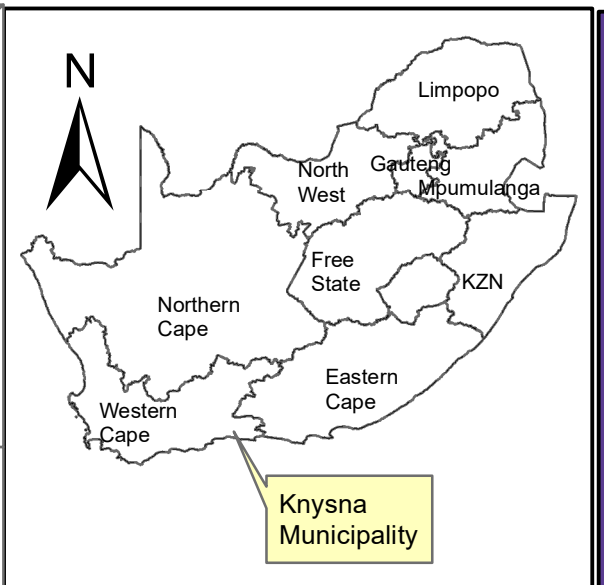
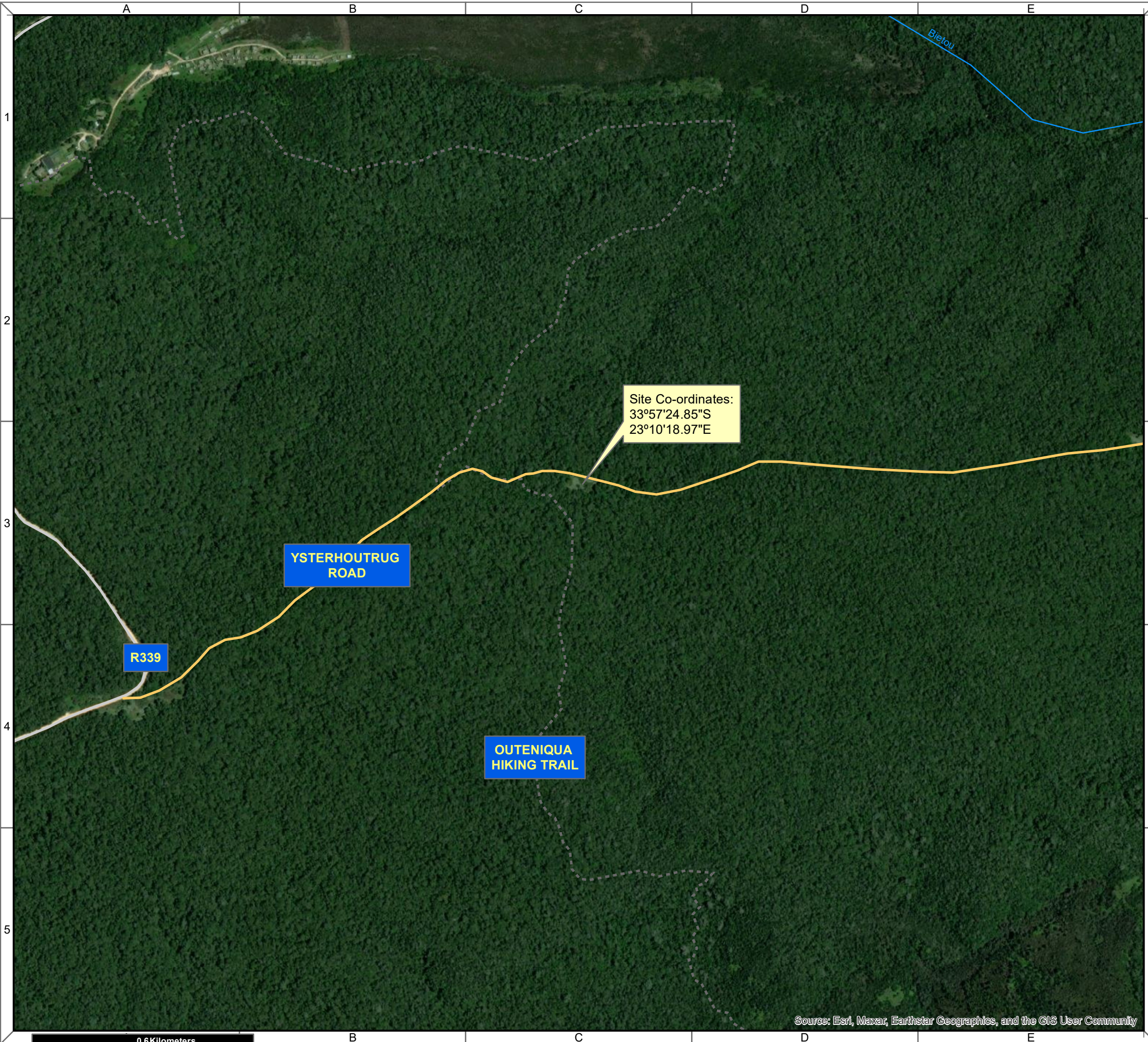
Notes

- Map Scale is 1: 50 000 when printed on A3
- Topographical data courtesy of the Chief Surveyor: National Geospatial Information
- Nearest Metar station is George Airport (FAGG) approx. 42kms west



Map Drawn By:	Date	Reference
Danuta Hodgson	2024/01/16	KNY650

LOCATION PLANS



Diepwalle Tented Camp

- Legend**
- Cycle Way
 - Dirt Track
 - Hiking Trail
 - Secondary Road (Ground)
 - River

Notes

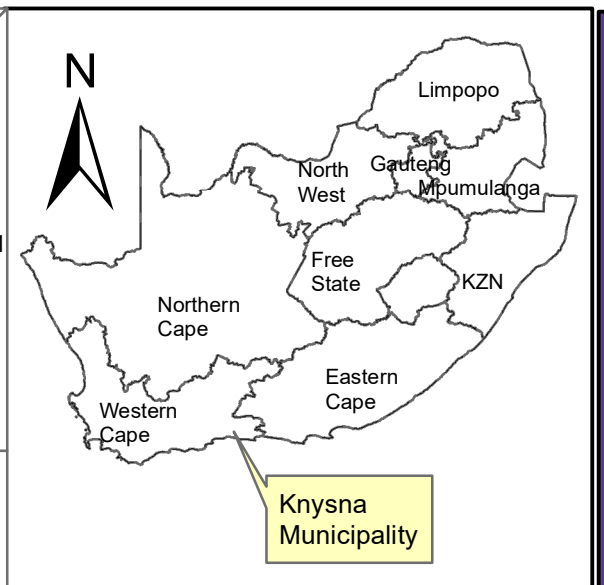
- Map Scale is 1: 10 000 when printed on A3
- Topographical data courtesy of the Chief Surveyor: National Geospatial Information
- Nearest Metar station is George Airport (FAGG) approx. 42kms west

Map Drawn By:	Date	Reference
Danuta Hodgson	2024/01/16	KNY650





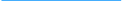
Cape Environmental Assessment Practitioners (Pty) Ltd
 Reg. No. 2008/004627/07
 Telephone: +27 44 874 0365
 Facsimile: +27 44 874 0432
 Web: www.cape-eaprac.co.za
 17 Progress St
 PO Box 2070
 George 6530

Source: Esri, Maxar, Earthstar Geographics, and the GIS User Community

0.6 Kilometers

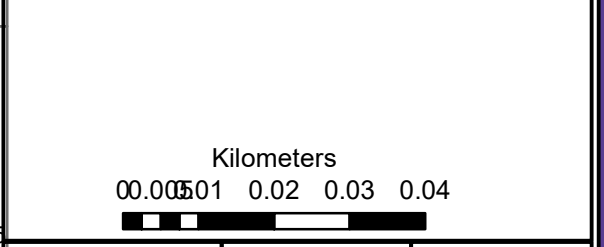


Diepwalle Tented Camp

- Legend**
-  Cycle Way
 -  Dirt Track
 -  Hiking Trail
 -  Secondary Road (Ground)
 -  River

Notes

- Map Scale is 1: 1000 when printed on A3
- Topographical data courtesy of the Chief Surveyor: National Geospatial Information
- Nearest Metar station is George Airport (FAGG) approx. 42kms west



Map Drawn By:	Date	Reference
Danuta Hodgson	2024/01/16	KNY650