



# ENVIRONMENTAL MANAGEMENT PROGRAMME

REVISION 1

for  
**MIDAS BATTERY ENERGY  
STORAGE FACILITY**

on

Portion 10 of the Farm Uitval 280

In terms of the  
National Environmental Management Act (Act No. 107 of 1998, as  
amended) & 2014 Environmental Impact Regulations

Prepared for Applicant: Midas BESS(Pty) Ltd

Date: 15 July 2024

**Author of Report:** Dale Holder

**Author Email:** dale@cape-eaprac.co.za

**Report Reference:** MER839.04

**Department Reference:** To be allocated.

**Cape EA Prac**

Cape Environmental Assessment Practitioners

Tel: +27 44 874 0365 PO Box 2070, George 6530  
Fax: +27 44 874 0432 17 Progress Street, George

[www.cape-eaprac.co.za](http://www.cape-eaprac.co.za)




# DOCUMENT TRACKING

## DOCUMENT HISTORY

REVISION	DATE	AUTHOR
Draft EMPR – Revision 1	July 2024	Dale Holder – Cape EAPrac.

## APPROVAL FOR RELEASE

NAME	TITLE	SIGNATURE
Dale Holder	Senior Environmental Practitioner	

## DISTRIBUTION

DISTRIBUTION LIST
Department of Environment, Forestry and Fisheries
Midas BESS (Pty) Ltd

## SUBMISSION AND CORRESPONDENCE

SUBMISSION / CORRESPONDENCE	DATE
Draft EMPr submitted	16 July 2024
Draft EMPr for I&AP comment	16 July 2024
DFFE Comment on Draft EMPr	Pending
Final EMPr submitted	Pending
Final EMPr Approved	Pending

**APPOINTED ENVIRONMENTAL ASSESSMENT PRACTITIONER:**

Cape EAPrac Environmental Assessment Practitioners

PO Box 2070

George

6530

Tel: 044-874 0365

Fax: 044-874 0432

**Report written & compiled by:** Dale Holder (Ndip Nature Conservation), who has over 15 years' experience as an environmental practitioner.

**Registrations:** Registered Environmental Assessment Practitioner with EAPASA (Reg# 2019/301). International Association for Impact Assessment (IAIA)

**PURPOSE OF THIS REPORT:**

I&AP Review and Comment

**APPLICANT:**

Midas BESS (Pty) Ltd

**CAPE EAPRAC REFERENCE NO:**

MER839/04

**DEPARTMENT REFERENCE:**

To be allocated

**SUBMISSION DATE:**

15 July 2024

**TO BE CITED AS:**

Cape EAPrac, 2024. Environmental Management Programme – Revision 1 Midas Battery Energy Storage Facility on Portion 10 of the Farm Uitval 280. Report Reference: CRV804/03

**DOCUMENT REVISION**

Draft EMPr – Revision 1

July 2024

## EMPR LEGISLATIVE REQUIREMENTS

Appendix 4 of Regulation 982 of the 2014 EIA Regulations contains the required contents of an Environmental Management Programme (EMPr). The checklist below serves as a summary of how these requirements were incorporated into this EMPr.

Requirement	Description
Details of the EAP who prepared the EMPr; and; The expertise of the EAP to prepare an EMPr, including a curriculum vitae.	This EMPr was prepared by Dale Holder of Cape EAPrac who has more than 20 years' experience as an Environmental Assessment Practitioner. The CV and Registration of the EAP is attached in appendix I.
A detailed description of the aspects of the activity that are covered by the EMPr as identified by the project description.	This EMPr covers all aspects of the project as currently Proposed for the Midas Battery Energy Storage Facility.  1
A map at an appropriate scale which superimposes the proposed activity, its associated structures, and infrastructure on the environmental sensitivities of the preferred site, indicating any areas that should be avoided, including buffers	The Site Development Plan attached in Appendix A, includes the sensitive features identified by participating specialists and indicates how these have been incorporated. The "exclusion areas" identified on this SDP as well as all areas outside of the perimeter fencing of the facility are considered as no go areas for construction activities.
A description of the impact management objectives, including management statements, identifying the impacts and risks that need to be avoided, managed and mitigated as identified through the environmental impact assessment process for all the phases of the development including – (i) Planning and design; (ii) Pre-construction activities; (iii) Construction activities; (iv) Rehabilitation of the environment after construction and where applicable post closure; and (v) Where relevant, operation activities.	Sections 1.3
A description and identification of impact management outcomes required for the aspects contemplated above.	Sections 4 -11
A description of the proposed impact management actions, identifying the way the impact management objectives and outcomes contemplated above will be achieved and must, where applicable include actions to – (i) Avoid, modify, remedy control or stop any action, activity or process which causes pollution or environmental degradation; (ii) Comply with any prescribed environmental management standards or practises; (iii) Comply with any applicable provisions of the Act regarding closure, where applicable; and	Sections 4 – 11

- 1 The environmental impact management outcomes and actions associated with the Battery Energy Storage systems need only be undertaken at a stage when such infrastructure is developed.

Requirement	Description
(iv) Comply with any provisions of the Act regarding financial provisions for rehabilitation, where applicable.	
The method of monitoring the implantation of the impact management actions contemplated above.	Sections 4 – 11 and section 14
The frequency of monitoring the implementation of the impact management actions contemplated above.	Sections 4 – 11 and section 14
An indication of the persons who will be responsible for the implementation of the impact management actions.	Sections 4 – 11
The time periods within which the impact management actions must be implemented.	Sections 4 – 11 and section 14
The mechanism for monitoring compliance with the impact management actions.	Section 2 and 4-11
A program for reporting on compliance, considering the requirements as prescribed in the Regulations.	Section 2
An environmental awareness plan describing the way – (i) The applicant intends to inform his or her employees of any environmental risk which may result from their work; and  (ii) Risks must be dealt with in order to avoid pollution or the degradation of the environment.	Section 5.2
Any specific information that may be required by the competent authority.	None.

# Revision 1 – ENVIRONMENTAL MANAGEMENT PROGRAMME – Midas Battery Energy Storage Facility

in terms of the

National Environmental Management Act, 1998 (Act No. 107 of 1998), as amended & Environmental Impact  
Regulations 2014

## Midas Battery Energy Storage Facility

Portion 10 of the Farm Uitval 280.

Submitted for:

### Departmental Review

This report is the property of the Author/Company, who may publish it, in whole, provided that:

- Written approval is obtained from the Author and that *Cape EAPrac* is acknowledged in the publication;
- *Cape EAPrac* is indemnified against any claim for damages that may result from any publication of specifications, recommendations or statements that is not administered or controlled by *Cape EAPrac*;
- The contents of this report, including specialist/consultant reports, may not be used for purposes of sale or publicity or advertisement without the prior written approval of *Cape EAPrac*;
- *Cape EAPrac* accepts no responsibility by the Applicant/Client for failure to follow or comply with the recommended programme, specifications or recommendations contained in this report;
- *Cape EAPrac* accepts no responsibility for deviation or non-compliance of any specifications or recommendations made by specialists or consultants whose input/reports are used to inform this report; and
- All figures, plates and diagrams are copyrighted and may not be reproduced by any means, in any form, in part or whole without prior written approved from *Cape EAPrac*.

Report Issued by:

Cape Environmental Assessment Practitioners

**Tel:** 044 874 0365

PO Box 2070

**Fax:** 044 874 0432

17 Progress Street

**Web:** [www.cape-eaprac.co.za](http://www.cape-eaprac.co.za)

George 6530

## ORDER OF REPORT

Environmental Management Programme Revision 1 – Main Report

<b>Appendix A</b>	:	Site Layout Plan – Midas Battery Energy Storage Facility
<b>Appendix C</b>	:	DFFE Generic EMPr for sub-station infrastructure (DFFE, 2019)
<b>Appendix D</b>	:	Norms Registration (to be appended once granted)
<b>Appendix G</b>	:	EAP Declaration and CV
<b>Appendix H</b>	:	Construction Method Statements (to be appended once approved by the ECO)
	:	
	:	
	:	
	:	
	:	
	:	
	:	

## TABLE OF CONTENTS

<b>1. INTRODUCTION.....</b>	<b>1</b>
1.1 .APPROACH TO THE EMPR .....	1
<b>1.1.1 Pre-construction Phase.....</b>	<b>1</b>
<b>1.1.2 Construction Phase .....</b>	<b>2</b>
<b>1.1.3 Operation Phase.....</b>	<b>2</b>
<b>1.1.4 Closure and Decommissioning Phase.....</b>	<b>2</b>
1.2 PURPOSE .....	2
1.3 OBJECTIVE .....	2
1.4 SCOPE .....	2
1.5 EMPR APPROVAL AND REVISIONS .....	3
1.6 CONTRACTUAL OBLIGATIONS.....	3
1.7 ORGANISATIONAL STRUCTURE AND RESPONSIBILITIES.....	3
<b>2. DOCUMENT CONTROL, REPORTING AND COMPLIANCE .....</b>	<b>8</b>
2.1 DOCUMENT CONTROL AND FILING .....	8
2.2 DOCUMENTATION TO BE AVAILABLE .....	8
2.3 WEEKLY ENVIRONMENTAL CHECKLIST.....	9
2.4 MONTHLY ENVIRONMENTAL CONTROL REPORT .....	9
2.5 ENVIRONMENTAL SITE MEETINGS.....	9
2.6 METHOD STATEMENTS .....	9
2.7 ENVIRONMENTAL INCIDENT LOG.....	10
2.8 NON-COMPLIANCE.....	11
2.9 CORRECTIVE ACTION RECORDS.....	11
2.10 PHOTOGRAPHIC RECORD.....	11
2.11 COMPLAINTS REGISTER .....	12
2.12 CLAIMS FOR DAMAGES.....	12
2.13 INTERACTIONS WITH AFFECTED PARTIES.....	12
2.14 ENVIRONMENTAL AUDITS .....	13
<b>3. LEGISLATIVE AND POLICY FRAMEWORK.....</b>	<b>13</b>
<b>4. PRE-CONSTRUCTION PHASE– IMPACT MANAGEMENT OUTCOMES &amp; ACTIONS.....</b>	<b>17</b>
4.1 APPOINTMENT OF PRINCIPAL ECO AND SITE ECO .....	17
4.2 PRE-CONSTRUCTION ENVIRONMENTAL COMPLIANCE WORKSHOP.....	20
4.3 PRE-CONSTRUCTION ECOLOGICAL REQUIREMENTS.....	21
4.4 WATER CONSERVATION. ....	21
<b>5. CONSTRUCTION PHASE – IMPACT MANAGEMENT OUTCOMES AND ACTIONS .....</b>	<b>22</b>

5.1	CONSTRUCTION PHASING .....	22
5.2	ENVIRONMENTAL AWARENESS AND TRAINING .....	23
5.3	DEMARCATON OF NO-GO AREAS .....	24
5.4	ESTABLISHMENT OF CONTRACTORS SITE CAMP AND TEMPORARY LAYDOWN AREA. ....	25
5.5	MANAGEMENT OF TOPSOIL .....	27
5.6	WATER SUPPLY .....	28
5.7	VEGETATION CLEARING .....	29
5.8	TRENCHING AND CABLING .....	31
5.9	FENCING.....	32
5.10	CONSTRUCTION WASTE .....	33
5.11	FUEL AND CHEMICAL STORAGE.....	35
5.12	NOISE MANAGEMENT .....	37
5.13	CONCRETE MANAGEMENT .....	38
5.14	FIRE MANAGEMENT AND PROTECTION.....	39
5.15	SANITATION .....	40
5.16	BLASTING ACTIVITIES .....	41
5.17	THEFT AND ENVIRONMENTAL CRIME .....	43
5.18	REHABILITATION AND HABITAT RESTORATION .....	44
5.19	FAUNAL MANAGEMENT .....	49
<b>6.</b>	<b>OPERATIONAL PHASE – IMPACT MANAGEMENT OUTCOMES AND ACTIONS .....</b>	<b>50</b>
6.1	OPERATIONAL WASTE .....	51
6.2	OPERATIONAL GENERAL ECOLOGY CONSIDERATIONS.....	52
6.3	GENERAL OPERATIONAL MAINTENANCE .....	53
<b>7.</b>	<b>DECOMMISSIONING PHASE – IMPACT MANAGEMENT OUTCOMES AND ACTIONS .....</b>	<b>55</b>
7.1	SCENARIO 1: TOTAL CLOSURE & DECOMMISSIONING OF BESS FACILITY.....	56
7.2	SCENARIO 2: PARTIAL DECOMMISSIONING / UPGRADE OF BESS FACILITY .....	56
<b>8.</b>	<b>MONITORING AND AUDITING .....</b>	<b>57</b>
8.1	ENVIRONMENTAL MONITORING .....	57
8.1.1	<b>Construction ECO .....</b>	<b>57</b>
8.1.2	<b>Rehabilitation and Habitat Restoration Monitoring requirements .....</b>	<b>57</b>
8.1.3	<b>Plant Rescue Monitoring Requirements.....</b>	<b>58</b>
8.2	ENVIRONMENTAL AUDITING.....	58
<b>9.</b>	<b>METHOD STATEMENTS .....</b>	<b>59</b>
9.1	METHOD STATEMENTS REQUIRED.....	59
<b>10.</b>	<b>HEALTH &amp; SAFETY .....</b>	<b>60</b>
<b>11.</b>	<b>CONTRACTORS CODE OF CONDUCT.....</b>	<b>61</b>

11.1	OBJECTIVES.....	61
11.2	ACCEPTANCE OF REQUIREMENTS .....	61
11.3	CONTRACTOR'S PRE-CONSTRUCTION OBLIGATIONS .....	62
11.4	CONTRACTOR'S OBLIGATIONS DURING CONSTRUCTION .....	62
<b>12.</b>	<b>SITE DEVELOPMENT PLAN.....</b>	<b>62</b>
<b>13.</b>	<b>PENALTIES.....</b>	<b>63</b>
13.1	PROCEDURES .....	63
13.2	OFFENCES AND PENALTIES.....	64
<b>14.</b>	<b>ABBREVIATIONS .....</b>	<b>64</b>

## FIGURES

<b>Figure 1:</b>	EMPr organisational structure during the construction phase .....	4
<b>Figure 2:</b>	EMPr organisational structure during the operation phase.....	4

## TABLES

<b>Table 1:</b>	Guide to roles and responsibilities for implementation of an EMPr .....	4
<b>Table 2:</b>	Compliance with Section 24N of NEMA .....	13
<b>Table 3:</b>	Compliance with Appendix 4 of the 2014 NEMA EIA Regulations (as amended on 7 April 2017).....	15
<b>Table 4:</b>	Legislation applicable to the Midas Battery Energy Storage Facility.....	<b>Error! Bookmark not defined.</b>
<b>Table 5:</b>	Contents of an audit report.....	58
<b>Table 6:</b>	EMPr Sections applicable to SLP Components .....	62

# DRAFT EMPR – MIDAS BATTERY ENERGY STORAGE FACILITY

## 1. INTRODUCTION

**Cape EAPrac** has been appointed by the Applicant, Midas BESS (Pty) Ltd, as the independent **Environmental Assessment Practitioner (EAP)** responsible for compilation of the **Environmental Management Programme (EMPr)** for the proposed Midas Battery Energy Storage Facility.

This EMPr is submitted in compliance with the National Environmental Management Act (NEMA, Act 107 of 1998, as amended).

The key purpose of this EMPr is to ensure that the remedial and mitigation requirements identified during the Norms Registration Process (and associated SSVR) are adopted and implemented by the Holder of the Registration for the lifecycle of the Project. The EMPr is thus a management tool used to minimise and mitigate the potential environmental impacts, while maximising the benefits.

Midas BESS (Pty) Ltd ('the Applicant') is proposing the construction of the Midas Battery Energy Storage (BESS) Facility, located on Portion 10 of the Farm Uitval No. 280, approximately 18 km east of Carletonville in the Gauteng Province. The Applicant is also proposing to utilise the existing public road on Portion 8 and Portion 10 of the Farm Uitval No. 280 to access the site.

The Midas BESS facility will have a total development footprint of up to approximately 15 ha and will have a maximum export capacity of 77 MW. The development area is situated within the Merafong City Local Municipality and the Rand West City Local Municipality. The site is accessible via existing gravel roads from the R501 and N12.

The proposed Midas BESS will cover approximately 15 ha and will include the following infrastructure:

- Solid State Battery Energy Storage System (BESS) (up to 10 ha).
- Inverters and transformers
- Site and internal access roads (up to 8m wide).
- Operation and Maintenance buildings including a gate house and security building, control centre, offices, warehouses and workshops for storage and maintenance (up to 1 ha).
- Laydown areas (3 ha temporary and 1 ha permanent).
- A 132 kV facility substation (up to 1 ha).
- 33 kV cabling between the project components and the facility substation.

It is important that this EMPr be read in conjunction with the as well as the DFFE Generic EMPr substation infrastructure.

### 1.1 .APPROACH TO THE EMPR

This EMPr addresses the environmental management of the four key phases of the project, namely:

- The design and pre-construction phase;
- The construction phase;
- The operation phase; and
- The closure and decommissioning phase.

#### 1.1.1 Pre-construction Phase

The pre-construction phase of the development refers to the final layout design considerations and the site preparation (fine-scale design and placement, survey of development site and associated

infrastructure, demarcation of no-go areas, establishment of site camp and laydown area, vegetation clearing for establishment of internal road network<sup>2</sup>).

### 1.1.2 Construction Phase

The construction phase of the development refers to the earthworks and the actual construction of the civil works (installation of the BESS, construction of internal roads, stormwater structures and auxiliary buildings and on-site substation), as well as the external infrastructure such as MV power lines, access roads and gate house. The construction phase will start with the perimeter fencing of the facility and will end with final landscaping and re-vegetation / rehabilitation of the site and surrounding areas.

### 1.1.3 Operation Phase

The operational phase commences once the facility starts providing power into the national grid (i.e., at Contractual Operation Date). There may be a stage where both construction and operation activities overlap i.e., occur on site at the same time. The operation phase included the monitoring and maintenance activities required for the efficient functioning of the facility, as well as health and integrity of the surrounding environment (e.g., removal alien vegetation, management of erosion etc.).

### 1.1.4 Closure and Decommissioning Phase

Closure and decommissioning refers to the decommissioning of the panel arrays at the end of their operational lifespan or at the end of the term of the Power Purchase Agreement (PPA). For the purpose of this report, two possible scenarios are considered, namely:

- The re-use, repair &/ upgrade of the facility for alternative power generation;
- The total decommissioning of the BESS facility.

## 1.2 PURPOSE

This EMP is relevant to the Midas Battery Energy Storage Facility, and all listed and specified activities necessary for the realisation of this project.

## 1.3 OBJECTIVE

The objective of this EMP is to prescribe project specific and generally accepted impact management outcomes and impact management actions associated with the development of the Midas Battery Energy Storage Facility.

To ensure compliance with the Conditions of the EMP, recommendations of participating specialists, the following overarching outcomes are applicable:

- To ensure the least possible damage to:
  - Existing infrastructure on and adjacent to the site;
  - Indigenous flora and fauna (biophysical environment); and
  - Water quality of surface and groundwater surrounding the site. Particularly the water quality exiting the site.
- To ensure that construction and development are undertaken with due consideration to all environmental factors; and
- Where such damage occurs, provision is made for re-instatement and rehabilitation.

## 1.4 SCOPE

---

• <sup>2</sup> The clearing of vegetation for the internal road network will likely commence during the pre-construction phase, but is considered to be a construction phase activity.

The scope of this EMPr applies to all construction, operation and decommissioning requirements for the Midas Battery Energy Storage Facility. This EMPr applies to all listed and specified activities in terms of the Registration that are necessary for the realisation of this project.

### 1.5 EMPR APPROVAL AND REVISIONS

This EMPr, once approved, is a legally binding document and contravention with this document constitutes a contravention with the Environmental Authorisation.

The supplementary plans annexed to this EMPr must be read in conjunction with this EMPr.

The EMPr may however require amendment at certain stages through the lifespan of the project. The incidences which may require the amendment of this document include:

- Changes in environmental legislation;
- Results of post-construction monitoring and audit;
- Per instruction from the competent authority; and
- Changes in technology and best practice principles.

It must be noted that any amendments to the EMPr actions that do not change the impact management outcomes or objectives may be immediately affected by the holder of the Registration and submitted in the next environmental audit report submitted in terms of the regulations. Any amendments to the impact management outcomes need to be formally approved by the competent authority before they can be effected.

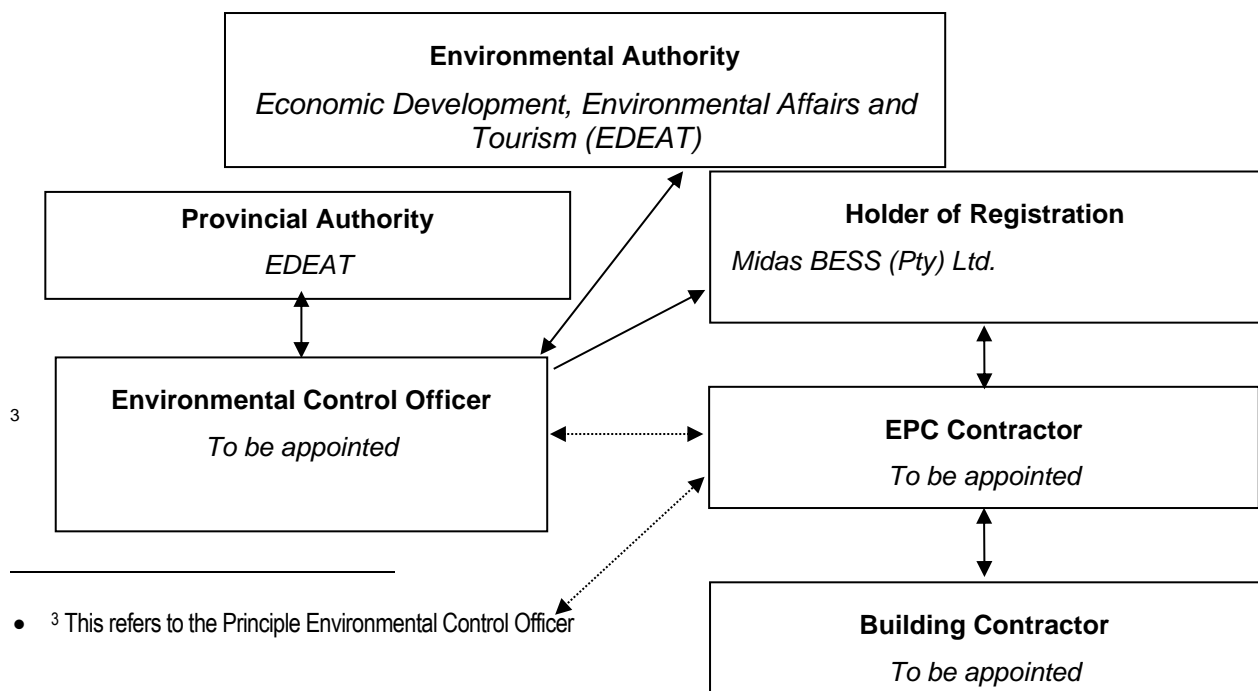
### 1.6 CONTRACTUAL OBLIGATIONS

This EMPr must be included in ALL tender and contract documentation for all phases of the Development. It must be noted that this EMPr is relevant and binding not only on the activities associated with the construction of the BESS project, but also for all associated infrastructure authorised as part of the Registration and any amendments thereto (A copy of the Registration must be attached in **Appendix E** once granted)

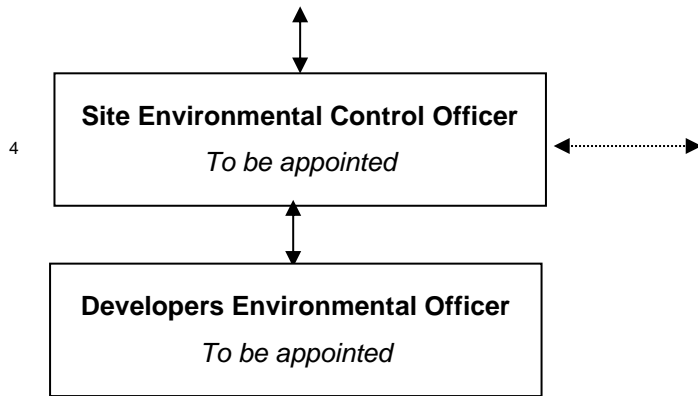
### 1.7 ORGANISATIONAL STRUCTURE AND RESPONSIBILITIES.

In order to ensure effective implementation of the EMPr, it is necessary to identify and define the organisational structure for the implementation of this document.

The proposed organisational structure during **construction** is as follows:

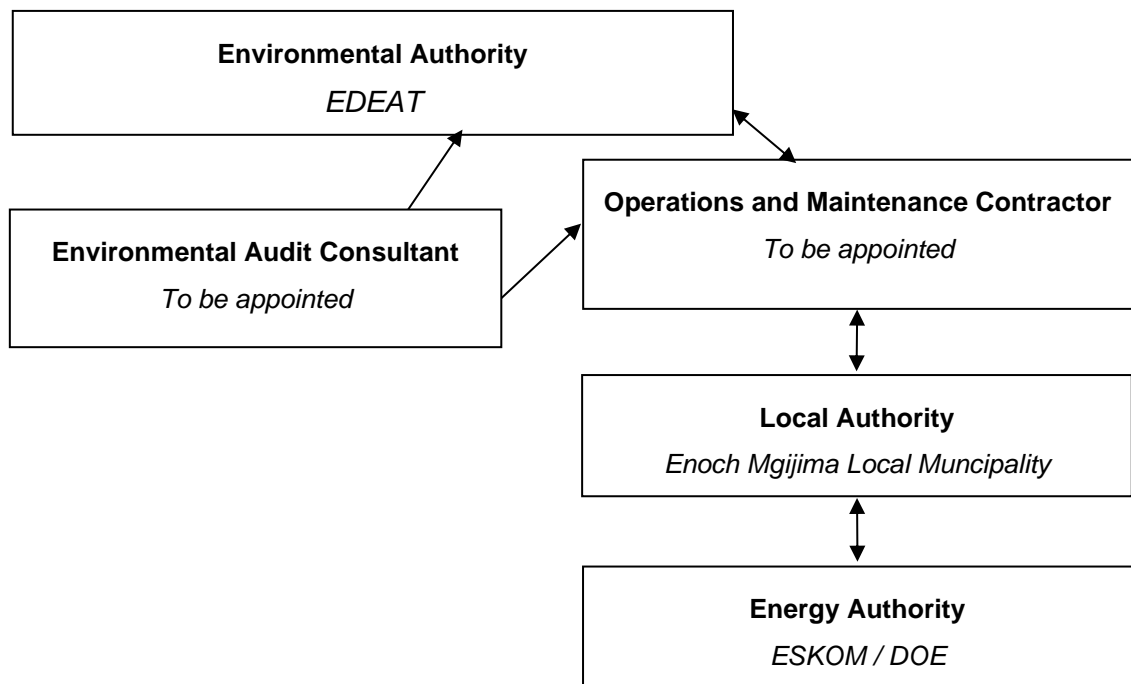


• <sup>3</sup> This refers to the Principle Environmental Control Officer



**Figure 1:** EMPr organisational structure during the construction phase

The proposed organisational structure during the **operation** of the facility is as follows:



**Figure 2:** EMPr organisational structure during the operation phase.

Details regarding the roles and responsibilities of the various parties in these organisational structures are included in the table below.

The effective implementation of this EMPr is dependent on established and clear roles, responsibilities and reporting lines. This table below gives guidance to the various environmental roles and reporting lines,

**Table 1:** Guide to roles and responsibilities for implementation of an EMPr

• <sup>4</sup> This refers to the Site Environmental Control Officer sometimes referred to as the Environmental Site Agent

Responsible Person(s)	Role and Responsibilities
Holder of the Registration <sup>5</sup>	<p><u>Role</u></p> <p>The holder of the Registration is ultimately accountable for ensuring compliance with the EMPr and any conditions of approval from the competent authority.</p> <p>An environmental control officer (ECO) must be contracted by the Project Developer to objectively monitor the implementation of the EMPr according to relevant environmental legislation, and the conditions of the Registration.</p> <p>The holder of the EA is further responsible for providing and giving mandate to enable the ECO to perform responsibilities and must ensure that the ECO is integrated as part of the project team while remaining independent.</p> <p><u>Responsibilities</u></p> <ul style="list-style-type: none"> <li>- Be fully conversant with the conditions of the Registration;</li> <li>- Ensure that all stipulations within the EMPr are communicated and adhered to by the EPC;</li> <li>- Issuing of site instructions to the EPC for corrective actions required;</li> <li>- Monitor the implementation of the EMPr throughout the project by means of site inspections and meetings. Overall management of the project and EMPr implementation; and</li> <li>- Ensure that periodic environmental audits are undertaken on the project implementation.</li> </ul>
Principle Environmental Control Officer (ECO)	<p><u>Role</u></p> <p>The Holder of the Registration (SPV) must appoint an ECO.</p> <p>The ECO must be independent of the holder of the registration and the EPC and have appropriate training and experience in the implementation of environmental management specifications. The primary role of the ECO is to act as an independent quality controller and monitoring agent regarding all environmental concerns and associated environmental impacts. In this respect, the ECO is to conduct monthly site inspections, attend regular site meetings, pre-empt problems and suggest mitigation and be available to advise on incidental issues that arise.</p> <p>The ECO is also required to prepare internal compliance audits (in the form of the monthly control report), verifying the weekly environmental checklists submitted by the Site ECO.</p> <p>The ECO provides feedback to the Holder of the registration and the competent authority regarding all environmental matters. The EPC and the holder of the registration are answerable to the Environmental Control Officer for non-compliance with the specifications as set out in the registration and EMPr.</p> <p>The ECO provides feedback to the holder of the registration who in turn reports back to the EPC, as required. Issues of non-compliance raised by the ECO must be taken up by the holder of the registration and resolved with the Contractor as per the conditions of their contract.</p> <p>Decisions regarding environmental procedures, specifications and requirements which have a cost implication (i.e., those that are deemed to be a variation, not allowed for in the EMPr specification) must be endorsed by the Holder of the registration.</p> <p><u>Responsibilities</u></p> <p>The responsibilities of the ECO will include the following:</p> <ul style="list-style-type: none"> <li>- Be aware of the findings and conclusions of all registration conditions related to the development;</li> <li>- Be familiar with the recommendations and mitigation measures of this EMPr;</li> <li>- Manage and review all reporting undertaken by the Site ECO.</li> <li>- Be conversant with relevant environmental legislation, policies and procedures, and ensure compliance with them;</li> </ul>

- <sup>5</sup> In some cases the Holder of the EA and the EPC contractor may be the same entity, in which case this party will be responsible for the requirements outlined on both roles.

Responsible Person(s)	Role and Responsibilities
	<ul style="list-style-type: none"> <li>- Undertake regular (at least monthly) and comprehensive site inspections / audits of the construction site according to the generic EMPr and applicable licenses in order to monitor compliance as required;</li> <li>- Compilation and administration of Environmental control reports to ensure that the environmental management measures are implemented and are effective;</li> <li>- Monitoring the performance of the Contractors and ensuring compliance with the EMPr and associated Method Statements;</li> <li>- In consultation with the holder of the registration order the removal of person(s) and/or equipment which are in contravention of the specifications of the EMPr and/or environmental licenses;</li> <li>- Liaison between the Holder of the Registration, EPC contractor, authorities and other lead stakeholders on all environmental concerns;</li> <li>- Compile a monthly environmental control report highlighting any non-compliance issues as well as satisfactory or exceptional compliance with the EMPr;</li> <li>- Validating the weekly environmental checklists, which are to be prepared by the site ECO;</li> <li>- Checking the Site ECO's record of environmental incidents (spills, impacts, legal transgressions etc.) as well as corrective and preventive actions taken;</li> <li>- Checking the EPC's public complaints register in which all complaints are recorded, as well as action taken;</li> <li>- Assisting in the resolution of conflicts;</li> <li>- In case of non-compliances, the ECO must first communicate this to the Senior Site personal, who has the power to ensure this matter is addressed. Should no action or insufficient action be taken, the ECO may report this matter to the authorities as non-compliance;</li> <li>- Maintenance, update and review of the EMPr;</li> <li>- Communication of all modifications to the EMPr to the relevant stakeholders</li> <li>- Review and approval contractors method statements.</li> </ul> <p>Furthermore.</p> <ol style="list-style-type: none"> <li>1. The ECO must be appointed before commencement of any authorised activities.</li> <li>2. Once appointed, the name and contact details of the ECO must be submitted to the Director: Compliance Monitoring of the Department.</li> <li>3. The ECO must keep record of all activities on site, problems identified, transgressions noted and a schedule of tasks undertaken by the ECO.</li> <li>4. The ECO must remain employed until all rehabilitation measures, as required for implementation due to construction damage, are completed and the site is ready for operation.</li> </ol>
<p>Site Environmental Control Officer<sup>6</sup></p>	<p><u>Role</u></p> <p>The Holder of the Registration or the EPC must appoint an independent Site ECO in terms of this EMPr.</p> <p>The Site ECO must be independent of the holder of the Registration and the EPC, report directly to the ECO and have appropriate training and experience in the implementation of environmental management specifications.</p> <p>The primary role of the Site ECO is to act as a full-time independent quality controller and monitoring agent regarding all environmental concerns and associated environmental impacts.</p> <p>In this respect, the Site ECO is to conduct daily site inspections, attend regular site meetings, pre-empt problems and suggest mitigation and be available to advise on incidental issues that arise.</p> <p>The Site ECO is also required to undertake internal compliance audits (in the form of the weekly environmental checklist) and submit these to the ECO and the EPC contractor.</p> <p>The site ECO provides feedback to the ECO, who in turn communicates with the holder of the registration and the competent authority regarding all environmental matters.</p>

• <sup>6</sup> To ensure consistency and integration between the roles of Principal Environmental Control Officer and Site Environmental Control Officer – these two parties should be employed by the same environmental consultancy.

Responsible Person(s)	Role and Responsibilities
	<p>Decisions regarding environmental procedures, specifications and requirements which have a cost implication (i.e., those that are deemed to be a variation, not allowed for in the EMPr specification) must be endorsed by the Holder of the registration.</p> <p><u>Responsibilities</u> The responsibilities of the Site ECO will include the following:</p> <ul style="list-style-type: none"> <li>- Daily environmental monitoring</li> <li>- Be aware of the findings and conclusions of all registration conditions related to the development;</li> <li>- Be familiar with the recommendations and mitigation measures of this EMPr;</li> <li>- Report to the ECO.</li> <li>- Be conversant with relevant environmental legislation, policies and procedures, and ensure compliance with them;</li> <li>- Compilation and administration of weekly environmental checklists to ensure that the environmental management measures are implemented and are effective;</li> <li>- Monitoring the performance of the Contractors and ensuring compliance with the EMPr and associated Method Statements;</li> <li>- Environmental induction of all staff entering the site to perform duties;</li> <li>- Maintaining a record of environmental incidents (spills, impacts, legal transgressions etc.) as well as corrective and preventive actions taken;</li> <li>- Assisting in the resolution of conflicts;</li> <li>- Reporting non-compliances to the ECO;</li> <li>- Facilitate environmental training for all personnel on the site – this may range from carrying out the training, to reviewing the training programmes of the EPC contractor;</li> </ul>
<p>Developer / Contractor Environmental Officer (dEO)</p>	<p><u>Role</u> The dEO is an in-house person working directly for the contractor / subcontractor. The dEOs will report to the Project Manager and are responsible for the day-to-day implementation of the EMPr, environmental monitoring and reporting, providing environmental input to the Project Manager and Contractor's Manager, liaising with contractors and the landowners as well as a range of environmental coordination responsibilities.</p> <p><u>Responsibilities</u></p> <ul style="list-style-type: none"> <li>- Be fully conversant with the EMPr;</li> <li>- Be familiar with the recommendations and mitigation measures of this EMPr, and implement these measures;</li> <li>- Ensure that all stipulations within the EMPr are communicated and adhered to by the Employees, Contractor(s);</li> <li>- Confine the development site to the demarcated area;</li> <li>- Conduct environmental internal audits with regards to EMPr and registration;</li> <li>- Assist the contractors in addressing environmental challenges on site;</li> <li>- Assist in incident management:</li> <li>- Reporting environmental incidents to developer and ensuring that corrective action is taken, and lessons learnt shared;</li> <li>- Assist the contractor in investigating environmental incidents and compile investigation reports;</li> <li>- Follow-up on pre-warnings, defects, non-conformance reports;</li> <li>- Measure and communicate environmental performance to the Contractor;</li> <li>- Conduct environmental awareness training on site together with Site ECO;</li> <li>- Ensure that the necessary legal permits and / or licenses are in place and up to date;</li> <li>- Acting as EPC Environmental Representative on site and work together with the ECO and site ECO;</li> </ul>
<p>EPC Contractor</p>	<p><u>Role</u> The Contractor or any relevant subcontractor has overall responsibility for ensuring that all work, activities, and actions linked to the delivery of the contract are in line with the EMPr</p>

Responsible Person(s)	Role and Responsibilities
<p><b>NB:</b> All references to the EPC contractor will include all sub-contractors responsible for any tasks in respect of the development. All Environmental Management Actions allocated to the EPC contractor will apply equally to all sub-contractors responsible for any specific task.</p>	<p>and that Method Statements are implemented as described. External contractors must ensure compliance with this EMPr while performing the onsite activities as per their contract with the Project Developer. The contractors are required, where specified, to provide Method Statements setting out in detail how the impact management actions contained in the EMPr will be implemented during the development of this facility.</p> <p><u>Responsibilities</u></p> <ul style="list-style-type: none"> <li>- project delivery and quality control for the development services as per appointment;</li> <li>- employ a suitably qualified person to monitor and report to the Project Developer's appointed person on the daily activities on-site during the construction period;</li> <li>- ensure that safe, environmentally acceptable working methods and practices are implemented, and that equipment is properly operated and maintained, to facilitate proper access and enable any operation to be carried out safely;</li> <li>- attend on site meeting(s) prior to the commencement of activities to confirm the procedure and designated activity zones;</li> <li>- ensure that contractors' staff repair, at their own cost, any environmental damage as a result of a contravention of the specifications contained in EMPr, to the satisfaction of the ECO.</li> </ul>

## 2. DOCUMENT CONTROL, REPORTING AND COMPLIANCE

To ensure accountability and effective implementation of the EMPr, a number of reporting systems<sup>7</sup>, documentation controls and compliance mechanisms must be in place for all project infrastructure as a minimum requirement.

### 2.1 DOCUMENT CONTROL AND FILING

The holder of the registration is solely responsible for the upkeep and management of the official EMPr file. As a minimum, all documentation detailed below will be stored in the EMPr file. A hard copy of all documentation shall be filed, while an electronic copy may be kept where relevant. A duplicate file will be maintained by the ECO. The EMPr file must be on site and available at all times on request by the Competent Authority or other relevant authorities. The EMPr file will form part of any environmental audits undertaken as prescribed in the EIA Regulations.

### 2.2 DOCUMENTATION TO BE AVAILABLE

At the commencement of the project the following preliminary list of documents shall be placed in the EMPr file and be accessible at all times:

- Full copy of the signed registration from the Competent Authority in terms of NEMA, granting approval for the development;
- Copy of the EMPr as well as any amendments thereof;
- All method statements prepared by the EPC and submitted to the ECO for approval;
- All weekly checklists prepared by the Site ECO;
- All monthly ECO reports prepared by the ECO;
- Minutes and attendance register of environmental site meetings;
- Attendance registers of all environmental inductions;
- An up-to-date environmental incident log;
- A copy of all instructions or directives issued;

<sup>7</sup> These reporting systems are adapted from the various generic EMPs gazetted by the Department of Forestry, Fisheries and the Environment.

- A copy of all corrective actions signed off. The corrective actions must be filed in such a way that a clear reference is made to the non-compliance record; and
- Complaints register.

All the records relating to monitoring and auditing must be kept on site and made available for inspection to any relevant and competent authority in respect of the development.

### **2.3 WEEKLY ENVIRONMENTAL CHECKLIST**

The Site ECO is required to complete a Weekly Environmental Checklist, the format of which will be determined by the ECO, with input from the EPC and the holder of the registration.

The Site ECO is required to sign and date the checklist, retain a copy in the EMPr file and submit a copy of the completed checklist to the EPC and the ECO on a weekly basis. The EPC must utilise the weekly checklists to initiate any corrective actions detailed therein.

### **2.4 MONTHLY ENVIRONMENTAL CONTROL REPORT**

The ECO is responsible for compilation of the monthly ECO Report. The weekly checklists above will form the basis for the Monthly Environmental Control Reports and must be supplemented by the outcomes of the ECO inspection. The monthly Environmental Control Reports must be submitted to the following parties:

- The Competent Authority
- The Provincial Environmental Authority;
- Cape Nature;
- The DFFE' sub-directorate, Forestry;
- The SPV;
- The EPC; and
- All attendees of Environmental Site Meetings.

Copies of all completed Environmental Control reports must be attached as Annexures to the Environmental Audit Report.

### **2.5 ENVIRONMENTAL SITE MEETINGS<sup>8</sup>**

Minutes of the environmental site meetings shall be kept. The minutes must include an attendance register and will be attached to the Monthly Environmental Control Report that is distributed to attendees. Each set of minutes must clearly record "Matters for Attention" that will be reviewed at the next meeting.

### **2.6 METHOD STATEMENTS**

The method statements will be done in such detail that the ECO is able to assess whether the contractor's proposal is in accordance with the EMPr. Commencement of any specific activity may not commence until such time as the method statement for that activity is approved by both the ECO and the project manager.

The method statement must cover applicable details with regard to:

- development procedures;
- materials and equipment to be used;
- getting the equipment to and from site;
- how the equipment/ material will be moved while on site;
- how and where material will be stored;

---

• <sup>8</sup> The Environmental Site Meeting must form part of the project team meetings that take place on site.

- the containment (or action to be taken if containment is not possible) of leaks or spills of any liquid or material that may occur;
- timing and location of activities;
- compliance/ non-compliance with the EMP; and
- any other information deemed necessary by the ECOs.

Unless indicated otherwise by the ECO, the EPC shall provide the following method statements to the Project Manager no less than 14 calendar days prior to the commencement date of each activity:

- Site establishment – Site Camps, Lay-down or storage areas, satellite camps, infrastructure;
- Workshop or plant emergency maintenance;
- Drilling and Piling operations
- Handling, transport and storage of Hazardous Chemical Substance's;
- Vegetation management – Protected species relocation, site clearing, alien vegetation;
- Access management – Roads, gates, crossings etc.;
- Fire plan;
- Waste management – transport, storage, segregation, classification, disposal (all waste streams);
- Social interaction – complaints management, compensation claims, access to properties etc.;
- Water – use (source, abstraction and disposal), access and all related information, crossings and mitigation;
- Emergency preparedness – Spills, training, other environmental emergencies;
- Dust and noise management methodologies;
- Fauna interaction and risk management; and
- Heritage, Archaeology and Palaeontology management.

It is the prerogative of the ECO to request additional method statements for any other aspect of the proposed development.

The Site ECO and ECO shall monitor and ensure that the contractors perform in accordance with these method statements. A copy of all method statements must be kept on the EMP file and appended to the Monthly ECO report on the month following their approval.

## 2.7 ENVIRONMENTAL INCIDENT LOG

The Site ECO is required to maintain an up-to-date and current Environmental Incident Log (environmental diary). The Environmental Incident Log is a means to record all environmental incidents and/or all non-compliance events.

An environmental incident is defined as:

- Any deviation from the listed impact management actions (listed in this EMP) that is identified by the Site ECO or ECO (for example, a contractor's staff member littering or a drip tray that has not been emptied);
- Any environmental impact resulting from an action or activity by a contractor in contravention of the environmental stipulations and guidelines listed in the EMP which as a single event would have a minor impact but which if cumulative and continuous would have a significant effect (for example no toilet paper available in the ablutions); and
- General environmental information such as road kills or injured wildlife.

The Site ECO must record all environmental incidents in the Environmental Incident Log. All incidents regardless of severity must be reported to the SPV. The Log is to be kept in the EMP file (and appended to the monthly environmental control reports) and at a minimum the following will be recorded for each environmental incident:

- The date and time of the incident;

- Description of the incident;
- The name of the Contractor / subcontractor responsible;
- The significance of the incident must be noted;
- If the incident is listed as significant, a non-compliance notice must be issued, and recorded in the log;
- Remedial or corrective action taken to mitigate the incident; and
- Record of repeat minor offences by the same contractor or staff member.

## 2.8 NON-COMPLIANCE

In response to a significant incident, re-occurring incidents or unattended incidents, a non-compliance notice will be issued to the responsible contractor by the ECO via the SPV or Project Manager. The non-compliance notice will be issued in writing; a copy filed in the EMPr file and will at a minimum include the following:

- Time and date of the non-compliance;
- Name of the contractor responsible;
- Nature and description of the non-compliance;
- Recommended / required corrective action; and
- Date by which the corrective action to be completed.

The contractors shall act immediately when a notice of non-compliance is received and correct whatever is the cause for the issuing of the notice. Complaints received regarding activities on the development site pertaining to the environment shall be recorded in a dedicated register and the response noted with the date and action taken. The ECO should be made aware of any complaints. Any non-compliance with the agreed procedures of the EMPr is a transgression of the various statutes and laws that define the manner by which the environment is managed.

Failure to redress the cause shall be reported by the ECO to the Competent Authority for them to deal with the transgression, as it deems fit, including the issue of penalties as detailed in section 21 of this EMPr. The contractor is deemed not to have complied with the EMPr if, inter alia, there is a deviation from the environmental conditions, impact management outcomes and impact management actions as approved in the EMPr.

## 2.9 CORRECTIVE ACTION RECORDS

For each non-compliance notice issued, a documented corrective action must be recorded. On receiving a non-compliance notice from the Site ECO or ECO, the contractor's environmental officer will ensure that the corrective actions required take place within the stipulated timeframe. On completion of the corrective action the contractor / contractors Environmental Officer is to issue a Corrective Action Report in writing to the ECO.

If satisfied that the corrective action has been completed, the ECO are to sign-off on the Corrective Action Report and attach the report to the non-compliance notice in the EMPr file. A corrective action is considered complete once the report has been signed off by the ECO.

## 2.10 PHOTOGRAPHIC RECORD

A digital photographic record will be kept by the Site ECO. The photographic record will be used to show before, during and post rehabilitation evidence of the site as well as in cases of damages claims if they arise. Each image must be dated, include a co-ordinate and a brief description note attached. The Site ECO's photographic record must form part of the weekly Environmental Checklists.

The EPC shall:

- Allow the Site ECO and ECO access to take photographs of all areas, activities and actions.

The Site ECO and ECO shall keep an electronic database of photographic records which will include:

- Pictures of all areas designated as work areas, site camp, development sites and storage areas taken before these areas are set up;
- All bunding and fencing;
- Road conditions and road verges;
- Condition of all farm fences;
- Topsoil storage areas;
- All areas to be cordoned off during construction;
- Waste management sites;
- Ablution facilities (inside and out);
- All completed corrective actions for non-compliances;
- All required signage;
- Photographic recordings of incidents; and
- All areas before, during and post rehabilitation;

## **2.11 COMPLAINTS REGISTER**

The EPC and Site ECO shall keep a current and up-to-date complaints register. The complaints register is to be a record of all complaints received from communities, stakeholders and individuals. The Complaints Record shall:

- Record the name and contact details of the complainant;
- Record the time and date of the complaint;
- Contain a detailed description of the complaint;
- Where relevant and appropriate, contain photographic evidence of the complaint or damage (ECO / Site ECO to take relevant photographs); and
- Contain a copy of the ECO's written response to each complaint received and keep a record of any further correspondence with the complainant. The ECO's written response will include a description of any corrective action to be taken and must be signed by the Contractor, ECO and affected party. Where a damage claim is issued by the complainant, the ECO shall respond as described in below.

## **2.12 CLAIMS FOR DAMAGES**

In the event that a Claim for Damages is submitted by a community, landowner or individual, the ECO shall:

- Record the full detail of the complaint as described in above;
- The EPC will evaluate the claim and associated damage and submit the evaluation to SPV for approval;
- Following consideration by the SPV, the claim is to be resolved and settled immediately, or the reason for not accepting the claim communicated in writing to the claimant.

## **2.13 INTERACTIONS WITH AFFECTED PARTIES**

Open, transparent and good relations with affected landowners, communities and regional staff are an essential aspect to the successful management and mitigation of environmental impacts.

The ECO shall:

- Ensure that all queries, complaints and claims are dealt within an agreed timeframe<sup>9</sup>;
- Ensure that any or all agreements are documented, signed by all parties and a record of the agreement kept in the EMPr file;
- Ensure that telephone numbers to register complaints are made available to all landowners and affected parties; and
- Ensure that contact with affected parties is courteous at all times.

## 2.14 ENVIRONMENTAL AUDITS

Internal environmental audits of the activity and implementation of the EMPr must be undertaken in the form of the monthly environmental control reports. The findings and outcomes must be included in the EMPr file and submitted to the competent authority on a monthly basis.

At a minimum the monthly environmental control report is to cover the following:

- Weekly Environmental Checklists;
- Deviations and non-compliances with the checklists;
- Non-compliances issued;
- Completed and reported corrective actions;
- Environmental Monitoring;
- Results of Dust Fall out Monitoring;
- General environmental findings and actions; and
- Minutes of the Environmental Site Meetings<sup>10</sup>.

In addition to the internal environmental audit (which takes place as part of the monthly environmental control report), an external audit must be undertaken:

- Within 30 days of completion of the construction phase.
- Within 30 days of completion of the rehabilitation phase.
- Within 1 year commencement of operational activities.
- Every 5 years thereafter for the duration of the operational lifespan of the facility.

These external audits cannot be undertaken by the ECO and must be undertaken by an external audit consultant in compliance with Appendix 7 of the 2014 EIA regulations.

## 3. LEGISLATIVE AND POLICY FRAMEWORK

In terms of legislative provisions, this EMPr must satisfy:

- Section 24N of the NEMA, as amended;
- Appendix 4 of the NEMA EIA Regulations published in Government Notice No. R 326 of 7 April 2017. These regulations regulate and prescribe the content of the EMPr and specify the type of supporting information that must accompany the submission of the report to the authorities; and
- Gazetted generic EMPs for the substation infrastructure.

**Table 2:** Compliance with Section 24N of NEMA

Requirements of Section 24N of NEMA	Reference in this EMPr?
2. The environmental management programme must contain-information on any proposed management, mitigation, protection or remedial measures that will be undertaken to address the environmental impacts that have	Section 5,6 & 14 of this EMPr

- <sup>9</sup> This relates to complaints and claims of an environmental nature only and does not pertain to complaints and claims of any other nature.
- <sup>10</sup> Or minutes of general site meetings, should environmental actions form part of the site meetings.

Requirements of Section 24N of NEMA	Reference in this EMPr?
<p>been identified in a report contemplated in subsection 24(1A), including environmental impacts or objectives in respect of:</p> <ul style="list-style-type: none"> <li>- planning and design;</li> <li>- pre-construction and construction activities;</li> <li>- the operation or undertaking of the activity in question;</li> <li>- the rehabilitation of the environment; and</li> <li>- closure, if applicable;</li> </ul>	
<p>Details of the person who prepared the environmental management programme; and the expertise of that person to prepare an environmental management programme;</p>	<p>Please refer to the summary page at the beginning of this report for these details.</p>
<p>A detailed description of the aspects of the activity that are covered by the environmental management programme;</p>	<p>Section 1.8</p>
<p>Information identifying the persons who will be responsible for the implementation of the measures contemplated in paragraph (a);</p>	<p>Columns in Section 5,6 and 14 of the EMPr detail the monitoring responsibility.</p>
<p>Information in respect of the mechanisms proposed for monitoring compliance with the environmental management programme and for reporting on the compliance;</p>	<p>Section 5, 6, 14 and 16</p>
<p>As far as is reasonably practicable, measures to rehabilitate the environment affected by the undertaking of any listed activity or specified activity to its natural or predetermined state or to a land use which conforms to the generally accepted principle of sustainable development; and</p>	<p>Section 8</p>
<p>A description of the manner in which it intends to-</p> <ul style="list-style-type: none"> <li>- modify, remedy, control or stop any action, activity or process which causes pollution or environmental degradation;</li> <li>- remedy the cause of pollution or degradation and migration of pollutants; and</li> <li>- comply with any prescribed environmental management standards or practices.</li> </ul>	<p>Section 1.2 to 1.4</p>
<p>3. The environmental management programme must, where appropriate-</p> <ul style="list-style-type: none"> <li>- set out time periods within which the measures contemplated in the environmental management programme must be implemented;</li> <li>- contain measures regulating responsibilities for any environmental damage, pollution, pumping and treatment of polluted or extraneous water or ecological degradation which may occur inside and outside the boundaries of the operations in question; and</li> <li>- develop an environmental awareness plan describing the manner in which-</li> <li>- the applicant intends to inform his or her employees of any environmental risk which may result from their work; and</li> <li>- risks must be dealt with in order to avoid pollution or the degradation of the environment.</li> </ul>	<p>Sections 3 – 14 all contain the timeframes for the associated measures.</p>
<p>5. The Minister, the Minister responsible for mineral resources or an MEC may call for additional information and may direct that the environmental management programme in question must be adjusted in such a way as the Minister, the Minister responsible for mineral resources or the MEC may require.</p>	<p>Not applicable at this stage.</p>
<p>6. The Minister, the Minister responsible for mineral resources or an MEC may at any time after he or she has approved an application for an environmental authorisation approve an amended environmental management programme.</p>	<p>Not applicable at this stage.</p>
<p>7. The holder and any person issued with an environmental authorisation-</p> <ul style="list-style-type: none"> <li>- must at all times give effect to the general objectives of integrated environmental management laid down in section 23;</li> <li>- must consider, investigate, assess and communicate the impact of his or her prospecting or mining on the environment;</li> <li>- must manage all environmental impacts</li> <li>- in accordance with his or her approved environmental management programme, where appropriate; and</li> <li>- as an integral part of the prospecting or mining, exploration or production operation, unless the Minister responsible for mineral resources directs otherwise;</li> </ul>	<p>Throughout the EMPr</p>

Requirements of Section 24N of NEMA	Reference in this EMPr?
<ul style="list-style-type: none"> <li>- must monitor and audit compliance with the requirements of the environmental management programme;</li> <li>- must, as far as is reasonably practicable, rehabilitate the environment affected by the prospecting or mining operations to its natural or predetermined state or to a land use which conforms to the generally accepted principle of sustainable development; and</li> <li>- is responsible for any environmental damage, pollution, pumping and treatment of polluted or extraneous water or ecological degradation as a result of his or her operations to which such right, permit or environmental authorisation relates.</li> </ul>	
8. Notwithstanding the Companies Act, 2008 (Act No. 71 of 2008), or the Close Corporations Act, 1984 (Act No. 69 of 1984), the directors of a company or members of a close corporation are jointly and severally liable for any negative impact on the environment, whether advertently or inadvertently caused by the company or close corporation which they represent, including damage, degradation or pollution.	Section 1.7 details the responsibility of the Project Applicant.

**Table 3:** Compliance with Appendix 4 of the 2014 NEMA EIA Regulations (as amended on 7 April 2017)

Requirement	Description
Details of the EAP who prepared the EMPr; and; The expertise of the EAP to prepare an EMPr, including a curriculum vitae.	This EMPr was prepared by Dale Holder of Cape EAPrac who has more than 20 years' experience as an Environmental Assessment Practitioner. The CV of the EAP is attached in appendix I.
A detailed description of the aspects of the activity that are covered by the EMPr as identified by the project description.	This EMP covers all aspects of the project as currently proposed.
A map at an appropriate scale which superimposes the proposed activity, its associated structures, and infrastructure on the environmental sensitivities of the preferred site, indicating any areas that should be avoided, including buffers	The Site Development Plan attached in Appendix A, includes the sensitive features identified by participating specialists and indicates how these have been incorporated. The "exclusion areas" identified on this SDP as well as all areas outside of the perimeter fencing of the facility are considered as no go areas for construction activities.
A description of the impact management objectives, including management statements, identifying the impacts and risks that need to be avoided, managed and mitigated as identified through the environmental impact assessment process for all the phases of the development including – (vi) Planning and design; (vii) Pre-construction activities; (viii) Construction activities; (ix) Rehabilitation of the environment after construction and where applicable post closure; and (x) Where relevant, operation activities.	Sections 1.3
A description and identification of impact management outcomes required for the aspects contemplated above.	Sections 4 -11
A description of the proposed impact management actions, identifying the way the impact management objectives and outcomes contemplated above will be achieved and must, where applicable include actions to –	Sections 4 - 11

Requirement	Description
(v) Avoid, modify, remedy control or stop any action, activity or process which causes pollution or environmental degradation; (vi) Comply with any prescribed environmental management standards or practises; (vii) Comply with any applicable provisions of the Act regarding closure, where applicable; and (viii) Comply with any provisions of the Act regarding financial provisions for rehabilitation, where applicable.	
The method of monitoring the implantation of the impact management actions contemplated above.	Sections 4 – 11 and section 14
The frequency of monitoring the implementation of the impact management actions contemplated above.	Sections 4 – 11 and section 14
An indication of the persons who will be responsible for the implementation of the impact management actions.	Sections 4 – 11
The time periods within which the impact management actions must be implemented.	Sections 4 – 11 and section 14
The mechanism for monitoring compliance with the impact management actions.	Section 2 and 4-11
A program for reporting on compliance, considering the requirements as prescribed in the Regulations.	Section 2
An environmental awareness plan describing the way – (iii) The applicant intends to inform his or her employees of any environmental risk which may result from their work; and (iv) Risks must be dealt with in order to avoid pollution or the degradation of the environment.	Section 5.2
Any specific information that may be required by the competent authority.	None.

Other than the Section 24N and Appendix 4 requirements detailed in the table above, the minimum management controls as outlined in Appendix 10 of the BESS Exclusion Norms is applicable to the project. The minimum management controls outlined in appendix 10 have been incorporated into various sections of this EMP.

## 4. PRE-CONSTRUCTION PHASE– IMPACT MANAGEMENT OUTCOMES & ACTIONS

This section provides details on the pre-construction phase impact management outcomes and actions<sup>11</sup> that are commonly applicable to the development of a BESS and its associated infrastructure as well as management actions outlined by participating specialists identified in their SSVR’s.

Each subsection includes an aspect identified for the development of a BESS, and for each aspect a set of prescribed impact management outcomes and associated impact management actions have been identified.

The holder of the registration is ultimately responsible to ensure the implementation of these outcomes and actions.

### 4.1 APPOINTMENT OF PRINCIPAL ECO AND SITE ECO

The holder of the Registration must appoint an independent Environmental Control Officer (ECO) for the construction phase of the Development<sup>12</sup>.

Impact management outcome: Independent party to ensure that the mitigation/rehabilitation. measures and recommendations referred to in the registration are implemented and to ensure compliance with the provisions of the approved EMPr						
Impact Management Actions	Responsible person	Method of implementation	Timeframe for implementation	Responsible party for monitoring	Frequency of monitoring	Evidence of compliance
<ul style="list-style-type: none"> <li>• The ECO must be appointed prior to the commencement of any physical activities.</li> <li>• The ECO will be responsible for monitoring, reviewing and verifying compliance by the EPC Contractor with the environmental specifications of this EMPr and the conditions of the registration.</li> <li>• The appointed ECO must be independent of the EPC contractor and must be suitably qualified and have experience of environmental monitoring and control on similar scale projects.</li> <li>• The main responsibilities of the ECO include but are not limited to the following:                             <ul style="list-style-type: none"> <li>- Facilitate the pre-construction environmental compliance workshop;</li> <li>- Management of the Site ECO;</li> <li>- Be fully knowledgeable of all the licences and permits issued to the site</li> <li>- Review, maintenance and update of the EMPr;</li> </ul> </li> </ul>	Holder of the Registration	The holder of the Registration to appoint independent ECO and ensure that ECO is suitably qualified and experienced.	ECO to be appointed prior to construction	ECO will undertake physical monitoring.	Monthly	The name and contact details of the appointed ECO to be submitted to the Director: Compliance Monitoring.  ECO to submit monthly Environmental Control Report to

• <sup>11</sup> All Environmental Management Actions allocated to the EPC contractor will apply equally to all sub-contractors responsible for any specific task.  
 • <sup>12</sup> It is envisioned that a single Principal ECO and single Site ECO would be appointed for the project.

<ul style="list-style-type: none"> <li>- Liaison between the Project Proponent, Contractors, Authorities and other lead stakeholders on all environmental concerns, including the implementation of the EMPr;</li> <li>- Compilation of monthly Environmental Control Report/s (ECR) to ensure compliance with the EMPr and authorisations. Reports should be submitted to the relevant authority on a monthly basis;</li> <li>- Monitor compliance with this EMPr;</li> <li>- Monitor compliance with the registration;</li> <li>- Monitor implementation of the mitigation and rehabilitation measures and recommendations referred to in the Specialist SSVR's.</li> <li>- Recommend the issuing site instructions to the EPC contractor for corrective actions required;</li> <li>- ECO site inspections should be undertaken at least once a month to ensure compliance with the EMPr. The duration of these visits may be increased or decreased at the discretion of the ECO in consultation with the holder of the Registration. The Environmental Site Agent as described below should be on site daily and be in communication with the ECO on a daily basis;</li> <li>- Attendance of regular contractors site meetings;</li> <li>- Maintain a record of environmental incidents (e.g., spills, impacts, legal transgressions etc.) as well as corrective and preventative measures taken.</li> <li>- Maintain a public complaints register in which all complaints and action taken / responses must be recorded.</li> <li>- Keep Record of all activities on site, problems identified, transgressions noted, and a task schedule of tasks undertaken by the ECO; and</li> <li>• The holder of the Registration, on advice from the ECO, has the authority to stop work on site if he / she consider that any actions of excessive non-compliance of the EMPr, authorisations or General Duty of Care are taking place.</li> <li>• The ECO must remain employed until all rehabilitation measures are completed.</li> </ul>						<p>the Director: Compliance Monitoring.</p>
--	--	--	--	--	--	---

In addition to the principal ECO, this EMPr requires the appointment of a full time independent Site ECO for the duration of the construction period of the project (this Site ECO must be appointed in the pre-construction phase, prior to the commencement of construction activities).

**Impact management outcome:** To ensure independent full time environmental expertise on site to monitor and report on compliance

Impact Management Actions	Responsible person	Method of implementation	Timeframe for implementation	Responsible party for monitoring	Frequency of monitoring	Evidence of compliance
<ul style="list-style-type: none"> <li>• The Site ECO must be appointed prior to the commencement of any physical activities.</li> <li>• The Site ECO will be responsible for daily monitoring, reviewing and verifying compliance by the EPC Contractor with the environmental specifications of this EMPr and the conditions of the Registration.</li> <li>• The appointed Site ECO must be independent of the EPC contractor and must be suitably qualified and have experience of environmental monitoring and control.</li> <li>• The main responsibilities of the Site ECO include but are not limited to the following: <ul style="list-style-type: none"> <li>- To ensure compliance with the EMPr and Registration;</li> <li>- The Site ECO is required to be on site daily, which may be reviewed by the ECO and holder of the Registration as construction requirements dictate;</li> <li>- Undertaking environmental induction of all staff;</li> <li>- Attending all on site construction meetings (including, but not limited to, technical and progress meetings);</li> <li>- Providing the ECO with a weekly environmental checklist;</li> <li>- Developing and maintaining a detailed photographic site record throughout the construction phase of the project;</li> <li>- Maintaining file records of all method statements provided by the contractors;</li> <li>- Management and ensuring timeous and effective rehabilitation of the site;</li> <li>- Maintain a record of environmental incidents (e.g., spills, impacts, legal transgressions etc.) as well as corrective and preventative measures taken. This information must also be included in the weekly reports;</li> <li>- Maintain a public complaints register in which all complaints and action taken / responses must be recorded.</li> <li>- In the event that the Site ECO observes non-compliance that requires a “stop work” order, the ECO must immediately be informed and will request the holder of the Registration to issue such an order if necessary.</li> </ul> </li> <li>• The Site ECO must remain employed until all rehabilitation measures are completed.</li> </ul>	EPC Contractor	The EPC contractor to appoint independent Site ECO and ensure that the Site ECO is suitably qualified and experienced.	The Site ECO to be appointed prior to construction	The Site ECO will undertake physical monitoring.	The Site ECO to monitor site daily and provide a formal report back weekly.	<p>The name and contact details of the appointed Site ECO to be submitted to the Director: Compliance Monitoring.</p> <p>Weekly Environmental Checklists to be provided to the EPC and the ECO.</p>

The ECO (i.e. the Principal ECO) must have a minimum of a tertiary level qualification in the natural sciences field, as well as at least 8 years' experience and proven competency as an ECO, with extensive experience on similar scale Developments.

The Site ECO (i.e. the Site ECO) must have a minimum of a tertiary level qualification, as well as at least 1 years' experience on similar scale developments and proven competency as an ECO.

## 4.2 PRE-CONSTRUCTION ENVIRONMENTAL COMPLIANCE WORKSHOP

It is a required action that a pre-construction environmental compliance workshop be undertaken before any construction commences on site.

**Impact management outcome:** To ensure that all senior contract staff members have an in-depth knowledge of the environmental requirements for the site in terms of the Registration and EMPr.

Impact Management Actions	Responsible person	Method of implementation	Timeframe for implementation	Responsible party for monitoring	Frequency of monitoring	Evidence of compliance
<ul style="list-style-type: none"> <li>• It is a required action that a pre-construction environmental compliance workshop be undertaken before any construction commences on site. This workshop can be combined with a site handover meeting but must take place before any activities take place on site and before any plant is moved onto site.</li> <li>• The purpose of this workshop is to ensure that all relevant senior personnel are familiar with the provisions of the EMPr, as well as the conditions of the Registration.</li> <li>• The following people must be present at this Environmental Compliance Workshop:               <ul style="list-style-type: none"> <li>- The holder of the Registration;</li> <li>- The ECO;</li> <li>- The EPC Contractor (including contract manager, site agent and foreman);</li> <li>- The sub-EPC contractor if appointed</li> <li>- The Electrical Contractor (including contract manager, site agent and foreman);</li> <li>- The Consulting Engineers (electrical, civil and structural, whichever applicable); and</li> <li>- Project and Asset Management.</li> </ul> </li> <li>• Provision should be made in contract and tender documentation to attend a 6-hour workshop that will be chaired by the ECO.</li> <li>• Due to covid regulations and concerns, this workshop may take place on a virtual platform.</li> </ul>	Holder of the Registration	<p>The holder of the Registration must arrange the invites to the workshop.</p> <p>ECO to present the workshop</p>	Prior to commencement of construction.	ECO	Once off.	ECO to issue minutes of the workshop, to be included in first monthly environmental control report.

### 4.3 PRE-CONSTRUCTION ECOLOGICAL REQUIREMENTS

No clearing of vegetation may take place until such time as all required permits in terms of both the provincial and national legislation are in place. Once these relevant permits are obtained, copies thereof must be submitted to the Director: Compliance Monitoring.

The EPC will be responsible for complying with any conditions contained in these permits, and a method statement must be provided to the ECO for approval.

A single integrated permit, which covers nationally or provincially listed plant species permitting requirements, as well as meets TOPS regulations, must be obtained from Cape Nature. A licence for the removal of species protected in terms of the National Forest Act may also be required.

The ECO and Site ECO should be present for the site preparation and initial clearing activities to ensure the correct demarcation of no-go areas and supervise any flora relocation and faunal rescue activities that may need to take place during the site clearing.

### 4.4 WATER CONSERVATION.

It is important that the proposed water conservation infrastructure for both the construction as well as operational phases is considered at the pre-construction phase prior to any procurement taking place.

**Impact management outcome:** To ensure design criteria promotes sustainable resource use.

Impact Management Actions	Responsible person	Method of implementation	Timeframe for implementation	Responsible party for monitoring	Frequency of monitoring	Evidence of compliance
All buildings should be fitted with rainwater collection and storage systems to supply water to the taps and toilets in these buildings, as well as any outdoor requirements (landscaping, washing etc). All toilets (excluding temporary toilets) should be fitted with dual flush systems <sup>13</sup> .	Holder of the Registration	The design engineers must consider all relevant resource conservation measures in the	Prior to commencement of construction.	ECO / Site ECO	During and on completion of all associated building	Monthly ECO Report.

- <sup>13</sup> Conservative estimates have shown that a saving of more than 22 000 litres per household (this could apply to the workshops that are occupied by day and night staff) can be achieved annually with the installation of dual flush toilets (Aquanotion, 2008).

Impact Management Actions	Responsible person	Method of implementation	Timeframe for implementation	Responsible party for monitoring	Frequency of monitoring	Evidence of compliance
<p>All taps to be installed in the control / substation / workshop buildings must be fitted with low-flow faucets.<sup>14</sup></p> <p>The design of any temporary water reservoirs for construction water should have the smallest practically possible surface area to reduce evaporation. Under no circumstances will the discharge of treated water, wastewater or effluent be allowed.</p>		design phase of the development			infrastructure on site.	

## 5. CONSTRUCTION PHASE – IMPACT MANAGEMENT OUTCOMES AND ACTIONS

This section provides details on the construction phase impact management outcomes and actions<sup>15</sup> that are commonly applicable to the development of a BESS and its associated infrastructure as well as management actions outlined by participating specialists and those contained in the registration for the facility.

Each subsection includes an aspect identified for the development of a BESS, and for each aspect a set of prescribed impact management outcomes and associated impact management actions have been identified.

The holder of the Registration is ultimately responsible to ensure the implementation of these outcomes and actions.

The signed method statements prepared by the EPC contractor to achieve these environmental management outcomes must be appended to this EMP as Appendix and kept on record in the EMP file.

### 5.1 CONSTRUCTION PHASING

There are a number of important aspects of the construction phasing that must be implemented to ensure that the potential impact on the environment is kept to a minimum. The EPC contractor must consider the following requirements regarding phasing, when developing the construction programme. This construction programme must be approved by the holder of the Registration with input from the ECO.

- The perimeter fence and road network to access the panel arrays should be established first and then all vehicular movement must be restricted to within this road network - This will minimise the impact of construction traffic on the undeveloped portion of the property.

<sup>14</sup> Low flow faucets use aerators to reduce the flow of the water. These can either be built into the faucet or added as an aftermarket product. The faucets in bathrooms should have a peak flow of less than 10 litres per minute.

<sup>15</sup> All Environmental Management Actions allocated to the EPC contractor will apply equally to all sub-contractors responsible for any specific task.

- Sites that will be temporarily disturbed by the construction activities (e.g., material loading, temporary storage, turning circles, etc.) must also be included in the road access network.

## 5.2 ENVIRONMENTAL AWARENESS AND TRAINING

It is a required action that the Site ECO, in consultation with the EPC, shall ensure that all construction workers receive an induction presentation, as well as on-going environmental education and awareness, on the importance and implications of the EMPr, the Registration and the environmental requirements they prescribe.

The Site ECO must keep records of all environmental training sessions, including names, dates and the information presented. Details of the environmental induction are also to be included in the weekly environmental checklists and monthly environmental control reports.

**Impact management outcome:** All onsite staff are aware and understand the individual responsibilities in terms of this EMPr.

Impact Management Actions	Responsible person	Method of implementation	Timeframe for implementation	Responsible party for monitoring	Frequency of monitoring	Evidence of compliance
<ul style="list-style-type: none"> <li>• All staff must receive environmental induction training prior to undertaking any activities on site;</li> <li>• The EPC contractor must provide 24h notice to the Site ECO to arrange a suitable time for the Site ECO to present the induction training;</li> <li>• Refresher environmental awareness training is available as and when required;</li> <li>• All staff are aware of the conditions and controls linked to the registration and within the EMPr and made aware of their individual roles and responsibilities in achieving compliance with the registration and EMPr;</li> <li>• The EPC contractor must erect and maintain information posters at key locations on site, and the posters must include the following information as a minimum:                             <ul style="list-style-type: none"> <li>- Safety notifications;</li> <li>- Faunal Occurrences and risks;</li> <li>- Photographic plates of all listed and protected flora;</li> <li>- Hydrocarbon Spill management and correction and</li> <li>- Waste Management.</li> </ul> </li> <li>• Environmental awareness training must include as a minimum the following:</li> </ul>	EPC Contractor and Site ECO	Site ECO to present a pre-prepared environmental induction to all staff prior to them undertaking any activities on site.  EPC to ensure that all environmental awareness posters are in place at a minimum of 2 locations on site and that these posters are maintained.	Throughout construction period	Site ECO	Weekly as part of the weekly environmental checklist.	Signed environmental induction attendance registers to be appended to weekly environmental checklist and monthly environmental control report.

Impact Management Actions	Responsible person	Method of implementation	Timeframe for implementation	Responsible party for monitoring	Frequency of monitoring	Evidence of compliance
<ul style="list-style-type: none"> <li>- Description of significant environmental impacts, actual or potential, related to their work activities;</li> <li>- Mitigation measures to be implemented when carrying out specific activities;</li> <li>- Environmental emergency preparedness and response procedures;</li> <li>- No Go Areas</li> <li>- Procedures to be followed when working near or within sensitive areas;</li> <li>- Wastewater management procedures;</li> <li>- Water usage and conservation;</li> <li>- Solid waste management procedures;</li> <li>- Sanitation procedures;</li> <li>- Fire prevention;</li> <li>- Faunal conflicts and</li> <li>- Vegetation management and protected &amp; listed flora.</li> <li>• The EPC contractor must provide translation services to Ensure that the environmental induction be translated into the relevant languages.</li> </ul>		Site ECO to attend toolbox talks at least once a week, where an environmental topic is presented (this topic should be linked to current environmental concerns on the site at that particular stage)				

### 5.3 DEMARCATION OF NO-GO AREAS

All areas outside of the physical development footprint are to be demarcated as no-no go areas and access to these areas restricted. All construction activities must be restricted to demarcated areas to restrict the impact on sensitive environmental features. The impact management actions detailed below will help in achieving this end.

**Impact management outcome:** To ensure the protection of all the natural areas, sensitive features and buffer areas outside of the physical development footprint

Impact Management Actions	Responsible person	Method of implementation	Timeframe for implementation	Responsible party for monitoring	Frequency of monitoring	Evidence of compliance
<ul style="list-style-type: none"> <li>The exact footprint of the construction area, including panel foundations and all roads (including access, haul and internal roads which must make use of the final road layout) and infrastructure are to be surveyed and pegged before any physical construction commences on site.</li> <li>In order to ensure effective demarcation of no-go areas, the construction of the perimeter fence should be the first activity that takes place on site.</li> <li>All sensitive features as identified by specialists or ECO within the footprint must be demarcated for exclusion.</li> <li>Appropriate signage is to be placed at all No-Go Areas.</li> <li>The contractor, in conjunction with the ECO, must walk the areas determined and mark the full extent of the area to be disturbed (allowing sufficient space for the construction activity);</li> <li>All areas beyond these demarcated areas are considered as “no-go” areas;</li> <li>Construction staff must be briefed as part of the environmental induction on the requirements regarding the no-go areas; and</li> <li>Any protected trees or plants that are to remain within the development footprint are to be physically demarcated.</li> </ul>	<p>EPC Contractor</p>	<p>The EPC contractor to ensure that all no-go demarcations are in place and maintained for the duration of the contract.</p> <p>The Site ECO to ensure that compliance with the no-go policy forms part of the environmental induction.</p> <p>Site ECO to monitor compliance with no-go areas.</p>	<p>Survey and pegging to commencement of construction.</p> <p>Formal perimeter fence to be constructed in parallel to site establishment</p>	<p>Site ECO / ECO</p>	<p>Daily</p>	<p>Weekly environmental checklists.</p> <p>Monthly environmental control reports.</p>

**5.4 ESTABLISHMENT OF CONTRACTORS SITE CAMP AND TEMPORARY LAYDOWN AREA.**

The position of the contractors site camp and temporary laydown area must as shown in the approved site layout plan. It must be noted that the contractors site camp and laydown area are temporary areas for use during the duration of construction. These areas must be rehabilitated on completion of construction as detailed in section 5.20 below. A permanent laydown area not exceeding 1 Hectare may remain for the duration of the operational phase of the project.

**Impact management outcome:** To ensure that the high impact activities that typically take place in a contractor’s site camp / laydown area are restricted to a predefined area that does not contain any sensitive features and is rehabilitated on completion of construction.

Impact Management Actions	Responsible person	Method of implementation	Timeframe for implementation	Responsible party for monitoring	Frequency of monitoring	Evidence of compliance
<ul style="list-style-type: none"> <li>• The Contractors Site Camp and Temporary Laydown must be situated within the development area in the position identified in the approved Site Layout Plan</li> <li>• No temporary site camps will be allowed outside of the development footprint;</li> <li>• Any necessary plant rescue within the site camp and laydown area must be undertaken prior to the stripping of topsoil.</li> <li>• Topsoil from the site camp and laydown area must be stripped and stockpiled for re-use during rehabilitation. This must be done prior to levelling and placement of gravel;</li> <li>• The site camp must be suitably fenced off;</li> <li>• All construction material must be stored in the site camp and laydown area unless otherwise approved by the ECO;</li> <li>• No personnel may overnight in the site camp, except in the case of security personnel;</li> <li>• Fires for cooking and/or heating are only allowed within the site camp after consultation with the Health and Safety Representative;</li> <li>• Fuel and other chemicals may only be stored in the camp site;</li> <li>• Storage of waste and waste management must take place within the site camp and must be removed on a regular basis.</li> <li>• Temporary waste pick up points in the field must be moved to the site camp on a daily basis;</li> <li>• The site camp must be provided with sufficient ablution facilities (chemical toilets and potable water) of which the content must be disposed of regularly and at the suitable facilities.;</li> <li>• Any security lighting must be restricted to the Site Camp and Laydown area and no security lighting may be placed in the field;</li> <li>• All security lighting should be attached to motion sensors and be dark sky friendly<sup>16</sup>; and</li> <li>• On completion of construction, the site camp and temporary laydown area must be rehabilitated as directed. A permanent laydown area not exceeding 1ha may remain for operational use if not required.</li> </ul>	<p>EPC Contractor</p>	<p>The EPC contractor to provide method statement for site camp and temporary laydown establishment.</p> <p>The Site ECO and ECO to monitor compliance with site camp and laydown requirements.</p> <p>ECO to sign off on final rehabilitation of the site camp and temporary laydown area.</p>	<p>Site camp to be established prior to delivery of materials and plant (with the exception of plant and material required for the establishment of the perimeter fence)</p>	<p>Site ECO / ECO</p>	<p>Daily</p>	<p>Weekly environmental checklists.</p> <p>Monthly environmental control reports.</p>

• <sup>16</sup> In order to achieve this, all lighting should only be on when needed, only light the area that needs it, be no brighter than necessary, minimize blue light emissions and be fully shielded (pointing downward).

Impact Management Actions	Responsible person	Method of implementation	Timeframe for implementation	Responsible party for monitoring	Frequency of monitoring	Evidence of compliance

### 5.5 MANAGEMENT OF TOPSOIL

Topsoil from all excavations and construction activities must be salvaged and reapplied during reclamation.

In terms of best practice and for rehabilitation purposes, it is essential that at least 200mm layer of topsoil from the building and road footprints (i.e., the on-site substation, auxiliary buildings, contractor’s site camp and temporary laydown area) be stripped and stockpiled prior to the commencement of construction activities in each area.

**Impact management outcome:** To ensure that the handling of topsoil does not result in the pollution or loss of the resource.

Impact Management Actions	Responsible person	Method of implementation	Timeframe for implementation	Responsible party for monitoring	Frequency of monitoring	Evidence of compliance
<ul style="list-style-type: none"> <li>• A minimum 200mm layer of topsoil must be stripped from the access, internal and perimeter roads, on-site substation, auxiliary buildings, contractors site camp and temporary laydown area;</li> <li>• The topsoil stockpile sites must be situated in the areas designated for this purpose in the Site Layout Plans (Appendix A)</li> <li>• Any topsoil stockpiles outside of these designated areas must be approved by the ECO and may not be within any sensitive areas as defined in the original environmental assessment;</li> <li>• The topsoil stockpiles must be protected from erosion and dust as indicated by the ECO and this EMPr;</li> <li>• The topsoil stockpiles must be clearly demarcated to avoid contamination;</li> <li>• No topsoil may be mixed with subsoil;</li> <li>• No topsoil may be used as bedding material for cable trenches;</li> </ul>	EPC Contractor	<p>The EPC contractor to provide method statement for topsoil management.</p> <p>The Site ECO and ECO to advise on the placement of topsoil stockpiles.</p> <p>The Site ECO and ECO to monitor compliance.</p>	Prior to construction activities in each specific area.	Site ECO / ECO	Daily	<p>Weekly environmental checklists.</p> <p>Monthly environmental control reports.</p>

Impact Management Actions	Responsible person	Method of implementation	Timeframe for implementation	Responsible party for monitoring	Frequency of monitoring	Evidence of compliance
<ul style="list-style-type: none"> <li>The topsoil stockpiles must not exceed 2m in height and stockpiles older than 6 months must be enriched before they are re-used.</li> <li>The topsoil must be replaced into disturbed areas (road verges, cable trenches temporary laydown area and contractors site camp) on completion of construction;</li> </ul>		ECO to sign off on final rehabilitation of the site camp and temporary laydown area.				

## 5.6 WATER SUPPLY

This section is specific to water supply during the construction phase.

**Impact management outcome:** To ensure water used during construction is lawfully and sustainably utilised.

Impact Management Actions	Responsible person	Method of implementation	Timeframe for implementation	Responsible party for monitoring	Frequency of monitoring	Evidence of compliance
<ul style="list-style-type: none"> <li>The EPC contractor must ensure that all water sources utilised are lawful.</li> <li>The EPC Contractor must ensure a supply of water is available on site for sanitation, drinking, dust suppression and all construction activities.</li> <li>The EPC Contractor must ensure that water supplied for drinking water is of potable standards.</li> <li>Water used for dust suppression on gravel roads must be of a quality compliant with the General Special Effluent Standards (31/03/2009): Temperature: max.25°C, pH: between 5.5 &amp; 7.5 and conductivity: not be increased more than 15% above the intake water &amp; not exceed 250 milli-Siemens per metre (determined at 25°C).</li> <li>No chemically treated or wastewater may be used for dust suppression.</li> <li>Should any temporary water storage reservoirs need to be constructed for the purposes of construction, these must be positioned within the footprint of the</li> </ul>	EPC Contractor	<p>The EPC contractor to provide method statement for Water Supply.</p> <p>The EPC Contractor must supply records of tests undertaken on drinking water to show that it is within potable standards (these tests should be</p>	<p>Lawfulness and quality testing need to take place prior to construction.</p> <p>Remaining actions applicable for the duration of the</p>	<p>EPC Contractor to provide initial and 3 monthly quality test results to Site ECO.</p> <p>EPC Contractor to supply</p>	<p>3 Monthly for Potability tests.</p> <p>Weekly for internal testing</p>	<p>Weekly environmental checklists.</p> <p>Monthly environmental control reports.</p>

Impact Management Actions	Responsible person	Method of implementation	Timeframe for implementation	Responsible party for monitoring	Frequency of monitoring	Evidence of compliance
<p>development in a position agreed to with the ECO. Sufficient mechanisms to prevent fauna entrapment must be implemented to the satisfaction of the ECO.</p> <ul style="list-style-type: none"> <li>• Carry out Environmental Awareness Training with a discussion on water usage and conservation – This should form part of the Environmental Induction of all construction staff.</li> <li>• The EPC contractor must maintain records of all water usage (via metering and / or water tuck logs) for the duration of the construction phase.</li> </ul>		<p>done on a three-monthly basis or anytime the water source changes)</p> <p>The EPC to measure (internally) PH, TDS and Conductivity of all water sources on a weekly basis.</p>	<p>construction phase.</p>	<p>weekly tests to Site ECO.</p> <p>Water usage records to be provided by EPC contractor on a weekly basis.</p> <p>Site ECO / ECO to review results and provide recommendations.</p>		

### 5.7 VEGETATION CLEARING

The objective of mitigation for any development is to firstly avoid and minimise impacts on vegetation where possible and where these cannot be completely avoided, to compensate for the negative impacts of the development on vegetation and animal habitats, and to maximise re-vegetation and rehabilitation of disturbed areas. This section deals with the management of impacts associated with the clearing of vegetation. Please refer to the section below for details regarding the rehabilitation and restoration of affected areas after completion of the construction activities.

Loss of vegetation is an inevitable consequence of the construction of BESS, and vegetation clearing required for the laydown area, roads, buildings etc. could impact listed plant species, as well as high-biodiversity plant communities. Vegetation clearing will also lead to habitat loss for fauna and potentially the loss of sensitive faunal species, habitats and ecosystems.

Clearing of vegetation must be restricted to areas for the development and service infrastructure, and vegetation clearing must be limited to the footprint. The environmental impact management actions detailed in this section as well as those in the previous section on demarcation of no-go areas will help achieve this end.

It must be noted that no vegetation clearing may occur until such time as permits for the removal of provincially protected species as well as species protected in terms of the National Forest Act are in place. The EPC must submit a method statement outlining how they intend to comply with these permits once issued.

**Impact management outcome:** To ensure that vegetation is lawful, minimised and restricted to the development footprint.

Impact Management Actions	Responsible person	Method of implementation	Timeframe for implementation	Responsible party for monitoring	Frequency of monitoring	Evidence of compliance
<ul style="list-style-type: none"> <li>• Vegetation clearing can only commence once:                             <ul style="list-style-type: none"> <li>- All necessary permits are in place,</li> <li>- Plant Rescue has been undertaken,</li> <li>- Development footprint has been demarcated</li> </ul> </li> <li>• Vegetation clearing must be kept to a minimum and restricted to the following areas:                             <ul style="list-style-type: none"> <li>- Internal Road Network,</li> <li>- Perimeter Road,</li> <li>- Inverter / Transformer Stations,</li> <li>- Laydown Area,</li> <li>- Site Camp and</li> <li>- Building Footprints</li> </ul> </li> <li>• All areas to be cleared should be clearly demarcated, prior to the commencement of clearing activities;</li> <li>• Vegetation cleared / removed as part of the site clearing activities must be stockpiled for use during the re-vegetation and rehabilitation stage for brush-packing. The location of the vegetation stockpile can be in the same area as the topsoil stockpile, as designated in consultation with the ECO;</li> <li>• Only those individuals of protected plant species directly within the development footprint should be cleared. Those which can be safely left intact must not be disturbed;</li> <li>• Any vegetation clearing that needs to take place as part of maintenance activities (during construction and operation phases) should be done in an environmentally</li> </ul>	<p>EPC Contractor</p>	<p>The EPC contractor to provide method statement for vegetation clearing activities.</p>	<p>Throughout the duration of construction.</p>	<p>Site ECO / ECO</p>	<p>Daily</p>	<p>Weekly environmental checklists.  Monthly environmental control reports.</p>

Impact Management Actions	Responsible person	Method of implementation	Timeframe for implementation	Responsible party for monitoring	Frequency of monitoring	Evidence of compliance
friendly manner, using the most effective methodology suited to the target species (herbicides and/or manual clearing).						

### 5.8 TRENCHING AND CABLING

Electric cables required to connect the inverters to the on-site switching station (i.e., AC cables) within the boundaries of the development must be installed underground, within or parallel to the internal road network and/or paths between the panel rows, as far as possible. There will also be limited trenching associated with the DC cabling (although the majority of this will be aboveground – mounted to the panel arrays.)

Cable trench excavation, cable laying and backfill must be carried out in a systematic and continuous operation, minimising the length of trench open at any one time in order to reduce the risk of runoff or faunal entrapment. Cable trenches must be backfilled in such a manner as to prevent the trench from acting as a ditch or a conduit for water flow.

Foundations and trenches must be backfilled with originally excavated materials as much as possible. Excess excavation materials must be lawfully disposed of, or if suitable, stockpiled for use in rehabilitation activities.

**Impact management outcome:** To ensure that trenching activities are spatially restricted and do not result in loss or contamination of topsoil resources.

Impact Management Actions	Responsible person	Method of implementation	Timeframe for implementation	Responsible party for monitoring	Frequency of monitoring	Evidence of compliance
<ul style="list-style-type: none"> <li>Trenching shall be kept to a minimum through the use of single trenches for multiple service provision (including communication cabling and AC cabling in the same trenches);</li> <li>Open trenches to be closed as quickly as possible to prevent faunal entrapment and erosion;</li> <li>The planning and selection should be done in approximation to the SDP and cognisance shall be given to minimising the potential for soil erosion;</li> </ul>	EPC Contractor	The EPC contractor to provide method statement trenching activities.	Throughout the construction phase	Site ECO and ECO	Daily	Weekly environmental checklists.  Monthly environmental control reports.

Impact Management Actions	Responsible person	Method of implementation	Timeframe for implementation	Responsible party for monitoring	Frequency of monitoring	Evidence of compliance
<ul style="list-style-type: none"> <li>• Trench routes with permitted working areas shall be clearly defined and marked with prior to excavation;</li> <li>• The stripping and separation of topsoil and subsoil shall occur on separate sides of the excavated trench and replaced in the same order (i.e., topsoil on top);</li> <li>• Trench lengths shall be kept as short as practically possible before backfilling and compacting;</li> <li>• The ECO may require the planting of additional indigenous vegetation along trench routes in order to speed up rehabilitation (particularly in areas that may be prone to erosion);</li> <li>• Open trenches must be inspected daily for faunal entrapment (small mammals and reptiles), which are to be removed before backfilling of the trenches;</li> <li>• Trenches shall be backfilled to the same level as (or slightly higher to allow for settlement) the surrounding land surface to minimise erosion. Excess soil shall be stockpiled in an area designated by the ECO.</li> <li>• Topsoil may not be used for bedding or blanket material in trenches.</li> </ul>						

### 5.9 FENCING

During construction it will be necessary to fence in the Contractor’s Site Camp (to avoid theft of construction equipment and materials) and the Laydown Area/s (to avoid theft of infrastructure). This temporary fencing will be restricted to these areas and be removed at the end of the construction phase. The total footprint of the facility will be fenced with a permanent perimeter electrified fence in order to protect the operational assets.

Electric fencing should not have any strands within 30cm of the ground (to allow for the movement of small mammals and reptiles).

**Impact management outcome:** To ensure that fencing protects project assets and the environment while limiting impact on faunal passages.

Impact Management Actions	Responsible person	Method of implementation	Timeframe for implementation	Responsible party for monitoring	Frequency of monitoring	Evidence of compliance
<ul style="list-style-type: none"> <li>• The establishment of the perimeter fence should be the first activity that takes place on site, as this serves to demarcate the total disturbance footprint.</li> <li>• Any sensitive features within the project footprint should be temporarily fenced prior to commencement of construction (refer to above section on the demarcation of no-go areas). This temporary fencing must be replaced with permanent fencing prior to the completion of the construction phase.</li> <li>• Temporary storage ponds and topsoil stockpile should be temporarily fenced.</li> <li>• The perimeter security fencing should be constructed in a manner which allows for the passage of small and medium sized mammals, at strategic places, such as areas of dense vegetation</li> <li>• In accordance with the registration, electrified strands should not be within 30cm of the ground.</li> <li>• Only the facility itself should be fenced-off.</li> <li>• Other than the fencing around the site camp / laydown area and operational buildings. No lighting may be placed on the perimeter security fencing.</li> <li>• The final fencing plan should be submitted to the ECO for comments and approval.</li> </ul>	EPC Contractor	<p>Implementation of the actions herein.</p> <p>EPC contractor to submit final fencing plan to the ECO for approval.</p>	Throughout the construction phase	Site ECO and ECO	Daily	<p>Weekly environmental checklists.</p> <p>Monthly environmental control reports.</p>

## 5.10 CONSTRUCTION WASTE

An integrated waste management approach must be implemented that is based on waste minimisation and must incorporate reduction, recycling and re-use options where appropriate. Where solid waste is disposed of, such disposal shall only occur at a landfill licenced in terms of section 20(b) of the National Environmental Management Waste Act, 2008 (Act 59 of 2008).

It is proposed that the local municipality will provide services in terms of waste removal and sewage for the construction phase of the proposed project. However, should the municipality not have adequate capacity available for the handling of waste and sewage, then the EPC Contractor must make use of private contractors to ensure that the services are provided. The EPC Contractor must also ensure that adequate waste disposal measures are implemented by obtaining waste disposal docket / slips of all waste and sewage that is removed from site.

**Impact management outcome:** To promote an integrated waste<sup>17</sup> management approach and ensure the management of waste during the construction phase is both lawful and sustainable.

Impact Management Actions	Responsible person	Method of implementation	Timeframe for implementation	Responsible party for monitoring	Frequency of monitoring	Evidence of compliance
<ul style="list-style-type: none"> <li>• A dedicated waste management area should be set up in the contractors site camp. This waste management area must as a minimum:                             <ul style="list-style-type: none"> <li>- Be clearly demarcated and sign posted</li> <li>- Be wind and scavenger proof;</li> <li>- Include separation of waste streams (Recyclable waste, General Waste, Construction Rubble and Hazardous Waste);</li> <li>- Be maintained in a neat and tidy state with waste regularly removed.</li> </ul> </li> <li>• The EPC Contractor must provide the Site ECO with a Waste Management register / report on a weekly Basis. This register / report must include as a minimum:                             <ul style="list-style-type: none"> <li>- Records of all waste volumes for waste stream,</li> <li>- Proof of all volumes of recycling,</li> <li>- Disposal slips for all waste transported to a landfill,</li> <li>- Disposal slips for all hazardous waste,</li> </ul> </li> <li>• All hazardous waste (including chemicals, bitumen, fuel, lubricants, oils, contaminated soil from hydrocarbon spills, paints etc.) shall be disposed of at an approved / registered hazardous-waste landfill site. The Contractor shall provide disposal certificates to the ECO.</li> <li>• All Hazardous waste must be temporary stored in sealed waterproof containers and may not be stored on site for longest than 30 days.</li> <li>• Used oil and grease must be removed from site to an approved used oil recycling company.</li> <li>• Under NO circumstances may any waste be spoiled on the site.</li> <li>• Where possible, the routine maintenance of construction plant should take place off-site. Where such maintenance must occur, it must be done in the site camp on an impermeable surface with a sump to collect any oil spills.</li> </ul>	<p>EPC Contractor</p>	<p>The EPC contractor to provide method statement for waste management.</p>	<p>Throughout the construction phase</p>	<p>Site ECO and ECO.  EPC Contractor to provide records of all waste volumes and disposal slips on a weekly basis.</p>	<p>Daily</p>	<p>Weekly environmental checklists.  Monthly environmental control reports.</p>

• <sup>17</sup> Waste in this instance excludes excess overburden from excavations.

Impact Management Actions	Responsible person	Method of implementation	Timeframe for implementation	Responsible party for monitoring	Frequency of monitoring	Evidence of compliance
<ul style="list-style-type: none"> <li>Temporary waste receptacles in the field must be removed to the dedicated waste management area before the end of each working day.</li> <li>Ensure that no waste materials or sediments are left in the surrounding drainage lines (as a result of the construction).</li> <li>Wastewater must be collected and disposed of at a suitable licenced disposal facility. Proof of disposal (i.e., waste disposal slips or waybills) should be retained on file for auditing purposes</li> </ul>						

### 5.11 FUEL AND CHEMICAL STORAGE

The above ground storage of fuel is subject to authorisation in terms of the National Environmental Management Act (NEMA EIA regulations) if more than 30m³ is stored on site at any one time. The environmental authorisation for this development does not include authorisation for the storage of more than 30 cubic metres of fuel.

The temporary storage of hazardous or toxic materials / liquids (chemicals, fuels, lubricants and oils) must comply with legislation and the actions in the table below must be implemented.

**Impact management outcome:** To ensure lawful fuel storage that does not cause soil and water pollution.

Impact Management Actions	Responsible person	Method of implementation	Timeframe for implementation	Responsible party for monitoring	Frequency of monitoring	Evidence of compliance
<ul style="list-style-type: none"> <li>Temporary fuel storage must take place within the contractors site camp and laydown area in an area approved by the ECO;</li> <li>No storage of fuel may take place on any other portion of the site;</li> <li>All hazardous materials should be stored in the appropriate manner to prevent contamination of the site. Any accidental chemical, fuel and oil spills that occur at</li> </ul>	EPC Contractor	The EPC contractor to provide method statement for chemical and fuel storage.	Throughout the construction phase	Site ECO and ECO.  EPC Contractor maintain a	Daily	Weekly environmental checklists.

Impact Management Actions	Responsible person	Method of implementation	Timeframe for implementation	Responsible party for monitoring	Frequency of monitoring	Evidence of compliance
<p>the site should be cleaned up immediately in the appropriate manner, as related to the nature of the spill.</p> <ul style="list-style-type: none"> <li>• Mobile fuel units used to refuel plant on site must make use of drip trays when refuelling;</li> <li>• Storage facilities may not be located within 60m of any freshwater resources where there is a potential for any spilled fuel to enter the resource;</li> <li>• Fuel storage facilities should be located on flat ground. No cut and fill should take place immediately on or adjacent to fuel storage areas;</li> <li>• All storage tanks should be double lined and be ISO 9001 certified;</li> <li>• All storage tanks must be enclosed by bund walls;</li> <li>• Bund walls must be constructed to contain at least 110% of the total capacity of the storage tanks;</li> <li>• Bund walls must be constructed of impermeable material or lined to ensure that petroleum products cannot escape;</li> <li>• A suitable material should be placed in the base of the bund walls to soak up any accidental spillages;</li> <li>• The tanks should be locked and secured when not in use;</li> <li>• Automatic shut-off nozzles are required on all dispensing units;</li> <li>• Storage tanks should be drained within one week of completion of activities (only unused fuel can be used by the contractor on other work sites or returned to the supplier). If the construction program extends over the builder's shutdown, the contractor must ensure that storage tanks are emptied prior to this period;</li> <li>• All storage tanks, containers and related equipment should be regularly maintained to ensure safe storage and dispensing of material. The engineer is to sign off on the condition and integrity of the storage tanks;</li> <li>• Defective hoses, valves and containment structures should be promptly repaired;</li> <li>• Vehicle and equipment fuelling should be undertaken on a hard impermeable surface, over drip pans or bund walls to ensure spilled fuel or toxic liquids is captured and cleaned up;</li> <li>• The area must be totally rehabilitated on completion of the contract and all contaminated material must be carefully removed and disposed of at a licensed dumping site for that purpose; and</li> </ul>				fuel and chemical register and provide this to the ECO on a monthly basis.		Monthly environmental control reports.

Impact Management Actions	Responsible person	Method of implementation	Timeframe for implementation	Responsible party for monitoring	Frequency of monitoring	Evidence of compliance
<ul style="list-style-type: none"> <li>Spill kits must be made available on-site for the clean-up of spills. A minimum of 2 spill kits must be in the contractors site camp. Spill kits must also be available in the field within 500m of any drilling and ramming operations.</li> </ul>						

### 5.12 NOISE MANAGEMENT

Although the proposed development is located outside of an urban area, the following noise management actions are applicable to the construction phase of the development due to its proximity to farm homesteads.

The Contractor shall furthermore be responsible for compliance with the relevant legislation with respect to noise inter alia Section 25 of ECA (73 of 1989) and standards applicable to noise nuisances in the Occupational Health and Safety Act (No. 85 of 1993).

**Impact management outcome:** To ensure nuisance from noise and vibration does not occur.

Impact Management Actions	Responsible person	Method of implementation	Timeframe for implementation	Responsible party for monitoring	Frequency of monitoring	Evidence of compliance
<ul style="list-style-type: none"> <li>It is recommended that noise generation be kept to a minimum and that construction activities be confined to normal working hours (07:00 - 17:00 on Monday to Saturday). Should the Contractor wish to deviate from these work hours, approval must be granted by the Holder of the Registration,</li> <li>The following noise reduction actions in respect of plant should be implemented:                             <ul style="list-style-type: none"> <li>Provide baffle and noise screens on noisy machines as necessary;</li> <li>Provide absorptive linings to the interior of engine compartments;</li> <li>Ensure machinery is properly maintained (fasten loose panels, replace defective silencers);</li> <li>Switch off machinery immediately when not in use; and</li> <li>Reduce impact noise by careful handling.</li> </ul> </li> </ul>	EPC Contractor	As per the stated actions	Throughout the construction phase	Site ECO and ECO	Daily	Weekly environmental checklists.  Monthly environmental control reports.

### 5.13 CONCRETE MANAGEMENT

Proper concrete management is of utmost importance. Concrete works are likely to be limited to the construction of the on-site sub-station and auxiliary buildings and are not likely to be extensive (the preferred alternative for the panel support structures will make use of a technology that does not require concrete footings, due to rammed piles/earth screws/rock anchors). However, in instances where rammed piles/earth screws or rock anchors will not be practically possible and for other concrete work associated with the substation and inverter stations, the following actions in terms of concrete management should take place.

Cement powder has a high alkaline pH that may contaminate and adversely affect both soil pH and water pH negatively. A rapid change in pH can have consequences on the functioning of soil and water organisms, as well as on the botanical component.

The use of ready-mix trucks delivering concrete directly to site is recommended and mass batching of concrete on site should be limited as far as possible.

**Impact management outcome:** To ensure that the handling of concrete does not result in pollution of soil or water resources.

Impact Management Actions	Responsible person	Method of implementation	Timeframe for implementation	Responsible party for monitoring	Frequency of monitoring	Evidence of compliance
<ul style="list-style-type: none"> <li>• Trucks should deliver pre-mixed concrete to the site and pour the concrete directly into the prepared excavations.</li> <li>• When concrete trucks have unloaded, there is a requirement to wash out the inside of the concrete drum. Water can be provided to the trucks for this purpose (at the discretion of the contractor). Concrete suppliers may NOT dispose of this wash water anywhere on site. Trucks should return to their depot for this purpose.</li> <li>• Any spillages of concrete outside of the excavations (including haulage routes) must be cleaned up immediately by the supplier.</li> <li>• Where small batching of concrete or plaster takes place on site, the following actions must be implemented:                             <ul style="list-style-type: none"> <li>- Concrete batching may only take place in areas approved by the ECO (preferably in the Site Camp);</li> <li>- Concrete mixing must take place on batching plates unless it is on an area that is to be hard surfaced as part of the development;</li> <li>- Equipment (wheelbarrows, shovels etc) must be washed into a lined settling pond;</li> </ul> </li> </ul>	<p>EPC Contractor</p>	<p>The EPC contractor to provide method statement for all on site concrete batching.</p>	<p>Throughout the construction phase</p>	<p>Site ECO and ECO</p>	<p>Daily</p>	<p>Weekly environmental checklists.  Monthly environmental control reports.</p>

Impact Management Actions	Responsible person	Method of implementation	Timeframe for implementation	Responsible party for monitoring	Frequency of monitoring	Evidence of compliance
<ul style="list-style-type: none"> <li>- Once the settling ponds dry out, the concrete must be removed and dispatched to a suitable disposal site. Ideally, all concrete batching should take place on an area that is to be hard surfaced as part of the development (building floor, road or paved area);</li> <li>• In order to avoid resource contamination, concrete batching should not be located within 60m of any stormwater management structure.</li> <li>• If an area outside of the site camp is identified for batching it must first be approved by the ECO and all topsoil must be stripped and stockpiled for re-use.</li> <li>• Batching at satellite sites must be done on a batching plate to prevent soil contamination.</li> <li>• Empty cement bags must be treated as hazardous waste and must be treated accordingly.</li> <li>• Cement wash water may not be discharged into the environment.</li> </ul>						

### 5.14 FIRE MANAGEMENT AND PROTECTION

As required in the veld and fire management act, it is the landowner’s responsibility to develop and maintain firebreaks as well as be sufficiently prepared to combat veld fires. This requirement will fall on the lawful user of the land in respect of the BESSDevelopment.

The BESSdevelopment site is considered to be in an area that may from time to time have sufficient biomass to carry fires. Therefore, management of plant biomass within the site should be part of the management of the facility. Grazing by livestock is the simplest and most ecologically sound way to manage plant biomass and is recommended the preferred method to manage plant biomass at the site. Alternative management practices can include brush cutting. Utilisation of non-selective herbicides for the management of biomass is prohibited on site.

**Impact management outcome:** To reduce the risk of fire to infrastructure and environment.

Impact Management Actions	Responsible person	Method of implementation	Timeframe for implementation	Responsible party for monitoring	Frequency of monitoring	Evidence of compliance
<ul style="list-style-type: none"> <li>• Fires should only be allowed within fire-safe demarcated areas (and only within the site camp);</li> <li>• No fuelwood collection is allowed on-site;</li> <li>• The total removal of all invasive alien vegetation should take place in order to decrease the fire risk – Although there were few invasive plants identified during the environmental process, these may establish to a degree as a result of site disturbance. This must be done in accordance with the Alien Vegetation Management Plan;</li> <li>• Cigarette butts may not be thrown in the veld but must be disposed of correctly. The contractor, must designate smoking areas (in compliance with the Tobacco Products Control Amendment Act 63 of 2008) with suitable receptacles for disposal;</li> <li>• In case of an emergency, the contact details of the local fire and emergency services must be readily available;</li> <li>• Contractors must ensure that basic firefighting equipment and suitably qualified/experienced personnel are available on site at all times, as per the specifications defined by the health and safety representative / consultant;</li> <li>• The fire risk on site is a point of discussion that must take place as part of the pre-construction compliance workshop and the environmental induction training prior to commencement of construction; and</li> <li>• The contractor must also comply with the requirements of the Occupational Health and Safety Act with regards to fire protection.</li> </ul>	EPC Contractor	In compliance with the actions defined as well as requirements detailed in the health and safety plan.	Throughout the construction phase	Site ECO and ECO	Daily	Weekly environmental checklists.  Monthly environmental control reports.

### 5.15 SANITATION

The holder of the Registration / EPC must provide sanitation facilities within the construction area and along the road so that workers do not pollute the surrounding environment. These facilities must be removed from the site when the construction phase is completed. Associated waste must be disposed of at a registered waste disposal site.

**Impact management outcome:** To ensure safe and healthy sanitation for construction staff without increasing pollution risk.

Impact Management Actions	Responsible person	Method of implementation	Timeframe for implementation	Responsible party for monitoring	Frequency of monitoring	Evidence of compliance
<p>Portable chemical ablution facilities must be made available for the use by construction staff for the duration of the construction period. The following actions must be implemented in this regard:</p> <ul style="list-style-type: none"> <li>• Toilet and washing facilities must be available to the site personnel at all times (at the site camp and in the field);</li> <li>• These facilities must be situated away from freshwater resources;</li> <li>• One toilet for every 15 personnel is required;</li> <li>• The facilities must be serviced on a regular basis to prevent any overflow or spillage;</li> <li>• The servicing contractor must dispose of the waste in an approved manner (e.g., via the municipal wastewater treatment system);</li> <li>• The ECO must be provided with the service providers' details and the service schedule for the site;</li> <li>• The toilets should be secured to ensure that they do not blow over in windy conditions;</li> <li>• All toilet facilities must be removed from site on completion of the contract period, and;</li> <li>• Should the construction period be interrupted by a builder's break, the toilets should be emptied prior to the break.</li> </ul>	EPC Contractor	As per the stated actions	Throughout the construction phase	<p>Site ECO and ECO.</p> <p>The EPC Contractor to supply chemical toilet service records to the Site ECO on a weekly basis.</p>	Daily	<p>Weekly environmental checklists.</p> <p>Monthly environmental control reports.</p>

Sanitation during operation is discussed separately in the sections below.

## 5.16 BLASTING ACTIVITIES

It is likely that blasting will be required. Should blasting be required for whatever reasons, the following actions must be implemented:

**Impact management outcome:** To ensure any blasting activities do not disturb sensitive environmental nor social features.

Impact Management Actions	Responsible person	Method of implementation	Timeframe for implementation	Responsible party for monitoring	Frequency of monitoring	Evidence of compliance
<ul style="list-style-type: none"> <li>• No blasting may take place within 50m of a borehole without approval of a suitably qualified engineering geologist. Preventative mitigation actions could include installing PVC casing and screens in potentially affected boreholes before blasting, while damaged boreholes will have to be re-drilled;</li> <li>• A current and valid permit shall be obtained from the relevant authorities prior to any blasting activity;</li> <li>• A method statement shall be required for any blasting related activities;</li> <li>• All laws and regulations applicable to blasting activities shall be adhered to at all times;</li> <li>• A qualified and registered blaster shall supervise all blasting and rock splitting operations at all times;</li> <li>• The contractor shall ensure that appropriate pre-blast monitoring records are in place (i.e., photographic and inspection records of structures in close proximity to the blast area);</li> <li>• The contractor shall allow for good quality vibration monitoring equipment and record keeping on site at all times during blasting operations;</li> <li>• The contractor shall ensure that emergency services are notified, in writing, a minimum of 24 hours prior to any blasting activities commencing on site;</li> <li>• The contractor shall take necessary precautions to prevent damage to special features and the general environment, which includes the removal of fly-rock. Environmental damage caused by blasting / drilling shall be repaired at the contractor's expense to the satisfaction of the ECO;</li> <li>• The contractor shall ensure that adequate warning is provided immediately prior to all blasting. All signals shall also be clearly given;</li> <li>• The contractor shall use blast mats for cover material during blasting. Topsoil may not be used as blast cover;</li> <li>• During demolition, the contractor shall ensure, where possible, that trees in the area are not damaged;</li> <li>• Appropriate blast shaping techniques shall be employed to aid in the landscaping of blast areas, and a method statement to be approved by the Engineer, shall be required in this regard; and</li> <li>• At least one week prior to blasting, the relevant occupants/owners of surrounding land shall be notified by the contractor and any concerns addressed. Buildings</li> </ul>	EPC Contractor	The EPC contractor to provide method statement for blasting activities should they be needed.	Throughout the construction phase	Site ECO and ECO.	Daily	<p>Weekly environmental checklists.</p> <p>Monthly environmental control reports.</p>

Impact Management Actions	Responsible person	Method of implementation	Timeframe for implementation	Responsible party for monitoring	Frequency of monitoring	Evidence of compliance
<p>within the potential damaging zone of the blast shall be surveyed, preferably with the owner present and any cracks or latent defects pointed out and recorded either using photographs or video. Failing to do so shall render the contractor fully liable for any claim of whatsoever nature, which may arise. The contractor shall indemnify the employer in this regard.</p>						

### 5.17 THEFT AND ENVIRONMENTAL CRIME

An increase in crime during the construction phase is often a concern. In the case of this development, the risk is likely to be low due to the remote nature of the site. Theft and other crime associated with construction sites is not only a concern for surrounding residents, but also the developer and the contractor. Considering this, contractors need to be proactive in order to curtail theft and crime on and resulting from the construction site.

It is recommended that the contractor develop a jobsite security plan prior to commencement of construction. This jobsite security plan should take into account protection of the construction site from both internal and external crime elements, as well as the protection of surrounding communities from internal crime elements. All incidents of theft or other crime should be reported to the South African Police Service, no matter how seemingly insignificant. A copy of the jobsite security plan should be included in the first environmental control report to be submitted to the competent authority.

It is likely that the Contractor’s Site Camp and the Laydown area/s will be fenced with a temporary fence to avoid theft during construction. Additional security measures during construction may include CCTV camera surveillance and security guards.

**Impact management outcome:** To ensure that activities on site do not increase the criminal activity of the area.

Impact Management Actions	Responsible person	Method of implementation	Timeframe for implementation	Responsible party for monitoring	Frequency of monitoring	Evidence of compliance
<ul style="list-style-type: none"> <li>The following actions are relevant in this regard (refer to the section above for details of the facility permanent security fencing):</li> <li>The EPC Contractor must develop a Job Site Security Plan for the project.</li> <li>All portable construction equipment and material must be locked away within the Contractor’s Site Camp overnight and during holiday periods;</li> <li>Fuel storages tanks must be locked when not in use;</li> <li>All un-installed materials must be locked within the fenced Laydown areas overnight and during holiday periods.</li> <li>The minimum amount of lighting should be used at night and this should be of the low-UV emitting kind that attracts less insects.</li> <li>The collection, hunting or harvesting of any plants or animals at the site is strictly forbidden, and thus any person found undertaking any of these actions will be considered guilty of committing a crime. Any incidents of such crimes on nature must be reported to the ECO immediately, who will report the incident to the SAPS.</li> </ul>	EPC Contractor	Implementation of a Job site security plan to be compiled by the EPC.	Jobsite Security Plan to be prepared prior to site establishment  Throughout the construction phase	Site ECO and ECO.	Daily	Weekly environmental checklists.  Monthly environmental control reports.

**5.18 REHABILITATION AND HABITAT RESTORATION**

All areas not forming part of the development’s hard surfaces must be rehabilitated and restored on completion of construction. These include:

- The temporary laydown area (a maximum laydown of less than 1ha may for operational requirements);
- The contract site camp;
- Temporary water storage ponds;
- Overburden spoil sites;
- Temporary haul roads;
- Batching areas; and
- All other areas within the BESS and adjacent to buildings that have been compacted or impacted by any of the construction activities.

One of the primary objectives of all the previously listed impact management outcomes are to avoid and reduce impact on the receiving environment, thus minimising the rehabilitation and restoration requirements on completion of construction. The EPC contractor must be mindful of this primary objective as part of all activities taking place on site.

**Impact management outcome:** To restore habitat disturbed during construction activities

Impact Management Actions	Responsible person	Method of implementation	Timeframe for implementation	Responsible party for monitoring	Frequency of monitoring	Evidence of compliance
<p><b>Topsoil management</b></p> <ul style="list-style-type: none"> <li>• Effective topsoil management is a critical element of rehabilitation, particularly in arid and semi-arid areas where soil properties are a fundamental determinant of vegetation composition and abundance. Although some parts of the site consist of exposed bedrock, most parts of the site have at least some topsoil. Where any excavation or topsoil clearing is required, the topsoil should be stockpiled and later used to cover cleared and disturbed areas once construction activity has ceased.</li> <li>• Excess inert material and other disturbed areas should be reshaped to blend in with the natural contours of the area;</li> <li>• The contractor must be mindful that should insufficient topsoil be available for rehabilitation purposes, additional topsoil will need to be sourced from a commercial source at a cost to the contractor.</li> <li>• Topsoil is the top-most layer (0-30cm) of the soil in undisturbed areas. This soil layer is important as it contains nutrients, organic matter, seeds, micro-organisms, fungi and soil fauna. All these elements are necessary for soil processes such as nutrient cycling and the growth of new plants. The biologically active upper layer of the soil is fundamental in the maintenance of the entire ecosystem.</li> <li>• Topsoil should be retained on site in order to be used for site rehabilitation. The correct handling of the topsoil (as detailed earlier in the report) is a key element of rehabilitation success. Firstly, it is important that the correct depth of topsoil is excavated. If the excavation is too deep, the topsoil will be mixed with sterile deeper soil, leading to reduction in nutrient levels and a decline in plant performance on the soil.</li> <li>• Wherever possible, stripped topsoil should be placed directly onto an area being rehabilitated. This avoids stockpiling and double handling of the soil. Topsoil placed directly onto rehabilitation areas contains viable seed, nutrients and microbes that allow it to revegetate more rapidly than topsoil that has been in stockpile for long periods.</li> </ul>	<p>EPC Contractor</p>	<p>Implementation of the actions detailed here.</p> <p>Provision of a sufficient budget to undertake rehabilitation activities</p>	<p>Throughout the construction phase.</p> <p>Physical rehabilitation activities to be completed prior to contractual operations date.</p>	<p>Site ECO and ECO and Rehabilitation Specialist</p>	<p>Daily</p>	<p>Weekly environmental checklists.</p> <p>Monthly environmental control reports.</p>

Impact Management Actions	Responsible person	Method of implementation	Timeframe for implementation	Responsible party for monitoring	Frequency of monitoring	Evidence of compliance
<ul style="list-style-type: none"> <li>If direct transfer is not possible, the topsoil should be stored separately from other soil heaps until construction in an area is complete. The soil should not be stored for a long time and should be used as soon as possible. The longer the topsoil is stored, the more seeds, micro-organisms and soil biota are killed.</li> <li>Ideally stored topsoil should be used within a month and should not be stored for longer than three months. In addition, topsoil stores should not be too deep, a maximum depth of 1m is recommended to avoid compaction and the development of anaerobic conditions within the soil.</li> </ul> <p><b>Ripping &amp; Substrate preparation</b></p> <ul style="list-style-type: none"> <li>Before commencement with restoration activities detailed below, all identified rehabilitation areas that are compacted as a result of construction activities must be mechanically ripped.</li> <li>Imported gravel layers (such as in the laydown area and site camp) must be removed prior to ripping and commencing with rehabilitation.</li> </ul> <p><b>Mulching</b></p> <ul style="list-style-type: none"> <li>Mulching is the covering of the soil with a layer of organic matter of leaves, twigs bark or wood chips, usually chopped quite finely. The main purpose of mulching is to protect and cover the soil surface as well as serve as a source of seed for revegetation purposes.</li> <li>During site clearing the standing woody vegetation should not be cleared and burned, removed or mixed with the soil, but should be cleared separately<sup>18</sup>. The cleared vegetation should be stockpiled and used whole or shredded by hand or machine to protect the soil in disturbed areas and promote the return of indigenous species. Where there is a low shrub or grass layer, this material can be cleared and mixed as part of the topsoil (or applied as a top mulch) as this will aid revegetation and recovery when it is reapplied.</li> </ul>						

<sup>18</sup> Woody vegetation within the BESS should not be mechanically cleared, but rather slashed with a brush-cutter or by hand.

Impact Management Actions	Responsible person	Method of implementation	Timeframe for implementation	Responsible party for monitoring	Frequency of monitoring	Evidence of compliance
<ul style="list-style-type: none"> <li>• All mulch should be harvested from areas that are to be denuded of vegetation during construction activities, provided that they are free of seed-bearing alien invasive plants;</li> <li>• No harvesting of vegetation may be done outside the area to be disturbed by construction activities;</li> <li>• Brush-cut mulch should be stored for as short a period as possible, and seed released from stockpiles can also be collected for use in the rehabilitation process.</li> </ul> <p><b>Seeding</b></p> <ul style="list-style-type: none"> <li>• In some areas the natural regeneration of the vegetation may be poor and the application of seed to enhance vegetation recovery may be required as directed by the ECO.</li> <li>• Seed should be collected from plants present at the site and should be used immediately or stored appropriately and used at the start of the following wet season. Seed can be broadcast onto the soil but should preferably be applied in conjunction with measures to improve seedling survival such as scarification of the soil surface or simultaneous application of mulch.</li> <li>• Indigenous seeds may be harvested<sup>19</sup> for purposes of re-vegetation in areas that are free of alien or invasive vegetation, either at the site prior to clearance or from suitable neighbouring sites;</li> <li>• Seed may be harvested by hand and if necessary dried or treated appropriately;</li> <li>• No seed of alien or foreign species should be used or brought onto the site.</li> </ul> <p><b>Transplants</b></p> <ul style="list-style-type: none"> <li>• Where succulent plants are available or other species which may survive translocation are present, individual plants can be dug out from areas about to be cleared and planted into areas which require revegetation. This can be an effective means of establishing indigenous species quickly, this is however unlikely to be a viable option at the current site as there are few suitable species present, but if the conditions are wet then most species have some probability of surviving.</li> </ul>						

• <sup>19</sup> Any seed harvesting required must be done with the appropriate permits in place.

Impact Management Actions	Responsible person	Method of implementation	Timeframe for implementation	Responsible party for monitoring	Frequency of monitoring	Evidence of compliance
<ul style="list-style-type: none"> <li>• Plants for transplant should only be removed from areas that are going to be cleared.</li> <li>• Perennial grasses, shrubs, succulents and geophytes are all potentially suitable candidates for transplant.</li> <li>• Transplants should be placed within a similar environment from where they came in terms of aspect, slope and soil depth.</li> <li>• Transplants must remain within the site and may not be transported off the site.</li> <li>• Some species can also grow from cuttings and branches of many succulent species can be rooted in the field.</li> </ul> <p><b>Use of soil savers</b></p> <ul style="list-style-type: none"> <li>• On steep slopes (unlikely on the development site) and areas where seed and organic matter retention is low, it is recommended that soil savers are used to stabilise the soil surface. Soil savers are man-made materials, usually constructed of organic material such as hemp or jute and are usually applied in areas where traditional rehabilitation techniques are not likely to succeed.</li> <li>• In areas where soil saver is used, it should be pegged down to ensure that it captures soil and organic matter flowing over the surface.</li> <li>• Soil saver may be seeded directly once applied as the holes in the material catch seeds and provide suitable microsites for germination. Alternatively, fresh mulch containing seed can be applied to the soil saver.</li> </ul> <p><b>General recommendations</b></p> <p>Progressive rehabilitation is an important element of the rehabilitation strategy and should be implemented where feasible.</p> <ul style="list-style-type: none"> <li>• Once re-vegetated, areas should be protected to prevent trampling and erosion.</li> <li>• No construction equipment, vehicles or unauthorised personnel should be allowed onto areas that have been vegetated.</li> <li>• Where rehabilitation sites are located within actively grazed areas, they should be fenced.</li> <li>• Fencing should be removed once a sound vegetative cover has been achieved.</li> <li>• Any runnels, erosion channels or washaways developing after revegetation should be backfilled and consolidated and the areas restored to a proper stable condition.</li> </ul>						

As highlighted in the introduction to this section, the most cost-effective way to reduce the cost and effort for rehabilitation is to reduce and minimise the disturbance footprint. The installation of the panel arrays without clearing the site, is the biggest benefit that can be applied in this regard.

### 5.19 FAUNAL MANAGEMENT

**Impact management outcome:** To reduce the direct impact on animals affected by the construction activities.

Impact Management Actions	Responsible person	Method of implementation	Timeframe for implementation	Responsible party for monitoring	Frequency of monitoring	Evidence of compliance
<ul style="list-style-type: none"> <li>Any animals (including snakes, tortoises and lizards) directly threatened by the clearing or construction activities should be removed to a safe location outside of the construction area by the ECO or other suitably qualified/experienced person.</li> <li>All trenches, open excavations and fence lines should be inspected on a daily basis (first thing in the morning) for any trapped fauna (particularly small mammals and reptiles). These should be removed to a safe location outside of the construction area by the ECO or other suitably qualified / experienced person.</li> <li>Faunal ladders to be installed in all temporary water storage areas.</li> <li>The development footprint may need to be flushed prior to completion of the perimeter fence to ensure that no large mammals become trapped within the development site.</li> <li>All faunal mortalities are to be reported to the Site ECO, who must maintain a register of faunal mortalities.</li> <li>The Site ECO must maintain a register of all faunal observations within the development site.</li> </ul>	EPC Contractor	Implementation of the actions detailed here.	Throughout the construction phase.	Site ECO and ECO.	Daily	Weekly environmental checklists.  Monthly environmental control reports.

In addition to the above actions, the avifaunal specialist recommends the following actions in respect of avifauna.

Impact	Mitigation/Management Objectives and Outcomes	Mitigation/Management Actions	Monitoring		
			Methodology	Frequency	Responsibility
Avifauna: Disturbance					

Impact	Mitigation/Management Objectives and Outcomes	Mitigation/Management Actions	Monitoring		
			Methodology	Frequency	Responsibility
The noise and movement associated with the construction activities at the development footprint will be a source of disturbance which would lead to the displacement of avifauna from the area	Prevent unnecessary displacement of avifauna by ensuring that contractors are aware of the requirements of the Construction Environmental Management Programme (EMPr.)	A site-specific EMPr must be implemented, which gives appropriate and detailed description of how construction activities must be conducted. All contractors are to adhere to the EMPr and should apply good environmental practice during construction. The EMPr must specifically include the following: <ul style="list-style-type: none"> <li>No off-road driving;</li> <li>Maximum use of existing roads;</li> <li>Measures to control noise and dust according to latest best practice;</li> <li>Restricted access to the rest of the property;</li> <li>Strict application of all recommendations in the botanical specialist report pertaining to the limitation of the footprint.</li> </ul>	<ul style="list-style-type: none"> <li>Implementation of the EMPr. Oversee activities to ensure that the EMPr is implemented and enforced via site audits and inspections. Report and record any non-compliance.</li> <li>Ensure that construction personnel are made aware of the impacts relating to off-road driving.</li> <li>Construction access roads must be demarcated clearly. Undertake site inspections to verify.</li> <li>Monitor the implementation of noise control mechanisms via site inspections and record and report non-compliance.</li> <li>Ensure that the construction area is demarcated clearly and that construction personnel are made aware of these demarcations. Monitor via site inspections and report non-compliance.</li> </ul>	On a daily basis	Contractor and ECO

## 6. OPERATIONAL PHASE – IMPACT MANAGEMENT OUTCOMES AND ACTIONS

This section provides details on the operational phase impact management outcomes and actions<sup>20</sup> that are commonly applicable to the operation of a Battery Energy Storage Facility and its associated infrastructure, as well as management actions outlined by participating specialists and those contained in the Registration for the facility.

Each subsection includes an aspect identified for the development of a BESS, and for each aspect a set of prescribed impact management outcomes and associated impact management actions have been identified.

The holder of the Registration is ultimately responsible to ensure the implementation of these outcomes and actions.

<sup>20</sup> All Environmental Management Actions allocated to the O&M contractor will apply equally to all sub-contractors responsible for any specific task.

## 6.1 OPERATIONAL WASTE

During the operational phase of the development, the amount of waste generated is likely to be very minimal and limited to normal domestic waste generated in the office, workshop waste from maintenance activities and damaged BESS modules.

It is proposed that the local municipality will provide services in terms of waste removal and sewage for the operational phase (excluding Hazardous Waste and damaged BESS) of the proposed project. However, should the municipality not have adequate capacity available for the handling of waste and sewage; then the O&M Contractor must make use of private contractors to ensure that the services are provided. The O&M Contractor must also ensure that adequate waste disposal measures are implemented by obtaining waste disposal dockets / slips of all waste and sewage that is removed from site.

**Impact management outcome:** To promote an integrated waste<sup>21</sup> management approach and ensure the management of waste during the construction phase is both lawful and sustainable

Impact Management Actions	Responsible person	Method of implementation	Timeframe for implementation	Responsible party for monitoring	Frequency of monitoring	Evidence of compliance
<ul style="list-style-type: none"> <li>• Wind and scavenger proof bins must be installed at the maintenance / control buildings and on-site substation and must be emptied on a weekly basis</li> <li>• All hazardous waste (including bitumen, fuel, oils, paints etc.) used during the operation and maintenance of the BESS facility shall be disposed of at an approved/registered hazardous-waste landfill site. The contractor responsible for the disposal shall provide disposal certificates to the site manager.</li> <li>• Used oil and grease must be removed from site to an approved used oil recycling company.</li> <li>• Under NO circumstances may any hazardous waste be spoiled on the site.</li> <li>• The servicing of operation/maintenance vehicles may not take place on site.</li> <li>• Damaged BESS modules should be stored in a designated area within the O&amp;M complex before being returned to supplier<sup>22</sup> for recycling.</li> </ul>	O&M Contractor	Implementation of the actions detailed in this section.	Throughout the Operational Phase	O&M Contractor to implement and maintain records.  Audit consultant.	Daily by O&M Contractor.  Annually / three yearly as part of operational environmental audits	Operational Environmental Audit Report.

• <sup>21</sup> Waste in this instance excludes excess oils that may be spilled as a result of transformer failure. Such an incident is discussed separately under the Hazardous Substances, Leakage and Spillage Plan below.

• <sup>22</sup> Or third-party recycler.

Impact Management Actions	Responsible person	Method of implementation	Timeframe for implementation	Responsible party for monitoring	Frequency of monitoring	Evidence of compliance
<ul style="list-style-type: none"> <li>Biomass from vegetation management activities must not be disposed of off-site but must be utilised as mulch as part of the ongoing rehabilitation<sup>23</sup>.</li> <li>Wastewater must be collected and disposed of at a suitable licenced disposal facility. Proof of disposal (i.e., waste disposal slips or waybills) should be retained on file for auditing purposes</li> </ul>						

## 6.2 OPERATIONAL GENERAL ECOLOGY CONSIDERATIONS

This section provides general management actions to ensure that operational activities do not degrade the ecological functioning of the site.

**Impact management outcome:** Ensure that operational activities do not degrade the ecological functioning of the site.

Impact Management Actions	Responsible person	Method of implementation	Timeframe for implementation	Responsible party for monitoring	Frequency of monitoring	Evidence of compliance
<ul style="list-style-type: none"> <li>Dust control should be continued into operation.</li> <li>Any trimming of protected species that may establish within the BESS area must be done in accordance with a permit.</li> <li>Other than the maintenance of the vegetated layer adjacent to the site for the purpose of firebreaks, no further clearing of vegetation may take place.</li> <li>Speed limits within the facility must be maintained and enforced.</li> <li>Specialist advice to be sought for the management of any fauna that establishes within the site during operations.</li> </ul>	O&M Contractor	Implementation of the actions detailed in this section.	Throughout the Operational Phase	O&M Contractor to implement and maintain records.  Audit consultant.	Daily by O&M Contractor.  Annually / three yearly as part of operational environmental audits	Operational Environmental Audit Report.

<sup>23</sup> This Biomass can be chipped should the volumes be high enough as to pose a fire risk.

Impact Management Actions	Responsible person	Method of implementation	Timeframe for implementation	Responsible party for monitoring	Frequency of monitoring	Evidence of compliance
<ul style="list-style-type: none"> <li>The O&amp;M contractor must ensure that the Avifaunal Monitoring plan in Appendix H of this EMP is implemented.</li> </ul>						

### 6.3 GENERAL OPERATIONAL MAINTENANCE

The section in the table below details general operational maintenance environmental impact management actions that are not covered in the sections above.

Impact Management Actions	Responsible person	Method of implementation	Timeframe for implementation	Responsible party for monitoring	Frequency of monitoring	Evidence of compliance
<ul style="list-style-type: none"> <li>Lubricants used to grease bearing of panel tracking systems should be conservatively used to avoid leakage or spills. Any leaks or spills that occur during maintenance operations must be cleaned up immediately and the contaminated soil / material disposed on at a registered disposal site for hazardous materials.</li> <li>Access roads and the internal road network must be maintained in a condition that allows for reasonable access and minimised erosion potential. All drainage, stormwater management and erosion control structures must be maintained to ensure their proper functioning.</li> <li>Regular monitoring for erosion to ensure that no erosion problems are occurring at the site as a result of the roads and other infrastructure. All erosion problems observed should be rectified as soon as possible.</li> <li>All maintenance vehicles to remain on the demarcated roads.</li> <li>The conservancy tank, associated with the ablation facilities at the on-site sub-station / maintenance buildings, must be maintained in full working condition.</li> <li>The perimeter security fence should be routinely patrolled to ensure that it still allows for the passage of small and medium sized mammals, at least at strategic places, and that the electrified strands are not causing animal electrocution.</li> <li>No unauthorized persons should be allowed onto the site.</li> <li>The maintenance of the transmission line infrastructure must retain the bird-friendly design features (bird-flappers and insulation). Any bird electrocution and collision events that occur should be recorded, including the species affected and the date.</li> </ul>	O&M Contractor	Implementation of the actions detailed in this section.	Throughout the Operational Phase	O&M Contractor to implement and maintain records.  Audit consultant.	Daily by O&M Contractor.  Annually / three yearly as part of operational environmental audits	Operational Environmental Audit Report.

Impact Management Actions	Responsible person	Method of implementation	Timeframe for implementation	Responsible party for monitoring	Frequency of monitoring	Evidence of compliance
<p>If repeated collisions occur within the same area, then further mitigation and avoidance measures may need to be implemented.</p> <ul style="list-style-type: none"> <li>• Staff present during the operational phase should receive environmental education so as to ensure that that no hunting, killing or harvesting of plants and animals occurs.</li> <li>• All alien plants present at the site should be controlled at least twice a year using the best practice methods for the species present.</li> <li>• Bare soil should be kept to a minimum, and at least some grass or low shrub cover should be encouraged in temporary construction areas.</li> <li>• No pets (cats and dogs) should be allowed within the BESS facility.</li> </ul>						

## 7. DECOMMISSIONING PHASE – IMPACT MANAGEMENT OUTCOMES AND ACTIONS

Should the activity ever cease or become redundant, the holder of the authorisation must undertake the required actions as prescribed by legislation at the time and comply with all relevant legal requirements.

After the lifespan of the facility<sup>24</sup> (20-25 years), there is a possibility that the entire facility will be decommissioned and closed (although other options for continuation may be investigated)

Appendix 5 of Regulation 982 of the 2014 EIA Regulations contains the required contents of a Closure Plan. The table below shows the minimum requirements for a closure plan. The operating entity for this facility must ensure that the closure plan complies with these requirements as well as any other legislative requirements that may come into effect during the lifecycle of the project.

Requirement	
(1)	A closure plan must include -
(a)	Details of - (i) The EAP who prepared the closure plan; and (ii) The expertise of that EAP.
(b)	Closure objectives.
(c)	Proposed mechanisms for monitoring compliance with and performance assessment against the closure plan and reporting thereon.
(d)	Measures to rehabilitate the environment affected by the undertaking of any listed activity or specified activity and associated closure to its natural or predetermined state or to a land use which conforms to the generally accepted principle of sustainable development including a handover report, where applicable.
(e)	Information on any proposed avoidance, management and mitigation measures that will be taken to address the environmental impacts resulting from the undertaking of the closure activity.
(f)	A description of the manner in which it intends to – (i) Modify, remedy, control or stop any action, activity or process which causes pollution or environmental degradation during closure; (ii) Remedy the cause of pollution or degradation and migration of pollutants during closure. (iii) Comply with any prescribed environmental management standards or practises; or (iv) Comply with any applicable provisions of the Act regarding closure.
(g)	Time periods within which the measure contemplated in the closure plan must be implemented.
(h)	The process for managing any environmental damage, pollution, pumping and treatment of extraneous water or ecological degradation as a result of closure.
(i)	Details of all public participation processes conducted in terms of regulation 41 of the Regulation, including – (i) Copies of any representations and comments received from registered interested and affected parties; (ii) A summary of comments received from, and a summary of issues raised by registered interested and affected parties, the date of receipt of these comments and the response of the EAP to those comments;

• <sup>24</sup> For the purposes of this section, the lifespan of the facility is deemed to be the period of the power purchase agreement.

Requirement
<ul style="list-style-type: none"> <li>(iii) The minutes of any meetings held by the EAP with interested and affected parties and other role players which record the views of the participants;</li> <li>(iv) Where applicable, an indication of the amendments made to the plan as a result of public participation processes conducted in terms of regulation 41 of these Regulations.</li> </ul>
<ul style="list-style-type: none"> <li>(j) Where applicable, details of any financial provisions for the rehabilitation, closure and ongoing post decommissioning management of negative environmental impacts.</li> </ul>

Within a period of at least 12 months prior to the planned closure and decommissioning of the site, a Closure Plan must be prepared and submitted to the Local Planning Authority (Enoch Mgijima Municipality), as well as the Provincial and National Environmental Authorities for input and approval. This plan must provide detail pertaining to site restoration, soil replacement, landscaping, pro-active conservation, and a timeframe for implementation. Furthermore, the Closure Plan must comply with any additional legislation and guidelines that may be applicable at the time.

Two possible scenarios are considered for this decommissioning phase, as follows:

### **7.1 SCENARIO 1: TOTAL CLOSURE & DECOMMISSIONING OF BESS FACILITY**

If the decision is taken at the end of the project lifespan (20 - 25 years) to totally decommission the BESS facility i.e., make the land available for an alternative land use, a closure plan as detailed above should be developed and should include provision for the following:

- All concrete and BESS infrastructure etc. must be removed from the BESS site i.e., foundations, support structures etc.;
- The holes where the panel support structures are removed must be levelled and covered with subsoil and topsoil;
- Tracks that are to be utilised for the future land use operations should be left in-situ. The remainder of the tracks to be removed (ripped), topsoil replaced and brush-packed to encourage re-vegetation and minimise erosion;
- All auxiliary buildings and access points should be demolished, and rubble removed, unless they can be used for/by the future land use. The competent authority may prescribe that the landscaping and underground infrastructure i.e., foundations be left *in situ*;
- The underground electric cables must be removed, if they cannot be used in the future land use;
- All material (cables, etc.) must be re-used or recycled wherever possible. Functional infrastructure could be repurposed upon decommissioning;
- The disturbed portions of the site must be brush-packed, replanted and/or seeded with locally sourced indigenous vegetation (as prescribed by the competent authorities) to allow re-vegetation and rehabilitation of the site (see plant species list attached);
- Discontinuation of Lease and Easement Agreements for main land and access roads;
- Consider whatever is economically or socially beneficial and risky for the project's Owners and other Stakeholders at this last stage

### **7.2 SCENARIO 2: PARTIAL DECOMMISSIONING / UPGRADE OF BESS FACILITY**

Due to low variable costs and loans repaid long ago, any owner of the facility may be interested in prolonging technical, functional, legal and economic lives of the plants for as long as possible, even beyond Power Purchase Agreement.

- This will require disposal of assets with shorter technical lives are critical

- Under this option, the O&M contractor will have to ensure that the validity period of all licences / permits and agreements is extended where necessary and that any legislation that has subsequently been promulgated is considered.

Should more advanced technology become available it may be decided to continue to use the site as a energy storage facility. Should this be the case, it is likely that much of the existing infrastructure will be re-used in the upgraded facility.

All infrastructure that will no longer be required for the upgraded facility must be removed as described in Scenario 1 above. The remainder of the infrastructure should remain in place or upgraded depending on the requirements of the new facility. .

## 8. MONITORING AND AUDITING

This section provided additional information of the monitoring and auditing requirements for the facility. It should be read in conjunction with the monitoring requirements outlined in the environmental impact management action tables as well the section on document control and reporting (which mainly deals with the internal monitoring requirements).

Environmental monitoring and audits are fundamental in ensuring the implementation of the management actions contained within this EMP are environmentally sustainable during development and operation of this BESS.

### 8.1 ENVIRONMENTAL MONITORING

#### 8.1.1 Construction ECO

The ECO, assisted by the Site ECO, is responsible for environmental monitoring during of the construction phase impact management actions as outlined in of this EMP. The monthly environmental control reports compiled by the ECO (which include the weekly environmental checklists compiled by the Site ECO), as well as the photographic record of works, must be submitted to the Holder of the Registration, the EPC contractor, the local authority, the provincial environmental authority, the national environmental authority and Eskom.

The following overarching recording and reporting requirements are required<sup>25</sup>:

- The holder of the authorisation must keep all records relating to monitoring and auditing on site and make it available for inspection to any relevant and competent authority in respect of this development.
- These compliance records must be submitted to the Director: Compliance monitoring.

#### 8.1.2 Rehabilitation and Habitat Restoration Monitoring requirements

As rehabilitation success, particularly in arid areas is unpredictable, monitoring and follow-up actions are important to achieve the desired cover and soil protection.

- Re-vegetated areas should be monitored every 4 months for the first 12 months following construction.
- Re-vegetated areas showing inadequate surface coverage (less than 20% within 12 months after re-vegetation) should be prepared and re-vegetated;
- Any areas showing erosion, should be re-contoured and seeded with indigenous grasses or other locally occurring species which grow quickly.

---

• <sup>25</sup> This must be read in conjunction with section 2 of the EMP

### 8.1.3 Plant Rescue Monitoring Requirements

It is important to monitor the success of the plant rescue operations, in order to the licencing authority on such conditional rescue.

Post construction monitoring of plants translocated during search and rescue must be undertaken to evaluate the success of the intervention. Biannual monitoring for 2 years post-transplant should be sufficient to gauge success.

The condition and numbers of all the rescued plants should be recorded and provided to the Audit consultant for inclusion in the environmental audit report.

## 8.2 ENVIRONMENTAL AUDITING<sup>26</sup>

In addition to the internal environmental audit (which takes place as part of the monthly environmental control report), the following external audits must also be undertaken:

- Within 30 days of completion of the construction phase.
- Within 30 days of completion of the rehabilitation phase<sup>27</sup>.
- Within 1 year commencement of operational activities.
- Every 5 years thereafter for the duration of the operational lifespan of the facility.

These external audits cannot be undertaken by the ECO and must be undertaken by an external audit consultant in compliance with Appendix 7 of the 2014 EIA regulations.

To promote transparency and cooperative governance, the results of relevant audits should be submitted to:

- The operators of the facility;
- The local authority Enoch Mgijima Local Municipality);
- The provincial environmental authority
- Eskom.

The results of the audit must be recorded in an environmental audit report and any non-compliance must be formally recorded, along with the response-action required or undertaken. Each non-compliance incident report must be issued to the relevant person(s), so that the appropriate corrective and preventative action is taken within an agreed upon timeframe.

These audits must be compiled in accordance with Appendix 7 of the EIA regulations, 2014. Appendix 7 of Regulation 982 of the 2014 EIA Regulations contains the required contents of an Environmental Audit Report. The table below shows the legislated requirements of an audit reports, and all relevant environmental audits undertaken as part of this development (during construction and operation) should comply with these requirements.

**Table 4:** Contents of an audit report

<b>(1) An Environmental audit report prepared in terms of these Regulations must contain:</b>
(a) Details of – (i) The independent person who prepared the environmental audit report; and (ii) The expertise of independent person that compiled the environmental audit report.
(b)Details of – (i) The independent person who prepared the environmental audit report; and (ii) The expertise of independent person that compiled the environmental audit report.
(c) A declaration that the independent auditor is independent in a form as may be specified by the competent authority.

- <sup>26</sup> To ensure independence, the auditing defined in this section cannot be undertaken, by the Holder of the EA, the EPC contractor, nor the Environmental Control Officer. These should be undertaken by an external audit consultant.
- <sup>27</sup> As it is envisioned that rehabilitation will take place concurrently with construction, both Audits can be undertaken as a single audit.

(d) An indication of the scope of, and the purpose for which, the environmental audit report was prepared.
(e) A description of the methodology adopted in preparing the environmental audit report.
(f) An indication of the ability of the EMPr, and where applicable the closure plan to –
(i) Sufficiently provide for the avoidance, management and mitigation of environmental impacts associated with the undertaking of the activity on an on-going basis;
(ii) Sufficiently provide for the avoidance, management and mitigation of environmental impacts associated with the closure of the facility; and
(iii) Ensure compliance with the provisions of environmental authorisation, EMPr, and where applicable, the closure plan.
(g) A description of any assumptions made, and any uncertainties or gaps in knowledge.
(h) A description of a consultation process that was undertaken during the course of carrying out the environmental audit report.
(i) A summary and copies of any comments that were received during any consultation process
(j) Any other information requested by the competent authority.

## 9. METHOD STATEMENTS

Method statements are written submissions by the Contractor to the Engineer and ECO in response to the requirements of this EMPr or in response to a request by the Engineer or ECO. The Contractor shall be required to prepare method statements for several specific construction activities and/or environmental management aspects.

The Contractor shall not commence the activity for which a method statement is required until the Engineer and ECO have approved the relevant method statement.

Method statements must be submitted at least (14) fourteen working days prior to the proposed date of commencement of the specific activity. Failure to submit a method statement may result in suspension of the activity concerned until such time as a method statement has been submitted and approved.

An approved method statement shall not absolve the Contractor from any of his obligations or responsibilities in terms of the contract. However, any damage caused to the environment through activities undertaken without an approved method statement shall be rehabilitated at the contractor's cost.

Additional method statements can be requested at the ECO's discretion at any time during the construction phase.

The method statements should include relevant details, such as:

- Construction procedures and location on the construction site;
- Start date and duration of the specific construction procedure;
- Materials, equipment and labour to be used;
- How materials, equipment and labour would be moved to and from the development site, as well as on site during construction;
- Storage, removal and subsequent handling of all materials, excess materials and waste materials;
- Emergency procedures in case of any potential accident / incident which could occur during the procedure;
- Compliance / non-compliance with an EMPr specification and motivation for proposed non-compliance.

### 9.1 METHOD STATEMENTS REQUIRED

Based on the specifications in this EMPr, the following method statements are likely to be required as a minimum (more method statements may be requested at any time as required under the direction of the ECO):

- Site establishment – Site Camps, Lay-down or storage areas, satellite camps, infrastructure;
- Workshop or plant emergency maintenance;

- Drilling and Piling operations
- Handling, transport and storage of Hazardous Chemical Substance's;
- Vegetation management – Protected species relocation, site clearing, alien vegetation;
- Access management – Roads, gates, crossings etc.;
- Fire plan;
- Waste management – transport, storage, segregation, classification, disposal (all waste streams);
- Social interaction – complaints management, compensation claims, access to properties etc.;
- Water – use (source, abstraction and disposal), access and all related information, crossings and mitigation;
- Emergency preparedness – Spills, training, other environmental emergencies;
- Dust and noise management methodologies;
- Fauna interaction and risk management; and
- Heritage, Archaeology and Palaeontology management.

## 10. HEALTH & SAFETY

The holder of the Authorisation must train safety representatives, managers and workers in workplace safety. The construction process must be compliant with all safety and health measures by the relevant act.

This section aims to provide a high-level overview to occupational Health and Safety Act but does not in any manner replace the project specific Health and Safety plan which would need to be compiled and approved in terms of this act and associated regulations.

The Occupational Health and Safety Act (No. 85 of 1993) aims to provide for / ensure the health and safety of persons at work or in connection with the activities of persons at work and to establish an advisory council for occupational health and safety.

The main Contractor must ensure compliance with the Occupational Health and Safety Act, as well as that all subcontractors comply with the Occupational Health and Safety Act.

The following is of key importance (Section 8 of the aforesaid Act):

General duties of employers to their employees

**(1)** Every employer shall provide and maintain, as far as is reasonably practicable, a working environment that is safe and without risk to the health of his employees.

**(2)** Without derogating from the generality of an employer's duties under subsection (1), the matters to which those duties refer include in particular-

(a) the provision and maintenance of systems of work, plant and machinery that, as far as is reasonably practicable, are safe and without risks to health;

(b) taking such steps as may be reasonably practicable to eliminate or mitigate any hazard or potential hazard to the safety or health of employees, before resorting to personal protective equipment;

(c) making arrangements for ensuring, as far as is reasonably practicable, the safety and absence of risks to health in connection with the production, processing, use, handling, storage or transport of articles or substances;

(d) establishing, as far as is reasonably practicable, what hazards to the health or safety of persons are attached to any work which is performed, any article or substance which is produced, processed, used, handled, stored or transported and any plant or machinery which

is used in his business, and he shall, as far as is reasonably practicable, further establish what precautionary measures should be taken with respect to such work, article, substance, plant or machinery in order to protect the health and safety of persons, and he shall provide the necessary means to apply such precautionary measures;

(e) providing such information, instructions, training and supervision as may be necessary to ensure, as far as is reasonably practicable, the health and safety at work of his employees;

(f) as far as is reasonably practicable, not permitting any employee to do any work or to produce, process, use, handle, store or transport any article or substance or to operate any plant or machinery, unless the precautionary measures contemplated in paragraphs (b) and (d), or any other precautionary measures which may be prescribed, have been taken;

(g) taking all necessary measures to ensure that tire requirements of this Act are complied with by every person in his employment or on premises under his control where plant or machinery is used;

(h) enforcing such measures as may be necessary in the interest of health and safety;

(i) ensuring that work is performed, and that plant or machinery is used under the general supervision of a person trained to understand the hazards associated with it and who have the authority to ensure that precautionary measures taken by the employer are implemented; and

(j) causing all employees to be informed regarding the scope of their authority as contemplated in section 37 (1) (b).

## 11. CONTRACTORS CODE OF CONDUCT

The Contractor's Code of Conduct is a document to be drawn up by the holder of the Registration<sup>28</sup> and provided to all contractors or subcontractors that undertake any service on site. This code of conduct should include generic conduct rules for construction and operation activities on this BESS Facility and must be signed by all contractors. **This code of conduct does not exonerate contractors from complying with this EMPr and must not be viewed as a stand-alone document.**

The following general template is suggested for this Code of Conduct document and must be adapted and updated to include the provisions of this EMPr, recommendations of participating specialists, conditions of approval of the Environmental Authorisation, conditions imposed by the Local Authority (as part of the rezoning and consent use), as well as all service agreements.

### 11.1 OBJECTIVES

To ensure compliance with the Conditions of the Environmental Authorisation, the Environmental Management Programme (EMPr), recommendations of participating specialists, conditions imposed by the Local Authority as part of the rezoning and subdivision, as well as the service agreements.

- To ensure the least possible damage to:
  - Existing infrastructure on and adjacent to the site;
  - Indigenous flora and fauna (biophysical environment); and
  - Water quality of surface and groundwater on and surrounding the site;
- Construction and development are undertaken with due consideration to all environmental factors;
- Where such damage occurs, provision is made for re-instatement and rehabilitation;

### 11.2 ACCEPTANCE OF REQUIREMENTS

---

• <sup>28</sup> or delegated to the EPC contractor.

In order to achieve these objectives, the Developer and EPC Contractor bind themselves jointly and severally to fulfil and comply with all the obligations contained herein, as well as prescriptions and obligations contained in other documents controlling the development of this BESS Facility.

### 11.3 CONTRACTOR'S PRE-CONSTRUCTION OBLIGATIONS

Contractors may not commence any construction of this BESS Facility until:

- The Contractor and the ECO have carried out a joint site inspection (this is to be done as part of the pre-construction compliance workshop as detailed in the EMPr above);
- A qualified ecologist has undertaken an inspection of the final development footprint and determined the number, species and extent of protected / listed plant species within this area;
- A permit for the removal or relocation-and-transplant of any protected / listed plant species has been obtained, where necessary;
- Search and rescue of sensitive plants, within the development footprint has been carried out in compliance with the plant rescue and protection plan, method statement to be provided and signed off by the ECO (where this is necessary);
- The construction and no-go areas are suitably demarcated to the satisfaction of the ECO;
- Where necessary, approval of Building / Construction Plans has been obtained from the local authority (Enoch Mjijima) Local Municipality); and
- All contract staff have attended the required environmental induction training and on-going environmental education sessions, as necessary.

### 11.4 CONTRACTOR'S OBLIGATIONS DURING CONSTRUCTION

- The Contractor is required to comply with the necessary Health and Safety requirements as required by the Occupational Health and Safety Act of 1993;
- The Contractor must comply with the construction requirements as detailed in the EMPr, including the following plans detailed therein:
  - Transport & Traffic Management Plan,
  - Stormwater and Erosion-Control Management Plan,
  - Vegetation Clearing & Plant Rescue Plan,
  - Re-vegetation & Rehabilitation Plan,
  - Alien Management Plan,
  - Open Space Management Plan;
- The contractor must comply with all the requirements detailed in the Environmental Authorisation;
- All conditions, processes and fees as prescribed by the Local Authority must be complied with.

## 12. SITE DEVELOPMENT PLAN

The Site Layout Plan (SLP) is attached in Appendix A of this EMPr. Approval of this EMPr infers approval of the SLP. The holder of the Registration and the contractor must ensure that all works are undertaken in approximation to the SLP. Should there be any dispute on any aspect of the works in relation to the SDP, the ECO must make ruling, which should be referred to the Competent Authority if necessary.

The table below shows the key components as defined in the SDP and the EMPr applicability of each of these components.

**Table 5:** EMPr Sections applicable to SLP Components

SDP Component	EMPr Applicability
Construction Road	Sections 4, 5, 6,7 & 8

Perimeter Road	Sections 4, 5, 6,7 & 8
Internal Roads	Sections 4, 5, 6,7 & 8
Access Road	Sections 4, 5, 6,7 & 8
Perimeter Fencing	Sections 5
BESS	Sections 4, 5, 6,7 & 8
Inverter Stations	Sections 4, 5, 6,7 & 8
AC Cabling	Sections 4 & 5,
Sub-Station	Appendix E
Auxiliary Building	Sections 4 & 5
Laydown Area	Section 5

## 13. PENALTIES

Should any person commit an action of non-compliance he/she may be convicted of an offence, in terms of Sub-regulation (1) of the National Environmental Management Act, to imprisonment for a period not exceeding ten years or to a fine not exceeding R10 Million as prescribed in terms of the Adjustment of Fines Act, 1991 (Act No. 101 of 1991).

Apart from a fine resulting from any legal mechanism, the ECO may advise the Engineer to impose a penalty for non-compliance in terms of this Environmental Management Programme (EMPr). The procedure detailed below is for a spot fine in terms of this EMPr and does not detail the procedure for fining in terms of any other legal mechanism.

### 13.1 PROCEDURES

The contractor shall comply with the environmental specifications and requirements of this EMPr, the Registration and Section 28 of NEMA, on an on-going basis and any failure on his part to do so will entitle the ER to impose a penalty.

In the event of non-compliance, the following recommended process shall be followed:

- The ECO shall issue a notice of non-compliance to the Engineer, stating the nature and magnitude of the contravention. A copy shall be provided to the Project Developer / Proponent.
- The Engineer will issue this notice to the Contractor.
- The Contractor shall act to correct the transgression within the period specified by the Engineer.
- The Contractor shall provide the Engineer with a written statement describing the actions to be taken to discontinue the non-compliance, the actions taken to mitigate its effects and the expected results of the actions. A copy shall be provided to the Project Developer / Proponent.
- In the case of the Contractor failing to remedy the situation within the predetermined time frame, the Engineer shall impose a monetary penalty (spot fine) based on the conditions of contract.
- Should the transgression be a blatant disregard of conditions of the EMPr or Registration, the Engineer (on advice from the ECO) can at their discretion immediately issue a fine and require the remediation (without first giving the contractor a chance to remediate).
- In the case of non-compliance giving rise to physical environmental damage or destruction, the Engineer shall be entitled to undertake or to cause to be undertaken such remedial works as may be required to make good such damage and to recover from the Contractor the full costs incurred in doing so.
- In the event of a dispute, difference of opinion, etc. between any parties in regard to or arising out of interpretation of the conditions of the EMPr, disagreement regarding the implementation or method of implementation of conditions of the EMPr or Registration etc. any party shall be entitled to require that the issue be referred to specialists for determination.
- The Engineer on advice from the ECO shall at all times have the right to stop work and/or certain activities on site in the case of non-compliance or failure to implement remediation measures.

## 13.2 OFFENCES AND PENALTIES

Any avoidable non-compliance with the conditions of the EMPR shall be considered sufficient ground for the imposition of a monetary penalty by the Engineer

Possible offences, which should result in the issuing of a contractual penalty, include, but are not limited to:

- Unauthorised entrance into no-go areas;
- Catching and killing of wild animals, and removal or damage to conservation-worthy plant species;
- Open fires outside of the contractor camp site and insufficient fire control;
- Unauthorised damage to natural vegetation;
- Unauthorised camp establishment (including stockpiling, storage, etc.);
- Hydrocarbons / hazardous material: negligent spills / leaks and insufficient storage;
- Ablution facilities: non-use, insufficient facilities, insufficient maintenance;
- Insufficient solid waste management (including clean-up of litter, unauthorised dumping etc.);
- Erosion due to negligence / non-performance;
- Excessive cement / concrete spillage / contamination;
- Non-induction of staff.

## 14. ABBREVIATIONS

AIA	Archaeological Impact Assessment
BGIS LUDS	Biodiversity Geographic Information System Land Use Decision Support
CBA	Critical Biodiversity Area
CDSM	Chief Directorate Surveys and Mapping
CEMP <sub>r</sub>	Construction Environmental Management Programme
DEFF	Department of Environment, Forestry and Fisheries
DEA&NC	Department of Environmental Affairs and Nature Conservation
DME	Department of Minerals and Energy
DSR	Draft Scoping Report
EAP	Environmental Impact Practitioner
EHS	Environmental, Health & Safety
EIA	Environmental Impact Assessment
EMPr	Environmental Management Programme
ESA	Ecological Support Area
GPS	Global Positioning System

GWh	Giga Watt hour
HIA	Heritage Impact Assessment
I&APs	Interested and Affected Parties
IDP	Integrated Development Plan
IFC	International Finance Corporation
IPP	Independent Power Producer
kV	Kilo Volt
LUDS	Land Use Decision Support
LUPO	Land Use Planning Ordinance
MW	Mega Watt
NEMA	National Environmental Management Act
NEMBA	National Environmental Management: Biodiversity Act
NERSA	National Energy Regulator of South Africa
NHRA	National Heritage Resources Act
NPAES	National Protected Area Expansion Strategy
NSBA	National Spatial Biodiversity Assessment
NWA	National Water Act
PM	Post Meridien; "Afternoon"
PSDF	Provincial Spatial Development Framework
REIPPPP	Renewable Energy Independent Power Producer Procurement Programme
S.A.	South Africa
SACAA / CAA	South African Civil Aviation Authority
SAHRA	South African National Heritage Resources Agency
SANBI	South Africa National Biodiversity Institute
SANS	South Africa National Standards
SDF	Spatial Development Framework
TOPS	Threatened and Protected Species