

# CBA & ESA Map



## Legend

- BSP ESA: Restore**
  - ESA2: Restore from other land use
- BSP CBA: Degraded**
  - CBA2: Terrestrial
- BSP CBA**
  - CBA: Terrestrial
  - CBA: Forest
  - CBA: Wetland

**Map Center:** Lon: 22°12'10.5"E  
Lat: 34°3'19.7"S

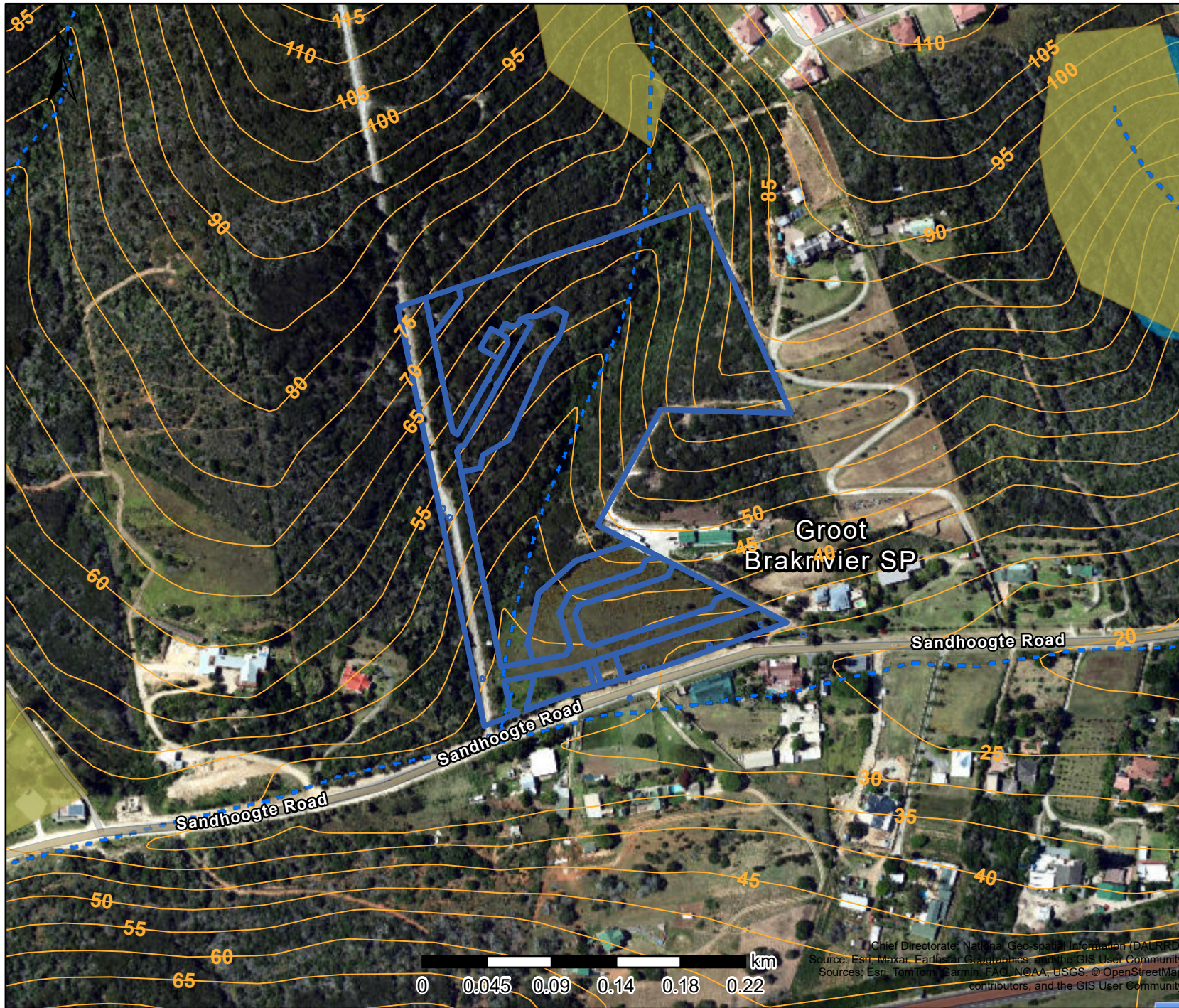
**Scale:** 1:4,514

**Date created:** 2024/22/05



Source: Esri, Maxar, Earthstar Geographics, and the GIS User Community  
Sources: Esri, TomTom, Garmin, FAO, NOAA, USGS, © OpenStreetMap contributors, and the GIS User Community  
CapeNature

# River & Wetland Map including 5m Contours



## Legend

### Rivers

--- Non-Perennial

### Wetlands (NWM5)

Classification

Seep wetland

### Wetlands (NFEPA)

Natural

5m Contours

Map Center: Lon: 22°12'11.4"E  
Lat: 34°3'19.8"S

Scale: 1:4,514

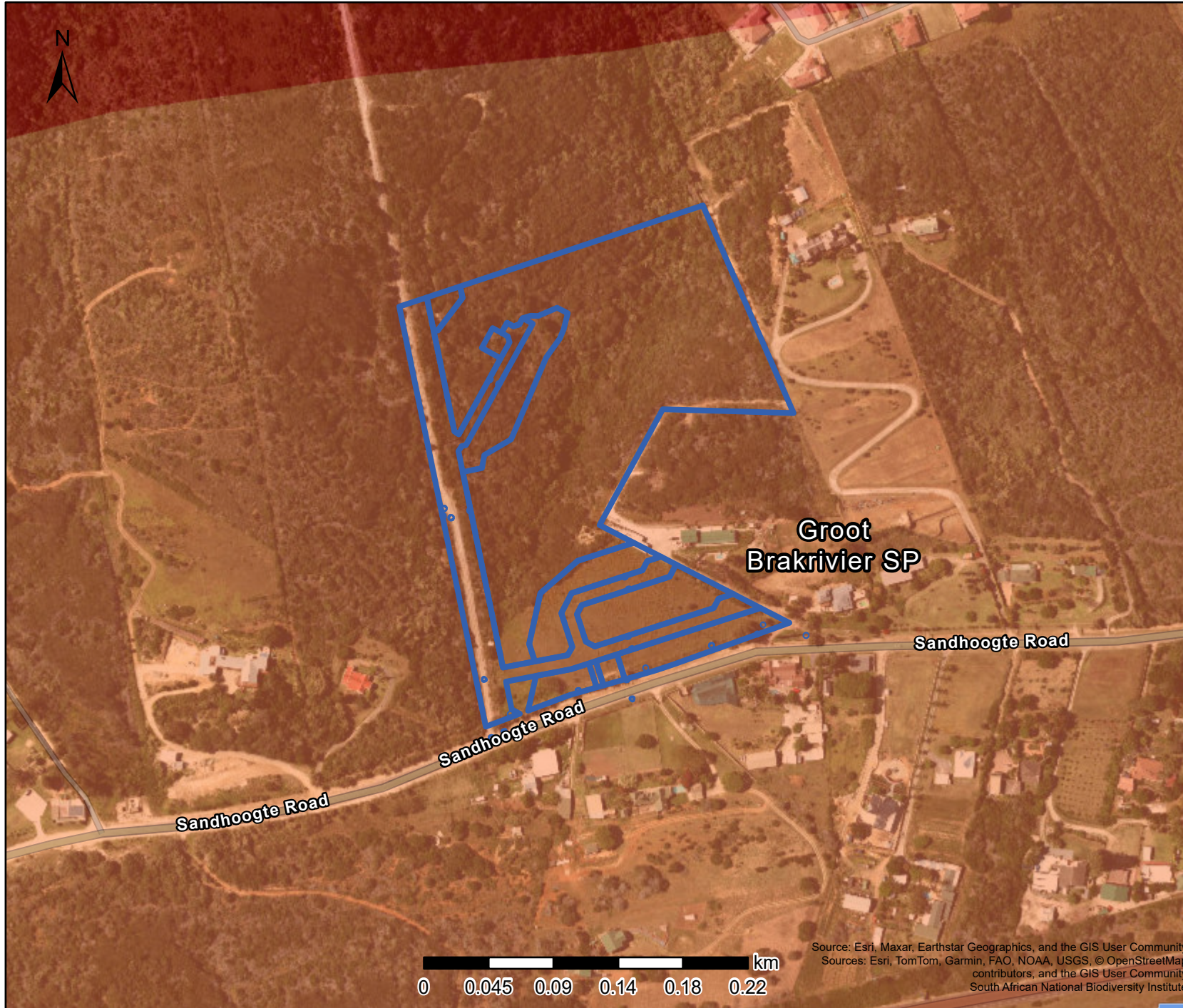
Date created: 2024/22/05



Western Cape  
Government  
FOR YOU



Chief Directorate, National Geo-spatial Information (DALRRD)  
Source: Esri, Maxar, Earthstar Geographics, and the GIS User Community  
Sources: Esri, TomTom, Garmin, FAO, NOAA, USGS, © OpenStreetMap contributors, and the GIS User Community

# SANBI Red List Original Map



## Legend

### Red List of Ecosystems Original Category

-  Critically Endangered
-  Endangered

**Map Center:** Lon: 22°12'11.4"E  
Lat: 34°3'19.8"S

**Scale:** 1:4,514

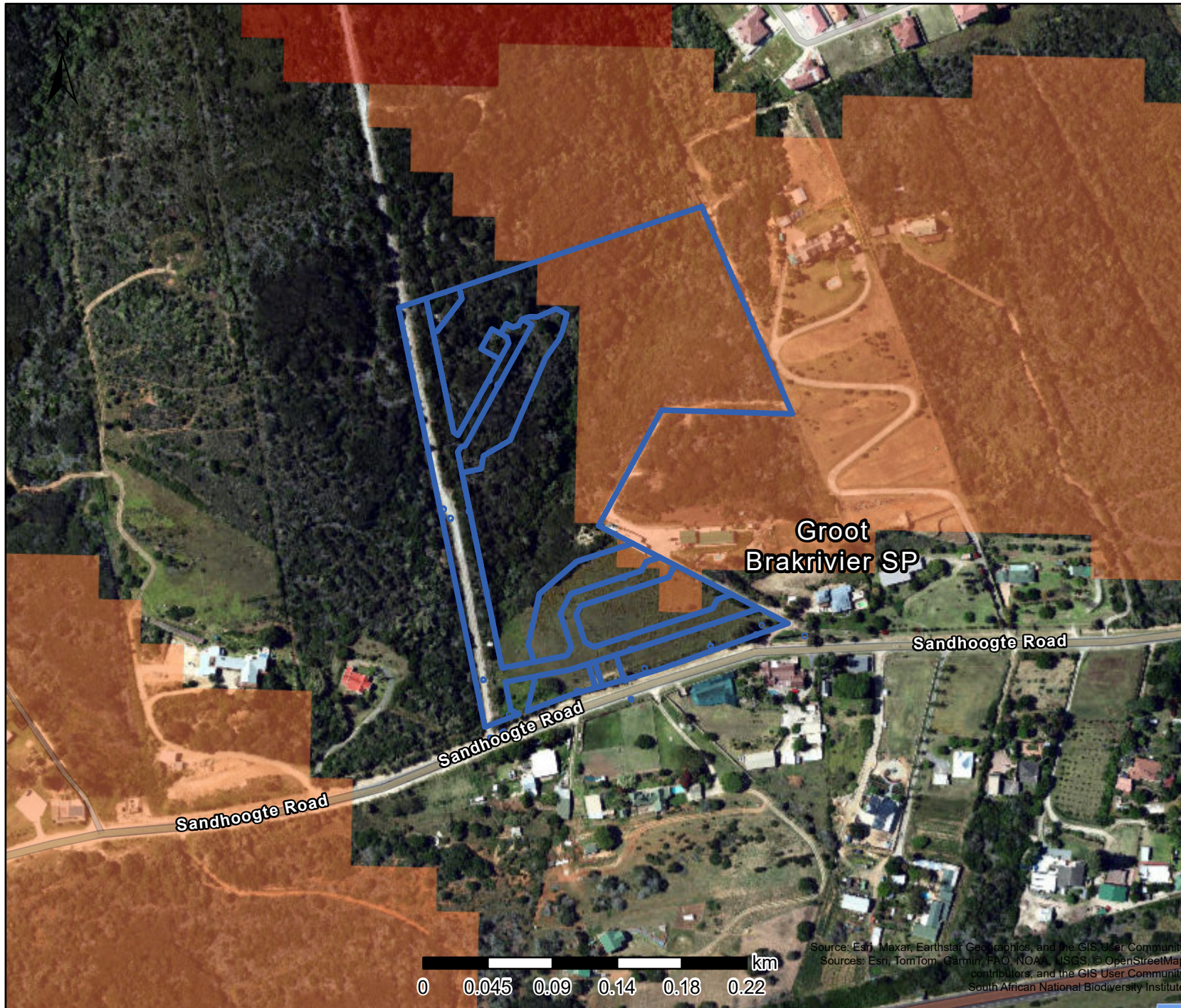
**Date created:** 2024/22/05



**Western Cape  
Government**  
FOR YOU



Source: Esri, Maxar, Earthstar Geographics, and the GIS User Community  
Sources: Esri, TomTom, Garmin, FAO, NOAA, USGS, © OpenStreetMap contributors, and the GIS User Community  
South African National Biodiversity Institute

# SANBI Red List: Remnants Map



## Legend

### Red List of Ecosystems Remnants Category

-  Critically Endangered
-  Endangered

**Map Center:** Lon: 22°12'11.4"E  
Lat: 34°3'19.8"S

**Scale:** 1:4,514

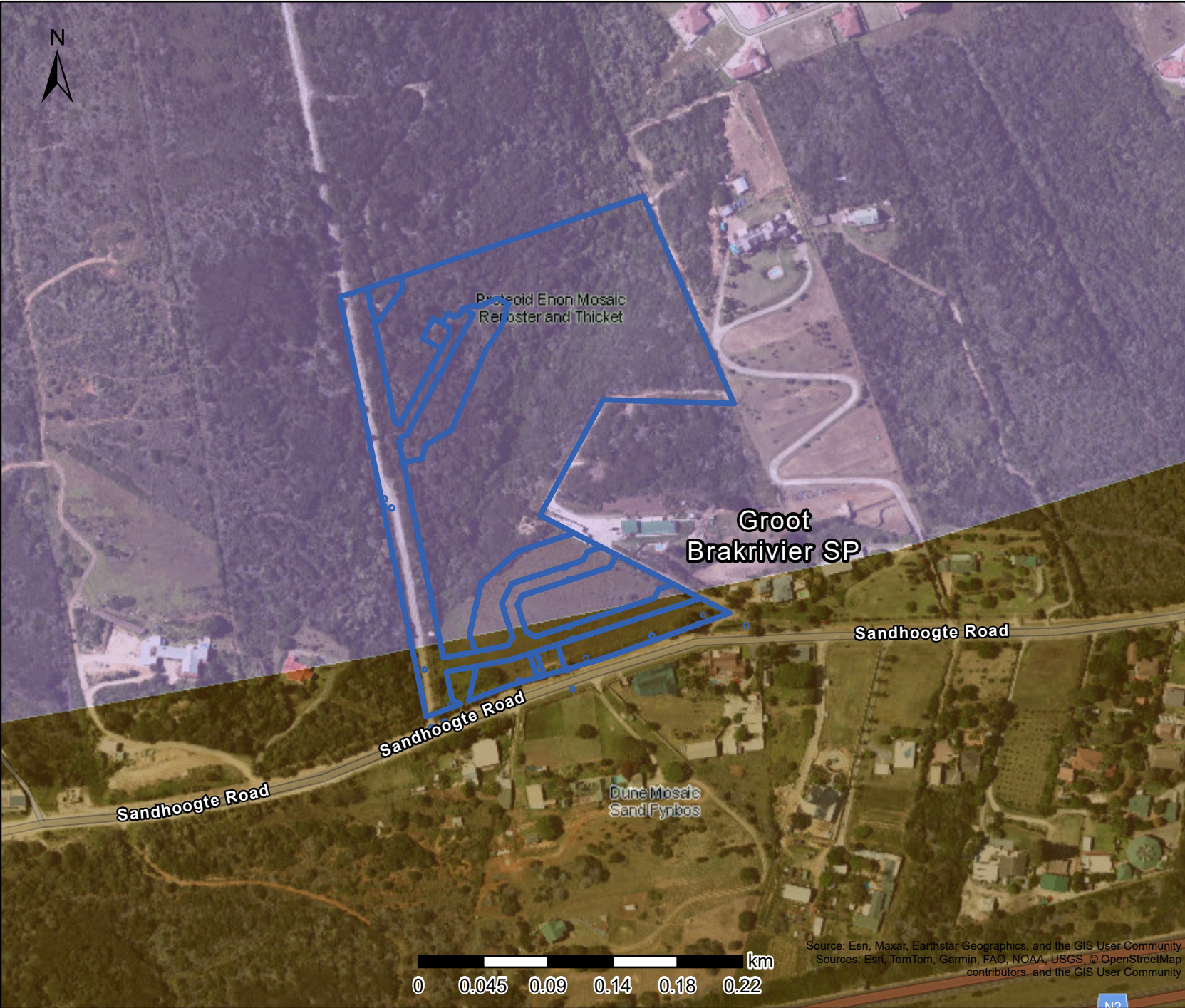
**Date created:** 2024/22/05



**Western Cape  
Government**  
FOR YOU

Source: Esri, Maxar, Earthstar Geographics, and the GIS User Community  
Sources: Esri, TomTom, Garmin, FAO, NOAA, USGS, © OpenStreetMap contributors, and the GIS User Community  
South African National Biodiversity Institute

# Vlok VegMap



## Legend

### Vlok Vegmap - Biome

#### BIOME

-  Fynbos
-  Thicket

**Map Center:** Lon: 22°12'12.9"E  
Lat: 34°3'20"S

**Scale:** 1:4,514

**Date created:** 2024/22/05



Source: Esri, Maxar, Earthstar Geographics, and the GIS User Community  
Sources: Esri, TomTom, Garmin, FAO, NOAA, USGS, © OpenStreetMap contributors, and the GIS User Community