

KAREEKLOOF ENERGY UP TO 900MW PV & BESS - LAYOUT with KEY SENSITIVITIES

0 0.75 1.5 3 Kilometers

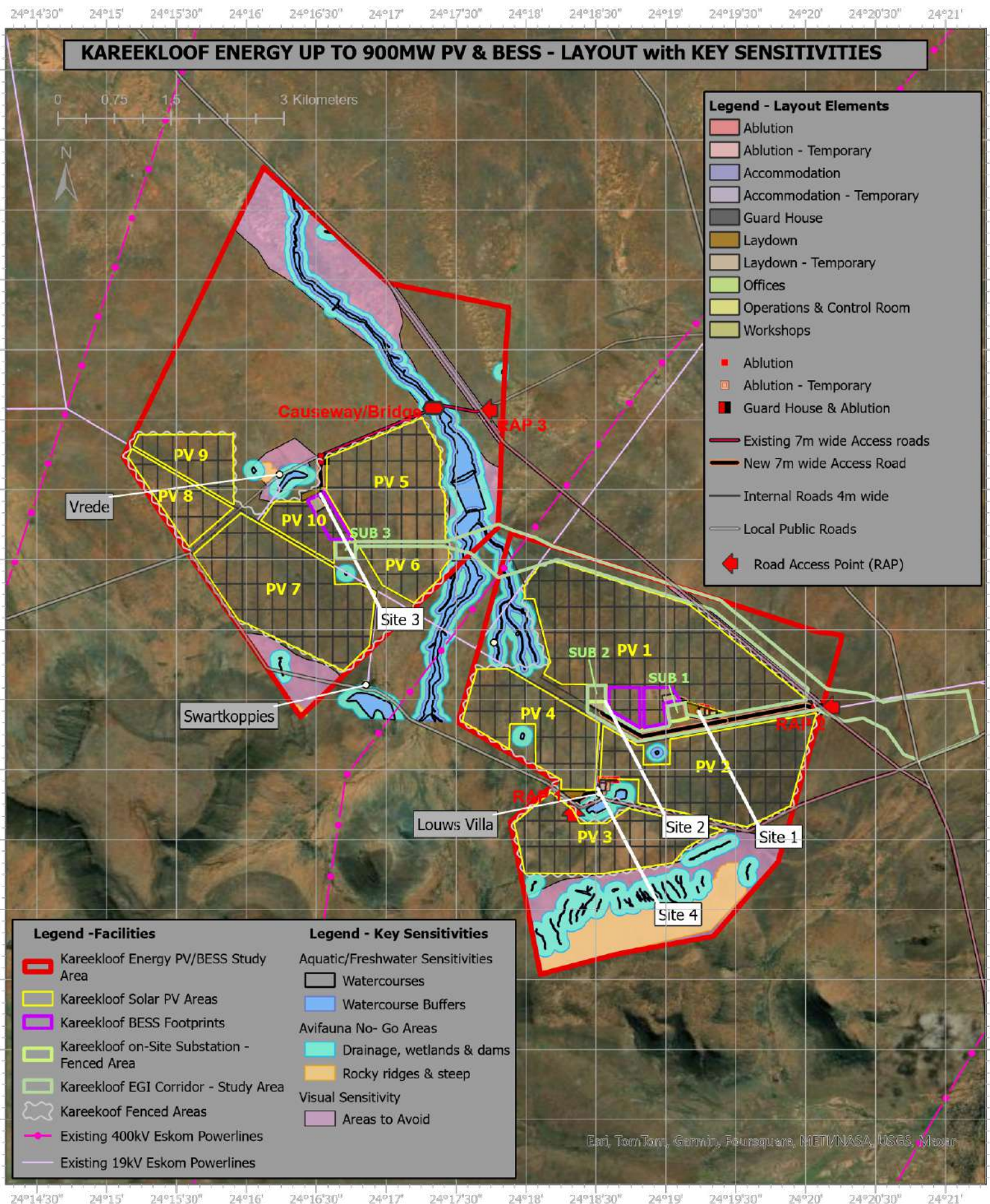


Legend - Layout Elements

- Ablution
- Ablution - Temporary
- Accommodation
- Accommodation - Temporary
- Guard House
- Laydown
- Laydown - Temporary
- Offices
- Operations & Control Room
- Workshops
- Ablution
- Ablution - Temporary
- Guard House & Ablution
- Existing 7m wide Access roads
- New 7m wide Access Road
- Internal Roads 4m wide
- Local Public Roads
- Road Access Point (RAP)

Legend -Facilities	Legend - Key Sensitivities
 Kareekloof Energy PV/BESS Study Area	Aquatic/Freshwater Sensitivities
 Kareekloof Solar PV Areas	 Watercourses
 Kareekloof BESS Footprints	 Watercourse Buffers
 Kareekloof on-Site Substation - Fenced Area	Avifauna No- Go Areas
 Kareekloof EGI Corridor - Study Area	 Drainage, wetlands & dams
 Kareekloof Fenced Areas	 Rocky ridges & steep
 Existing 400kV Eskom Powerlines	Visual Sensitivity
 Existing 19kV Eskom Powerlines	 Areas to Avoid

Envi, TomTom, Garmin, FourSquare, MET/NASA, USGS, Mapbox



KAREEKLOOF ENERGY UP TO 900MW PV & BESS - LAYOUT

0 0.75 1.5 3 Kilometers

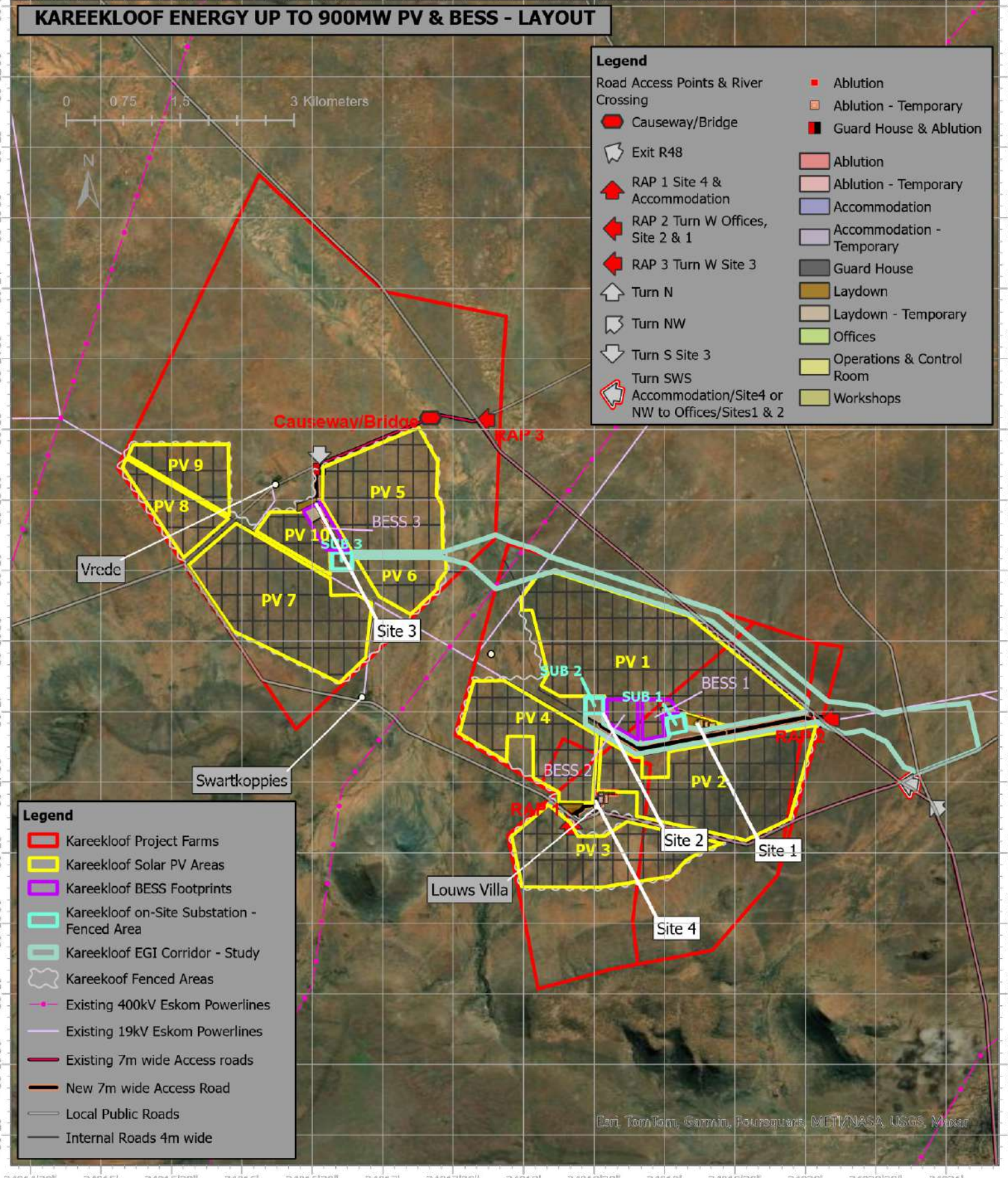


Legend

Road Access Points & River Crossing	■ Ablution
Causeway/Bridge	■ Ablution - Temporary
Exit R48	■ Guard House & Ablution
RAP 1 Site 4 & Accommodation	■ Ablution
RAP 2 Turn W Offices, Site 2 & 1	■ Ablution - Temporary
RAP 3 Turn W Site 3	■ Accommodation
Turn N	■ Accommodation - Temporary
Turn NW	■ Guard House
Turn S Site 3	■ Laydown
Turn SWS	■ Laydown - Temporary
Accommodation/Site4 or NW to Offices/Sites 1 & 2	■ Offices
	■ Operations & Control Room
	■ Workshops

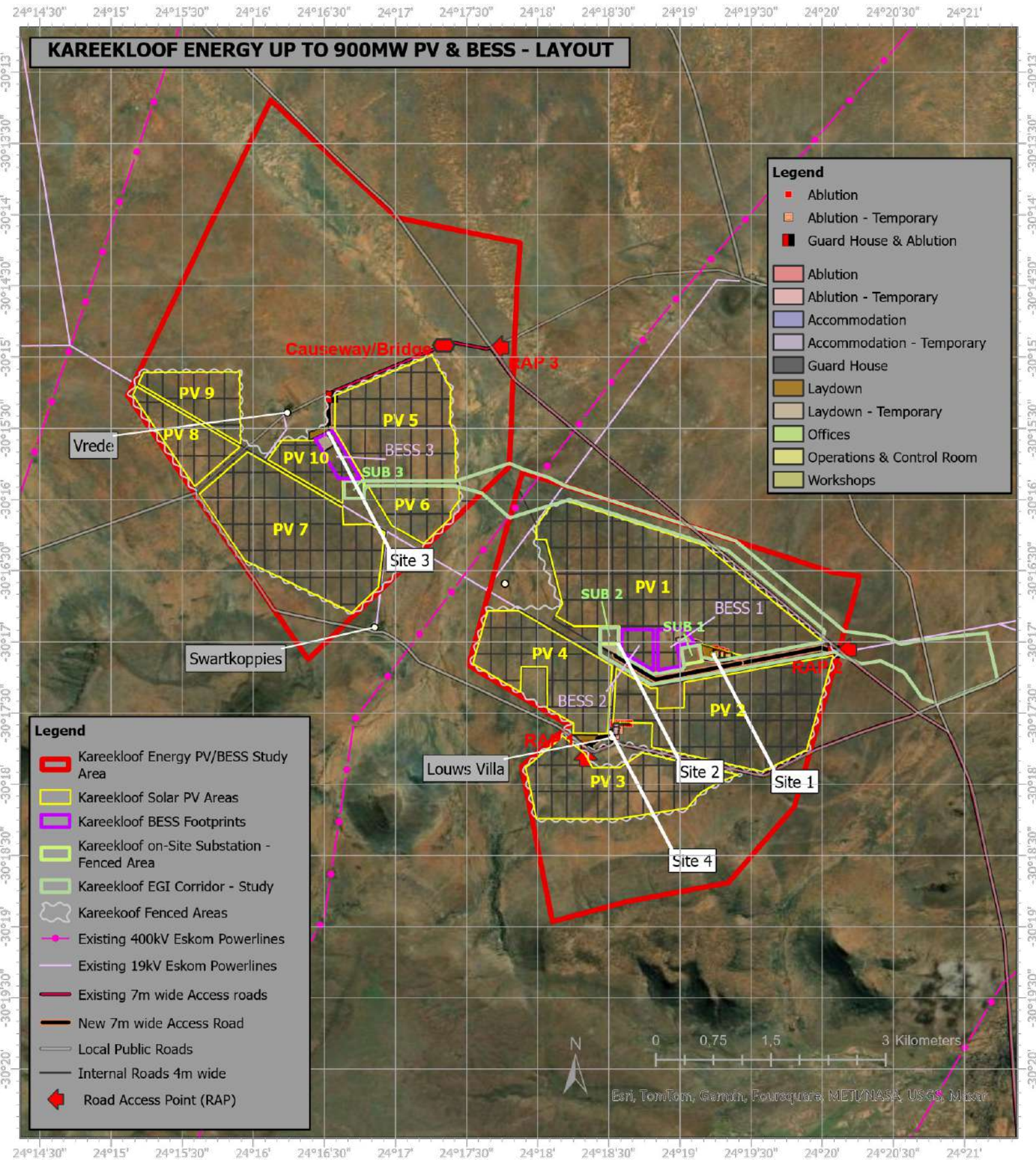
Legend

■ Kareekloof Project Farms
■ Kareekloof Solar PV Areas
■ Kareekloof BESS Footprints
■ Kareekloof on-Site Substation - Fenced Area
■ Kareekloof EGI Corridor - Study
■ Kareekloof Fenced Areas
■ Existing 400kV Eskom Powerlines
■ Existing 19kV Eskom Powerlines
■ Existing 7m wide Access roads
■ New 7m wide Access Road
■ Local Public Roads
■ Internal Roads 4m wide



© 2019 Esri, TomTom, Garmin, FourSquares, MET/NASA, USGS, Microsoft

KAREEKLOOF ENERGY UP TO 900MW PV & BESS - LAYOUT



Esri, TomTom, Garmin, Foursquare, MET/NASA, USGS, Mapbox