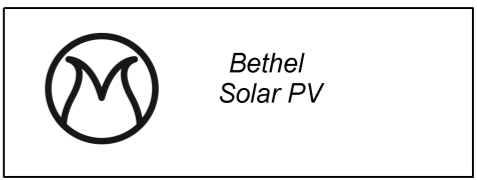


Legend	
	BESS Area
	Diesel Storage Area
	Eskom Switching Station
	IPP Substation
	Laydown Area
	O&M Buildings
	Project Footprint/Dev. Area
	Property Boundaries - Facility

National Freeway; National Route		International Boundary and Beacon	
Arterial Route		Provincial Boundary	
Main Road		Protected Area	
Secondary Road; Bench Mark		Perennial River	
Other Road; Bridge		Perennial Water	
Track and Hiking Trail		Non-perennial River	
Railway; Station or Siding		Non-Perennial Water	
Other Railway; Tunnel		Dry Water Course	
Embankment; Cutting		Dry Pan	
Power Line		Marsh and Vlei	
Built-up Area (High, Low Density)		Pipeline (above ground)	
Buildings; Ruin		Water Tower; Reservoir; Water Point	
Post Office; Police Station; Store		Coastal Rocks	
Place of Worship; School; Hotel		Prominent Rock Outcrop	
Fence; Wall		Erosion; Sand	
Windpump; Monument		Woodland	
Communication Tower		Cultivated Land	
Mine Dump; Excavation		Orchard or Vineyard	
Trigonometrical Station; Marine Beacon		Recreation Ground	
Lighthouse and Marine Light		Row of Trees	
Cemetery; Grave			

Projects:
Bethel Solar PV

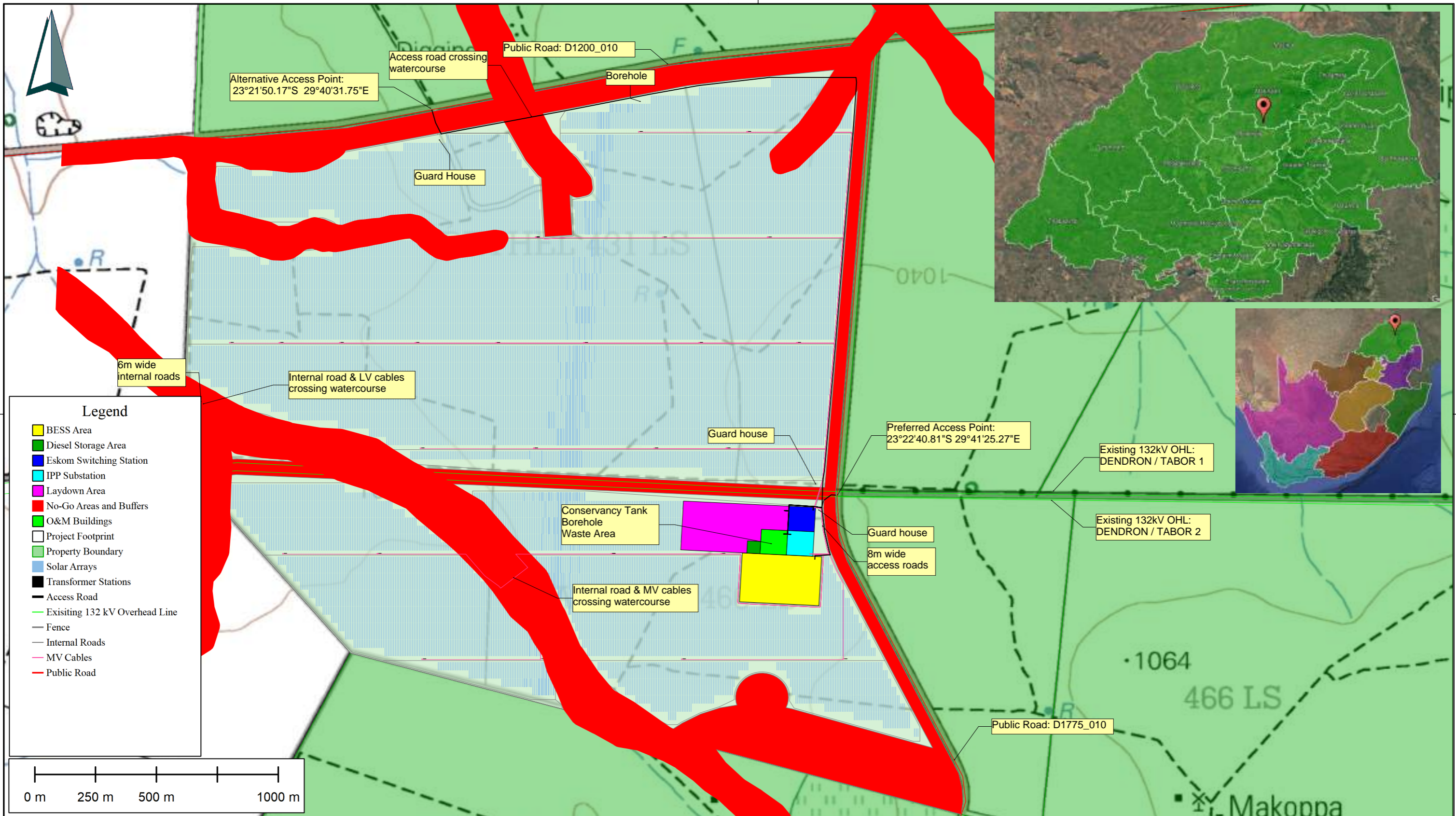
Approved By:
Megan Dennis
Drawn By:
Johan Janse van Rensburg



Description:
Development Footprint

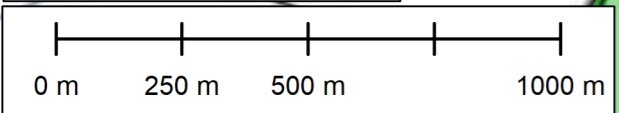
Scale:
1:25000
Date:
07/07/2025

Project No. / Drg. No. / Rev.:
Bethel Solar PV / 002 / 1



Legend

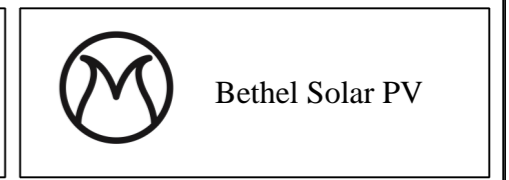
- BESS Area
- Diesel Storage Area
- Eskom Switching Station
- IPP Substation
- Laydown Area
- No-Go Areas and Buffers
- O&M Buildings
- Project Footprint
- Property Boundary
- Solar Arrays
- Transformer Stations
- Access Road
- Existing 132 kV Overhead Line
- Fence
- Internal Roads
- MV Cables
- Public Road



International Boundary and Beacon	National Freeway; National Route	Communication Tower
Provincial Boundary	Arterial Route	Mine Dump; Excavation
Protected Area	Main Road	Trigonometrical Station; Marine Beacon
Perennial River	Secondary Road; Bench Mark	Lighthouse and Marine Light
Perennial Water	Other Road; Bridge	Cemetery; Grave
Non-perennial River	Track and Hiking Trail	
Non-Perennial Water	Railway; Station or Siding	
Dry Water Course	Other Railway; Tunnel	
Dry Pan	Embankment; Cutting	
Marsh and Vlei	Power Line	
Pipeline (above ground)	Built-up Area (High, Low Density)	
Water Tower; Reservoir; Water Point	Buildings; Ruin	
Coastal Rocks	Post Office; Police Station; Store	
Prominent Rock Outcrop	Place of Worship; School; Hotel	
Erosion; Sand	Fence; Wall	
Woodland	Windpump; Monument	
Cultivated Land	Communication Tower	
Orchard or Vineyard		
Recreation Ground		
Row of Trees		

Projects:
Bethel Solar PV

Approved By:
Megan Dennis
Drawn By:
Johan Janse van Rensburg



Description:
Project Layout Diagram

Scale:
1:15000
Date:
18/08/2025

Project No. / Drg. No. / Rev.:
Bethel Solar PV / 001 / 2

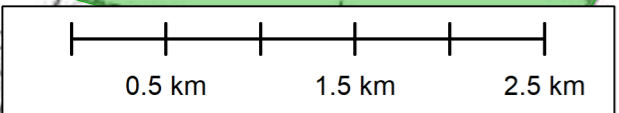
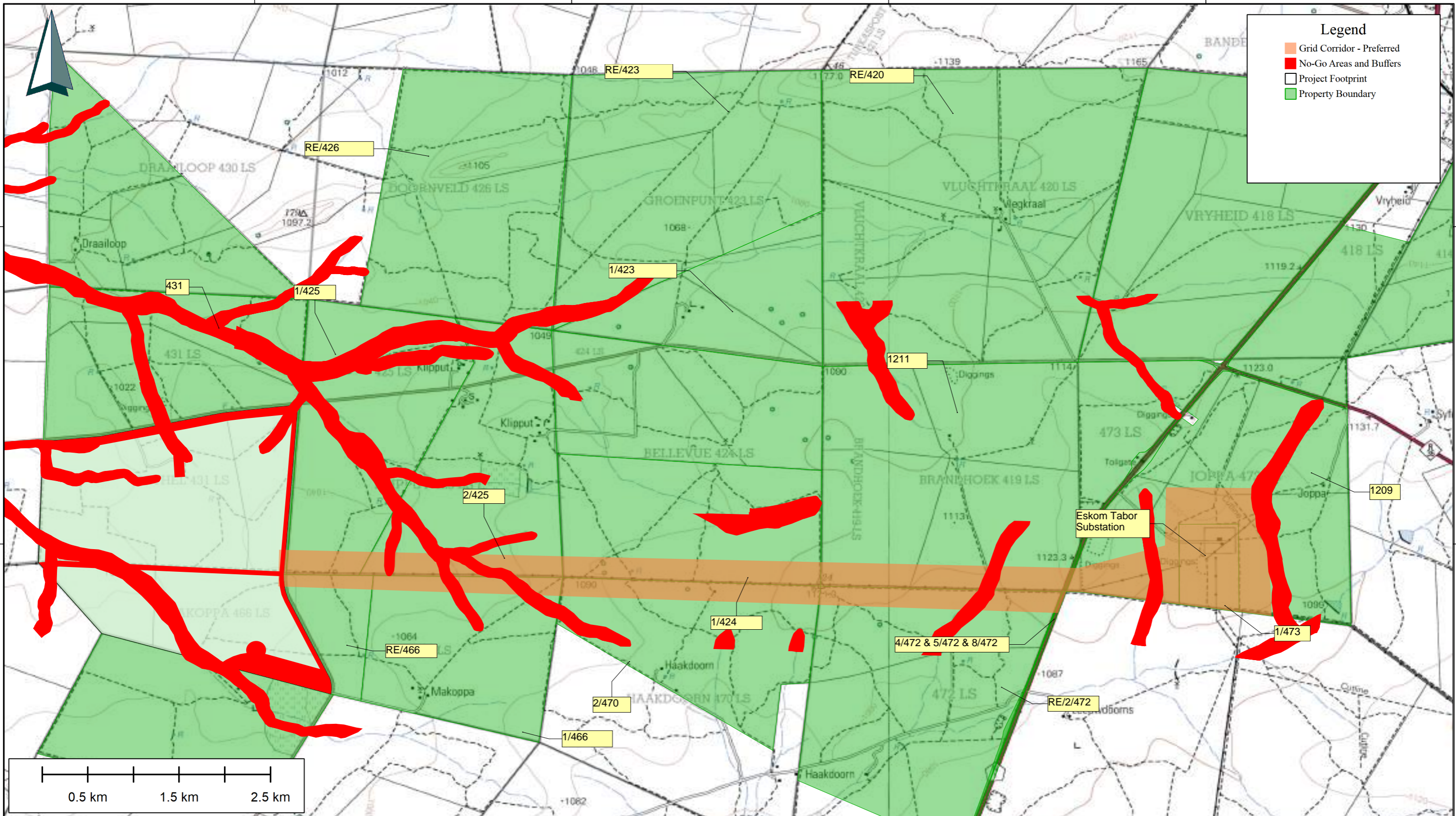
29° 41' 15" E 29° 43' 07.5" E 29° 45' 00" E 29° 46' 52.5" E

23° 20' 37.5" S
23° 22' 30" S
23° 24' 22.5" S

23° 20' 37.5" S
23° 22' 30" S
23° 24' 22.5" S

Legend

- Grid Corridor - Preferred
- No-Go Areas and Buffers
- Project Footprint
- Property Boundary



International Boundary and Beacon		National Freeway; National Route		
Provincial Boundary		Arterial Route		
Protected Area		Main Road		
Perennial River		Secondary Road; Bench Mark		
Perennial Water		Other Road; Bridge		
Non-perennial River		Track and Hiking Trail		
Non-Perennial Water		Railway; Station or Siding		
Dry Water Course		Other Railway; Tunnel		
Marsh and Vlei		Embankment; Cutting		
Pipeline (above ground)		Power Line		
Water Tower; Reservoir; Water Point		Built-up Area (High, Low Density)		
Coastal Rocks		Buildings; Ruin		
Prominent Rock Outcrop		Post Office; Police Station; Store		
Erosion; Sand		Place of Worship; School; Hotel		
Woodland		Fence; Wall		
Cultivated Land		Windpump; Monument		
Orchard or Vineyard		Communication Tower		
Recreation Ground		Mine Dump; Excavation		
Row of Trees		Trigonometrical Station; Marine Beacon		
		Lighthouse and Marine Light		
		Cemetery; Grave		

Projects:
Bethel Solar PV

Approved By:
Megan Dennis
Drawn By:
Johan Janse van Rensburg

Bethel Solar PV

Description:
Primary Grid Corridor (Preferred)

Scale:
1:40000
Date:
18/08/2025

Project No. / Drg. No. / Rev.:
Bethel Solar PV / 003 / 2

29° 41' 15" E 29° 43' 07.5" E 29° 45' 00" E 29° 46' 52.5" E

29° 41' 15" E

29° 43' 07.5" E

29° 45' 00" E

29° 46' 52.5" E

23° 20' 37.5" S

23° 22' 30" S

23° 24' 22.5" S

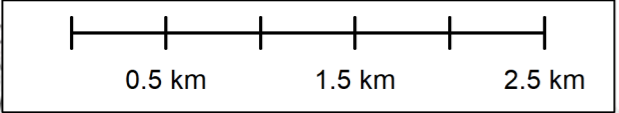
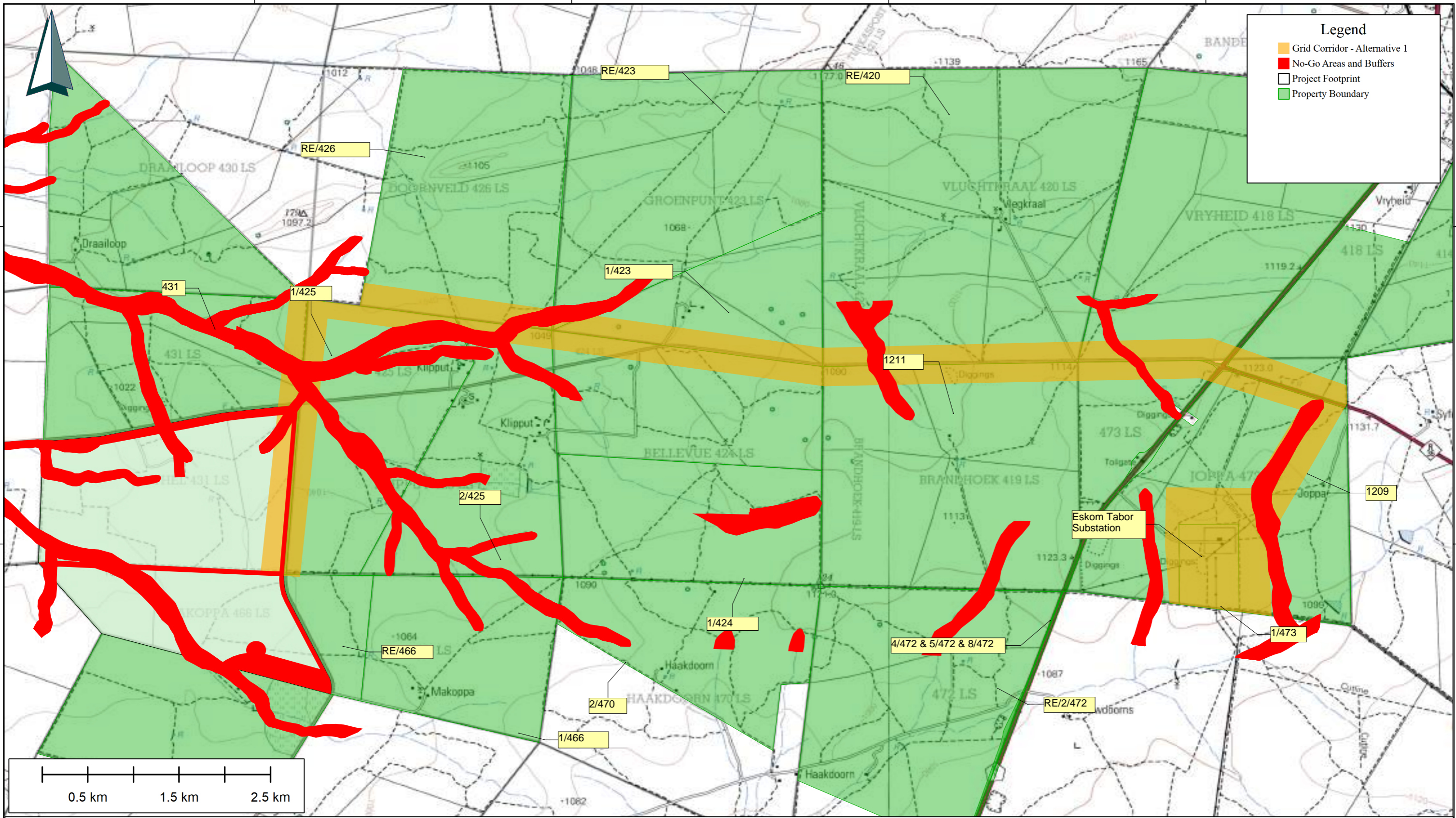
23° 20' 37.5" S

23° 22' 30" S

23° 24' 22.5" S

Legend

- Grid Corridor - Alternative 1
- No-Go Areas and Buffers
- Project Footprint
- Property Boundary



International Boundary and Beacon	National Freeway; National Route	Post Office; Police Station; Store
Provincial Boundary	Arterial Route	Place of Worship; School; Hotel
Protected Area	Main Road	Fence; Wall
Perennial River	Secondary Road; Bench Mark	Windpumps; Monument
Perennial Water	Other Road; Bridge	Communication Tower
Non-perennial River	Track and Hiking Trail	Mine Dump; Excavation
Non-Perennial Water	Railway; Station or Siding	Trigonometrical Station; Marine Beacon
Dry Water Course	Other Railway; Tunnel	Lighthouse and Marine Light
Dry Pan	Embankment; Cutting	Cemetery; Grave
Marsh and Vlei	Power Line	
Pipeline (above ground)	Built-up Area (High, Low Density)	
Water Tower; Reservoir; Water Point	Buildings; Ruin	
Coastal Rocks	Post Office; Police Station; Store	
Prominent Rock Outcrop	Place of Worship; School; Hotel	
Erosion; Sand	Fence; Wall	
Woodland	Windpumps; Monument	
Cultivated Land	Communication Tower	
Orchard or Vineyard	Mine Dump; Excavation	
Recreation Ground	Trigonometrical Station; Marine Beacon	
Row of Trees	Lighthouse and Marine Light	

Projects:
Bethel Solar PV

Approved By:
Megan Dennis
Drawn By:
Johan Janse van Rensburg

Bethel Solar PV

Description:
Secondary Grid Corridor
(Alternative 1)

Scale:
1:40000
Date:
18/08/2025

Project No. / Drg. No. / Rev.:
Bethel Solar PV / 004 / 2

29° 41' 15" E

29° 43' 07.5" E

29° 45' 00" E

29° 46' 52.5" E

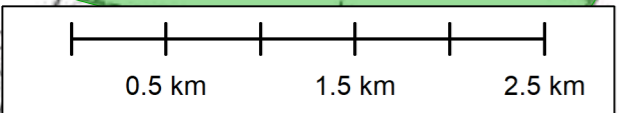
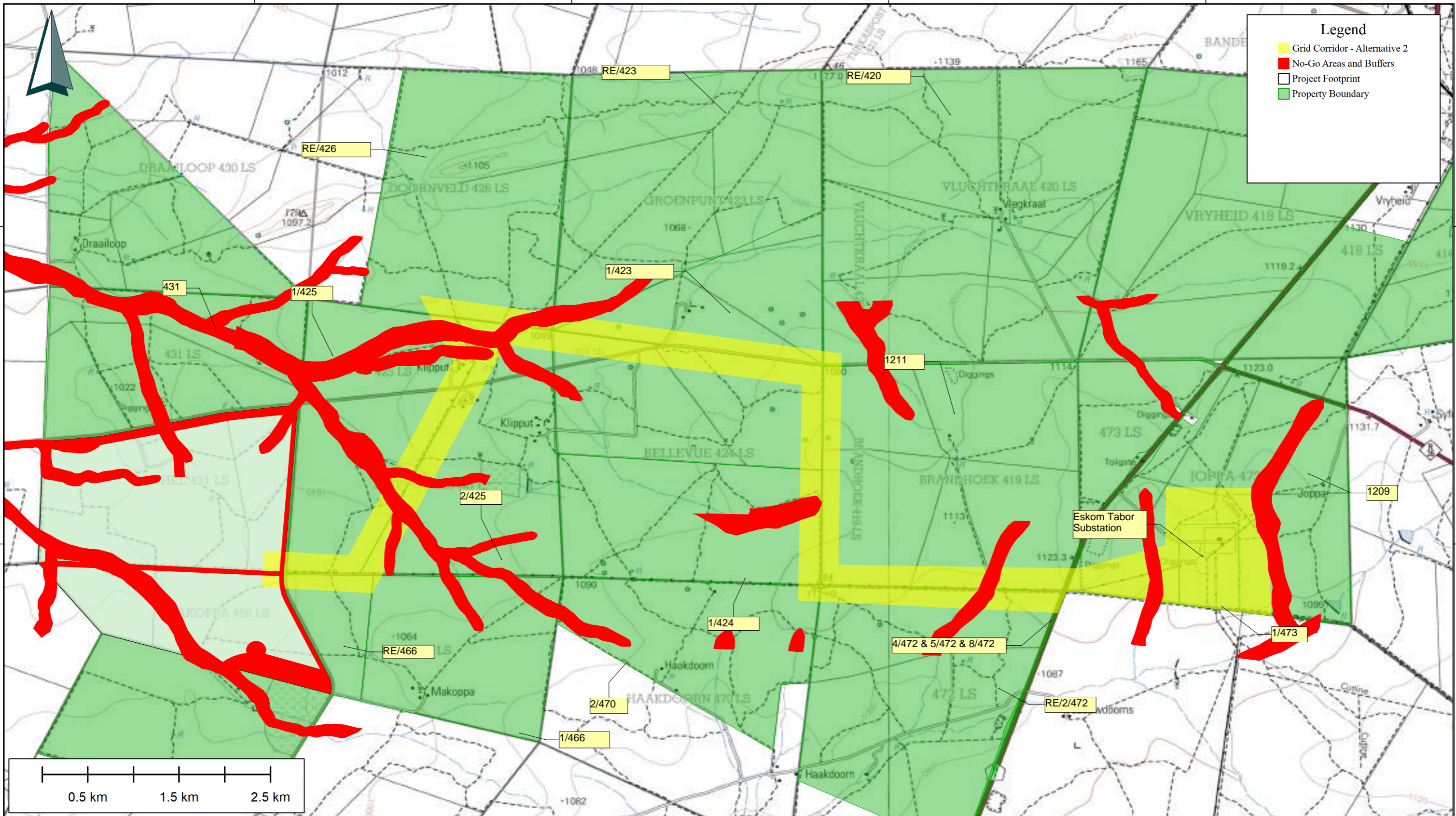
29° 41' 15" E 29° 43' 07.5" E 29° 45' 00" E 29° 46' 52.5" E

23° 20' 37.5" S
23° 22' 30" S
23° 24' 22.5" S

23° 20' 37.5" S
23° 22' 30" S
23° 24' 22.5" S

Legend

- Grid Corridor - Alternative 2
- No-Go Areas and Buffers
- Project Footprint
- Property Boundary



International Boundary and Beacon	National Freeway; National Route	Post Office; Police Station; Store
Provincial Boundary	Arterial Route	Place of Worship; School; Hotel
Protected Area	Main Road	Fence; Wall
Perennial River	Secondary Road; Bench Mark	Windpump; Monument
Perennial Water	Other Road; Bridge	Communication Tower
Non-perennial River	Track and Hiking Trail	Mine Dump; Excavation
Non-Perennial Water	Railway; Station or Siding	Trigonometrical Station; Marine Beacon
Dry Water Course	Other Railway; Tunnel	Lighthouse and Marine Light
Dry Pan	Embankment; Cutting	Cemetery; Grave
Marsh and Vlei	Power Line	
Pipeline (above ground)	Built-up Area (High, Low Density)	
Water Tower; Reservoir; Water Point	Buildings; Ruin	
Coastal Rocks	Post Office; Police Station; Store	
Prominent Rock Outcrop	Place of Worship; School; Hotel	
Erosion; Sand	Fence; Wall	
Woodland	Windpump; Monument	
Cultivated Land	Communication Tower	
Orchard or Vineyard	Mine Dump; Excavation	
Recreation Ground	Trigonometrical Station; Marine Beacon	
Row of Trees	Lighthouse and Marine Light	

Projects:
Bethel Solar PV

Approved By:
Megan Dennis
Drawn By:
Johan Janse van Rensburg

Bethel Solar PV

Description:
Tertiary Grid Corridor (Alternative 2)

Scale:
1:40000
Date:
18/08/2025

Project No. / Drg. No. / Rev.:
Bethel Solar PV / 005 / 2

29° 41' 15" E 29° 43' 07.5" E 29° 45' 00" E 29° 46' 52.5" E