

**SCREENING REPORT FOR AN ENVIRONMENTAL AUTHORIZATION AS  
REQUIRED BY THE 2014 EIA REGULATIONS – PROPOSED SITE  
ENVIRONMENTAL SENSITIVITY**

**EIA Reference number:** TBC

**Project name:** Outeniqua

**Project title:** Outeniqua

**Date screening report generated:** 15/09/2025 14:40:18

**Applicant:** CapeNature

**Compiler:** Cape EAPrac

**Compiler signature:**  
.....

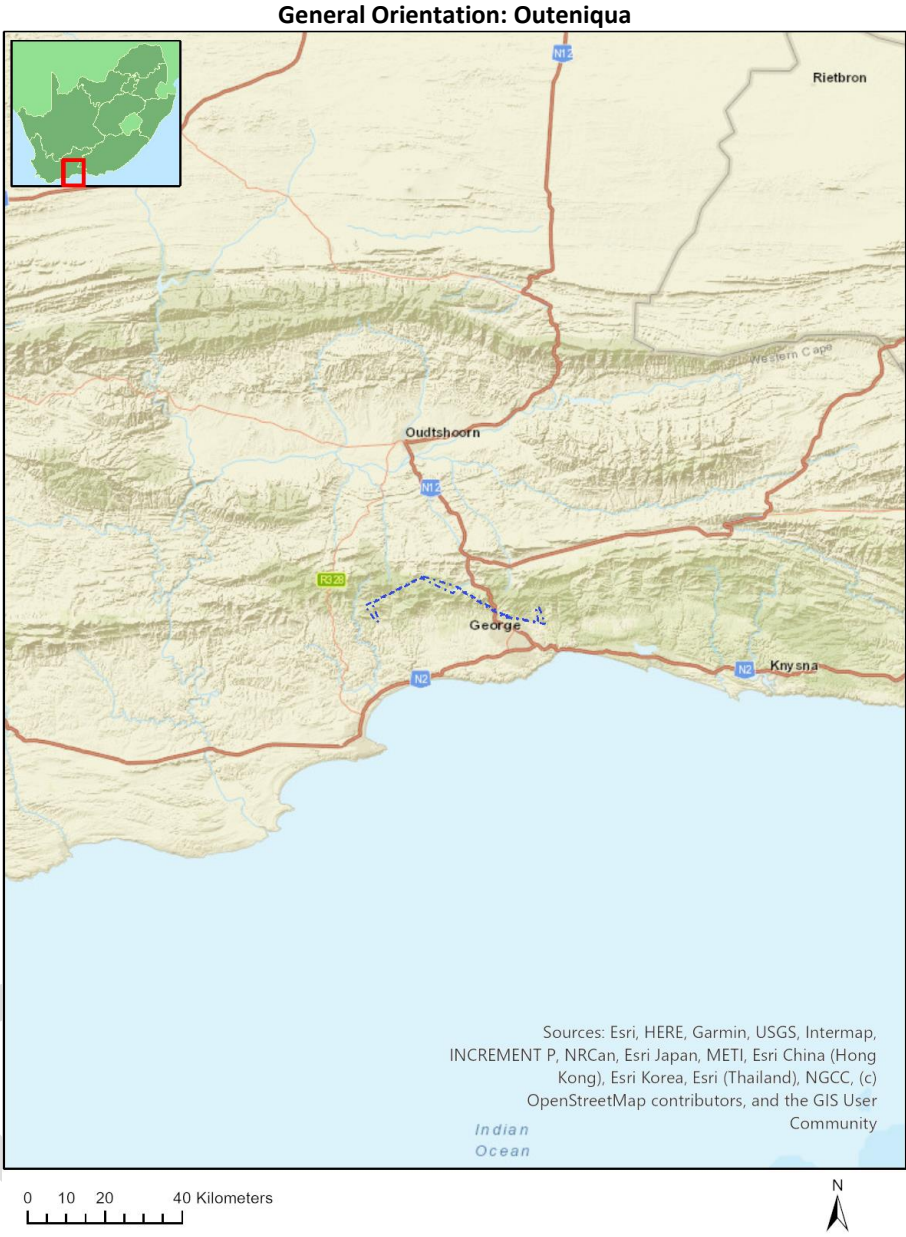
**Application Category:** Transformation of land | Indigenous vegetation

# Table of Contents

- Proposed Project Location ..... 3
  - Orientation map 1: General location ..... 3
- Map of proposed site and relevant area(s) ..... 4
  - Cadastral details of the proposed site ..... 4
  - Wind and Solar developments with an approved Environmental Authorisation or applications under consideration within 30 km of the proposed area ..... 6
  - Environmental Management Frameworks relevant to the application ..... 7
- Environmental screening results and assessment outcomes ..... 7
  - Relevant development incentives, restrictions, exclusions or prohibitions ..... 7
  - Proposed Development Area Environmental Sensitivity ..... 8
  - Specialist assessments identified ..... 8
- Results of the environmental sensitivity of the proposed area ..... 10
  - MAP OF RELATIVE AGRICULTURE THEME SENSITIVITY ..... 10
  - MAP OF RELATIVE ANIMAL SPECIES THEME SENSITIVITY ..... 11
  - MAP OF RELATIVE AQUATIC BIODIVERSITY THEME SENSITIVITY ..... 12
  - MAP OF RELATIVE ARCHAEOLOGICAL AND CULTURAL HERITAGE THEME SENSITIVITY ..... 13
  - MAP OF RELATIVE CIVIL AVIATION THEME SENSITIVITY ..... 14
  - MAP OF RELATIVE DEFENCE THEME SENSITIVITY ..... 15
  - MAP OF RELATIVE PALEONTOLOGY THEME SENSITIVITY ..... 16
  - MAP OF RELATIVE PLANT SPECIES THEME SENSITIVITY ..... 17
  - MAP OF RELATIVE TERRESTRIAL BIODIVERSITY THEME SENSITIVITY ..... 19

# Proposed Project Location

## Orientation map 1: General location



## Map of proposed site and relevant area(s)



## Cadastral details of the proposed site

Property details:

No	Farm Name	Farm/ Erf No	Portion	Latitude	Longitude	Property Type
1	GEORGE	3035	0	33°55'47.14S	22°28'44.3E	Erven
2	GEORGE	290	0	33°55'59.61S	22°27'47.07E	Erven
3	GEORGE	221	0	33°56'1.4S	22°28'51.34E	Erven
4	GEORGE	221	0	33°56'35.61S	22°29'43.44E	Erven
5	GEORGE	18285	0	33°56'17.61S	22°27'57.7E	Erven
6	GEORGE	290	0	33°56'12.32S	22°27'39.6E	Erven
7	CATCHMENT AREA 1	46	0	33°56'13.41S	22°7'36.34E	Farm
8	MALGASKRAAL	142	0	33°54'57.55S	22°25'48.72E	Farm
9	MODDERAAS KLOOF	132	0	33°52'14.43S	22°17'41.4E	Farm
10	KANDELAARSAND DOORN RIVIERS SPRUITEN	222	0	33°52'11.19S	22°11'46.75E	Farm
11	REUBEN	270	0	33°55'43.33S	22°8'56.75E	Farm
12	TOLBERG	139	0	33°54'34.26S	22°22'51.62E	Farm
13	PLATTE KLOOF	131	0	33°53'21.31S	22°21'14.87E	Farm
14	MENSCH-BOSCH	21	0	33°53'6.61S	22°9'18.03E	Farm
15		44	0	33°56'41.26S	22°7'23.89E	Farm
16	KOUWDOUW	88	0	33°51'49.34S	22°20'13.55E	Farm
17	CRADOCKS BERG	128	0	33°53'28.79S	22°29'25.64E	Farm
18	BOSCH-BERG	20	0	33°53'55.12S	22°7'14.99E	Farm
19	BRAK RIVIERS SPRUITEN	134	0	33°53'49.57S	22°11'1.69E	Farm
20		315	0	33°52'39.39S	22°20'20.72E	Farm
21	MODDERAAS KLOOF	133	0	33°51'54.91S	22°14'19.72E	Farm
22		339	0	33°52'47.33S	22°20'45.03E	Farm
23	MOORDKUYL	38	0	33°56'46.54S	22°8'29.81E	Farm
24	CATCHMENT AREA 2	25	0	33°55'28.46S	22°7'23E	Farm
25	OUTENIQUABERGE	352	0	33°53'6.35S	22°39'6.08E	Farm
26	BRAK RIVIERS SPRUITEN	134	0	33°54'20.85S	22°10'58.23E	Farm

						Portion
27		44	0	33°56'41.26S	22°7'23.89E	Farm Portion
28	OUTENIQUABERGE	352	1	33°54'2.4S	22°33'21.13E	Farm Portion
29	KOUWDOUW	88	16	33°52'17.74S	22°19'20.08E	Farm Portion
30	KOUWDOUW	88	17	33°52'19.29S	22°19'29.52E	Farm Portion
31	KANDELAARSAND DOORN RIVIERS SPRUITEN	222	0	33°52'11.19S	22°11'46.75E	Farm Portion
32	MENSCH-BOSCH	21	1	33°53'35.99S	22°9'18.39E	Farm Portion
33	BOSCH-BERG	20	0	33°53'55.12S	22°7'14.99E	Farm Portion
34	REUBEN	270	1	33°55'36.04S	22°8'25.45E	Farm Portion
35	CATCHMENT AREA 1	46	0	33°56'13.17S	22°8'8.6E	Farm Portion
36	MENSCH-BOSCH	21	0	33°52'36.45S	22°9'17.66E	Farm Portion
37	MOORDKUYL	38	6	33°56'47.7S	22°8'34.41E	Farm Portion
38	TOLBERG	139	0	33°54'38.57S	22°22'51.96E	Farm Portion
39	MALGASKRAAL	142	9	33°55'48.21S	22°25'39.61E	Farm Portion
40	OUTENIQUABERGE	352	2	33°57'2.64S	22°32'54.87E	Farm Portion
41	OUTENIQUABERGE	352	3	33°57'19.86S	22°31'14.62E	Farm Portion
42	TOLBERG	139	0	33°54'34.26S	22°22'51.62E	Farm Portion
43	KOUWDOUW	88	19	33°52'18.85S	22°19'55.72E	Farm Portion
44	BRAK RIVIERS SPRUITEN	134	1	33°53'1.27S	22°11'6.49E	Farm Portion
45	PLATTE KLOOF	131	3	33°53'25.49S	22°22'17.85E	Farm Portion
46	KOUWDOUW	88	73	33°52'22.98S	22°19'3.44E	Farm Portion
47	KOUWDOUW	88	18	33°52'20.41S	22°19'40.64E	Farm Portion
48	MODDERAAS KLOOF	132	0	33°52'14.43S	22°17'41.4E	Farm Portion
49	CATCHMENT AREA 2	25	0	33°55'28.46S	22°7'23E	Farm Portion
50	MOORDKUYL	38	17	33°56'38.95S	22°8'9.84E	Farm Portion
51	MODDERAAS KLOOF	133	0	33°51'54.91S	22°14'19.72E	Farm Portion
52	PLATTE KLOOF	131	5	33°53'7.49S	22°20'57.08E	Farm Portion
53	PLATTE KLOOF	131	1	33°53'13.45S	22°21'33.64E	Farm Portion
54	CRADOCKS BERG	128	0	33°53'28.79S	22°29'25.65E	Farm Portion
55	MALGASKRAAL	142	4	33°55'40.79S	22°26'38.7E	Farm Portion
56	MALGASKRAAL	142	2	33°55'39.97S	22°25'5.16E	Farm Portion

57	MALGASKRAAL	142	0	33°54'25.96S	22°25'56.7E	Farm Portion
58	KOUWDOUW	88	20	33°52'11.45S	22°20'13.41E	Farm Portion
59	KOUWDOUW	88	59	33°52'29.51S	22°19'59.78E	Farm Portion
60		339	0	33°52'47.33S	22°20'45.03E	Farm Portion
61	PLATTE KLOOF	131	0	33°53'20.26S	22°20'6.78E	Farm Portion
62	PLATTE KLOOF	131	4	33°53'3.55S	22°20'40.32E	Farm Portion
63		315	0	33°52'39.39S	22°20'20.72E	Farm Portion
64	PLATTE KLOOF	131	1	33°53'10.44S	22°21'33.33E	Farm Portion
65	PLATTE KLOOF	131	7	33°53'20.92S	22°21'36.75E	Farm Portion
66	PLATTE KLOOF	131	8	33°53'26.76S	22°22'31.35E	Farm Portion
67	PLATTE KLOOF	131	9	33°53'28.05S	22°22'10.83E	Farm Portion
68	MENSCH-BOSCH	21	0	33°52'34.33S	22°9'17.29E	Farm Portion
69	MALGASKRAAL	142	9	33°55'46.52S	22°25'39.4E	Farm Portion
70	MALGASKRAAL	142	0	33°54'27.27S	22°25'56.56E	Farm Portion
71	OUTENIQUABERGE	125	0	33°54'4.83S	22°33'21.1E	Farm Portion
72		336	0	33°56'1.89S	22°31'5E	Farm Portion

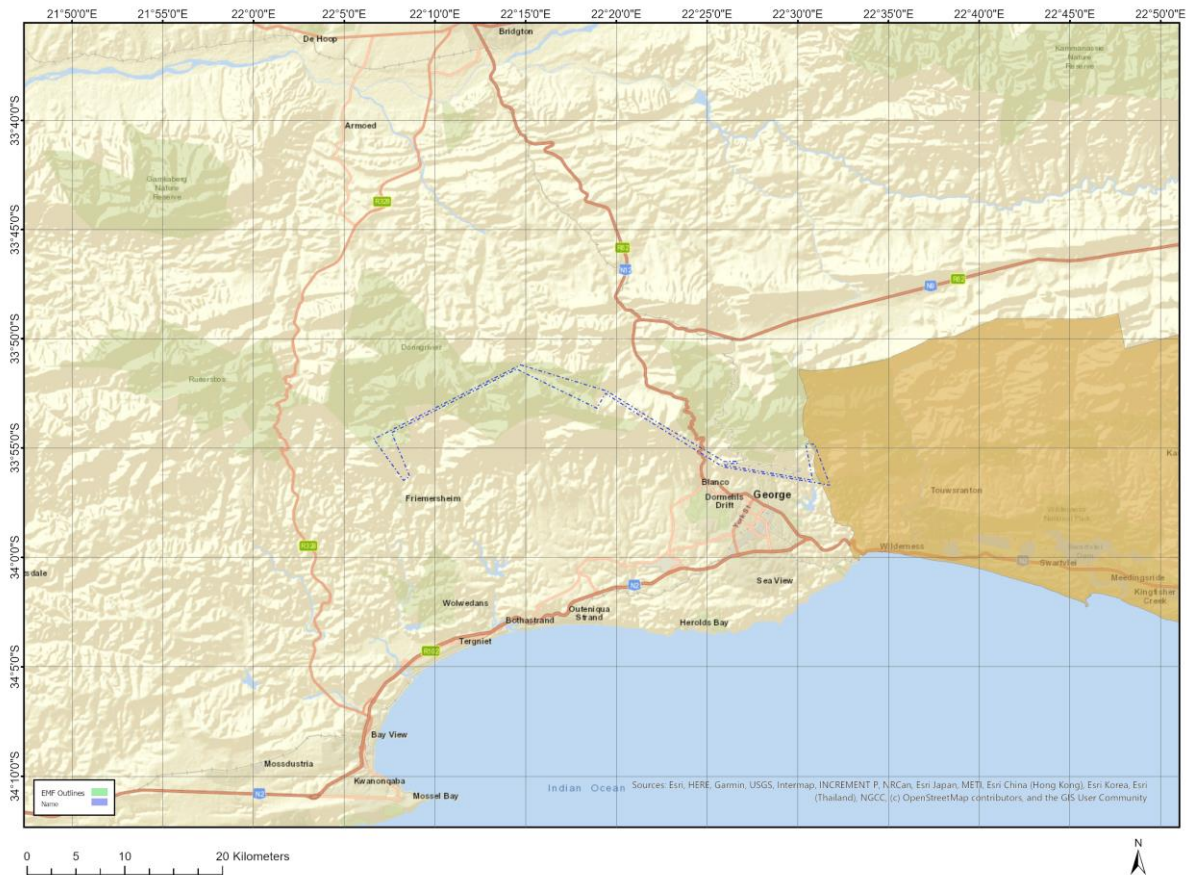
Development footprint<sup>1</sup> vertices:  
No development footprint(s) specified.

### Wind and Solar developments with an approved Environmental Authorisation or applications under consideration within 30 km of the proposed area

No	EIA Reference No	Classification	Status of application	Distance from proposed area (km)
1	12/12/20/2536/AM4	Wind	Approved	25.2
2	14/12/16/3/3/1/1292/AM1	Solar PV	Approved	10.5
3	12/12/20/2536/AM3	Wind	Approved	25.2
4	12/12/20/1815/1	Wind	Approved	28.2
5	14/12/16/3/3/1/1292	Solar PV	Approved	10.5
6	12/12/20/2536	Wind	Approved	25.2

<sup>1</sup> “development footprint”, means the area within the site on which the development will take place and includes all ancillary developments for example roads, power lines, boundary walls, paving etc. which require vegetation clearance or which will be disturbed and for which the application has been submitted.

## Environmental Management Frameworks relevant to the application



Environmental Management Framework	LINK
Garden Route EMF	<a href="https://screening.environment.gov.za/ScreeningDownloads/EMF/garden_route_finalreport.pdf">https://screening.environment.gov.za/ScreeningDownloads/EMF/garden_route_finalreport.pdf</a>

## Environmental screening results and assessment outcomes

The following sections contain a summary of any development incentives, restrictions, exclusions or prohibitions that apply to the proposed development site as well as the most environmental sensitive features on the site based on the site sensitivity screening results for the application classification that was selected. The application classification selected for this report is: **Transformation of land | Indigenous vegetation.**

### Relevant development incentives, restrictions, exclusions or prohibitions

The following development incentives, restrictions, exclusions or prohibitions and their implications that apply to this site are indicated below.

Incentive, restriction or prohibition	Implication
Strategic Gas Pipeline Corridors-Phase 2: Mossel	<a href="https://screening.environment.gov.za/ScreeningDownloads/Developmen">https://screening.environment.gov.za/ScreeningDownloads/Developmen</a>

Bay to Coega	<a href="#">tZones/Combined_GAS.pdf</a>
Garden Route National Park Buffer	<a href="https://screening.environment.gov.za/ScreeningDownloads/DevelopmentZones/grnp_approved_plan.pdf">https://screening.environment.gov.za/ScreeningDownloads/DevelopmentZones/grnp_approved_plan.pdf</a>
South African Protected Areas	<a href="https://screening.environment.gov.za/ScreeningDownloads/DevelopmentZones/SAPAD_OR_2025_Q1_Metadata.pdf">https://screening.environment.gov.za/ScreeningDownloads/DevelopmentZones/SAPAD_OR_2025_Q1_Metadata.pdf</a>
South African Conservation Areas	<a href="https://screening.environment.gov.za/ScreeningDownloads/DevelopmentZones/SACAD_OR_2025_Q1_Metadata.pdf">https://screening.environment.gov.za/ScreeningDownloads/DevelopmentZones/SACAD_OR_2025_Q1_Metadata.pdf</a>

### Proposed Development Area Environmental Sensitivity

The following summary of the development site environmental sensitivities is identified. Only the highest environmental sensitivity is indicated. The footprint environmental sensitivities for the proposed development footprint as identified, are indicative only and must be verified on site by a suitably qualified person before the specialist assessments identified below can be confirmed.

Theme	Very High sensitivity	High sensitivity	Medium sensitivity	Low sensitivity
Agriculture Theme	X			
Animal Species Theme		X		
Aquatic Biodiversity Theme	X			
Archaeological and Cultural Heritage Theme	X			
Civil Aviation Theme		X		
Defence Theme				X
Paleontology Theme		X		
Plant Species Theme		X		
Terrestrial Biodiversity Theme	X			

### Specialist assessments identified

Based on the selected classification, and the known impacts associated with the proposed development, the following list of specialist assessments have been identified for inclusion in the assessment report. It is the responsibility of the EAP to confirm this list and to motivate in the assessment report, the reason for not including any of the identified specialist study including the provision of photographic evidence of the site situation.

No	Specialist assessment	Assessment Protocol
1	Landscape/Visual Impact Assessment	<a href="https://screening.environment.gov.za/ScreeningDownloads/AssessmentProtocols/Gazetted_General_Requirement_Assessment_Protocols.pdf">https://screening.environment.gov.za/ScreeningDownloads/AssessmentProtocols/Gazetted_General_Requirement_Assessment_Protocols.pdf</a>
2	Archaeological and Cultural Heritage Impact Assessment	<a href="https://screening.environment.gov.za/ScreeningDownloads/AssessmentProtocols/GuidanceforHIA.pdf">https://screening.environment.gov.za/ScreeningDownloads/AssessmentProtocols/GuidanceforHIA.pdf</a>
3	Palaeontology Impact Assessment	<a href="https://screening.environment.gov.za/ScreeningDownloads/AssessmentProtocols/GuidanceforPIA.pdf">https://screening.environment.gov.za/ScreeningDownloads/AssessmentProtocols/GuidanceforPIA.pdf</a>
4	Terrestrial Biodiversity Impact Assessment	<a href="https://screening.environment.gov.za/ScreeningDownloads/AssessmentProtocols/Gazetted_Terrestrial_Biodiversity_Assessment_Protocols.pdf">https://screening.environment.gov.za/ScreeningDownloads/AssessmentProtocols/Gazetted_Terrestrial_Biodiversity_Assessment_Protocols.pdf</a>
5	Aquatic Biodiversity Impact Assessment	<a href="https://screening.environment.gov.za/ScreeningDownloads/AssessmentProtocols/Gazetted_Aquatic_Biodiversity_Assessment_Protocols.pdf">https://screening.environment.gov.za/ScreeningDownloads/AssessmentProtocols/Gazetted_Aquatic_Biodiversity_Assessment_Protocols.pdf</a>

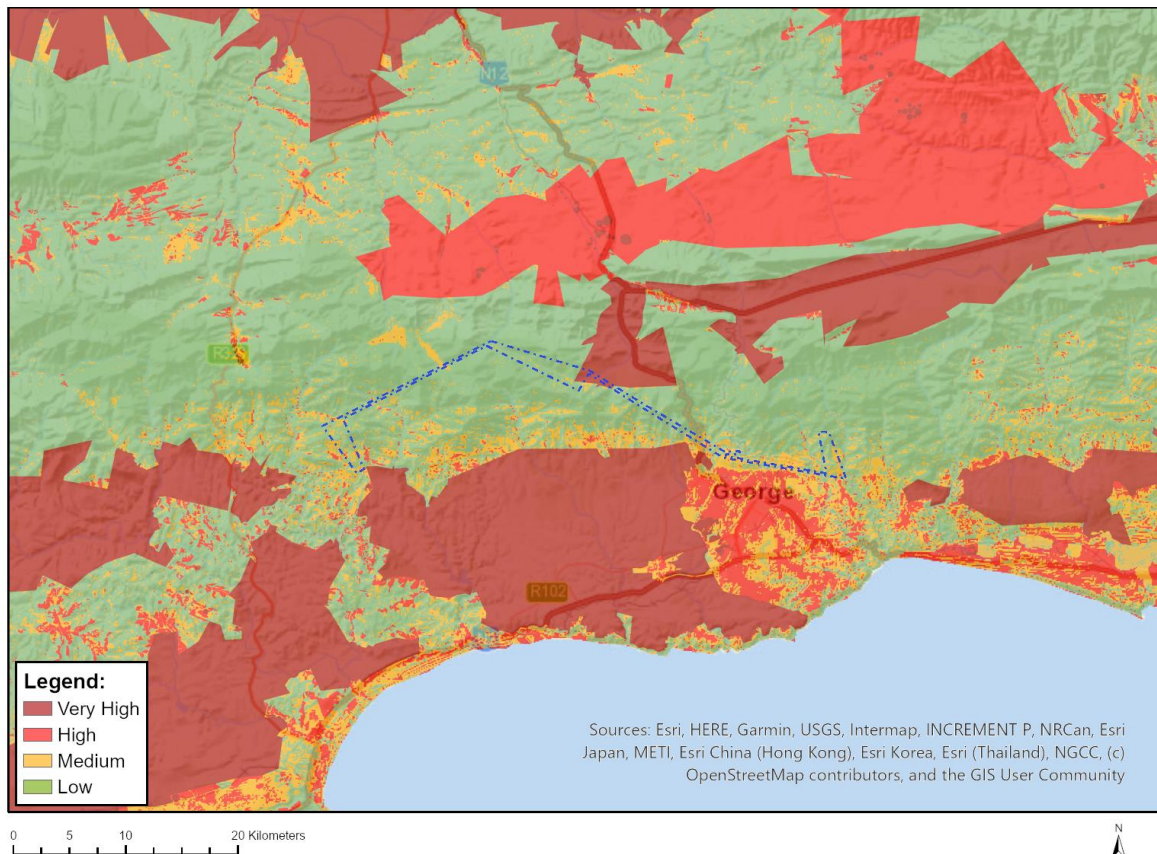
		<a href="#">otocols.pdf</a>
6	Socio-Economic Assessment	<a href="https://screening.environment.gov.za/ScreeningDownloads/AssessmentProtocols/Gazetted_General_Requirement_Assessment_Protocols.pdf">https://screening.environment.gov.za/ScreeningDownloads/AssessmentProtocols/Gazetted_General_Requirement_Assessment_Protocols.pdf</a>
7	Plant Species Assessment	<a href="https://screening.environment.gov.za/ScreeningDownloads/AssessmentProtocols/Gazetted_Plant_Species_Assessment_Protocols.pdf">https://screening.environment.gov.za/ScreeningDownloads/AssessmentProtocols/Gazetted_Plant_Species_Assessment_Protocols.pdf</a>
8	Animal Species Assessment	<a href="https://screening.environment.gov.za/ScreeningDownloads/AssessmentProtocols/Gazetted_Animal_Species_Assessment_Protocols.pdf">https://screening.environment.gov.za/ScreeningDownloads/AssessmentProtocols/Gazetted_Animal_Species_Assessment_Protocols.pdf</a>

OFFICIAL

## Results of the environmental sensitivity of the proposed area.

The following section represents the results of the screening for environmental sensitivity of the proposed site for relevant environmental themes associated with the project classification. It is the duty of the EAP to ensure that the environmental themes provided by the screening tool are comprehensive and complete for the project. Refer to the disclaimer.

### MAP OF RELATIVE AGRICULTURE THEME SENSITIVITY



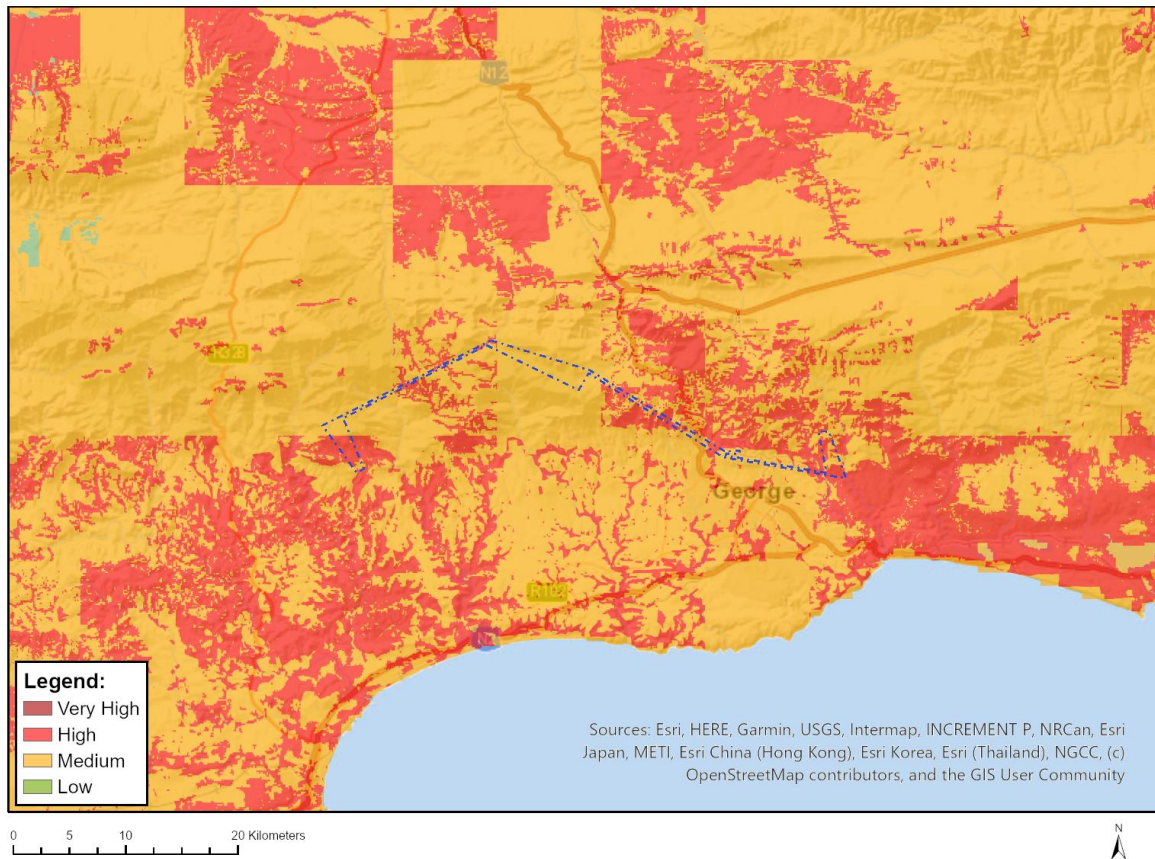
Very High sensitivity	High sensitivity	Medium sensitivity	Low sensitivity
X			

#### Sensitivity Features:

Sensitivity	Feature(s)
High	Rainfed Annual Crop Cultivation / Planted Pastures
High	08. Moderate
High	09. Moderate-High
Low	04. Low-Very low
Low	05. Low
Low	03. Low-Very low
Low	01. Very low
Low	02. Very low
Medium	06. Low-Moderate
Medium	07. Low-Moderate

Very High	Horticulture
Very High	Non-pivot Irrigated Annual Crop Cultivation / Planted Pastures
Very High	Viticulture
Very High	Outeniqua PAA

## MAP OF RELATIVE ANIMAL SPECIES THEME SENSITIVITY



Where only a sensitive plant unique number or sensitive animal unique number is provided in the screening report and an assessment is required, the environmental assessment practitioner (EAP) or specialist is required to email SANBI at [eiadatarequests@sanbi.org.za](mailto:eiadatarequests@sanbi.org.za) listing all sensitive species with their unique identifiers for which information is required. The name has been withheld as the species may be prone to illegal harvesting and must be protected. SANBI will release the actual species name after the details of the EAP or specialist have been documented.

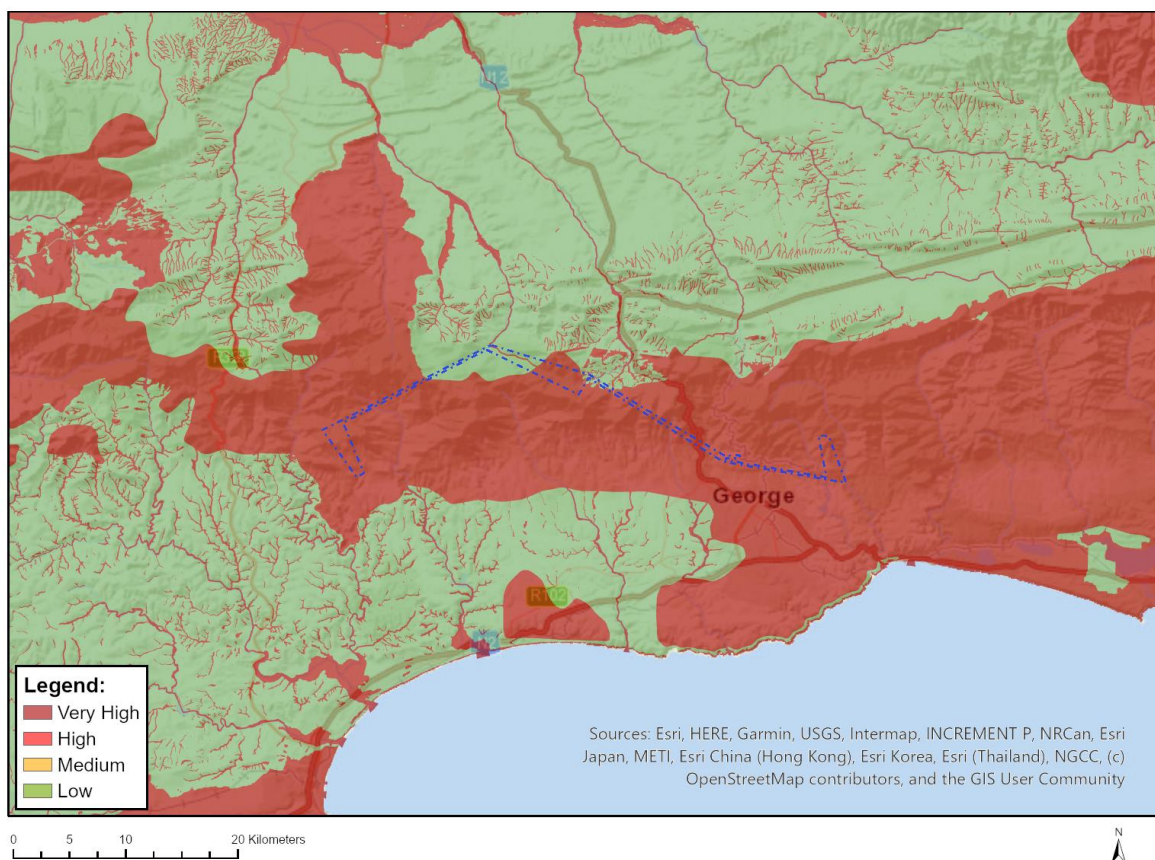
Very High sensitivity	High sensitivity	Medium sensitivity	Low sensitivity
	X		

### Sensitivity Features:

Sensitivity	Feature(s)
High	Amphibia-Afrixalus knysnae
High	Aves-Circus maurus
High	Aves-Stephanoaetus coronatus
High	Aves-Bradypterus sylvaticus
High	Aves-Circus ranivorus
High	Aves-Polemaetus bellicosus
High	Aves-Sarothrura affinis
High	Aves-Turnix hottentottus

Medium	Amphibia-Afrixalus knysnae
Medium	Aves-Circus ranivorus
Medium	Aves-Circus maurus
Medium	Aves-Stephanoaetus coronatus
Medium	Aves-Bradypterus sylvaticus
Medium	Aves-Sarothrura affinis
Medium	Aves-Turnix hottentottus
Medium	Insecta-Tsitana dicksoni
Medium	Mammalia-Chlorotalpa duthieae
Medium	Sensitive species 8
Medium	Invertebrate-Forest invertebrate
Medium	Invertebrate-Aneuryphymus montanus
Medium	Arachnida-Chumma striata

## MAP OF RELATIVE AQUATIC BIODIVERSITY THEME SENSITIVITY



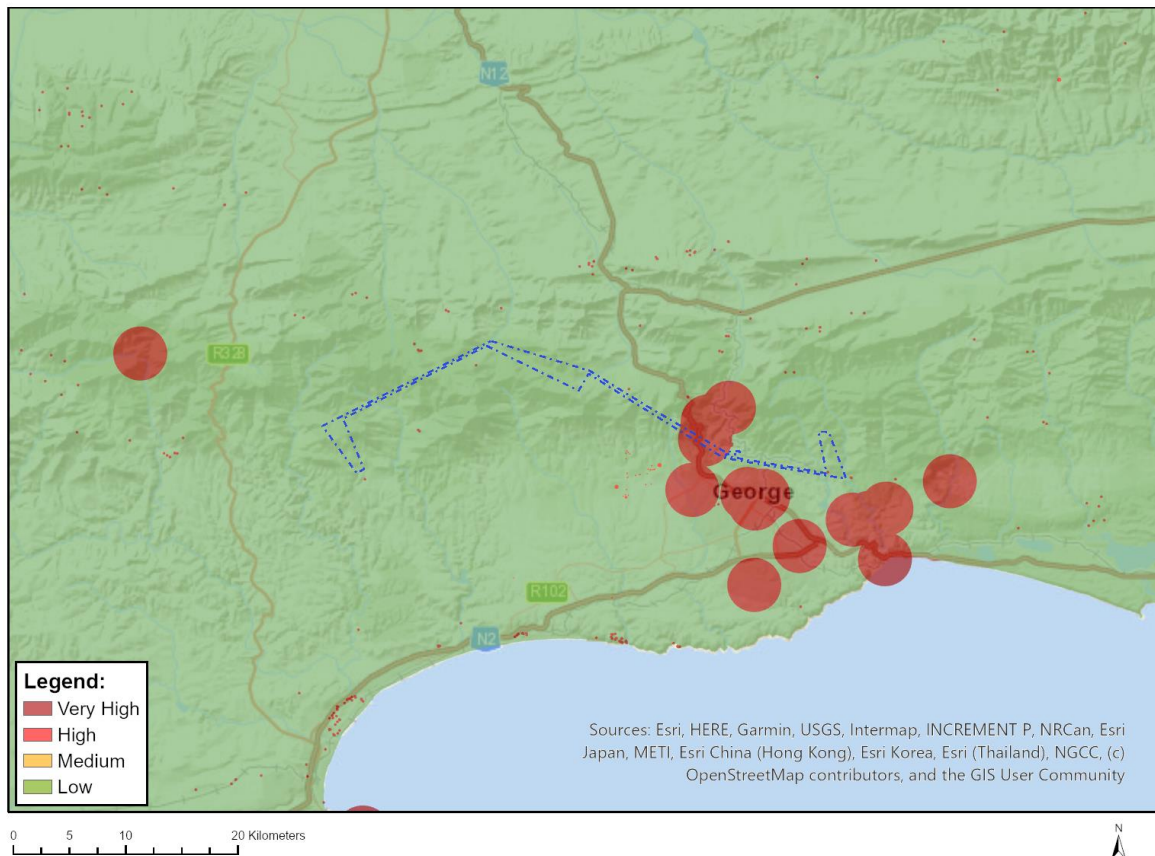
Very High sensitivity	High sensitivity	Medium sensitivity	Low sensitivity
X			

### Sensitivity Features:

Sensitivity	Feature(s)
Low	Low Sensitivity
Very High	CBA: River
Very High	CBA: Wetland
Very High	ESA 1: Aquatic

Very High	Wetlands_Channelled valley-bottom
Very High	Wetlands_Seep
Very High	Wetlands_Unchannelled valley-bottom
Very High	FEPA Subcatchment
Very High	Rivers
Very High	SWSA (sw)_Outeniqua

## MAP OF RELATIVE ARCHAEOLOGICAL AND CULTURAL HERITAGE THEME SENSITIVITY

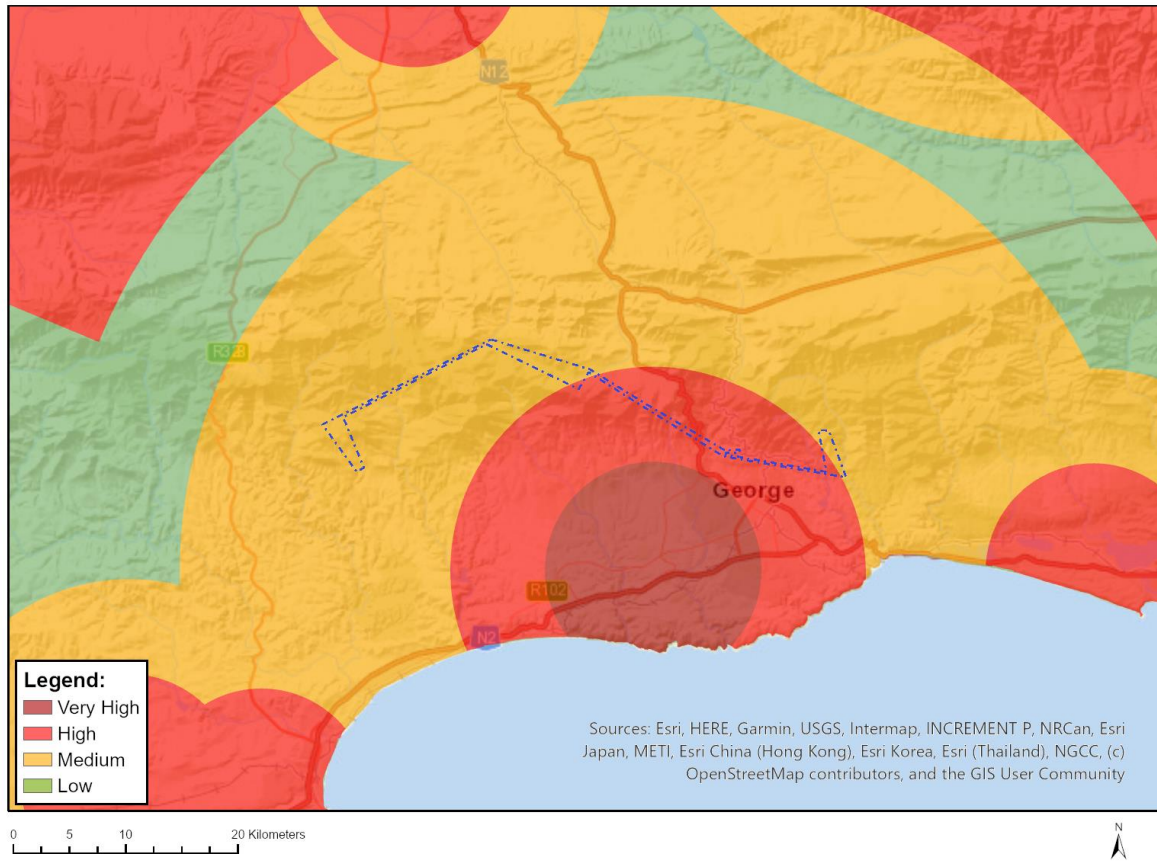


Very High sensitivity	High sensitivity	Medium sensitivity	Low sensitivity
X			

### Sensitivity Features:

Sensitivity	Feature(s)
Low	Low Sensitivity
Very High	Within 2km of a Grade II Heritage site
Very High	Within 100m of an Ungraded Heritage site

## MAP OF RELATIVE CIVIL AVIATION THEME SENSITIVITY

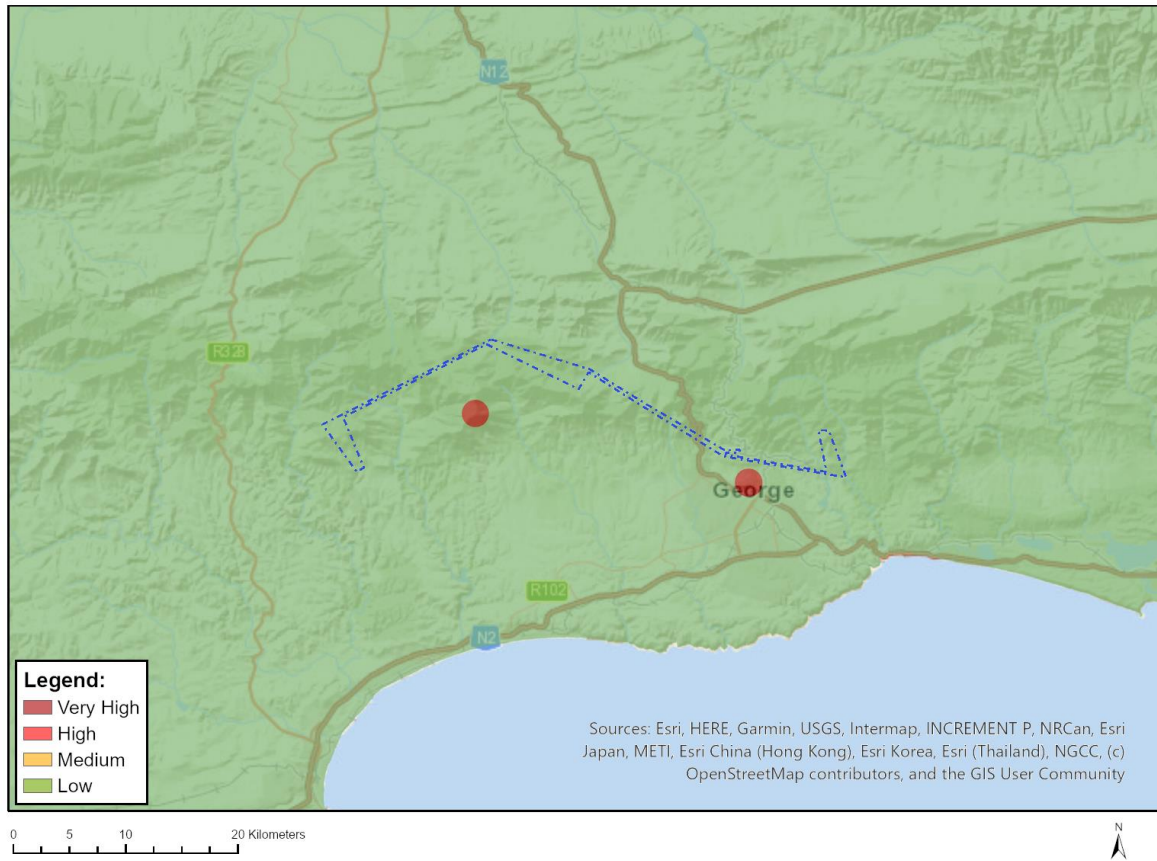


Very High sensitivity	High sensitivity	Medium sensitivity	Low sensitivity
	X		

### Sensitivity Features:

Sensitivity	Feature(s)
High	Within 15 km of a civil aviation radar
High	Between 8 and 15 km from a major civil aviation aerodrome
Medium	Between 15 and 35 km from a civil aviation radar
Medium	Between 15 and 35 km from a major civil aviation aerodrome

## MAP OF RELATIVE DEFENCE THEME SENSITIVITY

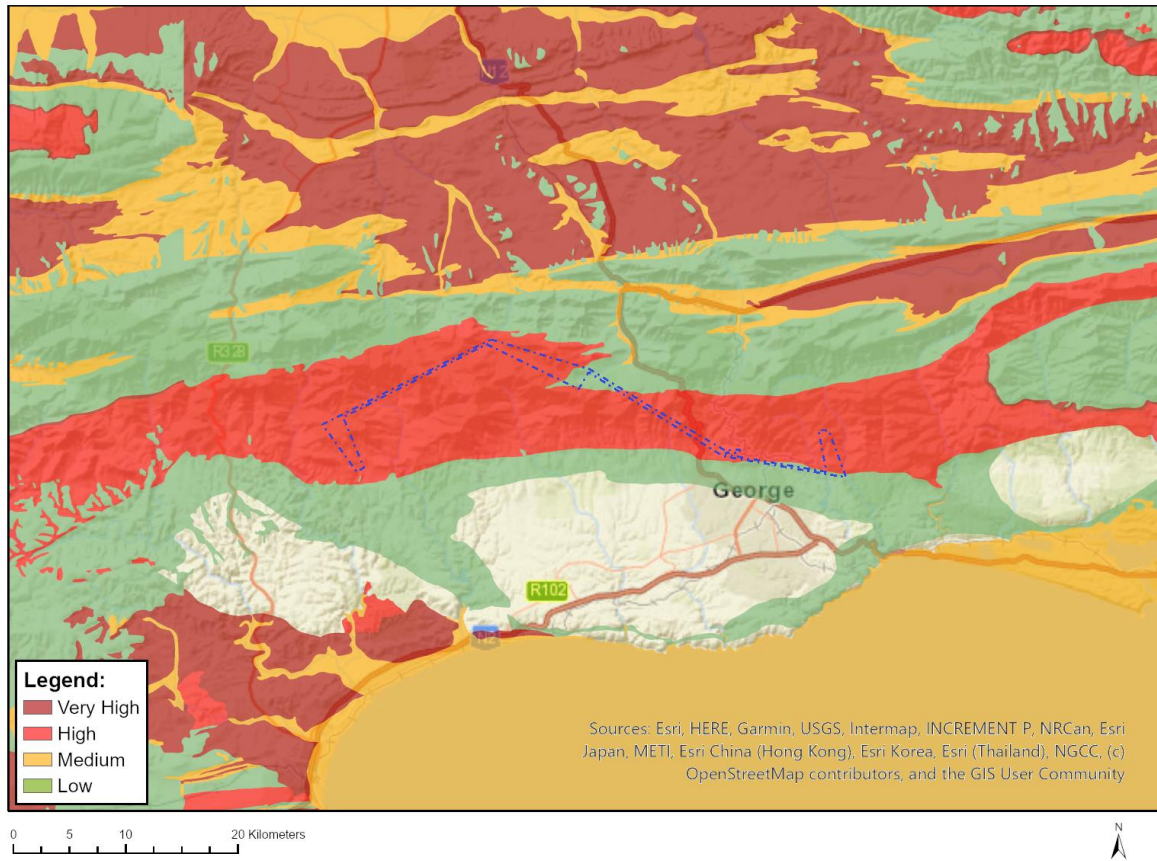


Very High sensitivity	High sensitivity	Medium sensitivity	Low sensitivity
			X

### Sensitivity Features:

Sensitivity	Feature(s)
Low	Low Sensitivity

## MAP OF RELATIVE PALEONTOLOGY THEME SENSITIVITY

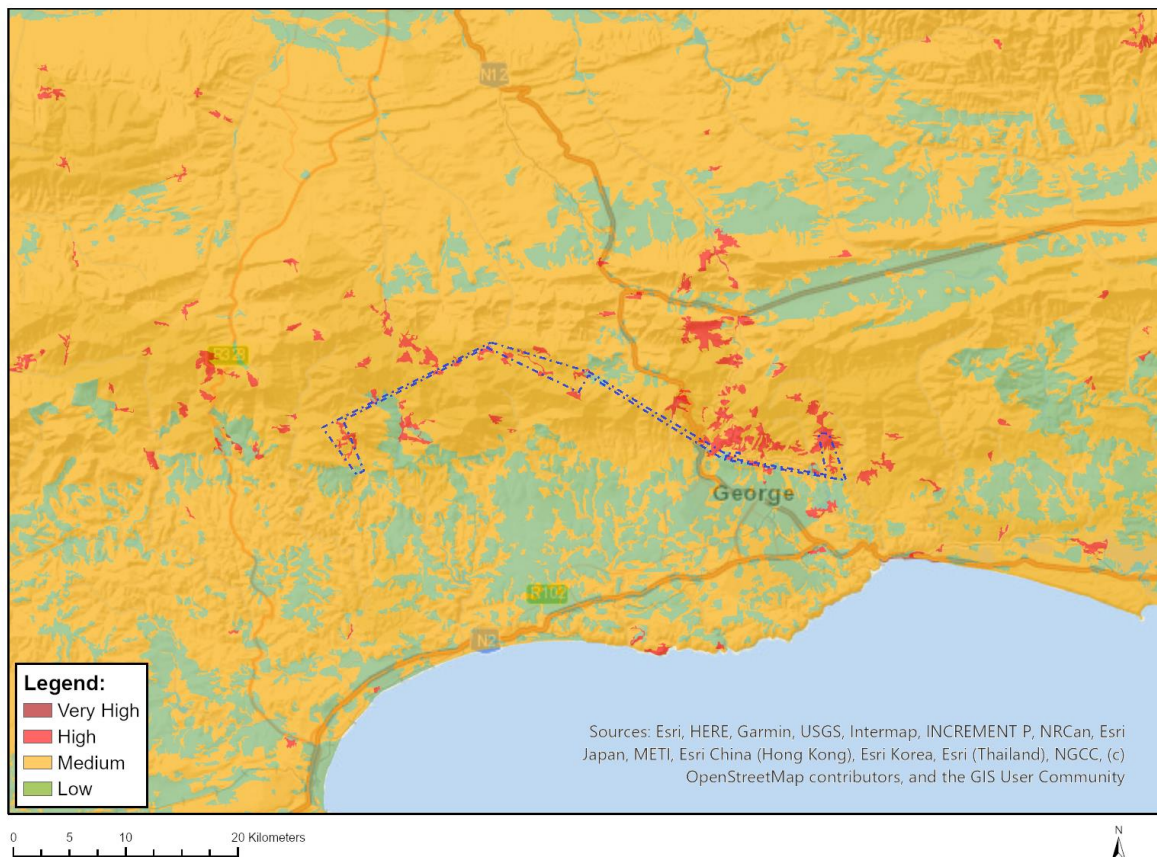


Very High sensitivity	High sensitivity	Medium sensitivity	Low sensitivity
	X		

### Sensitivity Features:

Sensitivity	Feature(s)
High	Features with a High paleontological sensitivity
Low	Features with a Low paleontological sensitivity

## MAP OF RELATIVE PLANT SPECIES THEME SENSITIVITY



Where only a sensitive plant unique number or sensitive animal unique number is provided in the screening report and an assessment is required, the environmental assessment practitioner (EAP) or specialist is required to email SANBI at [eiadatarequests@sanbi.org.za](mailto:eiadatarequests@sanbi.org.za) listing all sensitive species with their unique identifiers for which information is required. The name has been withheld as the species may be prone to illegal harvesting and must be protected. SANBI will release the actual species name after the details of the EAP or specialist have been documented.

Very High sensitivity	High sensitivity	Medium sensitivity	Low sensitivity
	X		

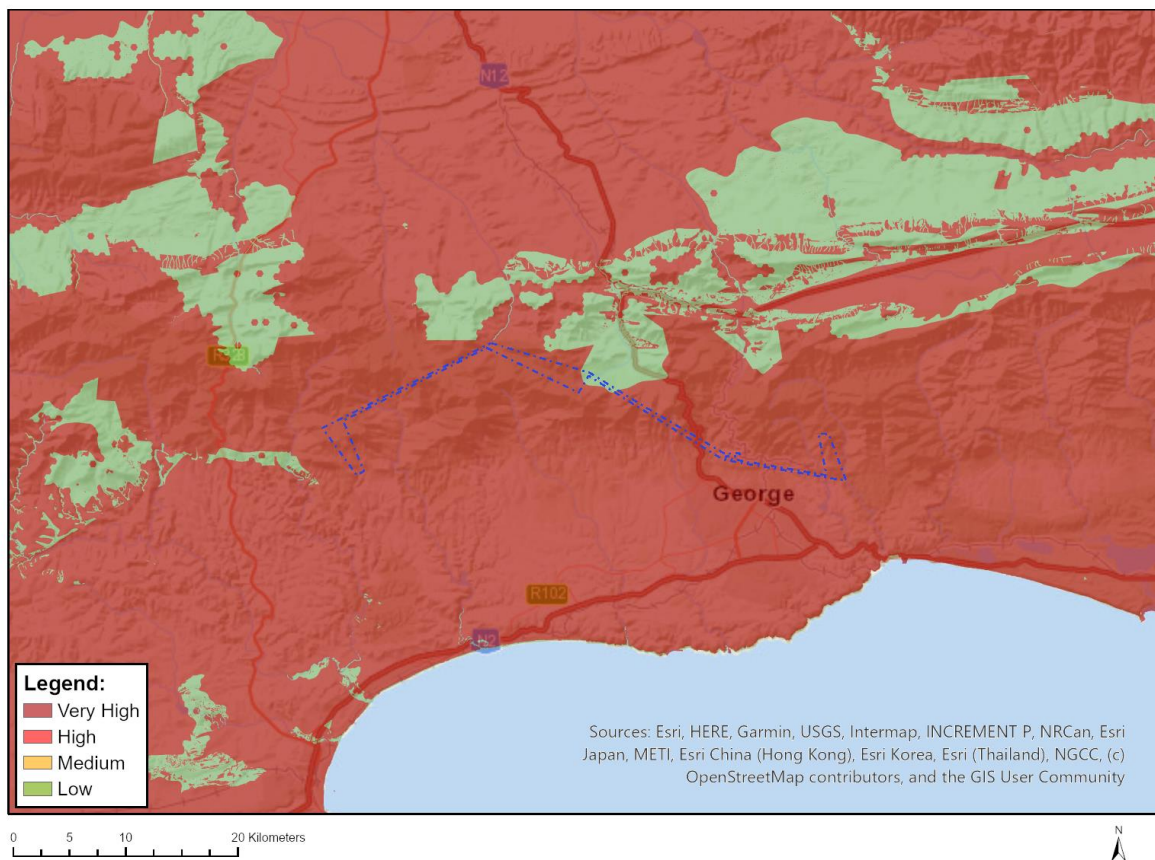
### Sensitivity Features:

Sensitivity	Feature(s)
High	Ocotea bullata
High	Amphithalea axillaris
High	Psoralea diturnerae
High	Leucadendron olens
High	Leucospermum glabrum
High	Mimetes pauciflorus
High	Lobelia ardisiandroides
High	Erica aneimensa
High	Erica unicolor subsp. georgensis
High	Erica croceovirens
High	Sensitive species 1077
High	Acmadenia gracilis
High	Psoralea trullata

Low	Low Sensitivity
Medium	<i>Faurea macnaughtonii</i>
Medium	<i>Ocotea bullata</i>
Medium	<i>Amphithalea axillaris</i>
Medium	<i>Argyrobium rarum</i>
Medium	<i>Psoralea</i> sp. nov. (Stirton & Zantovska 11582 NU)
Medium	<i>Psoralea diturnerae</i>
Medium	<i>Aspalathus bowieana</i>
Medium	<i>Aspalathus digitifolia</i>
Medium	<i>Aspalathus glabrescens</i>
Medium	<i>Aspalathus pedunculata</i>
Medium	<i>Otholobium racemosum</i>
Medium	<i>Rafnia vlokii</i>
Medium	<i>Lotononis elongata</i>
Medium	<i>Lotononis filiformis</i>
Medium	<i>Amauropelta knysnaensis</i>
Medium	<i>Thesium susannae</i>
Medium	<i>Berzelia galpinii</i>
Medium	<i>Leucadendron olens</i>
Medium	<i>Leucospermum formosum</i>
Medium	<i>Leucospermum glabrum</i>
Medium	<i>Leucospermum hamatum</i>
Medium	<i>Mimetes chrysanthus</i>
Medium	<i>Mimetes pauciflorus</i>
Medium	<i>Mimetes splendidus</i>
Medium	<i>Harveya rosealba</i>
Medium	<i>Selago burchellii</i>
Medium	<i>Nemesia elata</i>
Medium	<i>Pentameris uniflora</i>
Medium	<i>Psydrax capensis</i>
Medium	<i>Freesia fergusoniae</i>
Medium	Sensitive species 700
Medium	Sensitive species 1081
Medium	<i>Lobelia ardisiandroides</i>
Medium	Sensitive species 419
Medium	<i>Oxalis fourcadei</i>
Medium	<i>Oxalis stellata</i> var. <i>gracilior</i>
Medium	<i>Erica aneimensa</i>
Medium	<i>Erica gillii</i>
Medium	<i>Erica inconstans</i>
Medium	<i>Erica ingeana</i>
Medium	<i>Erica stylaris</i>
Medium	<i>Erica zebrensis</i>
Medium	<i>Erica zwartbergensis</i>
Medium	<i>Erica vlokii</i>
Medium	<i>Erica outeniquae</i>
Medium	<i>Erica velatiflora</i>
Medium	<i>Erica intermedia</i> subsp. <i>albiflora</i>
Medium	<i>Erica unicolor</i> subsp. <i>mutica</i>
Medium	<i>Erica unicolor</i> subsp. <i>georgensis</i>
Medium	<i>Erica croceovirens</i>
Medium	<i>Erica glandulosa</i> subsp. <i>fourcadei</i>
Medium	Sensitive species 1077
Medium	Sensitive species 25
Medium	<i>Thamnochortus karooica</i>
Medium	Sensitive species 820
Medium	Sensitive species 1277
Medium	Sensitive species 514
Medium	Sensitive species 873
Medium	<i>Acrolophia ustulata</i>

Medium	Sensitive species 1024
Medium	Zyrphelis outeniquae
Medium	Osteospermum pterigoideum
Medium	Agathosma rehmanniana
Medium	Acmadenia burchellii
Medium	Acmadenia gracilis
Medium	Acmadenia rupicola
Medium	Muraltia knysnaensis
Medium	Sensitive species 980
Medium	Psoralea trullata
Medium	Aristea nana
Medium	Sensitive species 1171
Medium	Romulea jugicola
Medium	Romulea vlokii
Medium	Erica glumiflora
Medium	Erica inamoena
Medium	Erica setulosa
Medium	Elegia squamosa
Medium	Sensitive species 728
Medium	Pachites bodkinii
Medium	Acrolophia lunata
Medium	Sensitive species 763
Medium	Pterygodium cleistogamum
Medium	Diosma passerinoides

### MAP OF RELATIVE TERRESTRIAL BIODIVERSITY THEME SENSITIVITY



Very High sensitivity	High sensitivity	Medium sensitivity	Low sensitivity
X			

**Sensitivity Features:**

Sensitivity	Feature(s)
Low	Low Sensitivity
Very High	CBA: Terrestrial
Very High	CBA2: Terrestrial
Very High	ESA 2: Restore from other land use
Very High	FEPA Subcatchment
Very High	Indigenous forest_Southern Afrotemperate Forest
Very High	SWSA (sw)_Outeniqua
Very High	Doringrivier Wilderness Area
Very High	Garden Route National Park
Very High	Cape Floral Region Protected Areas
Very High	National Protected Area Expansion Strategy (NPAES)
Very High	SANParks PAES (2025)
Very High	EN_Garden Route Shale Fynbos

OFFICIAL