

**SCREENING REPORT FOR AN ENVIRONMENTAL AUTHORIZATION AS
REQUIRED BY THE 2014 EIA REGULATIONS – PROPOSED SITE
ENVIRONMENTAL SENSITIVITY**

EIA Reference number: TBC

Project name: Swartberg

Project title: Swartberg

Date screening report generated: 15/09/2025 14:37:26

Applicant: CapeNature

Compiler: Cape EAPrac

Compiler signature:
.....

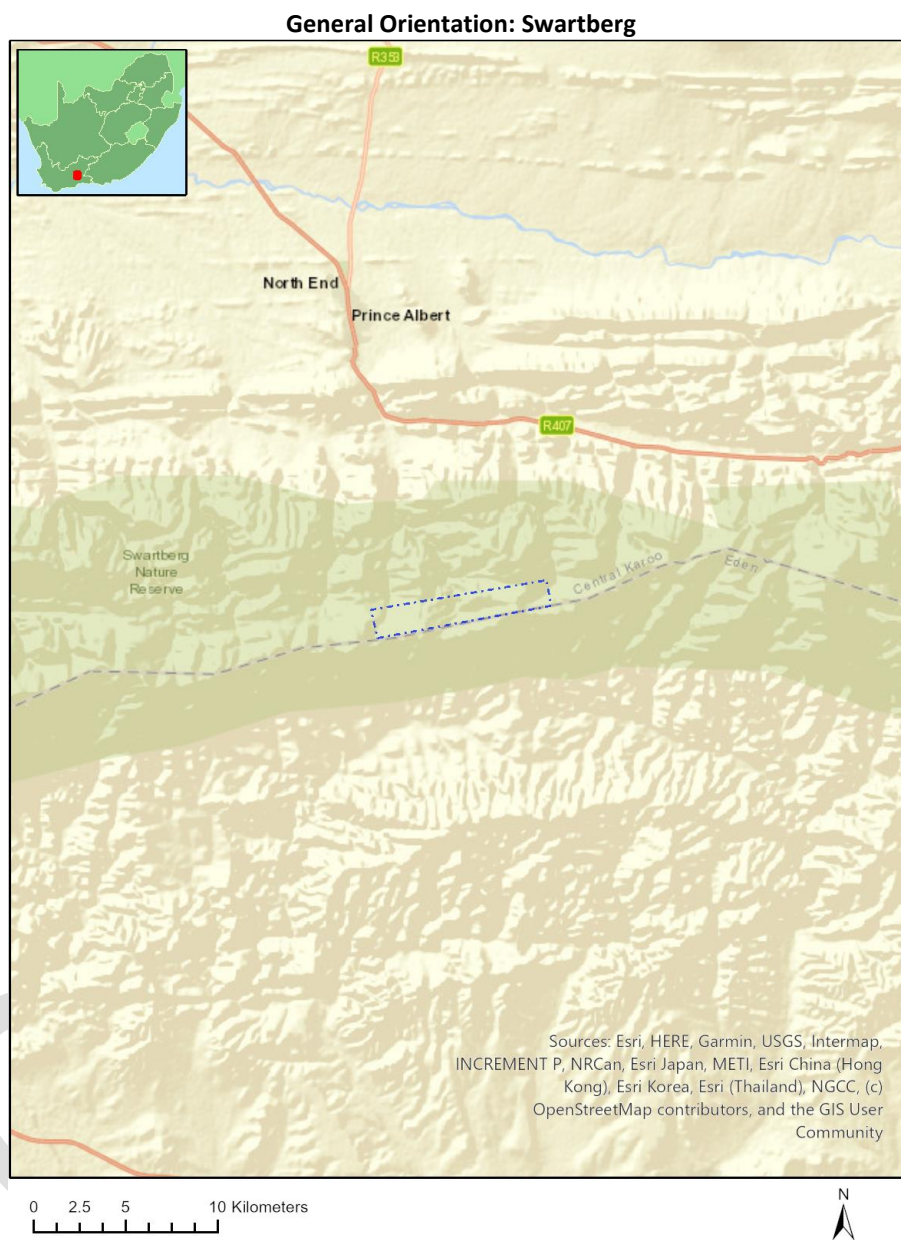
Application Category: Transformation of land | Indigenous vegetation

Table of Contents

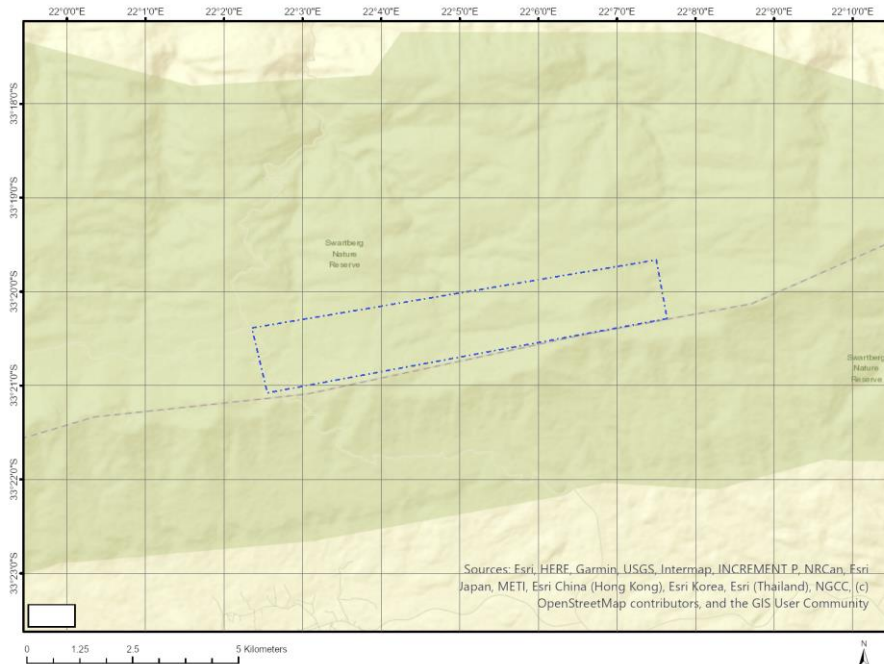
- Proposed Project Location 3
 - Orientation map 1: General location 3
- Map of proposed site and relevant area(s) 4
 - Cadastral details of the proposed site 4
 - Wind and Solar developments with an approved Environmental Authorisation or applications under consideration within 30 km of the proposed area 4
 - Environmental Management Frameworks relevant to the application 5
- Environmental screening results and assessment outcomes 5
 - Relevant development incentives, restrictions, exclusions or prohibitions 5
 - Proposed Development Area Environmental Sensitivity 5
 - Specialist assessments identified 6
- Results of the environmental sensitivity of the proposed area 7
 - MAP OF RELATIVE ANIMAL SPECIES THEME SENSITIVITY 7
 - MAP OF RELATIVE AQUATIC BIODIVERSITY THEME SENSITIVITY 8
 - MAP OF RELATIVE ARCHAEOLOGICAL AND CULTURAL HERITAGE THEME SENSITIVITY 9
 - MAP OF RELATIVE CIVIL AVIATION THEME SENSITIVITY 10
 - MAP OF RELATIVE DEFENCE THEME SENSITIVITY 11
 - MAP OF RELATIVE PALEONTOLOGY THEME SENSITIVITY 12
 - MAP OF RELATIVE PLANT SPECIES THEME SENSITIVITY 13
 - MAP OF RELATIVE TERRESTRIAL BIODIVERSITY THEME SENSITIVITY 15

Proposed Project Location

Orientation map 1: General location



Map of proposed site and relevant area(s)



Cadastral details of the proposed site

Property details:

No	Farm Name	Farm/ Erf No	Portion	Latitude	Longitude	Property Type
1	DORPS RIVIER	191	0	33°20'4.8S	22°4'49.17E	Farm
2	DE WETSVLEY	192	0	33°20'22.85S	22°1'15.64E	Farm
3	GOUSBERG	188	0	33°19'12.27S	22°7'35.85E	Farm
4	GOUSBERG	188	0	33°19'12.27S	22°7'35.85E	Farm Portion
5	DORPS RIVIER	191	0	33°20'4.64S	22°4'27.17E	Farm Portion
6	DE WETSVLEY	192	1	33°20'24.98S	22°2'24.39E	Farm Portion
7	DE WETSVLEY	192	0	33°20'24.21S	22°1'0.85E	Farm Portion

Development footprint¹ vertices:

No development footprint(s) specified.

Wind and Solar developments with an approved Environmental Authorisation or applications under consideration within 30 km of the proposed area

No	EIA Reference No	Classification	Status of application	Distance from proposed area (km)
1	14/12/16/3/3/1/2464	Wind	Approved	22.6

¹ "development footprint", means the area within the site on which the development will take place and includes all ancillary developments for example roads, power lines, boundary walls, paving etc. which require vegetation clearance or which will be disturbed and for which the application has been submitted.

Environmental Management Frameworks relevant to the application

No intersections with EMF areas found.

Environmental screening results and assessment outcomes

The following sections contain a summary of any development incentives, restrictions, exclusions or prohibitions that apply to the proposed development site as well as the most environmental sensitive features on the site based on the site sensitivity screening results for the application classification that was selected. The application classification selected for this report is:

Transformation of land | Indigenous vegetation.

Relevant development incentives, restrictions, exclusions or prohibitions

The following development incentives, restrictions, exclusions or prohibitions and their implications that apply to this site are indicated below.

Incentive, restriction or prohibition	Implication
Strategic Gas Pipeline Corridors-Phase 2: Mossel Bay to Coega	https://screening.environment.gov.za/ScreeningDownloads/DevelopmentZones/Combined_GAS.pdf
South African Protected Areas	https://screening.environment.gov.za/ScreeningDownloads/DevelopmentZones/SAPAD_OR_2025_Q1_Metadata.pdf
South African Conservation Areas	https://screening.environment.gov.za/ScreeningDownloads/DevelopmentZones/SACAD_OR_2025_Q1_Metadata.pdf

Proposed Development Area Environmental Sensitivity

The following summary of the development site environmental sensitivities is identified. Only the highest environmental sensitivity is indicated. The footprint environmental sensitivities for the proposed development footprint as identified, are indicative only and must be verified on site by a suitably qualified person before the specialist assessments identified below can be confirmed.

Theme	Very High sensitivity	High sensitivity	Medium sensitivity	Low sensitivity
Animal Species Theme		X		
Aquatic Biodiversity Theme	X			
Archaeological and Cultural Heritage Theme	X			
Civil Aviation Theme				X
Defence Theme				X
Paleontology Theme	X			
Plant Species Theme		X		
Terrestrial Biodiversity Theme	X			

Specialist assessments identified

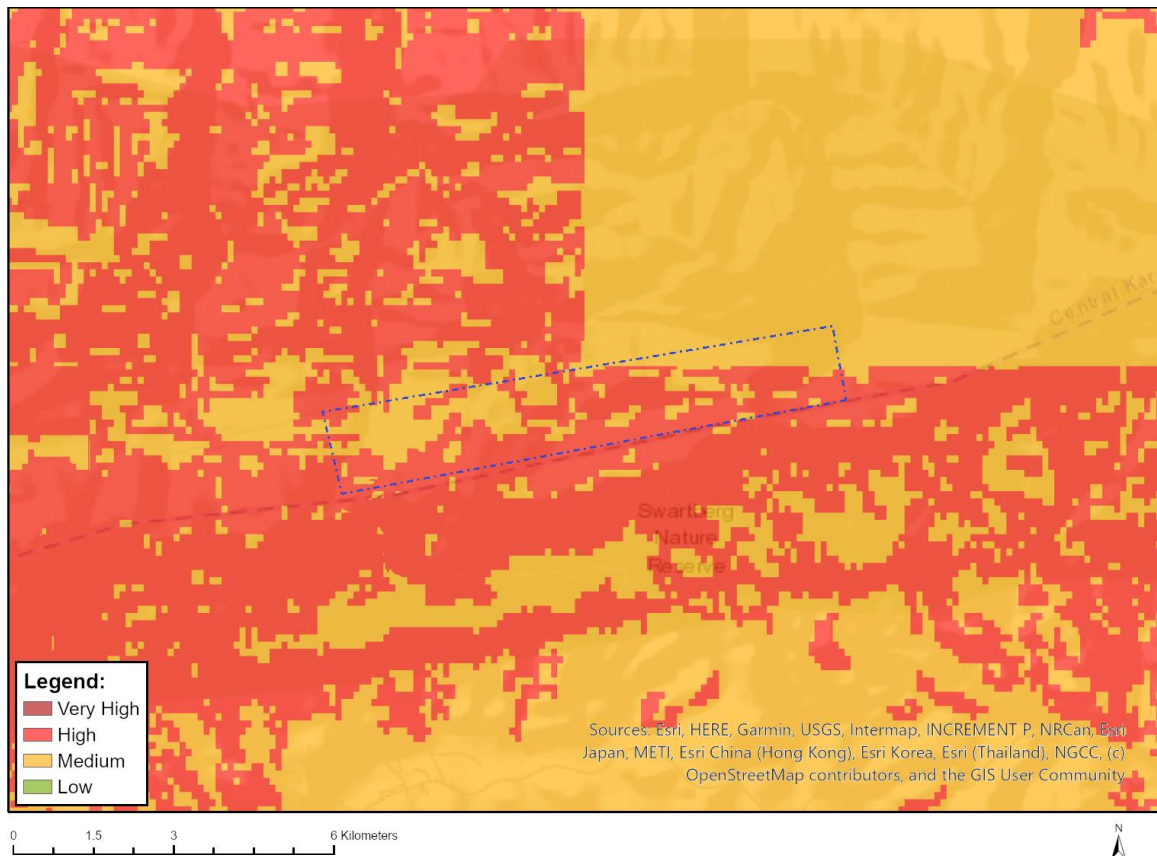
Based on the selected classification, and the known impacts associated with the proposed development, the following list of specialist assessments have been identified for inclusion in the assessment report. It is the responsibility of the EAP to confirm this list and to motivate in the assessment report, the reason for not including any of the identified specialist study including the provision of photographic evidence of the site situation.

No	Specialist assessment	Assessment Protocol
1	Landscape/Visual Impact Assessment	https://screening.environment.gov.za/ScreeningDownloads/AssessmentProtocols/Gazetted_General_Requirement_Assessment_Protocols.pdf
2	Archaeological and Cultural Heritage Impact Assessment	https://screening.environment.gov.za/ScreeningDownloads/AssessmentProtocols/GuidanceforHIA.pdf
3	Palaeontology Impact Assessment	https://screening.environment.gov.za/ScreeningDownloads/AssessmentProtocols/GuidanceforPIA.pdf
4	Terrestrial Biodiversity Impact Assessment	https://screening.environment.gov.za/ScreeningDownloads/AssessmentProtocols/Gazetted_Terrestrial_Biodiversity_Assessment_Protocols.pdf
5	Aquatic Biodiversity Impact Assessment	https://screening.environment.gov.za/ScreeningDownloads/AssessmentProtocols/Gazetted_Aquatic_Biodiversity_Assessment_Protocols.pdf
6	Socio-Economic Assessment	https://screening.environment.gov.za/ScreeningDownloads/AssessmentProtocols/Gazetted_General_Requirement_Assessment_Protocols.pdf
7	Plant Species Assessment	https://screening.environment.gov.za/ScreeningDownloads/AssessmentProtocols/Gazetted_Plant_Species_Assessment_Protocols.pdf
8	Animal Species Assessment	https://screening.environment.gov.za/ScreeningDownloads/AssessmentProtocols/Gazetted_Animal_Species_Assessment_Protocols.pdf

Results of the environmental sensitivity of the proposed area.

The following section represents the results of the screening for environmental sensitivity of the proposed site for relevant environmental themes associated with the project classification. It is the duty of the EAP to ensure that the environmental themes provided by the screening tool are comprehensive and complete for the project. Refer to the disclaimer.

MAP OF RELATIVE ANIMAL SPECIES THEME SENSITIVITY



Where only a sensitive plant unique number or sensitive animal unique number is provided in the screening report and an assessment is required, the environmental assessment practitioner (EAP) or specialist is required to email SANBI at eiadatarequests@sanbi.org.za listing all sensitive species with their unique identifiers for which information is required. The name has been withheld as the species may be prone to illegal harvesting and must be protected. SANBI will release the actual species name after the details of the EAP or specialist have been documented.

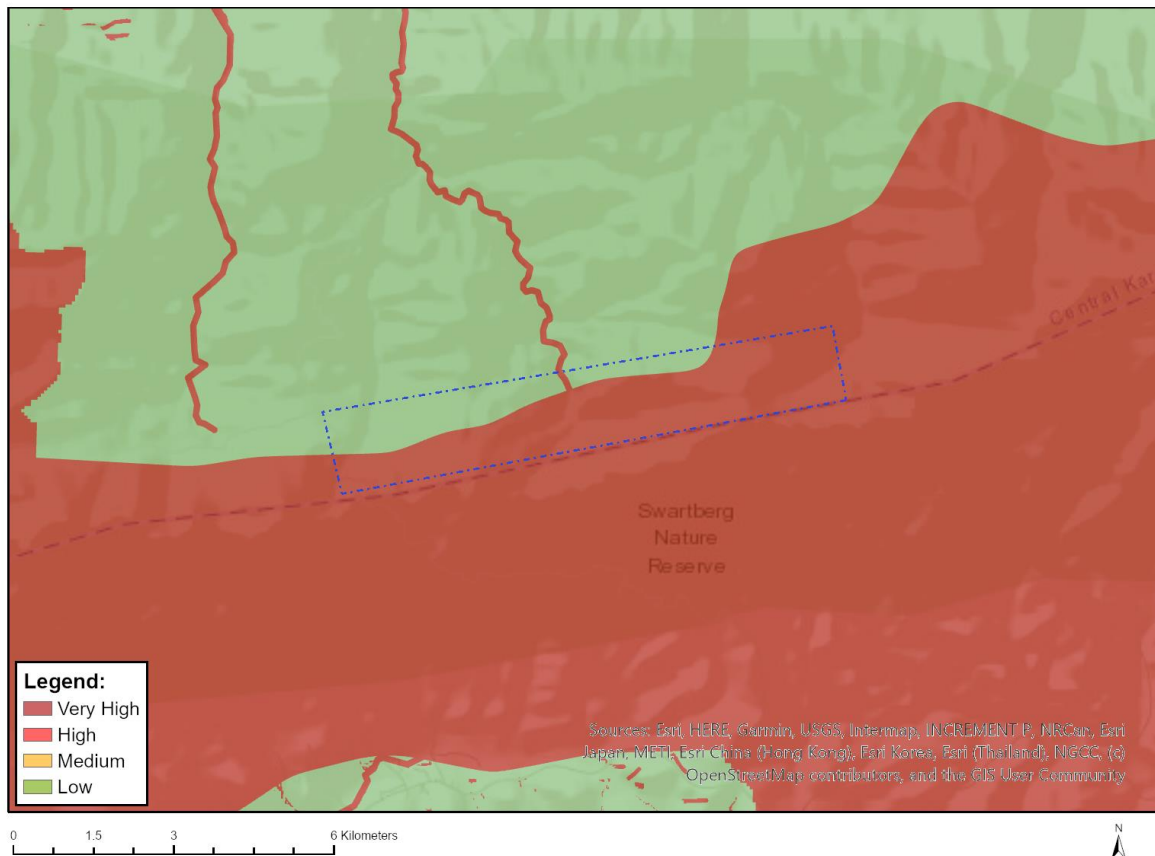
Very High sensitivity	High sensitivity	Medium sensitivity	Low sensitivity
	X		

Sensitivity Features:

Sensitivity	Feature(s)
High	Aves-Aquila verreauxii
High	Aves-Polemaetus bellicosus
High	Insecta-Chrysoritis pyramus pyramus
Medium	Aves-Sarothrura affinis

Medium	Aves-Aquila verreauxii
Medium	Insecta-Aloeides caledoni
Medium	Sensitive species 8
Medium	Reptilia-Chersobius boulengeri
Medium	Invertebrate-Aneuryphymus montanus
Very high	Insecta-Chrysothrips swanepoeli hyperion

MAP OF RELATIVE AQUATIC BIODIVERSITY THEME SENSITIVITY

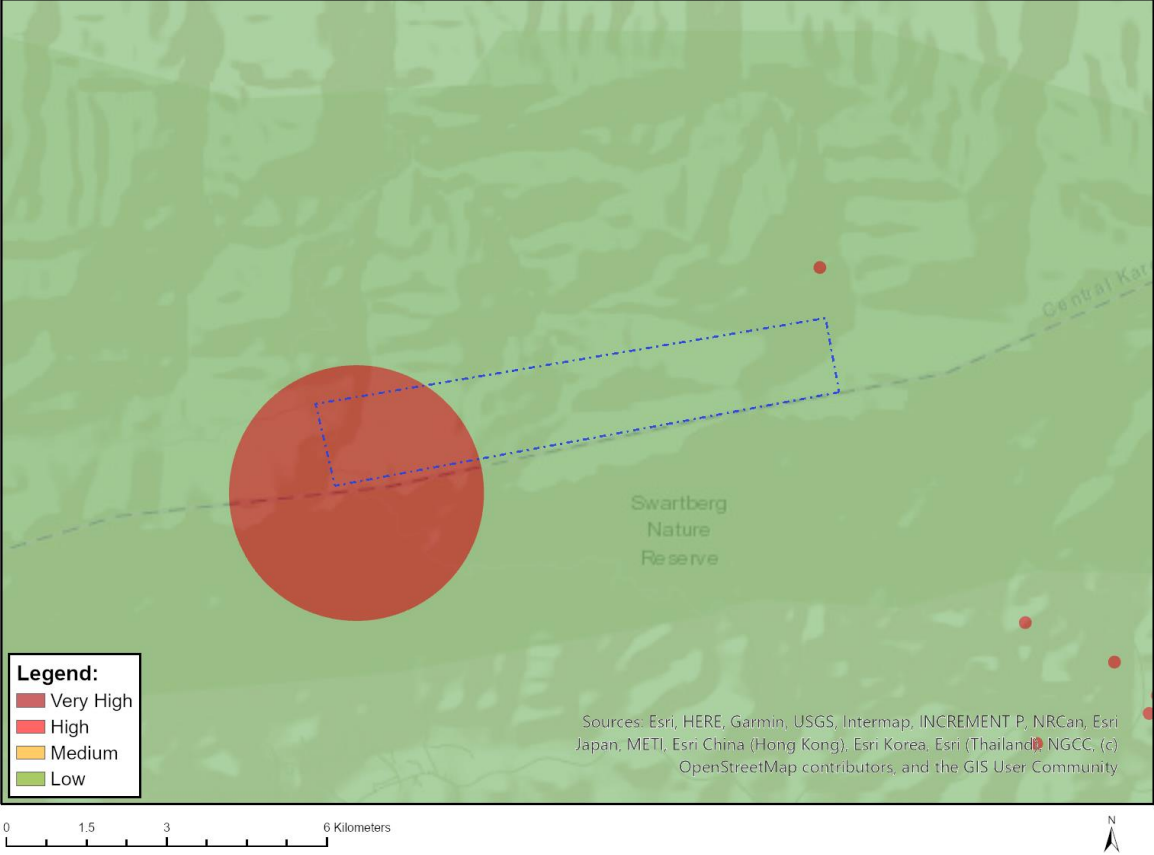


Very High sensitivity	High sensitivity	Medium sensitivity	Low sensitivity
X			

Sensitivity Features:

Sensitivity	Feature(s)
Low	Low Sensitivity
Very High	FEPA Subcatchment
Very High	Rivers
Very High	SWSA (sw)_Swartberg

MAP OF RELATIVE ARCHAEOLOGICAL AND CULTURAL HERITAGE THEME SENSITIVITY



Very High sensitivity	High sensitivity	Medium sensitivity	Low sensitivity
X			

Sensitivity Features:

Sensitivity	Feature(s)
Low	Low Sensitivity
Very High	Within 2km of a Grade II Heritage site

MAP OF RELATIVE CIVIL AVIATION THEME SENSITIVITY

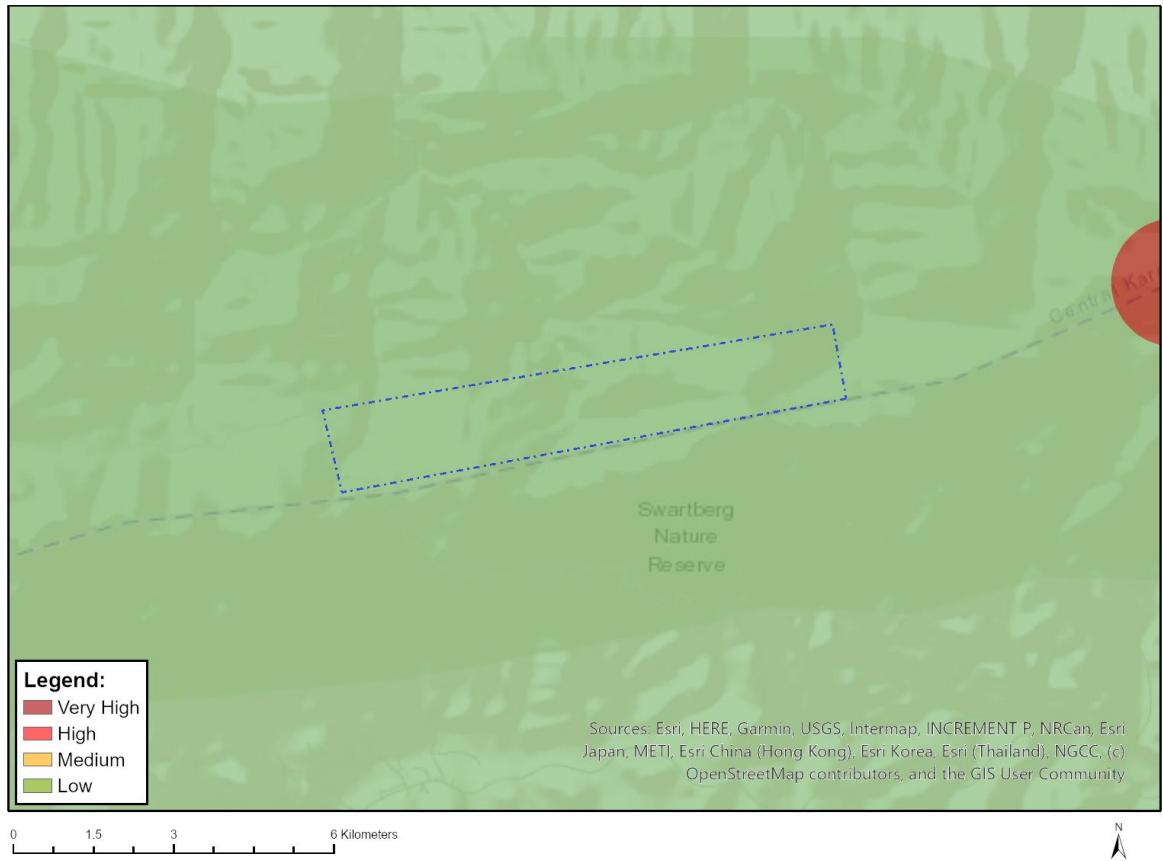


Very High sensitivity	High sensitivity	Medium sensitivity	Low sensitivity
			X

Sensitivity Features:

Sensitivity	Feature(s)
Low	Low sensitivity

MAP OF RELATIVE DEFENCE THEME SENSITIVITY

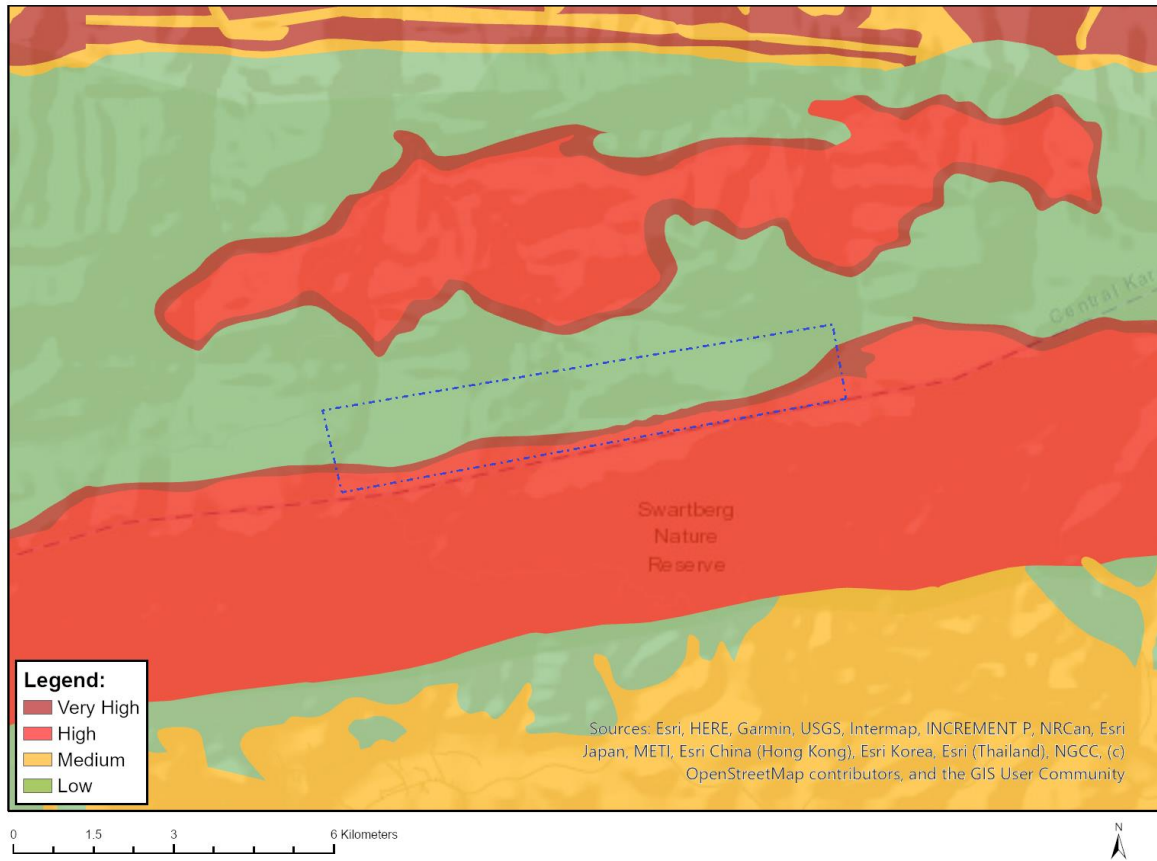


Very High sensitivity	High sensitivity	Medium sensitivity	Low sensitivity
			X

Sensitivity Features:

Sensitivity	Feature(s)
Low	Low Sensitivity

MAP OF RELATIVE PALEONTOLOGY THEME SENSITIVITY

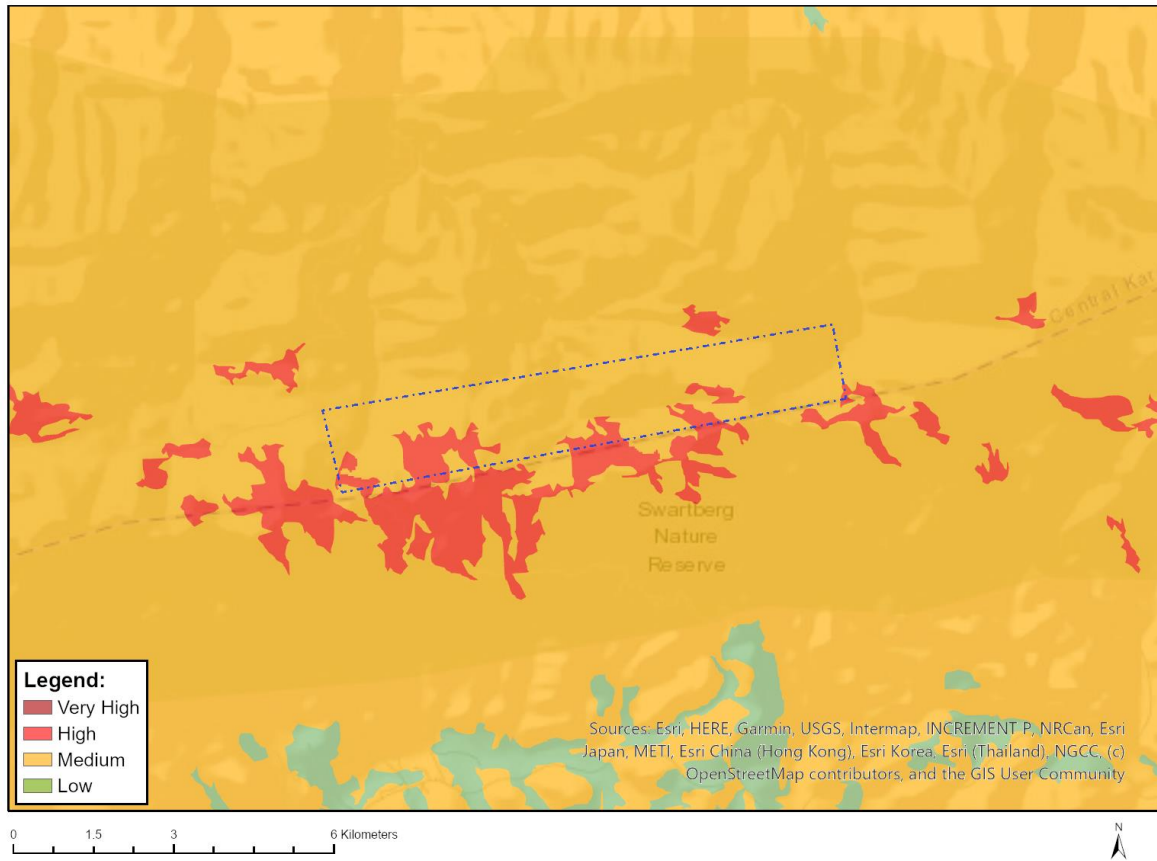


Very High sensitivity	High sensitivity	Medium sensitivity	Low sensitivity
X			

Sensitivity Features:

Sensitivity	Feature(s)
High	Features with a High paleontological sensitivity
Low	Features with a Low paleontological sensitivity
Very High	Features with a Very High paleontological sensitivity

MAP OF RELATIVE PLANT SPECIES THEME SENSITIVITY



Where only a sensitive plant unique number or sensitive animal unique number is provided in the screening report and an assessment is required, the environmental assessment practitioner (EAP) or specialist is required to email SANBI at eiadatarequests@sanbi.org.za listing all sensitive species with their unique identifiers for which information is required. The name has been withheld as the species may be prone to illegal harvesting and must be protected. SANBI will release the actual species name after the details of the EAP or specialist have been documented.

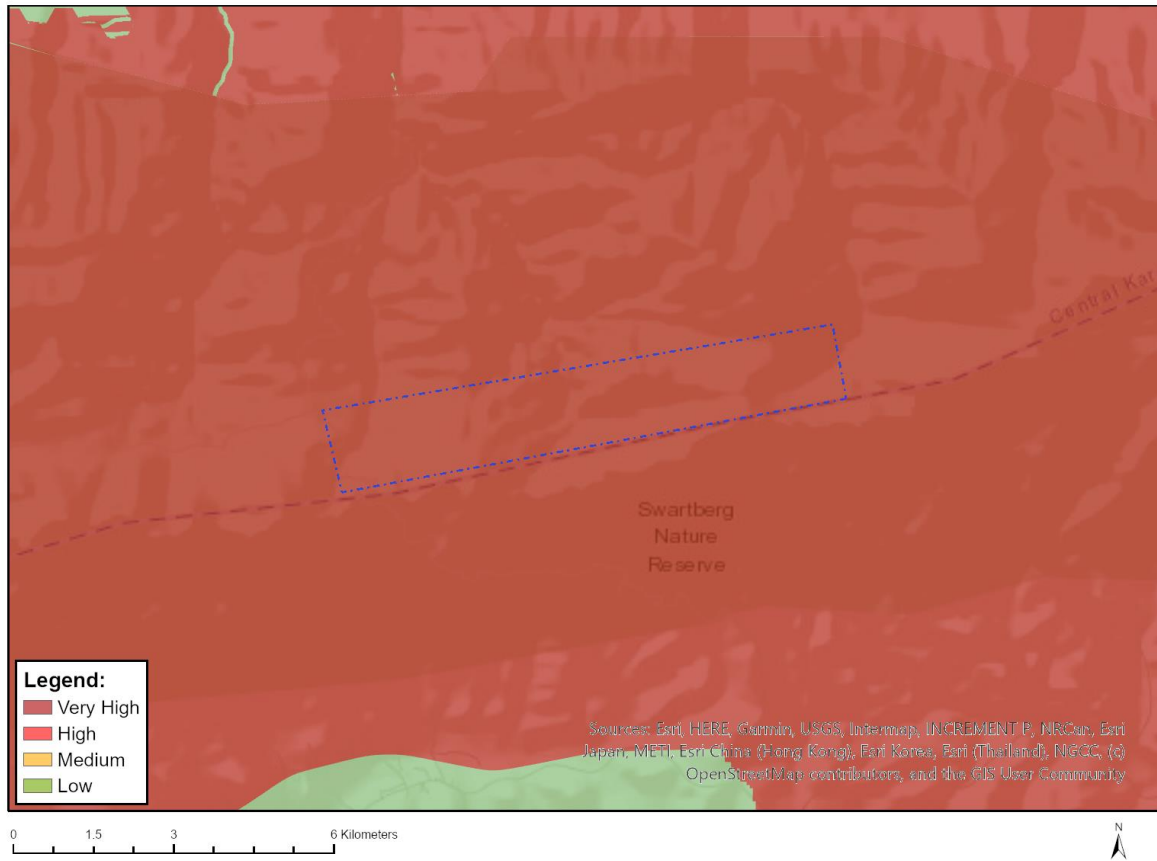
Very High sensitivity	High sensitivity	Medium sensitivity	Low sensitivity
	X		

Sensitivity Features:

Sensitivity	Feature(s)
High	Liparia confusa
High	Liparia racemosa
High	Rafnia rostrata subsp. pluriflora
High	Sensitive species 615
High	Leucadendron dregei
High	Protea montana
High	Protea venusta
High	Erica lignosa
High	Syncarpha montana
High	Berkheya francisci
High	Helichrysum saxicola
High	Cliffortia aculeata
Medium	Liparia confusa

Medium	<i>Liparia racemosa</i>
Medium	<i>Aspalathus congesta</i>
Medium	<i>Aspalathus patens</i>
Medium	<i>Aspalathus ramosissima</i>
Medium	<i>Otholobium macradenium</i>
Medium	<i>Otholobium rubicundum</i>
Medium	<i>Rafnia rostrata</i> subsp. <i>pluriflora</i>
Medium	Sensitive species 1136
Medium	Sensitive species 615
Medium	<i>Leucadendron dregei</i>
Medium	<i>Protea montana</i>
Medium	<i>Protea venusta</i>
Medium	<i>Selago nigromontana</i>
Medium	<i>Selago exigua</i>
Medium	<i>Pentameris glacialis</i>
Medium	<i>Geissorhiza nigromontana</i>
Medium	<i>Geissorhiza uliginosa</i>
Medium	Sensitive species 1275
Medium	Sensitive species 689
Medium	Sensitive species 473
Medium	<i>Erica costatisepala</i>
Medium	<i>Erica insignis</i>
Medium	<i>Erica lignosa</i>
Medium	<i>Erica zwartbergensis</i>
Medium	<i>Erica atromontana</i>
Medium	<i>Erica chionodes</i>
Medium	Sensitive species 617
Medium	Sensitive species 1164
Medium	<i>Ficinia petrophila</i>
Medium	<i>Thamnochortus papyraceus</i>
Medium	<i>Staberoha stokoei</i>
Medium	<i>Restio papyraceus</i>
Medium	<i>Restio uniflorus</i>
Medium	Sensitive species 514
Medium	<i>Heliophila rimicola</i>
Medium	<i>Syncarpha montana</i>
Medium	<i>Felicia oleosa</i>
Medium	<i>Berkheya francisci</i>
Medium	<i>Helichrysum saxicola</i>
Medium	<i>Agathosma zwartbergense</i>
Medium	<i>Cliffortia aculeata</i>
Medium	<i>Cliffortia verrucosa</i>
Medium	Sensitive species 364
Medium	Sensitive species 538
Medium	<i>Phyllica nigromontana</i>
Medium	<i>Leucadendron cordatum</i>
Medium	<i>Protea rupicola</i>
Medium	<i>Erica glandulipila</i>
Medium	<i>Erica inamoena</i>
Medium	<i>Cliffortia montana</i>

MAP OF RELATIVE TERRESTRIAL BIODIVERSITY THEME SENSITIVITY



Very High sensitivity	High sensitivity	Medium sensitivity	Low sensitivity
X			

Sensitivity Features:

Sensitivity	Feature(s)
Very High	FEPA Subcatchment
Very High	SWSA (sw)_Swartberg
Very High	Cape Floral Region Protected Areas