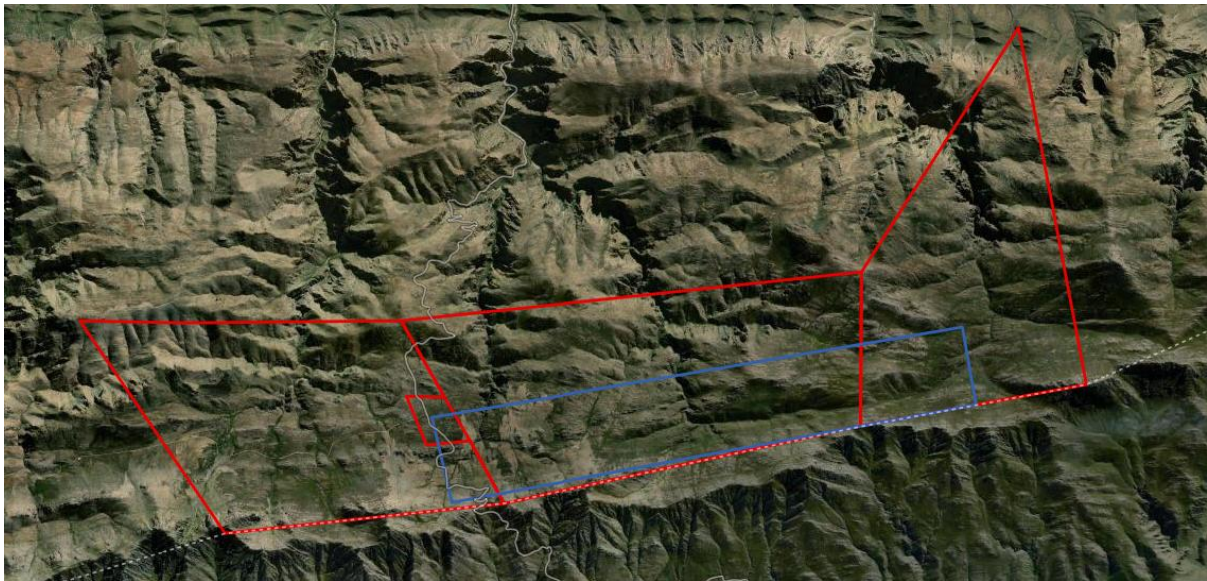


Starting Point #1 (Swartberg Pass intersection)	33°20'56.37" South	22°02'35.80" East
Middle Point #2	33°20'39.25" South	22°03'18.30" East
Middle Point #3	33°20'15.80" South	22°06'07.60" East
End Point #4 (Bothashoek)	33°20'05.08" South	22°07'30.59" East

Swartberg Nature Reserve Coordinates for road repair and maintenance study area.

Property Descriptions of the cadastral units on which the management road is located.



- Remainder Farm 192 De Wets Vley
- Farm 191 Dorpsrivier
- Farm 188 Gouwsberg