

# CBA & ESA Map



## Legend

### BSP ESA: Restore

ESA2: Restore from other land use

### BSP CBA: Degraded

CBA2: Terrestrial

### BSP CBA

CBA: Terrestrial

CBA: Forest

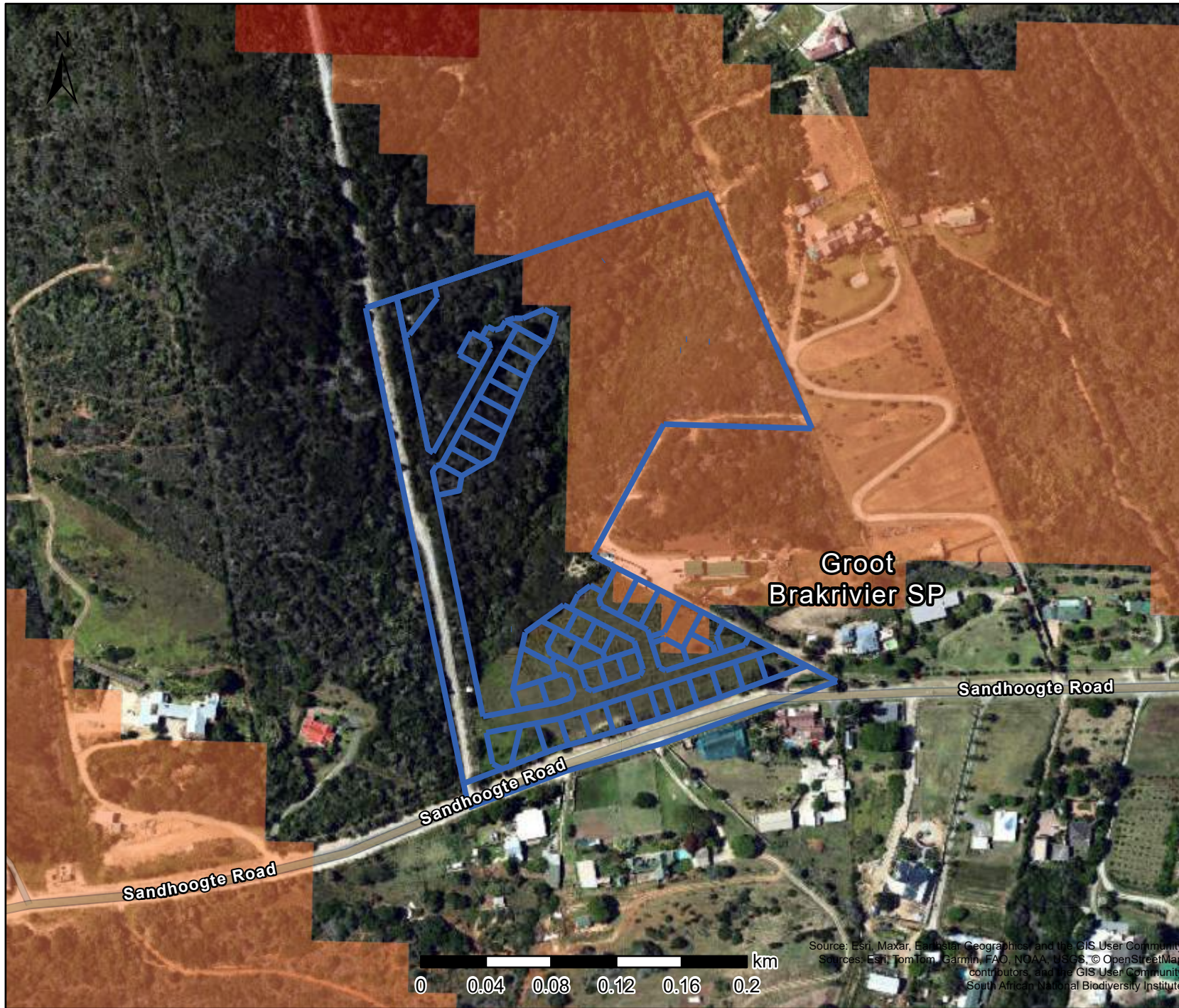
CBA: Wetland

Map Center: Lon: 22°12'11.5"E  
Lat: 34°3'19.2"S

Scale: 1:3,975



Date created: 2024/07/03

# SANBI Red List: Remnants Map



## Legend

### Red List of Ecosystems Remnants Category

-  Critically Endangered
-  Endangered

**Map Center:** Lon: 22°12'11.5"E  
Lat: 34°3'19.2"S

**Scale:** 1:3,975

**Date created:** 2024/07/03

Source: Esri, Maxar, Earthstar Geographics and the GIS User Community  
Sources: Esri, TomTom, Garmin, FAO, NOAA, USGS, © OpenStreetMap contributors, and the GIS User Community  
South African National Biodiversity Institute



# 5m Contour Map



## Legend

— 5m Contours

**Map Center:** Lon: 22°12'11.5"E  
Lat: 34°3'19.2"S

**Scale:** 1:3,975

**Date created:** 2024/07/03

Source: Esri, Maxar, Earthstar Geographics and the GIS User Community  
Sources: Esri, TomTom, Garmin, FAO, NOAA, USGS, © OpenStreetMap contributors, and the GIS User Community



# Wetland & River Map



Chief Directorate: National Geo-Spatial Information (DALRRD)  
Source: Esri, Maxar, Earthstar Geographics and the GIS User Community  
Sources: Esri, TomTom, Garmin, FAO, NOAA, USGS, © OpenStreetMap

## Legend

### Rivers

--- Non-Perennial

### Wetlands (NFEPA)

■ Natural

### Wetlands (NWM5)

Classification

■ Seep wetland

0 0.03 0.06 0.09 0.12 0.15 km

Map Center: Lon: 22°12'11.9"E  
Lat: 34°3'19.2"S




Scale: 1:3,975

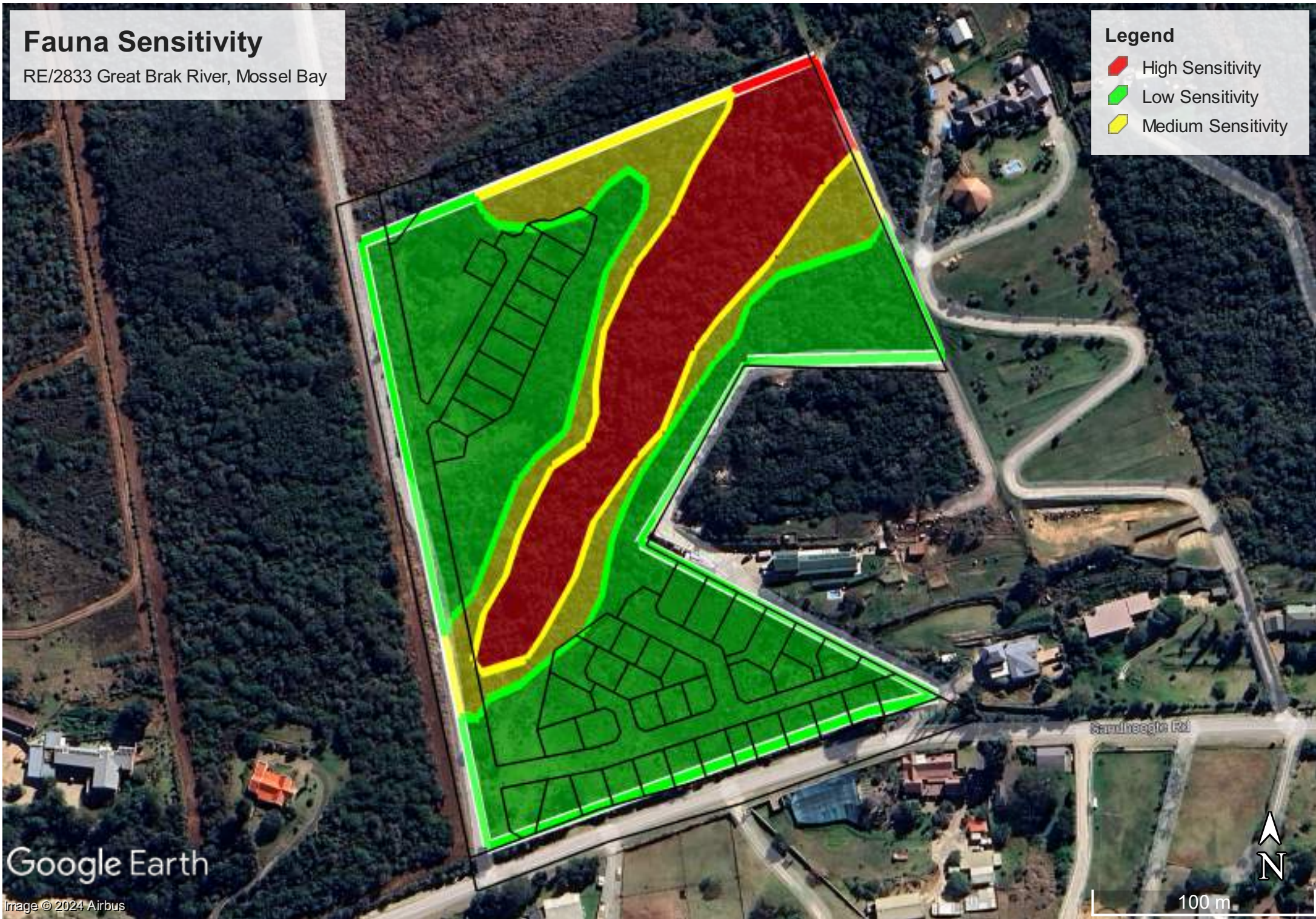
Date created: March 7, 2024

# Fauna Sensitivity

RE/2833 Great Brak River, Mossel Bay

## Legend

-  High Sensitivity
-  Low Sensitivity
-  Medium Sensitivity



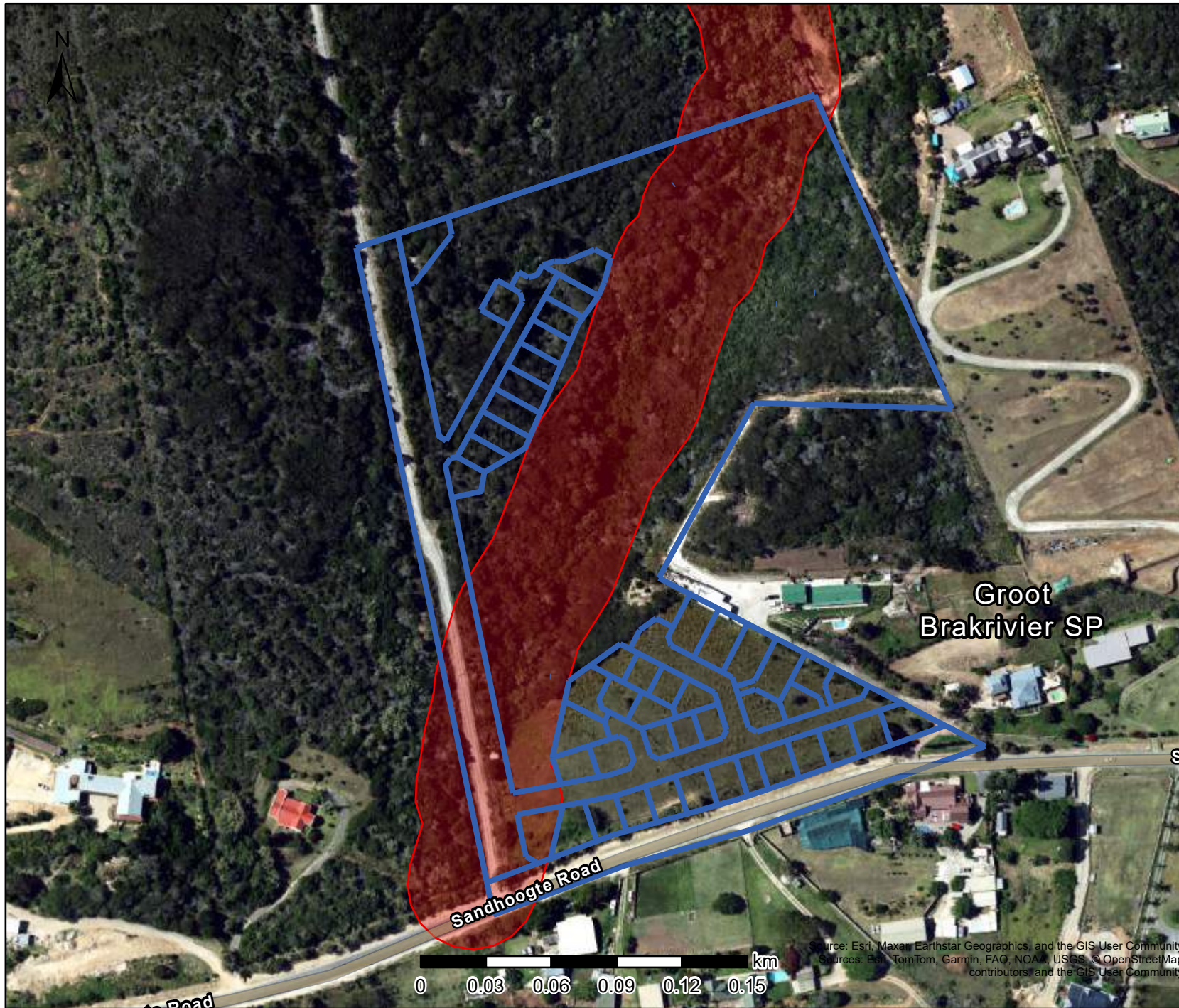
Google Earth

Image © 2024 Airbus

100 m

# 30m Buffer

Legend



Map Center: Lon: 22°12'10.3"E  
Lat: 34°3'19.2"S

Scale: 1:2,978

Date created: 2024/28/02



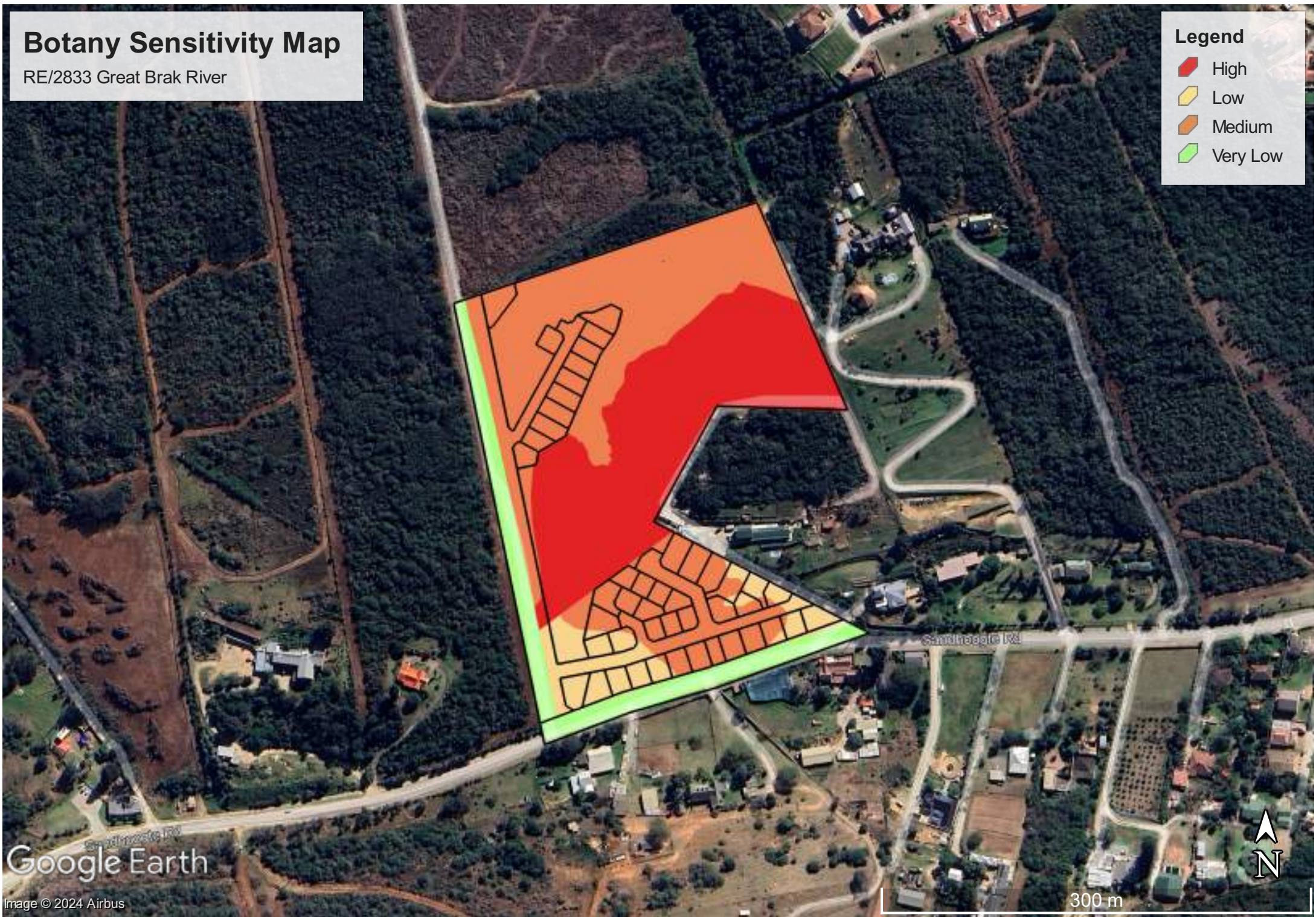
Source: Esri, Maxar, Earthstar Geographics, and the GIS User Community  
Sources: Esri, TomTom, Garmin, FAO, NOAA, USGS, © OpenStreetMap contributors, and the GIS User Community

# Botany Sensitivity Map

RE/2833 Great Brak River

## Legend

- High
- Low
- Medium
- Very Low



Google Earth

Image © 2024 Airbus

300 m

# Vegetation Map

RE/2833 Great Brak River

## Legend

- Black Wattle dominated Thicket
- Black Wattle Stand
- Grass Dominated Field
- Roadside Bushes
- Secondary Fynbos
- Senescent Erica Peltata dominated fynbos
- Valley Thicket

Google Earth

Image © 2024 Airbus



200 m