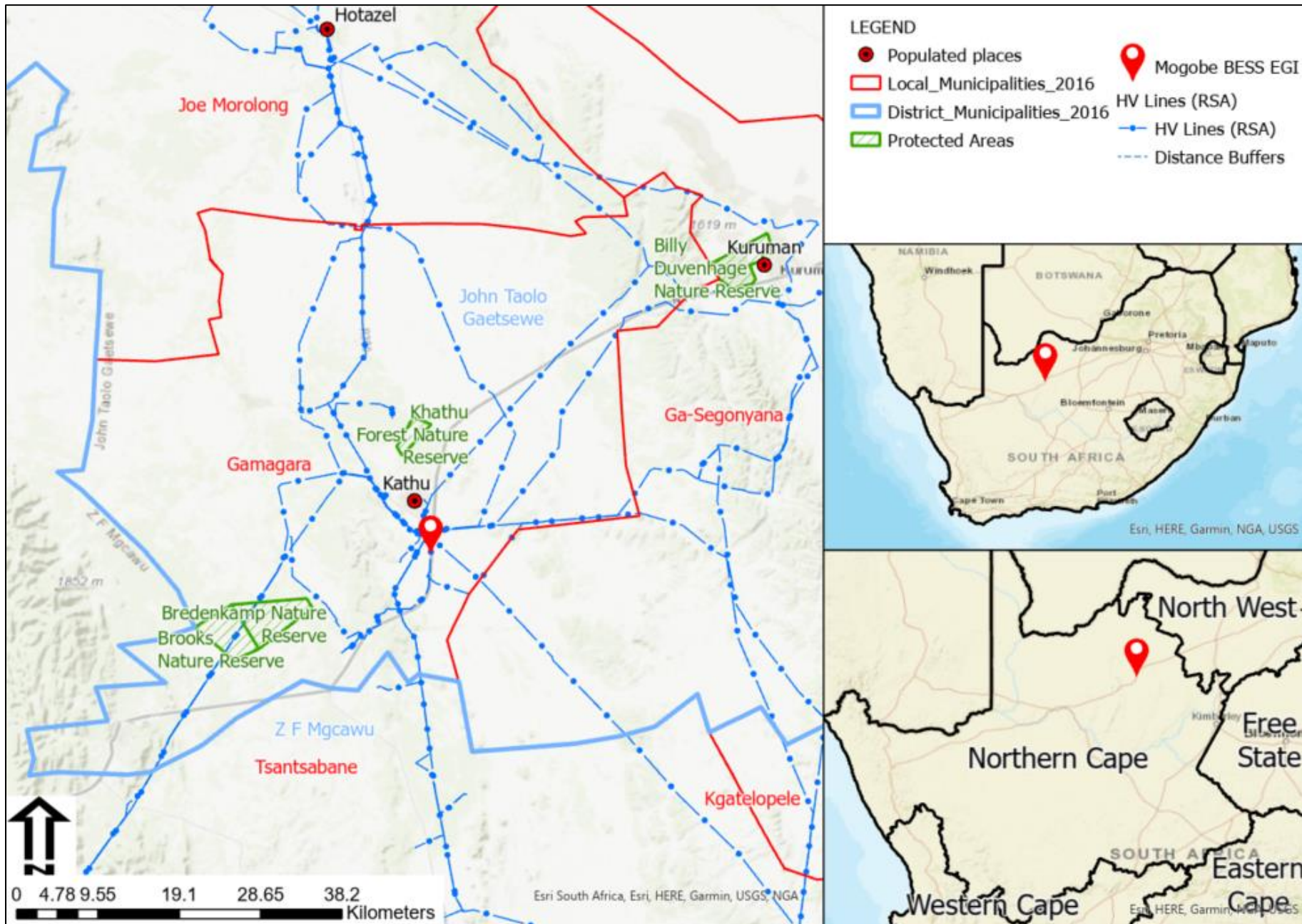
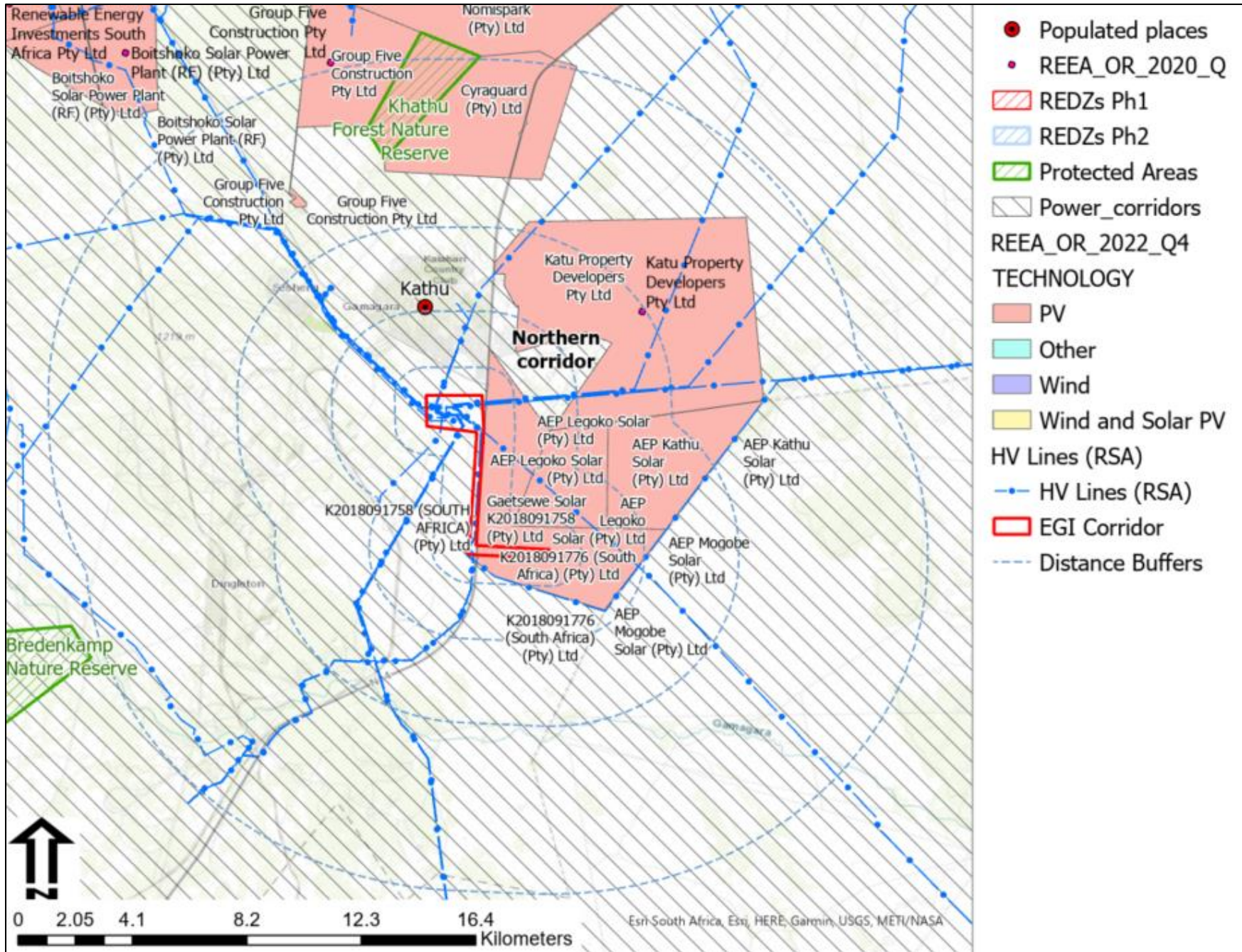


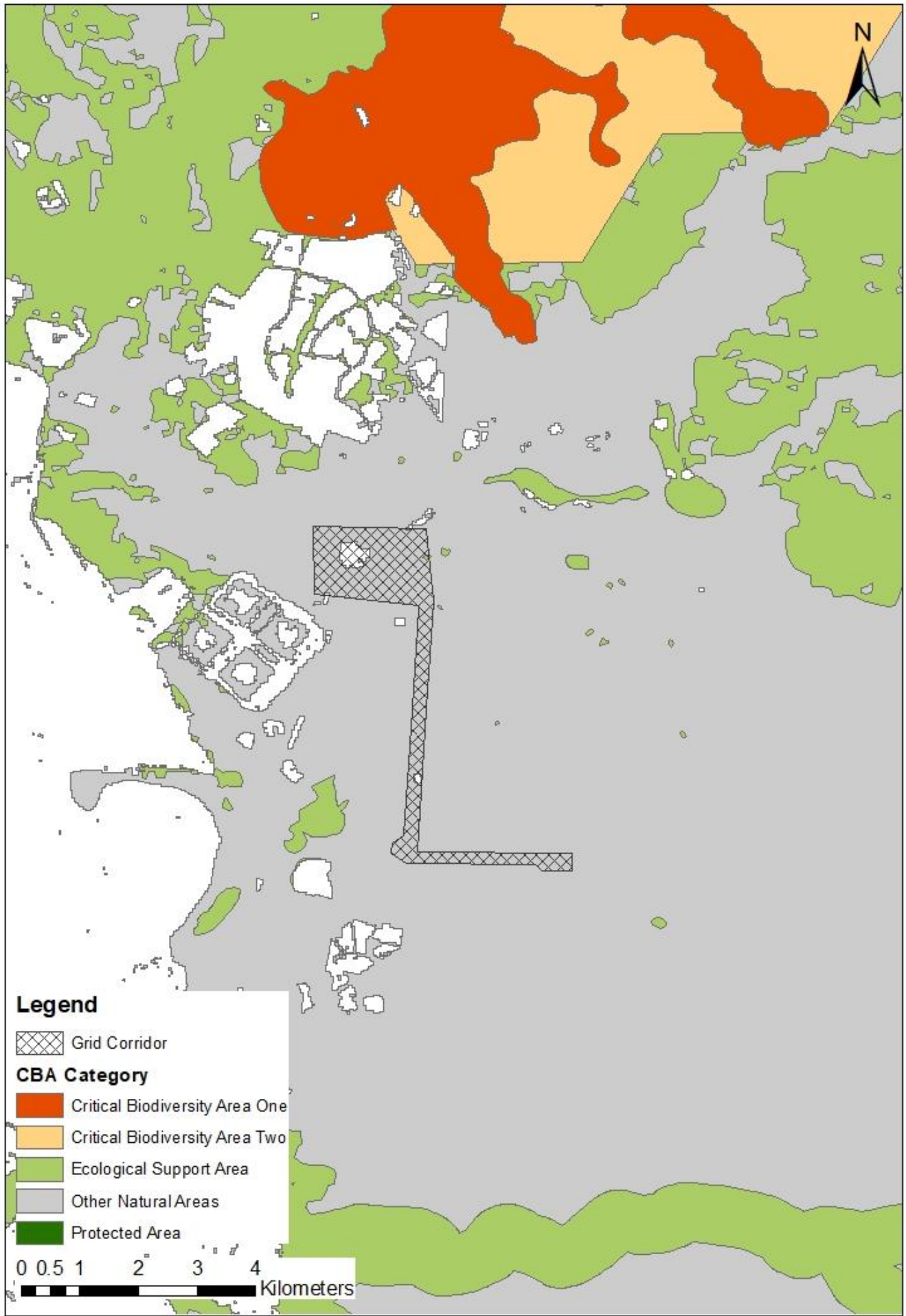
Extract from 1:50 000 topographic maps 2722DB, 2723CA, 2722DD & 2723CC showing the location of the site. Source of basemap: Chief Directorate: National Geo-Spatial Information. Website: www.ngi.gov.za.



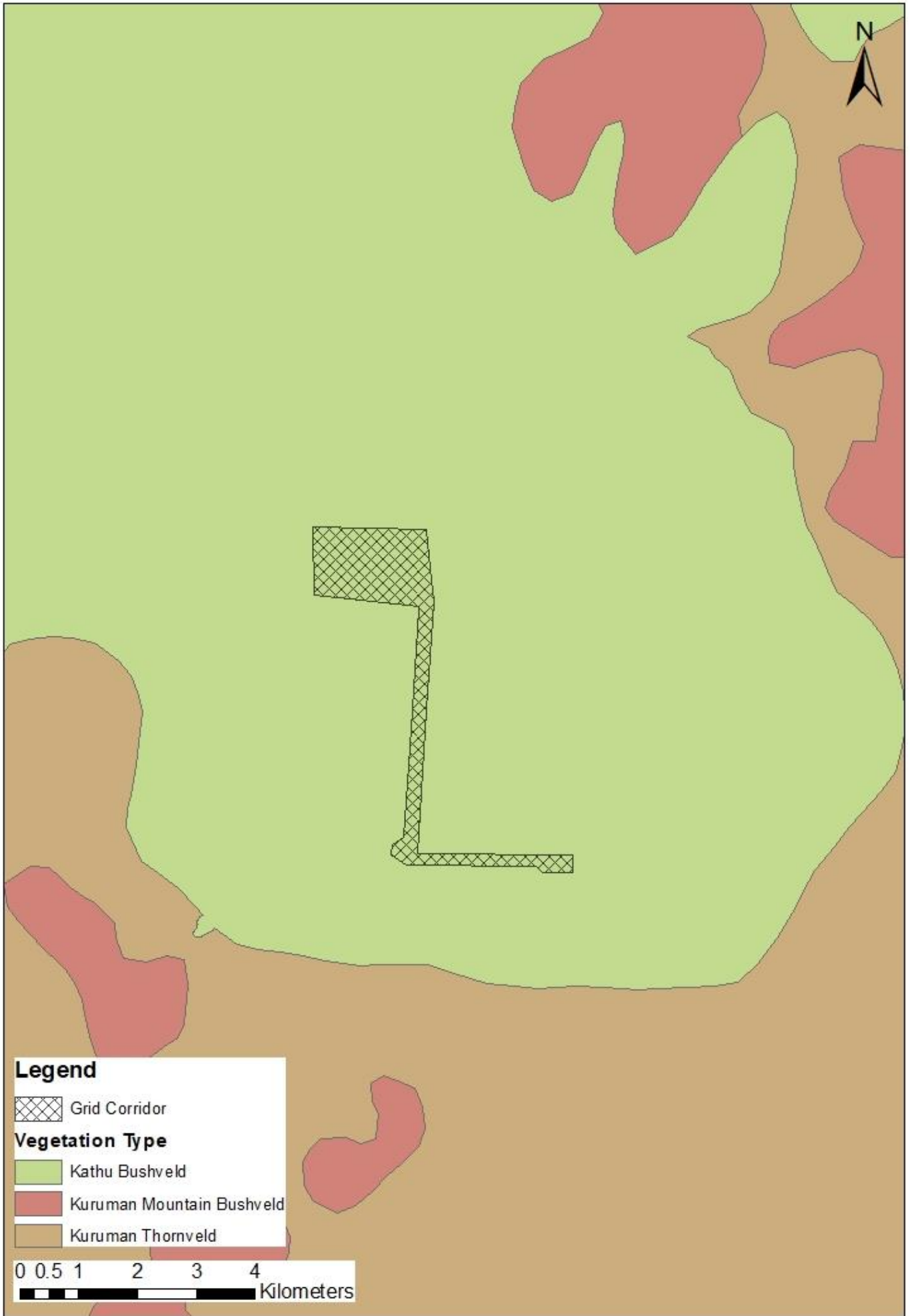
National and regional locality map.



Spatial Planning Context Map.



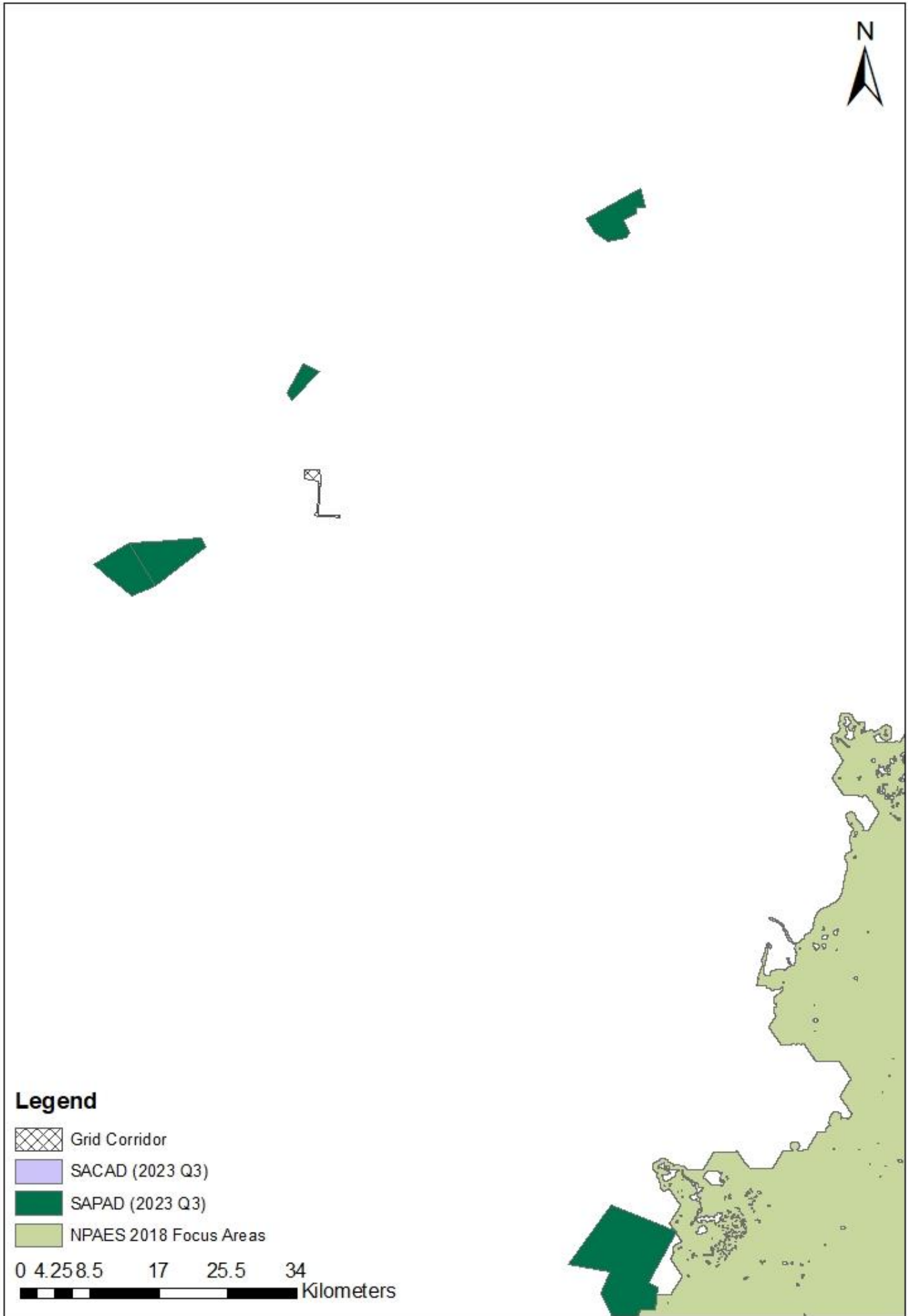
Critical Biodiversity Areas Map.



National Vegetation Map.



Vegetation Map as delineated by the Terrestrial Biodiversity Specialist.



The project in relation to protected areas and NPAES.



Site Ecological Importance

