

Sunveld Solar PV - Critical Biodiversity Areas



Legend

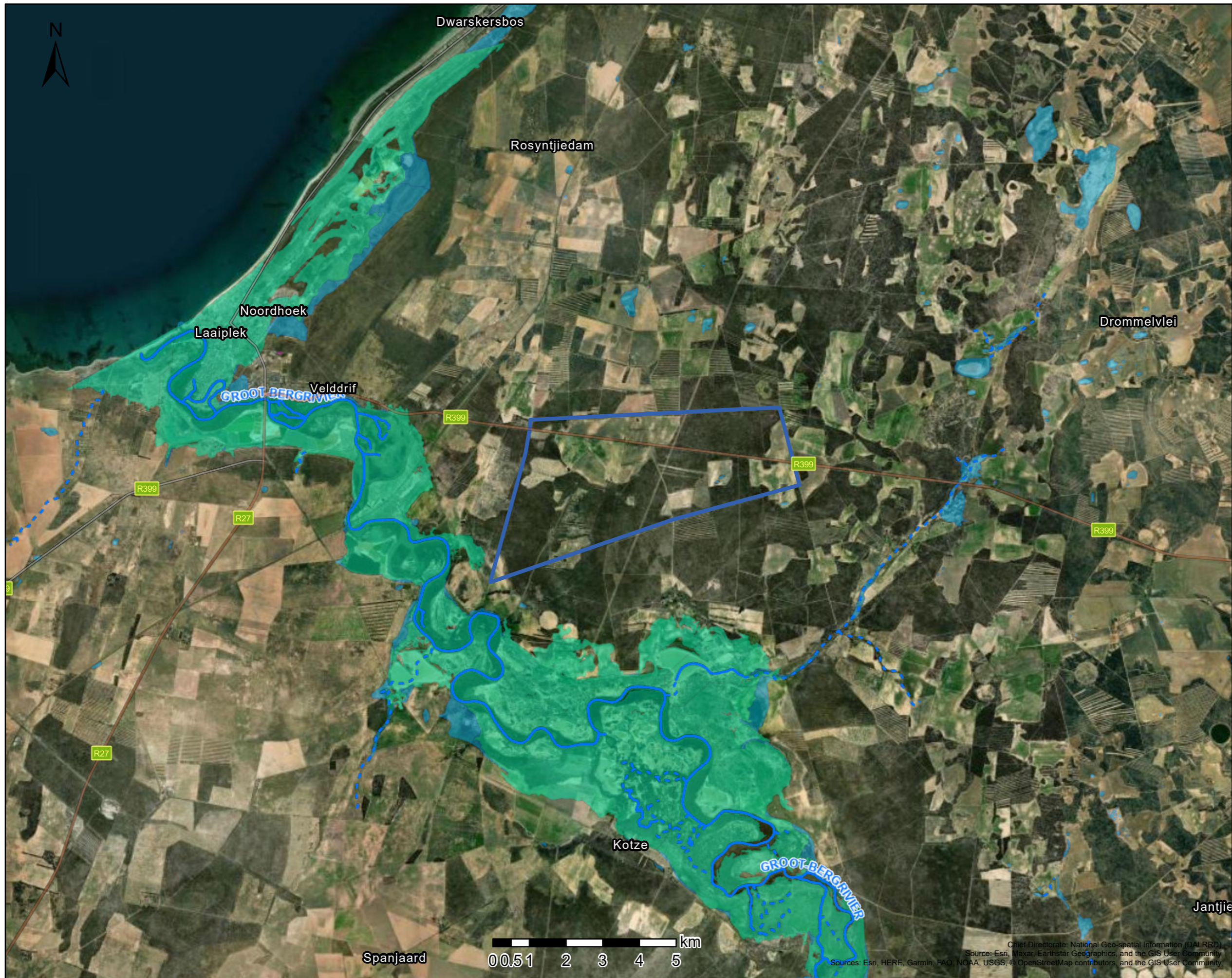
- BSP ESA
 - ESA: Aquatic
 - ESA: Terrestrial
- BSP CBA
 - CBA: Terrestrial
 - CBA: River
 - CBA: Estuary
 - CBA: Wetland

Map Center: Lon: 18°17'2.7"E
Lat: 32°48'50.2"S

Scale: 1:36,817

Date created: 2023/09/14

Sunveld Solar PV - National Freshwater Ecosystem Priority Areas



Legend

- Rivers**
- Perennial
 - - Non-Perennial
- Wetlands (NFEPA)**
- Artificial
 - Estuaries
 - Natural

Map Center: Lon: 18°16'19.6"E
 Lat: 32°48'37.2"S

Scale: 1:119,417

Date created: 2023/09/14



Chief Directorate: National Geo-spatial Information (DALRRD)
 Source: Esri, Maxar, Earthstar Geographics, and the GIS User Community
 Sources: Esri, HERE, Garmin, FAO, NOAA, USGS, © OpenStreetMap contributors, and the GIS User Community

Sunveld Solar PV - SANBI Redlist Remnant Vegetation



Legend

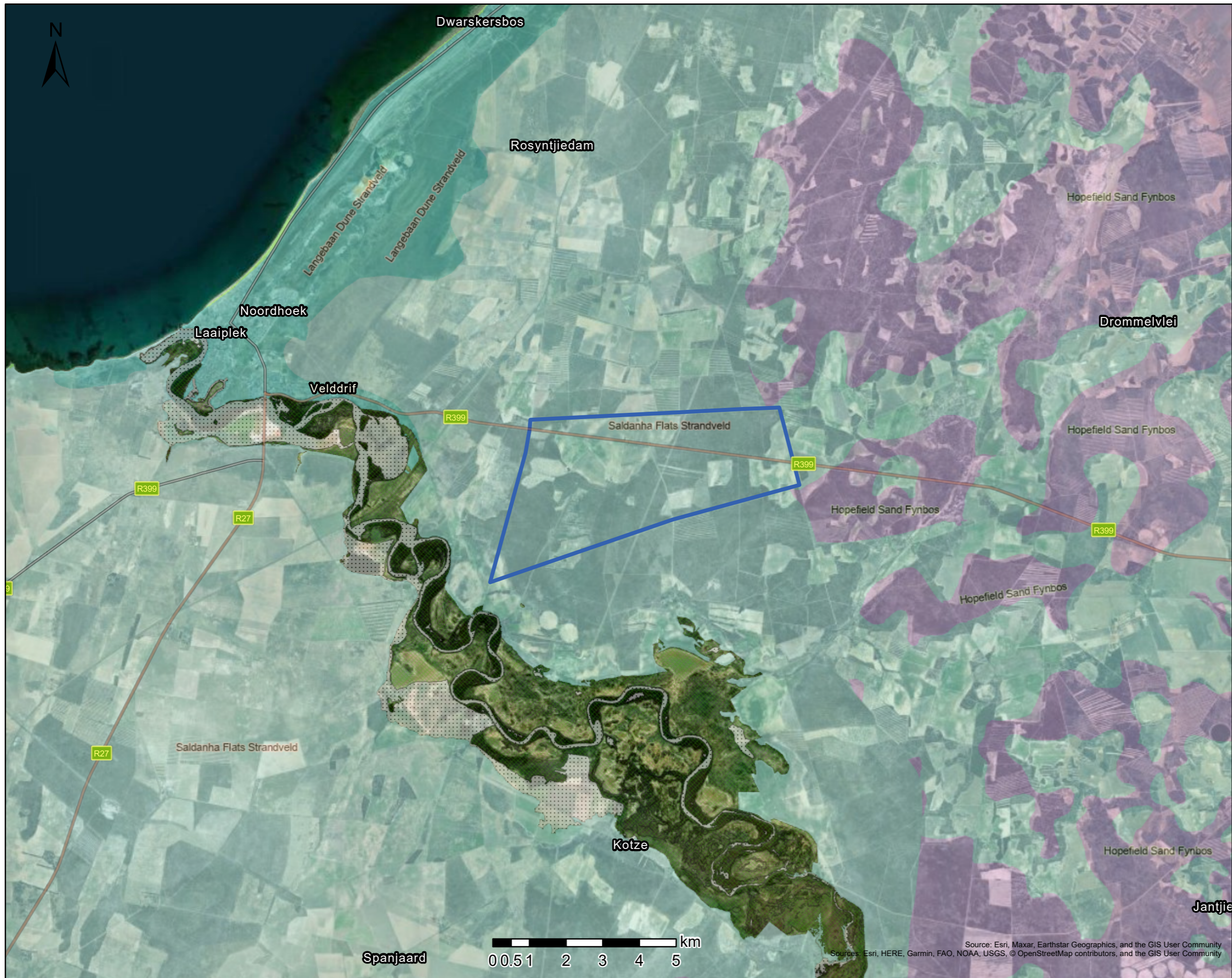
- Red List of Ecosystems Remnants
- Endangered
 - Least Concern

Map Center: Lon: 18°16'19.6"E
Lat: 32°48'37.2"S
Scale: 1:119,417
Date created: 2023/09/14



Source: Esri, Maxar, Earthstar Geographics, and the GIS User Community
Sources: Esri, HERE, Garmin, FAO, NOAA, USGS, © OpenStreetMap contributors, and the GIS User Community
South African National Biodiversity Institute

Sunveld Solar PV - Vegetation Map 2018



Legend

VEGMAP 2018

-  Estuary
-  Estuarine vegetation
-  AZd 3 Cape Seashore Vegetation
-  FFd 3 Hopefield Sand Fynbos
-  FS 3 Saldanha Flats Strandveld
-  FS 5 Langebaan Dune Strandveld

Map Center: Lon: 18°16'19.6"E
Lat: 32°48'37.2"S

Scale: 1:119,417

Date created: 2023/09/14



Western Cape Government
FOR YOU

Source: Esri, Maxar, Earthstar Geographics, and the GIS User Community
Sources: Esri, HERE, Garmin, FAO, NOAA, USGS, © OpenStreetMap contributors, and the GIS User Community