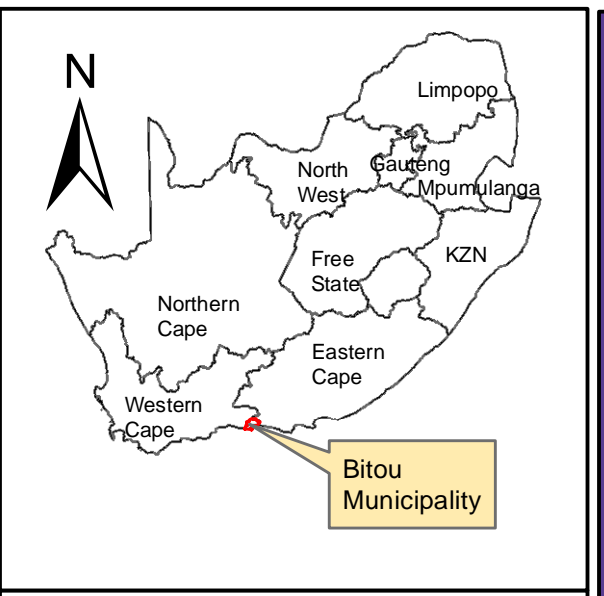


### Vegetation Type & Ecosystem Status

- Garden Route Shale Fynbos, VU (2011), VU (2018)
- Non-terrestrial (Estuarine Functional Zone)
- South Outeniqua Sandstone Fynbos, LC (2011), LC (2018)



**Erf 2103 Piesang Valley  
Plettenberg Bay**

### Legend

- Erf\_2103
- Amended\_footprint
- 20m Buffer

### Notes

- Map Scale is 1: 4 000 when printed on A3
- Aerial image courtesy of Google Earth Pro 2021
- Imagery date February 2021
- Biodiversity data courtesy of SANBI BGIS 2020 & WCBSP 2017
- 2018 Threat Status Assessment (Skowno, A et al August 2019)
- LC (Least Concern), VU (Vulnerable), EN (Endangered), CR (Critically Endangered)

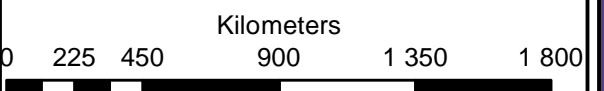
Map Drawn By:	Date	Reference
Melissa Mackay	2021/05/26	BIT517

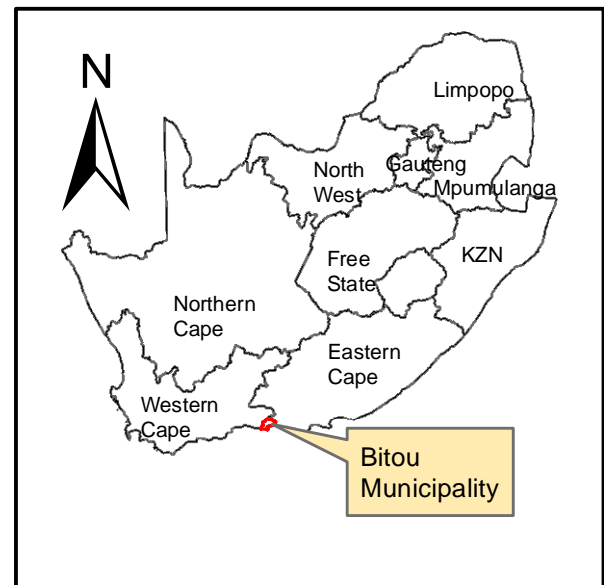
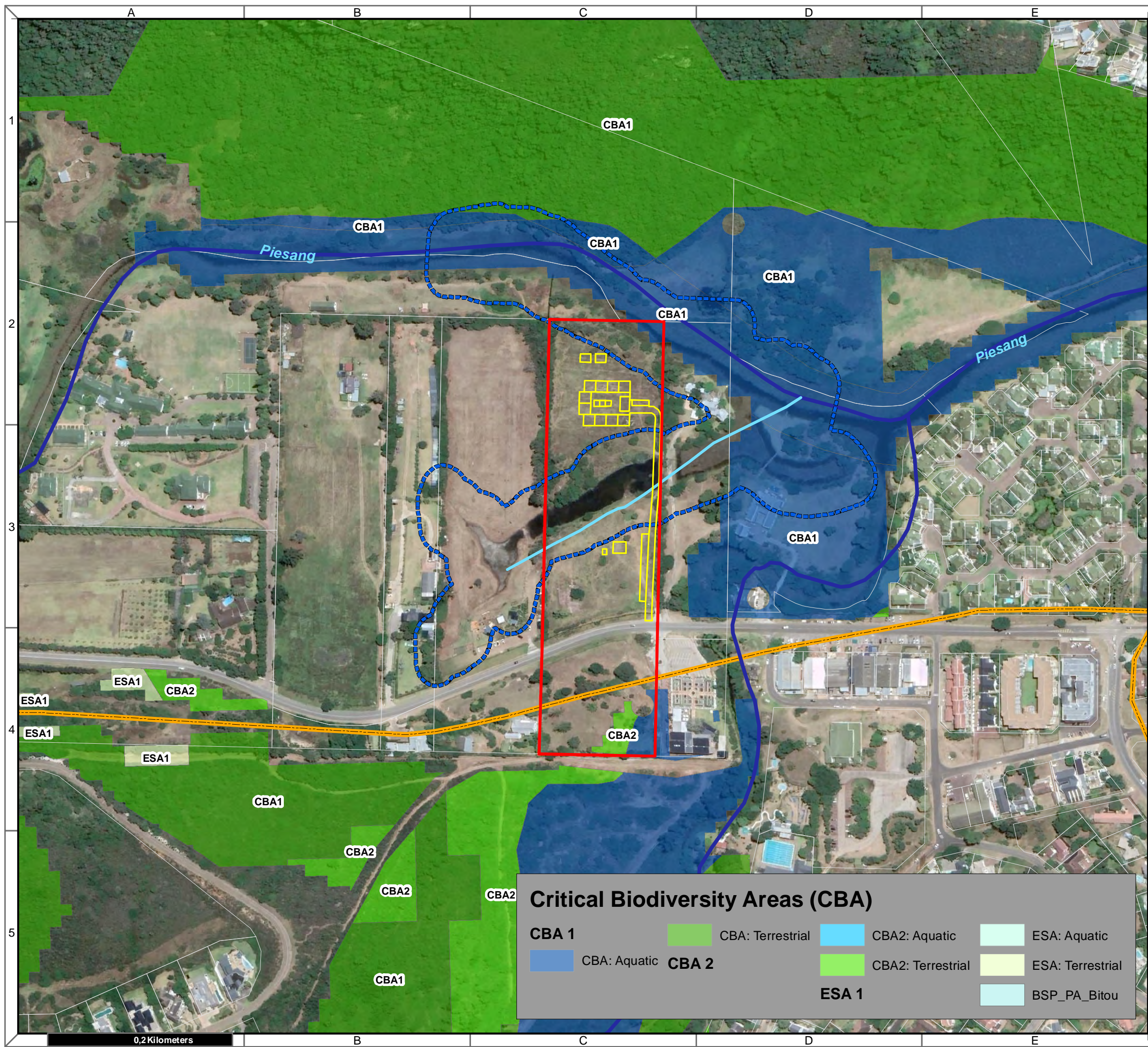
**Cape Environmental Assessment Practitioners (Pty) Ltd**  
 Telephone: +27 44 874 0365  
 Facsimile: +27 44 874 0432  
 Web: www.cape-eaprac.co.za

17 Progress St  
 PO Box 2070  
 George 6530

**VEGETATION TYPE & ECOSYSTEM STATUS**

0,2 Kilometers





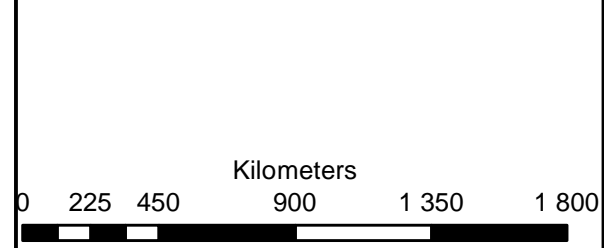
**Erf 2103 Piesang Valley  
Plettenberg Bay**

**Legend**

- Erf\_2103
- Amended\_footprint
- 20m Buffer
- Perennial Rivers
- Non-Perennial Rivers
- SECONDARY ROAD

**Notes**

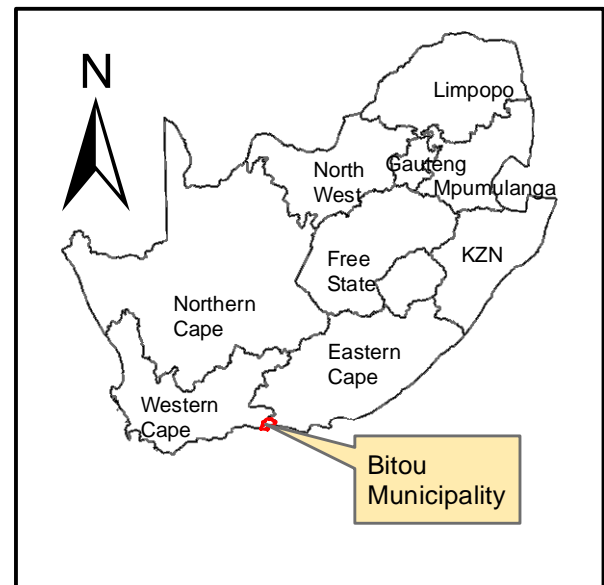
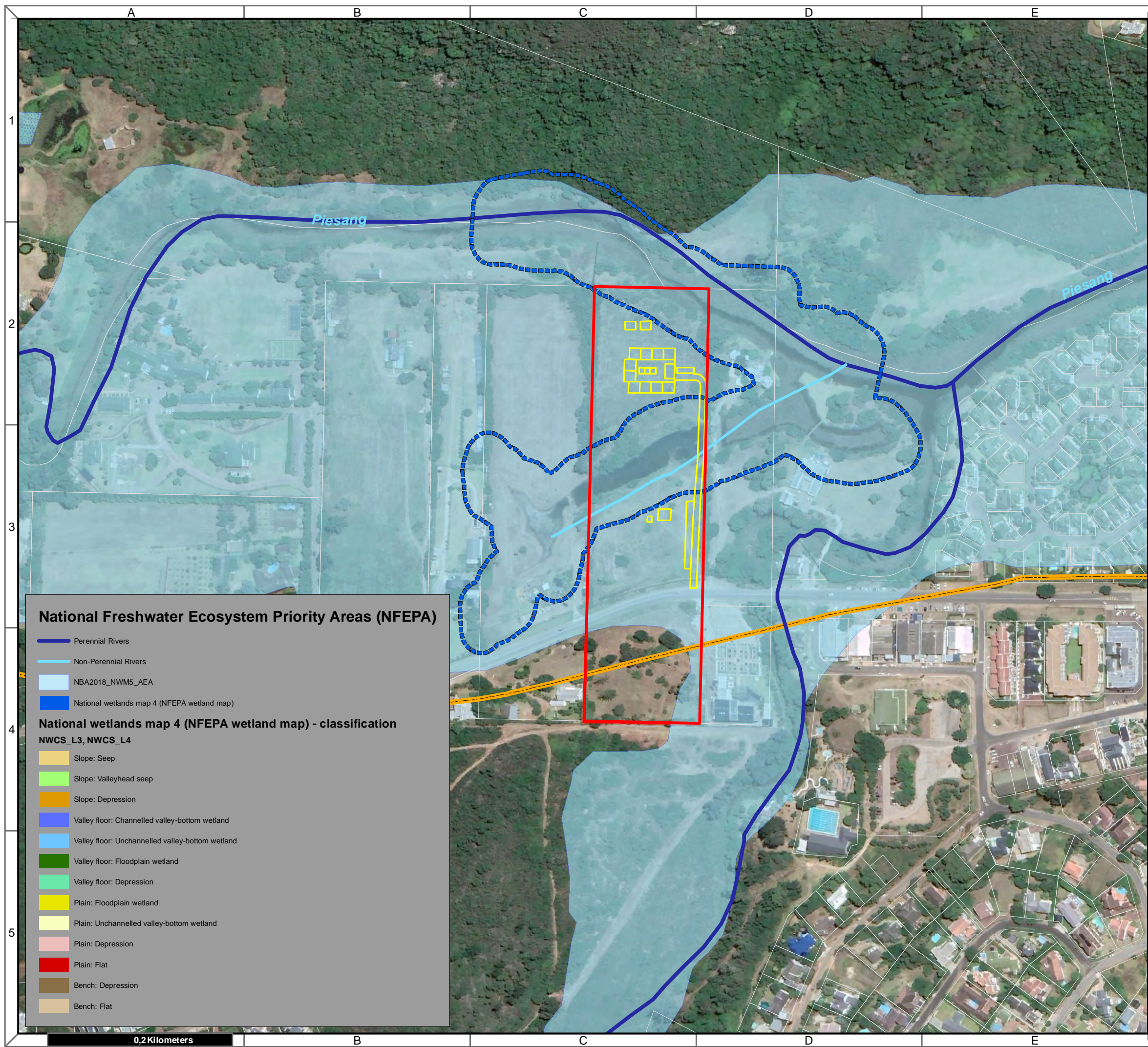
- Map Scale is 1: 4 000 when printed on A3
- Aerial image courtesy of Google Earth Pro 2021
- Imagery date February 2021
- Biodiversity data courtesy of SANBI BGIS 2020 & WCBSP 2017



Map Drawn By:	Date	Reference
Melissa Mackay	2021/05/31	BIT517

**Critical Biodiversity Areas (CBA)**

<span style="background-color: #0070C0; border: 1px solid black; display: inline-block; width: 15px; height: 10px; margin-right: 5px;"></span> CBA 1	<span style="background-color: #92D050; border: 1px solid black; display: inline-block; width: 15px; height: 10px; margin-right: 5px;"></span> CBA: Terrestrial	<span style="background-color: #00B0F0; border: 1px solid black; display: inline-block; width: 15px; height: 10px; margin-right: 5px;"></span> CBA2: Aquatic	<span style="background-color: #90EE90; border: 1px solid black; display: inline-block; width: 15px; height: 10px; margin-right: 5px;"></span> ESA: Aquatic
<span style="background-color: #0070C0; border: 1px solid black; display: inline-block; width: 15px; height: 10px; margin-right: 5px;"></span> CBA: Aquatic	<span style="background-color: #92D050; border: 1px solid black; display: inline-block; width: 15px; height: 10px; margin-right: 5px;"></span> CBA 2	<span style="background-color: #92D050; border: 1px solid black; display: inline-block; width: 15px; height: 10px; margin-right: 5px;"></span> CBA2: Terrestrial	<span style="background-color: #FFFF00; border: 1px solid black; display: inline-block; width: 15px; height: 10px; margin-right: 5px;"></span> ESA: Terrestrial
	<span style="background-color: #90EE90; border: 1px solid black; display: inline-block; width: 15px; height: 10px; margin-right: 5px;"></span> ESA 1		<span style="background-color: #ADD8E6; border: 1px solid black; display: inline-block; width: 15px; height: 10px; margin-right: 5px;"></span> BSP_PA_Bitou



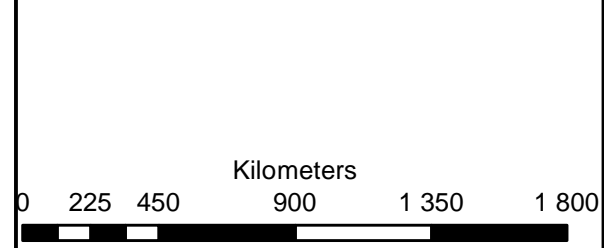
**Erf 2103 Piesang Valley  
Plettenberg Bay**

**Legend**

- Erf\_2103
- Amended\_footprint
- 20m Buffer
- SECONDARY ROAD

**Notes**

- Map Scale is 1: 4 000 when printed on A3
- Aerial image courtesy of Google Earth Pro 2021
- Imagery date February 2021
- Biodiversity data courtesy of SANBI BGIS 2020 & WCBSP 2017



Map Drawn By:	Date	Reference
Melissa Mackay	2021/05/31	BIT517

**Cape Environmental Assessment Practitioners (Pty) Ltd**  
 Telephone: +27 44 874 0365  
 Facsimile: +27 44 874 0432  
 Web: www.cape-eaprac.co.za  
 17 Progress St  
 PO Box 2070  
 George 6530

**NATIONAL FRESHWATER ECOSYSTEM PRIORITY AREAS (NFEPA)**

**National Freshwater Ecosystem Priority Areas (NFEPA)**

- Perennial Rivers
- Non-Perennial Rivers
- NBA2018\_NWM5\_AEA
- National wetlands map 4 (NFEPA wetland map)

**National wetlands map 4 (NFEPA wetland map) - classification**  
 NWCS\_L3, NWCS\_L4

- Slope: Seep
- Slope: Valleyhead seep
- Slope: Depression
- Valley floor: Channelled valley-bottom wetland
- Valley floor: Unchannelled valley-bottom wetland
- Valley floor: Floodplain wetland
- Valley floor: Depression
- Plain: Floodplain wetland
- Plain: Unchannelled valley-bottom wetland
- Plain: Depression
- Plain: Flat
- Bench: Depression
- Bench: Flat

0,2 Kilometers