



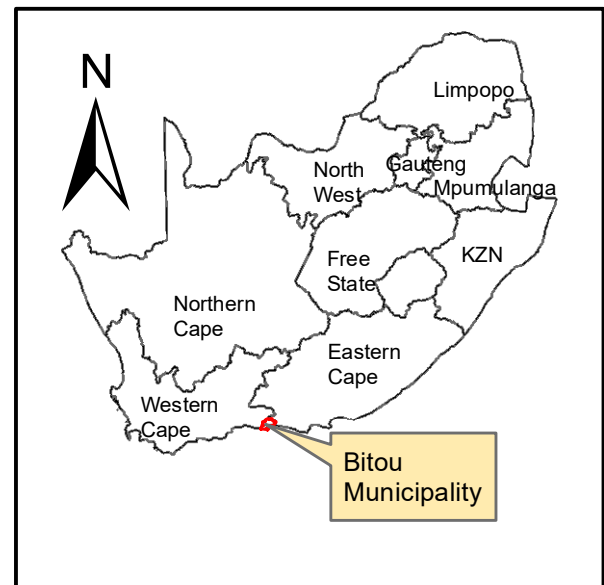
South Outeniqua Sandstone Fynbos

Vegetation Type & Ecosystem Status

- Cape Seashore Vegetation, LC (2011), LC (2018)
- Goukamma Dune Thicket, None (2011), LC (2018)
- South Outeniqua Sandstone Fynbos, LC (2011), LC (2018)

Goukamma Dune Thicket

Cape Seashore Vegetation



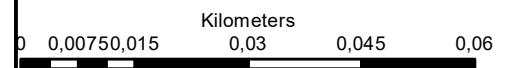
**House Maritz
Erf 390 & Remainder 141
Keurboomstrand**

Legend

- Erf_390
- Remainder_Erf_141

Notes

- Map Scale is 1: 1 000 when printed on A3
- Aerial image courtesy of Google Earth Pro 2021
- Imagery date January 2020
- Biodiversity data courtesy of SANBI BGIS 2020 & WCBSP 2017
- 2018 Threat Status Assessment (Skowno, A et al August 2019)
- LC (Least Concern), VU (Vulnerable), EN (Endangered), CR (Critically Endangered)

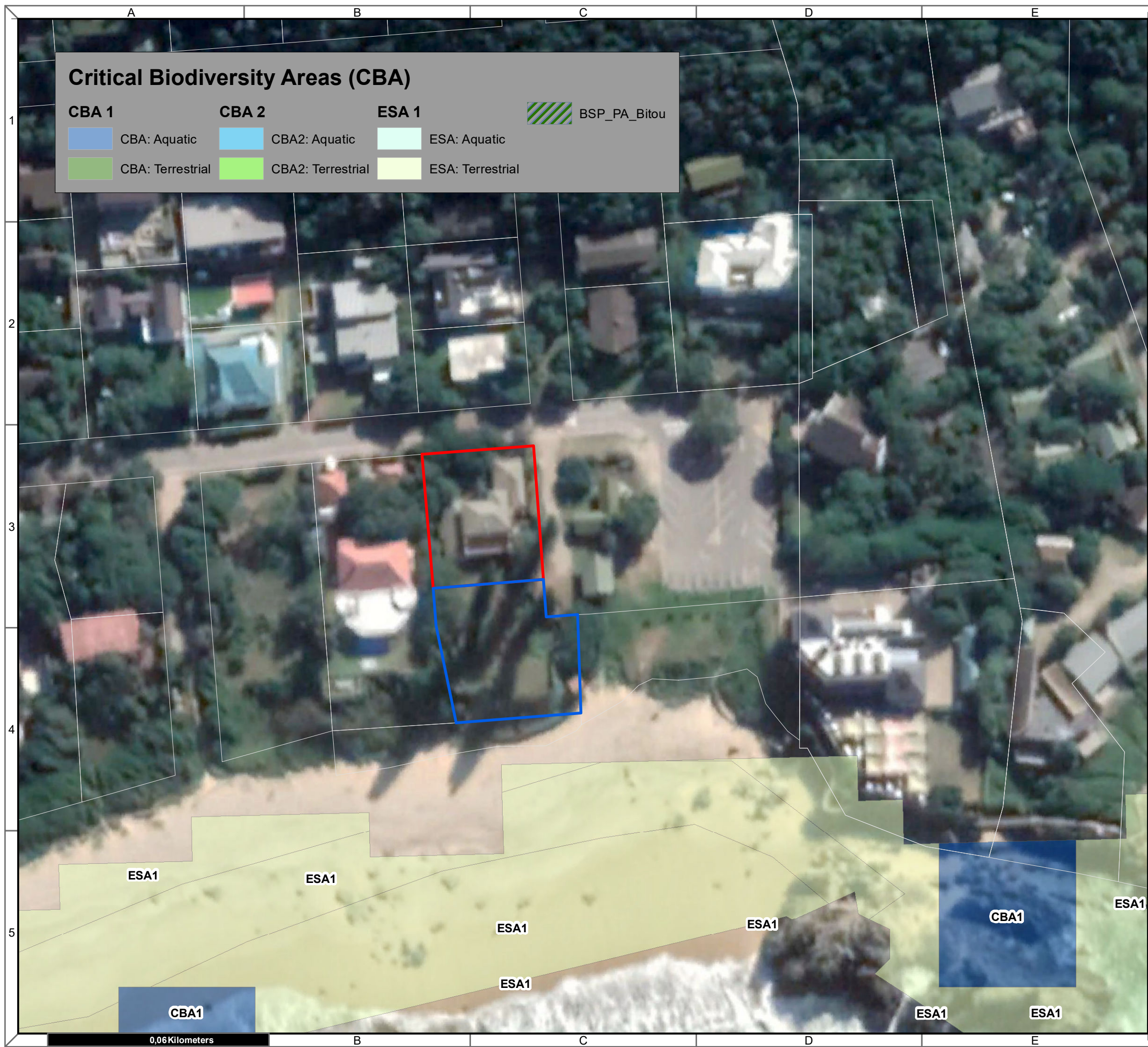


Map Drawn By:	Date	Reference
Melissa Mackay	2021/06/30	BIT667

Cape Environmental Assessment Practitioners (Pty) Ltd
 Reg. No. 2008/004627/07
 Telephone: +27 44 874 0365
 Facsimile: +27 44 874 0432
 Web: www.cape-eaprac.co.za
 17 Progress St
 PO Box 2070
 George 6530

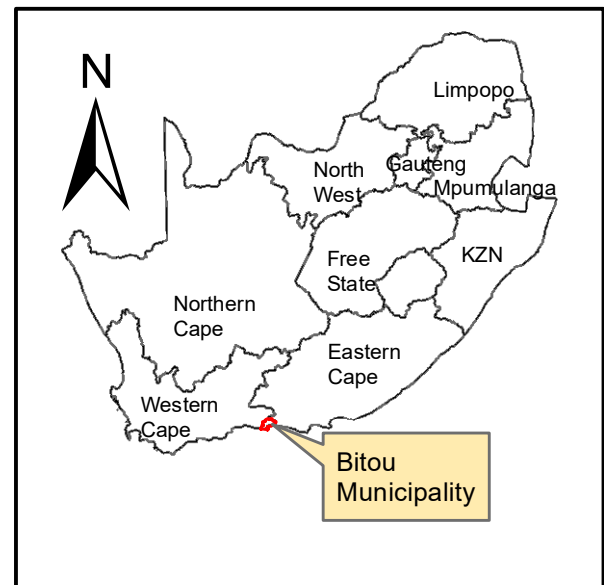
VEGETATION TYPE & ECOSYSTEM STATUS

0,06 Kilometers



Critical Biodiversity Areas (CBA)

CBA 1	CBA 2	ESA 1	BSP_PA_Bitou
CBA: Aquatic	CBA2: Aquatic	ESA: Aquatic	BSP_PA_Bitou
CBA: Terrestrial	CBA2: Terrestrial	ESA: Terrestrial	



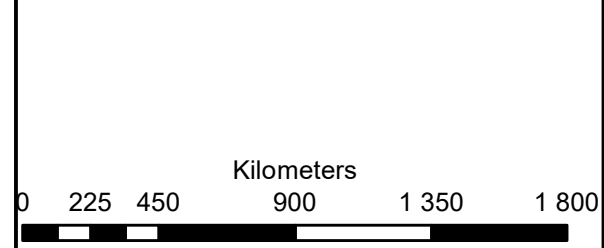
**House Maritz
Erf 390 & Remainder 141
Keurboomstrand**

Legend

	Erf_390
	Remainder_Erf_141

Notes

- Map Scale is 1: 1 000 when printed on A3
- Aerial image courtesy of Google Earth Pro 2021
- Imagery date January 2020
- Biodiversity data courtesy of SANBI BGIS 2020 & WCBSP 2017

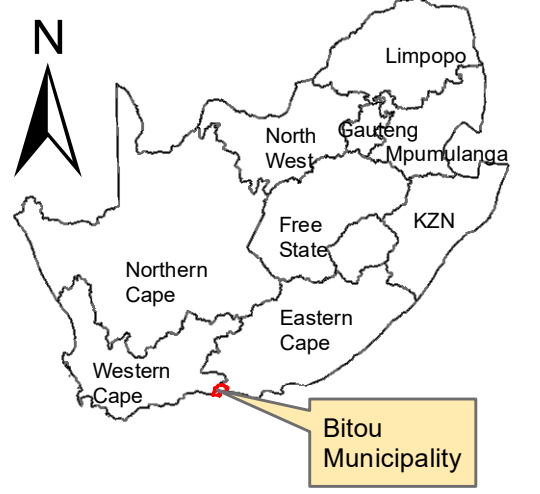
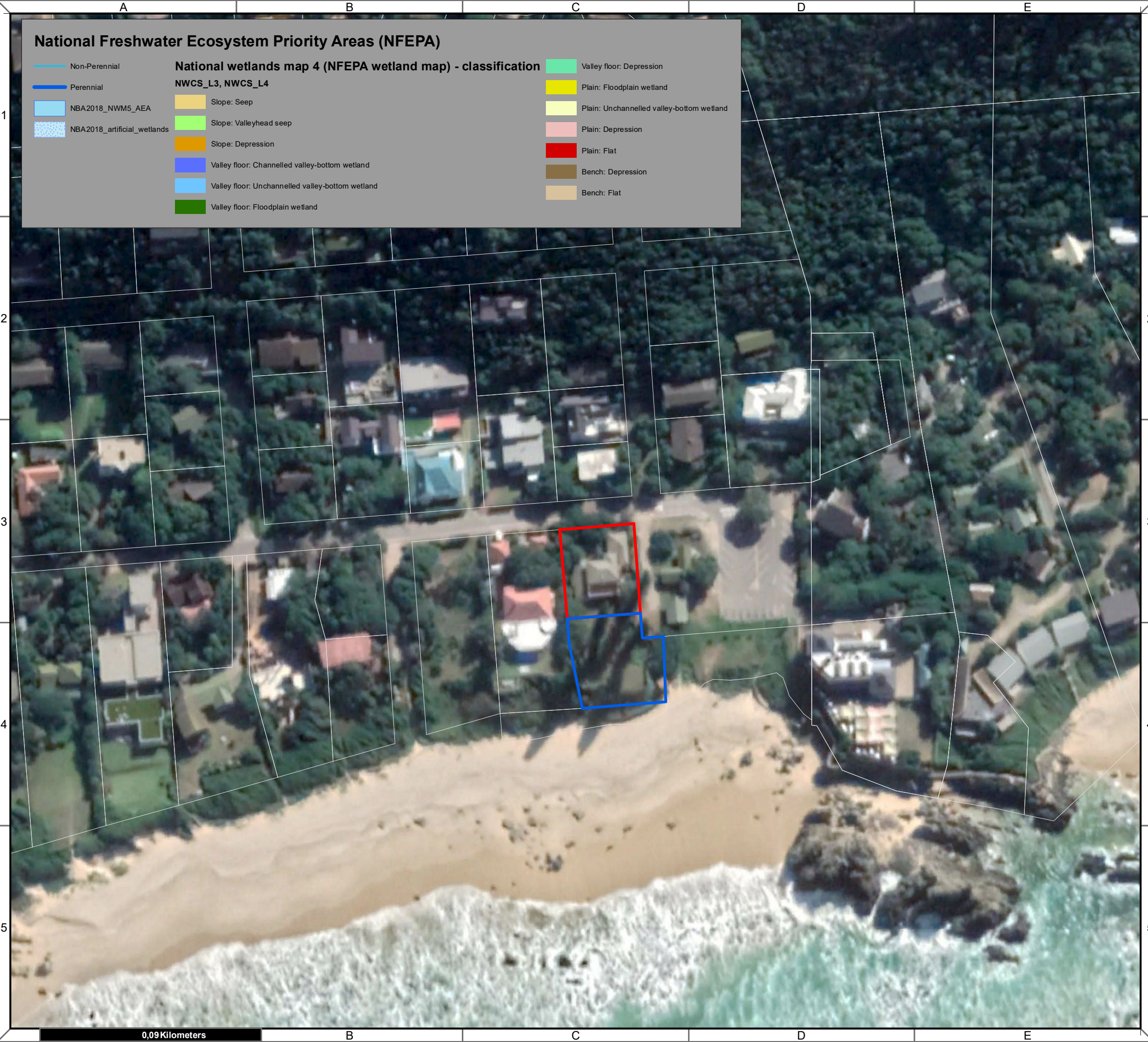


Map Drawn By:	Date	Reference
Melissa Mackay	2021/06/30	BIT667

Cape Environmental Assessment Practitioners (Pty) Ltd
 Telephone: +27 44 874 0365
 Facsimile: +27 44 874 0432
 Web: www.cape-eaprac.co.za
 17 Progress St
 PO Box 2070
 George 6530

National Freshwater Ecosystem Priority Areas (NFEPA)

Non-Perennial	National wetlands map 4 (NFEPA wetland map) - classification NWCS_L3, NWCS_L4	Valley floor: Depression
Perennial		Plain: Floodplain wetland
NBA2018_NWM5_AEA		Plain: Unchannelled valley-bottom wetland
NBA2018_artificial_wetlands		Plain: Depression
Slope: Seep		Plain: Flat
Slope: Valleyhead seep		Bench: Depression
Slope: Depression		Bench: Flat
Valley floor: Channelled valley-bottom wetland		
Valley floor: Unchannelled valley-bottom wetland		
Valley floor: Floodplain wetland		



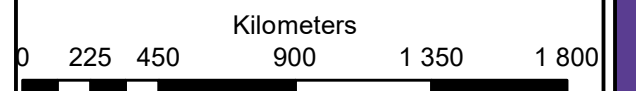
**House Maritz
Erf 390 & Remainder 141
Keurboomstrand**

Legend

- Erf_390
- Remainder_Erf_141

Notes

- Map Scale is 1: 1 500 when printed on A3
- Aerial image courtesy of Google Earth Pro 2021
- Imagery date January 2020
- Biodiversity data courtesy of SANBI BGIS 2020 and the WCBSP 2017

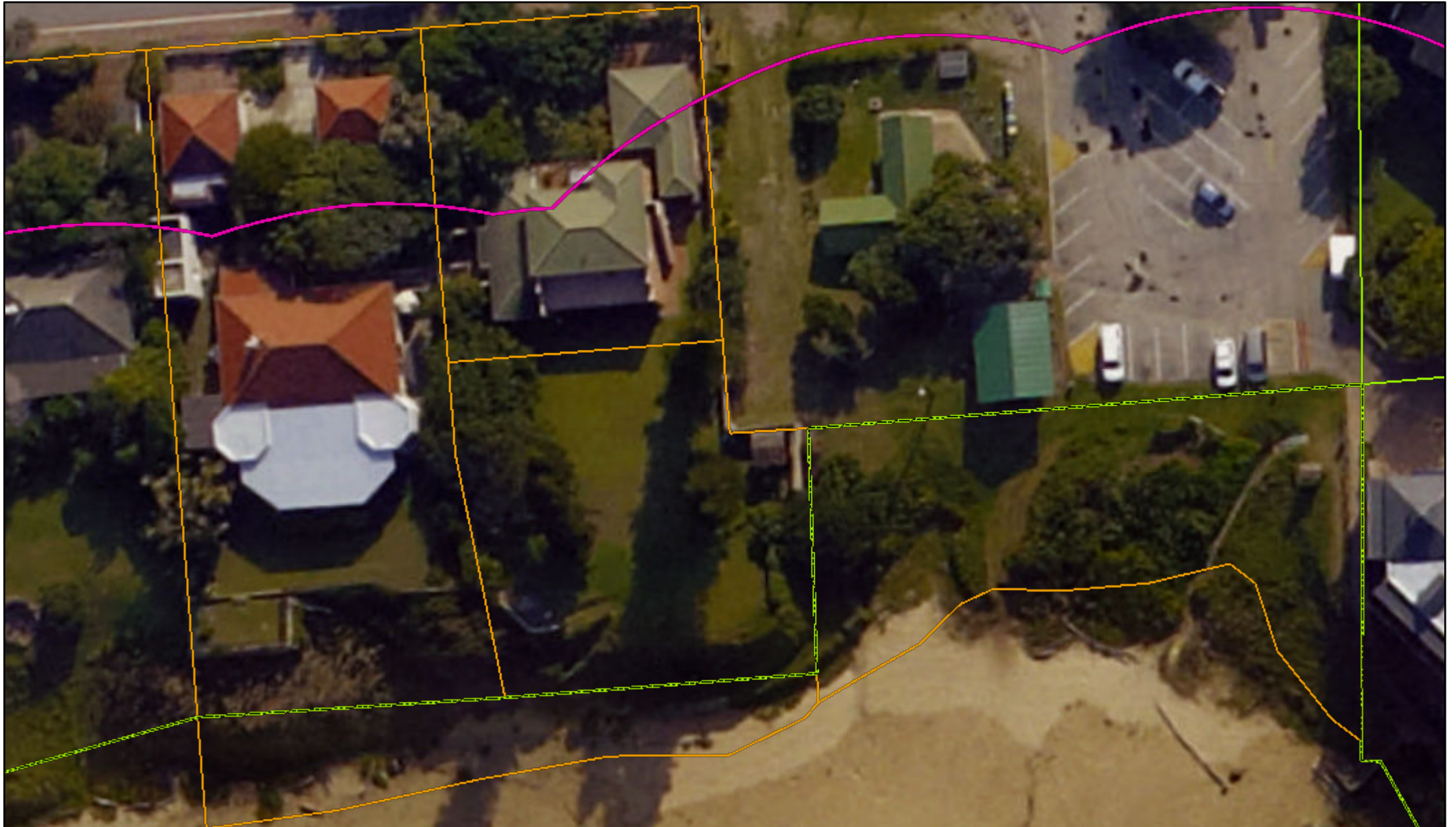


Map Drawn By:	Date	Reference
Melissa Mackay	2021/08/05	BIT667

Cape Environmental Assessment Practitioners (Pty) Ltd
 Reg. No. 2008/004627/07
 Telephone: +27 44 874 0365
 Facsimile: +27 44 874 0432
 Web: www.cape-eaprac.co.za
 17 Progress St
 PO Box 2070
 George 6530

NATIONAL FRESHWATER ECOSYSTEM PRIORITY AREAS (NFEPA)

Erf 390 & Remainder Erf 141 Keurboomstrand

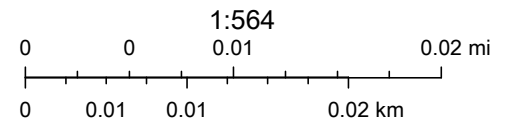


11/10/2021, 10:53:40 AM

- Development Islands
- Coastal Protection Zone
- Coastal Management Line Protected Areas
- Coastal Management Line

Garden Route Imagery 2013

- Red: Band_1
- Green: Band_2
- Blue: Band_3



Source: Esri, Maxar, GeoEye, Earthstar Geographics, CNES/Airbus DS, USDA, USGS, AeroGRID, IGN, and the GIS User Community, DEA&DP

Erf 390 & RE 141 Keurboomstrand

Legend

— Contours 5m



Scale: 1:1 128

Date created: November 16, 2020

Compiled with CapeFarmMapper



**Western Cape
Government**

Agriculture

Source: Esri, Maxar, GeoEye, Earthstar Geographics, CNES/Airbus DS, USDA, USGS, AeroGRID, IGN, and the GIS User Community
Esri, HERE, Garmin, (c) OpenStreetMap contributors, and the GIS user community
Department of Rural Development and Land Reform, Chief Directorate: National

House Maritz

Legend

 Servitude Area



Scale: 1:1 128

Date created: September 6, 2021

Compiled with CapeFarmMapper

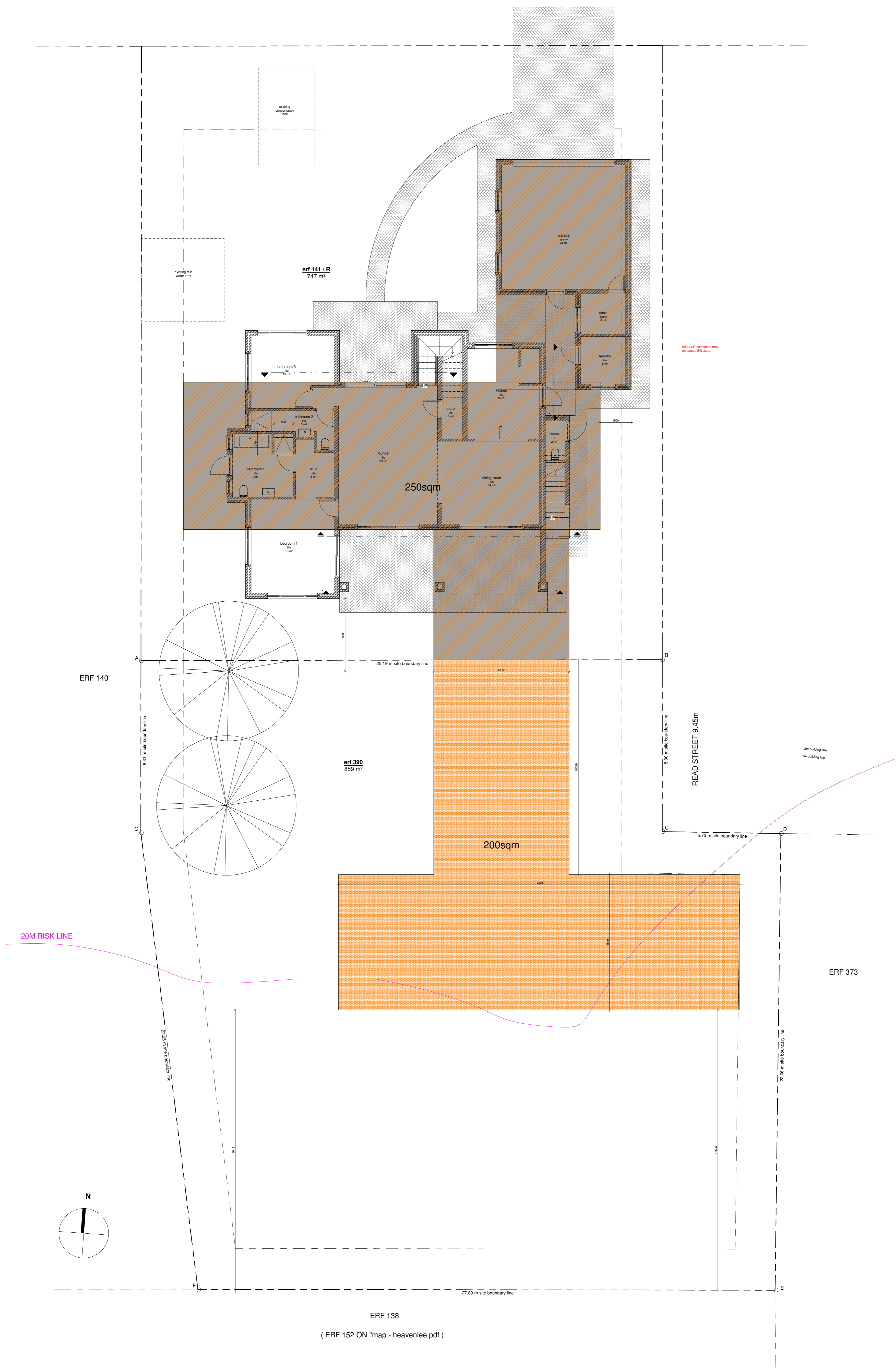


**Western Cape
Government**

Agriculture

© OpenStreetMap (and) contributors, CC-BY-SA
Department of Rural Development and Land Reform, Chief Surveyor-General

0 0.01 0.02 0.04 km



ERF 138
 (ERF 152 ON *map - heavenlee.pdf)