


CBA



Legend

BSP CBA: Degraded

 CBA2: Terrestrial

BSP CBA

 CBA: River

 CBA: Estuary

Map Center: Lon: 23°23'18.1"E
Lat: 34°1'30.6"S

Scale: 1:5,265

Date created: 2023/19/09

© OpenStreetMap (and) contributors, CC-BY-SA
CapeNature



**Western Cape
Government**
FOR YOU

ESA



Legend

BSP ESA: Restore

- ESA2: Restore from other land use

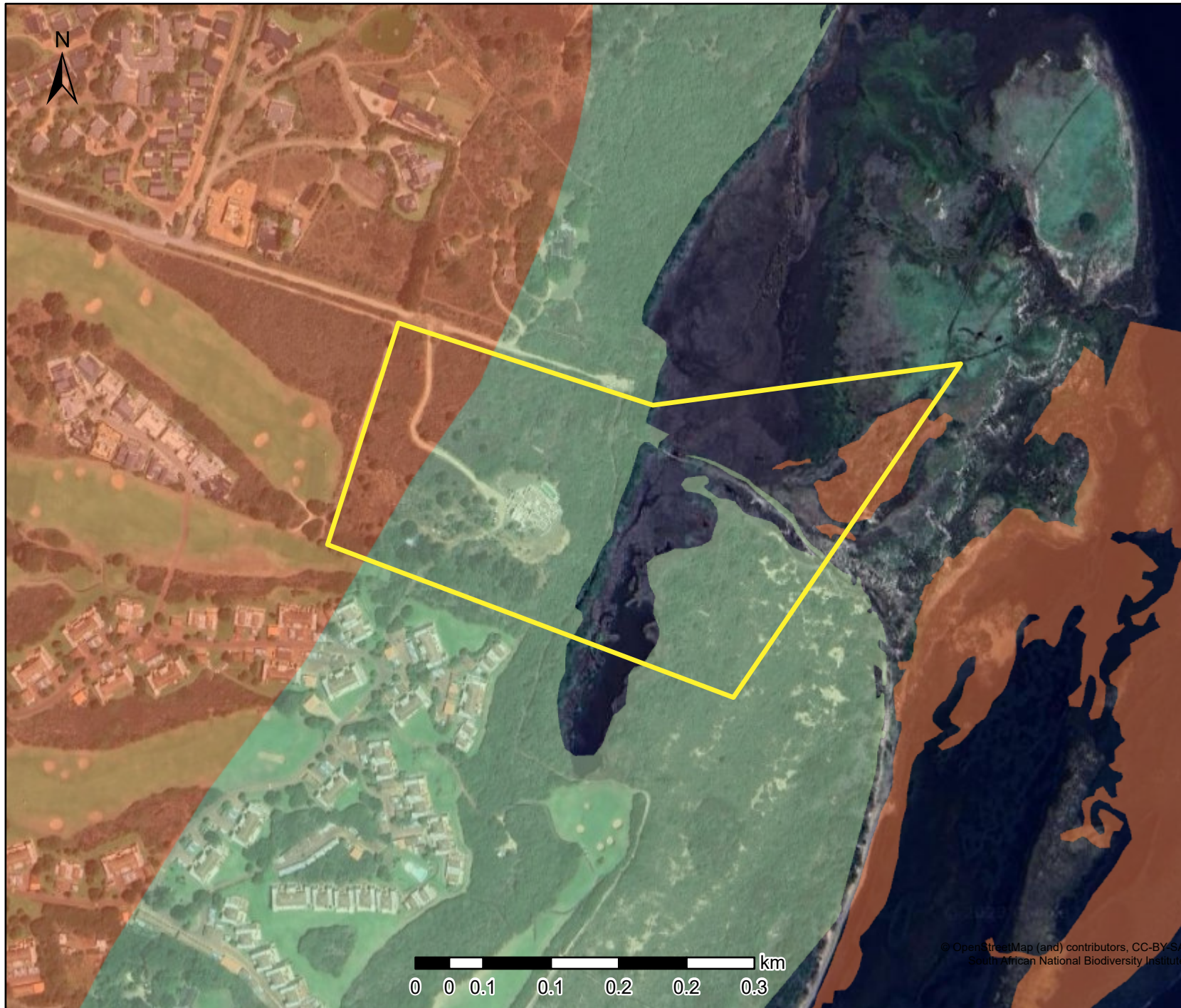
Map Center: Lon: 23°23'18.1"E
Lat: 34°1'30.6"S

Scale: 1:5,265

Date created: 2023/19/09

© OpenStreetMap (and) contributors, CC-BY-SA
CapeNature

SANBI Original



Legend

Red List of Ecosystems Original Category

- Endangered
- Least Concern

Map Center: Lon: 23°23'18.1"E
Lat: 34°1'30.6"S

Scale: 1:5,265

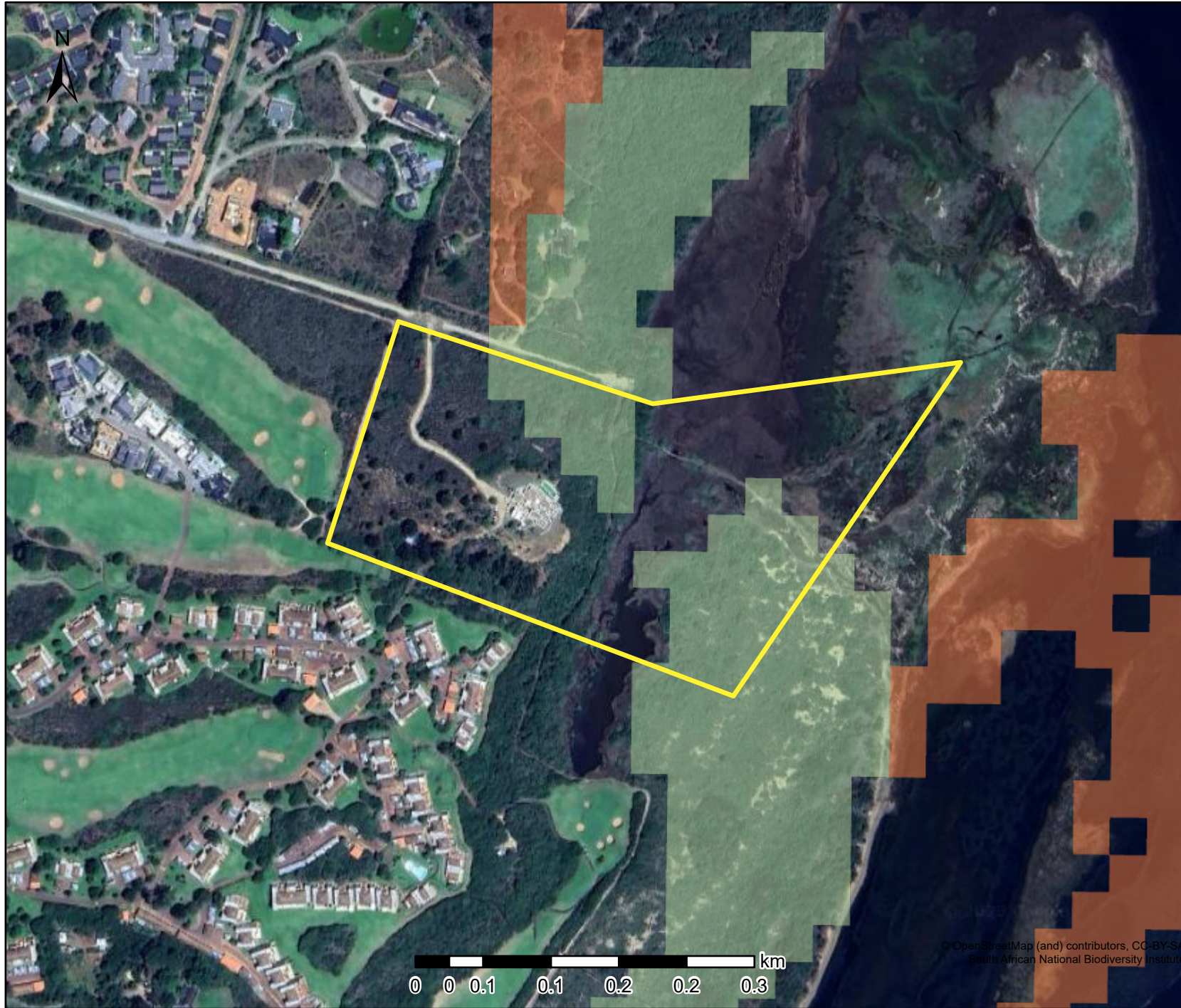
Date created: 2023/19/09

© OpenStreetMap (and) contributors, CC-BY-SA
South African National Biodiversity Institute



Western Cape
Government
FOR YOU


SANBI Remnants




Legend

Red List of Ecosystems Remnants

Category

 Endangered

 Least Concern

Map Center: Lon: 23°23'18.1"E
Lat: 34°1'30.6"S

Scale: 1:5,265

Date created: 2023/19/09

© OpenStreetMap (and) contributors, CC-BY-SA
South African National Biodiversity Institute




**Western Cape
Government**
FOR YOU

Wetlands (NFEPA)

Legend

Wetlands (NFEPA)

 Estuaries



Map Center: Lon: 23°23'18.1"E
Lat: 34°1'30.6"S

Scale: 1:5,265

Date created: 2023/19/09



**Western Cape
Government**
FOR YOU


Wetlands (NWM5)



Legend

Wetlands (NWM5)

Classification

-  Estuarine functional zone

Map Center: Lon: 23°23'18.1"E
Lat: 34°1'30.6"S

Scale: 1:5,265

Date created: 2023/19/09

© OpenStreetMap (and) contributors, CC-BY-SA



**Western Cape
Government**
FOR YOU