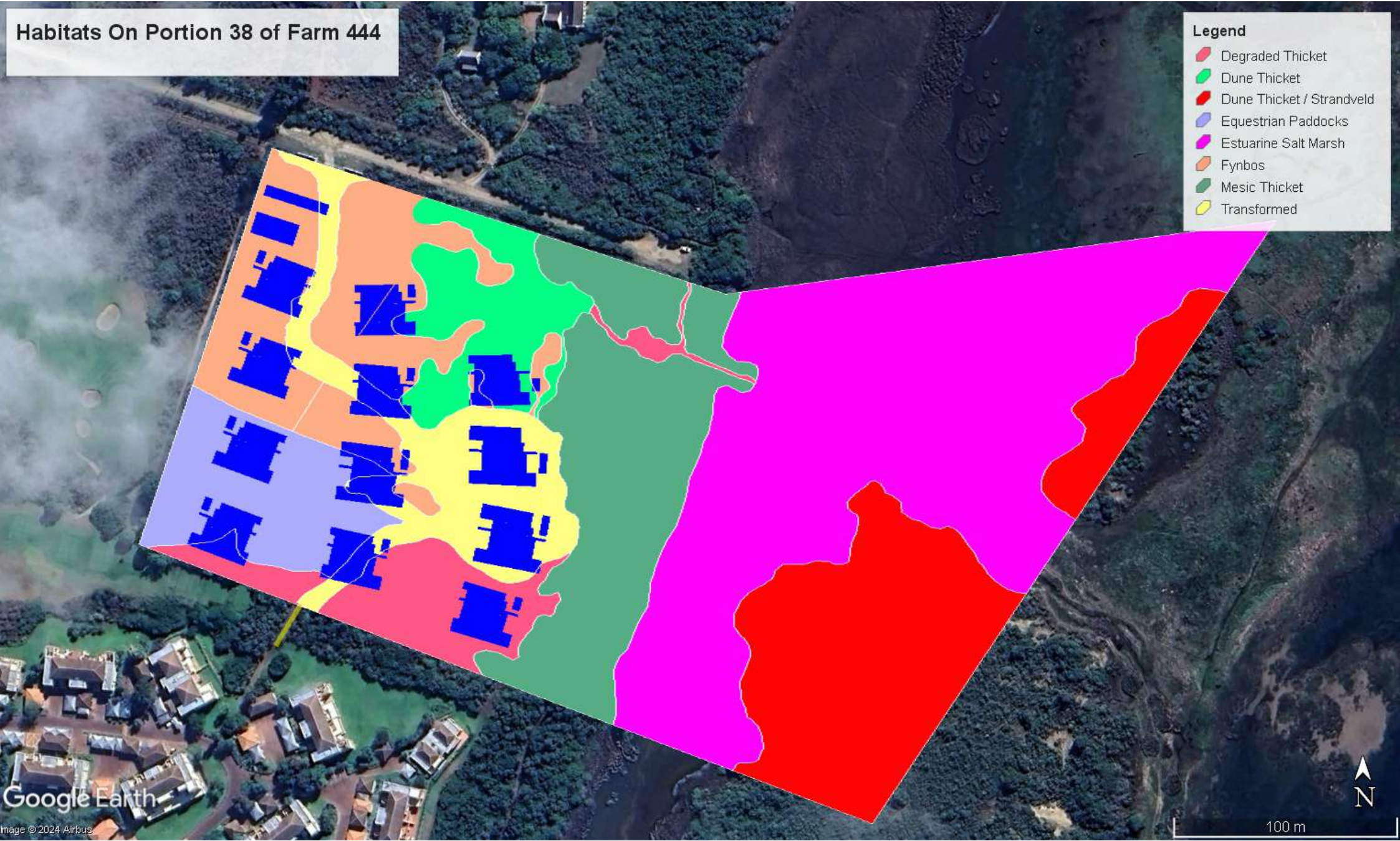


# Habitats On Portion 38 of Farm 444

**Legend**

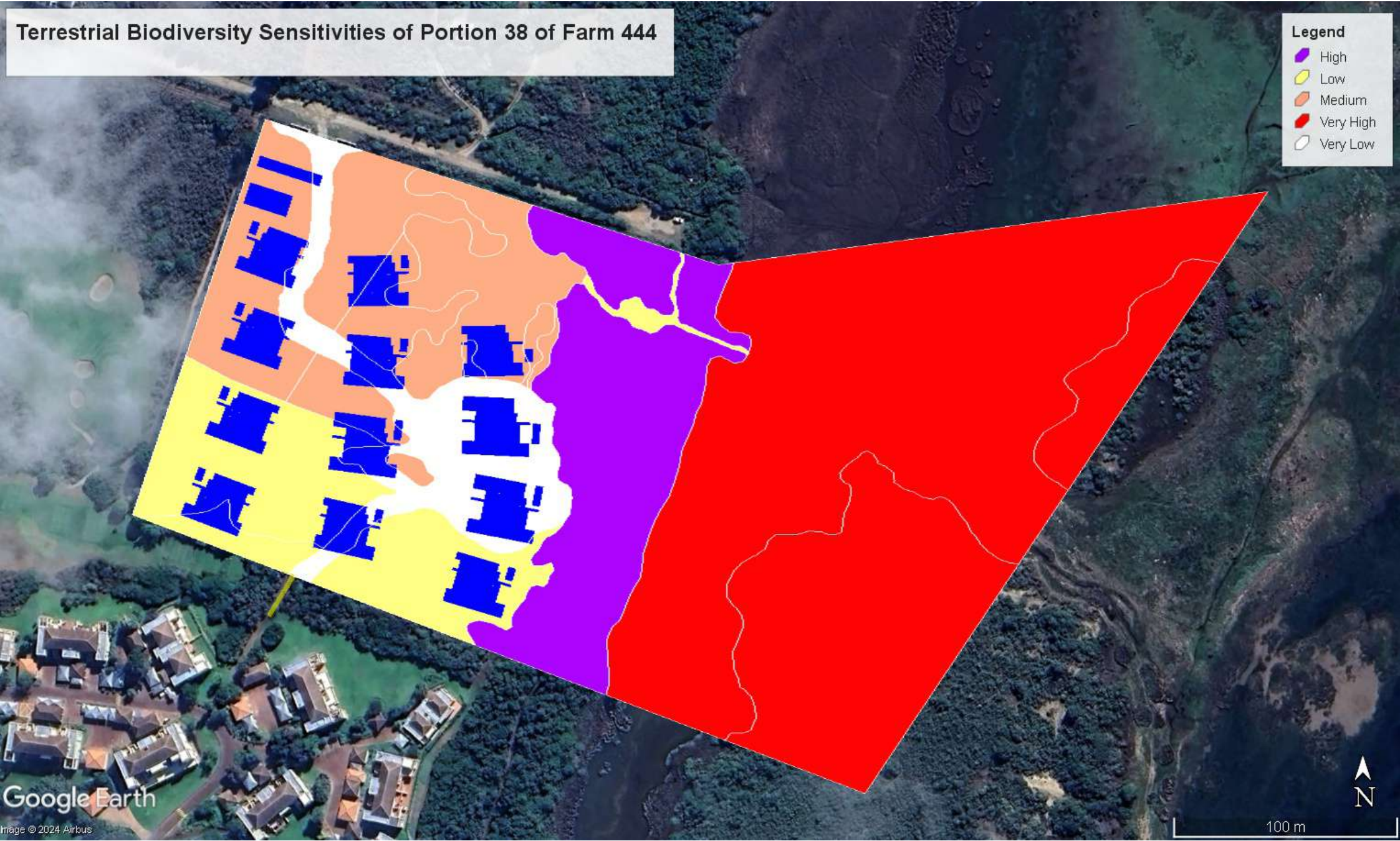
- Degraded Thicket
- Dune Thicket
- Dune Thicket / Strandveld
- Equestrian Paddocks
- Estuarine Salt Marsh
- Fynbos
- Mesic Thicket
- Transformed



**Terrestrial Biodiversity Sensitivities of Portion 38 of Farm 444**

**Legend**

- High
- Low
- Medium
- Very High
- Very Low



# Terrestrial Plant Species Sensitivities of Portion 38 of Farm 444

**Legend**

- Low
- Medium
- Very High
- Very Low

