

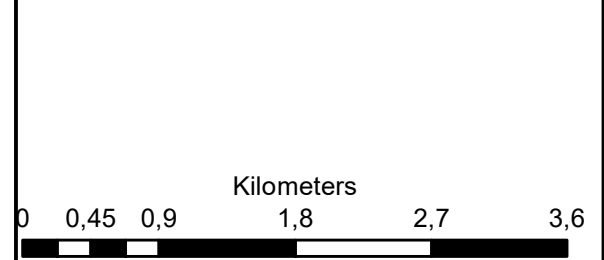
**Grootfontein PV Access Road
Remainder Farm 149
Grootfontein**

Legend

- Remainder_Farm_149
- Road Corridor
- Grootfontein PV
- Perennial River
- DRY WATER COURSE CENTER LINE
- MAIN ROAD
- SECONDARY ROAD

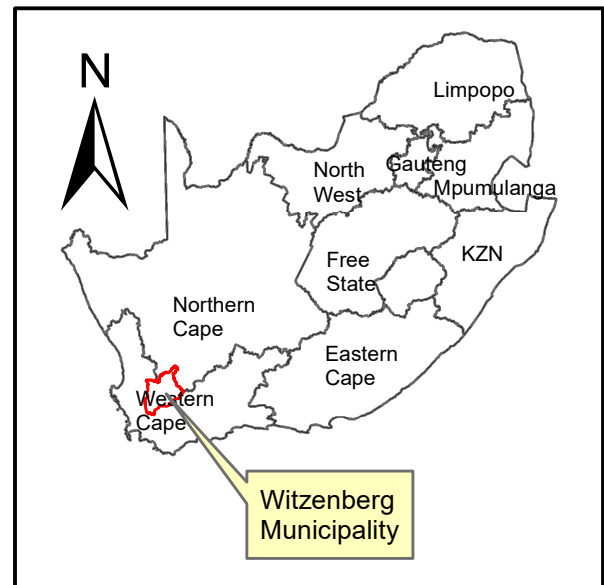
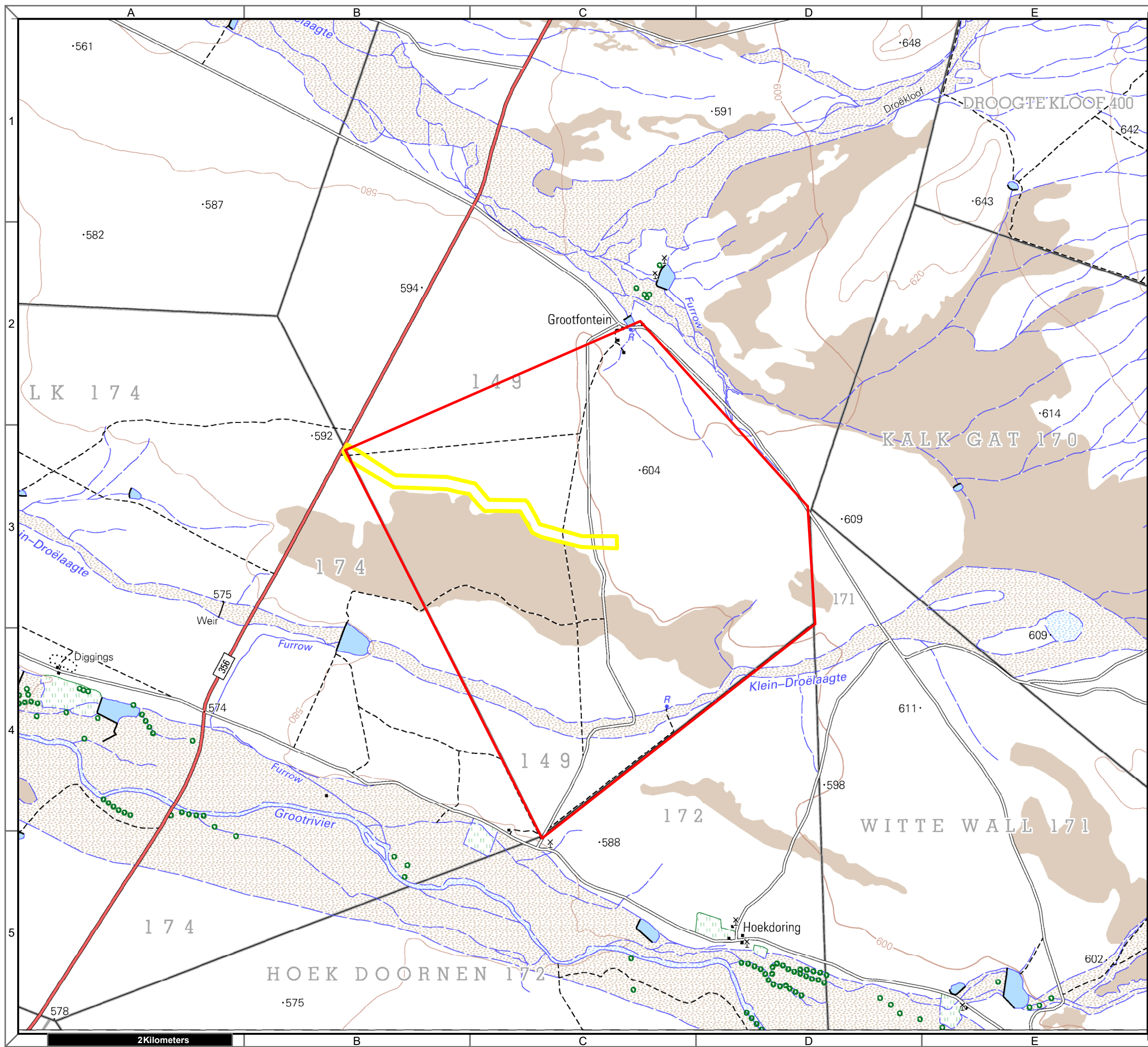
Notes

- Map Scale is 1: 50 000 when printed on A3
- Aerial image courtesy of Google Earth Pro 2022
- Imagery date October 2021



Map Drawn By:	Date	Reference
Melissa Mackay	2022/07/15	BRV727

Cape Environmental Assessment Practitioners (Pty) Ltd
 Reg. No. 2008/004627/07
 Telephone: +27 44 874 0365
 Facsimile: +27 44 874 0432
 Web: www.cape-eaprac.co.za
 17 Progress St
 PO Box 2070
 George 6530



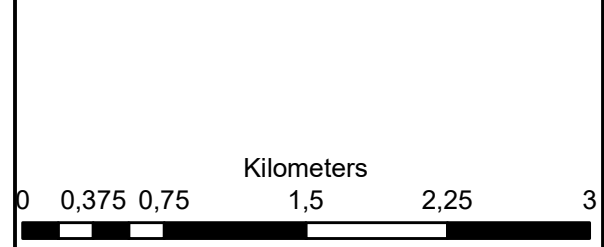
**Grootfontein PV Access Road
Remainder Farm 149
Grootfontein**

Legend

- Remainder_Farm_149
- Road Corridor

Notes

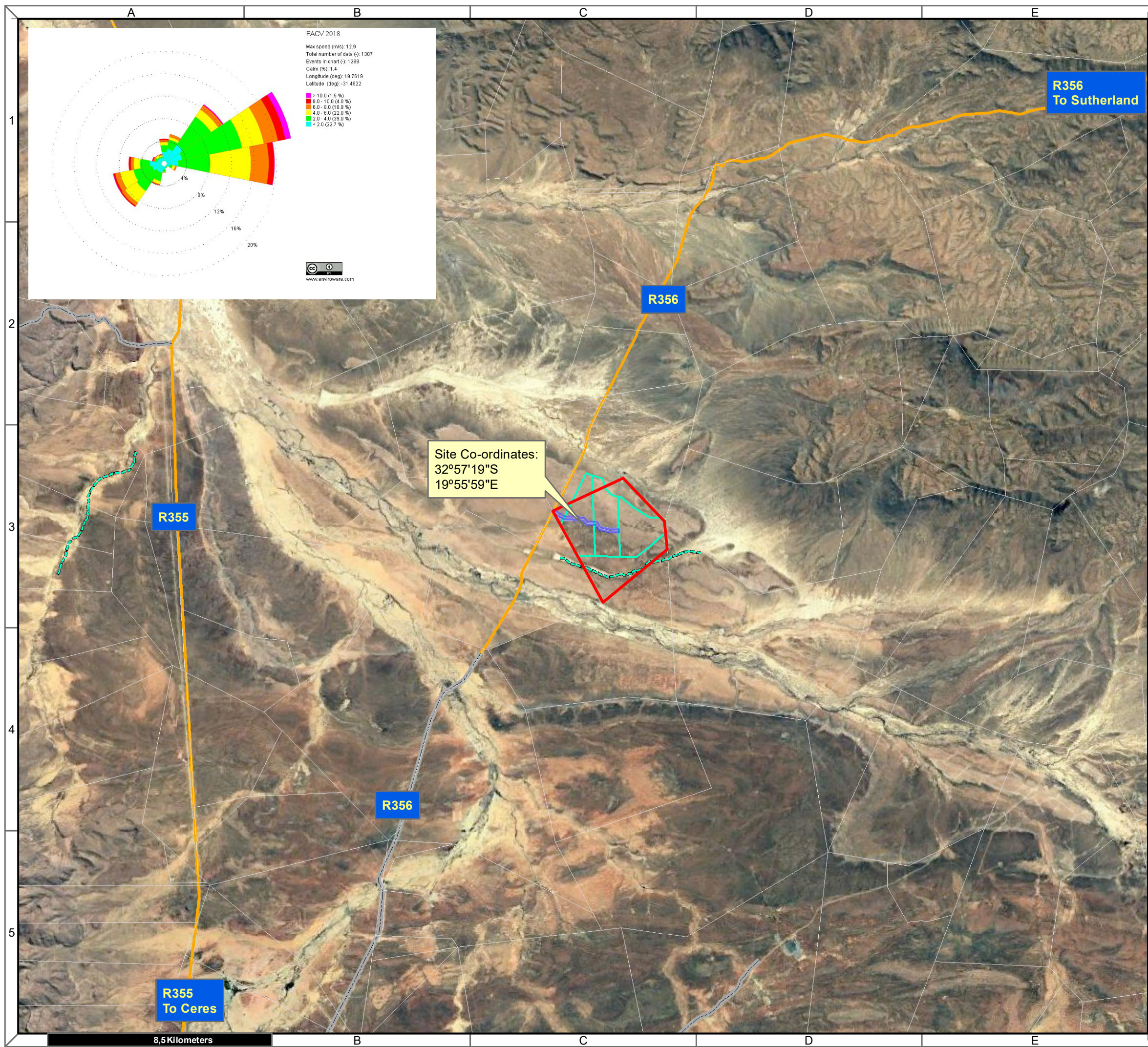
- Map Scale is 1: 40 000 when printed on A3
- Topographical data courtesy of Surveyor General
- Imagery date 2003



Map Drawn By:	Date	Reference
Melissa Mackay	2022/07/15	BRV727

Cape Environmental Assessment Practitioners (Pty) Ltd
 Telephone: +27 44 874 0365
 Facsimile: +27 44 874 0432
 Web: www.cape-eaprac.co.za
 17 Progress St
 PO Box 2070
 George 6530

1:50 000 TOPOGRAPHICAL PLANS

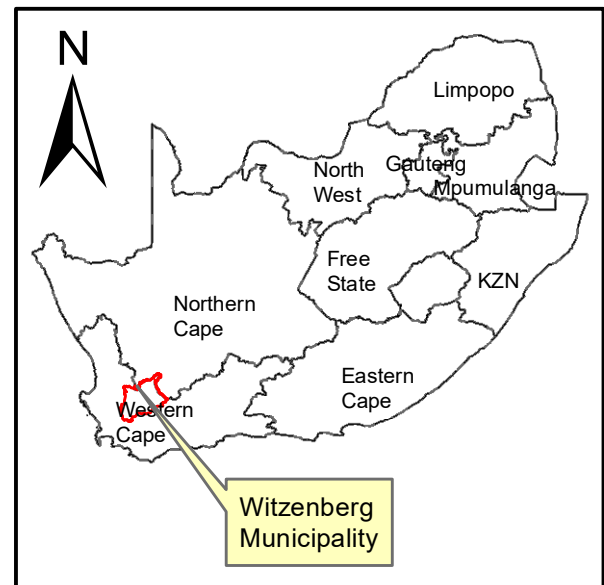


FACV 2018
 Max speed (m/s): 12.9
 Total number of data (-): 1307
 Events in chart (-): 1289
 Calm (%): 1.4
 Longitude (deg): 19.7619
 Latitude (deg): -31.4822

- > 10.0 (1.5 %)
- 8.0 - 10.0 (4.0 %)
- 6.0 - 8.0 (10.9 %)
- 4.0 - 6.0 (22.0 %)
- 2.0 - 4.0 (39.0 %)
- < 2.0 (22.7 %)



Site Co-ordinates:
 32°57'19"S
 19°55'59"E



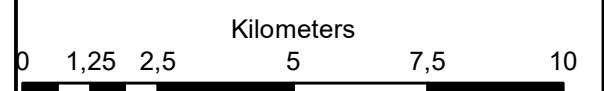
**Grootfontein PV Access Road
 Remainder Farm 149
 Grootfontein**

Legend

- Remainder_Farm_149
- Road Corridor
- Grootfontein PV
- Perennial River
- DRY WATER COURSE CENTER LINE
- MAIN ROAD
- SECONDARY ROAD

Notes

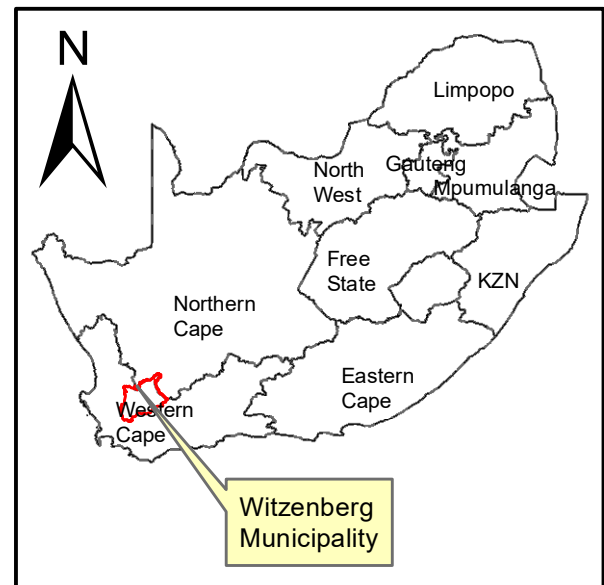
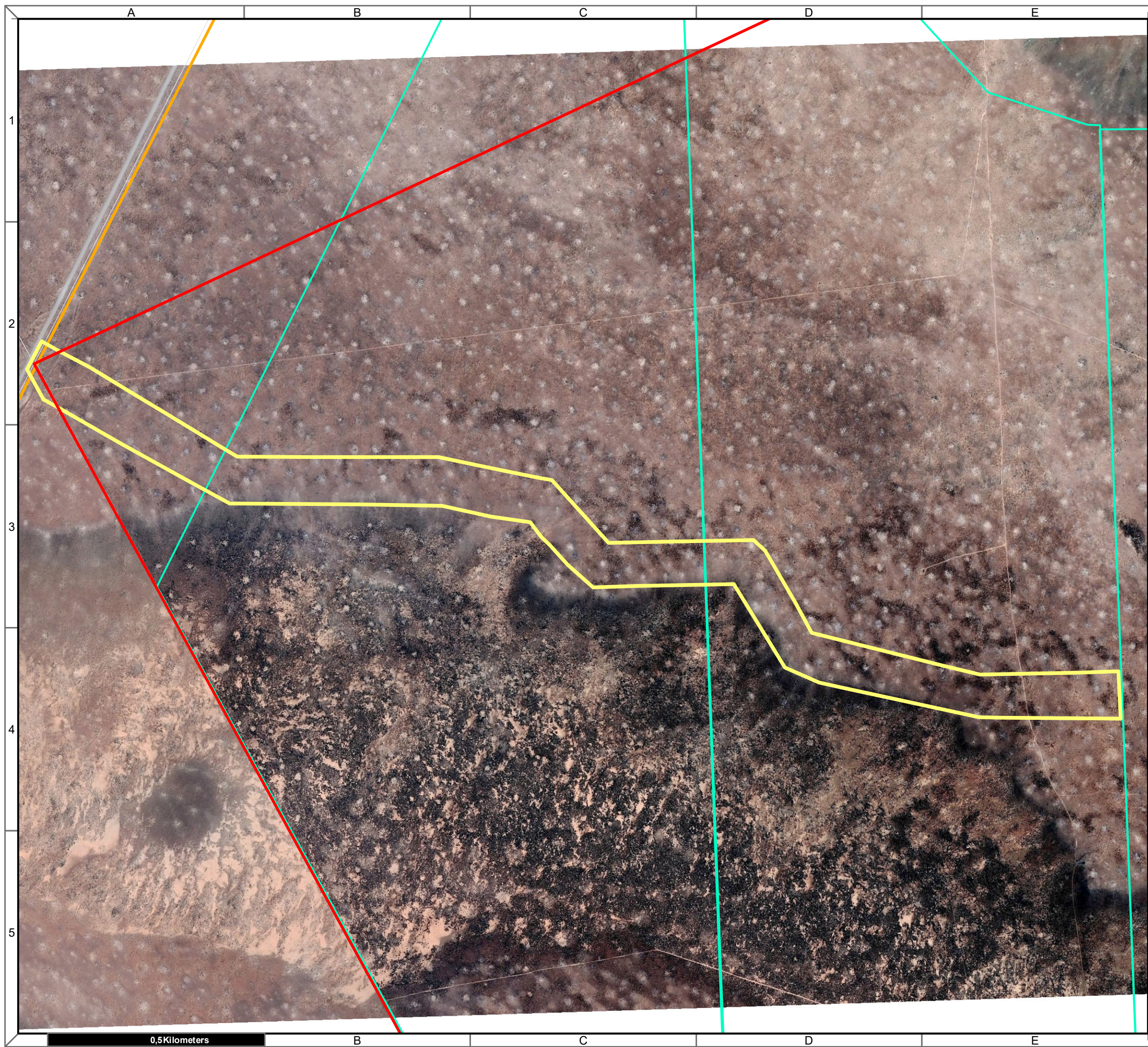
- Map Scale is 1: 140 000 when printed on A3
- Aerial image courtesy of Google Earth Pro 2022
- Imagery date October 2021
- Wind data courtesy of Metar 2018
- Nearest Metar station is Calvinia Airport (FACV) approx. 162kms on heading 352.77



Map Drawn By:	Date	Reference
Melissa Mackay	2022/07/15	BRV727

Cape Environmental Assessment Practitioners (Pty) Ltd
 Reg. No. 2008/004627/07
 Telephone: +27 44 874 0365
 Facsimile: +27 44 874 0432
 Web: www.cape-eaprac.co.za
 17 Progress St
 PO Box 2070
 George 6530

LOCATION PLAN



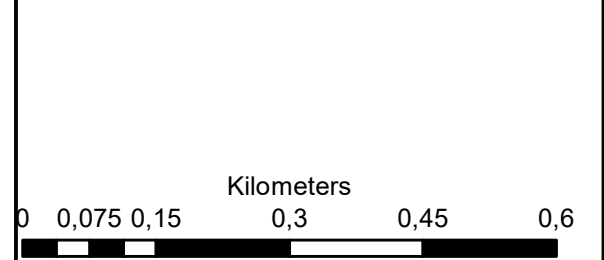
**Grootfontein PV Access Road
Remainder Farm 149
Grootfontein**

Legend

- Remainder_Farm_149
- Road Corridor
- Grootfontein PV
- Perennial River
- DRY WATER COURSE CENTER LINE
- MAIN ROAD
- SECONDARY ROAD

Notes

- Map Scale is 1: 8 500 when printed on A3
- Aerial image courtesy of Google Earth Pro 2022
- Imagery date October 2021



Map Drawn By:	Date	Reference
Melissa Mackay	2022/07/15	BRV727

Cape Environmental Assessment Practitioners (Pty) Ltd
Reg. No. 2008/004627/07

Telephone: +27 44 874 0365
 Facsimile: +27 44 874 0432
 Web: www.cape-eaprac.co.za

17 Progress St
 PO Box 2070
 George 6530