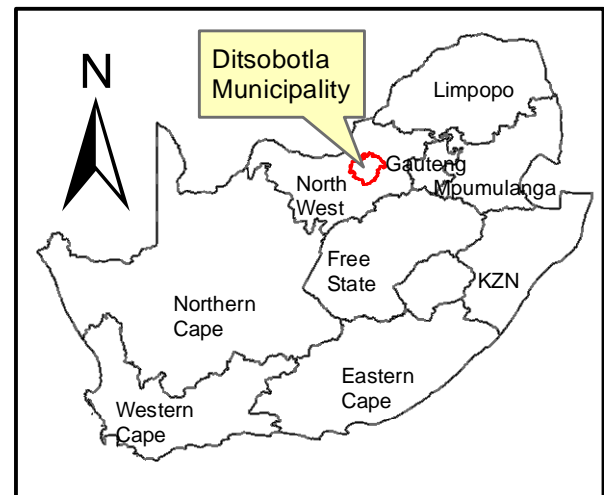


**Layout**

— Access Roads

**Euphorbia PV**

▨ Euphorbia PV



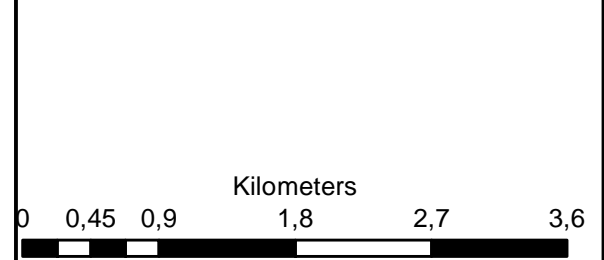
**Euphorbia PV  
Houthaalboomen North  
Portions 2, 3 & 4 of Farm 31  
Lichtenburg**

**Legend**

- Portion\_2\_of\_Farm\_31
- Portion\_3\_of\_Farm\_31
- Portion\_4\_of\_Farm\_31
- Perennial Rivers
- Non-Perennial Rivers
- ARTERIAL ROUTE
- MAIN ROAD

**Notes**

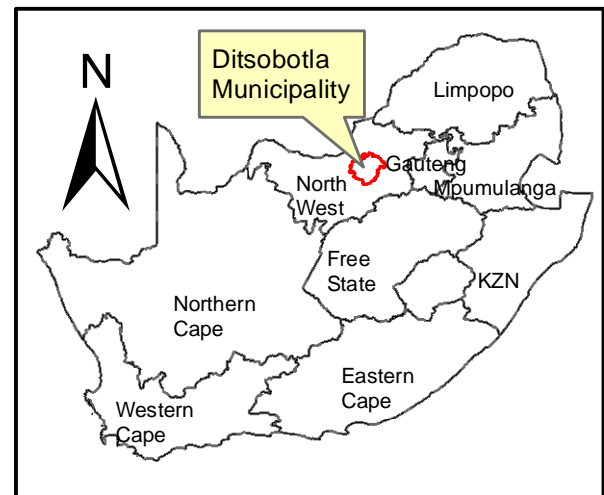
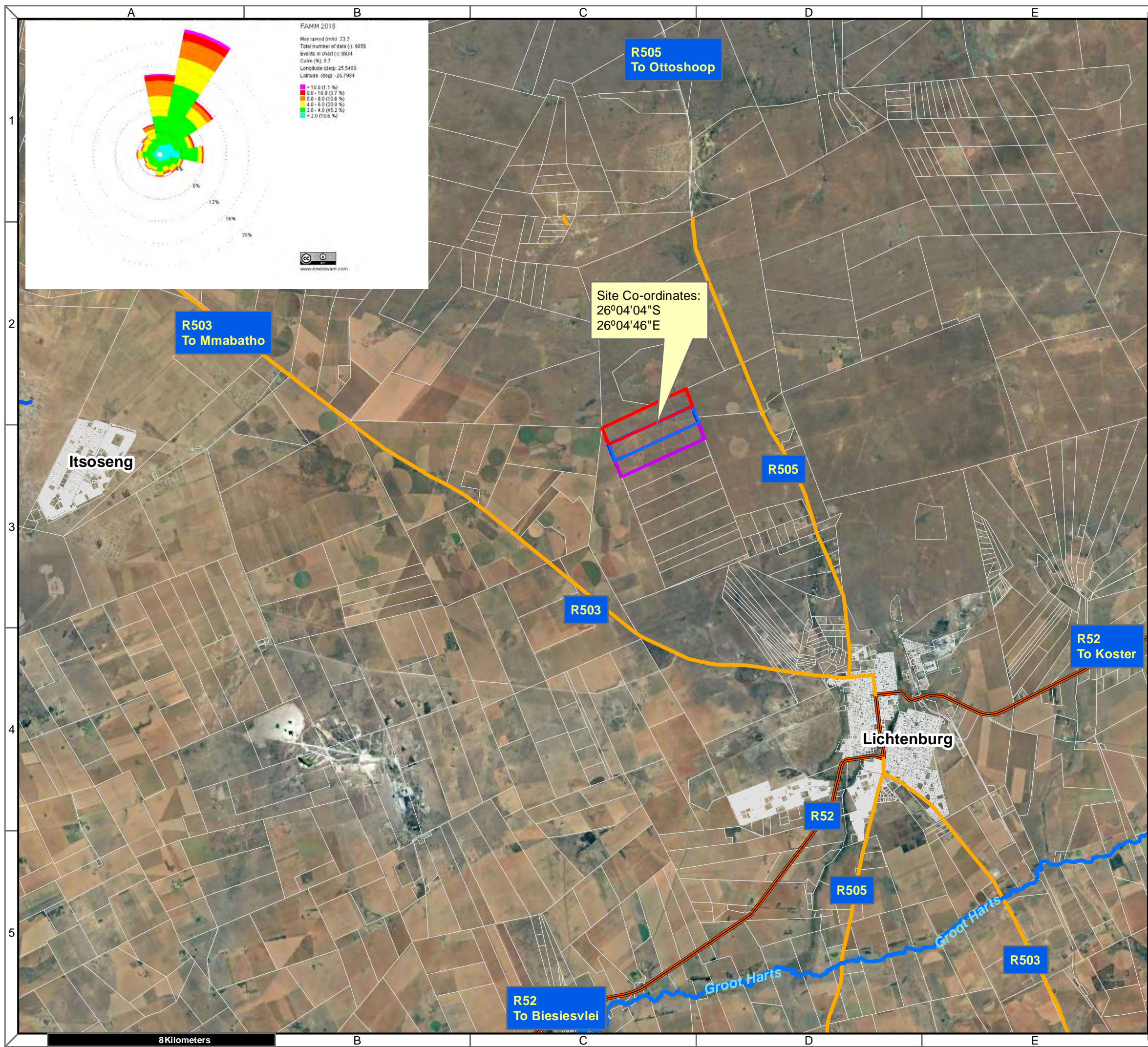
- Map Scale is 1: 50 000 when printed on A3
- Aerial image courtesy of Google Earth Pro 2022
- Imagery date May 2021



Map Drawn By:	Date	Reference
Melissa Mackay	2022/03/02	DIT724

**Cape Environmental Assessment Practitioners (Pty) Ltd**  
 Telephone: +27 44 874 0365  
 Facsimile: +27 44 874 0432  
 Web: www.cape-eaprac.co.za

17 Progress St  
 PO Box 2070  
 George 6530



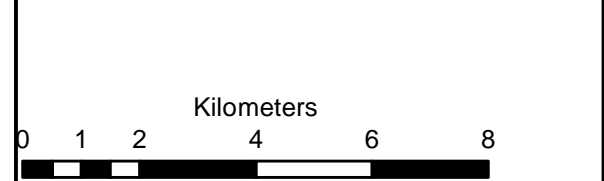
**Houthaalboomen North  
Portions 2, 3 & 4 of Farm 31  
Lichtenburg**

**Legend**

- Portion\_2\_of\_Farm\_31
- Portion\_3\_of\_Farm\_31
- Portion\_4\_of\_Farm\_31
- Perennial Rivers
- ARTERIAL ROUTE
- NATIONAL ROUTE
- MAIN ROAD

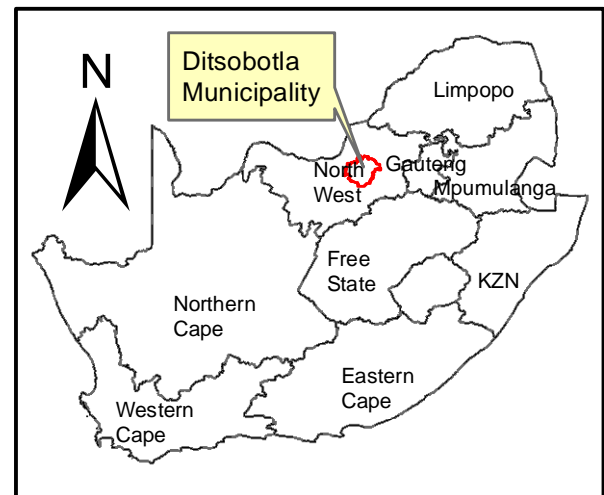
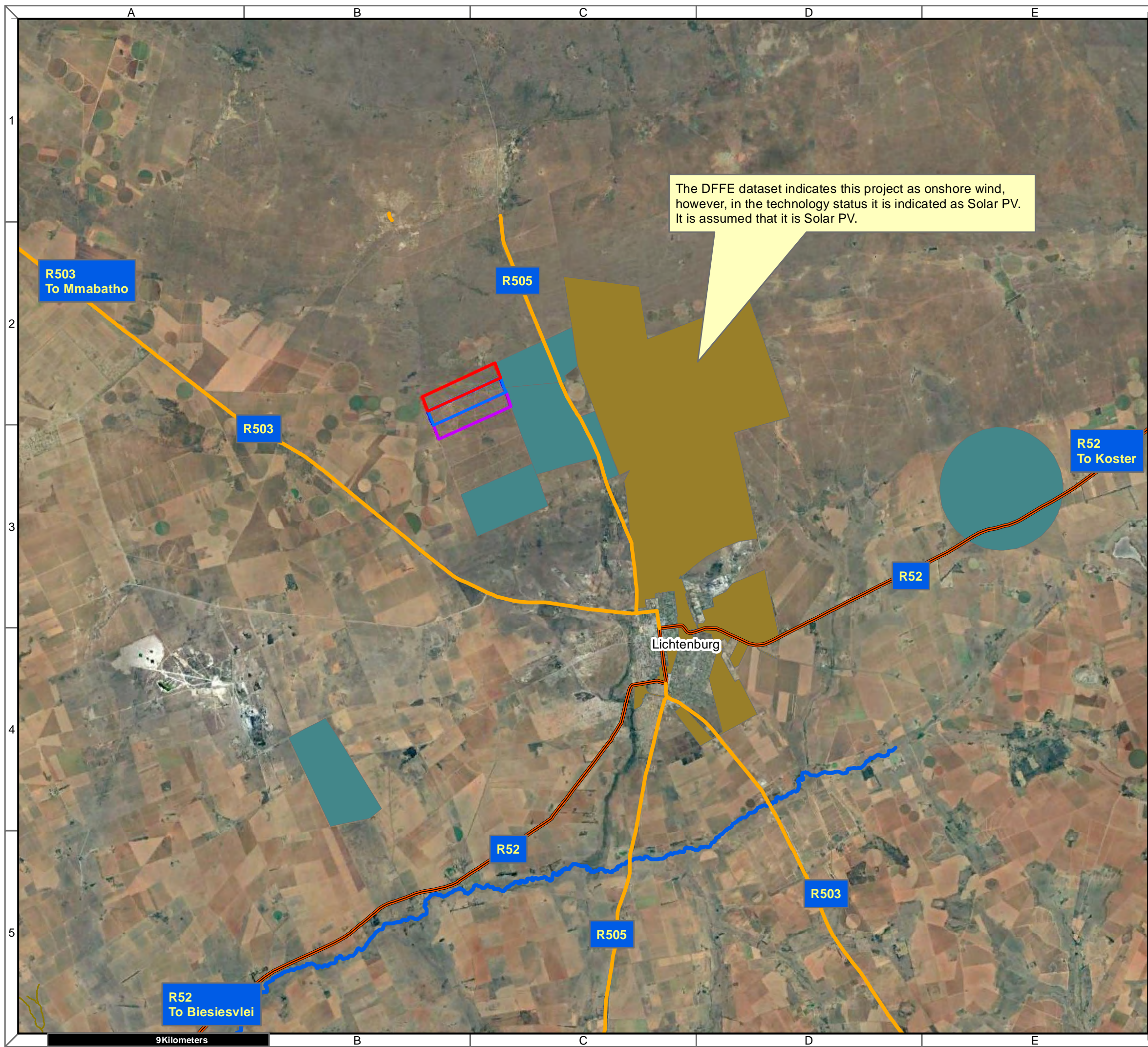
**Notes**

- Map Scale is 1: 130 000 when printed on A3
- Aerial image courtesy of Google Earth Pro 2022
- Imagery date May 2021
- Wind data courtesy of Metar 2018
- Nearest Metar station is Mmabatho Airport (FAMM) approx. 59kms on heading 299.95 degrees



Map Drawn By:	Date	Reference
Melissa Mackay	2022/03/01	DIT724

**Cape Environmental Assessment Practitioners (Pty) Ltd**  
 Telephone: +27 44 874 0365  
 Facsimile: +27 44 874 0432  
 Web: www.cape-eaprac.co.za  
 17 Progress St  
 PO Box 2070  
 George 6530



**Houthaalboomen North  
Portions 2, 3 & 4 of Farm 31  
Lichtenburg**

**Legend**

- Portion\_2\_of\_Farm\_31
- Portion\_3\_of\_Farm\_31
- Portion\_4\_of\_Farm\_31
- ARTERIAL ROUTE
- MAIN ROAD
- Perennial Rivers
- Onshore Wind
- Solar PV

**Notes**

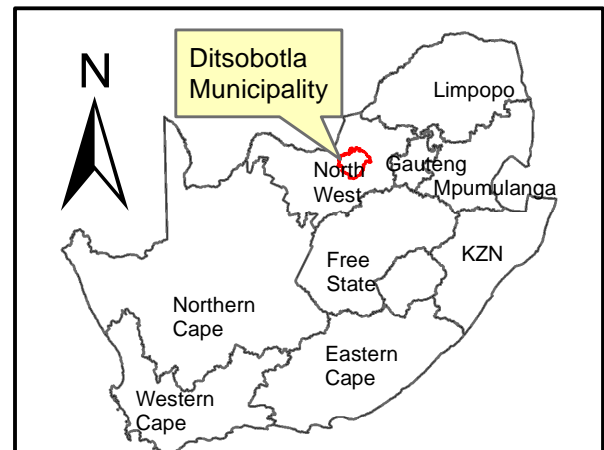
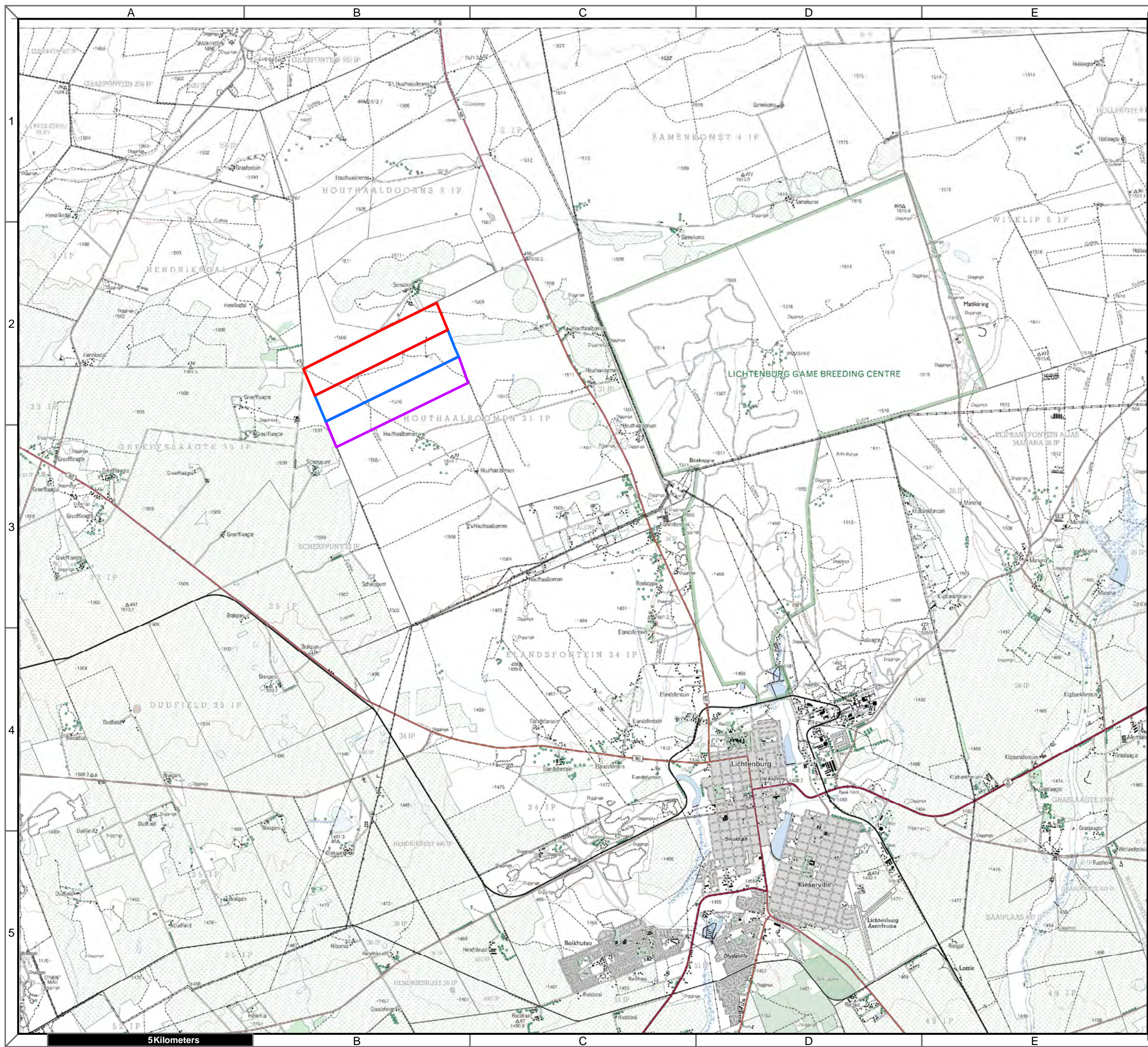
- Map Scale is 1: 150 000 when printed on A3
- Aerial image courtesy of Google Earth Pro 2022
- Imagery date May 2021
- Application data courtesy of DFFE EGIS

Kilometers

Map Drawn By:	Date	Reference
Melissa Mackay	2022/03/02	DIT724

**Cape Environmental Assessment Practitioners (Pty) Ltd**  
 Telephone: +27 44 874 0365  
 Facsimile: +27 44 874 0432  
 Web: www.cape-eaprac.co.za

17 Progress St  
 PO Box 2070  
 George 6530

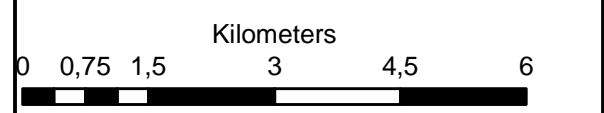


### Houthaalboomen North Portions 2, 3 & 4 of Farm 31 Lichtenburg

- Legend**
- Portion\_2\_of\_Farm\_31
  - Portion\_3\_of\_Farm\_31
  - Portion\_4\_of\_Farm\_31

**Notes**

- Map Scale is 1: 90 000 when printed on A3
- Topographical data courtesy of Surveyor General
- Imagery date 2006



Map Drawn By:	Date	Reference
Melissa Mackay	2022/03/02	DIT724

**Cape Environmental Assessment Practitioners (Pty) Ltd**  
 Telephone: +27 44 874 0365  
 Facsimile: +27 44 874 0432  
 Web: www.cape-eaprac.co.za  
 17 Progress St  
 PO Box 2070  
 George 6530

**1:50 000 TOPOGRAPHICAL PLANS**

5 Kilometers