

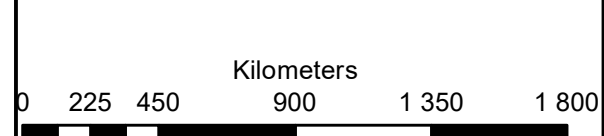
Houthaalboomen North Grid Corridor Lichtenburg

Legend

- Eskom Switching Station
- Grid Corridor
- Portion_2_of_Farm_31
- Portion_3_of_Farm_31
- Portion_4_of_Farm_31
- Verbena PV
- Hillardia PV
- Euphorbia PV
- MAIN ROAD
- OTHER ACCESS
- Perennial Rivers
- Non-Perennial Rivers

Notes

- Map Scale is 1: 35 000 when printed on A3
- Aerial image courtesy of Google Earth Pro 2021
- Imagery date April 2021
- Biodiversity data courtesy of SANBI BGIS 2020
- North West CBA 2015 dataset



Map Drawn By:	Date	Reference
Melissa Mackay	2022/09/09	DIT724

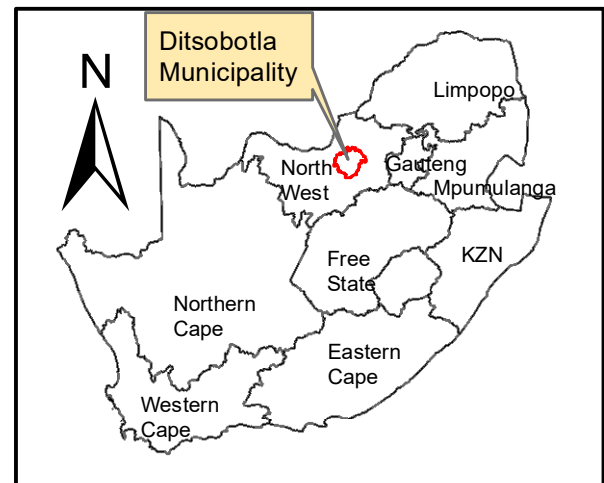
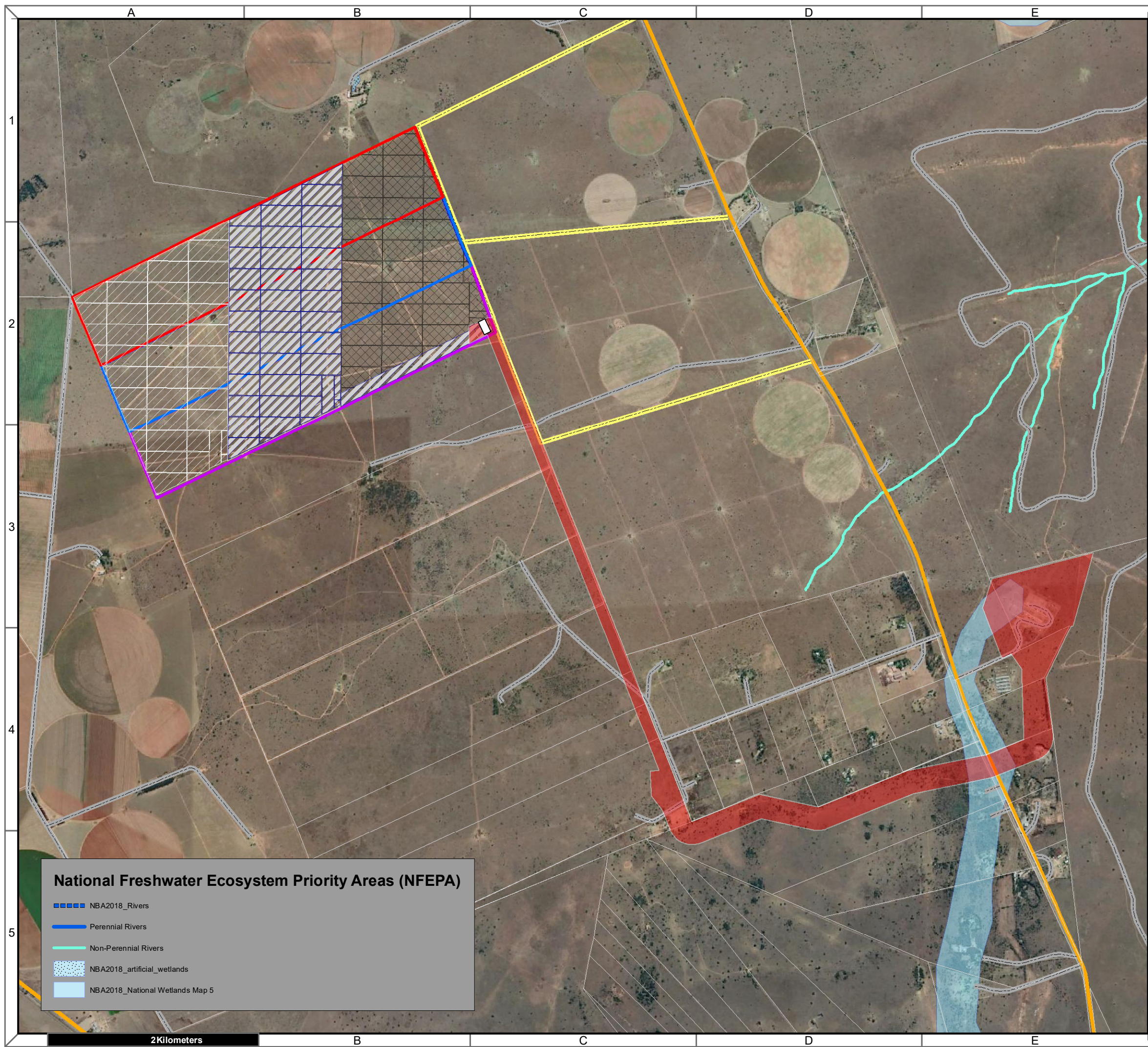
Cape Environmental Assessment Practitioners (Pty) Ltd
 Reg. No. 2008/004627/07
 Telephone: +27 44 874 0365
 Facsimile: +27 44 874 0432
 Web: www.cape-eaprac.co.za
 17 Progress St
 PO Box 2070
 George 6530

Critical Biodiversity Areas (CBA)

Aquatic CBA	Terrestrial CBA
CBA1	CBA1
CBA2	CBA2
ESA1	ESA1
ESA2	ESA2

CRITICAL BIODIVERSITY AREAS

2 Kilometers

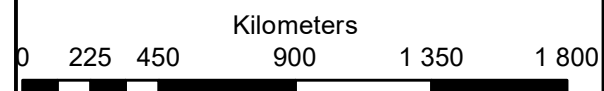


**Houthaalboomen North
Grid Corridor
Lichtenburg**

- Legend**
- Eskom Switching Station
 - Grid Corridor
 - Verbena PV
 - Hillardia PV
 - Portion_2_of_Farm_31
 - Portion_3_of_Farm_31
 - Portion_4_of_Farm_31
 - Euphorbia PV
 - Access Roads
 - MAIN ROAD
 - OTHER ACCESS

Notes

- Map Scale is 1: 40 000 when printed on A3
- Aerial image courtesy of Google Earth Pro 2022
- Imagery date May 2021
- Biodiversity data courtesy of SANBI BGIS 2020

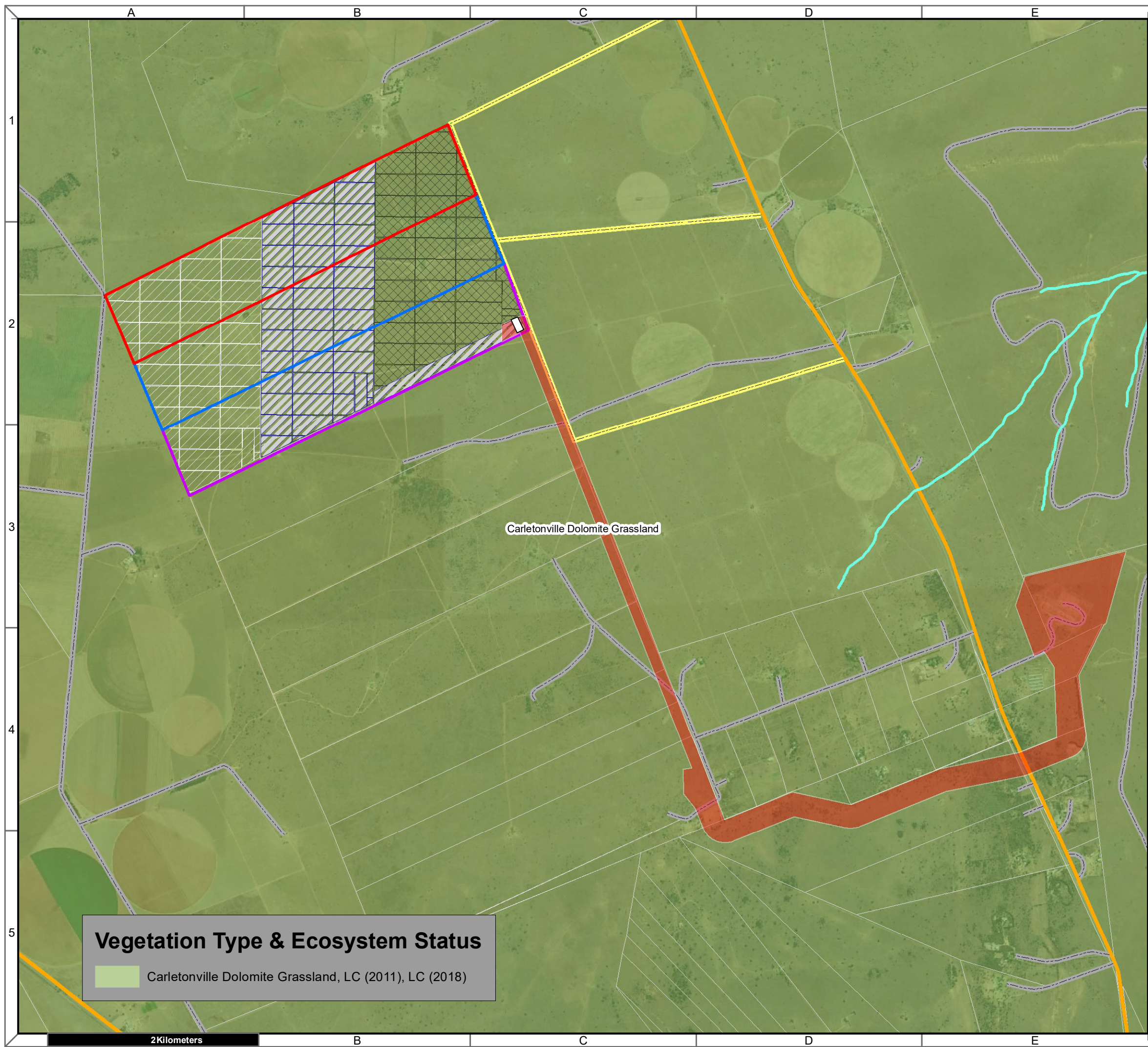


Map Drawn By:	Date	Reference
Melissa Mackay	2022/09/09	DIT724

- National Freshwater Ecosystem Priority Areas (NFEPA)**
- NBA2018_Rivers
 - Perennial Rivers
 - Non-Perennial Rivers
 - NBA2018_artificial_wetlands
 - NBA2018_National Wetlands Map 5

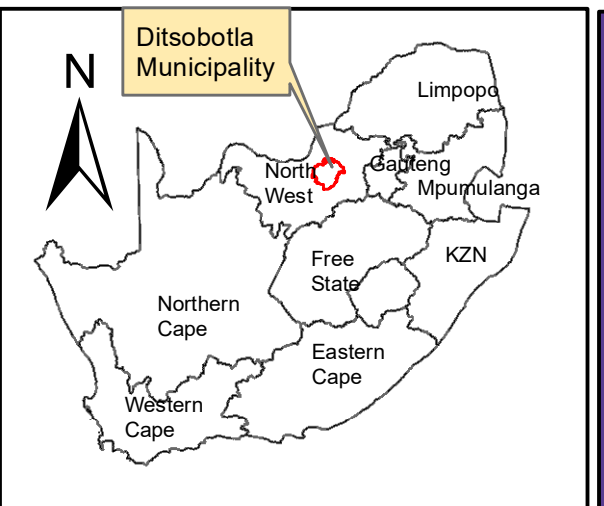
Cape Environmental Assessment Practitioners (Pty) Ltd
 Reg. No. 2008/004627/07
 Telephone: +27 44 874 0365
 Facsimile: +27 44 874 0432
 Web: www.cape-eaprac.co.za
 17 Progress St
 PO Box 2070
 George 6530

NATIONAL FRESHWATER ECOSYSTEM PRIORITY AREAS (NFEPA)



Vegetation Type & Ecosystem Status

Carletonville Dolomite Grassland, LC (2011), LC (2018)



**Houthaalboomen North
Grid Corridor
Lichtenburg**

- Legend**
- Eskom Switching Station
 - Grid Corridor
 - Portion 2 of Farm 31
 - Portion 3 of Farm 31
 - Portion 4 of Farm 31
 - Verbena PV
 - Hillardia PV
 - Euphorbia PV
 - Access Roads
 - Perennial Rivers
 - Non-Perennial Rivers
 - MAIN ROAD
 - OTHER ACCESS

Notes

- Map Scale is 1: 35 000 when printed on A3
- Aerial image courtesy of Google Earth Pro 2021
- Imagery date May 2021
- Biodiversity data courtesy of SANBI BGIS 2020
- 2018 Threat Status Assessment (Skowno, A et al August 2019)
- LC (Least Concern), VU (Vulnerable), EN (Endangered), CR (Critically Endangered)

Kilometers

0 225 450 900 1 350 1 800

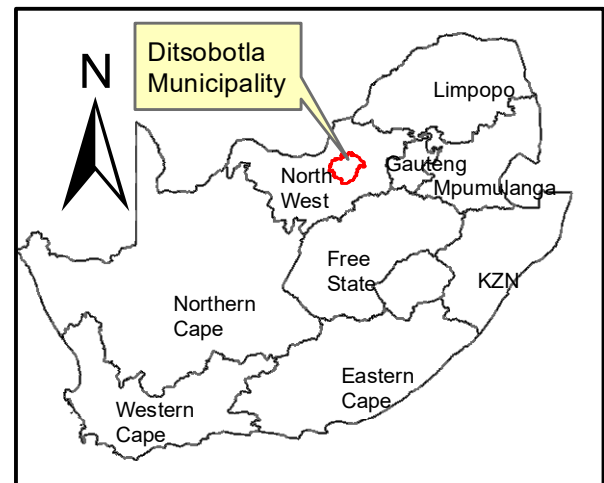
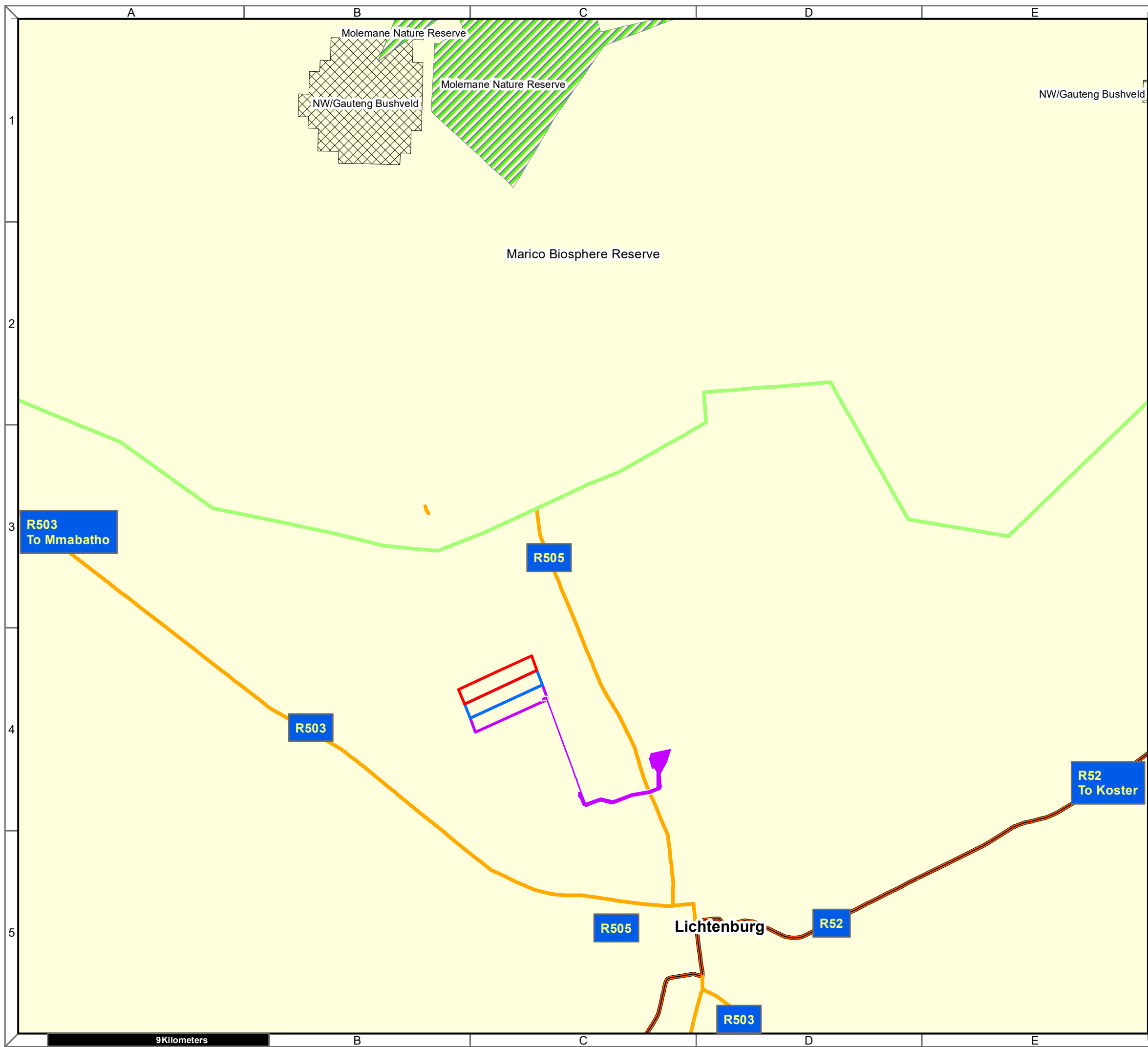
Map Drawn By:	Date	Reference
Melissa Mackay	2022/09/09	DIT724

Cape Environmental Assessment Practitioners (Pty) Ltd
 Reg. No. 2008/004627/07

Telephone: +27 44 874 0365
 Facsimile: +27 44 874 0432
 Web: www.cape-eaprac.co.za

17 Progress St
 PO Box 2070
 George 6530

VEGETATION TYPE & ECOSYSTEM STATUS



**Houthaalboomen North
Grid Corridor
Lichtenburg**

Legend

- Grid Corridor
- Portion_2_of_Farm_31
- Portion_3_of_Farm_31
- Portion_4_of_Farm_31
- Formal_Protected_Areas
- NPAES Focus Areas
- SACAD_OR_2021_Q1
- Perennial Rivers
- ARTERIAL ROUTE
- MAIN ROAD

Notes

- Map Scale is 1: 150 000 when printed on A3
- Aerial image courtesy of Google Earth Pro 2022
- Imagery date May 2021
- NPAES (2010) data courtesy of SANBI BGIS

Kilometers

Map Drawn By:	Date	Reference
Melissa Mackay	2022/09/09	DIT724

Cape Environmental Assessment Practitioners (Pty) Ltd
 Reg. No. 2008/004627/07

Telephone: +27 44 874 0365
 Facsimile: +27 44 874 0432
 Web: www.cape-eaprac.co.za

17 Progress St
 PO Box 2070
 George 6530

9 Kilometers