

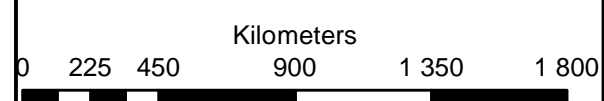
**Verbenia PV  
Houthaalboomen North  
Portions 2, 3 & 4 of Farm 31  
Lichtenburg**

**Legend**

- Portion\_2\_of\_Farm\_31
- Portion\_3\_of\_Farm\_31
- Portion\_4\_of\_Farm\_31
- Access Roads
- Verbenia PV
- 100m MV Corridor
- MAIN ROAD
- OTHER ACCESS
- Perennial Rivers
- Non-Perennial Rivers

**Notes**

- Map Scale is 1: 40 000 when printed on A3
- Aerial image courtesy of Google Earth Pro 2021
- Imagery date April 2021
- Biodiversity data courtesy of SANBI BGIS 2020
- North West CBA 2015 dataset



Map Drawn By:	Date	Reference
Melissa Mackay	2022/03/02	DIT724

**Cape Environmental Assessment Practitioners (Pty) Ltd**  
 Telephone: +27 44 874 0365  
 Facsimile: +27 44 874 0432  
 Web: www.cape-eaprac.co.za  
 17 Progress St  
 PO Box 2070  
 George 6530

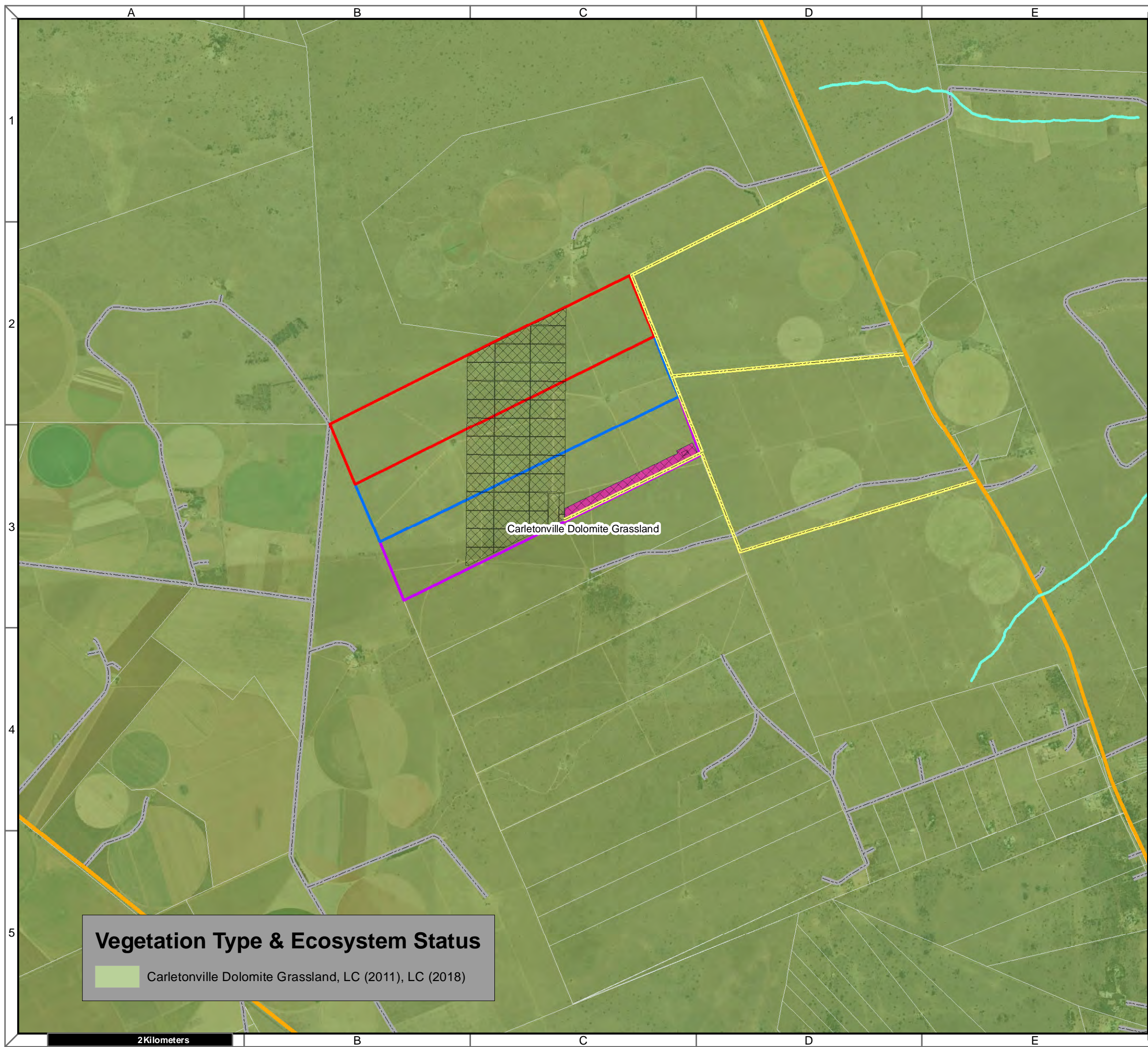
**Critical Biodiversity Areas (CBA)**

Aquatic CBA	Terrestrial CBA
<span style="background-color: #4682B4; width: 15px; height: 10px; display: inline-block;"></span> CBA1	<span style="background-color: #6AA84F; width: 15px; height: 10px; display: inline-block;"></span> CBA1
<span style="background-color: #00CED1; width: 15px; height: 10px; display: inline-block;"></span> CBA2	<span style="background-color: #9ACD32; width: 15px; height: 10px; display: inline-block;"></span> CBA2
<span style="background-color: #7FFFD4; width: 15px; height: 10px; display: inline-block;"></span> ESA1	<span style="background-color: #FFFF00; width: 15px; height: 10px; display: inline-block;"></span> ESA1
<span style="background-color: #DDA0DD; width: 15px; height: 10px; display: inline-block;"></span> ESA2	<span style="background-color: #4682B4; width: 15px; height: 10px; display: inline-block;"></span> ESA2

**CRITICAL BIODIVERSITY AREAS**

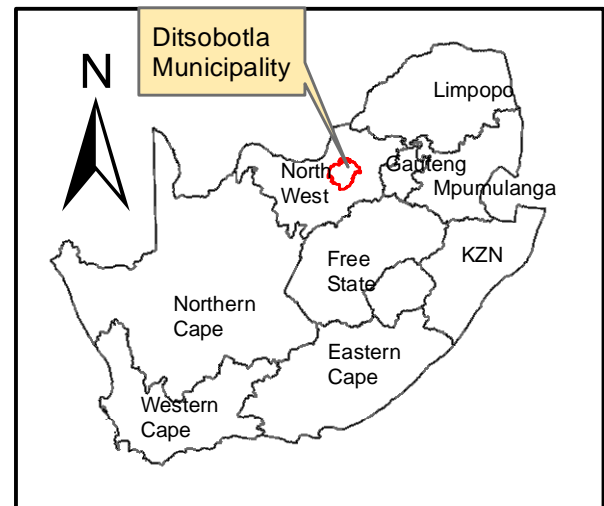
2Kilometers





**Vegetation Type & Ecosystem Status**

Carletonville Dolomite Grassland, LC (2011), LC (2018)



**Verbena PV  
Houthaalboomen North  
Portions 2, 3 & 4 of Farm 31  
Lichtenburg**

**Legend**

- Portion\_2\_of\_Farm\_31
- Portion\_3\_of\_Farm\_31
- Portion\_4\_of\_Farm\_31
- Perennial Rivers
- Non-Perennial Rivers
- MAIN ROAD
- OTHER ACCESS
- Access Roads
- Verbena PV
- 100m MV Corridor

**Notes**

- Map Scale is 1: 40 000 when printed on A3
- Aerial image courtesy of Google Earth Pro 2021
- Imagery date May 2021
- Biodiversity data courtesy of SANBI BGIS 2020
- 2018 Threat Status Assessment (Skowno, A et al August 2019)
- LC (Least Concern), VU (Vulnerable), EN (Endangered), CR (Critically Endangered)

Kilometers

0 225 450 900 1 350 1 800

Map Drawn By:	Date	Reference
Melissa Mackay	2022/03/02	DIT724

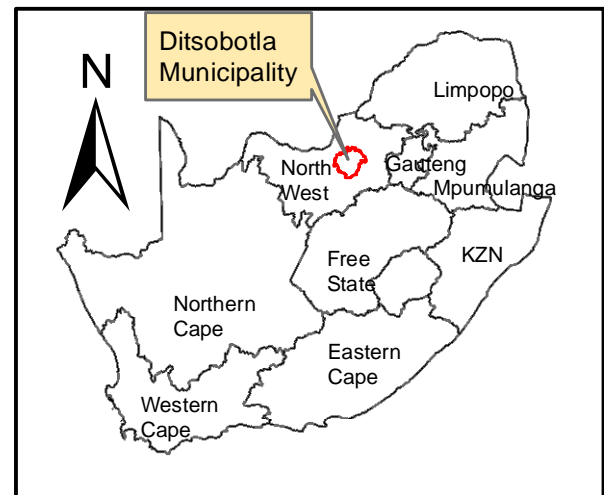
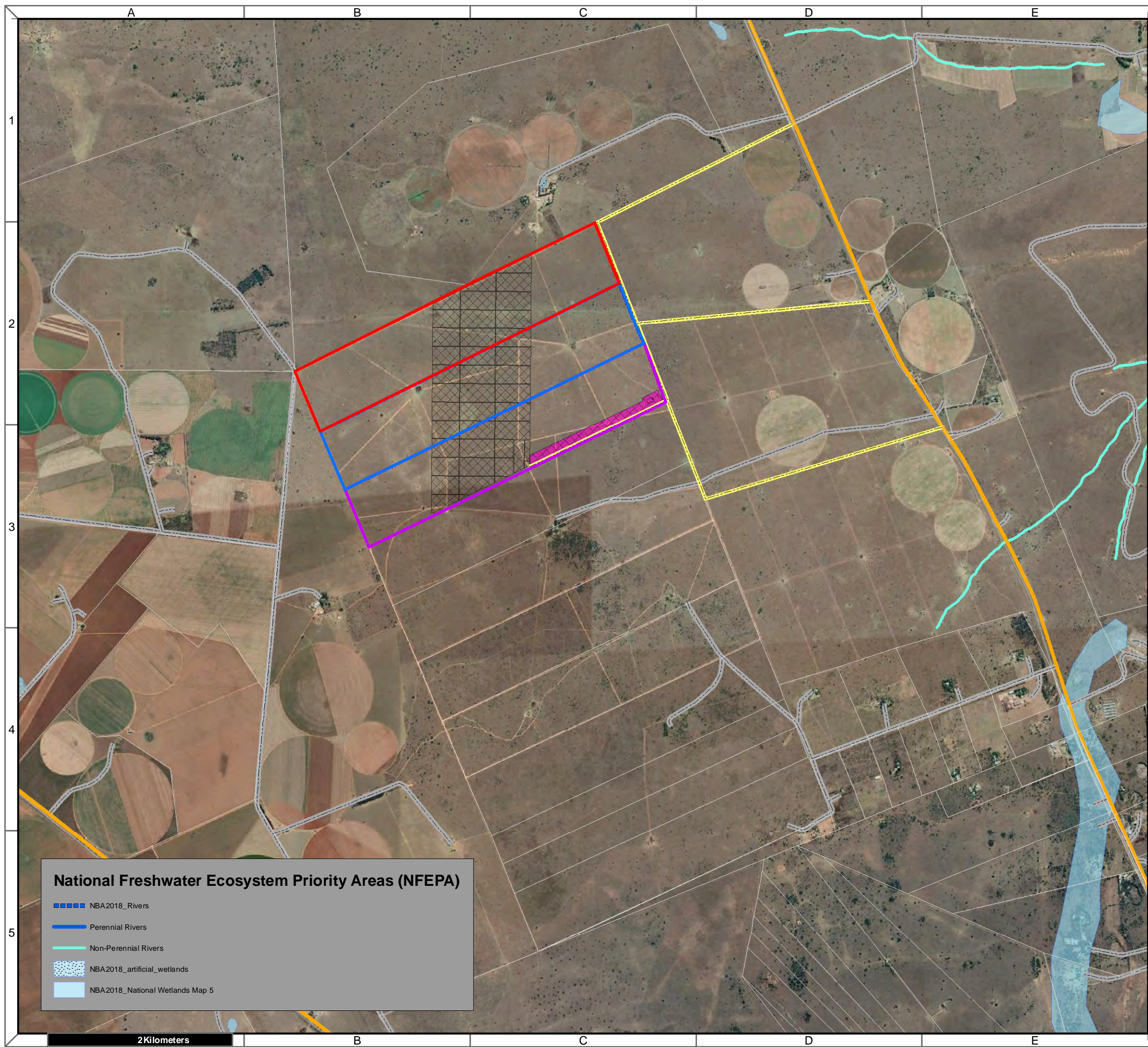
**Cape Environmental Assessment Practitioners (Pty) Ltd**  
 Reg. No. 2003/004637/07

Telephone: +27 44 874 0365  
 Facsimile: +27 44 874 0432  
 Web: www.cape-eaprac.co.za

17 Progress St  
 PO Box 2070  
 George 6530

**VEGETATION TYPE & ECOSYSTEM STATUS**





**Verbena PV  
Houthaalboomen North  
Portions 2, 3 & 4 of Farm 31  
Lichtenburg**

**Legend**

- Portion\_2\_of\_Farm\_31
- Portion\_3\_of\_Farm\_31
- Portion\_4\_of\_Farm\_31
- Access Roads
- Verbena PV
- 100m MV Corridor
- MAIN ROAD
- OTHER ACCESS

**Notes**

- Map Scale is 1: 40 000 when printed on A3
- Aerial image courtesy of Google Earth Pro 2022
- Imagery date May 2021
- Biodiversity data courtesy of SANBI BGIS 2020

Map Drawn By:	Date	Reference
Melissa Mackay	2022/03/02	DIT724

**Cape Environmental Assessment Practitioners (Pty) Ltd**  
 Telephone: +27 44 874 0365  
 Facsimile: +27 44 874 0432  
 Web: www.cape-eaprac.co.za  
 17 Progress St  
 PO Box 2070  
 George 6530