

PLEASE NOTE THAT THIS LIST PROVIDES FOR INDIGENOUS SPECIES AVAILABLE FROM YOUR LOCAL NURSERY AND SHOULD BE USED AS A GUIDELINE ONLY

Suggested Plant Species for Best Practice Landscaping

<p>ALBERTINIA SAND FYNBOS STATUS: VULNERABLE Tall Shrubs: Cassine peragua peragua Leucadendron eucalyptifolium Leucadendron galpinii Leucospermum praecox Nylandtia spinosa Protea repens Protea susannae Psoralea pinnata Low shrubs: Aulax umbellata Chironia baccifera Chrysocoma ciliata Diospyros dichrophylla Erica baueri baueri Erica discolor Erica sessiliflora Erica versicolor Leucadendron meridianum Passerina rigida Syncarpha paniculata Geophytic herbs: Bobartia robusta Bulbine frutescens Pteridium aquilinum Graminoids: Cynodon dactylon Elegia stipularis Thamnochortus insignis</p>	<p>Graminoids: Ficinia nodosa Juncus kraussii krausii Stenotaphrum secundatum Megagraminoids: Phragmites australis Typha capensis Herbs: Berula erecta thunbergii Falkia repens Geophytic herbs: Zantedeschia aethiopica</p> <p>GARDEN ROUTE GRANITE FYNBOS STATUS: ENDANGERED Tall shrubs: Protea coronata Protea lanceolata Protea neriifolia Low shrubs: Agathosma ovata Erica discolor var. speciosa Erica formosa Eriocephalus africanus Leucadendron salignum Mimetes cucullatus Pelargonium fruticosum Syncarpha paniculata Semi-parasitic shrubs: Osyris compressa Graminoids: Ficinia nigrescens</p>	<p>Succulent herbs: Crassula orbicularis Graminoids: Ischyrolepis sieberi</p> <p>GROOT BRAK DUNE STRANDVELD STATUS: ENDANGERED Small trees: Chionanthus foveolatus Clausena anisata Tall shrubs: Azima tetracantha Cussonia thyrsoiflora Diospyros dichrophylla Euclea racemosa Grewia occidentalis Gymnosporia buxiflora Maytenus procumbens Metalasia muricata Morella cordifolia Myrsine africana Mystroxydon aethiopicum Olea exasperata Pterocelastrus tricuspidatus Putterlickia pyracantha Rhus crenata Rhus glauca Rhus longispina Rhus lucida Schotia afra var. afra Sideroxydon inerme Tarchonanthes littoralis Low shrubs: Ballota africana Carissa bispinosa Chironia baccifera Clutia daphnoides Eriocephalus africanus var. africanus Helichrysum teretifolium Lauridia tetragona Phyllica axillaris Polygala myrtifolia Succulent shrubs: Aloe arborescens Cotyledon orbiculata var. dactyloopsis Crassula perforata Euphorbia burmannii Euphorbia mauritanica Tetragonia fruticosa Zygotyllum morgsana</p>	<p>Woody climber: Asparagus aethiopicus Cissampelos capensis Rhoicissus digitata Woody succulent climber: Sarcostemma viminalis Semi-parasitic shrubs: Osyris compressa Soft shrub: Hypoestes aristata Herbs: Commelina africana Geophytic herbs: Brunsvigia orientalis Chasmanthe aethiopica Freesia alba Succulent herbs: Crassula expansa expansa Senecio radicans Herbaceous climber: Cynanchum obtusifolium Kedrostis nana Herbaceous succulent climber: Pelargonium peltatum Graminoids: Cynodon dactylon Ficinia indica</p> <p>KNYSNA SAND FYNBOS STATUS: ENDANGERED Small tree: Widdringtonia nodiflora Tall shrubs: Leucadendron eucalyptifolium Metalasia densa Low shrubs: Anthospermum aethiopicum Berzelia intermedia Erica glandulosa fourcadei Erica sessiliflora Leucadendron salignum Lobelia coronopifolia Morella quercifolia Muraltia squarrosa Oedera imbricata Protea cynaroides Stoebe plumosa Tephrosia capensis Herbs: Geranium incanum</p>	<p>Graminoids: Cynodon dactylon Eragrostis capensis Ficinia bulbosa Thamnochortus cinereus</p> <p>MOSSEL BAY SHALE RENOSTERVELD STATUS: ENDANGERED Thicket clumps dominated by: Euclea undulata Putterlickia pyracantha Rhus lucida Succulent trees: Aloe ferox Aloe speciosa Tall shrubs: Diospyros dichrophylla Rhus glauca Low shrubs: Carissa bispinosa bispinosa Elytropappus rhinocerotis Eriocephalus africanus var. africanus Salvia muirii Succulent shrubs: Aloe arborescens Crassula perforata Succulent herbs: Carpobrotus acinaciformis Senecio crassulaefolius</p>	<p>SOUTHERN AFROTEMPERATE FOREST STATUS: LEAST THREATENED Scree and deep gorge: Cunonia capensis Metrosideros angustifolia Podocarpus elongatus Tall trees: Afrocarpus falcatus Brabejum stellatifolium Cunonia capensis Curtisia dentata Ilex mitis Nuxia floribunda Ochna arborea arborea Olea capensis macrocarpa Olinia ventosa Podocarpus elongatus Podocarpus latifolius Pterocelastrus tricuspidata Rapanea melanophloeos Small trees: Allophylus decipiens Brachylaena nerifolia Canthium inerme Cassine peragua Diospyros whyteana Gonioma kamassi Lachnostylis hirta Metrosideros angustifolia Virgilia divaricata Virgilia oroboides feruginea Virgilia oroboides oroboides Tall shrubs: Burchellia bubalina Sparrmannia africana Geophytic herbs: Blechnum capense Blechnum tabulare Clivia mirabilis Dietes iridioides Rumohra adiantiformis Tudea barbara Woody climber: Asparagus scandens Graminoids: Ischyrolepis subverticillata Megaherbs: Strelitzia alba</p>
<p>CANCA LIMESTONE FYNBOS STATUS: LEAST THREATENED Tall shrubs: Chrysanthemoides monilifera Protea lanceolata Protea obtusifolia Low shrubs: Acmadenia obtusata Diospyros dichrophylla Lobostemon belliformis Phyllica pubescens var. Orientalis Succulent shrubs: Delosperma virens Graminoids: Ficinia truncata</p> <p>CAPE LOWLAND FRESHWATER WETLAND STATUS: LEAST THREATENED Low shrubs: Senecio halimifolius Plecostachys serpyllifolia</p>	<p>GARDEN ROUTE SHALE FYNBOS STATUS: ENDANGERED Tall shrubs: Leucadendron eucalyptifolium Metalasia densa Protea aurea aurea Protea coronata Protea neriifolia Rhus lucida Low shrubs: Anthospermum aethiopicum Elytropappus rhinocerotis Helichrysum cymosum Leucadendron salignum Pelargonium cordifolium Phyllica axillaris Selago corymbosa Geophytic herbs: Pteridium aquilinum</p>			<p>NORTH OUTENIQUA SANDSTONE FYNBOS STATUS: LEAST THREATENED Small trees: Protea nitida Tall shrubs: Chrysanthemoides monilifera Leucadendron eucalyptifolium Protea neriifolia Low shrubs: Leucadendron salignum Phyllica axillaris Felicia filifolia filifolia Metalasia pulcherrima f. pallescens Graminoids: Rhodocoma fruticosa</p>	

SOUTHERN CAPE DUNE FYNBOS
STATUS: LEAST THREATENED

Thicket clumps:

- Pterocelastrus tricuspidatus
- Rhus lucida
- Sideroxylon inerme
- Tarchonanthus littoralis

Tall shrubs:

- Olea exasperata
- Rhus crenata
- Rhus glauca
- Rhus laevigata
- Rhus lucida

Low shrubs:

- Agathosma apiculata
- Agathosma ovata
- Anthospermum aethiopicum
- Chironia baccifera
- Felicia echinata
- Helichrysum teretifolium
- Leucadendron salignum
- Metalasia muricata
- Morella quercifolia
- Otholobium bracteolatum
- Passerina rigida
- Pelargonium betulinum
- Phyllaea ericoides
- Struthiola parviflora

Geophytic herbs:

- Cyrtanthus loddigesianus
- Cyrtanthus obliquus

Graminoids:

- Ficinia dunensis
- Thamnochortus cinereus

SOUTH OUTENIQUA SANDSTONE FYNBOS

STATUS: VULNERABLE

Small trees:

- Widdringtonia nodiflora

Tall shrubs:

- Chrysanthemoides monilifera
- Leucadendron conicum
- Leucadendron eucalyptifolium
- Leucadendron uliginosum uliginosum
- Metalasia densa
- Protea neriifolia
- Protea repens
- Dodonaea viscosa var. augustifolia
- Podalyria sericea
- Pterocelastrus tricuspidata

Low shrubs:

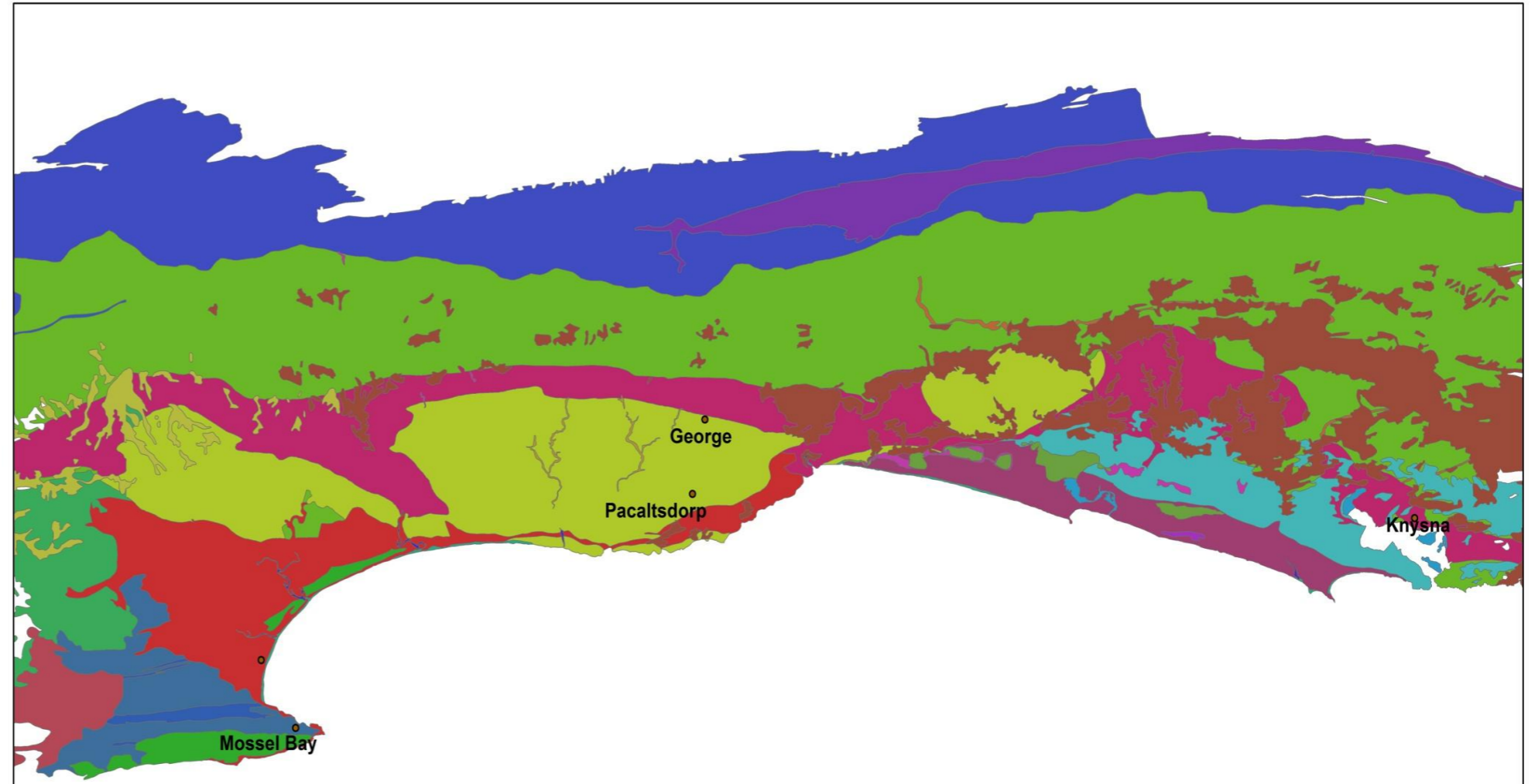
- Leucadendron comosum comosum
- Leucadendron salignum
- Leucadendron spissifolium fragrans

- Leucospermum cuneiforme
 - Berzelia intermedia
 - Brunia nodiflora
 - Acmaenia tetragona
 - Anisodontea scabrosa
 - Erica discolor
 - Erica formosa
 - Erica gracilis
 - Erica sparsa
 - Erica versicolor
 - Mimetes cucullatus
 - Protea cynaroides
 - Senecio glastifolius
 - Struthiola eckloniana
 - Syncarpha paniculata
- Geophytic herbs:**
- Pteridium aquilinum
 - Watsonia fourcadei
- Graminoids:**
- Ficinia gracilis



This list is by no means comprehensive, there are many other species that occur in these areas that can be used for rehabilitation and landscaping. Site specific identification of plant species is advisable to inform final planting lists.

Cape Environmental Assessment Practitioners (Pty) Ltd



Albertinia Sand Fynbos	Cape Seashore Vegetation	Groot Brak Dune Strandveld	South Outeniqua Sandstone Fynbos
Canca Limestone Fynbos	Central Coastal Shale Band Vegetation	Knysna Sand Fynbos	Southern Afrotemperate Forest
Cape Coastal Lagoons	Eastern Coastal Shale Band Vegetation	Langkloof Shale Renosterveld	Southern Cape Dune Fynbos
Cape Estuarine Salt Marshes	Freshwater Lakes	Mossel Bay Shale Renosterveld	Southern Coastal Forest
Cape Lowland Alluvial Vegetation	Garden Route Granite Fynbos	North Langeberg Sandstone Fynbos	Swellendam Silcrete Fynbos
Cape Lowland Freshwater Wetlands	Garden Route Shale Fynbos	North Outeniqua Sandstone Fynbos	

Data Source: Strelitzia 19: Vegetation Map of South Africa, Lesotho and Swaziland (2006)

