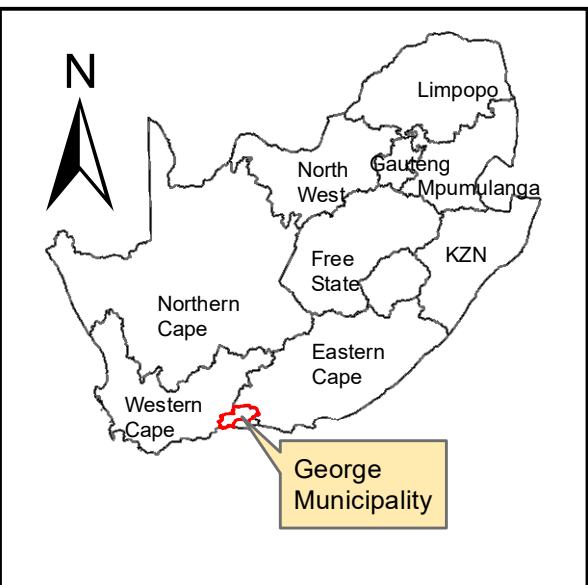




Vegetation Type & Ecosystem Status

Garden Route Granite Fynbos, EN (2011), CR (2018)



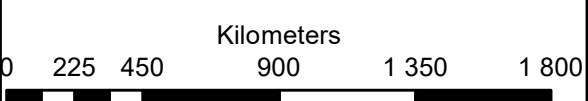
George Aerotropolis
Portion of Portion 130, 131 & Portion 132 of Farm 208 Gwayang

Legend

- Portion_130_of_208
- Portion_132_of_208
- Portion_131_of_208
- Perennial Rivers
- Non-Perennial Rivers




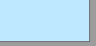
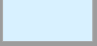




Notes

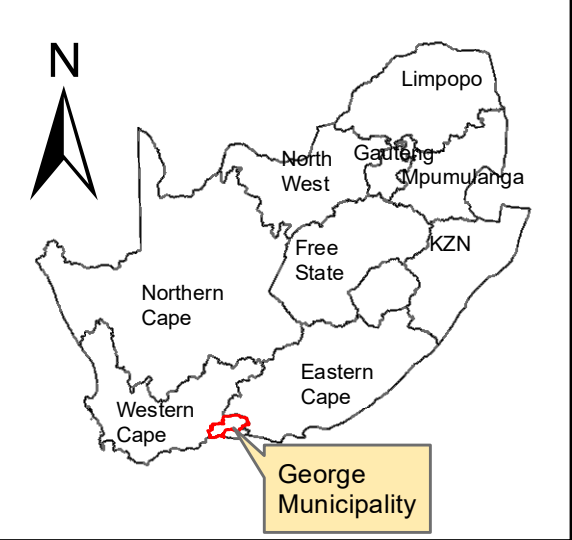
- Map Scale is 1: 5 000 when printed on A3
- Aerial image courtesy of Google Earth Pro 2020
- Imagery date March 2020
- Biodiversity data courtesy of SANBI BGIS 2020 & WCBSP 2017
- 2018 Threat Status Assessment (Skowno, A et al August 2019)
- LC (Least Concern), VU (Vulnerable), EN (Endangered), CR (Critically Endangered)



Map Drawn By:	Date	Reference
Melissa Mackay	2021/06/10	GEO656




Critical Biodiversity Areas (CBA)

 BSP_PA_George	CBA 1	CBA 2	ESA 1	ESA 2			
	CBA: Aquatic		CBA2: Aquatic		ESA: Aquatic		ESA2: Restore from other land use
	CBA: Terrestrial		CBA2: Terrestrial		ESA: Terrestrial		ESA2: Restore from plantation or high density IAP



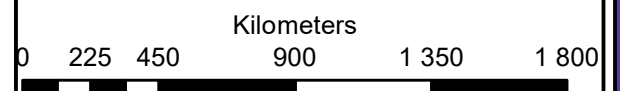
George Aerotropolis Portion of Portion 130 & Portion 131 of Farm 208 Gwayang

Legend

	Portion_132_of_208
	Portion_131_of_208
	Portion_130_of_208

Notes

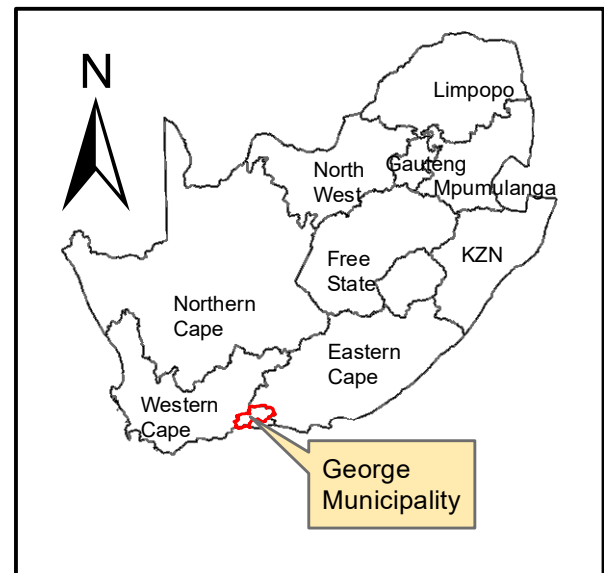
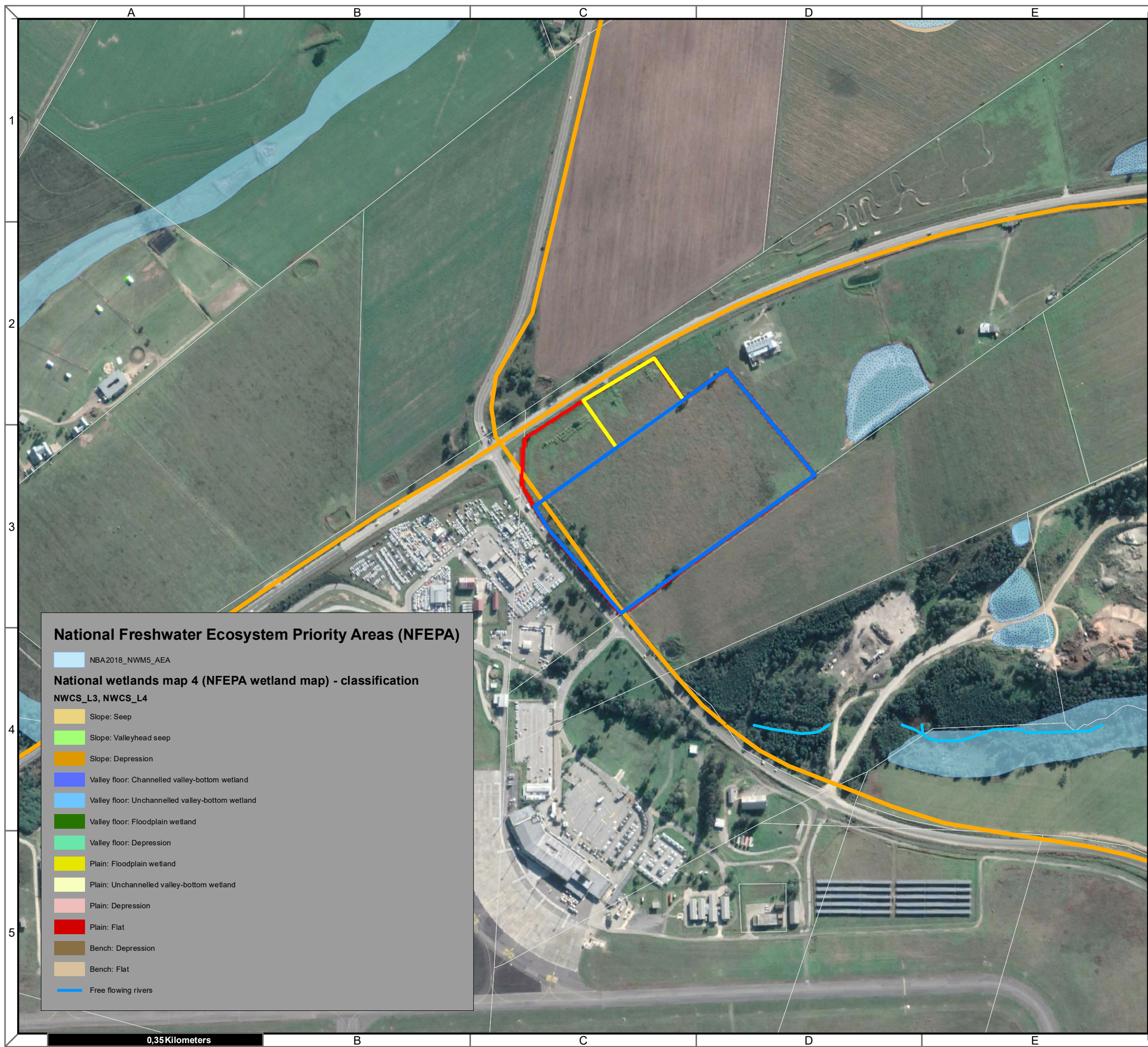
- Map Scale is 1: 6 000 when printed on A3
- Aerial image courtesy of Google Earth Pro 2020
- Imagery date June 2020
- Biodiversity data courtesy of SANBI BGIS 2020 & WCBSP 2017



Map Drawn By:	Date	Reference
Melissa Mackay	2021/07/08	MOS626

 Cape Environmental Assessment Practitioners (Pty) Ltd
 Reg. No. 2008/004627/07
 Telephone: +27 44 874 0365
 Facsimile: +27 44 874 0432
 Web: www.cape-eaprac.co.za
 17 Progress St
 PO Box 2070
 George 6530

CRITICAL BIODIVERSITY AREAS



**George Aerotropolis
Portion of Portion 130, 131 &
Portion 132 of Farm 208 Gwayang**

Legend

- Portion_130_of_208
- Portion_132_of_208
- Portion_131_of_208
- ARTERIAL ROUTE
- NATIONAL FREEWAY
- NATIONAL ROUTE
- MAIN ROAD
- SECONDARY ROAD

National Freshwater Ecosystem Priority Areas (NFEPA)

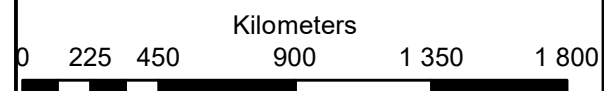
NBA2018_NWM5_AEA

National wetlands map 4 (NFEPA wetland map) - classification
NWCS_L3, NWCS_L4

- Slope: Seep
- Slope: Valleyhead seep
- Slope: Depression
- Valley floor: Channelled valley-bottom wetland
- Valley floor: Unchannelled valley-bottom wetland
- Valley floor: Floodplain wetland
- Valley floor: Depression
- Plain: Floodplain wetland
- Plain: Unchannelled valley-bottom wetland
- Plain: Depression
- Plain: Flat
- Bench: Depression
- Bench: Flat
- Free flowing rivers

Notes

- Map Scale is 1: 6 000 when printed on A3
- Aerial image courtesy of Google Earth Pro 2021
- Imagery date January 2019
- Biodiversity data courtesy of SANBI BGIS 2020 and the WCBSP 2017



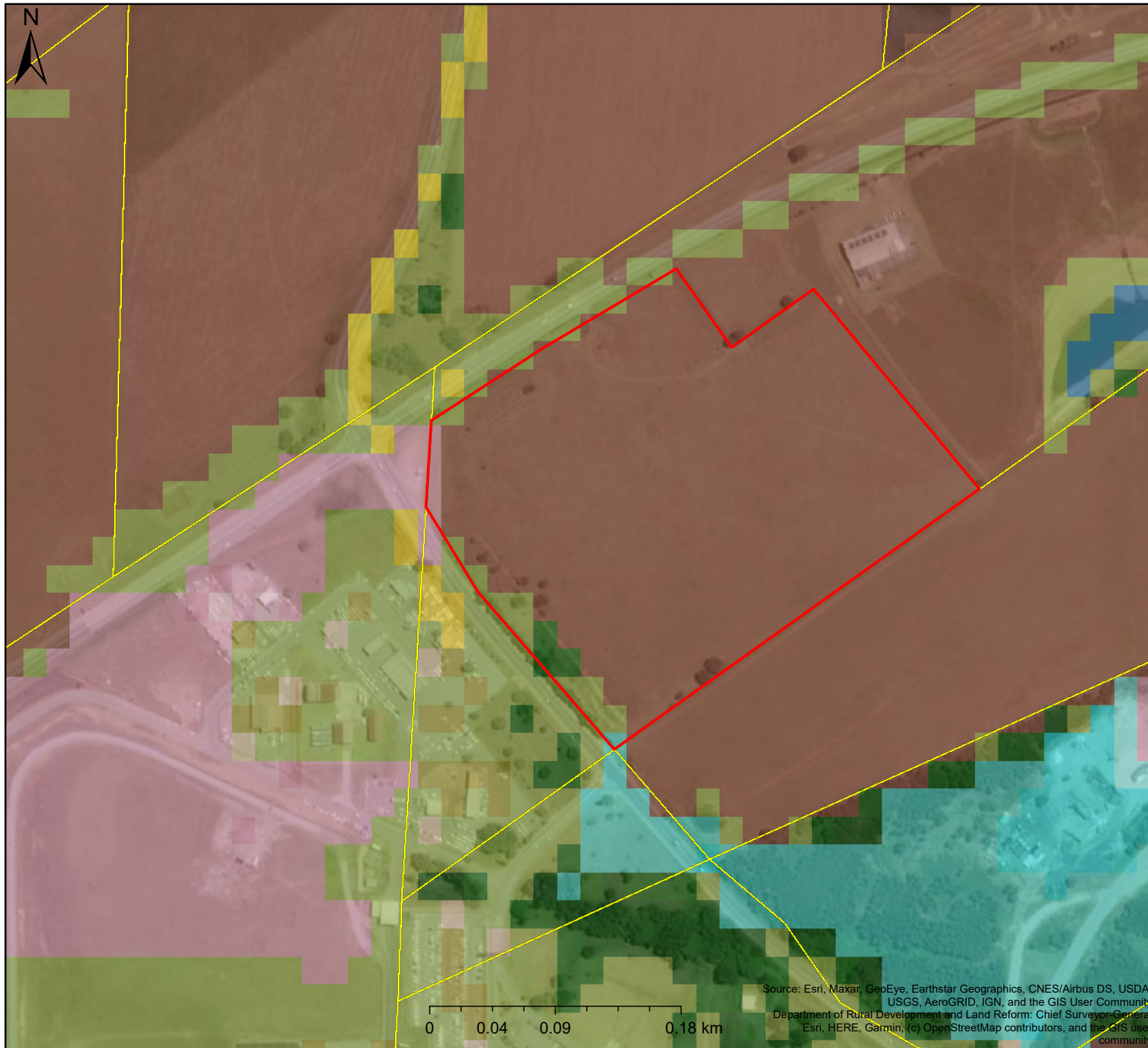
Map Drawn By:	Date	Reference
Melissa Mackay	2021/06/10	GEO601

Cape Environmental Assessment Practitioners (Pty) Ltd
Reg. No. 2008/004627/07

Telephone: +27 44 874 0365
Facsimile: +27 44 874 0432
Web: www.cape-eaprac.co.za

17 Progress St
PO Box 2070
George 6530

George Aerotropolis



Legend

Farm Portions	low shrubland (nama karoo)
artificial dams (including canals)	low shrubland (other)
artificial flooded mine pits	low shrubland (succulent karoo)
artificial sewage ponds	mangrove wetlands
bare riverbed material	mine: tailings and resource dumps
coastal sand & dunes	mines: extraction pits, quarries
commercial	mines: salt mines
commercial annual crops non-pivot irrigated	mines: surface infrastructure
commercial annual crops pivot irrigated	natural estuaries & lagoons
commercial annual crops rain-fed / dryland	natural grassland
contiguous & dense plantation forest	natural lakes
contiguous (indigenous) forest	natural ocean & coastal
contiguous low forest & thicket	natural pans (flooded @ observation times)
cultivated commercial permanent orchards	natural rivers
cultivated commercial permanent pineapples	natural rock surfaces
cultivated commercial permanent vines	open & sparse plantation forest
cultivated commercial sugarcane non-pivot	open woodland
cultivated commercial sugarcane pivot irrigated	other bare
cultivated emerging farmer sugarcane non-pivot	residential formal (bare)
dense forest & woodland	residential formal (bush)
dry pans	residential formal (low veg / grass)
eroded lands	residential formal (tree)
fallow land & old fields (bare)	residential informal (bare)
fallow land & old fields (bush)	residential informal (bush)
fallow land & old fields (grass)	residential informal (low veg / grass)
fallow land & old fields (low shrub)	residential informal (tree)
fallow land & old fields (trees)	roads & rails (major linear)
fallow land & old fields (wetlands)	sand dunes (terrestrial)
herbaceous wetlands (currently mapped)	smallholdings (bare)
herbaceous wetlands (previously mapped)	smallholdings (bush)
industrial	smallholdings (low veg / grass)
land-fills	smallholdings (tree)
low shrubland (fynbos)	sparsely wooded grassland
	subsistence / small-scale annual crops
	temporary unplanted (clear-felled) plantation forest

Scale: 1:4 514

Date created: June 10, 2021

Compiled with CapeFarmMapper



**Western Cape
Government**

Agriculture

Source: Esri, Maxar, GeoEye, Earthstar Geographics, CNES/Airbus DS, USDA, USGS, AeroGRID, IGN, and the GIS User Community
Department of Rural Development and Land Reform: Chief Surveyor-General
Esri, HERE, Garmin, (c) OpenStreetMap contributors, and the GIS user community

George Aerotropolis



Legend

Aspect

- Flat (-1)
- North (0-22.5)
- Northeast (22.5-67.5)
- East (67.5-112.5)
- Southeast (112.5-157.5)
- South (157.5-202.5)
- Southwest (202.5-247.5)
- West (247.5-292.5)
- Northwest (292.5-337.5)
- North (337.5-360)

Scale: 1:2 257

Date created: July 8, 2021

Compiled with CapeFarmMapper

Source: Esri, Maxar, GeoEye, Earthstar Geographics, CNES/Airbus DS, USDA, USGS, AeroGRID, IGN, and the GIS User Community
Stellenbosch University, WCDOA
Esri, HERE, Garmin, (c) OpenStreetMap contributors, and the GIS user community



**Western Cape
Government**

Agriculture



George Aerotropolis

Legend		
Yellow outline	Farm Portions	Red B horizons
Landtypes		Red and yellow dystrophic and/or mesotrophic
Grey	Undefined	Red and yellow, high base status, usually < 15% clay
Light blue	B horizons not red	Red, dystrophic and/or mesotrophic
Purple	Dystrophic and/or mesotrophic; red soils not widespread	Red, high base status < 300 mm deep
Pink	Dystrophic and/or mesotrophic; red soils widespread	Red, high base status > 300 mm deep (no dunes)
Orange	Eutrophic; red soils not widespread	Red, high base status > 300 mm deep (with dunes)
Light orange	Eutrophic; red soils widespread	Regic sands and other soils
Yellow	In addition, one or more of: vertic, melanic, red structured diagnostic horizons	Regic sands dominant
Light green	Lime generally present in the entire landscape	Rock areas with miscellaneous soils
Light yellow-green	Lime rare or absent in the entire landscape	Rock with little or no soil
Light brown	Lime rare or absent in upland soils but generally present in low-lying soils	Undifferentiated
Dark brown	Predominantly deep (Lamotte form)	Undifferentiated deep deposits
Yellow-green	Predominantly shallow (Houwhoek form)	Yellow, dystrophic and/or mesotrophic
		Yellow, high base status, usually < 15% clay

Scale: 1:4 514

Date created: August 3, 2020

Compiled with CapeFarmMapper



Western Cape Government

Agriculture

Source: Esri, Maxar, GeoEye, Earthstar Geographics, CNES/Airbus DS, USDA, USGS, AeroGRID, IGN, and the GIS User Community
 Department of Rural Development and Land Reform: Chief Surveyor-General
 Esri, HERE, Garmin, (c) OpenStreetMap contributors, and the GIS user community

