
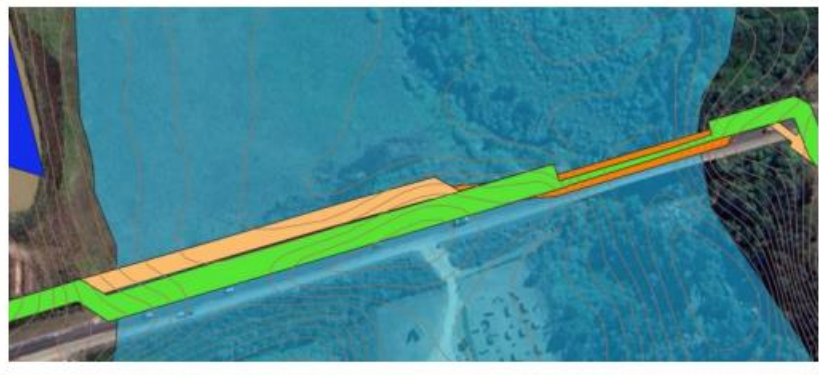
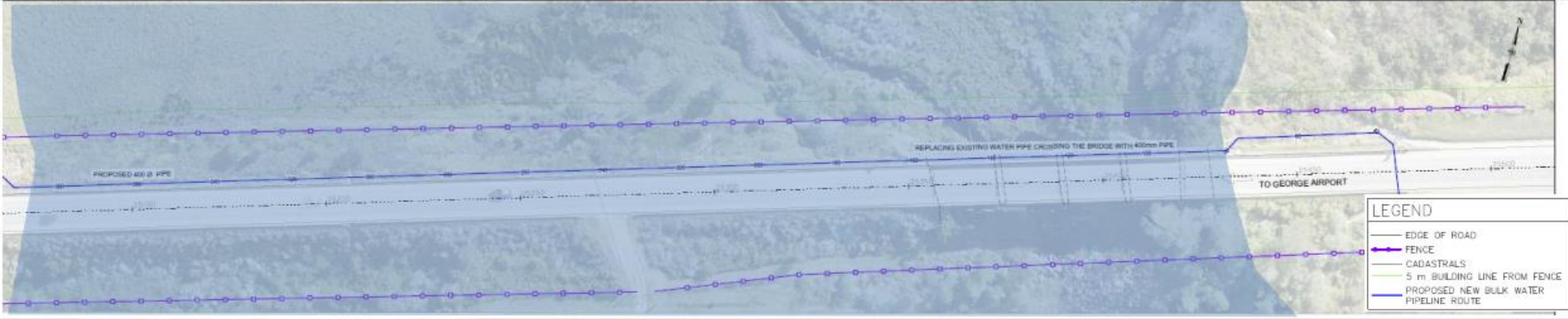

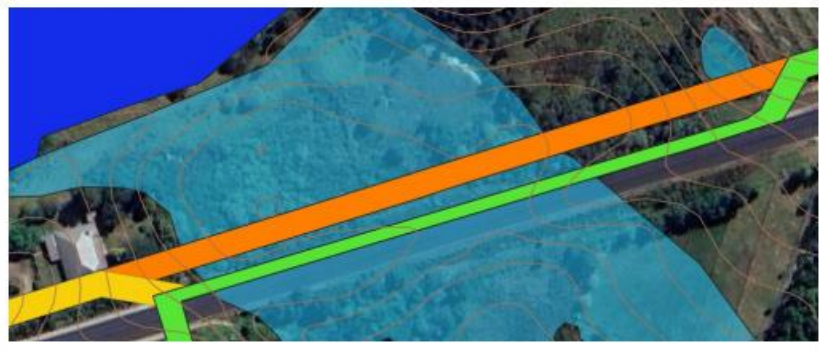
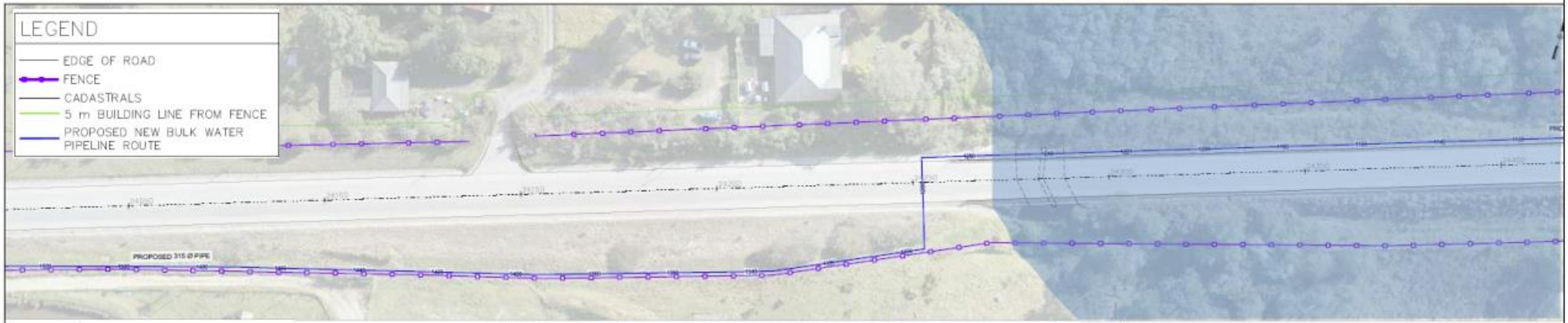


SENSITIVE WATERCOURSE CROSSINGS BY THE WATER PIPELINE TO BE UPGRADED (SOURCE: CONFLUENT)

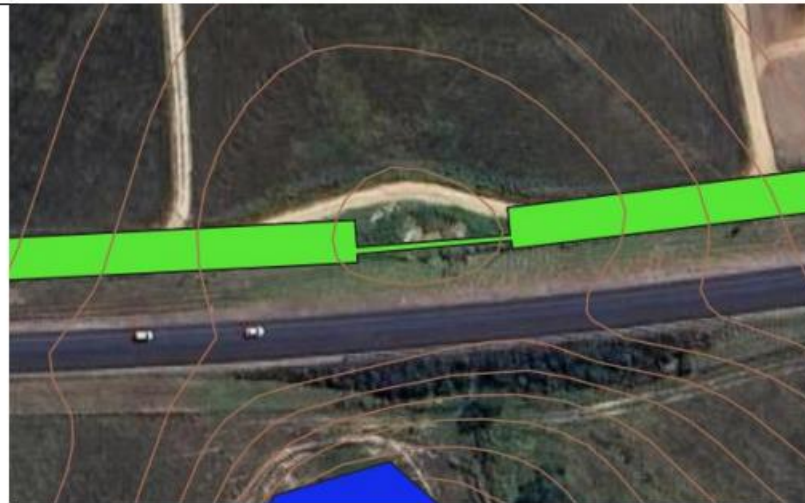
Label	Photo	Aerial layout	Notes
A			<p>Gwaing River Channelled Valley Bottom Wetland and associated enhanced wetland due to stormwater runoff to the west. Existing pipeline route above river on bridge and above wetland along road embankment.</p>
			
B			<p>Norga River Channelled Valley Bottom Wetland dammed upstream of the road. Major interception of flow by dam. Channelled spillway from dam leads to culvert under road. The preferred option crossing would be mounting the pipeline on top of the existing culvert (see arrow).</p>

LEGEND

- EDGE OF ROAD
- FENCE
- CADASTRALS
- 5 m BUILDING LINE FROM FENCE
- PROPOSED NEW BULK WATER PIPELINE ROUTE



C



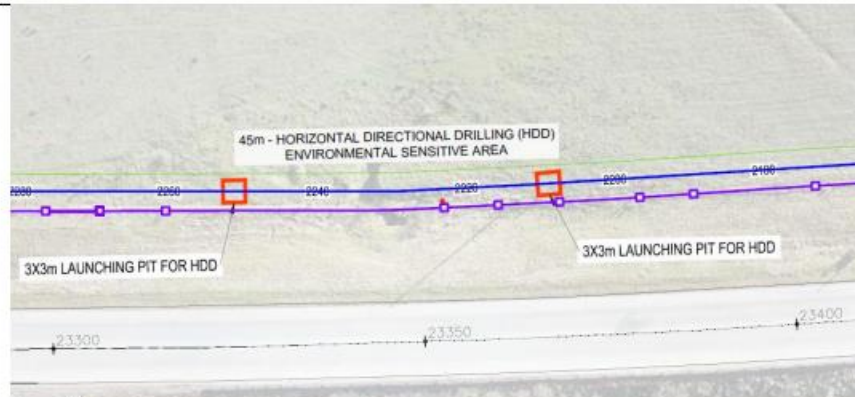
Possible Wetland

Historic temporary seep significantly disturbed due to intensive grazing road construction and subsequent erosion and slumping of soil.

Pipeline installed using Horizontal Directional Drilling at this point. This represents a precautionary approach.

LEGEND

- EDGE OF ROAD
- FENCE
- CADASTRALS
- 5 m BUILDING LINE FROM FENCE
- PROPOSED NEW BULK WATER PIPELINE ROUTE



D



Dam

Probably old seep which was excavated for a dam. New pipeline route through highly disturbed vegetation impacted by existing road, dam embankment and alien vegetation. Pipeline installed using Horizontal Directional Drilling at this point.

