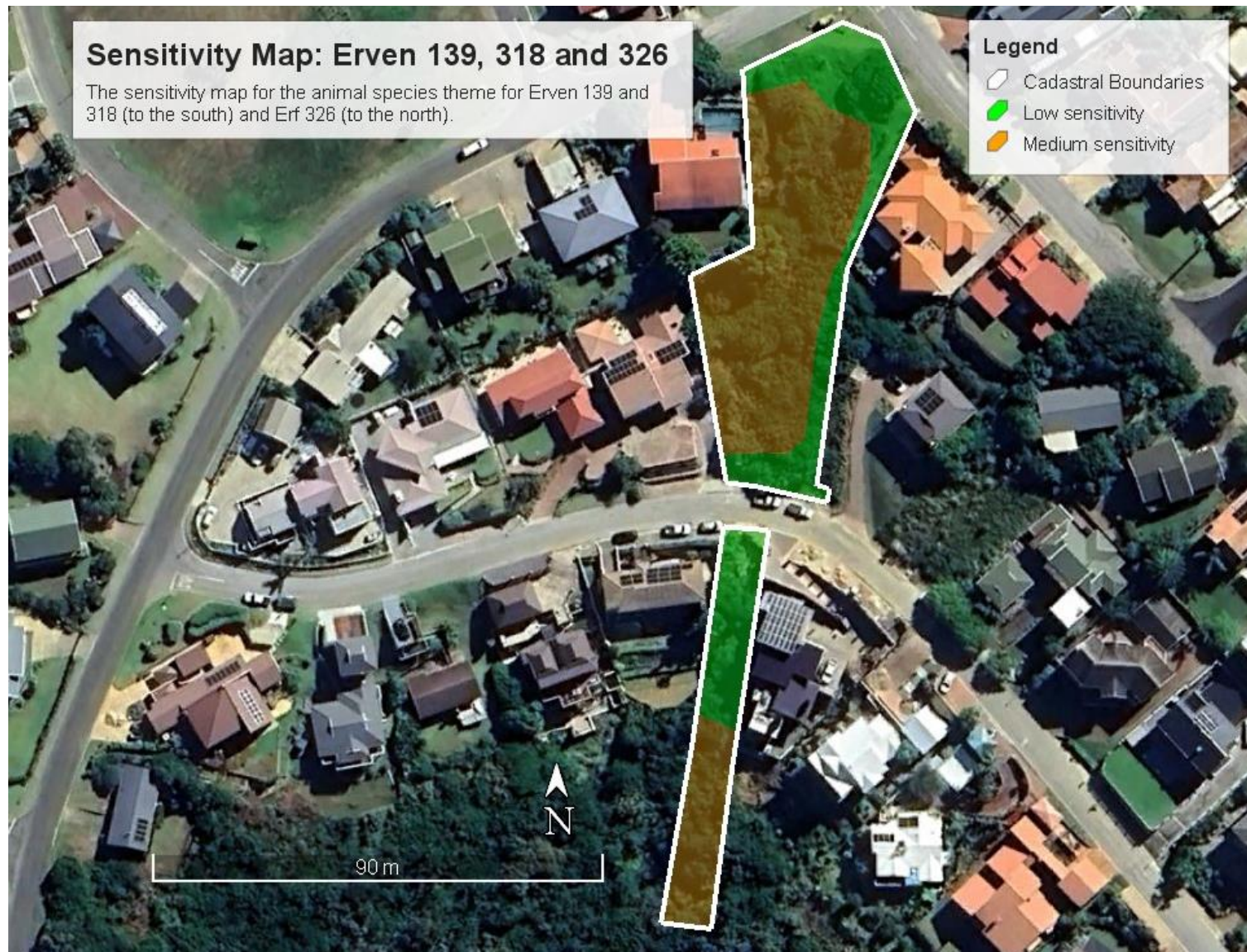


APPENDIX 1: SENSITIVITY MAP OF ERVEN 139, 318 AND 326, HEROLD'S BAY



Botanical Sensitivity Map Compiled by Bianke Fouche

According to Bianke, one SCC (*Erica glandulos fourcadei*) are located within the development footprint of the proposed gabion basket wall just south of Erf 326 (red polygon).

Bianke recommended to transplant these *Ericas* within an area outside the project area. The yellow pin locations are potentially acceptable transplant locations for *Erica glandulosa fourcadei* on Erf 326.



Aquatic Map showing the proximity of watercourses to the proposed development footprint.

