

CBA and ESA Map



Legend

- BSP CBA**
- CBA: Terrestrial
 - CBA: River
 - CBA: Wetland

Map Center: Lon: 22°25'48.8"E
Lat: 33°59'35.7"S

Scale: 1:18,056

Date created: 2024/13/09



Source: Esri, Maxar, Earthstar Geographics, and the GIS User Community
Sources: Esri, TomTom, Garmin, FAO, NOAA, USGS, © OpenStreetMap contributors, and the GIS User Community

Aquatic Map



Legend

Rivers (DWS)

CLASS

- Perennial
- - - NonPerennial

Rivers

- Perennial
- - - Non-Perennial

Wetlands (NFEPA)

- Artificial
- Natural

Wetlands (NWM5)

Classification

- Channelled valley-bottom wetland
- Depression wetland
- Seep wetland
- Unchannelled valley-bottom wetland

Map Center: Lon: 22°25'48.8"E
 Lat: 33°59'35.7"S

Scale: 1:18,056

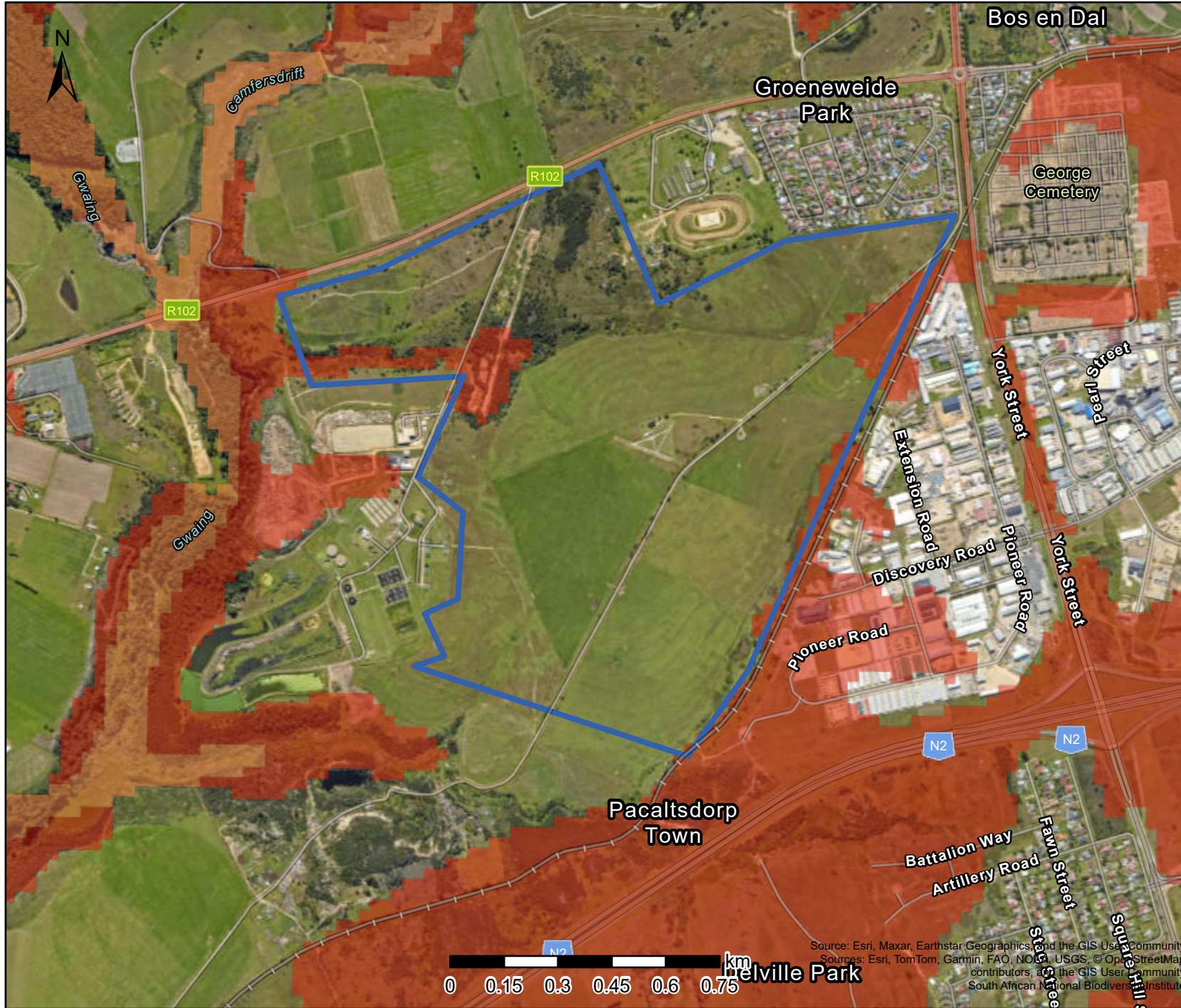
Date created: 2024/13/09



**Western Cape
 Government**
 FOR YOU



Chief Directorate: National Geospatial Information (DALRRD)
 Source: Esri, Maxar, Earthstar Geographics, and the GIS User Community
 Contributors: Esri, TomTom, Garmin, FAO, NOAA, USGS, © OpenStreetMap contributors, and the GIS User Community

Ecosystem Threat Status Map



Legend

Red List of Ecosystems Remnants Category

-  Critically Endangered
-  Endangered

Map Center: Lon: 22°25'48.8"E
Lat: 33°59'35.7"S

Scale: 1:18,056

Date created: 2024/13/09



Western Cape
Government
FOR YOU

Source: Esri, Maxar, Earthstar Geographics, and the GIS User Community
Sources: Esri, TomTom, Garmin, FAO, NOAA, USGS, © OpenStreetMap contributors, and the GIS User Community
South African National Biodiversity Institute