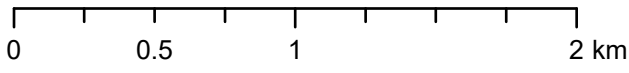
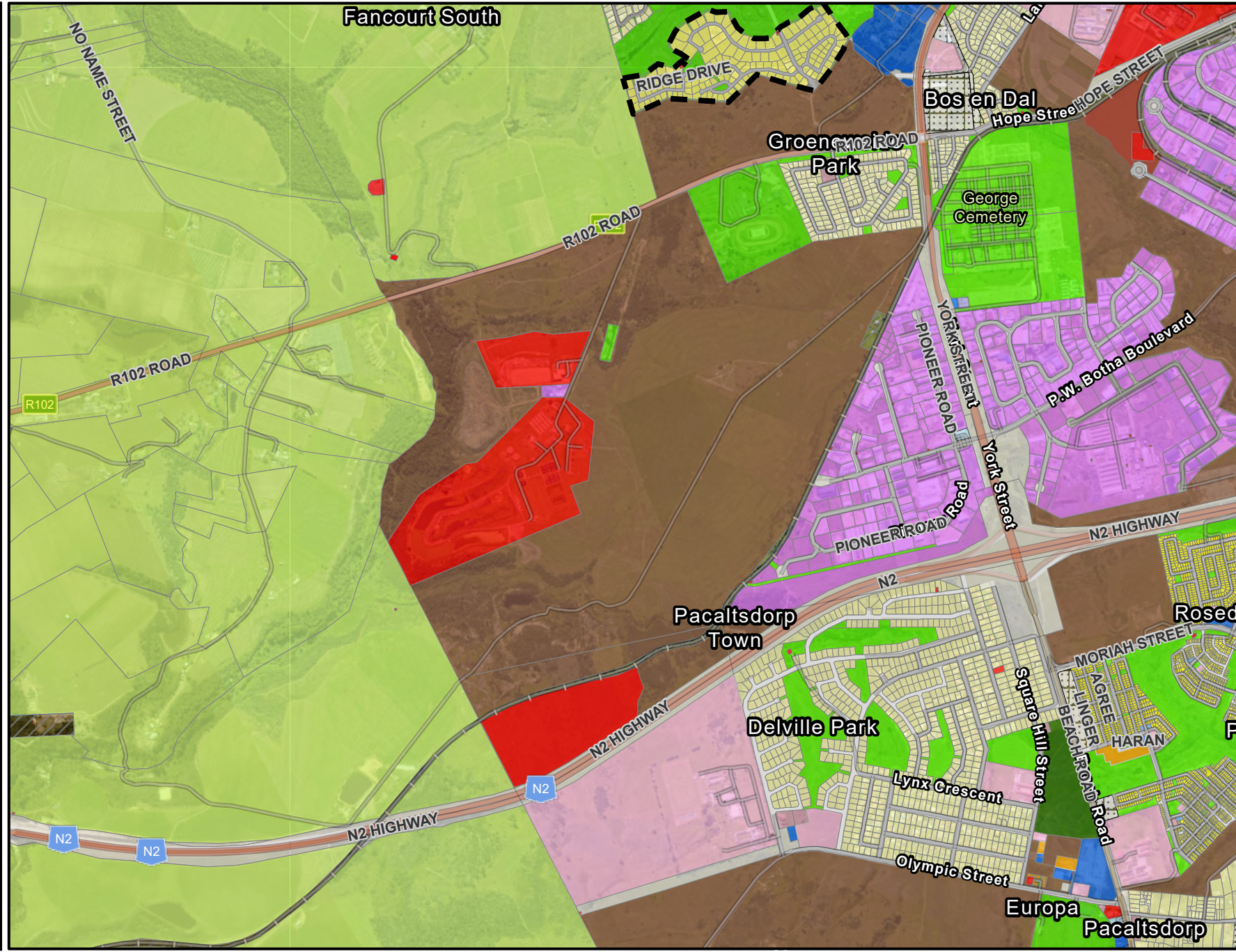


# Gwayang Mixed-Use Development Zoning Map

## Legend

### Integrated Zoning Scheme (GIZSB)

- Estate Housing
- Non conforming use
- Agricultural Zone I
- Agricultural Zone II
- Agriculture Zone III
- Business Zone I
- Business Zone II
- Business Zone III
- Business Zone IV
- Business Zone V
- Business Zone VI
- Community Zone I
- Community Zone II
- Community Zone III
- General Residential Zone I
- General Residential Zone II
- General Residential Zone III
- General Residential Zone IV
- General Residential Zone V
- General Residential Zone VI
- Industrial Zone I
- Industrial Zone II
- Industrial Zone III
- Industrial Zone IV
- Open Space Zone I
- Open Space Zone II
- Open Space Zone III
- Open Space Zone IV
- Resort Zone
- Single Residential Zone I
- Single Residential Zone II
- Single Residential Zone III
- Special Planning Area Overlay Zone
- Subdivisional Area Overlay Zone
- Transport Usage Zone II
- Transport Zone I
- Transport Zone II
- Transport Zone III
- Undetermined Use Zone
- Utility Zone
- Streets



Date: 3/5/2024 1:22 PM

Scale: 1:26,881



Disclaimer  
George Municipality makes no warranties as to the correctness of the information supplied. Persons relying on this information do so entirely at their own risk.  
  
George Municipality will not be liable for any claims whatsoever, whether for damages or otherwise, which may arise as a result of inaccuracies in the information supplied.