

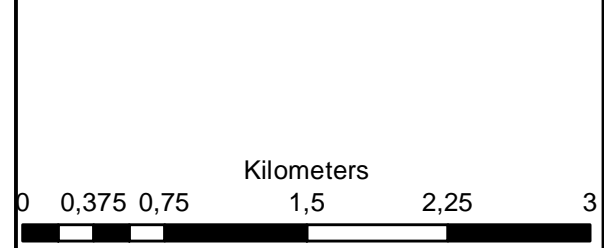
**Hotazel Solar  
Remainder Farm York A 279**

**Legend**

- RE\_279
- RE\_280
- Portion 11 of 279
- Alternative 1
- Alternative 2

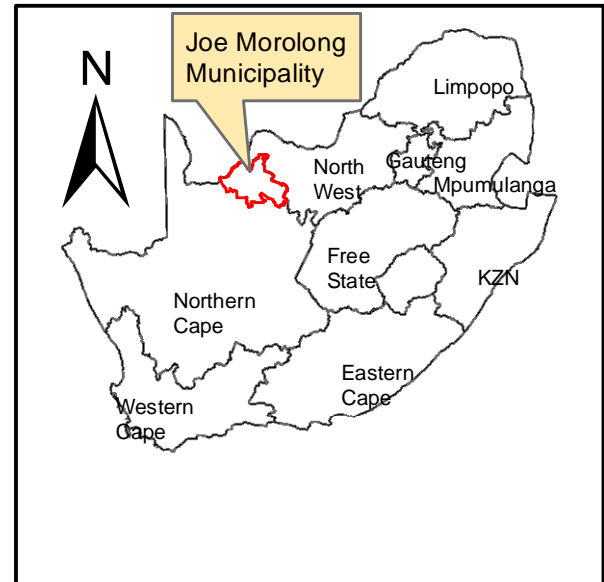
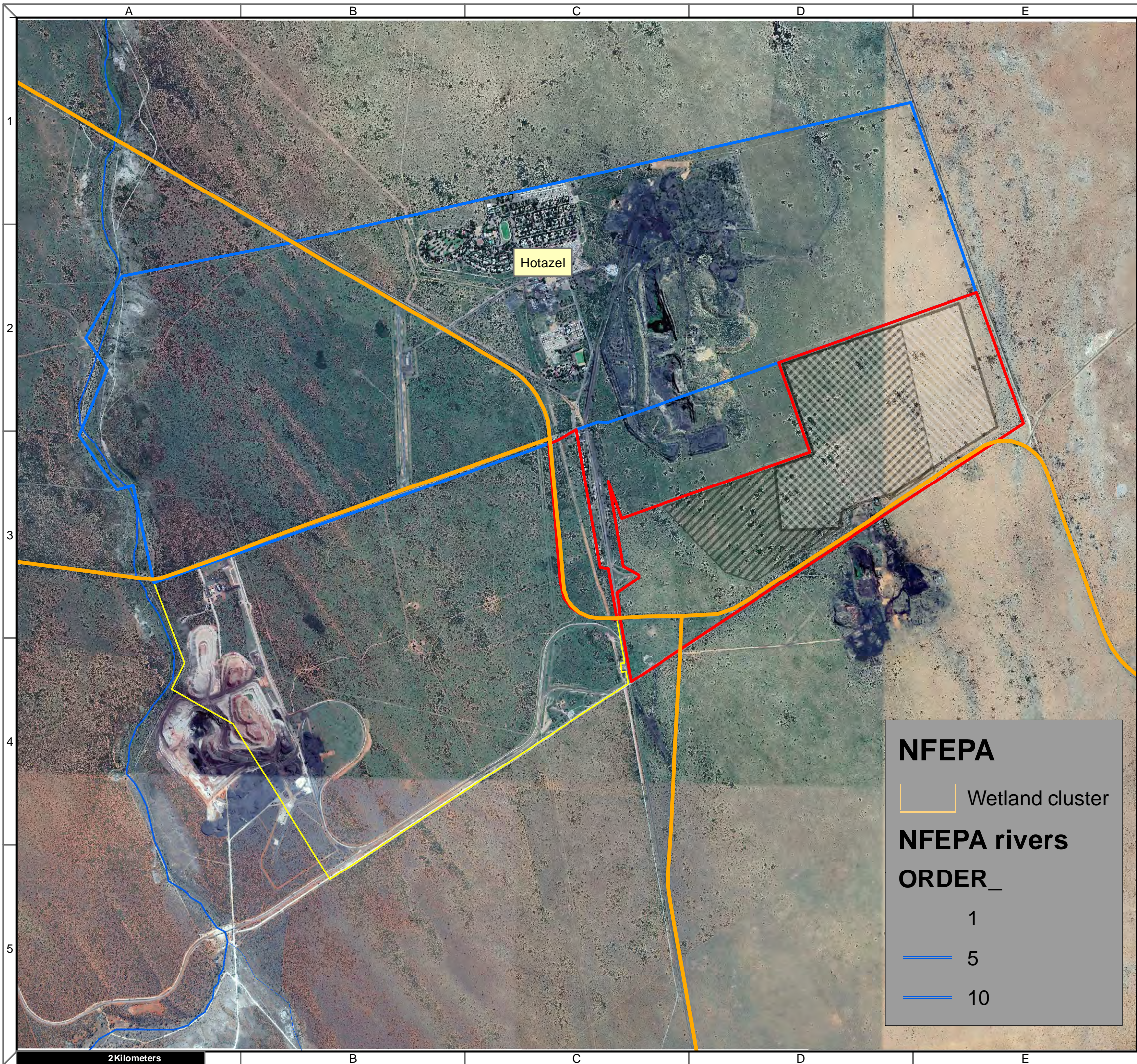
**Notes**

- Map Scale is 1: 40 000 when printed on A3
- Aerial image courtesy of Google Earth Pro 2018
- Imagery date May 2015
- Biodiversity data courtesy of SANBI BGIS 2018



Map Drawn By:	Date	Reference
Melissa Mackay	25 July 2018	JMO543

**Cape Environmental Assessment Practitioners (Pty) Ltd**  
 Telephone: +27 44 874 0365  
 Facsimile: +27 44 874 0432  
 Web: www.cape-eaprac.co.za  
 17 Progress St  
 PO Box 2070  
 George 6530



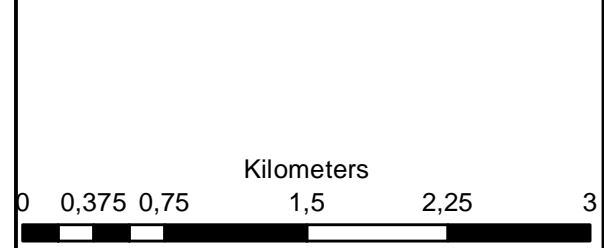
**Hotazel Solar  
Remainder Farm York A 279**

**Legend**

- Remainder 279
- Remainder 280
- Portion 11 of 279
- Alternative 1
- Alternative 2

**Notes**

- Map Scale is 1: 40 000 when printed on A3
- Aerial image courtesy of Google Earth Pro 2018
- Imagery date May 2015
- Biodiversity data courtesy of SANBI BGIS 2018

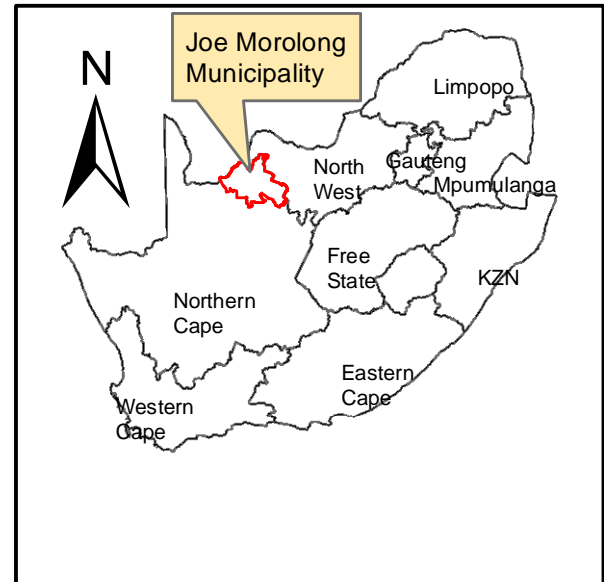
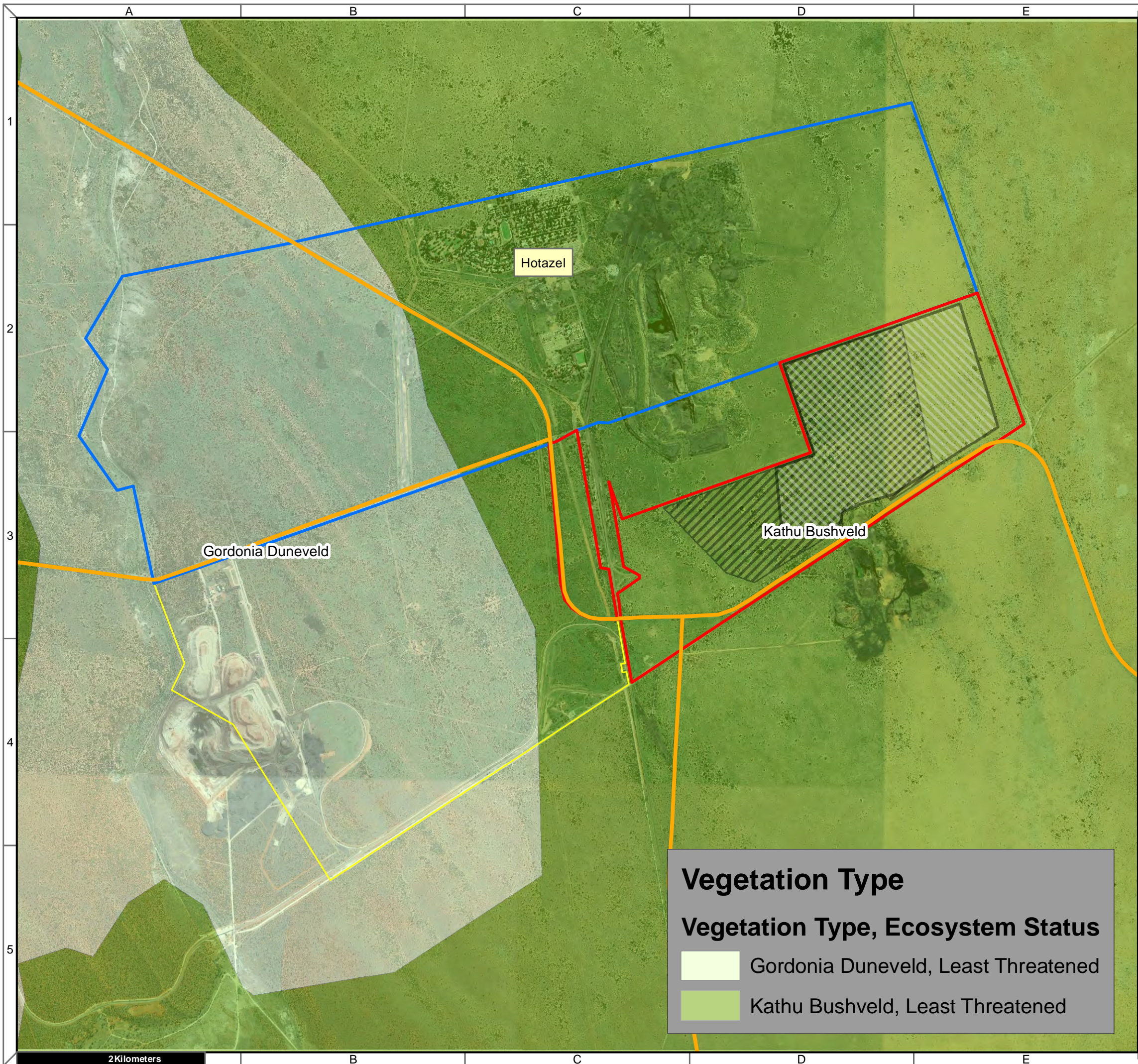


Map Drawn By:	Date	Reference
Melissa Mackay	25 July 2018	JMO543

**Cape Environmental Assessment Practitioners (Pty) Ltd**  
 Reg. No. 2008/042707

Telephone: +27 44 874 0365  
 Facsimile: +27 44 874 0432  
 Web: www.cape-eaprac.co.za

17 Progress St  
 PO Box 2070  
 George 6530



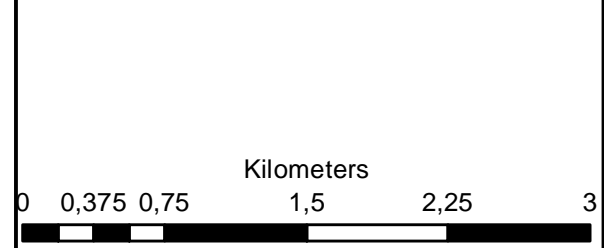
**Hotazel Solar  
Remainder Farm York A 279**

**Legend**

- RE\_279
- RE\_280
- Portion 11 of 279
- Alternative 1
- Alternative 2

**Notes**

- Map Scale is 1: 40 000 when printed on A3
- Aerial image courtesy of Google Earth Pro 2018
- Imagery date May 2015
- Biodiversity data courtesy of SANBI BGIS 2018



Map Drawn By:	Date	Reference
Melissa Mackay	25 July 2018	JMO543

**Vegetation Type**

**Vegetation Type, Ecosystem Status**

- Gordonia Duneveld, Least Threatened
- Kathu Bushveld, Least Threatened