

SWAN LAKE ECO ESTATE

SITUATED ON

Remainder of the Farm Swan Lake 755

Aston Bay

TOWN PLANNING REPORT



VPM PLANNING

www.vpmsa.co.za

9/28/2018



TABLE OF CONTENTS

1.	INTRODUCTION.....	4
2.	BACKGROUND	4
3.	PROPERTY INFORMATION	5
3.1	LOCALITY	5
3.2	PROPERTY DESCRIPTION	5
3.3	ZONING	6
3.3	CONDITIONS OF APPROVAL	6
4.	PROPOSAL	9
5.	NEED & DESIRABILITY OF THE PROPOSED UTILISATION OF LAND	10
5.1	THE NEED FOR A RESIDENTIAL DEVELOPMENT.....	10
5.1.1	ESTIMATE POPULATION GROWTH	10
5.1.2	ECONOMIC GROWTH	11
5.2	THE DESIRABILITY OF THE SITE FOR A RESIDENTIAL DEVELOPMENT	11
5.2.1	EXISTING RIGHTS	11
5.2.2	BIO -PHYSICAL SITE CONDITIONS.....	11
5.2.3	SURROUNDING AREA.....	12
5.2.4	COMPLIANCE WITH THE CONDITIONS OF APPROVAL SET OUT BY THE DEPARTMENT OF ECONOMIC DEVELOPMENT AND ENVIRONMENTAL AFFAIRS.....	13
5.3	CONSIDERATION OF APPLICABLE FORWARD PLANNING DOCUMENTS	17
5.3.1	NATIONAL DEVELOPMENT PLAN (NDP 2030).....	17
5.3.2	EASTERN CAPE PROVINCIAL GROWTH DEVELOPMENT PLAN (PDP 2030)	17
5.3.4	EASTERN CAPE PROVINCIAL SPATIAL DEVELOPMENT PLAN.....	19
5.3.3	COMPATIBILITY WITH SAHRA BAARTMAN SPATIAL DEVELOPMENT FRAMEWORK 2013.....	20
5.3.4	COMPATIBILITY WITH KOUGA SPATIAL DEVELOPMENT FRAMEWORK (2015)	21
6.	SUMMARY	23

LIST OF PLANS

Diagram 1: Locality Plan

Diagram 2: Aerial Photo

Diagram 3: Approved Subdivision Plan of Farm 755 (JEF402608)

Diagram 4: Site Development Plan for Erf 755 submitted with Final Scoping Report

Diagram 5: Amended Site Development RE/755rev8 dated 1 October 2018

Diagram 6: Development Footprint

LIST OF ANNEXURES:

Annexure A: Subdivision and Rezoning Approval dated 21 July 2009

Annexure B: Legal Opinion form R G Buchanan Sc

Annexure C: Zoning Rights Confirmation 20 September 2016

Annexure D: SG Diagrams

Annexure E: Title Deed

1. INTRODUCTION

VPM Planning has been appointed by Cape EAPrac Environmental Consultants to prepare a Town Planning Report to support the Environmental Impact Assessment (EIA) Report to be submitted for the extension of the environmental authorisation in terms of the National Environmental Management Act, 1998 (NEMA) in respect of listed activities that have been triggered by the planned development on the Remainder of Farm 755.

The purpose of this document is to report on the existing land use rights and constraints on the property and to assess the need and desirability of the project in terms of the planning policies and principles contained in National, Provincial and Municipal Spatial Development Frameworks applicable to the area.

2. BACKGROUND

The planning of the development of the Swan Lake Estate has commenced as far back as 2004 when the original Land Use Planning Ordinance application for rezoning and subdivision was submitted to the Kouga Municipality.

At the time, a simultaneous application was also made to the Department of Economic Development and Environmental Affairs for environmental authorisation in terms of the (then) Environmental Conservation Act (73 of 1989). The Record of Decision (ROD) was issued in March 2009.

The Kouga Council approved the Subdivision and Rezoning of the Remainder of the Farm Swanlake No 755, Aston Bay, in July 2009. The application involved the subdivision of the farm into 7 portions and the rezoning of the subdivided portions in accordance with Plan Nr JEF/4026/08 (attached as Diagram 3). The letter of approval is attached as “Annexure A”.

A further subdivision of the remainder occurred at the same time but under a different approval. Erven 1579 and 1580 was subdivided off the remainder and separate S.G. diagrams were created in accordance with a referenced Section 25 of LUPO approval (see “Annexure D”). The approved diagrams are attached. The diagrams have however not been registered. For practical purposes, these two cadastral entities

have been excluded from the amended development plan. When the land owner wants to develop this land, new planning and environmental applications will be submitted.

One of the conditions of the approval requires that a detailed Site Development Plan be submitted. A detailed site development plan was prepared by IDC consultants (see Diagram 4) but, as far as we can ascertain, this plan was never submitted for further municipal approval. It is the intention to submit a formal subdivision application in terms of the new Kouga Spatial Planning and Land Use Management By-law once the necessary environmental authorisations have been confirmed.

3. PROPERTY INFORMATION

3.1 LOCALITY

The property is situated in the Kouga Municipality, directly north-west of the Aston Bay township. (See Diagram 1: Locality Plan). The property can be access thought Dolphin Drive which forms part of the existing Aston Bay road network.

3.2 PROPERTY DESCRIPTION

Title Deed Description:	Remainder of the Farm No. 755, in the Kouga Municipality and Administrative District of Humansdorp, Easter Cape Province
21 Digit code	C03400000000075500000
Title Deed Number:	T 7271/1990 old Deed, a new Title Deed nr will be available soon
S.G. Diagram Nr:	11149/71
Title Deed Restrictions:	None relevant to this application
Property Size:	±39.5 ha (development area 38.2ha) -excl. erven 1580 &1579
Property Owner:	Arctismart Property Limited 2017/087939/07
Bonds:	None
Zoning:	Sub-divisional Area
Land Use	Vacant

PRIMARY RIGHTS

The primary rights of the property are confirmed as

“Sub-divisional Area” that allows subdivision into

154 residential units
or
±4 units per ha

CONDITIONS OF APPROVAL

3.3 ZONING

The Remainder (which forms the subject of this report) measures ±38.2ha and obtained a "Subdivision Area" zoning with a residential density of 154 units or ±4 units per ha according to the approved Subdivision Plan (JEF/4026/08 dated May 2009). This subdivision and zoning was confirmed with the registration of the subdivided portions in 2010.



Fig 1. Abstract from the Kouga Zoning Scheme indicating the “sub-divisional area” zoning

Furthermore, in August 2016 a legal opinion was obtained from Advocate R G Buchanan Sc confirming that the zoning of the land is still valid as sufficient “utilisation” of the properties has occurred to prevent any “lapsing” of approvals already granted (see Annexure B). In a letter dated 20 September 2016, the Kouga Municipality provided a written confirmation of agreement of the views expressed in the said legal opinion (See Annexure C).

3.3 CONDITIONS OF APPROVAL

The subdivision of the Remainder of the Farm 755 was approved in accordance with an endorsed Subdivision Plan (JEF/4026/08 dated May 2009- Diagram 3 attached). This plan indicates the Zoning of the Remainder to be “Subdivisional Area” with a residential density of 4 units per ha. The number of units has also been stipulated as 154.

The Zoning is subject to conditions of approval as set out in Council resolution 09/06/WTP9 par iii) a – n

Condition of approval	Status
a) That the subdivision be in accordance with Diagram JEF/4026/08 dated May 2009;	SG Diagrams were prepared and registered in accordance with this plan. See Annexure D
b) The applicant shall immediately after the Surveyor General approves the subdivision diagrams, submit copies of the diagram to Council;	This has been done in 2009, see Annexure D
c) That a detailed SDP indicating all structures, entrances, services and an engineering report regarding the requirements for the provision of water, sewerage, electricity, storm water and parking, be submitted for council for approval;	This has not been done as this layout will be subject to the ROD that has now lapsed. An engineer has been appointed to prepare the Engineering Report.
d) That no deviation of the approved SDP be allowed or reflected in the building plans submitted for approval	Noted, this is applicable to implementation phase.
e) That Service agreement with regard to bulk services fees be entered with Council and signed by all parties and that bulk service fees be paid in full prior to submission of building plans	Engineers have been appointed to deal with this matter.
f) That bulk service fee payable will be determined in accordance with the financial budget of the year in which it is paid.	Noted
g) That the Section 8 Zoning Scheme Regulations be applicable.	Noted
Condition h) – l) relate to provision of services and will be dealt with in the service report;	These conditions will have to be addressed in an Engineering Report and detailed Engineering designs that will follow.

m) that the applicant complies with the conditions as stipulated by the Roads Department;	We were unable to obtain any such prior conditions. The new layout will be circulated to the relevant department for further input.
n) That the applicant complies with conditions as stipulated by the DEDEA contained in their record of Decision dated 30 March 2009;	Conditions that have a direct impact on the land use and layout of the development is discussed in more detail in par 5.2.3
o) That the applicant complies with conditions stipulated by the Department of Agriculture;	We were unable to obtain any such prior conditions. Since the property is no longer zoned for agricultural purposes, further comment from this department is not required.
p) That in the event of the Council requiring an electrical or any other service servitude, the developer will accede to the registration of such servitudes without compensation;	The requirements for service servitudes will be addressed on the submission of the final subdivision plan, in correlation with the detailed engineering services plan.

4. PROPOSAL

Density

3 units per ha

The planned development will consist of a residential development consisting of 35 residential “footprint units” of 400m² in size with a limited development area of 250m² (as approved in the ROD) and 84 normal residential erven, as indicated on the revised Layout plan RE/755 rev 8. Previously the ROD approved 122 of these stands. The density of the development calculates to 3 units per ha, which is lower than the maximum density of 4 units per ha.

Access

The development consists of 2 distinct nodes, each with its own access from the exiting abutting road network. These access point has been assessed by the project engineers in terms of safe sight distances. The internal road network has been amended to minimise roads where possible. Access roads in the sensitive areas will only be 3m wide and will be designed in such a way as to avoid any sensitive vegetation. Road width in the normal residential section will be limited to 6m which will also include other engineering services.

Footprints

All the residential footprints and services have been places in such a way as to not encroach onto the no-go areas that was establish during the previous environmental assessments. As a result, most of the development footprint is limited to the north eastern and south western portions of the site, leaving the rest of the property as a large intact natural area that will be protected as formal conservation area. This nodal approach will minimize habitat fragmentation and will maintain landscape connections and ecological processes.

Furthermore, additional vegetation assessment was done by Dr David J Mc Donald in September 2017 and the layout was further amended to avoid any areas of special concern and protected species as identified on site.

Services

Infrastructure provision will be reported on by the Project Engineer. When the application was approved in 2009, the Municipality did at the time confirm that bulk services would be available.

5. NEED & DESIRABILITY OF THE PROPOSED UTILISATION OF LAND

The **need for and desirability** of a development proposal forms a **key component** of any **development application**. The Environmental Impact Assessment Regulations, 2014 states that when considering an application, the competent authority must have regard, the need for and desirability of the undertaking of the proposed activity.

5.1 THE NEED FOR A RESIDENTIAL DEVELOPMENT

5.1.1 ESTIMATE POPULATION GROWTH

The Socio-economic profile of the Kouga Municipality provides a clear indication of human needs and demands on service delivery, housing, land and development.

According to the Kouga Spatial Development Framework (2015), population growth rates for Kouga Local Municipality is one of the highest in the Eastern Cape, with Humansdorp and Jeffreys Bay, showing the highest growth. The population has grown exponentially over the last 20 years and the Municipality is regarded as one of the major growth points and catalysts for population influx. It is anticipated that the population will grow at approximately 3.2% per annum with an estimated 2021 population of approximately 137 981. At this rate, households will increase to 39 423, or additional 11 768 households before 2021.

Population growth estimates are one of the key principles for future land identification, urban edge delineation, service provision and land use planning. The Kouga SDF has taken the future population growth into account and have earmarked certain areas for future residential extension. While most of housing need is admittedly in the low-income category, extension for middle and high-income housing areas has also been made available as part of an integrated strategy to attract people with high skill levels, increase the rates base, promote local economic development and to ensure a variety of housing types.

5.1.2 ECONOMIC GROWTH

One of the main aims of the Kouga SDF is to promote economic development and proactive planning to ensure economic growth. According to the SDF, the construction industry dominated employment in the secondary sector, representing an average of 66.8 %. To boost economic growth and attract private investment, the Municipality has identified certain areas for development that will not only encourage employment in the construction sector but will also create the spin off benefits of a growing upper middleclass population that will increase the spending patterns in the local economy.

5.2 THE DESIRABILITY OF THE SITE FOR A RESIDENTIAL DEVELOPMENT

5.2.1 EXISTING RIGHTS

The planned development is in line with the primary zoning rights granted and it can therefore be argued that the desirability of the land use and density has already been considered and confirmed. Presently, the desirability considerations should therefore focus in the layout itself, as the land use rights have already been established through the SDF and the Zoning of the land.

The scale of the current proposal has been significantly reduced. The amended proposal comprises of 119 residential opportunities and the granted zoning rights allows for 154 units. The prescribed density is 4 units per ha and the development density currently calculates to approximately 3.

5.2.2 BIO -PHYSICAL SITE CONDITIONS

In this context, desirability relates to design of the development in relation to spite specific conditions. The biophysical site characteristics and surrounding land uses plays a role in this regard.

The site is relatively sensitive as it contains pockets of indigenous vegetation and flood lines. The property measures ±38.2ha , and as indicated on the Development footprint plan, more than 75% of the property, has been earmarked for conservation purposes. The planned development responds well to the bio-

physical site conditions and does not encroach onto areas of very high sensitivity, which include protected vegetation and areas below the flood line or areas that has been identified as no-go areas. The amended layout complies with all the conditions set out in the original Environmental Authorisation and Rezoning approval.

Presently the site is not maintained and appear to be a no-mans land used for illegal dumping and hiding place for criminals. The land in its present form is a security risk for the adjacent neighbourhood and, being adjacent to the existing urban fabric, vulnerable to illegal occupation.

The proposal to develop the land is desirable in the sense that a formal conservation status will be granted and that the residential component will ensure an ongoing rehabilitation and enjoyment of the natural area.

5.2.3 SURROUNDING AREA

The Remainder of Farm 755 is situated directly adjacent to an existing residential area, allowing easy access to roads and service. The Aston Bay area to the south east is a low density residential character. To the north the farm borders on the undeveloped phases of the Jubilee Estate that was planned to include a golf course and retirement village. To the east and west the remainder of the farm is surrounded by undeveloped farm portions that also obtained a " Sub-divisional - Area" zoning and which are also earmarked for future urban expansion, as indicated on the Kouga Spatial Development Framework 2015.

5.2.4 COMPLIANCE WITH THE CONDITIONS OF APPROVAL SET OUT BY THE DEPARTMENT OF ECONOMIC DEVELOPMENT AND ENVIRONMENTAL AFFAIRS

One of the Rezoning Conditions of approval is that a detailed Site Development plan be submitted and that this plan comply with the Conditions of the environmental approval. The desirability of the project can be measured against compliance with these conditions.

The record of decision that was issued in March 2009 relates to all 7 portions that formed the Remainder of Farm 755. This application only relates to the Remaining portion as indicated on the Subdivision Plan.

The ROD stipulates a density of 35 development footprints and 122 erven for this portion. It is further state that the conditions contained in the ROD will change the number and position of the different type of units.

Par 8.2 of the ROD set out specific conditions to establishment (inclusive of layout and design) of the residential units and infrastructure.

CONDITIONS 8.2.2.1

No development inclusive of services on areas indicated as being of very high sensitivity;

Vegetation Sensitivity Map

CONDITIONS 8.2.2.2

No erven are to be in high sensitive areas, but the 400m² footprint stands can be considered in these areas;

CONDITIONS 8.2.2.3

Placement of free standing units in high sensitivity areas should be done in such a way that length of access roads is minimised.

Condition 8.2.2. requires an amended layout plan to provide for among others the following:

The vegetation sensitivity is depicted on a map that was included in the “Addendum Environmental Report to the final scoping report of November 2007”. As indicated on the extract of this map (see Figure 2 below), the areas of very high sensitivity (purple) does not occur on the remainder.



Fig. 2 Vegetation sensitivity map used in the Environmental Report approved by the DEDEA.

In the original layout submitted with the Final Scoping Report several of the erven encroached onto the Highly sensitive area (red on the map), although all erven were placed outside the “No Go” areas as stipulated on the Scoping Report. The layout was amended to exclude all residential erven from the high sensitive areas. There are 35 x 400m² footprint stand in the high sensitive area.

The length and width of access road has been minimised as far as possible.

CONDITION 8.2.2.4

No other infrastructure inclusive of playparks to be located in high sensitive areas

Roads will have a limited width of 3m in this area and will include service infrastructure and no other infrastructure has been planned outside the areas as indicated on the maps. There are 2 service stands within the development footprint outside the sensitive area.

CONDITIONS 8.2.2.7

Indicate exact location of free standing footprints must be indicated, inclusive of coordinates

The footprints have been placed and coordinates are indicated on the layout plan. Minor deviations may occur on site to ensure the absolute minimum disturbance of sensitive vegetation.

CONDITIONS 8.2.2.8

Indicate exact location of other components e.g. roads and services

Roads and services are indicated on the layout plan.

CONDITIONS 8.2.2.9

No Infringement of the development into the ecological zone

The ecological zone is indicated on the Layout Plan and the development does not encroach onto this area.

CONDITIONS 8.2.3 & 8.2.4

Individual Free-standing footprints to be restricted to a total footprint of 400m² with development footprint inclusive of decks, paved areas and swimming pools to be limited to 250m².

The footprint sizes are indicated on the amended Layout Plan and should also be included in the Architectural Design Guideline that will form part of the Home Owners Association Rules. The Design Guidelines will have to be approved by the municipality and will form part of the subdivision application.

CONDITIONS 8.2.5

Height restriction of buildings to be 5m above NGL

The building restriction must be included in the Architectural Design Guideline that will form part of the Home Owners Association Rules.

CONDITIONS 8.2.6

Roads in “high sensitive area” to be limited to a width of 3m with pull off bays at intervals

Roads in this area will be 3m in width. Exact position of pull off bays have not been determined and must be designed in more detail as part of the detailed engineering services plan.

CONDITIONS 8.2.13

All open space to be rezoned to “Private Open Space III”.

All open spaces will be zoned “Private Open Space III” and the residential component will be zoned “Residential 1” in terms of the provisions of the Jeffreys Bay Zoning Scheme Regulations.

5.3 CONSIDERATION OF APPLICABLE FORWARD PLANNING DOCUMENTS

Another test of desirability of a project is to measure it against the broader strategic context described in all relevant Spatial Development Frameworks on Local, Municipal, District, Regional, Provincial and National level. In this regard, the application can be evaluated against the Kouga Spatial Development Framework (SDF2015), the Saartjie Baartman Regional Spatial Development Framework, the Eastern Cape Provincial Spatial Development Framework 2015 and the National Development Plan 2030.

5.3.1 NATIONAL DEVELOPMENT PLAN (NDP 2030)

The NDP aims to eliminate poverty and reduce inequality by 2030. According to the plan, South Africa can realise these goals by drawing on the energies of its people, growing an inclusive economy, building capabilities, enhancing the capacity of the state, and promoting leadership and partnerships throughout society.

Growth and jobs, education and skills, and a capable and developmental state are the main aims of this document.

South Africa is mandated by this Act to be a developmental state. In this light, it will be difficult for any decision-making body to deny any form of economic activity unless there are substantial negative environmental impacts that cannot be mitigated.

The proposal is in line with the aims of the National Development Plan and the country's mandate to be a developmental state.

5.3.2 EASTERN CAPE PROVINCIAL GROWTH DEVELOPMENT PLAN (PDP 2030)

The PDP's strategy draws extensively on the NDP and is also developmental in nature. Elements of the PDP Strategy include:

- The need to increase the overall rate of investment (both public and private).
- Economic infrastructure as a foundation for economic development.

- The need for public investment in infrastructure to “crowd in” private investment. New infrastructure should promote private-sector efficiency and reduce costs. New infrastructure projects should be carefully selected to ensure this.
- An emphasis on partnerships to develop high-potential economic sectors.

The PDP identified seven sectors with high potential for development:

- Agriculture (including forestry and fisheries), particularly intensive and irrigated horticulture.³⁴
- Mining and energy, particularly hydrocarbons (Algoa Bay offshore resources and Karoo shale-gas).
- **Construction** related to large infrastructure, new property developments and the upgrading of human settlements.
- Manufacturing, particularly diversification from automotive into maritime and new-generation products.
- **Tourism, including eco-tourism**, heritage, conferences and sports.
- The social economy, including public works and asset-based community development.
- Knowledge-based services, including R&D, professional services and business services

The Cacadu region has been identified as having a high potential in the tourism/property developments. It has potential as a primary trading hub, with Jeffreys Bay as a growth node.

The PDP acknowledges that a small and slow-growing private sector with low levels of fixed investment has been identified as one of the factors that have contributed to high unemployment in the province, and many of the strategies contained in the document aim to encourage private investment, among others in property development.

The PDP contains Strategic Actions to achieve the identified objectives objectives

Strategic action 1.5.3 specifically deals with promoting grow and develop the construction industry (Pg 78). The strategy is to ensure that the present infrastructure pipeline is properly planned and implemented and to **create enabling conditions for property development** and building a skills base.

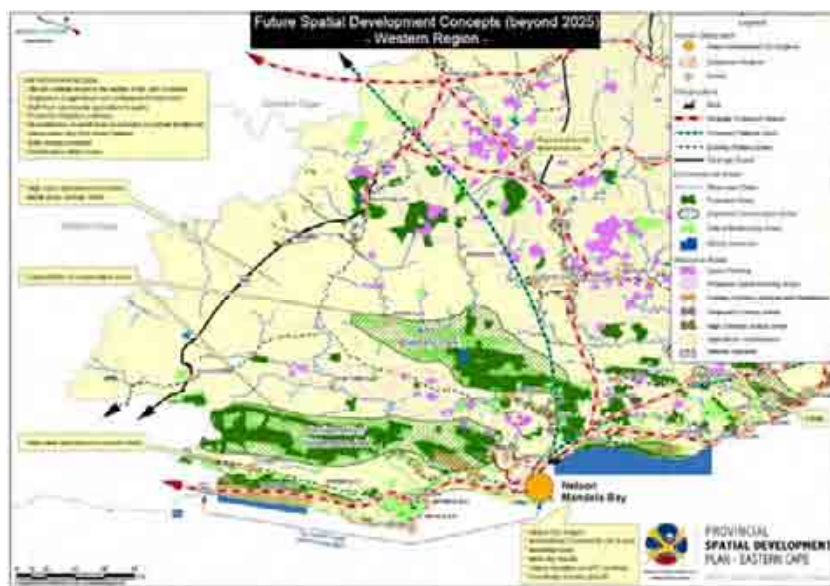
Strategic action 1.5.5 deals with promoting growth and development in the tourism industrysing competitive advantages to grow volume and value of eco-tourism, heritage and sports tourism and improving access infrastructure and build stronger local tourism networks.

The proposal is in line with the aim and vision of the Provincial Development Plan. Jeffreys Bay has been identified as growth node with strong potential in the tourism/property development sector.

5.3.4 EASTERN CAPE PROVINCIAL SPATIAL DEVELOPMENT PLAN

The single most important guideline for Municipal land use management and Municipal land use planning is the Provincial Spatial Development Plan (PSDP) for the Eastern Cape. The Plan provides a development vision for the Eastern Cape Province and intends to achieve the following:

- Provision of a co-ordinating provincial spatial framework to direct public sector investment towards a common vision and set of objectives.
- Provision of a broad policy framework to give direction to all other development agencies in the Province regarding the priorities of government.
- Enable public investment programmes to be more efficient.
- Opportunities to create an environment within which communities and the private sector can operate more effectively to achieve sustainable economic growth in the Province.
- Protection of the natural environmental systems.
- Efficient use of resources at Provincial Level.
- Prevention of duplication of effort by different departments and spheres of government.
- Enable District Municipalities and Local Authorities to work within a broad policy framework when preparing and updating Integrated Development Plans (IDP's) and Spatial Development Framework Plans (SDF's).



The PSDP supports the various programmes of the PGDP by providing spatial guidelines to achieve co-ordinated investment of public resources and to achieve the greatest impact possible in agreed shared impact areas.

5.3.3 COMPATIBILITY WITH SAHRA BAARTMAN SPATIAL DEVELOPMENT FRAMEWORK 2013

The Kouga Local Municipality is situated in the Eastern Province and is one of 9 Local Municipalities located within the Sarah Baartman District Municipal area. The District Spatial plan gives guidance to the Local Municipalities to ensure an integration of spatial plans.

The objectives of this spatial plan are:

- The accommodation of the biodiversity resource area footprint and guidelines as set out in the ECPSDF in the Local Municipal SDF's.
- Efficient and integrated spatial development of infrastructure and transport systems.
- A diverse and growing economy supported by sustainably utilised natural resources.
- Managed development of compact and sustainable human settlements with appropriate infrastructure

Jeffreys bay is identified as a primary node in the region. This node reflects a larger urban area with strong administrative financial and residential functions and components. Infrastructure is relatively well developed with supporting social facilities and amenities. Future growth and investment should generally be prioritized in this node, based on growth potential and potential to support local economic development.

The Kouga SDF is aligned with the District Spatial Development Plan.

5.3.4 COMPATIBILITY WITH KOUGA SPATIAL DEVELOPMENT FRAMEWORK (2015)

The Kouga Spatial Development Framework (KSDF) is the most significant Spatial Development Framework that needs to be consulted before any decision about land use is made. The Kouga Spatial Development Framework (KSDF) aims to formulate spatially based policy guidelines whereby changes, needs and growth in the region can be managed to the benefit of the whole community. The SDF guide and inform all decisions of the Municipality relating to use, development and planning of land, within a balanced assessment of need and to provide adequately for social and economic demands within a growing economy and population and is aligned with provincial growth and development initiatives.

The subject property is situated in within the urban edge of Jeffreys bay, in an area that has been earmarked for low density residential development. The previously approved SDF's of 2005 and 2009 also earmarked the area for similar development densities.

The Eastern Cape Biodiversity Plan 2007 earmarks the area as a CBA2 (Terrestrial Critical Biodiversity Area), and for that reason specific development parameters have been assigned to this specific area (identified as area 9)

Development Parameters prescribed for this area include the following:

- Low density residential (10 units per hectare).
- Subject to environmental parameters and low density eco estate or resort based environmental guidelines.
- Environmental impact assessment processes applicable.

The proposal has a low density residential character and will be managed as an eco-estate, with more than 75% zoned for conservation purposes. The development has been subject to an environmental application and received a positive ROD in 2009 and the proposed layout plan has been amended to accommodate all the conditions laid down by the Department.

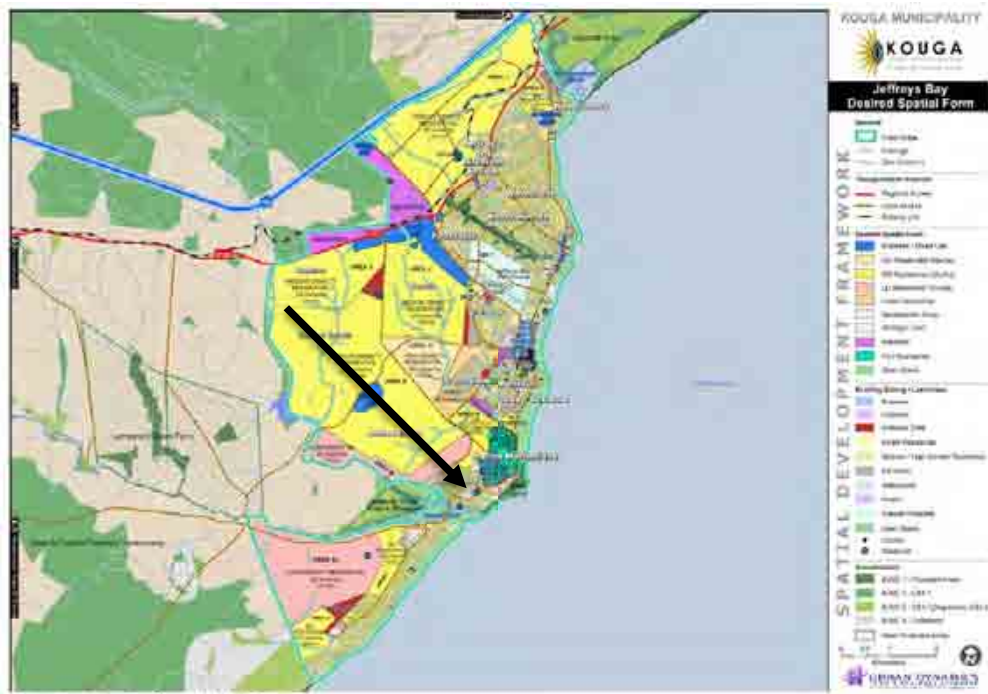


Figure 3: Extract from the Jeffrey's Bay SDF



Figure 4: Extract from the Aston bay area

The Proposal is in line with the provisions of the Kouga Spatial Development Framework

6. SUMMARY

ZONING: The zoning the property is zoned “Sub-divisional Area” which allow for the further subdivision of the land, subject to certain conditions. The planned development is aligned with the maximum development density of 4 units per ha as set out in the zoning approval.

ZONING APPROVALS: The zoning of the property is subject to a density restriction of 4 units per ha and the proposal complies with this restriction.

TITLE DEED RESTRICTIONS: There are no restrictions or servitudes in the title deed that prevents the further subdivision of the property.

COMPATIBILITY WITH THE PROVINCIAL SPATIAL DEVELOPMENT FRAMEWORK: PSDF supports the various programmed of the PGDP by providing spatial guidelines to achieve coordinated investment of public private resources and to achieve the greatest impact possible in agreed shared impact area.

COMPATIBILITY WITH THE KOUGA SPATIAL DEVELOPMENT FRAMEWORK: The property falls within the Urban Edge and is earmarked for low density residential development (10 units per ha).

COMPATIBILITY WITH THE PROVISIONS OF THE ROD: The development proposal has been altered to comply with the conditions of approval of the ROD that has subsequently lapsed.

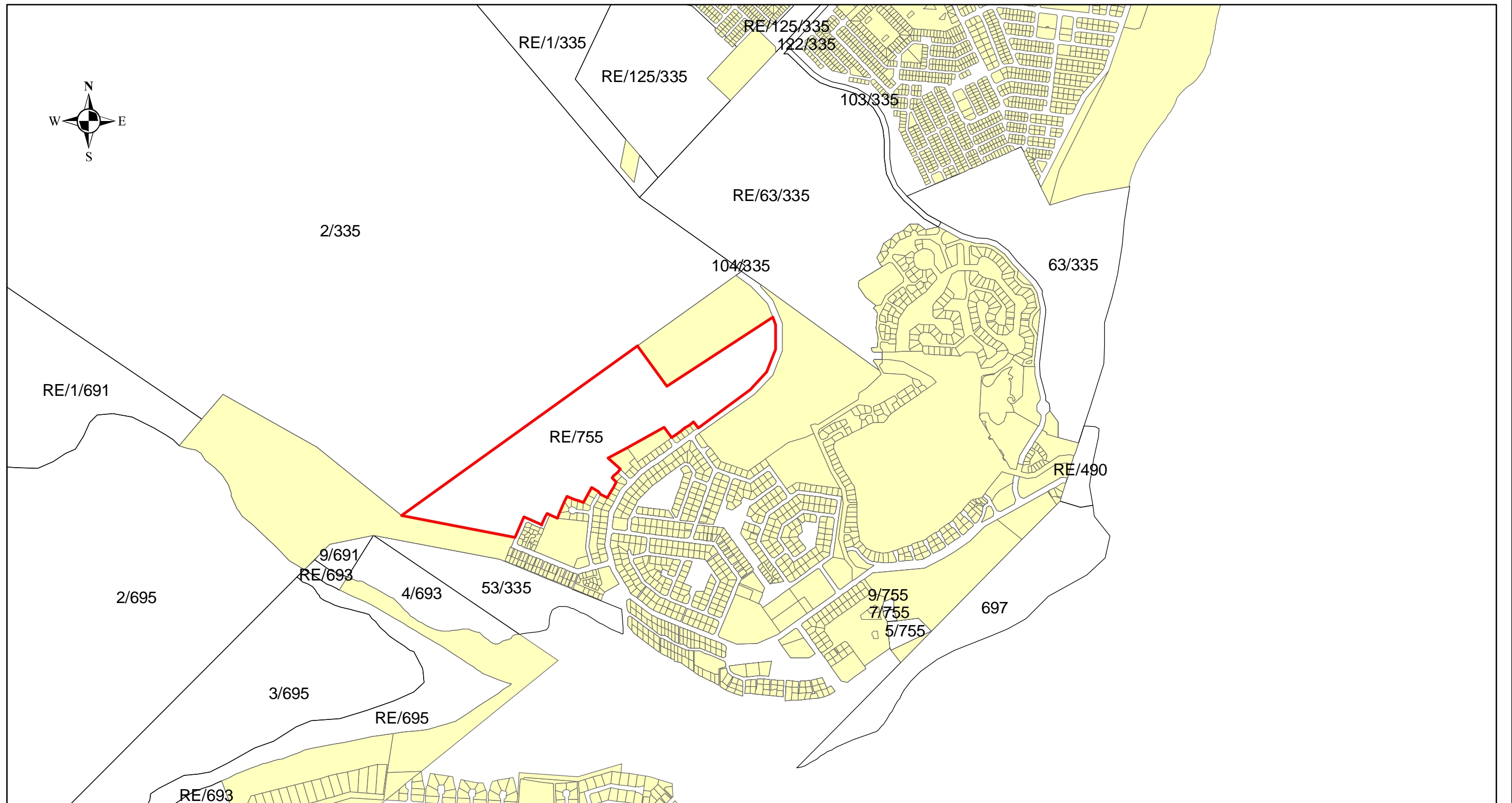


DIAGRAM 1 :LOCALITY PLAN

0 375 750 1 500 Meters



Re /755 Knysna

Aston

Plan Nr:

Date: SG CAD 2015

Diagram 2 : Aerial Photo

SWAN LAKE ECO ESTATE

SITUATED ON THE REMAINDER OF THE FARM SWANLAKE NO 755
in the Kouga Municipality and Administrative Region of Humansdorp

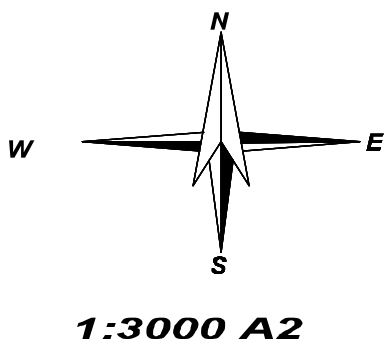
Legend

- Property Boundary of the Remainder of Farm 755
- High sensitivity vegetation as depicted on Fig. 4.2 of the "Addendum Environmental Report"
- Ecological Zone as depicted on Fig. 6.3 of the "Addendum Environmental Report"
- 1: 100 year Flood line
- No - go Area
- 400m² footprints with 250m² development area x 35
- minimum 500m² Residential erven x 84(122 previously approved)
- Service sites x 2
- Service Servitudes
- 3m wide access roads with passing lanes
- 6m wide access roads

FFR NUMBER	SQUARE METRES	EPF NUMBER	SQUARE METRES	ERF NUMBER	SQUARE METRES
1	546	31	604	61	608
2	539	32	660	62	692
3	547	33	776	63	715
4	564	34	668	64	618
5	567	35	620	65	614
6	540	36	613	66	767
7	540	37	654	67	700
8	540	38	650	68	634
9	540	39	677	69	563
10	540	40	635	70	514
11	665	41	661	71	542
12	539	42	712	72	582
13	587	43	748	73	795
14	602	44	660	74	596
15	583	45	758	75	1123
16	563	46	853	76	684
17	607	47	758	77	686
18	619	48	539	78	769
19	639	49	638	79	668
20	753	50	719	80	604
21	760	51	649	81	626
22	742	52	602	82	626
23	597	53	618	83	626
24	539	54	623	84	624
25	664	55	659	85	745
26	570	56	615		
27	629	57	556		
28	594	58	615		
29	638	59	618	1	535
30	560	60	617	86	600

NOTES:
Sizes and dimensions are approximate and subject to final survey.
COPY RIGHT:
This plan may not be copied or amended without the written consent of VPM Planning

AMENDED SITE DEVELOPMENT PLAN IN ACCORDANCE WITH CONDITIONS CONTAINED IN RDC E008 W 17204 ISSUED BY THE EASTERN CAPE DEPARTMENT OF ECONOMIC DEVELOPMENT AND ENVIRONMENTAL AFFAIRS, 31ST 21 MARCH 2003



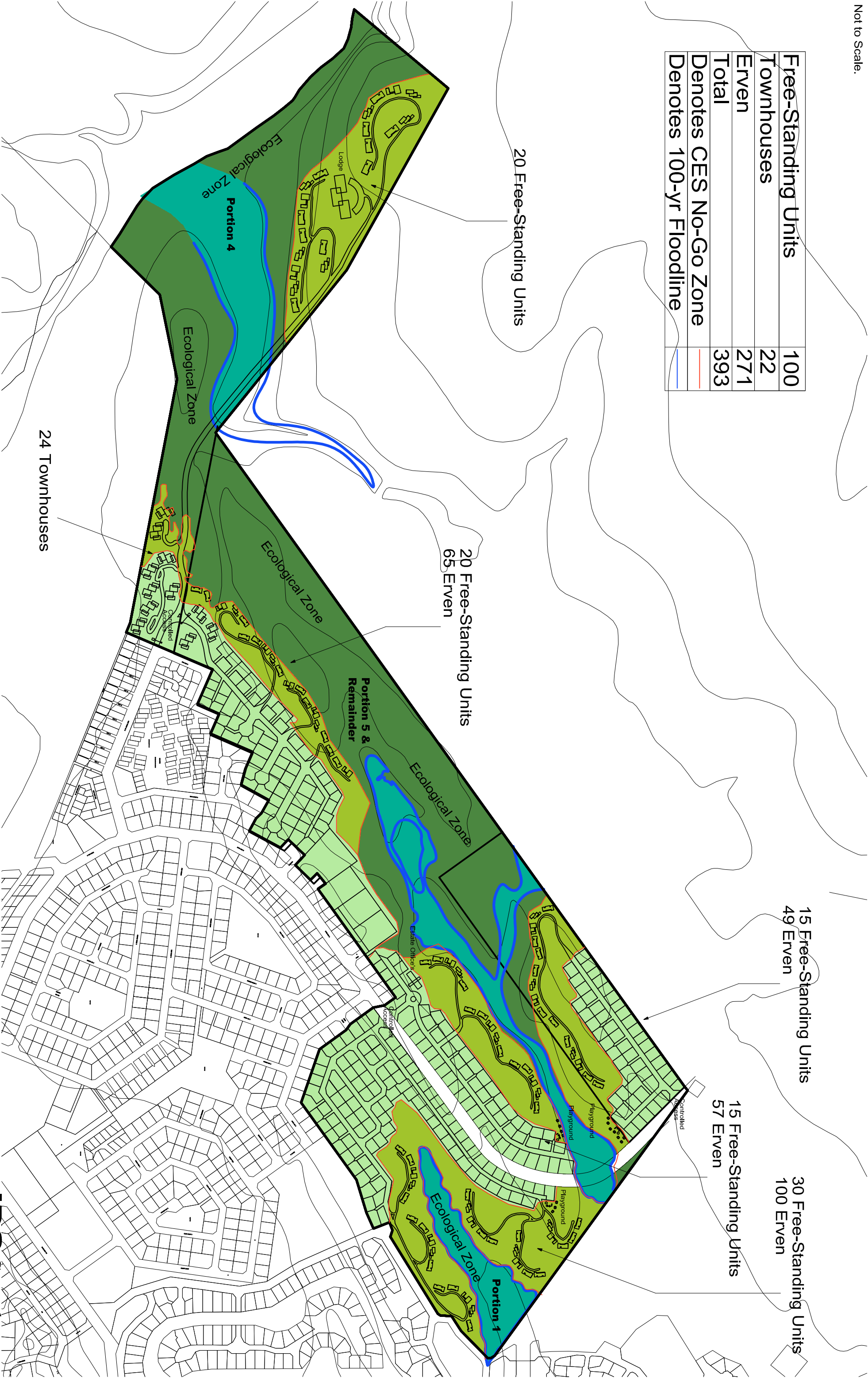
RE/755 SWANLAKE

DRAWN BY : LIZEMARIE BOTHA

DRW NR:RE/755/AM/rev8

DATE: 1 October 2018

Free-Standing Units	100
Townhouses	22
Erven	271
Total	393
Denotes CES No-Go Zone	
Denotes 100-yr Floodline	



Buchner Trust - Unit Layout

Legend

- Property Boundary of the Remainder of Farm 755
- High sensitivity vegetation as depicted on Fig. 4.2 of the "Addendum Environmental Report"
- Ecological Zone as depicted on Fig. 6.3 of the "Addendum Environmental Report"
- 1: 100 year Flood line
- No - go Area
- 400m² footprints with 250m² development area x 35
- minimum 500m² Residential erven x 84(122 previously approved)
- Service sites x 2
- Service Servitudes
- 3m wide access roads with passing lanes
- 6m wide access roads

SWAN LAKE ECO ESTATE

SITUATED ON THE REMAINDER OF THE FARM SWANLAKE NO 755
in the Kouga Municipality and Administrative Region of Humansdorp

PROPERTY COORDINATES					
	Y	X		Y	X
1A	5942.485	377203.900	159	6801.052	377980.080
1B	5939.770	377203.304	158	6788.128	377987.487
1C	5939.888	377203.325	157	6777.180	377993.278
1D	5940.925	377204.484	144	6788.891	377992.298
2A	5940.032	377203.307	143	6789.125	377995.400
2B	5940.034	377203.303	142	6788.291	377998.238
2C	5937.031	377203.303	141	6783.004	377999.893
2D	5938.008	377204.304	136	6783.303	377997.423
3A	5937.039	377203.300	135	6783.510	377998.327
3B	5936.032	377203.300	134	6783.440	377998.173
3C	5942.038	377206.300	132	6784.486	377999.075
3D	5938.036	377203.300	130	6784.404	377997.813
4A	5947.044	377203.477	129	6782.725	377999.007
4B	5931.007	377204.468	126	6747.097	377997.302
4C	5938.003	377207.465	125	6743.174	377996.548
4D	5935.000	377202.460	112	6736.072	377992.248
5A	5938.005	377203.307	113	6733.426	377988.485
5B	5933.007	377240.303	111	6738.331	377993.577
5C	5931.004	377202.303	110	6733.238	377991.253
5D	5937.007	377204.468	106	6688.111	377985.503
6A	5934.033	377203.340	105	6675.191	377980.205
6B	5938.036	377203.340	104	6671.030	377980.298
6C	5934.032	377203.333	103	6665.053	377980.515
6D	5932.039	377240.335	102	6660.037	377980.534
7A	5938.108	377203.303	100	6647.003	377981.435
7B	5932.038	377207.460	102	6633.487	377980.680
7C	5932.033	377209.460	100	6627.008	377977.519
7D	5935.030	377240.311	206	6634.540	377980.373
8A	5932.040	377222.303	205	6627.290	377980.134
8B	5935.032	377207.460	206	6626.089	377981.203
8C	5940.039	377206.303	204	6633.548	377981.884
8D	5935.036	377240.307	211	6620.331	377980.853
9A	5938.037	377203.300	212	6625.153	377980.503
9B	5942.040	377980.300	211	6627.263	377981.571
9C	5940.036	377203.603	212	6629.081	377980.230
9D	5940.033	377203.500	209	6629.497	377979.373
10A	5925.102	377203.117	205	6646.533	377979.448
10B	5926.105	377203.113	206	6651.417	377980.840
10C	5917.101	377203.112	202	6646.797	377980.447
10D	5913.108	377203.114	206	6646.080	377977.444
11A	5929.032	377203.110	209	6651.051	377974.220
11B	5913.038	377203.112	202	6651.207	377974.049
11C	5914.031	377204.110	205	6652.265	377973.102
11D	5917.038	377223.113	244	6652.28	377974.888
12A	5924.032	377225.113	245	6646.093	377974.737
12B	5924.032	377225.113	245	6646.792	377977.498
12C	5940.030	377207.700	245	6651.074	377976.120
12D	5920.030	377207.800			
13A	5920.030	377207.800			

ERF NUMBER	SQUARE METRES	ERF NUMBER	SQUARE METRES	ERF NUMBER	SQUARE METRES
2	546	31	604	61	608
3	539	32	660	62	692
4	547	33	776	63	715
5	564	34	668	64	618
6	567	35	620	65	614
7	540	36	613	66	767
8	540	37	654	67	700
9	540	38	650	68	634
10	540	39	677	69	563
11	665	40	635	70	514
12	539	41	661	71	542
13	587	42	712	72	582
14	602	43	748	73	795
15	583	44	660	74	596
16	563	45	758	75	1123
17	607	46	853	76	684
18	619	47	758	77	686
19	639	48	539	78	769
20	753	49	638	79	668
21	760	50	719	80	604
22	742	51	649	81	626
23	597	52	602	82	626
24	539	53	618	83	626
25	664	54	623	84	624
26	570	55	659	85	745
27	629	56	615		
28	594	57	556		
29	638	58	615		
30	560	59	618		
		60	617		

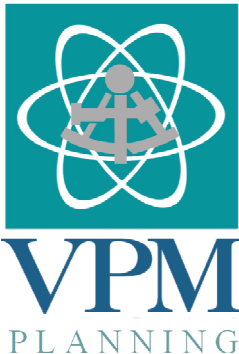
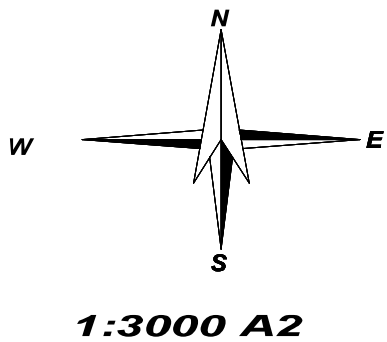
NOTES:

Sizes and dimensions are approximate and subject to final survey.

COPY RIGHT:

This plan may not be copied or amended without the written consent of VPM Planning

AMENDED SITE DEVELOPMENT PLAN IN ACCORDANCE WITH CONDITIONS CONTAINED IN ROD: EC08/M/12-04 ISSUED BY THE EASTERN CAPE DEPARTMENT OF ECONOMIC DEVELOPMENT AND ENVIRONMENTAL AFFAIRS, DATED 31 MARCH 2009



RE/755 SWANLAKE

DRAWN BY : LIZEMARIE BOTHA

DRW NR:RE/755/AM/rev8


DATE: 1 October 2018

SWANLAKE ECO ESTATE


SITUATED ON THE REMAINDER OF THE FARM SWANLAKE NO 755

in the Kouga Municipality and Adiministrative Region of Humansdorp

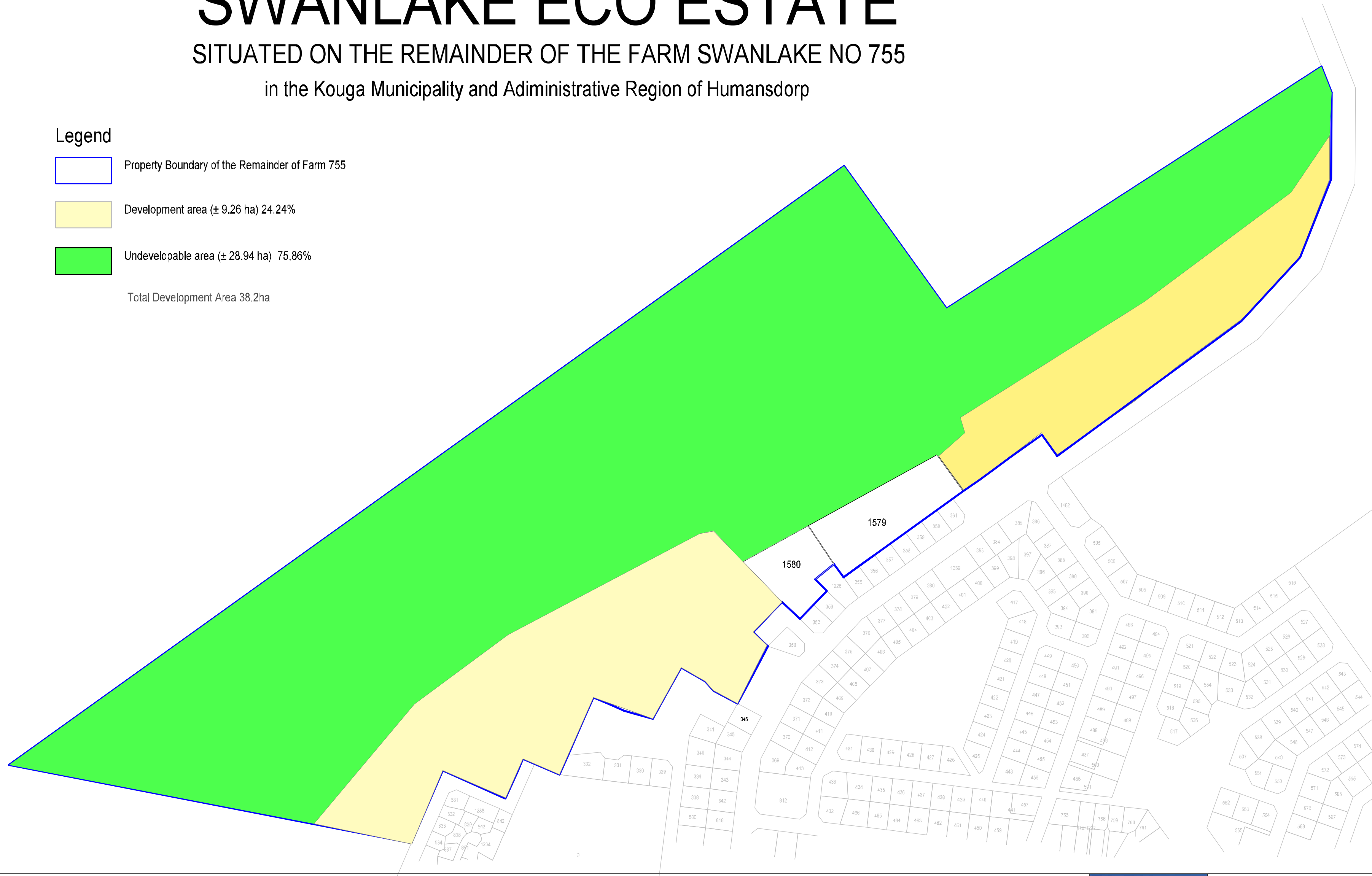
Legend

 Property Boundary of the Remainder of Farm 755

 Development area (± 9.26 ha) 24.24%

 Undevelopable area (± 28.94 ha) 75.86%

Total Development Area 38.2ha



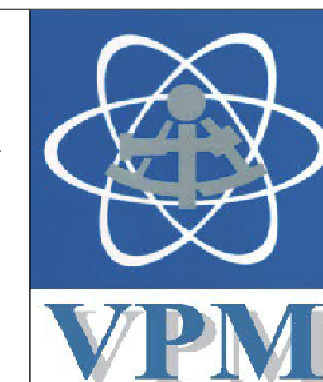
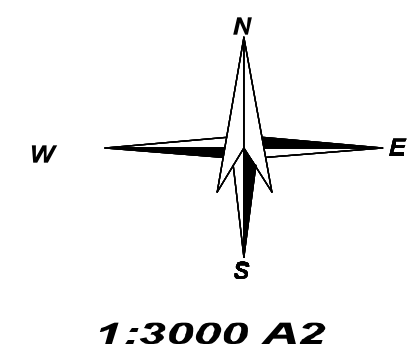
NOTES:

Sizes and dimensions are approximate
and subject to final survey.

COPY RIGHT:

This plan may not be copied or amended
without the written consent of VPM Planning

DIAGRAM 6: DEVELOPMENT FOOTPRINT



RE/755 SWANLAKE

DRAWN BY : LIZEMARIE BOTHA

DRW NR:RE/755/AM/rev4

DATE: 06 JULY 2018



Jeffreys Bay Laene Thornhill	Humansdorp	St Francis Bay Cape St Francis Oyster Bay	Hankey	Patensie
PO Box 21 Jeffreys Bay 6330	PO Box 26 Humansdorp 6300	PO Box 137 St Francis Bay 6312	PO Box 3 Hankey 6360	PO Box 129 Patensie 6335
Tel: 042 293 1111 Fax: 042 293 1114	Tel: 042 295 1111 Fax: 042 291 9567	Tel: 042 294 0309 Fax: 042 294 0105	Tel: 042 264 0302 Fax: 042 264 0259	Tel: 042 283 0267 Fax: 042 283 0563

Ref nr: EVDM/sg/R755

21 July 2009

Metroplan
Town and Regional Planners
PO Box 12313
CENTRAHIL
6006

Sir

**APPLICATION FOR SUBDIVISION AND REZONING : REMAINDER OF THE FARM
SWANLAKE NO. 755, HUMANSDORP**

I refer to your application dated September 2004.

Attached please find a copy of Council Resolution 09/06/WTP9 dated 8 July 2009 whereby the above-mentioned application was approved subject to the conditions as contained in the said Resolution.

Attached endorsed diagrams.

Yours faithfully

E. van der Merwe
DR E.M. RANKWANA
MUNICIPAL MANAGER

Refer : E. van der Merwe (042-2002279)

**09/06/WTP9 APPLICATION FOR THE SUBDIVISION AND REZONING OF THE
REMAINDER OF THE FARM SWANLAKE NO 755, HUMANSDORP (R755)**

Resolved: (8 July 2009)

- i) That the application for the subdivision of the Remainder of the Farm Swanlake no 755, division of Humansdorp, into seven portions be approved in terms of Section 25 of Ordinance 15 of 1985.
- ii) That the application for the rezoning of the subdivided portions in accordance with diagram JEF/4026/08 dated May 2009 in terms of Section 17 and read in conjunction with Section 22 of the land Use Planning Ordinance, 1985 be approved as follows:

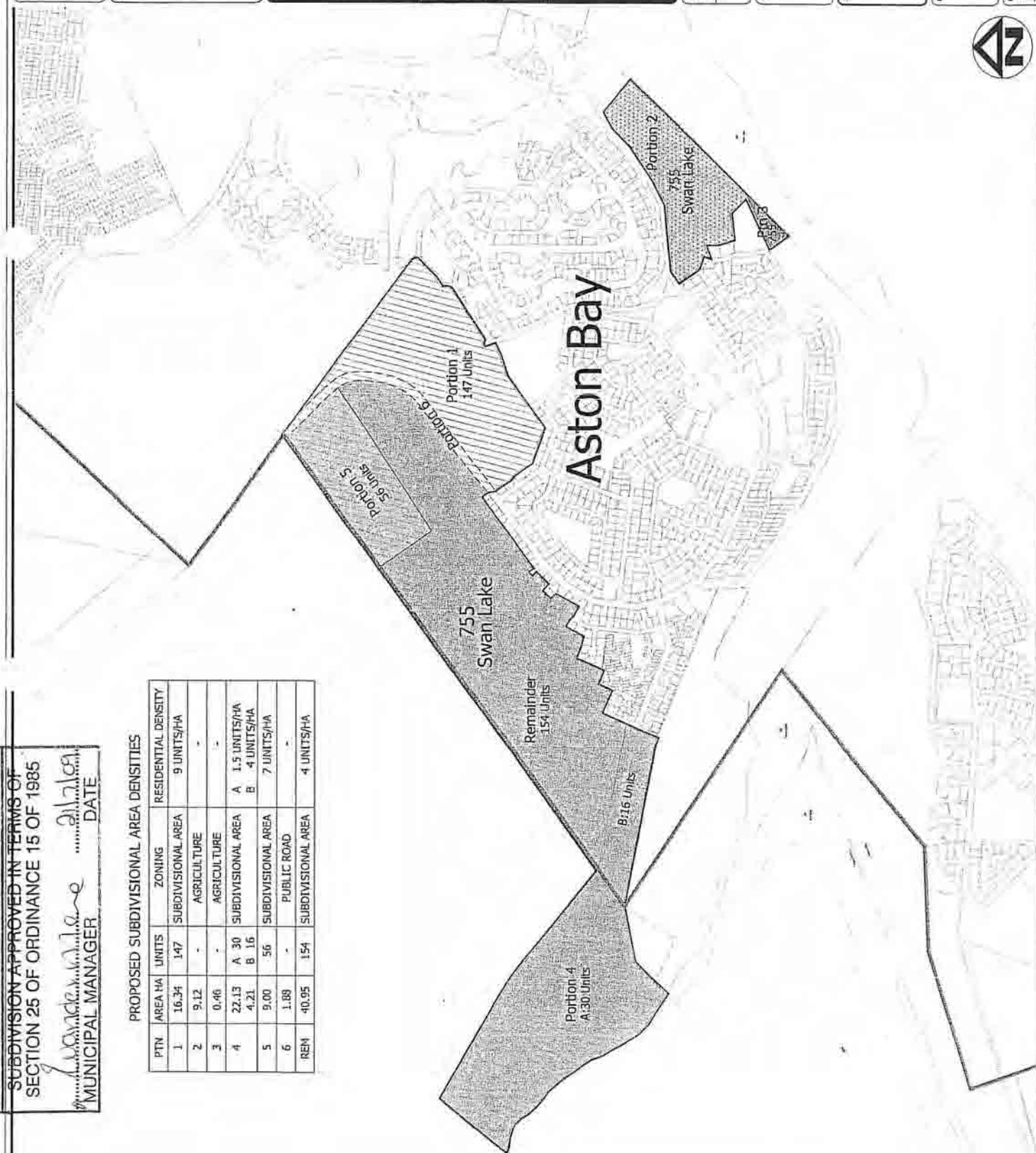
PORTION	AREA (ha)	ZONING
1	16.34	Subdivisional area
2	9.12	Agriculture 1
3	0.46	Agriculture 1
4	26.34	Subdivisional area
5	9.0	Subdivisional area
6	1.88	Transport Zone II
Remainder	40.95	Subdivisional area

- iii) That the applications as mentioned in paragraphs (i) and (ii) above be approved subject to the following Section 42 conditions:
 - a) That the subdivision be in accordance with diagram Jef/4026/08 dated May 2009.
 - b) The applicant shall immediately after the Surveyor General approves the subdivision diagram, submit a copy of the diagrams to the Council.
 - c) That a detailed Site Development Plan (SDP) indicating all structures, entrances, services and an engineering report regarding the requirements for the provision of water, sewerage, electricity, stormwater and parking, be submitted to Council for approval.
 - d) That no deviation from the approved SDP be allowed or reflected within the building plans submitted for approval.
 - e) That a services agreement with regard to bulk services fees be entered into with Council and signed by all parties and that all bulk services fees be paid in full prior to the submission of building plans.

- f) That bulk services fees payable be determined in accordance with the financial budget of the year in which it is paid;
- g) That the Section 8 Zoning Scheme Regulations be applicable.
- h) That the owner be responsible for the installation of electrical services according to the standard guidelines for electrification of townships as approved by Council;
- i) That the owner provides proper storm water drainage to comply with the requirements of the Council;
- j) That the owner be responsible for all cost (that may escalate) in respect of services, services connections and augmentation / services contribution fees as determined by the Council;
- k) That the various rates and levies to be paid by the owner/developer in future, be determined by the Council in terms of relevant legislation and policies as determined by the Council;
- l) That all engineering services comply with the requirements of the Council;
- m) That the applicant / developer comply with the conditions as stipulated by the Department of Roads;
- l) That the applicant / developer comply with the conditions as stipulated by the Department Economic Development & Environmental Affairs as contained in their Record of Decision no EC08/M/141-06 dated 30 March 2009;
- m) That the applicant / developer comply with the conditions as stipulated by the Department of Agriculture.
- n) That in the event of the Council requiring an electrical or any other services servitudes, the developer will accede to the registration of such servitude without compensation.

SUBDIVISION APPROVED IN TERMS OF
SECTION 25 OF ORDINANCE 15 OF 1985

PTN	AREA HA	UNITS	ZONING	RESIDENTIAL DENSITY
1	16.34	147	SUBDIVISIONAL AREA	9 UNITS/HA
2	9.12	-	AGRICULTURE	-
3	0.46	-	AGRICULTURE	-
4	22.13 4.21	A 30 B 16	SUBDIVISIONAL AREA	A 1.5 UNITS/HA B 4 UNITS/HA
5	9.01	56	SUBDIVISIONAL AREA	7 UNITS/HA
6	1.88	-	PUBLIC ROAD	-
REM	40.95	154	SUBDIVISIONAL AREA	4 UNITS/HA



drawing title	Proposed Subdivision & Subdivisional Area Density
drawing number	EF/4026/08
revision no.	2



Tel: 041-813 1755 (Direct)
Tel: 041-811 6000 (Switchboard)
Fax: 041-5852818
Cell: 082 652 5410
Email: buchanan@aerosat.co.za

R G BUCHANAN SC

The Club
12 Bird Street
Central
PORT ELIZABETH
6001

IN RE:

BUCHNER GROUP OF COMPANIES / KOUGA MUNICIPALITY

O P I N I O N

1. The Buchner Group of Companies applied for and were granted rezoning and subdivisional approvals in respect of the following developments:
 - 1.1. The Fountains Industrial Park.
 - 1.2. A retirement village.
 - 1.3. The Swan Lake Development.
2. During 2014 applications were made on behalf of the Buchner Group for the extension of the aforesaid zoning and subdivisional rights, in respect of all three developments, in terms of Section 16(1) of the Land

Use Planning Ordinance (LUPO), as read together with Section 22 of LUPO.

3. The Kouga Municipality granted such extensions in respect of all three developments.
4. Section 16(2) of LUPO is to the following effect:

"(2)(a) A rezoning in respect of which the application has been granted by virtue of the provisions of subsection (1) shall lapse –

(i) if the land concerned is not, within a period of two years after the date on which the application for rezoning was granted, utilised as permitted in terms of the zoning granted by the said rezoning;

(ii) where it has been so granted for the purposes of section 22, if a relevant application for subdivision in accordance with the rezoning concerned is not made in terms of Section 24 within a period of two years after the date on which the application for rezoning was granted; or

(iii) *where such application for subdivision was indeed so made, but the subdivision concerned or part thereof is not confirmed,*

Unless either the Administrator or, if authorised thereto by the provisions of the structure plan concerned the council extends the said period of two years, which extension may be granted at any stage."

5. The "lapsing" of a rezoning and subdivisional approval does not and cannot occur where the land concerned is *"utilised as permitted in terms of the zoning granted by the said rezoning"*.

6. In the **Wanhuiskrans** the High Court held as follows:

"[138] It follows that the mere intention on the part of the owner to conduct a particular activity on any land, or to use it for any purpose, is incapable of constituting the use thereof for the purposes of its zoning. It is only when the intention manifests in some outwardly visible manifestation on the property that one can determine what it is being used for."

7. *Prima facie* it seems to me that the aforesaid test is perhaps overstated.

8. In the ***Waenhuiskrans*** case the Court relied upon the earlier decision by Thring J in ***Hangklip Environmental Action Group v MEC Environmental Affairs*** 2007(6) SA 65 (C) at 72. That case was however concerned, not with Section 16 of LUPO but with Section 14 thereof and also the Court in that case had regard to the definition of a utilisation in Section 1 of LUPO which is to the following effect:

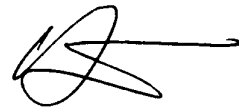
" 'Utilisation', in relation to land, means the use of land for a purpose or the improvement of land, and 'utilise' has a corresponding meaning."

9. It would seem therefore that what is envisaged is that the land must be *"used"* for a purpose or the improvement thereof.
10. With respect it does not seem to me that *"improvements"* can or should be limited to some *"outwardly visible manifestation on the property"*.
11. The improvement of property can surely and should surely include steps taken to enhance the value of the land and to take advantage of the rezoning and subdivision, for example, by the approval of subdivisional plans and diagrams, the approval of bulk services, the obtaining of environmental authorisations and the like.
12. In the present instance I have been advised that, in respect of all three developments, significant and important steps had been taken in order

to facilitate the actual and eventual construction of buildings on the respective sites.

13. Thus, for example, general plans have been approved, servitudes granted in favour of the Municipality in certain cases (albeit that such servitudes are still to be registered) and, in respect of the industrial park, a reservoir has been built and sewerage connections have been established.
14. Furthermore important and far reaching environmental authorisations have been obtained by way of the granting of appropriate Records of Decisions (ROD's) having regard to the nature of the developments ultimately to be erected on the relevant sites. This is particularly the case with regard to Swan Lake where sensitive areas are clearly demarcated and excluded from development in accordance with the ROD which has been obtained in respect of that particular site. In respect of Swan Lake a section of the property has been sold off to a third party and transfer has been effected.
15. With regard to the retirement village I have also been advised that servitudes in favour of the Municipality have been approved and bulk services are available.

16. The overall purpose of providing for the lapse in the "*lapsing*" of rezonings and subdivisions where land is not "*utilised*" within the defined period seems clear.
17. Municipalities do not wish developers simply to obtain approvals and then to take no steps to develop the properties.
18. The actual development and "*utilisation*" of properties in respect of which rezoning and subdivisions have been approved is however, almost inevitably, a process which takes time and certainly usually longer than two years.
19. In my view it could never have been the intention of the legislature to provide for a "*lapsing*" when the developer has taken significant, important, and costly steps to facilitate the ultimate conclusion of the development, albeit that buildings may not yet be erected on site. After all the actual erection of buildings, offices, shops etc is inevitably dependent upon market forces prevailing at any particular time.
20. Having regard to what is set out above, I am of the view that sufficient "*utilisation*" of the properties has occurred to prevent any "*lapsing*" of approvals already granted.



R G BUCHANAN, S C

**Chambers
Port Elizabeth
19th August 2016**

No: evb/R1/335

20 September 2016

C.W. Malan Attorneys
15 Oosterland Street
JEFFREYS BAY
6330

ATTENTION : MR. GJ DE SWARDT

Sir

BUCHNER PROPERTY INVESTMENTS GARDEN ROUTE (PTY) LTD
REZONING RIGHTS IN RESPECT OF PROPERTIES IN THE FOUNTAINS DEVELOPMENT AND
ASTON BAY AREA

Your letter dated 15th September 2016 herewith bears reference.

Herewith confirmation of agreement with the views expressed in the Opinion of Advocate Buchanan SC regarding the validity of the development rights on the abovementioned properties.

Yours Faithfully




V. FELTON

DIRECTOR: INFRASTRUCTURE, PLANNING & DEVELOPMENT

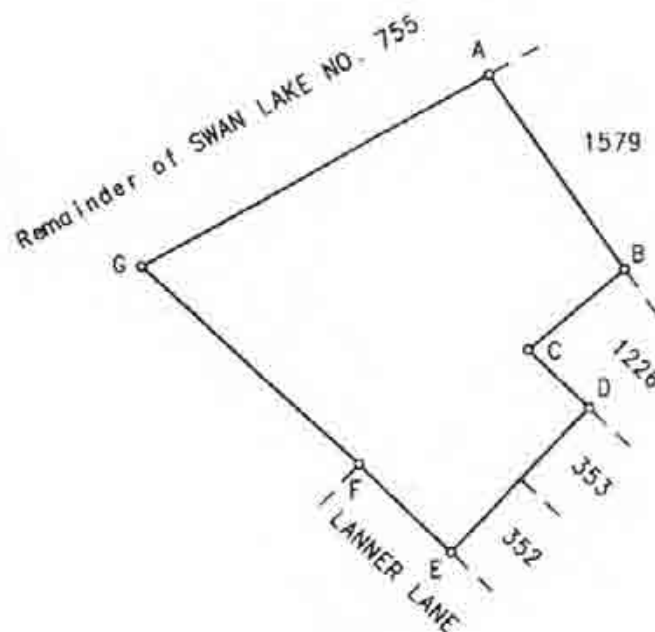
Refer: Elsa van Biljon 042-200 8502

E-mail address: evbiljon@kouga.gov.za

SIDES Metres		ANGLES OF DIRECTION	CO-ORDINATES Y System WG 25 X			S.G. No.
		Constant		+0.00	+3700000.00	5146/2009
AB	48.18	325 33 00	A	+8953.67	+72144.30	Approved 
BC	25.53	50 08 10	B	+8926.41	+72184.03	
CD	17.00	313 53 50	C	+8946.01	+72200.39	Surveyor-General 2009.11.24
DE	40.68	43 54 00	D	+8933.76	+72212.18	
EF	25.70	133 49 40	E	+8961.97	+72241.50	
FG	59.59	132 32 40	F	+8980.51	+72223.69	
GA	80.83	241 04 00	G	+9024.41	+72183.40	
		(95) JEFB	⊠	+7942.74	+72762.56	
		10BB9	⊕	+8566.41	+71996.12	

BEACONS:

12mm iron peg: All Beacons





Scale 1:1500

The figure A B C D E F G
represents 4822 square metres of land, being
ERF 1580 ASTON BAY

situate in the Kouga Municipality
Administrative District of Humansdorp.
Province of Eastern Cape

Surveyed in August to September 2009 by us.

 
D.E. Lategan (PLS 1168-D) J. DuT. Bester (PLS 1056-D)
Professional Land Surveyors

This diagram is annexed to

The original diagram is

File No. **Humd. 755**

No.
dated
i.f.o.

No. 11149/1971 annexed to
Transfer/Grant
No. 24003/1972
(FARM No. 755)

S.R. No. **2126/2009**
Camp AN-2BD/W21 (6272)
AN-2BD (3627)


Registrar of Deeds

LPI C0340002

Erf 1580 Aston Bay

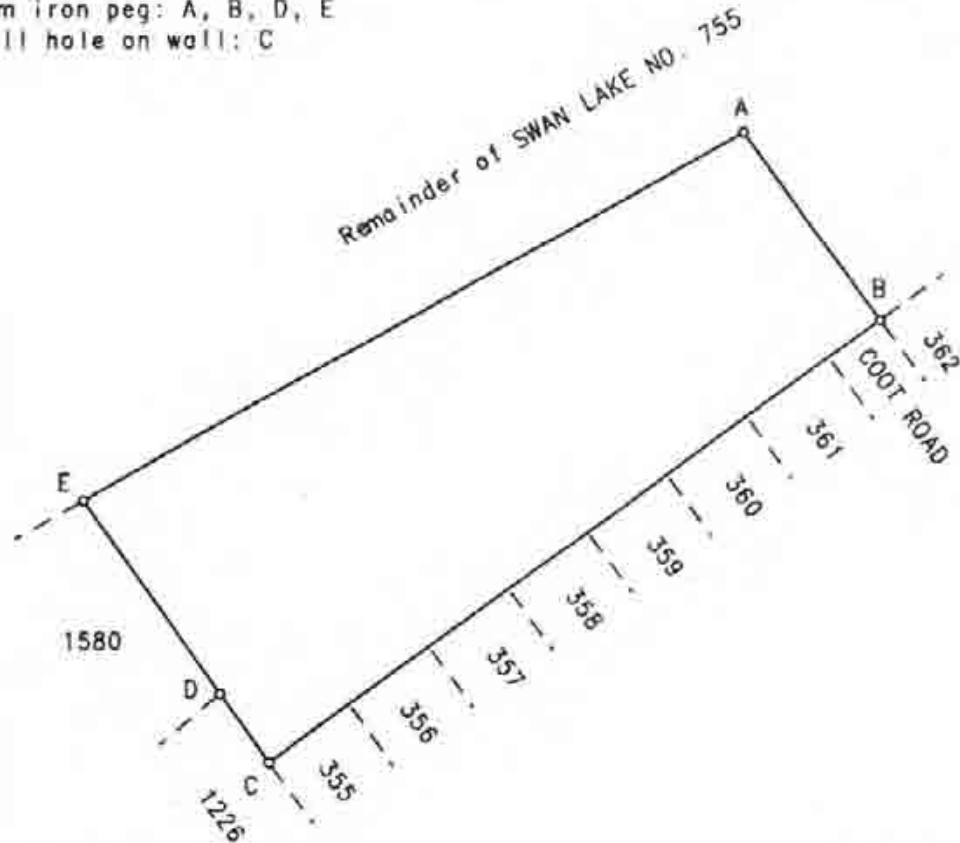
EXEMPT FROM PROVISIONS OF ACT
75 OF 1976
SECTION 1 (a)

APPROVED IN TERMS OF SECT. 25
OF ORD. 15/1985
REF. **EVDM/sg/RTSS**
DATE **2009-09-17**

	SIDES Metres	ANGLES OF DIRECTION	CO-ORDINATES			S.G. No.
			Y	System	WG 25 X	
		Constant		+0,00	+3700000,00	5145/2009
AB	47,18	324 17 00	A	+8819,25	+72070,00	Approved  F. Surveijor-General 2009.11.24
BC	153,62	54 20 20	B	+8791,71	+72108,30	
CD	17,00	144 26 00	C	+8916,52	+72197,86	
DE	48,18	145 33 00	D	+8926,41	+72184,03	
EA	153,58	241 04 00	E	+8953,67	+72144,30	
		(95) JEFB	Δ	+7942,74	+72762,56	
		10BB9	⊕	+8566,41	+71996,12	


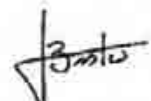
BEACONS:

12mm iron peg: A, B, D, E
Drill hole on wall: C



Scale 1:1500

The figure A B C D E
represents 8611 square metres of land, being
ERF 1579 ASTON BAY
situate in the Kouga Municipality
Administrative District of Humansdorp.
Province of Eastern Cape
Surveyed in August to September 2009 by us.

 
D.E. Lategon (PLS 1168-D) J. DuT. Bester (PLS 1056-D)
Professional Land Surveyors

This diagram is annexed to

No.
dated
i.f.o.

Registrar of Deeds

The original diagram is

No. 11149/1971 annexed to
Transfer/Grant
No. 24003/1972
(FARM No. 755)

File No. Humd. 755

S.R. No. 2126/2009

Comp AN-2BD/W21(6272)
AN-2BD(3627)

LPI C0340002

Erf 1579 Aston Bay

EXEMPT FROM PROVISIONS OF ACT

70 OF 1970

SECTION 1(3)

APPROVED IN TERMS OF SECT. 25

OF ORD. 15/1985

REF EVDOM/sg/18755

DATE 2009-09-17

	SIDES Metres	ANGLES OF DIRECTION	CO-ORDINATES		
			Y System	WG 25	X
		Constant		+0,00	+3700000,00
AB	162,71	44 37 50	A	+7833,63	+72820,71
BC	57,11	144 08 50	B	+7947,94	+72936,50
CA	163,29	244 48 40	C	+7981,39	+72890,21
		(95) JEFB	Δ	+7942,74	+72762,56
		10889	⊕	+8566,41	+71996,12

S.G. No.

5144/2009

Approved

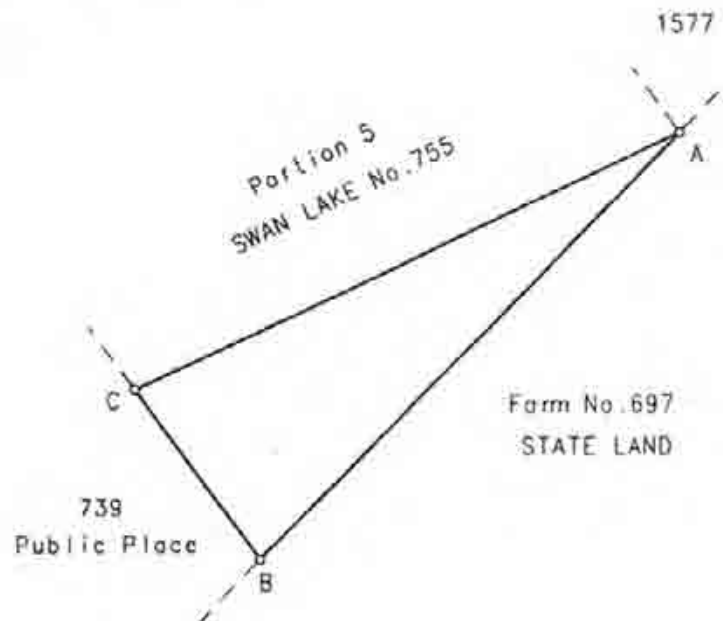


F. Surveyor-General

2009.11.24



BEACONS:

12mm iron peg: A, B, C



Scale 1:2000

The figure A B C
represents 4582 square metres of land, being
ERF 1578 ASTON BAY
situate in the Kouga Municipality
Administrative District of Humansdorp,
Province of Eastern Cape.
Surveyed in August to September 2009 by us.

 
D.E. Lategan (PLS 1168-D) J. DuT. Bester (PLS 1056-D)
Professional Land Surveyors

This diagram is annexed to

No.
dated
i.f.o.

Registrar of Deeds

The original diagram is

No. 11149/1971 annexed to
Transfer/Grant
No. 24003/1972
(FARM No. 755)

File No. Humd 755

S.R. No. SR 2126/2009

Comp AN-2BD(3627)
AN-2BD/W24(6274)

Boundary AB is
lawfully established.
LPI C0340002

EXEMPT FROM PROVISIONS OF ACT

70 OF 1970

SECTION 1(a)

APPROVED IN TERMS OF SECT. 21

OF ORD. 15/1995

REF. EYDM | 59 | R755

DATE 2009-07-21

MAARSCHALK & PARTNERS INC. Humansdorp

	SIDES Metres	ANGLES OF DIRECTION	CO-ORDINATES			S.G. No. 5143/2009 Approved <i>[Signature]</i> f Surveyor-General 2009.11.24 SHEET 1 OF 2 SHEETS
			Y	System	WG 25 X	
		Constant		+0.00	+3700000.00	
AB	116,70	308 58 20	A	+7591,42	+72409,85	
BC	474,06	44 36 50	B	+7500,69	+72483,25	
CD	67,84	134 37 50	C	+7833,63	+72820,71	
DE	77,00	83 30 20	D	+7881,91	+72773,05	
EF	43,67	161 20 40	E	+7958,42	+72781,76	
FG	42,73	181 18 00	F	+7972,39	+72740,38	
GH	40,00	69 30 00	G	+7971,42	+72697,66	
HJ	4,11	197 06 50	H	+8008,89	+72711,67	
JK	12,72	199 31 00	J	+8007,68	+72707,74	
KL	42,92	109 30 10	K	+8003,43	+72695,75	
LM	64,92	144 20 50	L	+8043,89	+72681,42	
MN	37,45	234 20 40	M	+8081,73	+72628,67	
NP	192,86	264 17 20	N	+8051,30	+72606,84	
PQ	81,85	243 17 30	P	+7859,40	+72587,65	
QR	44,13	237 26 10	Q	+7786,28	+72550,86	
RS	70,17	236 04 40	R	+7749,09	+72527,11	
ST	75,59	225 49 50	S	+7690,86	+72487,95	
TA	51,88	240 38 50	T	+7636,64	+72435,28	
		(95) JEFB	Δ	+7942,74	+72762,56	
		10BB9	⊕	+8566,41	+71996,12	

The figure A B C D E F G H J K L M N P Q R S T
represents 9.0883 hectares of land, being

ERF 1577 ASTON BAY

situate in the Kouga Municipality

Administrative District of Humansdorp.

Province of Eastern Cape

Surveyed in August to September 2009 by us.

[Signature]

[Signature]

D.E. Lategan (PLS 1168-D) J. DuT. Bester (PLS 1056-D)
Professional Land Surveyors

This diagram is annexed to

No.
dated
i.f.o.

Registrar of Deeds

The original diagram is

No. 11149/1971 annexed to
Transfer/Grant
No. 24003/1972
(FARM No. 755)

File No. Humd.755

S.R. No. 2126/2009

Comp AN-2BD(3627)
AN-2BD/W22(6273)
AN-2BD/W24(6274)

Boundary BC is
lawfully established.

EXEMPT FROM PROVISIONS OF ACT
70 OF 1970

SECTION 1(a)

APPROVED IN TERMS OF SECT. 25
OF ORD. 15/1985

REF. E.VDM | SG | R755

DATE 2009-07-21

ERF 1576 ASTON BAY

situate in the Kouga Municipality
Administrative District of Humansdorp.
Province of Eastern Cape.

S.G. No.

5142/2009

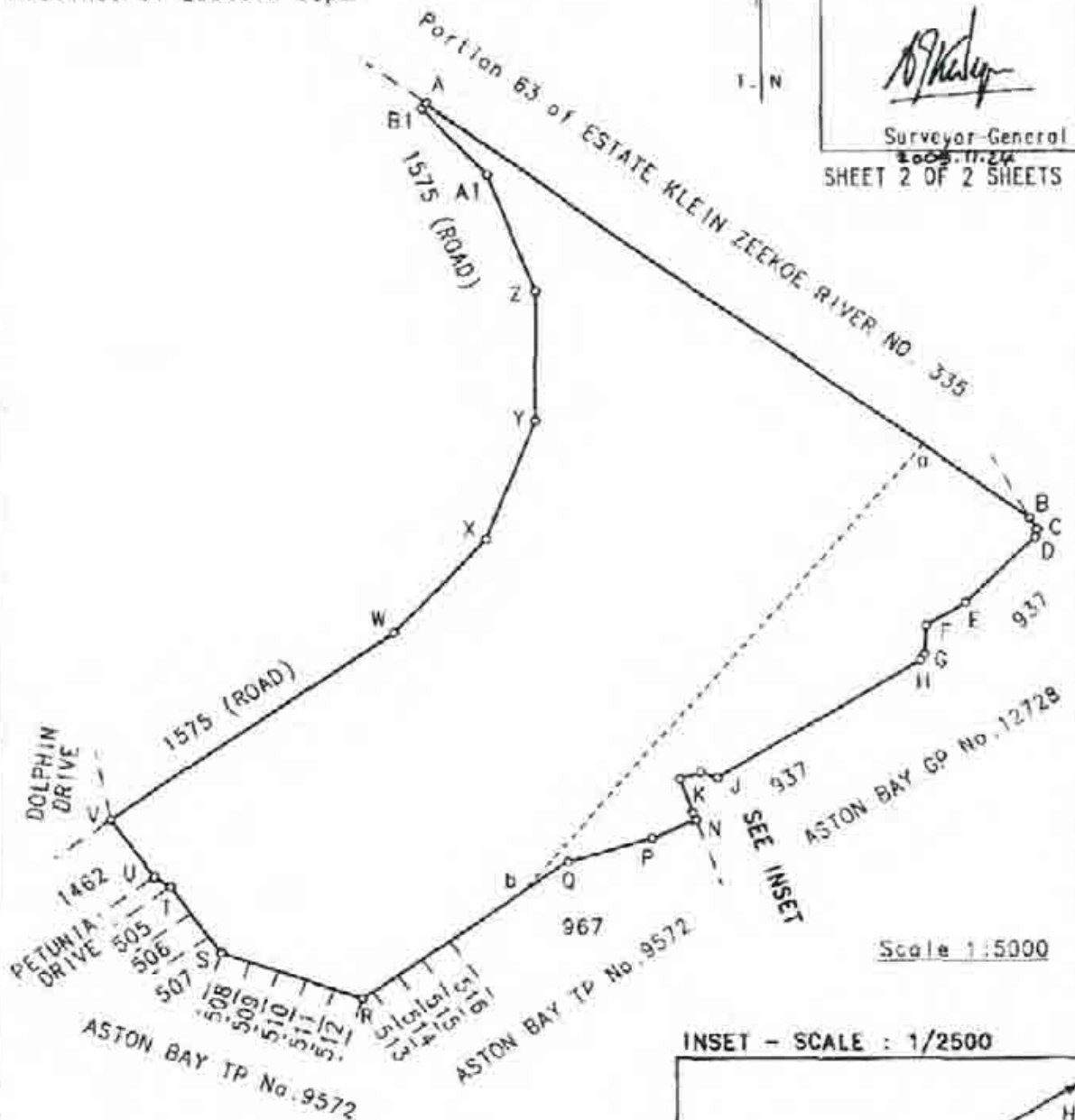
Approved



Surveyor-General

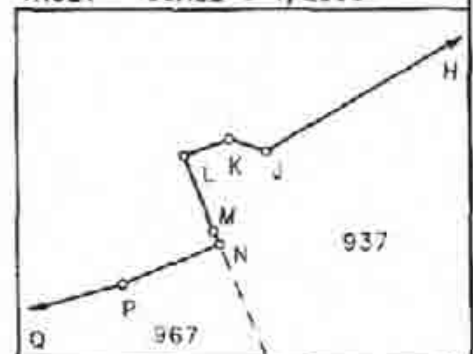
2009.11.24

SHEET 2 OF 2 SHEETS


BEACONS:

Drill hole on wall: R, U, Y

12mm iron peg: All other Beacons

INSET - SCALE : 1/2500

Surveyed in August to September 2009 by us.

D.E. Lategan (PLS 1168-D) J. DuT. Bester (PLS 1056-D)
Professional Land Surveyors

Erf 1576 Aston Bay

SIDES Metres	ANGLES OF DIRECTION	CO-ORDINATES			S.O. No.
		Y	System	WG 25	
	Constant			+0.00	+3700000.00
AB	537.15	305 49 50	A	+8460.98	+71546.39
BC	10.23	329 18 00	B	+8025.48	+71860.84
CD	4.72	7 25 30	C	+8020.26	+71869.64
DE	72.67	45 32 10	D	+8020.87	+71874.32
EF	33.29	57 15 50	E	+8072.73	+71925.22
FG	22.08	4 34 20	F	+8100.73	+71943.22
GH	5.35	31 24 20	G	+8102.49	+71985.23
HJ	173.07	58 26 40	H	+8105.28	+71989.80
JK	12.67	109 07 20	J	+8252.76	+72060.37
KL	16.01	69 47 20	K	+8264.73	+72056.22
LM	27.92	339 46 50	L	+8279.75	+72061.75
MN	5.00	336 03 00	M	+8270.10	+72087.95
NP	34.99	66 02 30	N	+8268.07	+72092.52
PQ	63.27	73 44 10	P	+8300.05	+72106.73
QR	181.74	54 20 50	Q	+8360.79	+72124.45
RS	107.93	109 14 50	R	+8508.47	+72230.38
ST	62.02	144 21 00	S	+8610.37	+72194.80
TU	13.93	123 18 50	T	+8645.52	+72144.40
UV	54.00	144 21 10	U	+8658.16	+72136.75
VW	249.79	235 02 20	V	+8689.63	+72092.87
WX	97.79	222 40 00	W	+8484.92	+71949.74
XY	97.11	201 29 10	X	+8418.64	+71877.63
YZ	100.17	180 18 30	Y	+8383.07	+71767.47
ZA1	94.01	158 26 00	Z	+8382.53	+71687.30
A1B1	68.08	136 33 30	A1	+8417.09	+71599.87
B1A	5.00	215 49 50	B1	+8463.90	+71550.44
	(95) JEFB	Δ		+7942.74	+72762.56
	10BB9	⊕		+8566.41	+71996.12

5142/2009

Approved

F. Surveyor-General

SHEET 1 OF 2 SHEETS

The figure A B C D E F G H J K L M N P Q R S T U V W X Y Z A1 B1 represents 17,1405 hectares of land, being

ERF 1576 ASTON BAY

situate in the Kouga Municipality
Administrative District of Humansdorp
Province of Eastern Cape

Surveyed in August to September 2009 by us.

D.E. Lategan (PLS 1168-D) J. DuT. Bester (PLS 1056-D)
Professional Land Surveyors

This diagram is annexed to

No. T40097/10
dated
i.f.o.

Registrar of Deeds

The original diagram is

No. 11149/1971 annexed to
Transfer/Grant
No. 24003/1972
(FARM No.755)

File No. Humd.755

S.R. No. 2126/2009

Comp AN-2BD(3527)
AN-2BD/W21(6272)

LPI C0340002

Erf 1576 Aston Bay

EXEMPT FROM PROVISIONS OF ACT

70 OF 1970

SECTION

(3)

APPROVED IN TERMS OF SECT. 25

OF ORC. 15/1985

REF. EVD/SG/18755

DATE 2009-07-21

ERF 1575 (ROAD) ASTON BAY

situate in the Kouga Municipality
Administrative District of Humansdorp.
Province of Eastern Cape

S.G. No.

5141/2009

Approved

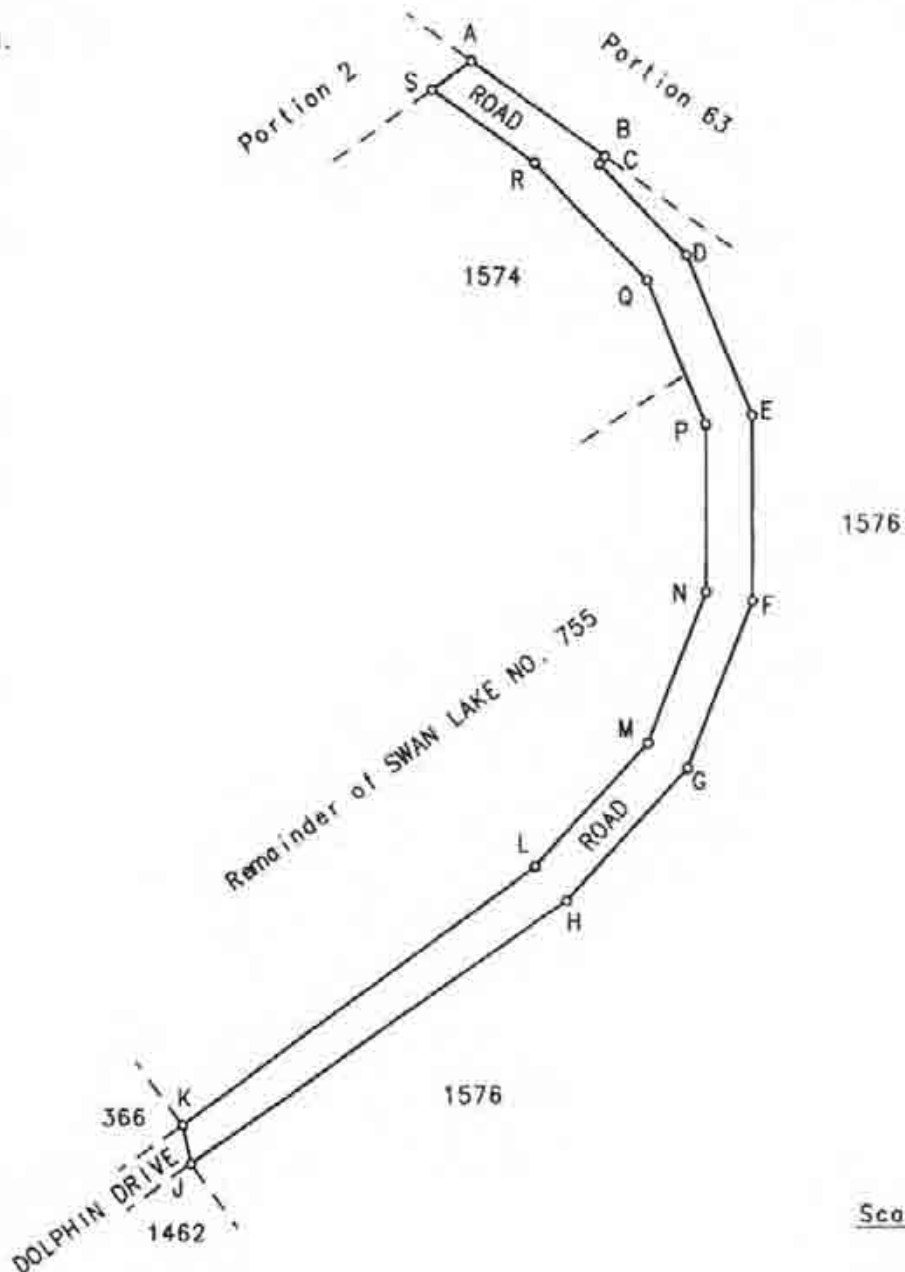


Surveyor-General

2009.11.12
SHEET 2 OF 2 SHEETS

ESTATE KLEIN ZEEKOE RIVER NO. 335

T. N.



Scale 1:4000

Surveyed in August to September 2009 by us.




D.E. Lategan (PLS 1168-D)



J. DuT. Bester (PLS 1056-D)

Professional Land Surveyors

MAARSCHALK & PARTNERS INC. Humansdorp

SIDES Metres		ANGLES OF DIRECTION	CO-ORDINATES Y System WG 25 X			S.G. No.
		Constant		+0,00	+3700000,00	5141/2009
AB	88,73	305 49 50	A	+8532,91	+71494,45	Approved  F. Surveyor-General
BC	5,00	35 49 50	B	+8460,98	+71546,39	
CD	68,08	316 33 30	C	+8463,90	+71550,44	SHEET 1 OF 2 SHEETS
DE	94,01	338 26 00	D	+8417,09	+71599,87	
EF	100,17	0 18 30	E	+8382,53	+71687,30	
FG	97,11	21 29 10	F	+8383,07	+71787,47	
GH	97,79	42 40 00	G	+8418,64	+71877,83	
HJ	249,79	55 02 20	H	+8484,92	+71949,74	
JK	21,94	168 33 40	J	+8689,63	+72092,87	
KL	238,11	233 52 40	K	+8693,98	+72071,37	
LM	90,67	222 40 00	L	+8501,64	+71931,00	
MN	87,76	201 29 10	M	+8440,19	+71864,33	
NP	90,67	180 18 30	N	+8408,04	+71782,66	
PQ	84,34	158 26 00	P	+8407,56	+71691,99	
QR	87,77	136 33 30	Q	+8438,56	+71613,56	
RS	68,36	125 49 50	R	+8498,91	+71549,83	
SA	26,36	234 20 50	S	+8554,34	+71509,82	
		(95) JEFB	Δ	+7942,74	+72762,56	
		10BB9	⊕	+8566,41	+71996,12	

BEACONS:

20mm iron peg: A

Drill hole on wall: J

12mm iron peg: All other Beacons

The figure A B C D E F G H J K L M N P Q R S
represents 1,8752 hectares of land, being


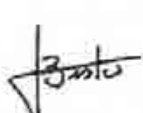
ERF 1575 (ROAD) ASTON BAY

situate in the Kouga Municipality

Administrative District of Humansdorp.

Province of Eastern Cape

Surveyed in August to September 2009 by us.

 
D.E. Lategan (PLS 1168-D) J. DuT. Bester (PLS 1056-D)
Professional Land Surveyors

This diagram is annexed to

No.
dated
i.f.o.

Registrar of Deeds

The original diagram is

No. 11149/1971 annexed to
Transfer/Grant
No. 24003/1972
(FARM No.755)

File No. Humd.755

S.R. No. 2126/2009

Camp AN-28D(3627)
AN-28D/W21(6272)

LPI C0340002

Erft 1575 Aston Bay

EXEMPT FROM PROVISIONS OF ACT

70 OF 1970

SECTION 1(CA)

APPROVED IN TERMS OF SECT 25

OF ORIO 15/1975

REF. EVDm/sg/18755

DATE 2009-07-21

MAARSCHALK & PARTNERS INC. Humansdorp

	SIDES Metres	ANGLES OF DIRECTION	CO-ORDINATES		
			Y System	WG 25	X
		Constant		+0,00	+3700000,00
AB	68,36	305 49 50	A	+8554,34	+71509,82
BC	87,77	316 33 30	B	+8498,91	+71549,83
CD	55,35	338 26 00	C	+8438,56	+71613,56
DE	465,18	57 08 40	D	+8418,22	+71555,03
EF	182,76	144 12 30	E	+8808,99	+71917,41
FA	444,94	234 20 50	F	+8915,87	+71769,16
		(95) JEFB	Δ	+7942,74	+72762,56
		10BB9	⊕	+8566,41	+71996,12

S.G. No.

5140/2009

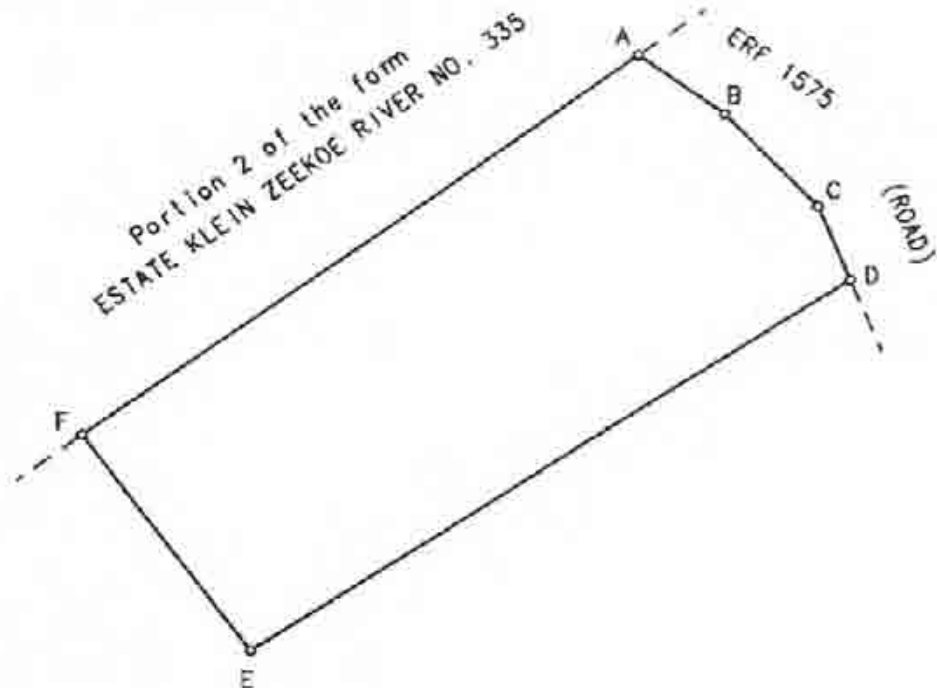
Approved

F. Surveyor-General

2009.11.24

REACONS:

12mm iron peg: A, B, C, D, E, F



Remainder of SWAN LAKE NO. 755

Scale 1:5000

The figure A B C D E F
represents 9,0644 hectares of land, being
ERF 1574 ASTON BAY

situate in the Kouga Municipality
Administrative District of Humansdorp,
Province of Eastern Cape

Surveyed in August to September 2009 by us.

D.E. Lategan (PLS 1168-D) J. DuT. Bester (PLS 1056-D)
Professional Land Surveyors

This diagram is annexed to

No. T40099/10
dated
i.f.o.

Registrar of Deeds

The original diagram is

No. 11149/1971 annexed to
Transfer/Grant
No. 24003/1972
(FARM No. 755)

File No. Humd.755

S.R. No. 2126/2009

Camp AN-280(3627) ✓

LPI C0340002

Erf 1574 Aston Bay

EXEMPT FROM PROVISIONS OF ACT

70 OF 1970


SECTION 1(a)

APPROVED IN TERMS OF SECTION 35

OF ORD. 12/1983

REF. EVDM/59/8755

DATE 2009-07-21

SIDES Metres		ANGLES OF DIRECTION	CO-ORDINATES Y System WG 25 X			S.G. No.
		Constant	+0,00 +3700000,00			5139/2009
AB	397,31	299 10 50	A	+10444,22	+71949,80	Approved  Surveyor-General 2009.11.24 SHEET 1 OF 2 SHEETS
BC	398,90	308 53 30	B	+10097,33	+72143,52	
CD	427,35	280 57 10	C	+9786,85	+72393,96	
DE	40,30	23 30 00	D	+9387,28	+72475,18	
EF	1,16	112 07 30	E	+9383,35	+72512,12	
FG	57,01	22 07 30	F	+9384,42	+72511,68	
GH	19,84	112 18 10	G	+9405,89	+72564,49	
HJ	473,45	100 55 10	H	+9424,24	+72556,96	
JK	164,39	78 24 50	J	+9889,12	+72467,28	
KL	47,34	44 55 00	K	+10050,16	+72500,29	
LM	659,93	138 29 40	L	+10083,58	+72533,81	
MA	118,10	220 30 00	M	+10520,92	+72039,61	
LI		44 55 00				
MA		40 30 00				
		(95) JEFB	Δ	+7942,74	+72762,56	
		10889	⊕	+8566,41	+71996,12	

BEACONS:


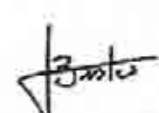
Fence post: A
 20mm iron peg: B, C, H, K, L, M
 12mm iron peg: D, F, G
 Drill hole on wall: E
 Planted stone: J

The figure A B C D E F G H J K I middle of Klein Zeekoe River m
 represents 27,5004 hectares of land, being

ERF 1573 ASTON BAY

situate in the Kouga Municipality
 Administrative District of Humansdorp.
 Province of Eastern Cape

Surveyed in August to September 2009 by us.

 
 D.E. Lategan (PLS 1168-D) J. DuT. Bester (PLS 1056-D)
 Professional Land Surveyors

This diagram is annexed to

No. T40098/10
 dated
 i.f.o.

Registrar of Deeds

The original diagram is

No. 11149/1971 annexed to
 Transfer/Grant
 No. 24003/1972
 (FARM No.755)

File No. Humd.755

S.R. No. 2126/2009

Camp AN-2BD(3827)
 AN-2BD/W12(6271)

LPI C0340002

Erf 1573 Aston Bay

EXEMPT FROM PROVISIONS OF ACT
 70 OF 1970

SECTION 1 (a)

APPROVED IN TERMS OF SECT. 25
 OF ORD. 15/1985

REF. EVDM 59/R755

DATE 2009-01-21

11149/71

SYE Meter	RIGTINGS -HOEKE	KOÖRDINATE		
		Y	Stelsel Lo. 25°	X
	Konstante		0,0	+3 700 000,0
AB	1 446,4	A	+ 8 491,2	+ 71 201,2
BC	1 548,8	B	+ 7 318,6	+ 72 048,1
CD	1 173,7	C	+ 8 406,7	+ 73 150,3
DE	452,9	D	+ 9 378,4	+ 72 492,0
EF	89,8	E	+ 8 927,7	+ 72 536,0
FG	485,0	F	+ 8 933,4	+ 72 446,4
GH	473,5	G	+ 9 382,7	+ 72 263,8
HJ	164,4	H	+ 9 847,6	+ 72 174,1
JK	47,2	J	+10 008,8	+ 72 207,2
KL	659,9	K	+10 042,1	+ 72 240,6
LM	118,1	L	+10 479,4	+ 71 746,4
MN	397,3	M	+10 402,7	+ 71 656,6
NO	398,8	N	+10 055,8	+ 71 850,3
OA	1 543,4	O	+ 9 745,3	+ 72 100,7
Dd	304 06 55			
Ee	356 22 50			
Kk	44 55 04			
Ll	40 30 00			
	Jeffreysbaai A	95	+ 7 901,0	+ 72 469,3

- Figuur A a E F G H J k Middel van Klein Zeekoerivier
l M N O A synde die plaas ZEEKOERIVIERMOND Nr. 696
Kaart 3737/69 T/A 1970 . 336 . 16794
- Figuur a B C d hoogwatermerk linkeroewer Klein Zeekoerivier
e E a synde Gedeelte 54 van die plaas ESTATE KLEIN ZEEKOE
RIVER Nr. 335 Kaart 8206/68 T/A 1969 . 576 . 28792

Beskrywing van Bakens:-

- A, 19 mm. x 760 mm. Gegalvaniseerde ysterpyp
in klipstapel.
- B, 19 mm. x 1520 mm. Ysterpyp in sand.
- C, Swaar spoorstaaf wat 910 mm. uitsteek.
- E, F, G, J, K, 20 mm. Ronde ysterpen in klipstapel.
- L, M, N, O, 20 mm. Ronde ysterpen in klipstapel.
- H, Ingeplante klip ± 610 mm. hoog.

A B C d hoogwatermerk linkeroewer Klein Zeekoerivier

Die figuur e E F G H J k middel van Klein Zeekoerivier l M N O A

stel voor 258,3585 Hektaar

grond, synde

die plaas SWAN LAKE Nr. 755 en bevat die eiendomme soos hierbo aangehaal.

*gedeeltelik

geleë in die Munisipaliteit Jeffreysbaai en in die Administratiewe Distrik

HUMANSDORP

Provinsie Kaap die Goeie Hoop.

Opgemaak in Saamgestel in Mei 1971

deur my,

G. P. ...
Landmeter

Hierdie kaart is gehêg aan

SR 22003/72

No.
gedateer

t.g.v.

Die oorspronklike kaart is.

Soos hierbo aangehaal

No. — gehêg aan

Transport/Grondbrief

No.

Lêer No. S.14103/5

M.S. No. Saamgestel

Komp. AN - 2BD

SIEN KEESEY VIR

LANDSKAPTE

Bakens en grense

B. C. D. gevestig

Registrateur van Aktes

KANTOOR AFSKRIF

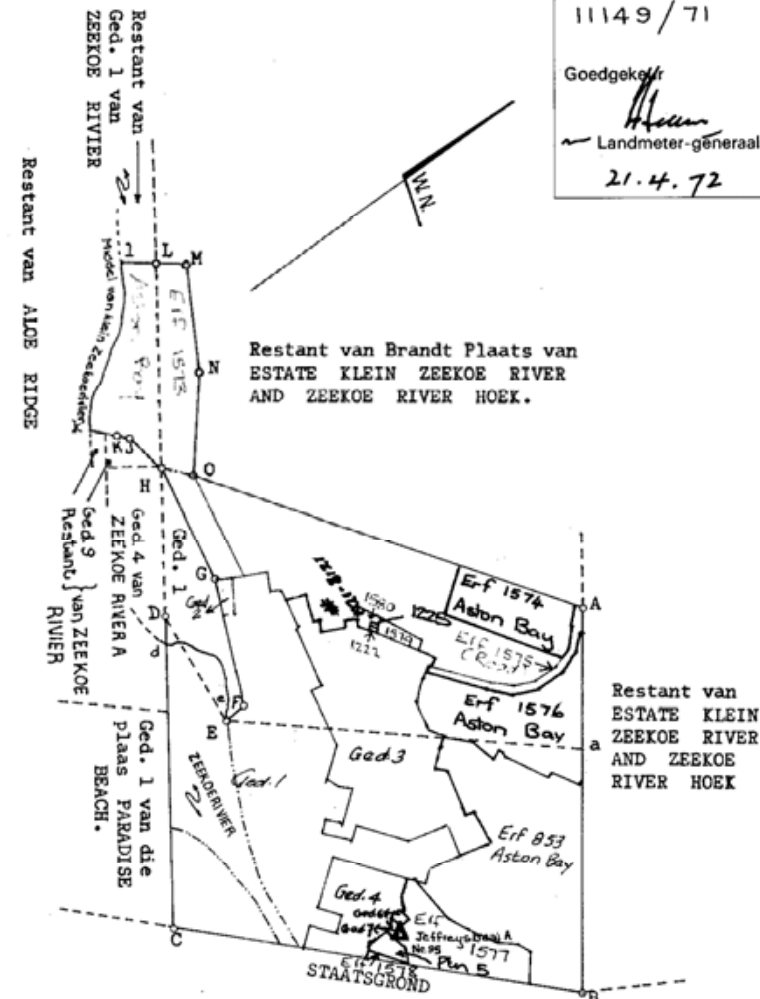
L.G. No.

11149/71

Goedgekeur

Landmeter-generaal

21.4.72



- * Die Figuur ABCd hoogwatermerk linkeroewer Klein Zeekoerivier
eEFGHO is geleë in die Munisipaliteit Jeffreysbaai.

Skaal: 1:20 000

DE HIERDIE KAART GEDOEN

010 11

MEET- STUKKE	KAA	ARTENO.	DEPAR- FEER	RESTART
E2869/71	6915/97	218 1218 1219 855	10755/00	M.B.
"	6916/97	1219		
"	6917/97	1220	10757/00	M.B.
"	6918/97	1221	10759/00	M.B.
E2870/71	206/1998	1222		
E2871/02	5083/02	1225	115259/03	M.B.
E2126/09	5139/09	Aston Bay		
"	5140/09	"	1574	
"	5141/09	"	1575	
"	5142/09	"	1576	
"	5143/09	"	1577	
"	5144/09	"	1578	
"	5145/09	"	1579	
"	5146/09	"	1580	

DIE VOLGENDE AFTREKKING IS VAN HIERDIE KAART GEDOEN.

MEET- STUKKE	KAA	ARTENO.	DEPAR- FEER	RESTART
E2869/71	11148/71	Ged. 1	74 1000	24004/72 H.B.
E2870/71	7734/75	Ged. 3	34, 0765	21880/76 7.2.24.
E2140/75	7735/75	" 2	74, 7483	21880/76 7.2.24.
"	7736/75	" 4	8, 1076	21880/76 7.2.24.
E2871/86	106/86	" 5	1, 1587	65224/1996 M.B.
"	107/86	" 6	1586	45012/88 B.K.
"	108/86	" 7	1738	72726/90 TR
E2839/89	8380/89	ERF 853 ASTON BAY	36, 5065 Ha	

CW MALAN JEFFREYS BAY INC
15 OOSTERLAND STREET
JEFFREYS BAY
6330

Prepared by me

CONVEYANCER
ADAM JACOBUS BOSHOF

DEED OF TRANSFER

BE IT HEREBY MADE KNOWN THAT

appeared before me, REGISTRAR OF DEEDS at KING WILLIAM'S TOWN, the said
appearer being duly authorised thereto by a Power of Attorney granted to him by

1. **The Trustees for the time being of
LORRAINE MARTHA PATERSON TRUST
Registration Number IT6553/1975**
2. **The Trustees for the time being of
G GLENNY BUCHNER TRUST
IT6554/1975**
3. **The Trustees for the time being of
G OSWALD BUCHNER TRUST
IT6555/1975**

which said Power of Attorney was signed at JOHANNESBURG on 22 February 2018.

And the appearer declared that his said principal had, on 7 June 2017, truly and legally sold by Private Treaty, and that he, the said Appearer, in his capacity aforesaid, did, by virtue of these presents, cede and transfer to and on behalf of:

ARCTISMART PROPRIETARY LIMITED
Registration Number 2017/087939/07

or its Successors in Title or assigns, in full and free property

REMAINDER OF FARM SWAN LAKE 755
IN THE AREA OF THE KOUGA MUNICIPALITY
DIVISION HUMANSDORP
PROVINCE EASTERN CAPE

IN EXTENT 39,4955 (THIRTY NINE COMMA FOUR NINE FIVE FIVE)
Hectares

FIRST TRANSFERRED by Certificate of Consolidated Title Number T24003/1972CTN with Diagram SG Number 11149/1971 relating thereto and HELD by Deed of Transfer Number T72727/1990CTN.

- A. In so far as concerns the land represented by the Remainder of the figure A a E F G H and the figure L M N O H on the said diagram Number 11149/1971:

SUBJECT to the conditions referred to in Deeds of Transfer Numbers T28793/1969CTN and T16793/1970CTN.

- B. In so far as concerns the land represented by the figure L H J K middle of the Klein Zeekoe River 1 on the said diagram Number 11149/1971:

SUBJECT to the conditions referred to in Deeds of Transfer Number T3114/1911CTN.

- C. In so far as concerns the land represented by the Remainder of the figure a B C d High Water Mark left bank of Klein Zeekoe River e E a on the said diagram Number 11149/1971:

SUBJECT to the conditions referred to in Certificate of Consolidated Title Number T24003/1972CTN.

- D. **SUBJECT** to a servitude right of way in terms of Notarial Deed Number K1235/2003CTN, which reads as follows:

“Die binnegemelde eiendom is onderhewig aan ‘n serwituut reg van weg; drie meter wyd, aangrensend aan die Noord Westelike kant van Erwe 352 en 354 plus ‘n vyftien meter wye strook, aangrensend aan die Suid Westelike kant van Erf 1226, soos aangedui deur die figuur AabL op die aangehegte Serwituut Diagram Nommer 5084/2002 ten gunste van Erf 1226 Aston Bay, in die Kouga Plaaslike Munisipalitet , Afdeling van Humansdorp, Provinsie Oos-Kaap, groot 930m² gehou kragtens Transportakte T115260/2003CTN.

Met verdere bykomende regte, soos meer volledig sal blyk uit die voormelde notariële akte.”

WHEREFORE the said Appearer, renouncing all rights and title which the said

1. **The Trustees for the time being of LORRAINE MARTHA PATERSON TRUST**
 Registration Number IT6553/1975
2. **The Trustees for the time being of G GLENNY BUCHNER TRUST**
 IT6554/1975
3. **The Trustees for the time being of G OSWALD BUCHNER TRUST**
 IT6555/1975

heretofore had to the premises, did in consequence also acknowledge them to be entirely dispossessed of, and disentitled to the same, and that by virtue of these presents, the said

ARCTISMART PROPRIETARY LIMITED
Registration Number 2017/087939/07

or its Successors in Title or assigns, now is and henceforth shall be entitled thereto, conformably to local custom, the State, however reserving its rights, and finally acknowledging the purchase price to be the sum of R1 754 385,96 (ONE MILLION SEVEN HUNDRED AND FIFTY FOUR THOUSAND THREE HUNDRED AND EIGHTY FIVE RAND AND NINETY SIX CENTS) .

IN WITNESS WHEREOF, I the said Registrar, together with the Appearer, have subscribed to these presents, and have caused the Seal of Office to be affixed thereto.

THUS DONE and EXECUTED at the Office of the REGISTRAR OF DEEDS at KING WILLIAM'S TOWN on

q.q.

In my presence

REGISTRAR OF DEEDS