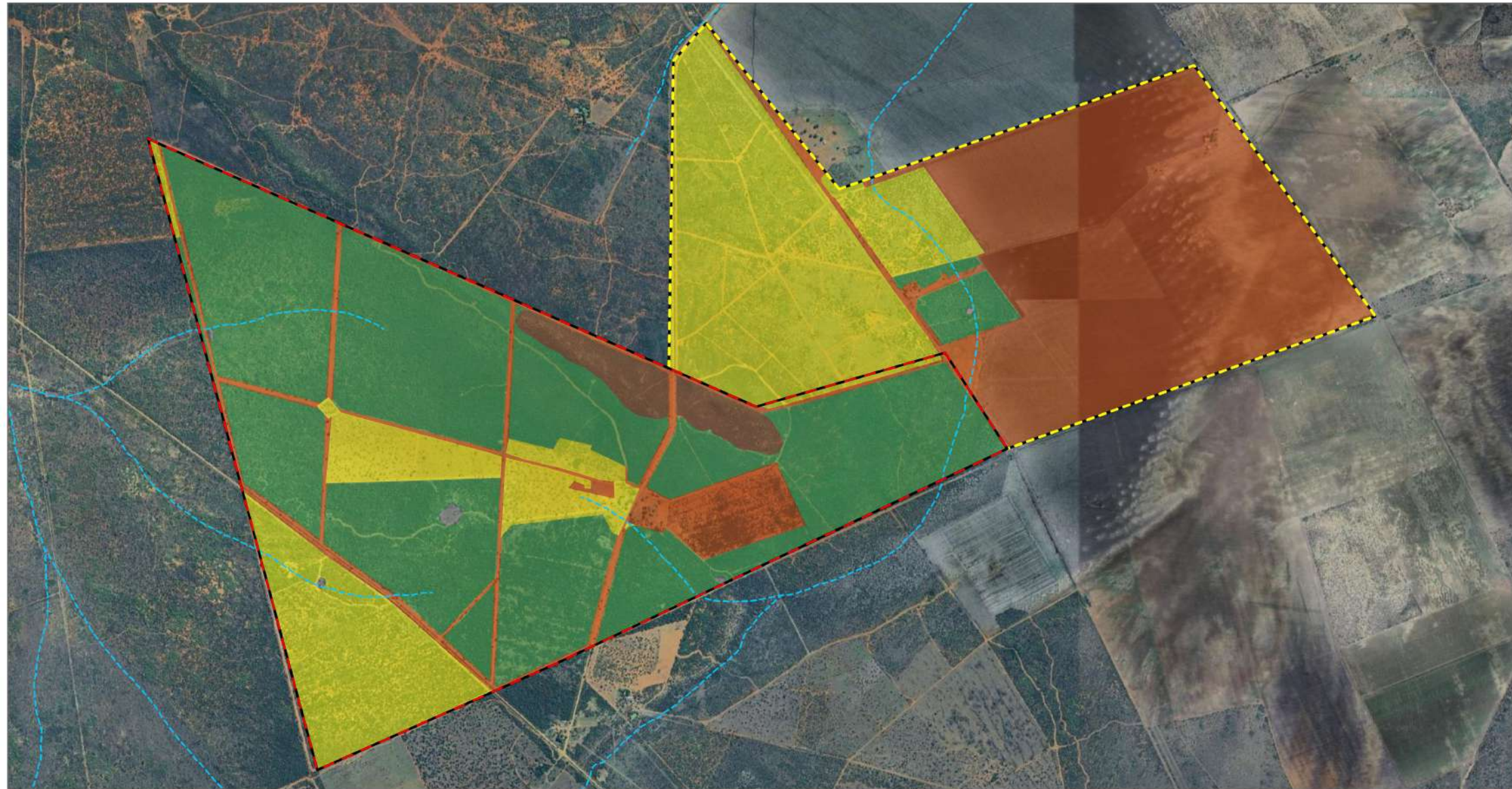


# Project : WKN Benya PV

## Layout - Terrestrial Biodiversity



### LEGEND

#### Benya PV and EGI (Oct 24)

- PV Site
- Grid Land Parcel
- Grid Land Parcel

#### LP Rivers (line)

- Non-Perennial River
- Centre line

#### Vegetation

- Degraded Thornveld

- Dwaalboom Thornveld
- Dwaalboom Thornveld (Rocky Hills)
- Transformed
- Wetland/Dam

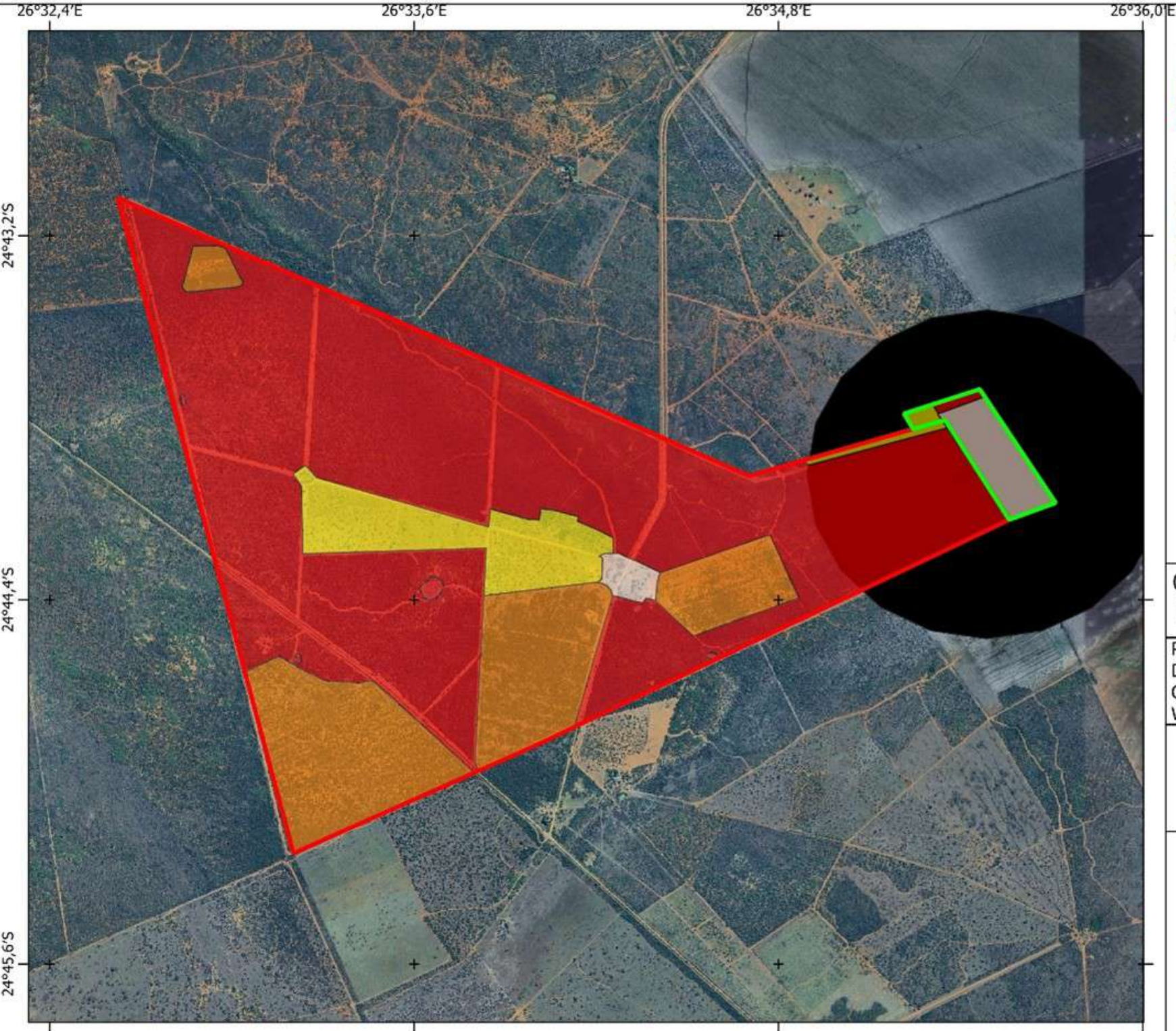
The information used was derived from digital databases and although we strive to provide the best data we can, we sometimes use data developed by sources outside our control. Therefore, we cannot accept any responsibility for any errors, omissions, or positional accuracy, and therefore, there are no warranties which accompany this product.

**Coordinate System: GCS WGS 1984**

0 0.97 1.95 Kilometers

Map by: Jamie Pote





26°32,4'E

26°33,6'E

26°34,8'E

26°36,0'E

24°43,2'S

24°44,4'S

24°45,6'S

**Legend**

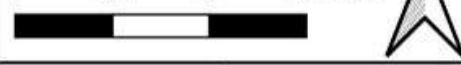
**Project Area**

-  LILO Corridor
-  Benya PV and EGI

**SEI**

-  High
-  Medium
-  Low
-  Very Low
-  Nest Buffer

0 0,4 0,8 1,2 km

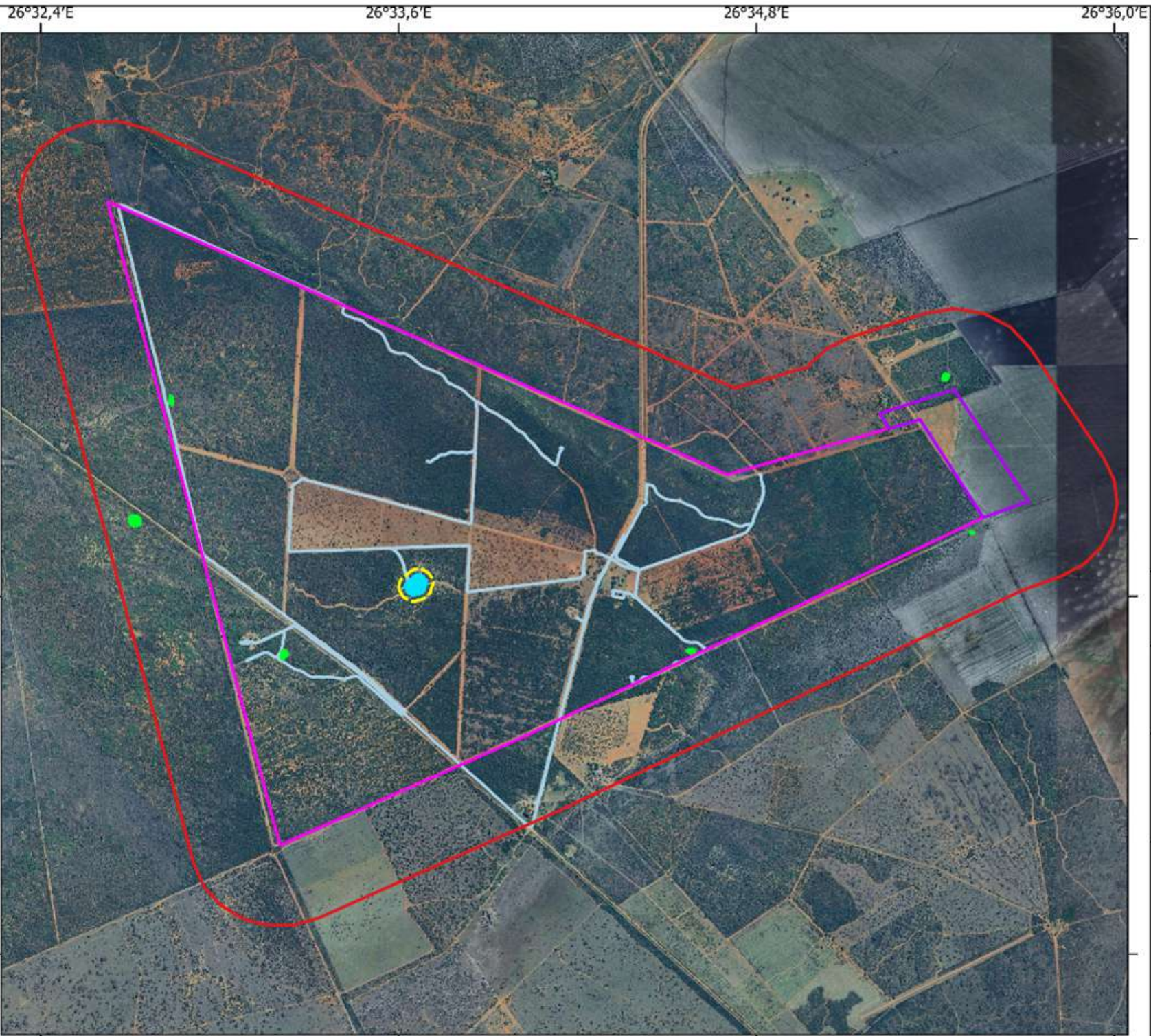


Project: Benya Solar PV  
Date: 13/02/2025  
Compiler: SF van Zwieten  
WGS 84 / UTM zone 35S



Provincial Context





### Legend


 PAOI

### Project area


 Grid

 PV area

### Delineations

 HGM 1 - Depression

 Dams

 32m Buffer

 Tracks

0 0,6 1,2 km



Project: Benya Solar PV Project

Date: 04/02/2025

Compiler: Khume Mtshweni

WGS 84 / UTM zone 35S



Limpopo Province

