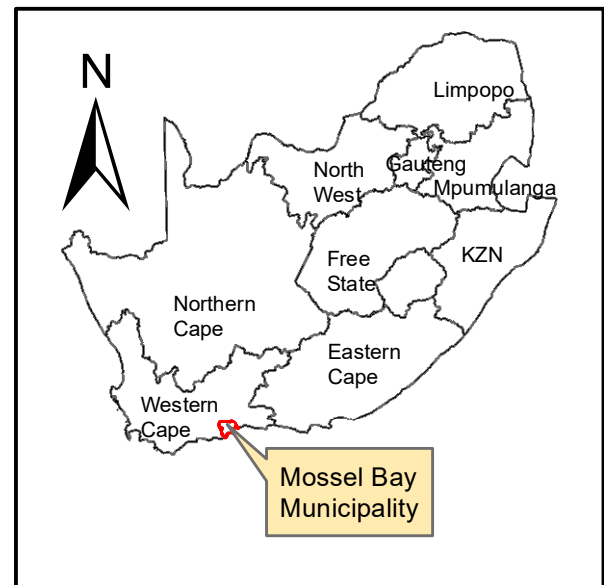




**Critical Biodiversity Areas (CBA)**

<b>CBA 1</b>	CBA: Terrestrial	<b>CBA 2</b>	CBA2: Terrestrial	<b>ESA 1</b>	ESA: Terrestrial	BSP_PA_MosselBay
CBA: Aquatic		CBA2: Aquatic		ESA: Aquatic		



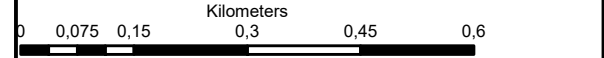
**Hartenbos Heuwels  
Erf 3122 Hartenbos**

**Legend**

- Erf\_3122
- Development Area
- Open Space
- Reservoir
- Urban Edge (2019)
- MAIN ROAD
- OTHER ACCESS
- SECONDARY ROAD
- Perennial Rivers
- Non-Perennial Rivers

**Notes**

- Map Scale is 1: 10 000 when printed on A3
- Aerial image courtesy of Google Earth Pro 2021
- Imagery date September 2020
- Biodiversity data courtesy of SANBI BGIS 2020 & WCBSP 2017



Map Drawn By:	Date	Reference
Melissa Mackay	2021/03/24	MOS495

Cape Environmental Assessment Practitioners (Pt) Ltd  
 Telephone: +27 44 874 0365  
 Facsimile: +27 44 874 0432  
 Web: www.cape-eaprac.co.za

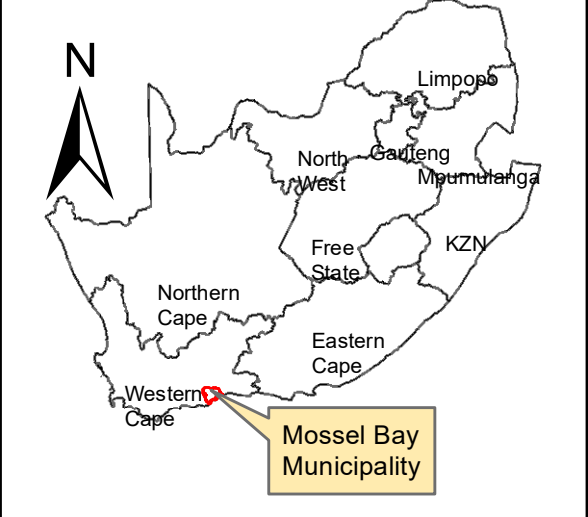
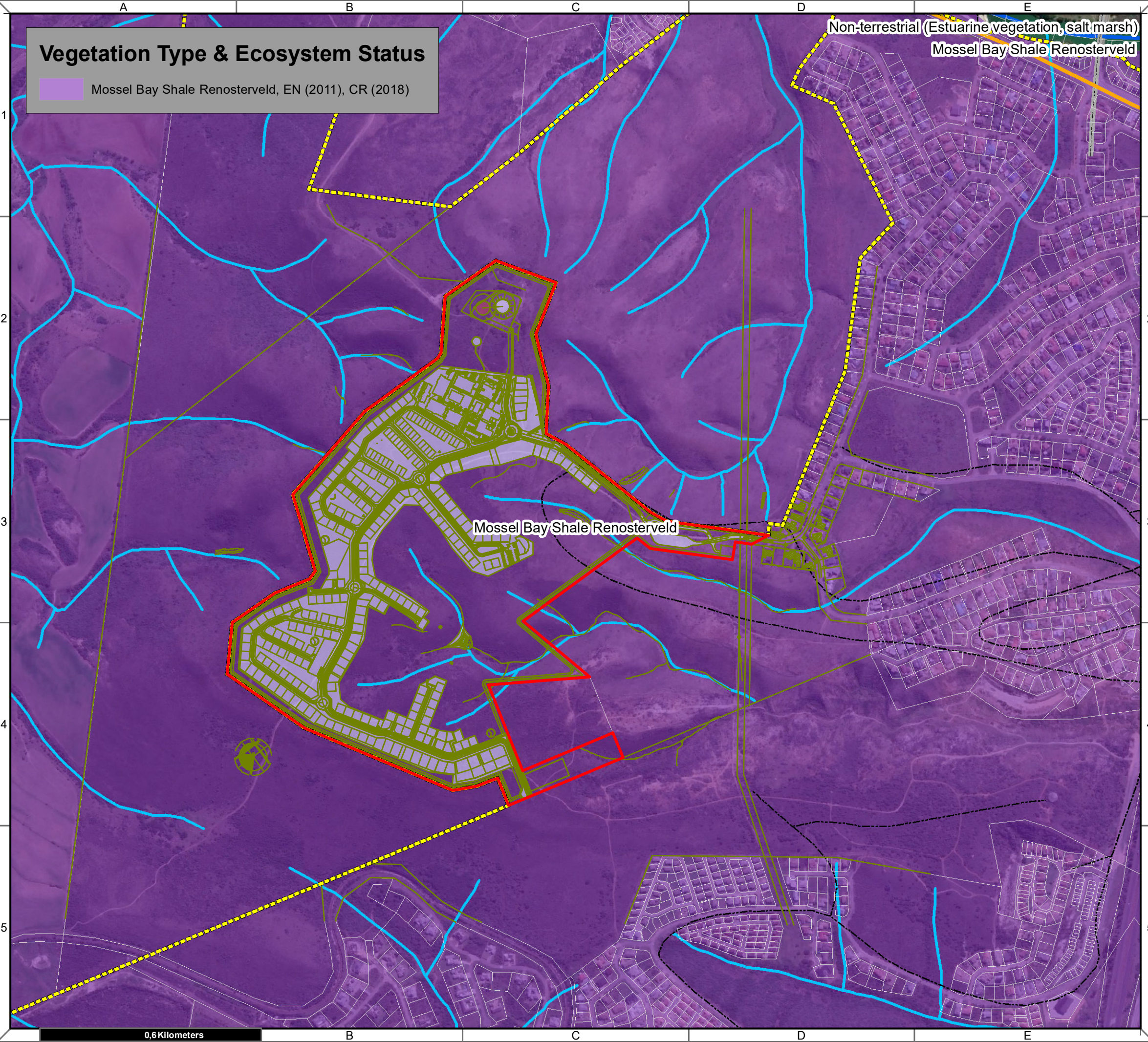
17 Progress St  
 PO Box 2070  
 George 6530

**CRITICAL BIODIVERSITY AREAS**



# Vegetation Type & Ecosystem Status

Mossel Bay Shale Renosterveld, EN (2011), CR (2018)



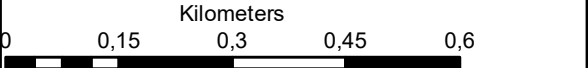
## Hartenbos Heuwels Erf 3122 Hartenbos

**Legend**

- Erf\_3122
- Urban Edge (2019)
- Development Area
- Open Space
- Reservoir
- MAIN ROAD
- OTHER ACCESS
- SECONDARY ROAD
- Perennial Rivers
- Non-Perennial Rivers

**Notes**

- Map Scale is 1: 10 000 when printed on A3
- Aerial image courtesy of Google Earth Pro 2021
- Imagery date September 2020.
- Biodiversity data courtesy of SANBI BGIS 2020 & WCBSP 2017
- 2018 Threat Status Assessment (Skowno, A et al August 2019)
- LC (Least Concern), VU (Vulnerable), EN (Endangered), CR (Critically Endangered)



Map Drawn By:	Date	Reference
Melissa Mackay	2021/03/24	MOS495

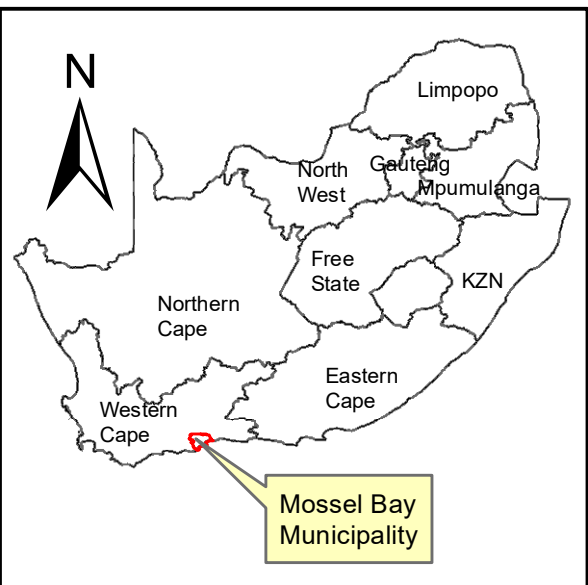
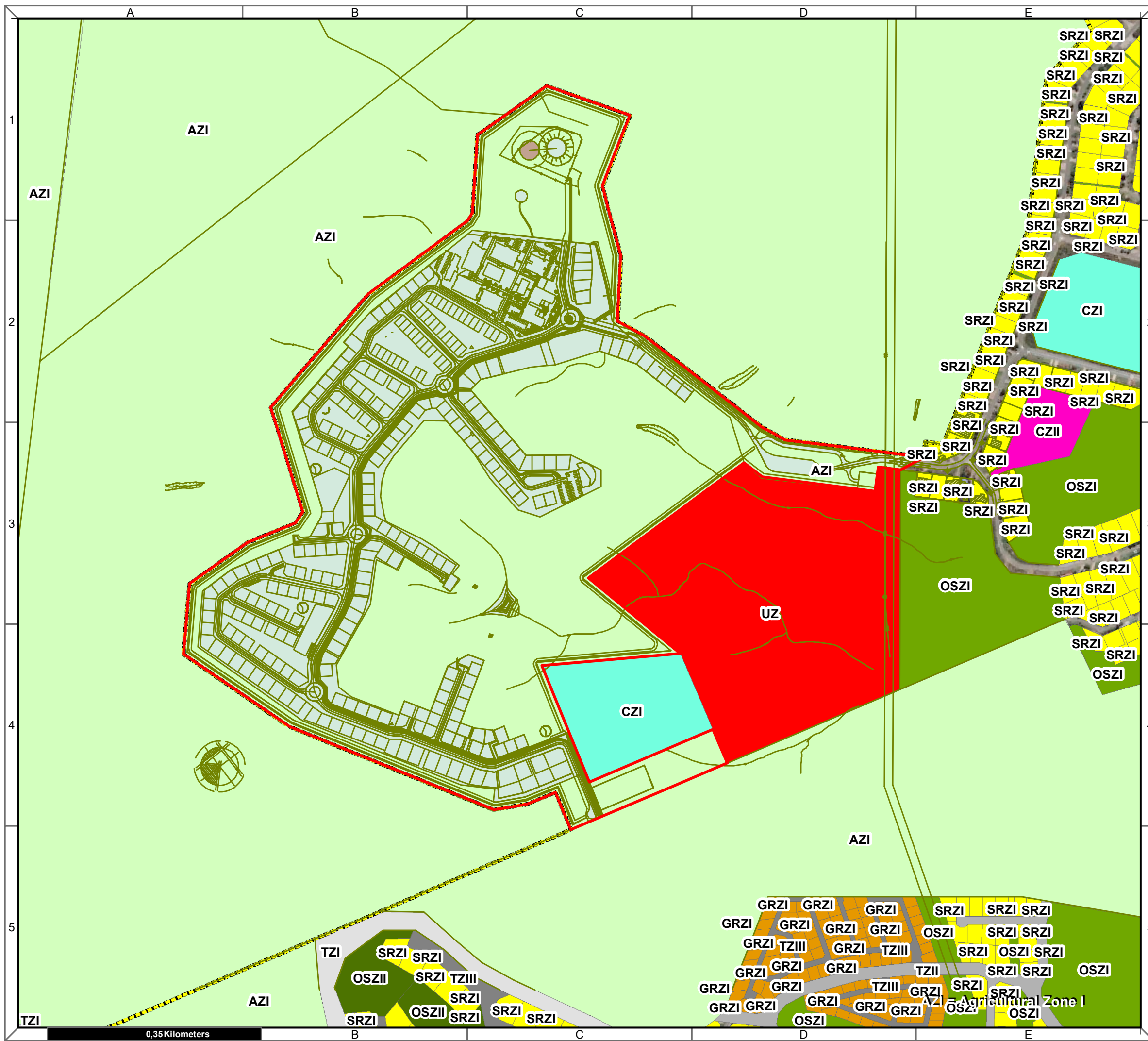
**Cape Environmental Assessment Practitioners (Pty) Ltd**  
 Reg. No. 2008/004627/07

Telephone: +27 44 874 0365  
 Facsimile: +27 44 874 0432  
 Web: www.cape-eaprac.co.za

17 Progress St  
 PO Box 2070  
 George 6530

VEGETATION TYPE & ECOSYSTEM STATUS





**Hartenbos Heuwels  
Erf 3122 Hartenbos**

**Legend**

- Erf\_3122
- Development Area
- Open Space
- Reservoir
- Urban Edge (2019)

**Notes**

- Map Scale is 1: 10 000 when printed on A3
- Aerial image courtesy of Google Earth Pro 2020
- Imagery date September 2020
- Zoning data courtesy of Mossel Bay Municipality GIS server (2019)
- AZI = Agriculture Zone I
- RZI = Residential Zone I
- UZ = Utility Zone
- CZI = Community Zone I

Kilometers

0 0,05 0,1 0,2 0,3 0,4

Map Drawn By:	Date	Reference
Melissa Mackay	2021/03/25	MOS495

**Cape Environmental Assessment Practitioners (Pty) Ltd**  
 Reg. No. 2008/004627/07  
 Telephone: +27 44 874 0365  
 Facsimile: +27 44 874 0432  
 Web: www.cape-eaprac.co.za  
 17 Progress St  
 PO Box 2070  
 George 6530