

05 November 2019

Our Ref: MOS569/11

DEA&DP Ref: 16/3/3/1/D6/28/0027/19

Attention: Mr Steve Kleinhans
DEA&DP

RE: RESPONSE TO THE DEA SCREENING REPORT DATED 20 OCTOBER 2019

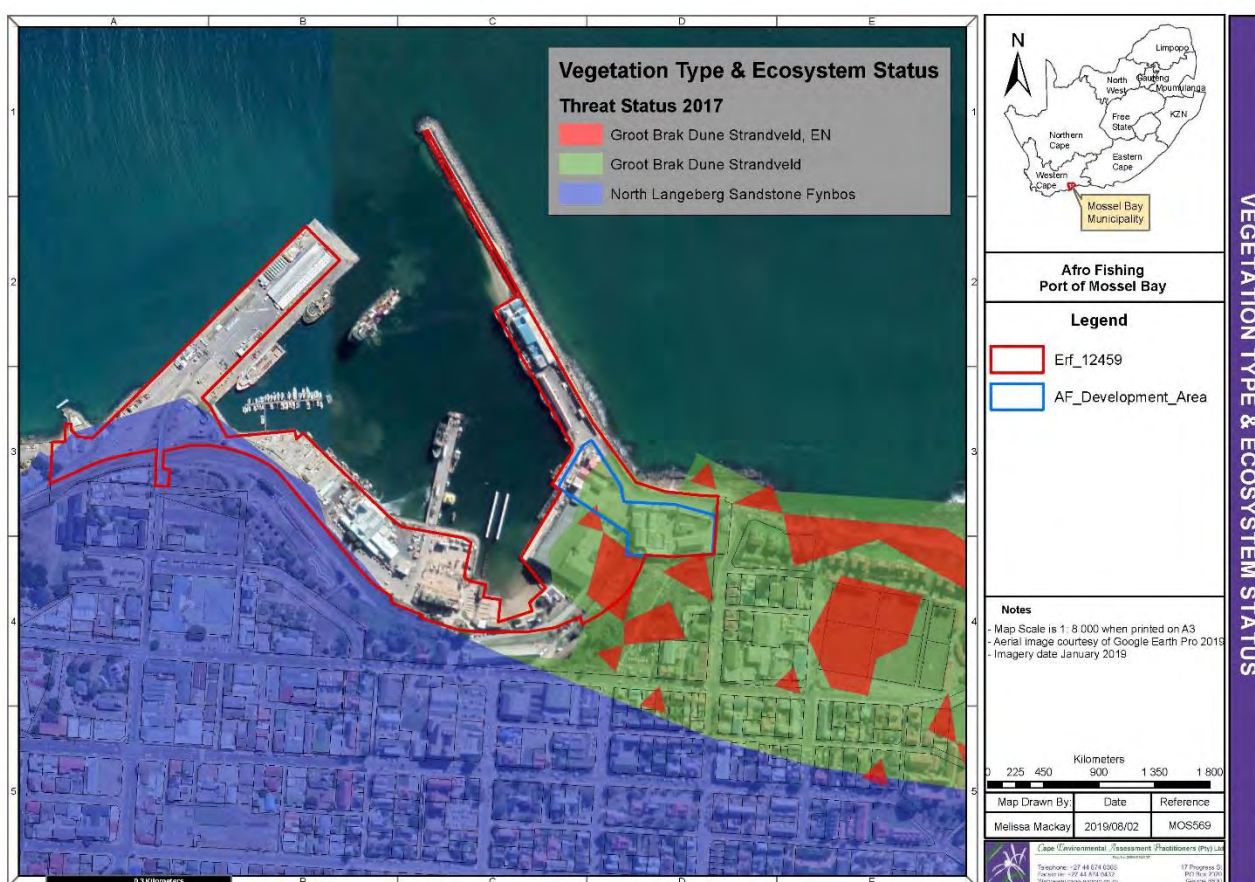
The submission of a report generated from the national web-based environmental screening tool, as contemplated in Regulation 16(1)(b)(v) of the Environmental Impact Assessment Regulations, 2014, published under Government Notice No. R982 in Government Gazette No. 38282 of 4 December 2014, as amended, came into effect as of 4 October 2019.

The report uses national datasets to identify site sensitivities and potential specialist studies that may be required for any particular development. Since the datasets are not necessarily ground truthed, there may be instances where the required specialist study is in actual fact not necessary. Below is a list of the studies generated by the Screening Tool for the Afro Fishing expansion and the motivations as to whether or not the investigation has been done or is required.

No.	Specialist assessment	✓ / ✗	Assessment Protocol Reasoning
1	Agricultural Impact Assessment	✗	The site is within the Port of Mossel Bay, is not zoned for agriculture and has not had any use for agriculture since the inception of the port.
2	Landscape/Visual Impact Assessment	✓	A Visual Statement was prepared by the Architect to provide a concept visual representation of the proposed redevelopment of the old I&J site. The bulk and heights of the redevelopment will be in keeping with the current building and as such no impact assessment was required.
3	Archaeological and Cultural Heritage Impact Assessment	✓	A Notice of Intent to Develop was submitted to Heritage Western Cape who confirmed that no further assessments are required for the redevelopment of the site.
4	Palaeontology Impact Assessment	✗	A Notice of Intent to Develop was submitted to Heritage Western Cape who confirmed that no further assessments are required for the redevelopment of the site.
5	Terrestrial Biodiversity Impact Assessment	✗	The screening tool identifies the site as being of a Very High sensitivity due to the ecosystem layer which indicates that the site is part of an Endangered Ecosystem. It must be noted that the entire site is concreted and significantly transformed, forms part of the Port of Mossel Bay and has no remaining vegetation on it. Furthermore, when considering the 2017 Western Cape Biodiversity Sector Plan (BSP), the dataset has been amended to exclude the areas that have been completely transformed. As such no impact assessment is required.

			Please refer to the Site Photographs in Appendix C, the Biodiversity Plans in Appendix D as well as the response report to the Screening Tool in Annexure K6.
6	Aquatic Biodiversity Impact Assessment	✗	The Port of Mossel Bay does not include any aquatic features and has been significantly transformed. The Screening Tool also clearly identifies the site as having Low Sensitivity for aquatic features.
7	Hydrology	✗	The Port of Mossel Bay does not include any aquatic features and has been significantly transformed. The Screening Tool also clearly identifies the site as having Low Sensitivity for aquatic features.
8	Noise Impact Assessment	✗	The activities proposed will take place within a working harbour, inside enclosed buildings. Noise during construction has been considered by the Socio-Economic specialist and no further assessment is deemed necessary.
9	Traffic Impact Assessment	✓	A Traffic Impact Assessment was undertaken and is included as Annexure G3. Traffic impacts are expected to be negligible.
10	Health Impact Assessment	✓	No specific Health Impact Assessment has been undertaken, but possible health issues have been addressed in the Air Quality Impact Assessment with regards to odour.
11	Socio-Economic Assessment	✓	A Socio-Economic Impact Assessment was undertaken and has been included as Annexure G2.
12	Ambient Air Quality Impact Assessment	✗	No Ambient Air Quality Impact Assessment has been undertaken as a full Air Quality Impact Assessment has been done. However the Garden Route District Municipality did undertake an ambient air quality screening for Quay 1.
13	Air Quality Impact Assessment	✓	An Air Quality Impact Assessment has been undertaken and has been included as Annexure G1.
14	Plant Species Assessment	✗	The site identified for the expansion is completed concreted and significantly transformed. It does not support any potentially endangered plant species and has not since the inception of the port.
15	Animal Species Assessment	✗	The site identified for the expansion is completed concreted and significantly transformed. It does not support any potentially endangered animal species and has not since the inception of the port.

The images below confirm that the site has been completely transformed and forms part of the Port of Mossel Bay.

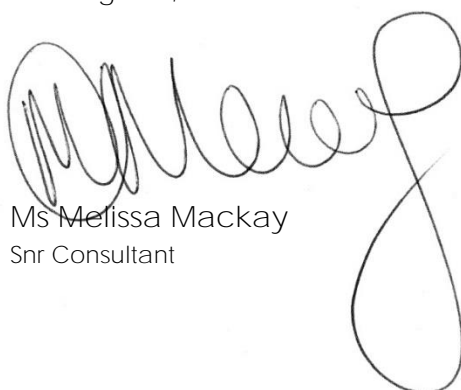




It is the opinion of this office that the specialist studies that have been undertaken are in keeping with the nature of the development and the requirements of the 2014 EIA Regulations.

Please feel free to contact this office should you require any further information.

Kind regards,



Ms Melissa Mackay
Snr Consultant

**SCREENING REPORT FOR AN ENVIRONMENTAL AUTHORIZATION OR
FOR A PART TWO AMENDMENT OF AN ENVIRONMENTAL AUTHORISATION
AS REQUIRED BY THE 2014 EIA REGULATIONS – PROPOSED DEVELOPMENT
FOOTPRINT ENVIRONMENTAL SENSITIVITY**

EIA Reference number: TBC

Project name: Afro Fishing Fishmeal & Oil Reduction Facility

Project title: Afro Fishing Fishmeal & Oil Reduction Facility

Date screening report generated: 29/10/2019 12:19:51

Applicant: Afro Fishing (Pty) Ltd

Compiler: Cape EAPrac

Compiler signature:

.....

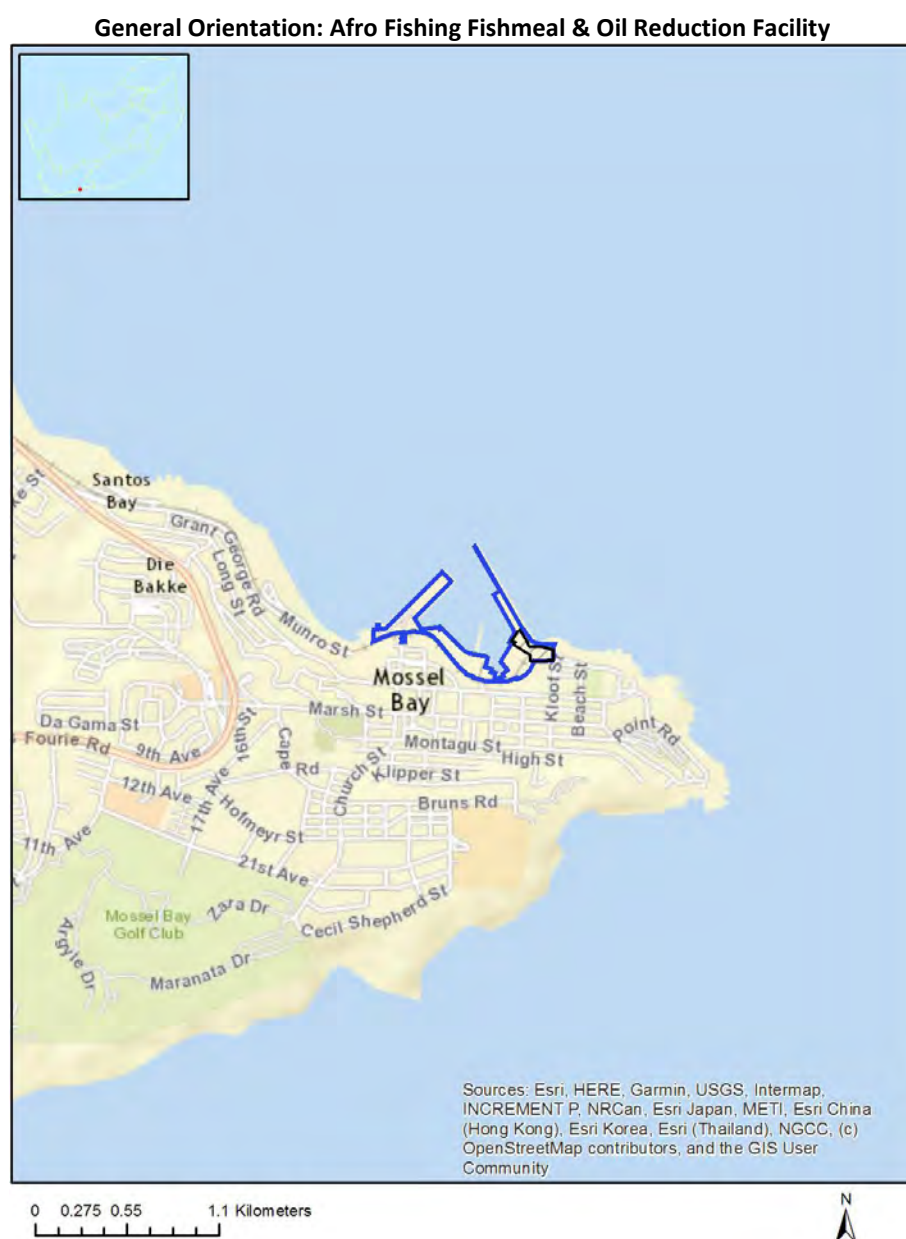


Table of Contents

Proposed Project Location	3
Orientation map 1: General location	3
Map of proposed site and relevant area(s)	4
Cadastral details of the proposed site	4
Wind and Solar developments with an approved Environmental Authorisation or applications under consideration within 30 km of the proposed area	5
Environmental Management Frameworks relevant to the application	5
Environmental screening results and assessment outcomes	5
Relevant development incentives, restrictions, exclusions or prohibitions	5
Map indicating proposed development footprint within applicable development incentive, restriction, exclusion or prohibition zones.....	6
Proposed Development Area Environmental Sensitivity.....	6
Specialist assessments identified.....	7
Results of the environmental sensitivity of the proposed area.	9
MAP OF RELATIVE AGRICULTURE THEME SENSITIVITY	9
MAP OF RELATIVE AQUATIC BIODIVERSITY THEME SENSITIVITY	10
MAP OF RELATIVE ARCHAEOLOGICAL AND CULTURAL HERITAGE THEME SENSITIVITY	11
MAP OF RELATIVE CIVIL AVIATION THEME SENSITIVITY	12
MAP OF RELATIVE PALEONTOLOGY THEME SENSITIVITY	13
MAP OF RELATIVE PLANT SPECIES THEME SENSITIVITY	14
MAP OF RELATIVE DEFENCE THEME SENSITIVITY.....	15
MAP OF RELATIVE TERRESTRIAL BIODIVERSITY THEME SENSITIVITY	16

Proposed Project Location

Orientation map 1: General location



Map of proposed site and relevant area(s)



Cadastral details of the proposed site

Property details:

No	Farm Name	Farm/ Erf No	Portion	Latitude	Longitude	Property Type
1	MOSEL BAY	12459	0	34°10'48.45S	22°8'47.34E	Erven

Development footprint¹ vertices:

Footprint	Latitude	Longitude
1	34°10'46.9S	22°9'4.5E
1	34°10'48.56S	22°9'4.35E
1	34°10'48.66S	22°9'2.26E
1	34°10'48.55S	22°9'0.03E
1	34°10'47.74S	22°9'0.14E
1	34°10'46S	22°8'56.85E
1	34°10'45.69S	22°8'57.05E
1	34°10'45.41S	22°8'56.44E
1	34°10'43.88S	22°8'57.58E
1	34°10'43.66S	22°8'57.99E
1	34°10'44.99S	22°8'59.02E
1	34°10'45.35S	22°8'59.35E
1	34°10'45.95S	22°8'59.66E
1	34°10'46.3S	22°8'59.79E
1	34°10'46.44S	22°9'2.43E
1	34°10'46.9S	22°9'4.5E

¹ “development footprint”, means the area within the site on which the development will take place and includes all ancillary developments for example roads, power lines, boundary walls, paving etc. which require vegetation clearance or which will be disturbed and for which the application has been submitted.

Wind and Solar developments with an approved Environmental Authorisation or applications under consideration within 30 km of the proposed area

No nearby wind or solar developments found.

Environmental Management Frameworks relevant to the application

No intersections with EMF areas found.

Environmental screening results and assessment outcomes

The following sections contain a summary of any development incentives, restrictions, exclusions or prohibitions that apply to the proposed development footprint as well as the most environmental sensitive features on the footprint based on the footprint sensitivity screening results for the application classification that was selected. The application classification selected for this report is:

Activity requiring permit or licence in terms of National or Provincial legislation governing the release or generation of emissions|Emissions|General.

Relevant development incentives, restrictions, exclusions or prohibitions

The following development incentives, restrictions, exclusions or prohibitions and their implications that apply to this footprint are indicated below.

Incentive, restriction or prohibition	Implication
South African Conservation Areas	https://screening.environment.gov.za/ScreeningDownloads/DevelopmentZones/SACAD_OR_2019_Q1_Metadata.pdf

Map indicating proposed development footprint within applicable development incentive, restriction, exclusion or prohibition zones



Proposed Development Area Environmental Sensitivity

The following summary of the development footprint environmental sensitivities is identified. Only the highest environmental sensitivity is indicated. The footprint environmental sensitivities for the proposed development footprint as identified, are indicative only and must be verified on site by a suitably qualified person before the specialist assessments identified below can be confirmed.

Theme	Very High sensitivity	High sensitivity	Medium sensitivity	Low sensitivity
Agriculture Theme				X
Aquatic Biodiversity Theme				X

Archaeological and Cultural Heritage Theme		X		
Civil Aviation Theme		X		
Paleontology Theme			X	
Plant Species Theme			X	
Defence Theme				X
Terrestrial Biodiversity Theme	X			

Specialist assessments identified

Based on the selected classification, and the environmental sensitivities of the proposed development footprint, the following list of specialist assessments have been identified for inclusion in the assessment report. It is the responsibility of the EAP to confirm this list and to motivate in the assessment report, the reason for not including any of the identified specialist study including the provision of photographic evidence of the footprint situation.

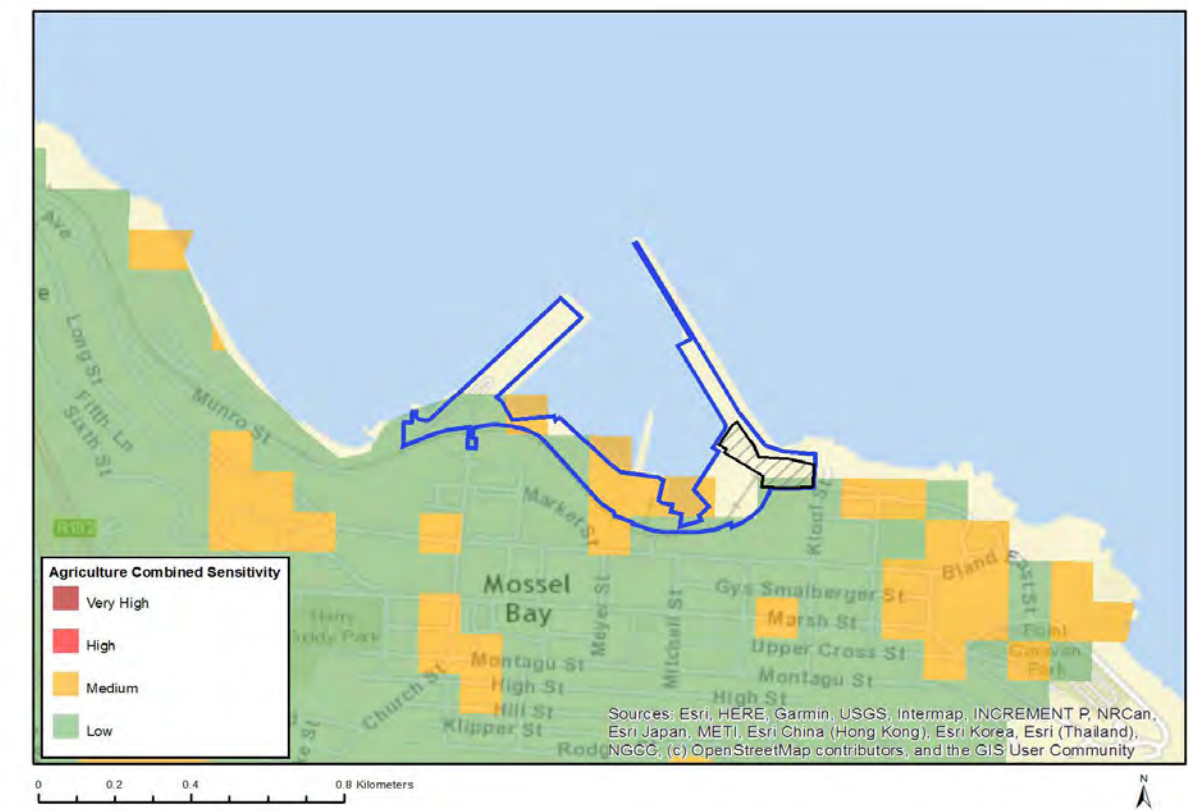
N o	Specialist assessment	Assessment Protocol
1	Agricultural Impact Assessment	https://screening.environment.gov.za/ScreeningDownloads/AssessmentProtocols/DraftGazetted_Agriculture_Assessment_Protocols.pdf
2	Landscape/Visual Impact Assessment	https://screening.environment.gov.za/ScreeningDownloads/AssessmentProtocols/DraftGazetted_General_Requirement_Assessment_Protocols.pdf
3	Archaeological and Cultural Heritage Impact Assessment	https://screening.environment.gov.za/ScreeningDownloads/AssessmentProtocols/DraftGazetted_General_Requirement_Assessment_Protocols.pdf
4	Paleontology Impact Assessment	https://screening.environment.gov.za/ScreeningDownloads/AssessmentProtocols/DraftGazetted_General_Requirement_Assessment_Protocols.pdf
5	Terrestrial Biodiversity Impact Assessment	https://screening.environment.gov.za/ScreeningDownloads/AssessmentProtocols/DraftGazetted_Terrestrial_Biodiversity_Assessment_Protocols.pdf
6	Aquatic Biodiversity Impact Assessment	https://screening.environment.gov.za/ScreeningDownloads/AssessmentProtocols/DraftGazetted_Aquatic_Biodiversity_Assessment.pdf
7	Hydrology	https://screening.environment.gov.za/ScreeningDownloads/AssessmentProtocols

	Assessment	/DraftGazetted_General_Requirement_Assessment_Protocols.pdf
8	Noise Impact Assessment	https://screening.environment.gov.za/ScreeningDownloads/AssessmentProtocols/DraftGazetted_Noise_Impacts_Assessment_Protocols.pdf
9	Traffic Impact Assessment	https://screening.environment.gov.za/ScreeningDownloads/AssessmentProtocols/DraftGazetted_General_Requirement_Assessment_Protocols.pdf
10	Health Impact Assessment	https://screening.environment.gov.za/ScreeningDownloads/AssessmentProtocols/DraftGazetted_General_Requirement_Assessment_Protocols.pdf
11	Socio-Economic Assessment	https://screening.environment.gov.za/ScreeningDownloads/AssessmentProtocols/DraftGazetted_General_Requirement_Assessment_Protocols.pdf
12	Ambient Air Quality Impact Assessment	https://screening.environment.gov.za/ScreeningDownloads/AssessmentProtocols/DraftGazetted_General_Requirement_Assessment_Protocols.pdf
13	Air Quality Impact Assessment	https://screening.environment.gov.za/ScreeningDownloads/Assessment/General/Appendix6.pdf
14	Plant Species Assessment	https://screening.environment.gov.za/ScreeningDownloads/AssessmentProtocols/DraftGazetted_General_Requirement_Assessment_Protocols.pdf
15	Animal Species Assessment	https://screening.environment.gov.za/ScreeningDownloads/AssessmentProtocols/DraftGazetted_General_Requirement_Assessment_Protocols.pdf

Results of the environmental sensitivity of the proposed area.

The following section represents the results of the screening for environmental sensitivity of the proposed footprint for relevant environmental themes associated with the project classification. It is the duty of the EAP to ensure that the environmental themes provided by the screening tool are comprehensive and complete for the project. Refer to the disclaimer.

MAP OF RELATIVE AGRICULTURE THEME SENSITIVITY

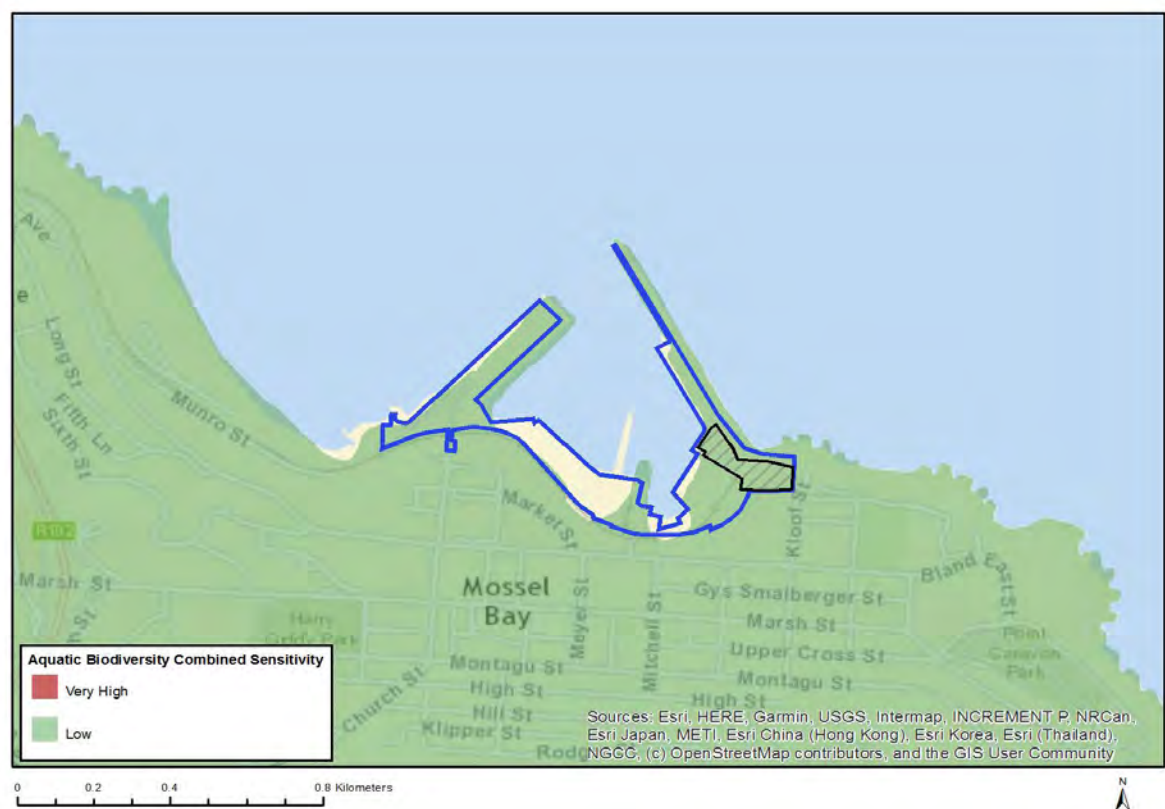


Very High sensitivity	High sensitivity	Medium sensitivity	Low sensitivity
			X

Sensitivity Features:

Sensitivity	Feature(s)
Low	Land capability;01. Very low/02. Very low/03. Low-Very low/04. Low-Very low/05. Low

MAP OF RELATIVE AQUATIC BIODIVERSITY THEME SENSITIVITY

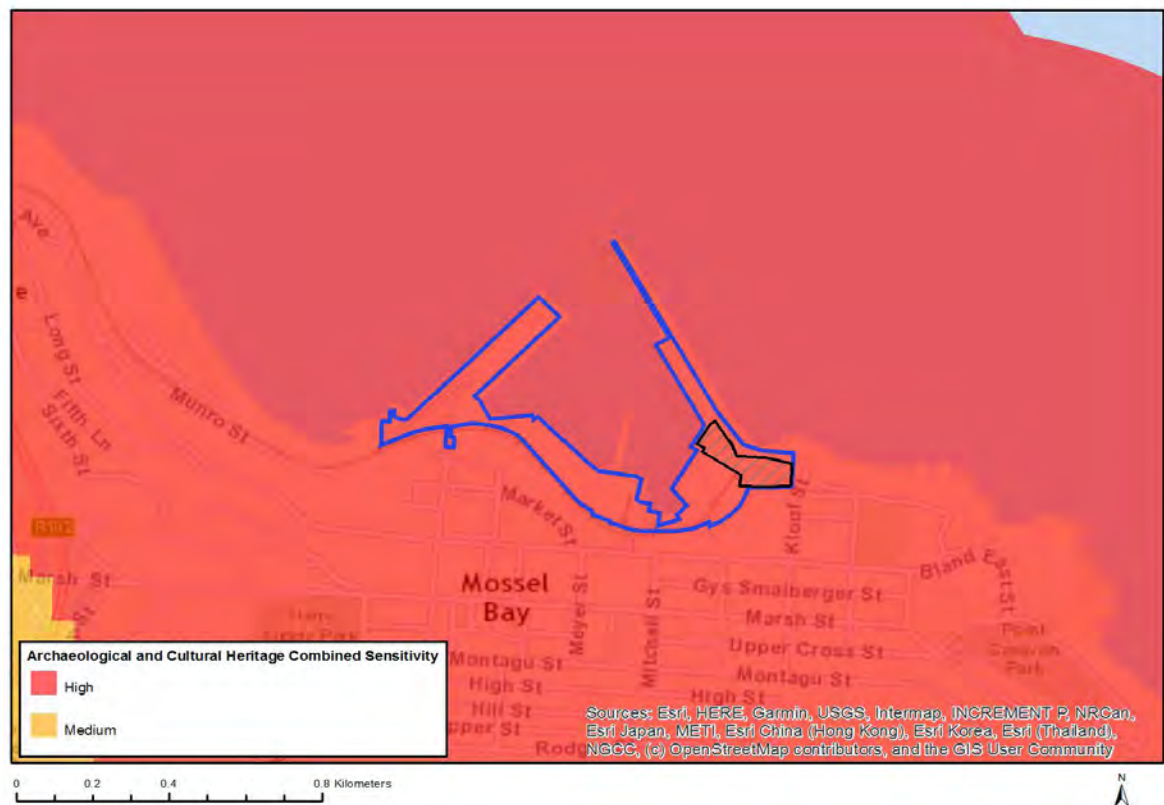


Very High sensitivity	High sensitivity	Medium sensitivity	Low sensitivity
			X

Sensitivity Features:

Sensitivity	Feature(s)
Low	Low Sensitivity Areas

MAP OF RELATIVE ARCHAEOLOGICAL AND CULTURAL HERITAGE THEME SENSITIVITY

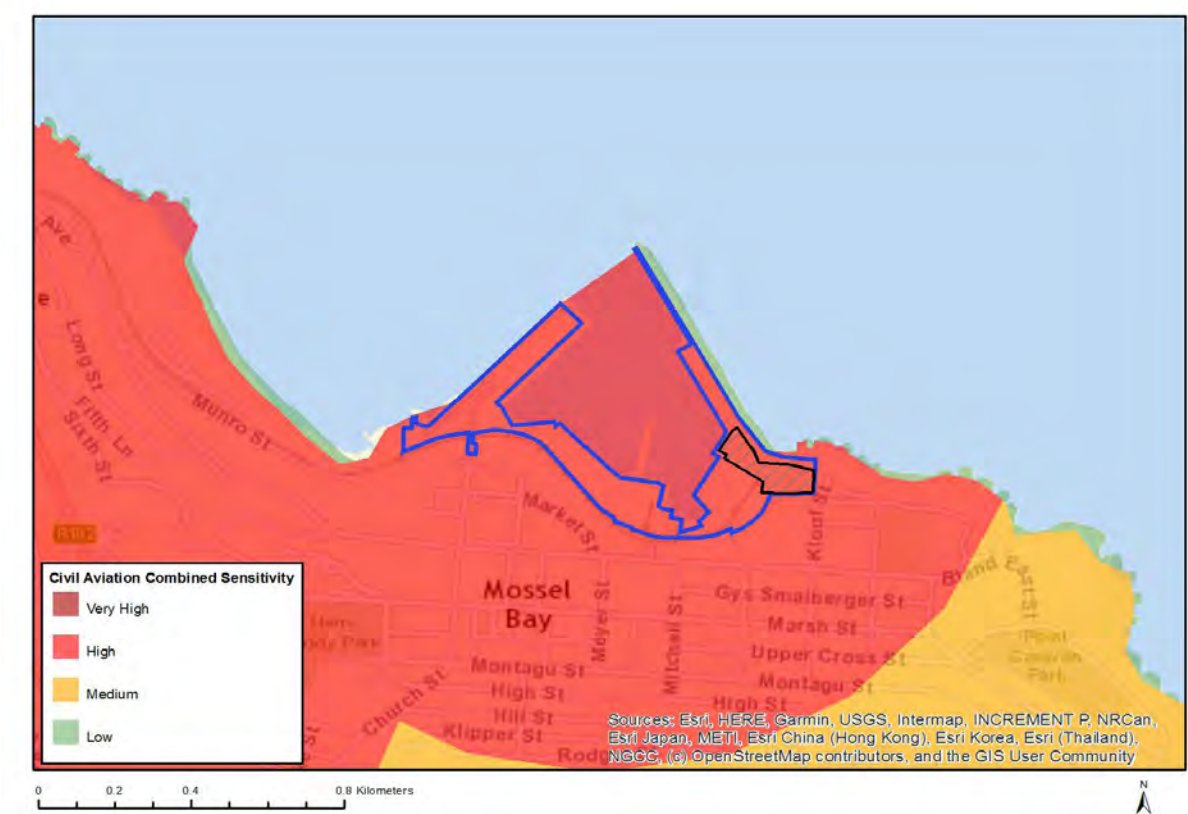


Very High sensitivity	High sensitivity	Medium sensitivity	Low sensitivity
	X		

Sensitivity Features:

Sensitivity	Feature(s)
High	Within coastal belt
High	Within 500 m of a heritage site

MAP OF RELATIVE CIVIL AVIATION THEME SENSITIVITY

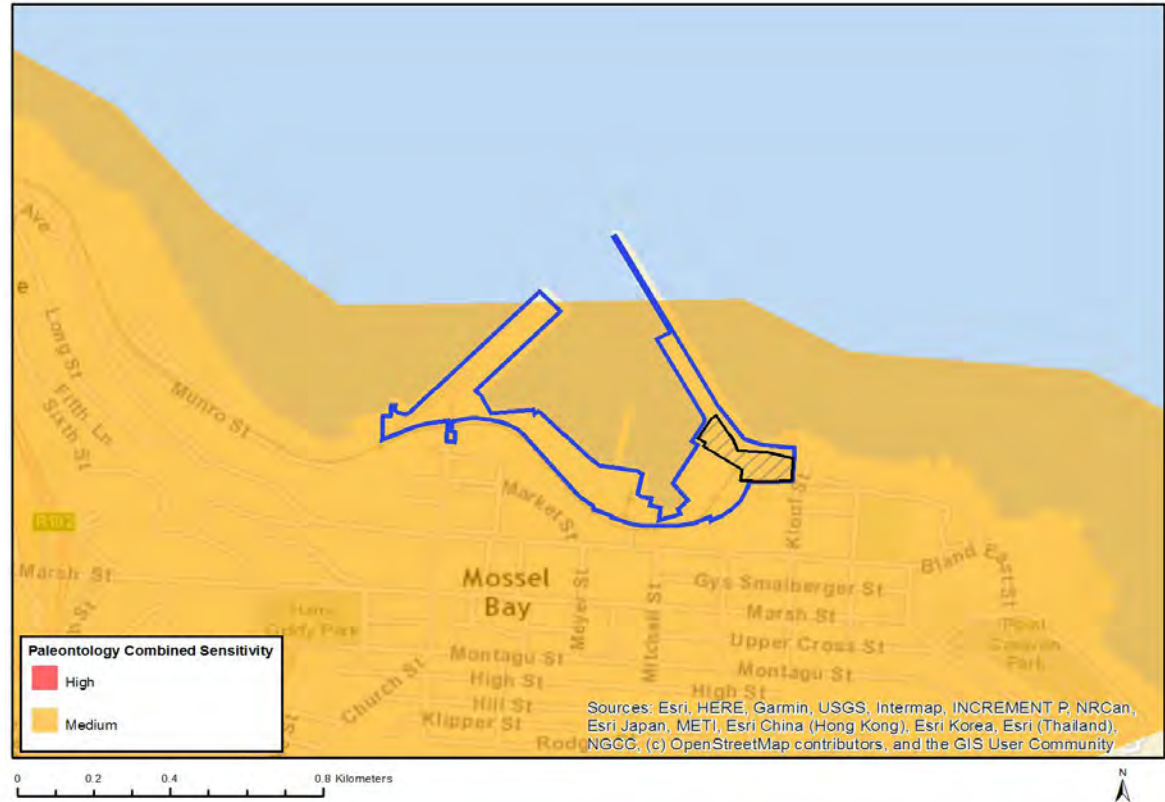


Very High sensitivity	High sensitivity	Medium sensitivity	Low sensitivity
	X		

Sensitivity Features:

Sensitivity	Feature(s)
High	Dangerous and restricted airspace as demarcated
Medium	Between 15 and 35 km from a civil aviation radar
Medium	Between 15 and 35 km from a major civil aviation aerodrome
Medium	Between 8 and 15 km of other civil aviation aerodrome

MAP OF RELATIVE PALEONTOLOGY THEME SENSITIVITY

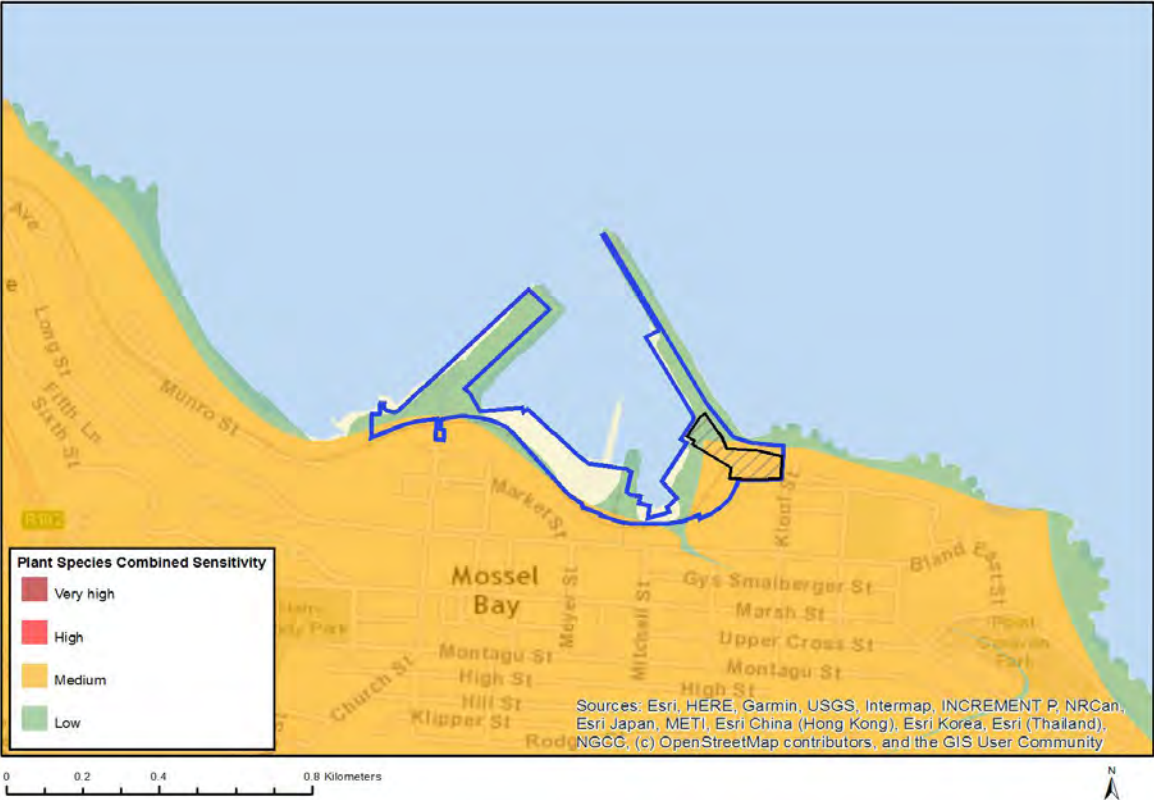


Very High sensitivity	High sensitivity	Medium sensitivity	Low sensitivity
		X	

Sensitivity Features:

Sensitivity	Feature(s)
Medium	Rock units with a medium paleontological sensitivity

MAP OF RELATIVE PLANT SPECIES THEME SENSITIVITY

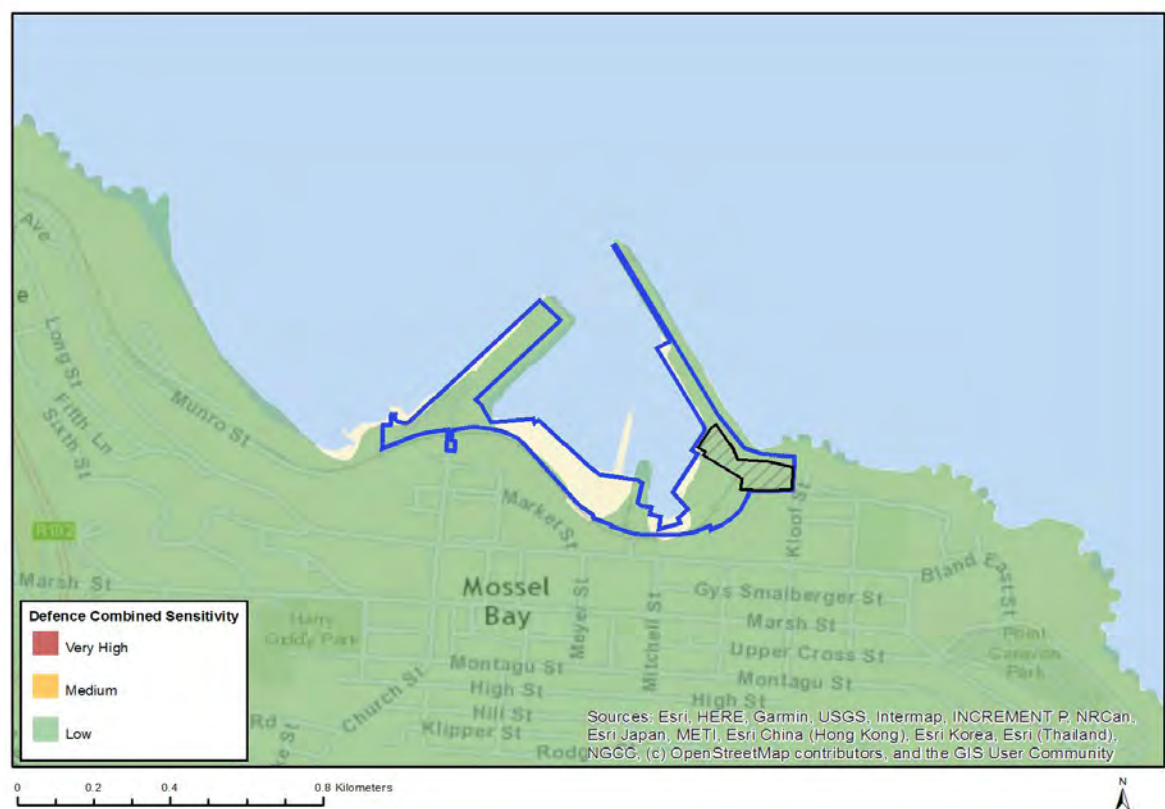


Very High sensitivity	High sensitivity	Medium sensitivity	Low sensitivity
		X	

Sensitivity Features:

Sensitivity	Feature(s)
Low	Low sensitivity
Medium	Sensitive species 750
Medium	Ruschia leptocalyx
Medium	Sensitive species 483
Medium	Duvalia immaculata
Medium	Euchaetis albertiniana
Medium	Muraltia knysnaensis
Medium	Polygala pubiflora
Medium	Lebeckia gracilis
Medium	Lampranthus pauciflorus
Medium	Wahlenbergia polyantha

MAP OF RELATIVE DEFENCE THEME SENSITIVITY

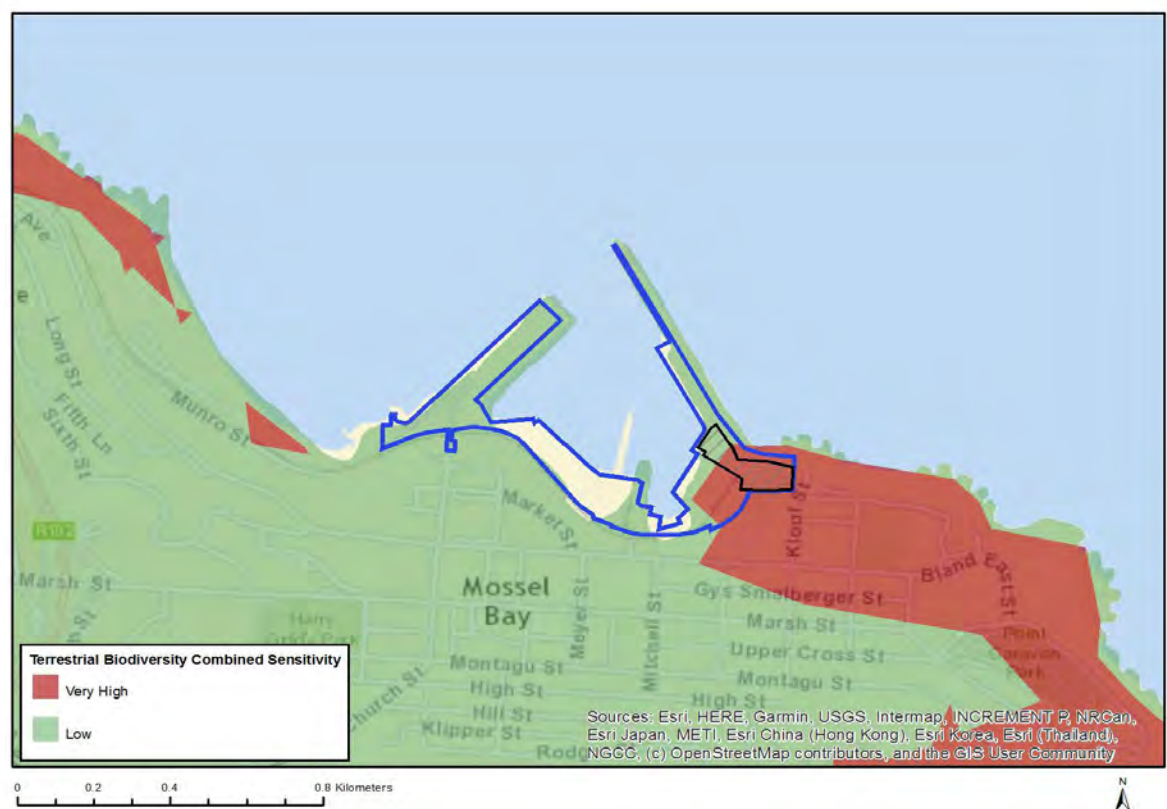


Very High sensitivity	High sensitivity	Medium sensitivity	Low sensitivity
			X

Sensitivity Features:

Sensitivity	Feature(s)
Low	Low sensitivity

MAP OF RELATIVE TERRESTRIAL BIODIVERSITY THEME SENSITIVITY



Very High sensitivity	High sensitivity	Medium sensitivity	Low sensitivity
X			

Sensitivity Features:

Sensitivity	Feature(s)
Low	None
Very High	Endangered ecosystem



REFERENCE: 16/3/3/1/D6/28/0027/19
ENQUIRIES: Steve Kleinhans
DATE OF ISSUE: 2019 -10- 30

The Managing Director
AFRO FISHING (PTY) LTD
PO Box 2752
Mossel Bay
6500

Attention: Mr. D. van Zyl

Tel: (044) 690 5520
E-mail: deon@afrofishing.co.za

Dear Sir

ACKNOWLEDGEMENT OF RECEIPT OF THE APPLICATION FORM FOR BASIC ASSESSMENT IN TERMS OF THE ENVIRONMENTAL IMPACT ASSESSMENT REGULATIONS, 2014 (AS AMENDED) FOR THE PROPOSED AFRO FISHING FISHMEAL AND OIL REDUCTION FACILITY ON A PORTION OF ERF 12459 (QUAY 1), PORT OF MOSSEL BAY, MOSSEL BAY

1. The Application Form dated 23 October 2019, as received by this Department on 23 October 2019, refers.
2. The application form appears to be in order in accordance with regulation 16. This letter serves as an acknowledgment of receipt of the aforementioned document by this Department.
3. Following a review of the information provided in the document it is understood that the Afro Fishing (Pty) Ltd ("the applicant") is proposing the following:

The expansion of the current Afro Fishing facility to include fishmeal and oil reduction processes on the current footprint of the old I&J facility, with a new canning store adjacent to the Afro Fishing store. The proposal entails the harvesting of industrial fish, e.g. anchovy, red-eye, etc. from local waters for the sole purpose of producing fishmeal and fish oil. It is understood that the plant will have a capacity to process a maximum of approximately 1000 tons per day. The proposed project will produce fishmeal and fish oil products for export markets.

4. Please note the following requirements to be complied with in respect to all applications for Environmental Authorisation in terms of the National Environmental Management Act (Act No. 107 of 1998) ("NEMA") and the EIA Regulations, 2014 (as amended):

4.1. Alternatives

Be advised that in terms of the EIA Regulations and NEMA, the investigation of alternatives is mandatory. All alternatives identified must therefore be investigated to determine if they

are feasible and reasonable. In this regard it must be noted that the Department may grant authorisation for an alternative as if it has been applied for or may grant authorisation in respect of all or part of the activity applied for. Alternatives are not limited to activity alternatives, but include layout alternatives, design, operational and technology alternatives. You are hereby reminded that it is mandatory to investigate and assess the option of not proceeding with the proposed activity (the "no-go" option) in addition to the other alternatives identified. Every EIA process must therefore identify and investigate alternatives, with feasible and reasonable alternatives to be comparatively assessed.

If, however, after having identified and investigated alternatives, no feasible and reasonable alternatives were found, no comparative assessment of alternatives, beyond the comparative assessment of the preferred alternative and the option of not proceeding, is required during the assessment. What would, however, be required in this instance is that proof of the investigation undertaken and motivation indicating that no reasonable or feasible alternatives other than the preferred option and the no-go option exist must be provided to the Department. Refer to the Department's Guideline on Alternatives available on the Department's website <http://eadp-westerncape.kznshf.gov.za/your-resource-library>).

4.2. Public Participation

The BAR must be subject to a Public Participation Process ("PPP") that must comply with Chapter 6 of the EIA Regulations, 2014.

In addition to the above, the Environmental Assessment Practitioner ("EAP") must submit a draft BAR to the Department for a minimum 30-day comment period. The draft BAR must also be made available to all relevant State Departments/Organs of State that administer laws relating to a matter affecting the environment, for a 30-day comment period.

The EAP must notify the Department in writing of the date the draft BAR was submitted to the relevant State Departments/Organs of State and clearly indicate whether or not such State Departments/Organs of State were notified of the 30-day comment period in terms of Section 24O of NEMA. It is imperative that State Departments/Organs of State are in possession of the draft Reports when the EAP issues them with the notice in terms of Section 24O of NEMA. Please note that the EAP is responsible for such consultation. Therefore, it is requested that the EAP include proof of such notification to the relevant State Departments/Organs of State in terms of Section 24O(2) and (3) of NEMA in the BAR, where appropriate.

In terms of good practice, you are encouraged to engage with State Departments and other Organs of State early in the EIA process to solicit their inputs on any of their requirements to be addressed in the EIA process. Please note that this does not replace the requirement of making the draft BAR available to State Departments/Organs of State as stipulated above.

A register of I&APs must be opened and maintained. The register must also be submitted to the Department.

The EAP must record and respond to all comments received. The comments and responses must be captured in a Comments and Responses Report and must also include a

description of the public participation process followed. This report must also be included in the public participation information attached to the BAR to be submitted for decision.

4.3. Environmental Management Programme

In accordance with Section 24N of NEMA and Regulation 19 of Government Notice ("GN") No. R. 982 of 4 December 2014 (as amended), the Department hereby requires the submission of an Environmental Management Programme ("EMP"). The contents of such an EMP must meet the requirements outlined in Section 24N (2) and (3) of the NEMA (as amended) and Appendix 4 of GN No. R. 982 of 4 December 2014 (as amended). The EMP must address the potential environmental impacts of the activity throughout the project life cycle, including an assessment of the effectiveness of monitoring and management arrangements after implementation (auditing). The EMP must be submitted together with the BAR. When compiling the EMP, the Department's Guideline for Environmental Management Plans (June 2005), available on the Department's website <http://eadp-westerncape.kznsshf.gov.za/your-resource-library> must be taken into account.

4.4. National Web Based Environmental Screening Tool Report

In accordance with Regulation 16(1)(b)(v) when an application is submitted in terms of Regulation 19, the application must be accompanied by the report generated by the national web based environmental screening tool. It is noted that the report has been attached in Appendix 7; however, the report was generated prior to 4 October 2019, the date on which the requirement to use said web based environmental screening tool came into effect. It is advised that the EAP check the information in the screening report to ensure the outcome contains all current information as of 4 October 2019.

Furthermore, the report identifies 13 specialist reports for inclusion in the Basic Assessment Report (BAR). Please note that it is the responsibility of the EAP to confirm this list and to motivate in the assessment report, the reason for not including any of the identified specialist studies including the provision of photographic evidence of the footprint situation. Your EAP is advised to consult this Department regarding the required specialist studies prior to submitting the draft BAR for comment.

Furthermore, please be advised of the respective protocols relating to the various environmental sensitivity themes. Where applicable, it must be ensured that the protocols are implemented and adhered to.

4.5. Guidelines

When undertaking the EIA process, you must take into account the applicable guidelines including the guidelines developed by the Department. The Department's guidelines can be downloaded from the Department's website (<http://eadp-westerncape.kznsshf.gov.za/your-resource-library>). In particular, the guidelines that may be applicable to the proposed development include, *inter alia*, the following:

- Circular EADP 0028/2014: One Environmental Management System.
- Guideline on Need and Desirability (March 2013).
- Guideline on generic terms of Reference for EAPs and Project Schedules (March 2013)
- Guideline for determining the scope of specialist involvement in EIA processes (June 2005)
- Guideline for review of specialist input in the EIA process (June 2005)

- Guideline for involving visual and aesthetic specialists in the EIA process (June 2005)
- Guideline for involving heritage specialists in the EIA process (June 2005)
- Guideline for involving social assessment specialists in the EIA process (February 2007)
- Guideline for Environmental Management Plans (June 2005).
- Guideline on Alternatives (March 2013).
- Guideline for involving economists in the EIA process (June 2005)

4.6. Need & desirability

In terms of the NEMA EIA Regulations, when considering an application, the Department must take into account a number of specific considerations including *inter alia*, the need for and desirability of any proposed development. As such, the need for and desirability of the proposed activity must be considered and reported on in the BAR. The BAR must reflect how the strategic context of the site in relation to the broader surrounding area, has been considered in addressing need and desirability. Refer to the Department's Guideline on Need and Desirability (March 2013).

4.7. NEMA Principles

In addition to the above, you must clearly show how the proposed development complies with the principles contained in Section 2 of the NEMA and must also show how the proposed development meets the requirements of sustainable development.

4.8. BAR Requirements

The BAR must contain all the information outlined in Appendix 1 of GN No. R. 982 of 4 December 2014 (as amended) and must also include the information requested in this letter. Omission of any of the said information may result in the application for Environmental Authorisation being refused.

In accordance with Regulation 19 of GN No. R. 982 of 4 December 2014, the Department hereby stipulates that the BAR must be submitted to this Department for decision within **90 days** from the date of receipt of the application by the Department. If however, significant changes have been made or significant new information has been added to the BAR, the applicant/EAP must notify the Department that an additional 50 days (i.e. 140 days from receipt of the application) would be required for the submission of the BAR. The additional 50 days must include a minimum 30-day commenting period to allow registered I&APs to comment on the revised report/additional information.

If the BAR is not submitted within 90 days or 140 days, where an extension is applicable, the application will lapse in terms of Regulation 45 of Government Notice Regulation No. 982 of 4 December 2014 and your file will be closed. Should you wish to pursue the application again, a new application process would have to be initiated. A new Application Form would have to be submitted and the prescribed application fee would have to be paid.

Please note that **two printed copies** as well as **one electronic copy** (saved on CD/DVD) of the BAR must be submitted to the Department.

5. Kindly quote the above-mentioned reference number in any future correspondence in respect of the application.
6. Please note that the proposed development may not commence prior to an environmental authorisation being granted by the Department.
7. This Department reserves the right to revise or withdraw initial comments or request further information from you based on any information received.

Yours faithfully



HEAD OF COMPONENT

ENVIRONMENTAL IMPACT MANAGEMENT SERVICES: REGION 3

DEPARTMENT OF ENVIRONMENTAL AFFAIRS AND DEVELOPMENT PLANNING

Ref.: 16/3/3/1/D6/28/0027/19

Copied to:

EAP: Ms. Melissa Mackay (Cape EAPrac)

Garden Route District Municipality: Air Quality Control

Mossel Bay Municipality: Planning and Integrated Services

E-mail: mel@cape-eaprac.co.za

E-mail: jschoeman@gardenroute.gov.za

E-mail: cventer@mosselbay.gov.za

DELIVERY / AFLEWERING

82

From	Cape EAPrac
Van	P.O. Box 2070 / George 6530
	17 Progress Street
	Tel: 044 874 0365 Fax: 044 874 0432
	Web: www.cape-eaprac.co.za

Date	23/10/19
Datum	

To	STEUE KLEINMANS
Aan	DEA BDP

1 x DOC

PLEASE RECEIVE in good order and condition the undermentioned Goods, viz.
ONTVANG ASB. die ondergemelde goedere in bevredigende toestand.

Quantity Hoev.	Description Beskrywing
Doc:	APPLICATION FORM
	APPRO FISHING FISHMEAL & FISH OIL REDUCTION FACILITY
Ref	MOS 569/10
Delivered: O. Nandipha	
Received: F. Julius	



Signed / Geteken

REGISTERED POST

Our Ref: HM/MOSSEL BAY / ERF 12459
Case No.: 19091112SB0916E
Enquiries: Stephanie-Anne Barnardt
E-mail: stephanie.barnardt@westerncape.gov.za
Tel 021 483 9370
Date: 4 October 2019

Afro Fishing (Pty)
PO Box 2752
Mossel Bay
6500
deon@afrofishing.co.za



RESPONSE TO NOTIFICATION OF INTENT TO DEVELOP: FINAL
In terms of Section 38(8) of the National Heritage Resources Act (Act 25 of 1999) and the Western Cape
Provincial Gazette 6061, Notice 298 of 2003

NOTIFICATION OF INTENT TO DEVELOP: PROPOSED EXPANSION OF THE EXISTING AFRO FISHING FACILITY ON ERF 12459, MOSSEL BAY SUBMITTED IN TERMS OF SECTION 38(8) OF THE NATIONAL HERITAGE RESOURCES ACT (ACT 25 OF 1999)

CASE NUMBER: 19091112SB0916E

The matter above has reference.

Heritage Western Cape is in receipt of your application for the above matter received on 16 September 2019. This matter was discussed at the Heritage Officers meeting held on 30 September 2019.

You are hereby notified that, since there is no reason to believe that the proposed expansion of the existing Afro Fishing facility, will impact on heritage resources, no further action under Section 38 of the National Heritage Resources Act (Act 25 of 1999) is required.

However, should any heritage resources, including evidence of graves and human burials, archaeological material and paleontological material be discovered during the execution of the activities above, all works must be stopped immediately and Heritage Western Cape must be notified without delay.

This letter does not exonerate the applicant from obtaining any necessary approval from any other applicable statutory authority.

HWC reserves the right to request additional information as required.

Should you have any further queries, please contact the official above and quote the case number.

Yours faithfully


.....
Dr. Ngwenzi Dlamuka
Chief Executive Officer, Heritage Western Cape

www.westerncape.gov.za/cas

Street Address: Protea Assurance Building, Green Market Square, Cape Town, 8001 • Postal Address: Private Bag 20067, Cape Town, 8001
• Tel: +27 (0)21 483 5959 • E-mail: hwc@westerncape.gov.za

Straatadres: Protea Assuransgebou, Groenmarkplein, Kaapstad, 8000 • Posadres: Privatebus 20067, Kaapstad, 8001
• Tel: +27 (0)21 483 5959 • E-pos: hwc@westerncape.gov.za



REFERENCE: 16/3/3/1/D6/28/0016/19
ENQUIRIES: Steve Kleinhans
DATE OF ISSUE: 2019 -09- 10

The Managing Director
AFRO FISHING (PTY) LTD
PO Box 2752
Mossel Bay
6500

Attention: Mr. D. van Zyl

Tel: (044) 690 5520
E-mail: deon@afrofishing.co.za

Dear Sir

WITHDRAWAL OF APPLICATION IN TERMS OF THE ENVIRONMENTAL IMPACT ASSESSMENT REGULATIONS, 2014 (AS AMENDED) FOR THE PROPOSED AFRO FISHING FISHMEAL AND OIL REDUCTION FACILITY ON A PORTION OF ERF 12459 (QUAY 1), PORT OF MOSSEL BAY, MOSSEL BAY

1. The application for Environmental Authorisation, as received by this Department on 2 August 2019, and the correspondence from your appointed Environmental Assessment Practitioner ("EAP") dated 10 September 2019, received by this Department via e-mail on 10 September 2019, refer.
2. This letter serves to inform you that the request for the withdrawal of the abovementioned application, as submitted to this Department by your appointed EAP, is herewith accepted.
3. Should you in future wish to undertake an activity that constitutes any of the listed activities as defined in Government Notice No. R. 983, R. 984 and/or R. 985 of the National Environmental Management Act, 1998 (Act No. 107 of 1998) ("NEMA") Environmental Impact Assessment Regulations of 4 December 2014, an application for authorisation must be submitted to this Department and authorisation obtained before such activity(ies) may commence.
4. This Department reserves the right to revise or withdraw any comments or request further information from you based on any information received.
5. This Department reserves the right to revise or withdraw initial comments or request further information from you based on any information received.

Yours faithfully

HEAD OF COMPONENT

ENVIRONMENTAL IMPACT MANAGEMENT SERVICES: REGION 3

DEPARTMENT OF ENVIRONMENTAL AFFAIRS AND DEVELOPMENT PLANNING

Ref.: 16/3/3/1/D6/28/0016/19

Copied to: Ms. Melissa Mackay

(EAP)

E-mail: mel@cape-eaprac.co.za



10 September 2019

Our Ref: MOS569/09

DEA&DP Ref: 16/3/3/1/D6/280016/19

Attention: Mr Steve Kleinhans
Department of Environmental Affairs & Development Planning
George

VIA: Email (Steve.Kleinhans@westerncape.gov.za)

RE: WITHDRAWAL OF APPLICATION FOR AFRO FISHING FISHMEAL & OIL REDUCTION FACILITY ON ERF 1249 (QUAY 2)

Our meeting on 29 August 2019 and subsequent discussions between the applicant, air quality specialist (Mr Chris Albertyn) and the air quality sampling contractor for Durr Systems in Europe have reference.

It has been confirmed that the earliest available date that Durr can undertake the Trimethylamine (TMA) sampling in the manner require by Mr Albertyn, from the plant in Peniche, Portugal is between 7 and 9 October 2019, with an analysis report approximately 15 days later.

Since this analysis is critical for Mr Albertyn and his Air Quality Impact Assessment for the proposal, this delay will negatively impact on the timeframes for the current application. As such, we hereby withdraw the current application and will resubmit as soon as we have the TMA analysis and Mr Albertyn's report.

Please note that the Garden Route District Municipality (GRDM) has in the meantime commenced with their ambient air quality screening at the Port of Mossel Bay. We are hoping to be able to include that data in the Draft BAR as part of the new application.

Please feel free to contact this office directly should you have any further queries.

Kind regards,



Ms Melissa Mackay
Snr Consultant

Cc:

Dr Johann Schoeman	GRDM	jschoeman@gardenroute.gov.za
Mr Angus Andries	GRDM	Angus@gardenroute.gov.za
Mr Deon van Zyl	Afro Fishing (Pty) Ltd	deon@afrofishing.co.za



REFERENCE: 16/3/31/D6/28/0016/19
ENQUIRIES: Steve Kleinhans
DATE OF ISSUE: 2019 -08- 13

The Managing Director
AFRO FISHING (PTY) LTD
PO Box 2752
Mossel Bay
6500

Attention: Mr. Deon van Zyl

Tel: (044) 690 5520
E-mail: deon@afrofishing.co.za

Dear Sir

ACKNOWLEDGEMENT OF RECEIPT OF THE APPLICATION FORM FOR BASIC ASSESSMENT IN TERMS OF THE ENVIRONMENTAL IMPACT ASSESSMENT REGULATIONS, 2014 (AS AMENDED) FOR THE PROPOSED AFRO FISHING FISHMEAL AND OIL REDUCTION FACILITY ON A PORTION OF ERF 12459 (QUAY 1), PORT OF MOSSEL BAY, MOSSEL BAY

1. The Application Form dated 2 August 2019, as received by this Department on 2 August 2019, refers.
2. This letter serves as an acknowledgment of receipt of the aforementioned document by this Department.
3. Kindly quote the above-mentioned reference number in any future correspondence in respect of the application.
4. The following requirements must be complied with in respect to all applications for Environmental Authorisation in terms of the National Environmental Management Act, 1998 (Act No. 107 of 1998) ("NEMA") and the EIA Regulations, 2014:

4.1. Alternatives

In terms of the NEMA and EIA Regulations, the investigation of alternatives is mandatory. This includes the option of not proceeding with the proposed activity (the "no-go" option). All alternatives identified must be determined to be feasible and reasonable. In this regard it must be noted that the Department may grant authorisation for an alternative as if it had been applied for, or may grant authorisation in respect of the whole or part of the proposed project in the application. Alternatives are not limited to activity alternatives, but include layout alternatives, design, operational and technology alternatives.

If, after identified alternatives have been investigated, no feasible and reasonable alternatives were found, no comparative assessment of alternatives, beyond the comparative assessment of the preferred alternative and the option of not proceeding, is required during the assessment. What would, however, be required in this instance is proof of the investigations undertaken, and motivation for there being no reasonable or feasible alternatives other than the preferred option and the no-go option. Refer to the Department's Guideline on Alternatives available on the Department's website or on request.

4.2. *Public Participation*

The BAR must be subject to a Public Participation Process that must comply with Chapter 6 of the EIA Regulations, 2014.

- ❖ In this regard it is important to highlight that the application and reports must adhere to the specific requirements regarding the public participation process set out in Regulations 40 and 41.

It is stated in the Application Form that certain public participation was undertaken prior to the submission of the application; however, please be informed that this public participation does not appear to adhere to the requirements of Regulation 41 as specifically required.

With due consideration of these requirements, it may be found that the public participation process conducted in terms of a BID does not comply with said requirements. In such an instance, the person conducting the public participation process will need to comply with Regulation 41. If this peremptory requirement is not met it may prejudice the success of the application.

- ❖ In addition to the above, the Environmental Assessment Practitioner ("EAP") must submit a minimum of two (2) printed copies and an electronic copy (saved on CD/DVD) of the draft BAR to the Department for a **30-day** comment period.

The draft BAR must also be made available to all relevant State Departments/Organs of State that administer laws relating to a matter affecting the environment, for a **30 - day** comment period.

The EAP must notify the Department in writing of the date the draft BAR was submitted to the relevant State Departments/Organs of State and clearly indicate whether or not such State Departments/Organs of State were notified of the 30-day comment period in terms of Section 24O of NEMA.

It is imperative that State Departments/Organs of State are in possession of the draft Reports when the EAP issues them with the notice in terms of Section 24O of NEMA. **Please note that the EAP is responsible for such consultation.** Therefore, it is requested that the EAP include proof of such notification to the relevant State Departments/Organs of State in terms of Section 24O(2) and (3) of NEMA in the BAR, where appropriate.

Please be reminded of the requirements regarding the EAP's responsibility to notify and consult with every organ of state that administers a law relating to a matter affecting the environment relevant to that application for an environmental authorization.

It is noted that the *Mossel Bay Municipality* is not included in the list of State Department / Organs of State that were or will be consulted.

- ❖ In terms of good practice, you are encouraged to engage with State Departments and other Organs of State early in the EIA process to solicit their inputs on any of their requirements to be addressed in the EIA process. Please note that this does not replace the requirement of making the draft BAR available to State Departments/Organs of State as stipulated above.
- ❖ A register of I&APs must be opened and maintained. The register must also be submitted to the Department.
- ❖ The EAP must record and respond to all comments received. The comments and responses must be captured in a Comments and Responses Report and must also include a description of the public participation process followed. This report must also be included in the public participation information attached to the BAR to be submitted for decision.

4.3. *Environmental Management Programme ("EMPr")*

In accordance with Section 24N of NEMA and Regulation 19 of Government Notice ("GN") No. R. 982 of 4 December 2014, the Department hereby requires the submission of an Environmental Management Programme ("EMPr"). The contents of such an EMPr must meet the requirements outlined in Section 24N (2) and (3) of the NEMA (as amended) and Appendix 4 of GN No. R. 982 of 4 December 2014. The EMPr must address the potential environmental impacts of the activity throughout the project life cycle, including an assessment of the effectiveness of monitoring and management arrangements after implementation (auditing). It must be submitted together with the BAR. When compiling the EMPr, the Department's Guideline for Environmental Management Plans (June 2005), available on the Department's website (or on request) must be taken into account.

4.4. *Guidelines*

When undertaking the EIA process, you must take into account applicable guidelines, including the guidelines developed by this Department. These can be downloaded from the Department's website or can be made available on request. In particular, the guidelines that may be applicable to the proposed development include, *inter alia*, the following:

- Circular EADP 0028/2014: One Environmental Management System.
- Guideline on Need and Desirability (March 2013)
- Guideline on Generic Terms of Reference for EAPs and Project Schedules (March 2013)
- Guideline for determining the scope of specialist involvement in EIA processes, June 2005.

- Guideline for the review of specialist input in the EIA process, June 2005.
- Guideline for environmental management plans, June 2005.
- Guideline for involving visual and aesthetic specialists in the EIA process, June 2005.
- Guideline for involving heritage specialists in the EIA process, June 2005.
- Guideline for involving social assessment specialists in the EIA process, February 2007.
- Guideline for involving economists in the EIA process, June 2005.

4.5. *Need & Desirability*

In terms of the NEMA EIA Regulations, when considering an application, the Department must take into account a number of specific considerations including *inter alia*, the need for and desirability of any proposed development. As such, the need for and desirability of the proposed activity must be considered and reported on in the BAR. The BAR must reflect how the strategic context of the site in relation to the broader surrounding area, has been considered in addressing need and desirability. Refer to the Department's Guideline on Need and Desirability (March 2013).

4.6. *NEMA Principles*

In addition to the above, you must clearly show how the proposed development complies with the principles contained in Section 2 of the NEMA and must also show how the proposed development meets the requirements of sustainable development.

4.7. *BAR Requirements*

The BAR must contain all the information outlined in Appendix 1 of GN No. R. 982 of 4 December 2014 and must also include the information requested in this letter. Failure to submit any information prescribed in Appendix 1 of GN No. R. 982 may result in Environmental Authorisation being refused.

The Department awaits the submission of the BAR as prescribed by Regulation 19 of the EIA Regulations, GN No. R. 982 of 4 December 2014. In accordance with Regulation 19 of GN No. R. 982 of 4 December 2014, the Department hereby stipulates that the BAR must be submitted to this Department for decision within **90 days** from the date of receipt of the application by the Department, calculated from 2 August 2019. If however, significant changes have been made or significant new information has been added to the BAR, the applicant/EAP must notify the Department that an additional 50 days (i.e. 140 days from receipt of the application) would be required for the submission of the BAR. The additional 50 days must include a minimum 30-day commenting period to allow registered I&APs to comment on the revised report/additional information.

If the BAR is not submitted within the prescribed timeframe, the application will lapse in terms of Regulation 45 of Government Notice Regulation No. 982 of 4 December 2014 and your file will be closed. Should you wish to pursue the application again, a new application process would have to be initiated. A new Application Form would have to be submitted and the prescribed application fee would have to be paid again.

Please note that two (2) printed copies as well as two (2) electronic copies (saved on CD/DVD) of the BAR must be submitted to the Department.

5. General

Please note that the activity may not commence prior to an Environmental Authorisation being granted by the Department. It is an offence in terms of Section 49A of the NEMA for a person to commence with a listed activity unless the Department has granted an Environmental Authorisation for the undertaking of the activity. Failure to comply with the requirements of Section 24F and 49A of the NEMA will result in the matter being referred to the Environmental Compliance and Enforcement Directorate of this Department for prosecution. A person convicted of an offence in terms of the above is liable to a fine not exceeding R10 million or to imprisonment for a period not exceeding 10 years, or to both such fine and imprisonment.

6. This Department reserves the right to revise or withdraw initial comments or request further information from you based on any information received.

Yours faithfully



HEAD OF COMPONENT

ENVIRONMENTAL IMPACT MANAGEMENT SERVICES: REGION 3

DEPARTMENT OF ENVIRONMENTAL AFFAIRS AND DEVELOPMENT PLANNING

Ref.: 16/3/3/1/D6/28/0016/19

Copied to:

EAP: Ms. Melissa Mackay (Cape EAPrac.)

Garden Route District Municipality: Air Quality Control

Mossel Bay Municipality: Planning & Integrated Services

E-mail: mel@cape-eaprac.co.za

E-mail: jschoeman@edendm.co.za

E-mail: cventer@mosselbay.gov.za



REFERENCE: 16/3/3/6/7/1/D6/28/0122/19
SPECIFIC FEE NUMBER: G-BA-EIA-F12
ENQUIRIES: Steve Kleinhans
DATE OF ISSUE: 2019 -06- 18

The Managing Director
AFRO FISHING (PTY) LTD
PO Box 2752
Mossel Bay
6500

Attention: Mr. D. van Zyl

Tel: (044) 690 5520
E-mail: deon@afrofishing.co.za

Dear Madam

ACKNOWLEDGEMENT OF RECEIPT OF THE NOTICE OF INTENT TO SUBMIT AN APPLICATION FOR ENVIRONMENTAL AUTHORISATION IN TERMS OF THE ENVIRONMENTAL IMPACT ASSESSMENT REGULATIONS, 2014 (AS AMENDED) FOR THE PROPOSED AFRO FISHING FISHMEAL AND OIL REDUCTION FACILITY ON A PORTION OF ERF 12459 (QUAY 1), PORT OF MOSSEL BAY, MOSSEL BAY

1. The abovementioned document dated 7 June 2019 and received by this Department on 7 June 2019, refers.
2. This letter serves as an acknowledgment of receipt of the abovementioned document.
3. From the information provided in the document it is understood that the Afro Fishing (Pty) Ltd ("the proponent") is proposing the following:

The expansion of the current Afro Fishing facility to include fishmeal and oil reduction processes on the current footprint of the old I&J facility, with a new canning store adjacent to the Afro Fishing store. The proposal entails the harvesting of industrial fish, e.g. anchovy, red-eye, etc. from local waters for the sole purpose of producing fishmeal and fish oil. It is understood that the plant will have a capacity to process a maximum of 40 tons per hour of raw fish or approximately 960 tons per day. The proposed project will produce fishmeal and fish oil products for export markets.

4. A Basic Assessment process must be followed in order to apply for Environmental Authorisation. Only those activities applied for shall be considered for authorisation. The onus is on the

applicant to ensure that all the applicable listed activities are applied for and assessed as part of the Basic Assessment process.

5. It is noted that the Environmental Assessment Practitioner ("EAP") requests a pre-application consultation meeting. This Directorate will avail itself for the meeting at a convenient time. The Environmental Impact Practitioner ("EAP") is advised to arrange the meeting.

No information provided, views expressed and /or comments made by officials during the pre-application consultation should in any way be seen as an indication or confirmation:

- that additional information or documents will not be requested
- of the outcome of the application

6. The Department will provide comments on the proposal subsequent to this meeting.
7. The Department notes your "Request for a specific fee reference number". The following specific fee reference number **G-BA-EIA-F12** must be inserted into the Application Form and proof of payment of the application fee attached when the Application Form is submitted to the Department
8. It is noted that a Public Participation Process ("PPP") for the proposal has already been undertaken. It must be ensured that the PPP meets the requirements of Regulation 41 of the Environmental Impact Assessment Regulations, 2014 (as amended).
9. Furthermore, it is noted that the proponent is not the owner of the property on which the proposal is being earmarked. In this regard please ensure that the landowner's consent is included in the application for environmental authorisation.
10. Please note that the proposed development may not commence prior to an environmental authorisation being granted by the Department.
11. This Department reserves the right to revise or withdraw initial comments or request further information from you based on any information received.

Yours faithfully



HEAD OF COMPONENT

ENVIRONMENTAL IMPACT MANAGEMENT SERVICES: REGION 3

DEPARTMENT OF ENVIRONMENTAL AFFAIRS AND DEVELOPMENT PLANNING

cc: Ms. Melissa Mackay

(EAP)

E-Mail: mel@cape-eaprac.co.za