

CBA, ESA & ONA Map



Legend

- Farm Portions
- Other Natural Area
- BSP ESA: Restore**
- ESA2: Restore from other land use
- BSP ESA**
- ESA: Aquatic
- ESA: Terrestrial
- BSP CBA**
- CBA: Terrestrial
- CBA: Wetland
- Rivers**
- Non-Perennial
- Wetlands (NWM5)**
- Classification
- Channelled valley-bottom wetland
- Seep wetland
- Wetlands (NFEPA)**
- Natural

Map Center: Lon: 22°4'47.8"E
Lat: 34°9'6.8"S

Scale: 1:5,936

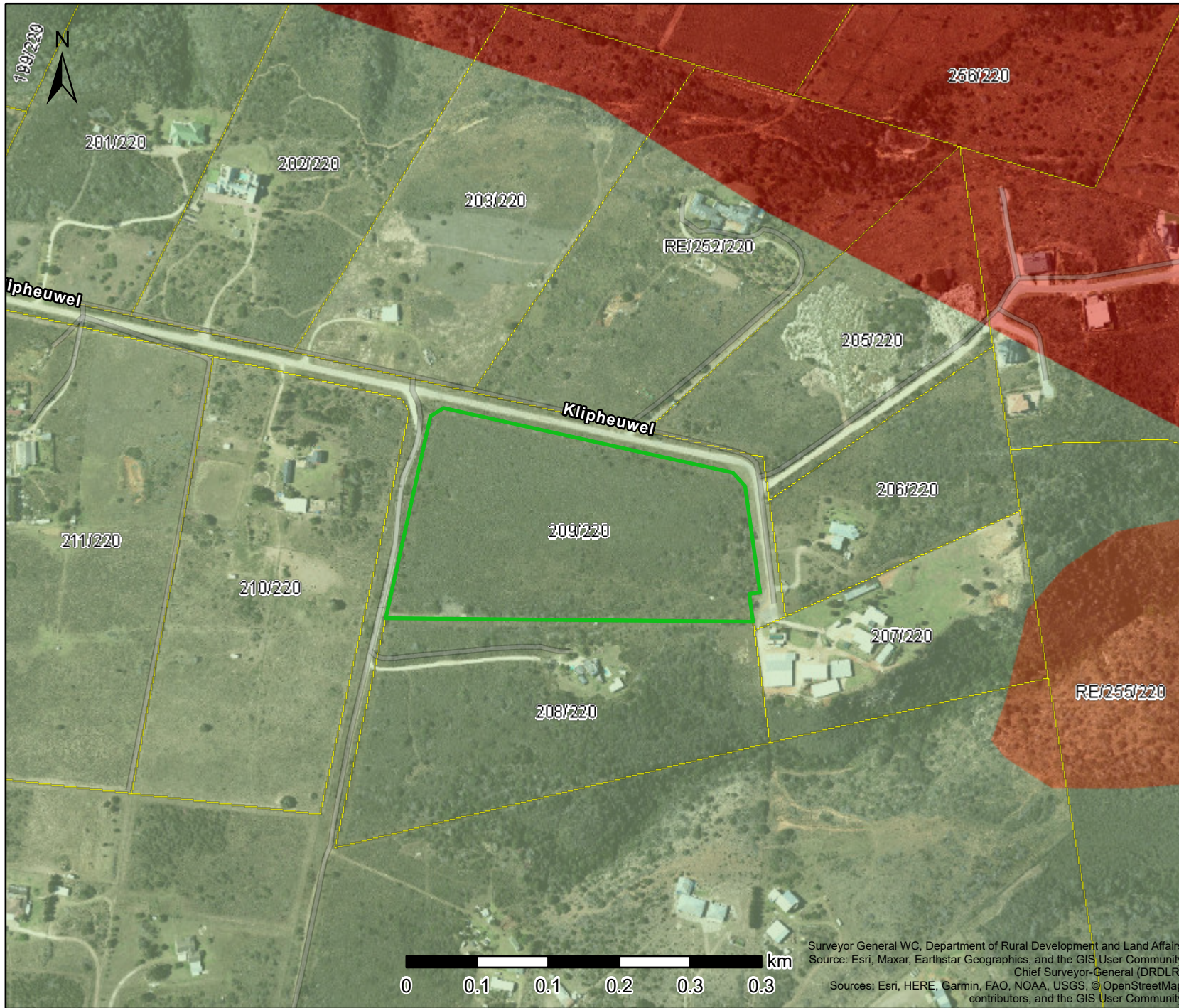
Date created: 2023/14/11



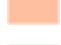
**Western Cape
Government**
FOR YOU

Surveyor General WC, Department of Rural Development and Land Affairs
Chief Directorate: National Geo-spatial Information (DALRRD)
Source: Esri, Maxar, Earthstar Geographics, and the GIS User Community
Chief Surveyor-General (DRDLR)
CapeNature

SANBI RED LIST: ORIGINAL MAP



Legend

-  Farm Portions
- Red List of Ecosystems Original Category**
-  Critically Endangered
-  Endangered
-  Least Concern

Map Center: Lon: 22°4'47.8"E
Lat: 34°9'6.8"S

Scale: 1:5,936

Date created: 2023/14/11



**Western Cape
Government**
FOR YOU

Surveyor General WC, Department of Rural Development and Land Affairs
Source: Esri, Maxar, Earthstar Geographics, and the GIS User Community
Chief Surveyor-General (DRDLR)
Sources: Esri, HERE, Garmin, FAO, NOAA, USGS, © OpenStreetMap contributors, and the GIS User Community

SANBI RED LIST: REMNANTS MAP



Legend

- Farm Portions
- Red List of Ecosystems Remnants Category**
- Critically Endangered
- Endangered
- Least Concern

Map Center: Lon: 22°4'47.8"E
Lat: 34°9'6.8"S

Scale: 1:5,936

Date created: 2023/14/11



**Western Cape
Government**
FOR YOU

Surveyor General WC, Department of Rural Development and Land Affairs
Source: Esri, Maxar, Earthstar Geographics, and the GIS User Community
Chief Surveyor-General (DRDLR)
Sources: Esri, HERE, Garmin, FAO, NOAA, USGS, © OpenStreetMap contributors, and the GIS User Community

Wetland & River Map



Legend

- Farm Portions
- Rivers**
- Non-Perennial
- Wetlands (NWM5)**
- Classification**
- Channelled valley-bottom wetland
- Seep wetland
- Wetlands (NFEPA)**
- Natural

Map Center: Lon: 22°4'47.8"E
Lat: 34°9'6.8"S

Scale: 1:5,936

Date created: 2023/14/11



Surveyor General WC, Department of Rural Development and Land Affairs
Chief Directorate, National Geo-spatial Information (DALRRD)
Source: Esri, Maxar, Earthstar Geographics, and the GIS User Community
Chief Surveyor-General (DRDLR)
Sources: Esri, HERE, Garmin, FAO, NOAA, USGS, © OpenStreetMap