

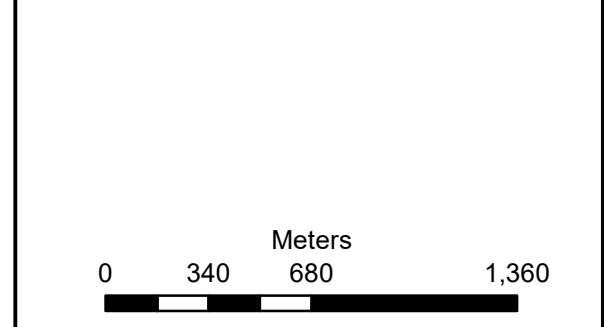
**Portion 31 of Farm Buffelsfontein 250,
Mossel Bay Municipal District**

Legend

Portion 31 of Farm 250 Buffelsfontein

Notes

- Map Scale is 1: 5 350 when printed on A3
- Imagery date August 2022



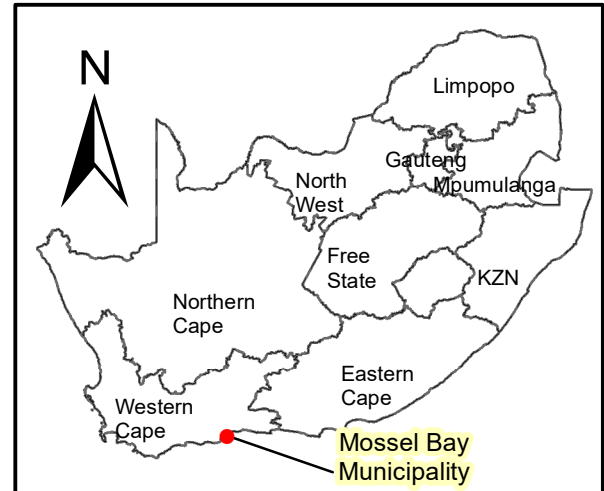
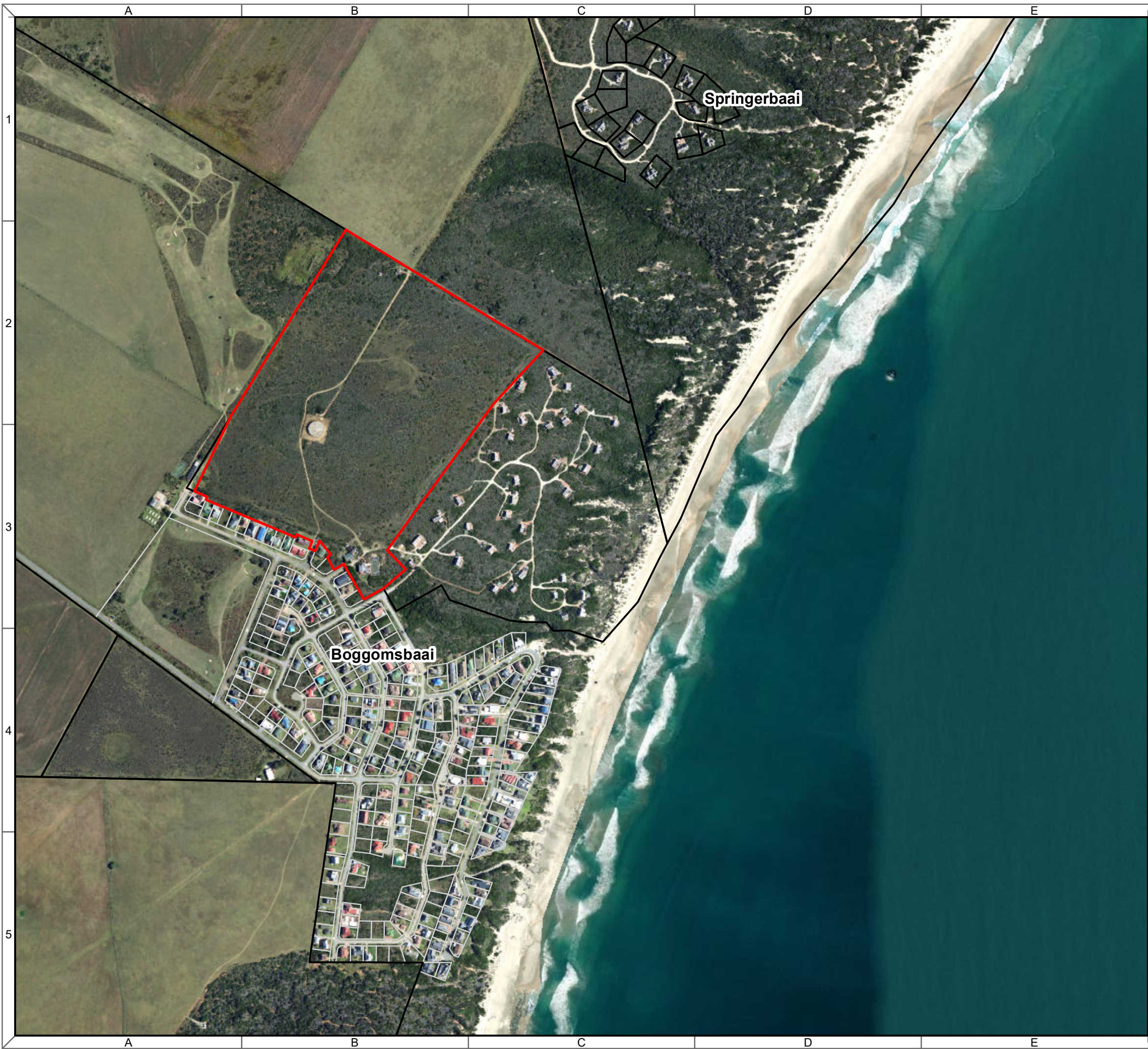
Map Drawn By:	Date	Reference
Paul Buchholz	12/2/2022	MOS735

Cape Environmental Assessment Practitioners (Pty) Ltd
Reg. No. 2008/004627/07

Telephone: +27 44 874 0365
 Facsimile: +27 44 874 0432
 Web: www.cape-eaprac.co.za

17 Progress St
 PO Box 2070
 George 6530

1:50 000 TOPOGRAPHICAL MAP

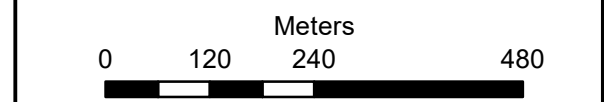


**Portion 31 of Farm Buffelsfontein 250,
Mossel Bay Municipal District**

- Legend**
- Portion 31 of Farm 250 Buffelsfontein
 - Farm boundaries
 - Erf boundaries

Notes

- Map Scale is 1: 5 350 when printed on A3
- Imagery date August 2022

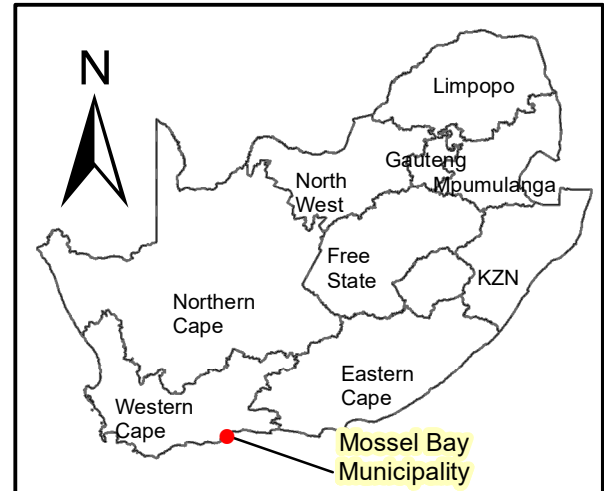
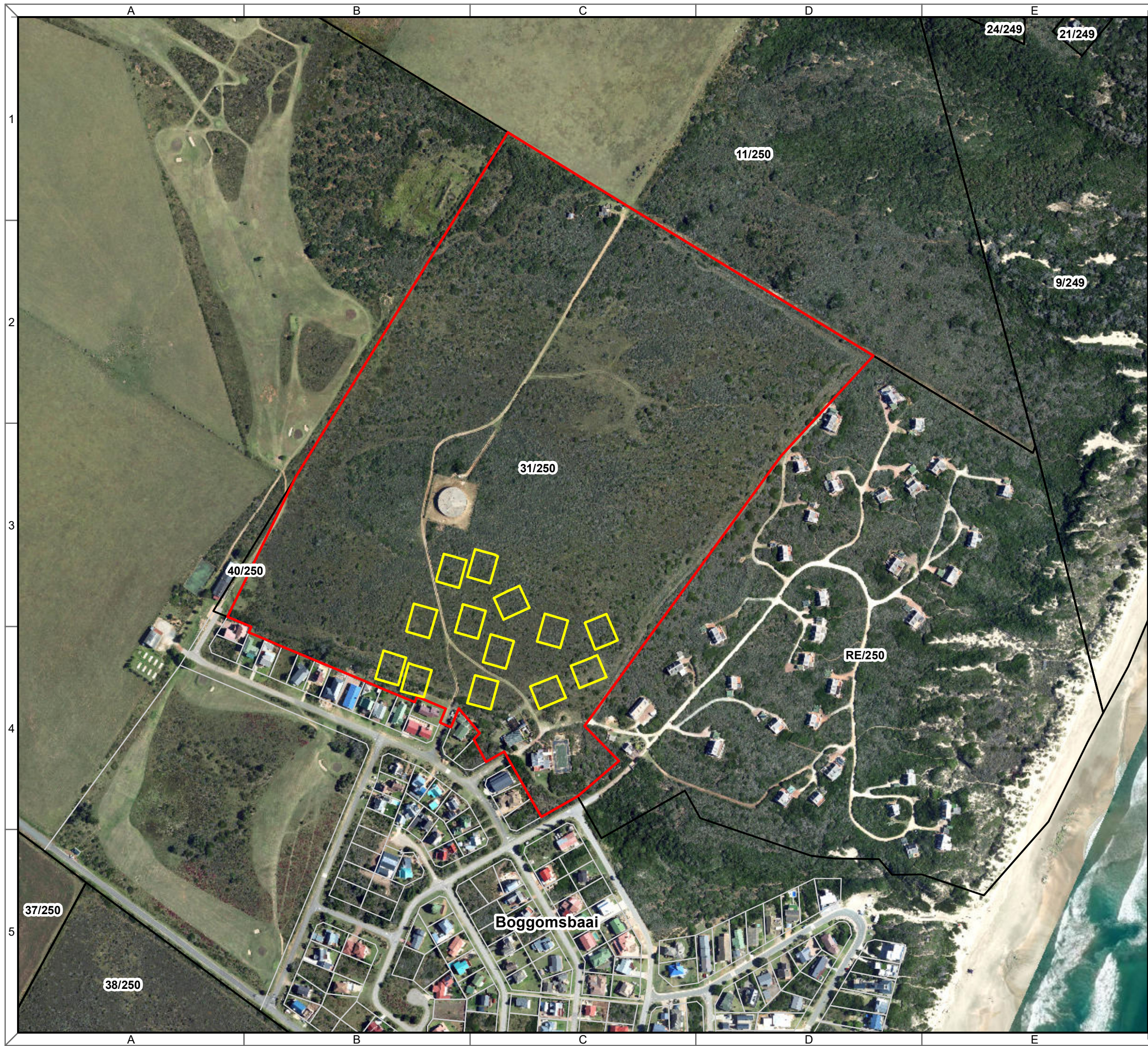


Map Drawn By:	Date	Reference
Paul Buchholz	12/2/2022	MOS735

Cape Environmental Assessment Practitioners (Pty) Ltd
Reg. No. 2008/004627/07

Telephone: +27 44 874 0365
 Facsimile: +27 44 874 0432
 Web: www.cape-eaprac.co.za

17 Progress St
 PO Box 2070
 George 6530

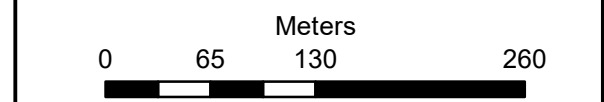


**Portion 31 of Farm Buffelsfontein 250,
Mossel Bay Municipal District**

- Legend**
- Proposed single residential homes
 - Portion 31 of Farm 250 Buffelsfontein
 - Farm boundaries
 - Erf boundaries

Notes

- Map Scale is 1: 5 350 when printed on A3
- Imagery date August 2022



Map Drawn By:	Date	Reference
Paul Buchholz	12/2/2022	MOS735

Cape Environmental Assessment Practitioners (Pty) Ltd
 Telephone: +27 44 874 0365
 Facsimile: +27 44 874 0432
 Web: www.cape-eaprac.co.za
 17 Progress St
 PO Box 2070
 George 6530

1:50 000 TOPOGRAPHICAL MAP