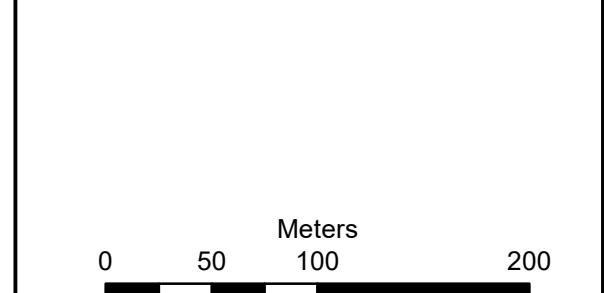


**Portion 31 of Farm Buffelsfontein 250,
Mossel Bay Municipal District**

- Legend**
- Right of Servitude
 - Proposed single residential homes
 - Portion 31 of Farm 250 Buffelsfontein
 - Proposed development area
 - Critical Biodiversity Area 1 (CBA1)
 - Critical Biodiversity Area 2 (CBA2)
 - Ecological Support Areas 1 (ESA1)
 - Ecological Support Areas 2 (ESA2)
 - Other Natural Areas (ONA)

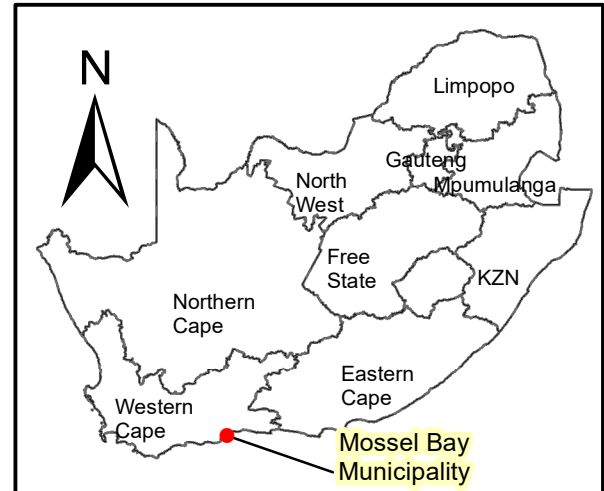
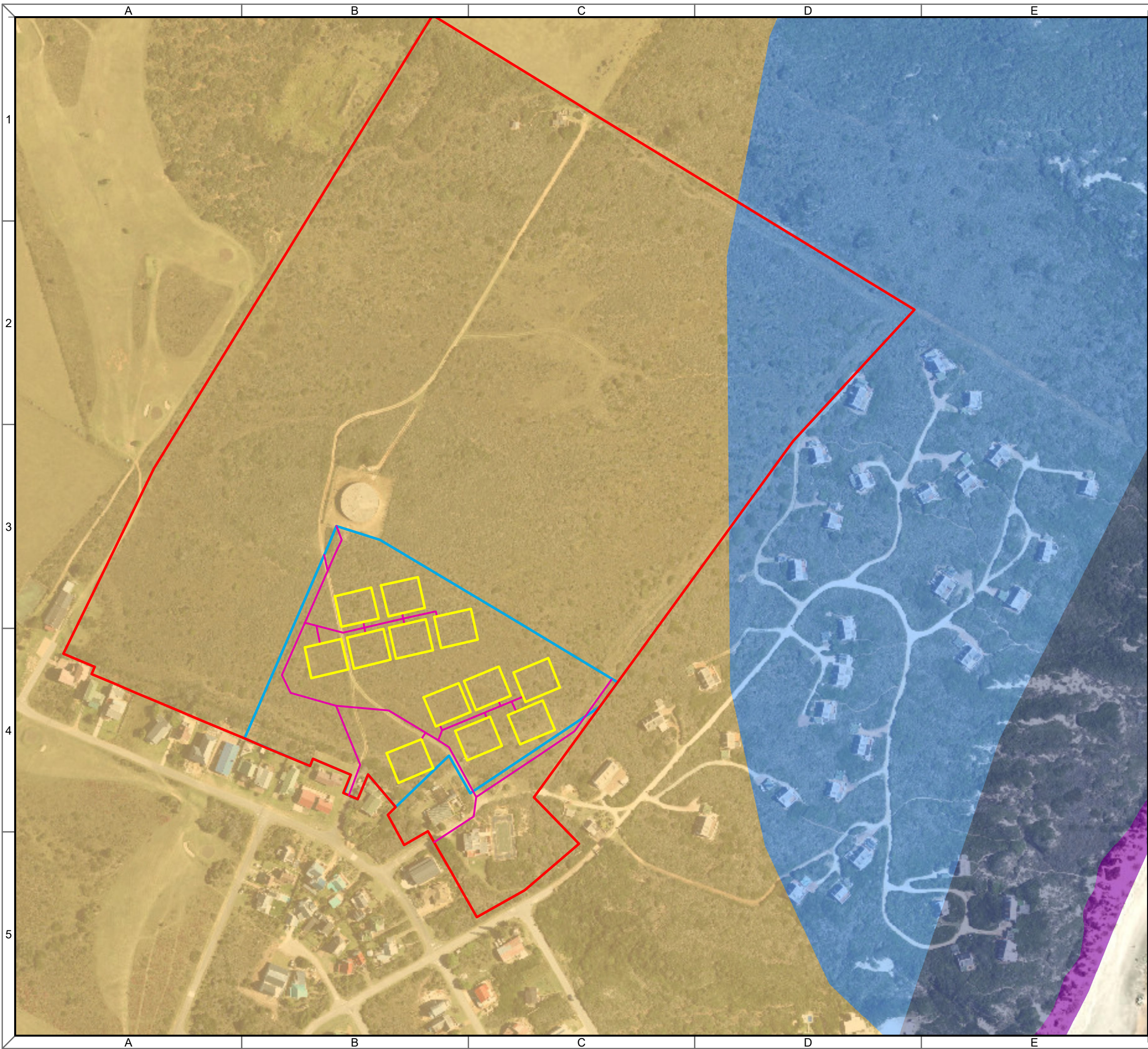
Notes

- Map Scale is 1:3 570 when printed on A3
- Imagery date August 2022



Map Drawn By:	Date	Reference
Paul Buchholz	02/05/2023	MOS735

 **Cape Environmental Assessment Practitioners (Pty) Ltd**
 Reg. No. 2008/004627/07
 Telephone: +27 44 874 0365
 Facsimile: +27 44 874 0432
 Web: www.cape-eaprac.co.za
 17 Progress St
 PO Box 2070
 George 6530



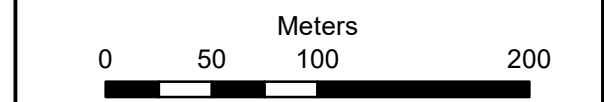
**Portion 31 of Farm Buffelsfontein 250,
Mossel Bay Municipal District**

- Legend**
- Right of Servitude
 - Proposed single residential homes
 - Portion 31 of Farm 250 Buffelsfontein
 - Proposed development area

- Vegetation map (2018)**
- Albertinia Sand Fynbos
 - Canca Limestone Fynbos
 - Cape Seashore Vegetation
 - Hartenbos Dune Thicket

Notes

- Map Scale is 1:3 570 when printed on A3
- Imagery date August 2022



Map Drawn By:	Date	Reference
Paul Buchholz	02/05/2023	MOS735





SANBI Red List: Remnants

Legend

Red List of Ecosystems Remnants

Category

 Endangered

 Least Concern

Map Center: Lon: 21°54'31.1"E
Lat: 34°15'37.5"S

Scale: 1:9 028

Date created: May 5, 2023



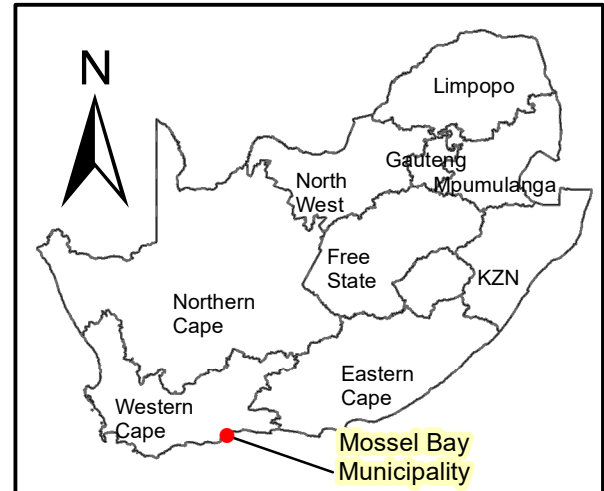
**Western Cape
Government**

FOR YOU

Agriculture

Mossel Bay Municipality, Maxar
Esri South Africa, Esri, HERE, Garmin
South African National Biodiversity Institute

0 0.07 0.15 0.3 km

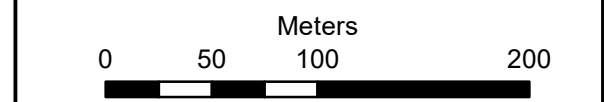


**Portion 31 of Farm Buffelsfontein 250,
Mossel Bay Municipal District**

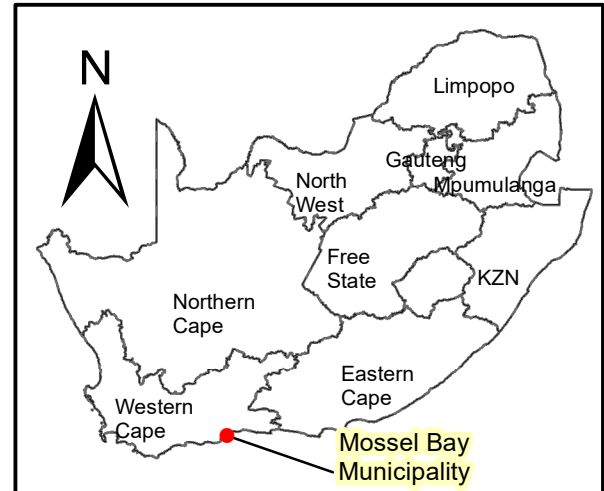
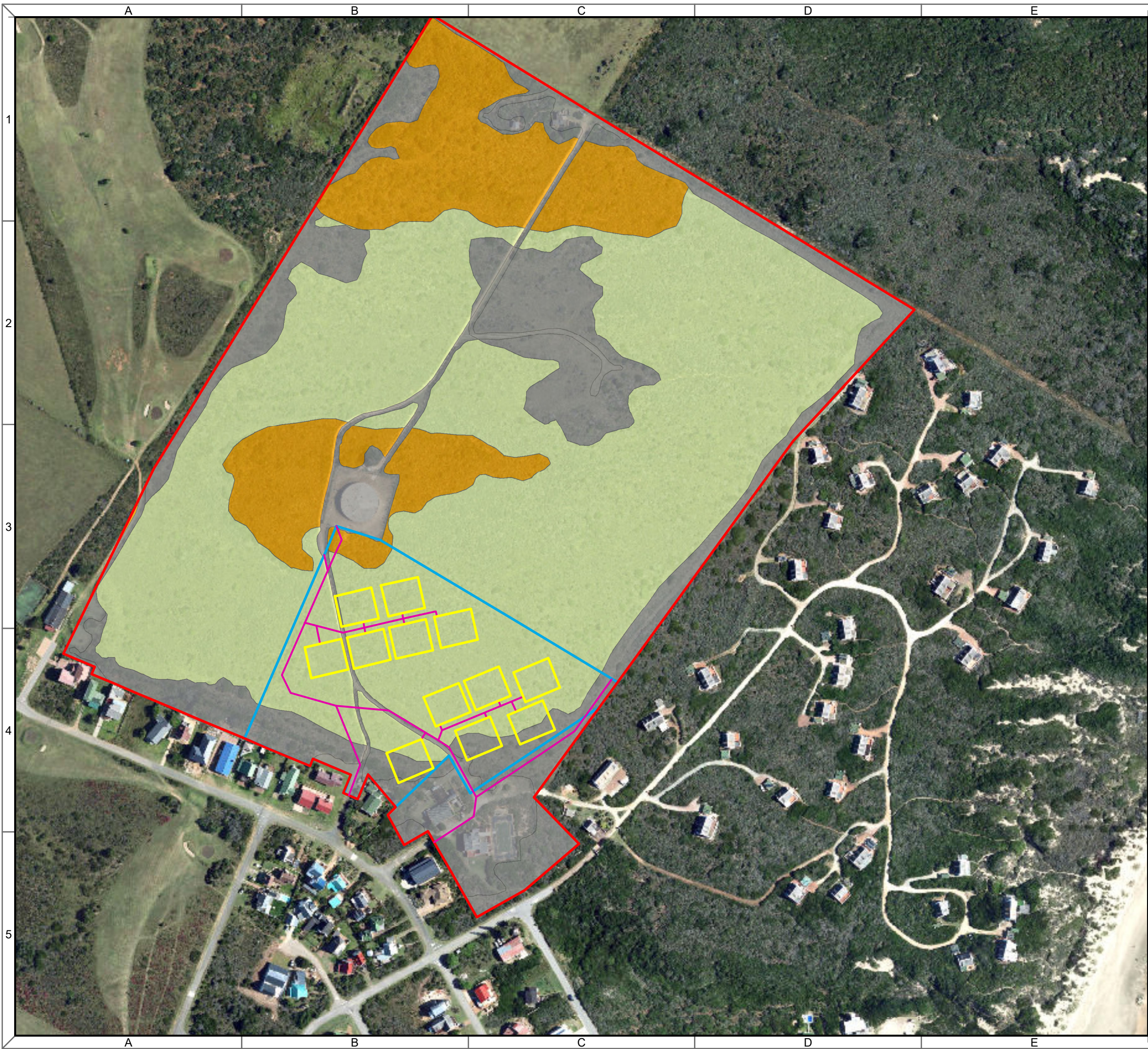
- Legend**
- Right of Servitude
 - Proposed single residential homes
 - Portion 31 of Farm 250 Buffelsfontein
 - Proposed development area
- Site habitats**
- Thicket
 - Secondary renosterveld
 - Degraded areas
 - Transformed

Notes

- Map Scale is 1:3 570 when printed on A3
- Imagery date August 2022



Map Drawn By:	Date	Reference
Paul Buchholz	03/05/2023	MOS735

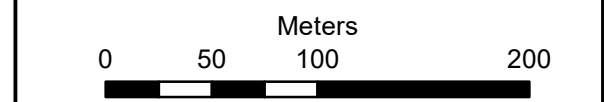


**Portion 31 of Farm Buffelsfontein 250,
Mossel Bay Municipal District**

- Legend**
- Right of Servitude
 - Proposed single residential homes
 - Portion 31 of Farm 250 Buffelsfontein
 - Proposed development area
- Site sensitivity**
- Medium
 - Low
 - Very low

Notes

- Map Scale is 1:3 570 when printed on A3
- Imagery date August 2022



Map Drawn By:	Date	Reference
Paul Buchholz	03/05/2023	MOS735



River & Wetland Map

Legend

Rivers

Non-Perennial

Wetlands (NWM5)

Classification

Channelled valley-bottom wetland

Depression wetland

Seep wetland

Wetlands (NFEPA)

Artificial

Natural

Map Center: Lon: 21°54'31.1"E
Lat: 34°15'35.6"S

Scale: 1:9 028

Date created: May 5, 2023

Boggomsbaai

Mossel Bay Municipality, Maxar
Esri South Africa, Esri, HERE, Garmin
Department of Rural Development and Land Reform, Chief Directorate: National
Geo-Spatial Information



**Western Cape
Government**

FOR YOU

Agriculture

0 0.07 0.15 0.3 km